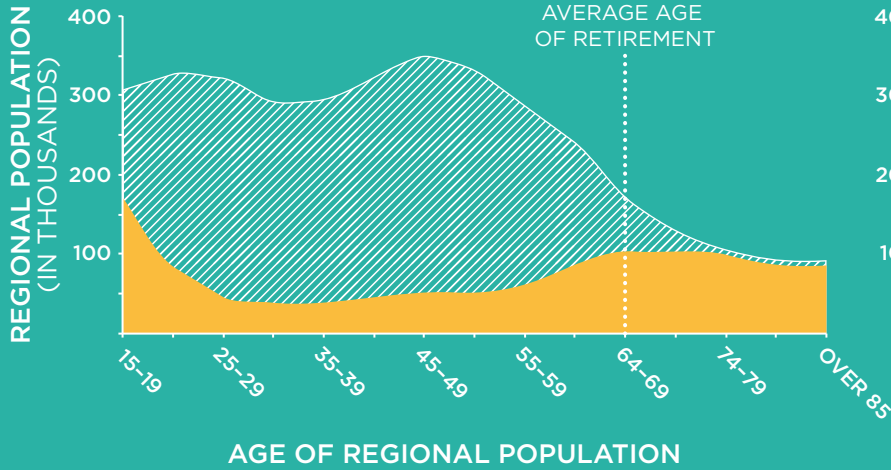


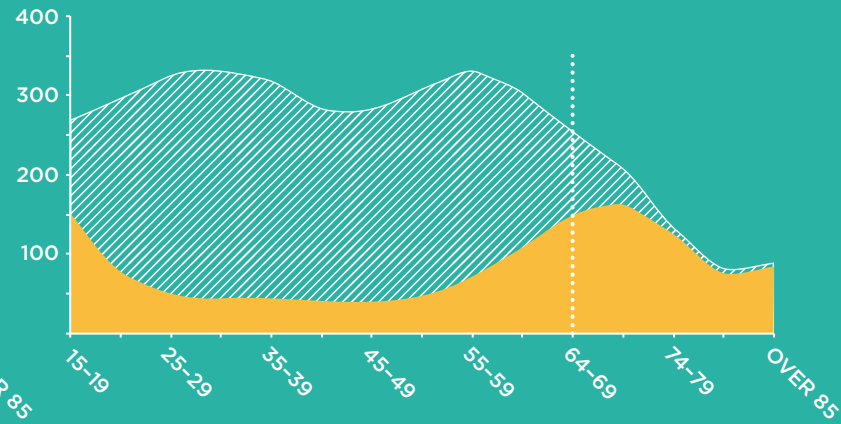
THE REGION'S AGING LABOR FORCE

 IN LABOR FORCE
 NOT IN LABOR FORCE

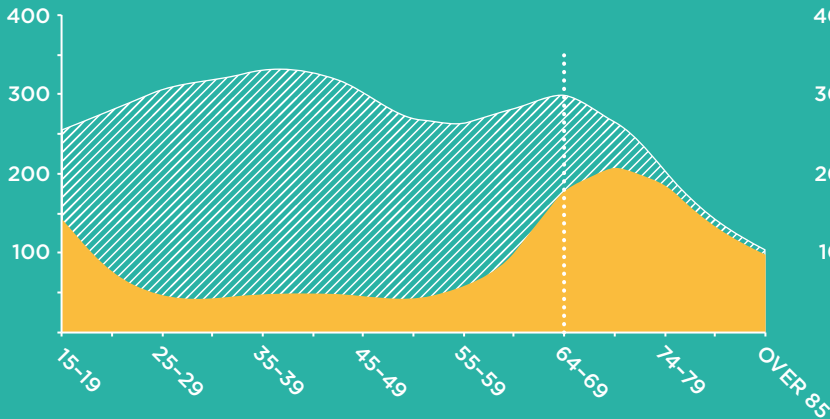
2010 BABY BOOMERS MADE UP 49% OF THE LABOR FORCE



2020 BABY BOOMERS WILL BEGIN TO ENTER RETIREMENT AGE



2030 NEARLY 1 MILLION WORKERS CURRENTLY OVER THE AGE OF 40 WILL HAVE LEFT THE LABOR FORCE



2040 WITH MORE OF THE LABOR FORCE IN RETIREMENT, GROWTH IN THE REGION WILL BE CONSTRAINED SIGNIFICANTLY

