

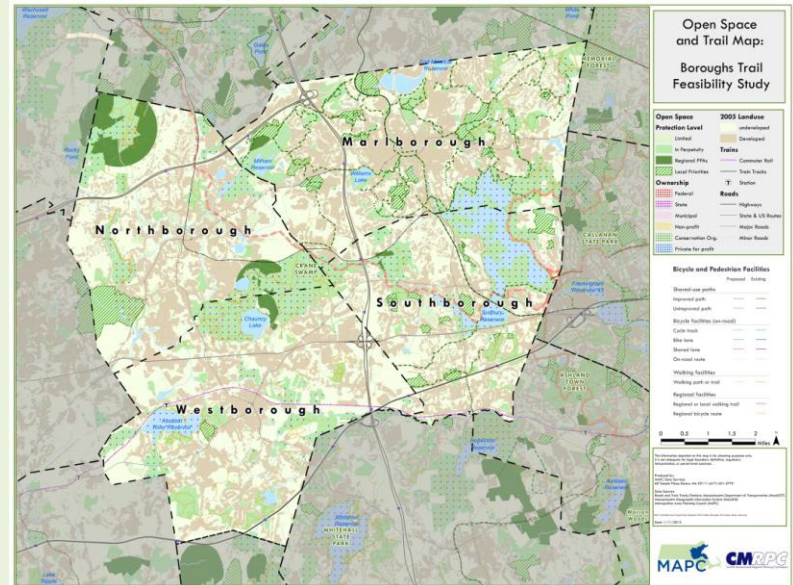
Boroughs Trail Feasibility Study

Feasibility analysis for the regional coordination and promotion of a potential trail corridor and network in Marlborough, Northborough, Southborough and Westborough

Project Fact Sheet

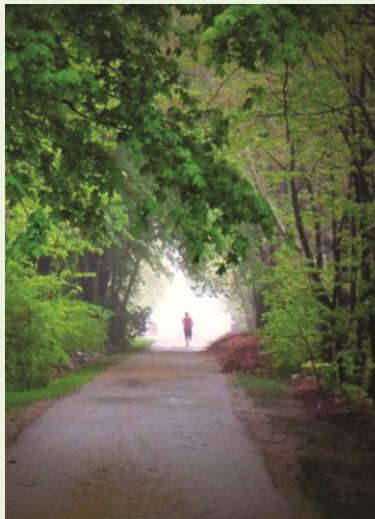
The Boroughs Trail Feasibility Study is exploring the feasibility of developing a coordinated approach to trails development, management and promotion in the city of Marlborough and the towns of Northborough, Southborough and Westborough.

The project will bring together local, state and private landowners together with business leaders and park, recreation and health advocates to discuss this approach.



Comprised of a chain of separately owned trails under public and private stewardship, the Boroughs Trail would be a regional recreational asset and economic development tool. The trail and the network of linkages would support a regional identity and provide an interconnected recreational hub having a long term impact on economic development, housing, public health, community engagement, equity and the quality of life in the Boroughs.

For more information, please visit:
<http://www.mapc.org/boroughstrail>



This study was funded through the District Local Technical Assistance (DLTA) program. DLTA funds are distributed among the state's 13 Regional Planning Agencies (RPAs) to provide cities and towns with technical assistance to help move municipalities forward in the Commonwealth's key initiatives, including regional collaboration, promoting economic development, best practices in zoning and protecting the environment.

For more information about this study, please contact Trish Settles (Central Massachusetts Regional Planning Commission) at tsettles@cmrpc.org / (508) 459-3320 or Barry Keppard (Metropolitan Area Planning Council) at bkeppard@mapc.org / (617) 451-2770 x2083.