

## Boroughs Trail Feasibility Study

# APPENDICES

## **Appendix A – Open Space and Trail Maps**

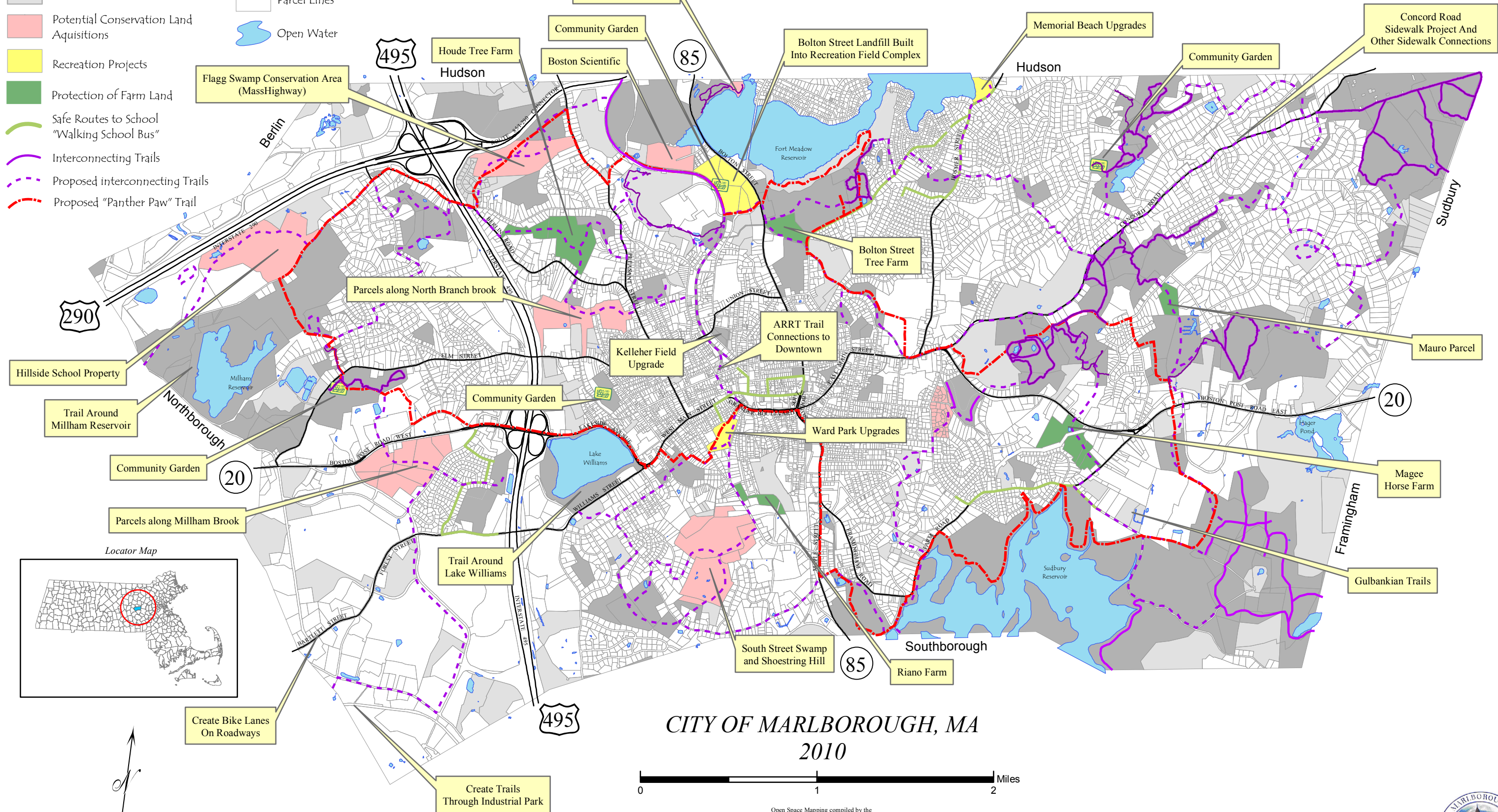
Map Explanation

- Protected Land
- Unprotected Land
- Potential Conservation Land Aquisitions
- Recreation Projects
- Protection of Farm Land
- Safe Routes to School "Walking School Bus"
- Interconnecting Trails
- Proposed interconnecting Trails
- Proposed "Panther Paw" Trail
- Possible Community Garden Locations
- Parcel Lines
- Open Water

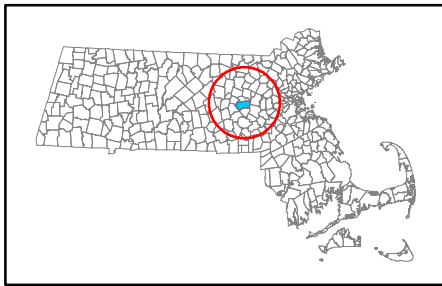
# OPEN SPACE PLAN

## Five-Year Action Plan

MAP 10



Locator Map



**CITY OF MARLBOROUGH, MA**  
2010



Open Space Mapping compiled by the Marlborough Department of Conservation and the Department of Public Works.

Nancy E. Stevens, Mayor  
Priscilla Ryder, Conservation Officer  
Nathaniel Bowen, GIS Administrator

Copyright © 2010 City of Marlborough, Ma.

ALL RIGHTS RESERVED WORLDWIDE. No part of this publication may be reproduced, adapted, translated, stored in a retrieval system or transmitted in any form or by any means, electronic, mechanical, photocopying, recording, or otherwise, without the prior written permission of the publisher.

Map current as of January 30, 2010

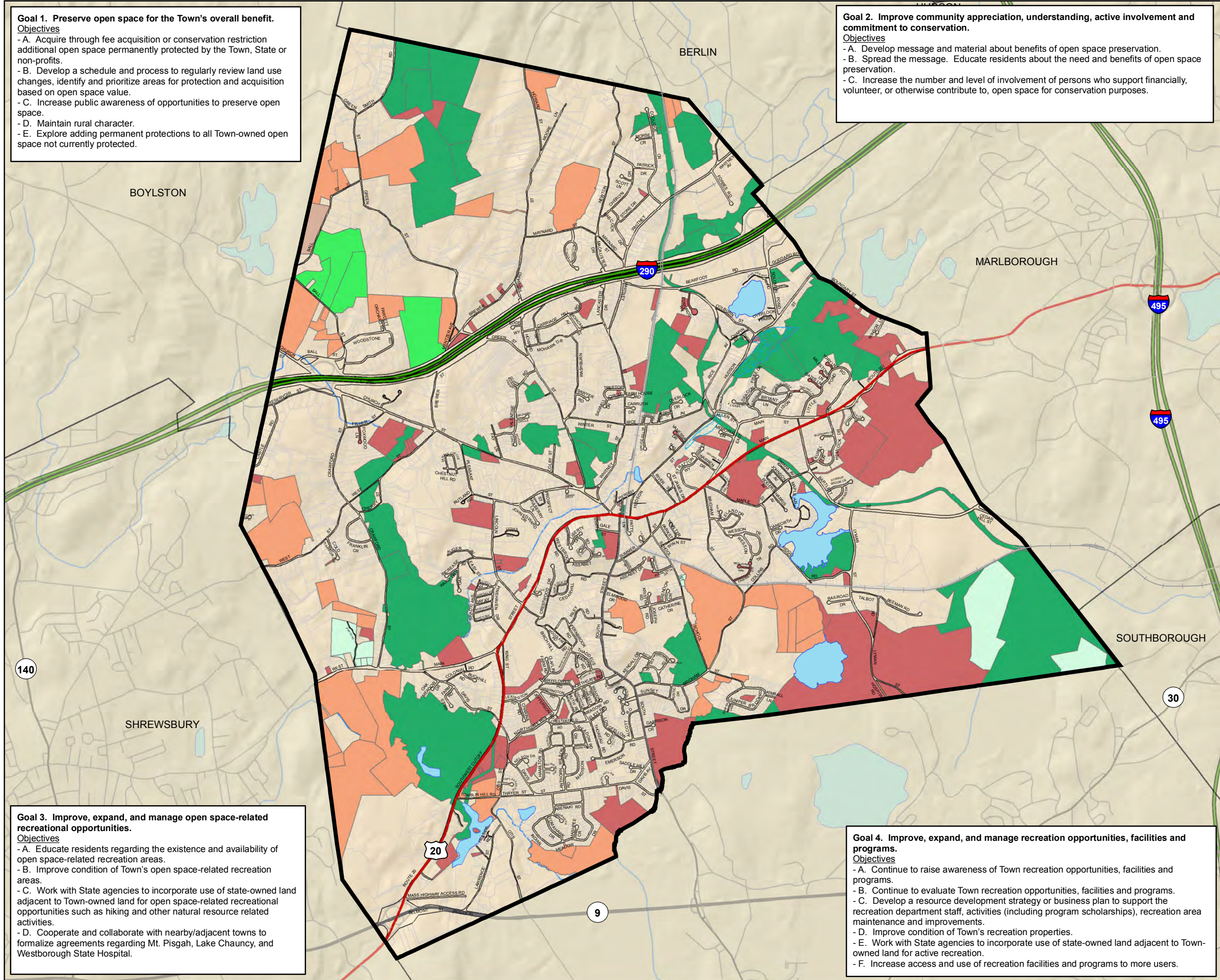


**Goal 1. Preserve open space for the Town's overall benefit.**  
**Objectives**  
 - A. Acquire through fee acquisition or conservation restriction additional open space permanently protected by the Town, State or non-profits.  
 - B. Develop a schedule and process to regularly review land use changes, identify and prioritize areas for protection and acquisition based on open space value.  
 - C. Increase public awareness of opportunities to preserve open space.  
 - D. Maintain rural character.  
 - E. Explore adding permanent protections to all Town-owned open space not currently protected.

**Goal 2. Improve community appreciation, understanding, active involvement and commitment to conservation.**  
**Objectives**  
 - A. Develop message and material about benefits of open space preservation.  
 - B. Spread the message. Educate residents about the need and benefits of open space preservation.  
 - C. Increase the number and level of involvement of persons who support financially, volunteer, or otherwise contribute to, open space for conservation purposes.

**Goal 3. Improve, expand, and manage open space-related recreational opportunities.**  
**Objectives**  
 - A. Educate residents regarding the existence and availability of open space-related recreation areas.  
 - B. Improve condition of Town's open space-related recreation areas.  
 - C. Work with State agencies to incorporate use of state-owned land adjacent to Town-owned land for open space-related recreational opportunities such as hiking and other natural resource related activities.  
 - D. Cooperate and collaborate with nearby/adjacent towns to formalize agreements regarding Mt. Pisgah, Lake Chauncy, and Westborough State Hospital.

**Goal 4. Improve, expand, and manage recreation opportunities, facilities and programs.**  
**Objectives**  
 - A. Continue to raise awareness of Town recreation opportunities, facilities and programs.  
 - B. Continue to evaluate Town recreation opportunities, facilities and programs.  
 - C. Develop a resource development strategy or business plan to support the recreation department staff, activities (including program scholarships), recreation area maintenance and improvements.  
 - D. Improve condition of Town's recreation properties.  
 - E. Work with State agencies to incorporate use of state-owned land adjacent to Town-owned land for active recreation.  
 - F. Increase access and use of recreation facilities and programs to more users.



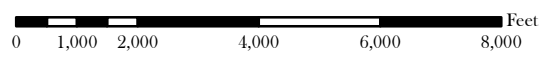
# Town of Northborough Open Space Plan



## Map 13 Action Plan Map Goals and Objectives

**Legend**

- Limited, Non-Profit
- Limited, Private
- Limited, Public
- Permanent, Non-Profit
- Permanent, Private
- Permanent, Public



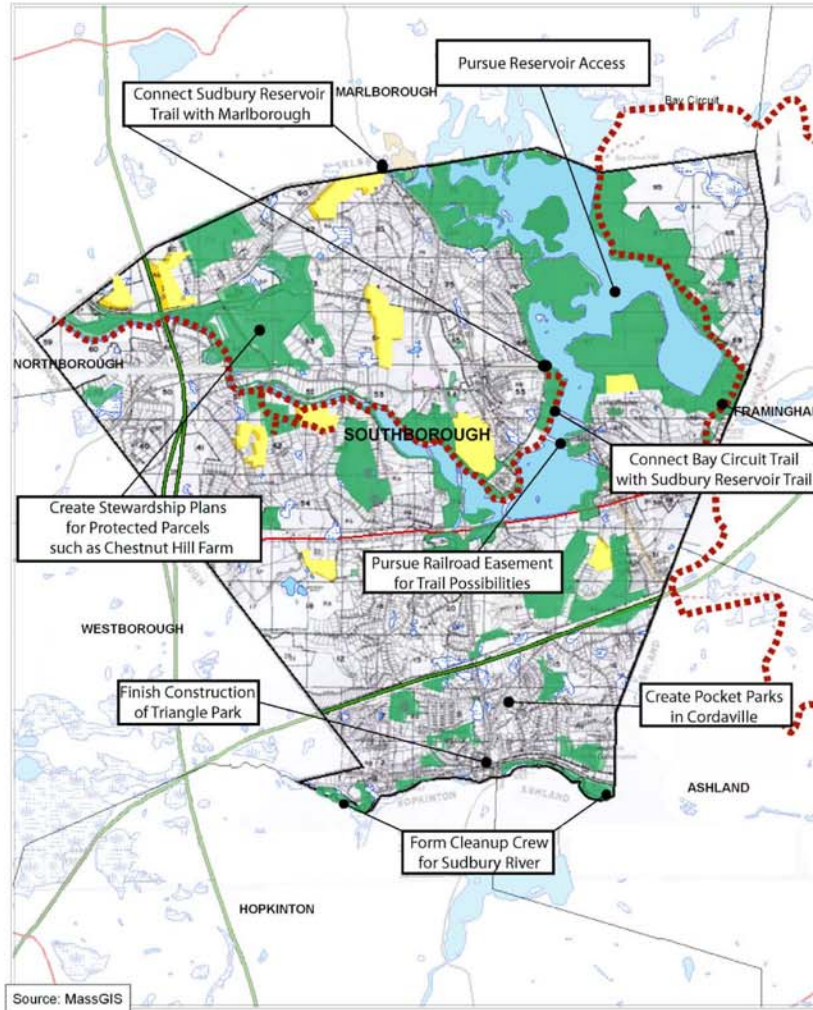
This map was produced by the Town of Northborough Geographic Information System (GIS) using data derived from aerial photography and/or cadastral mapping performed by the James W. Sewall Company, Sanborn Map Company and data from MassGIS.

This map is part of a series created in coordination with the Central Massachusetts Regional Planning Commission (CMRPC) for use in the Town's revised Open Space Plan.

This map is for planning purposes only and should not be used for larger scale analysis. The Town of Northborough, CMRPC or any of its respective subcontractors shall not be held liable for any use of the data or images shown on this map, nor is any warranty of accuracy expressed. All uses of this map are subject to field verification.

Questions should be directed to the MIS/GIS Department at (508) 393-1524 or [gis@town.northborough.ma.us](mailto:gis@town.northborough.ma.us).

March 2010



**Some Other General Actions:**

- Identify and prioritize parcels for conservation protection
- Satisfy town-wide need for recreation facilities
- Update sidewalk Master Plan
- Digitize parcel data
- Promote cluster development
- Certify wetlands, vernal pools and intermittent streams

**Legend**

- ..... Existing Trails
- Ch 61 Lands
- Protected Lands








## Five-Year Action Plan

Completion of actions such as these help provide connections and recreational opportunities within town. Some of them also provide the town planners with more information to aid future decisions and foster responsible development while preserving and maintaining open space.

## Southborough Open Space and Recreation Plan 2008

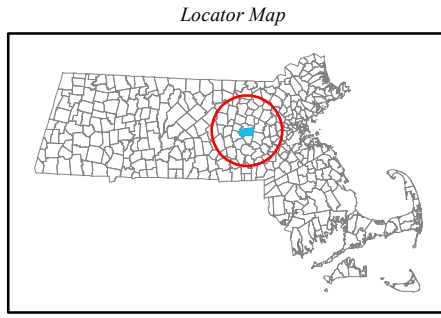
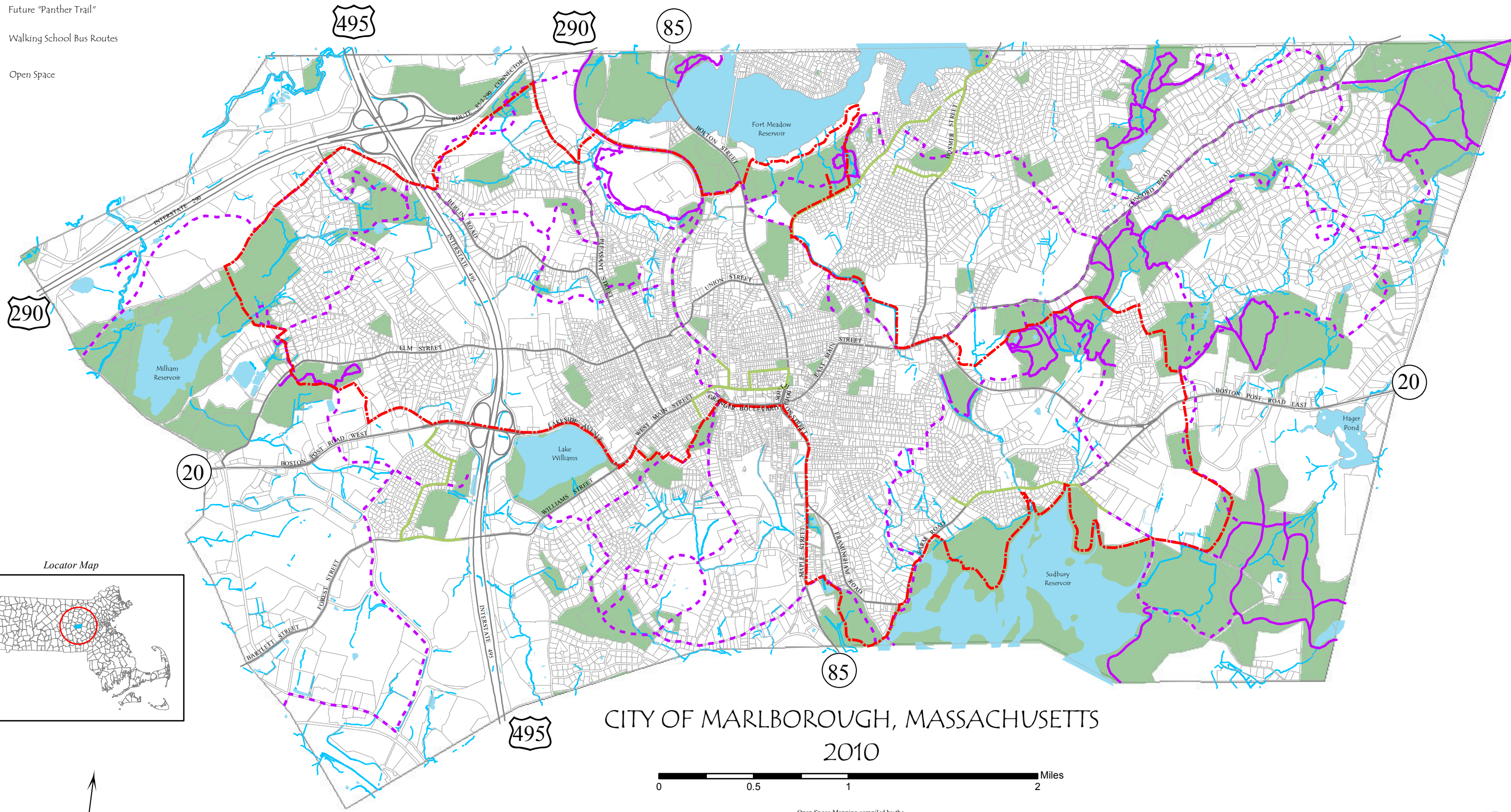
Conway School of Landscape Design  
March 2006  
Jennifer McElligott, Brian Trippe, Greg Walzer

Map Explanation

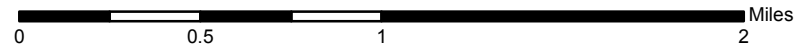
-  Existing Trail System
-  Possible Trail System Linkages
-  Future "Panther Trail"
-  Walking School Bus Routes
-  Open Space

# OPEN SPACE PLAN INTERCOMMUNITY TRAIL LINKS

MAP 8



CITY OF MARLBOROUGH, MASSACHUSETTS  
2010

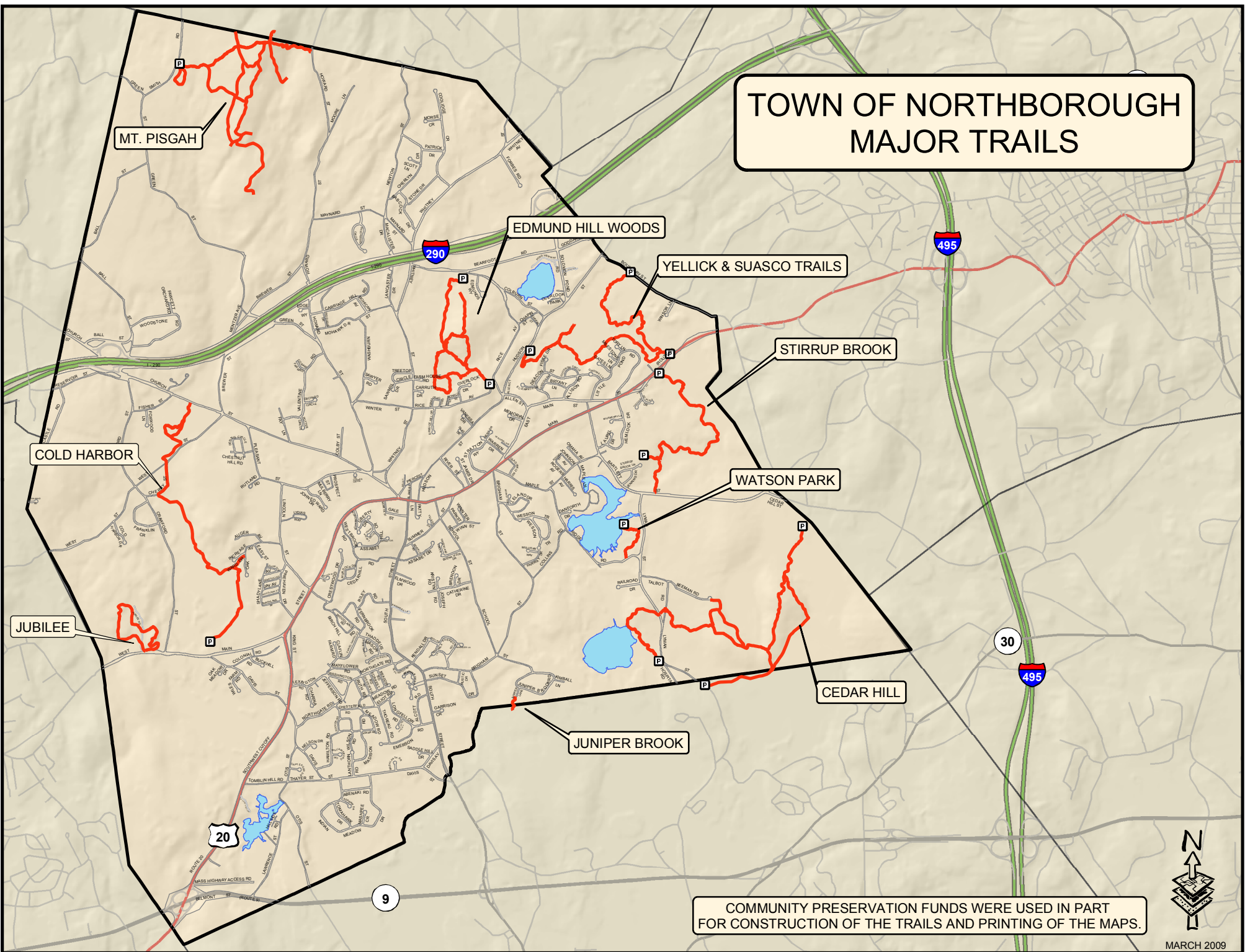


Open Space Mapping compiled by the  
Marlborough Department of Conservation and the  
Department of Public Works.  
Nancy E. Stevens, Mayor  
Priscilla Ryder, Conservation Officer  
Nathaniel Bowen, GIS Administrator

Copyright © 2010 City of Marlborough, Ma.  
ALL RIGHTS RESERVED WORLDWIDE. No part of this publication may be reproduced, adapted, translated, stored in a retrieval system or transmitted in any form or by any means, electronic, mechanical, photocopying, recording, or otherwise, without the prior written permission of the publisher.



# TOWN OF NORTHBOROUGH MAJOR TRAILS



MT. PISGAH

EDMUND HILL WOODS

YELICK & SUASCO TRAILS

STIRRUP BROOK

WATSON PARK

CEDAR HILL

JUNIPER BROOK

JUBILEE

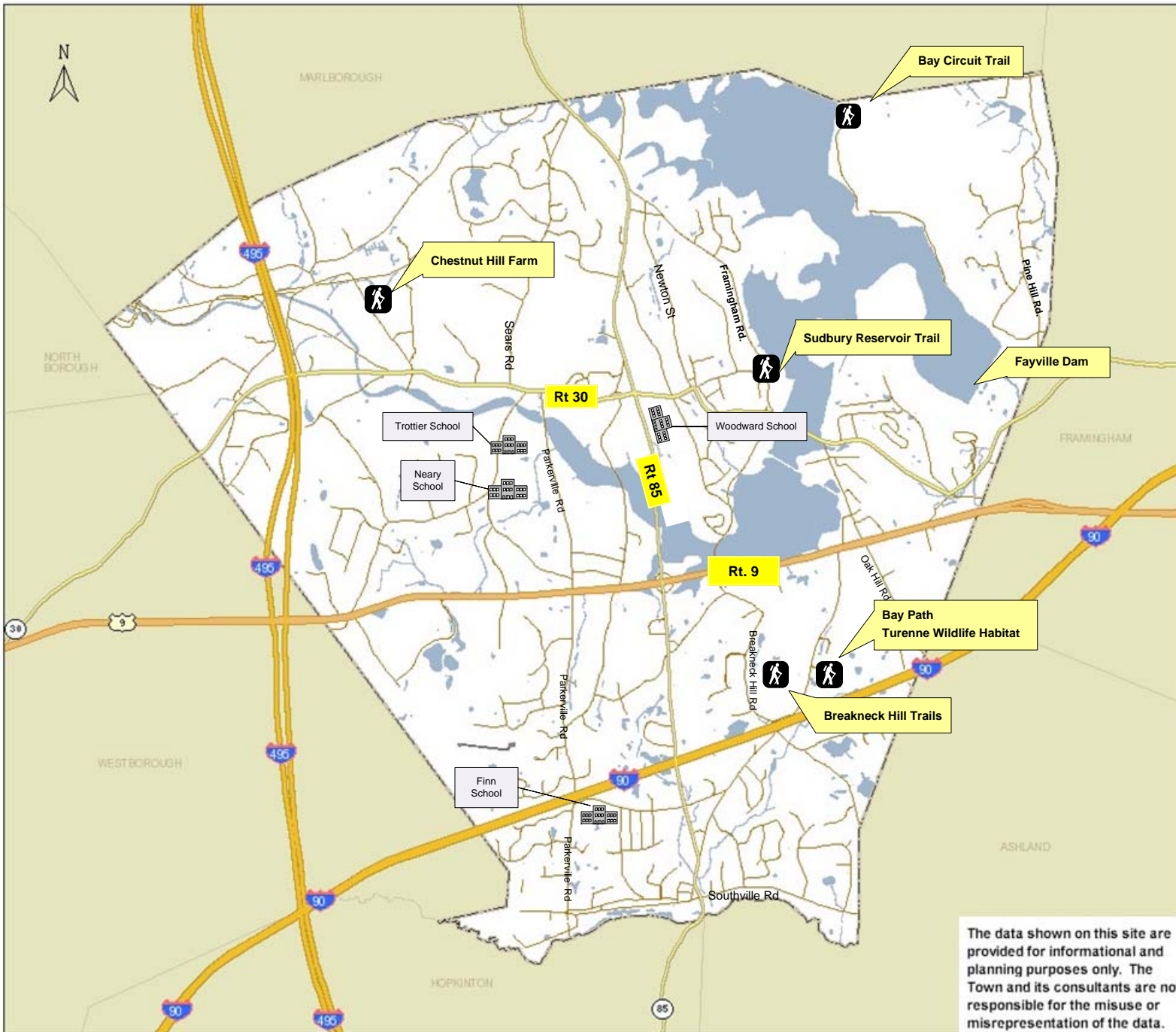
COLD HARBOR

COMMUNITY PRESERVATION FUNDS WERE USED IN PART  
FOR CONSTRUCTION OF THE TRAILS AND PRINTING OF THE MAPS.





- Interstate
- US Highway
- State Highway
- Town Boundary
- Abutting Towns
- Airport
- Streets
- Ponds and Lakes



The data shown on this site are provided for informational and planning purposes only. The Town and its consultants are not responsible for the misuse or misrepresentation of the data.

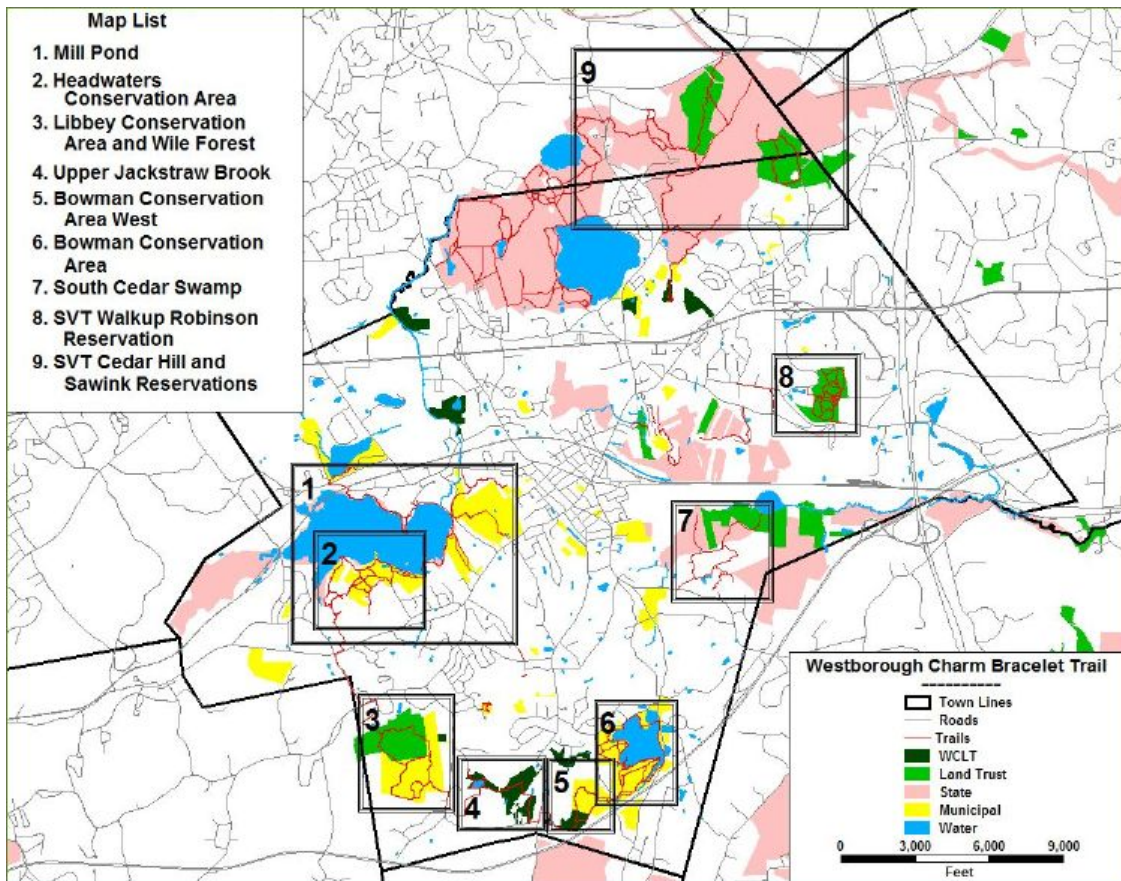






# Charm Bracelet Trail Maps

<a href="#">WCLT Home</a>
<a href="#">Charm Bracelet Home</a>
A Guide to the walking trails in Westborough
<b>Trail Maps</b>
<a href="#">Bowman Conservation Area (pdf)</a>
<a href="#">Bowman West (pdf)</a>
<a href="#">Headwaters Conservation Area (pdf)</a>
<a href="#">Libbey Wile (pdf)</a>
<a href="#">Mill Pond (pdf)</a>
<a href="#">South Cedar Swamp (pdf)</a>
<a href="#">Upper Jackstraw Brook (pdf)</a>
<a href="#">SVT Walkup Robinson (pdf)</a>
<a href="#">SVT Cedar Hill (pdf)</a>
<a href="#">Frequently asked questions</a>
<a href="#">How you can help the Charm Bracelet</a>



*Westborough Community Land Trust, PO Box 838, Westborough , MA 01581*  
 -- [Contact](#) -- [Join!](#) --



# Town of Westborough Trail Map

— Charm Bracelet Trails

— Other Trails

### Open Space

■ State Protected

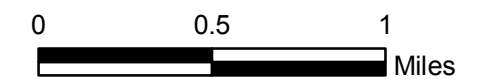
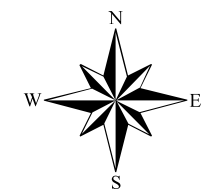
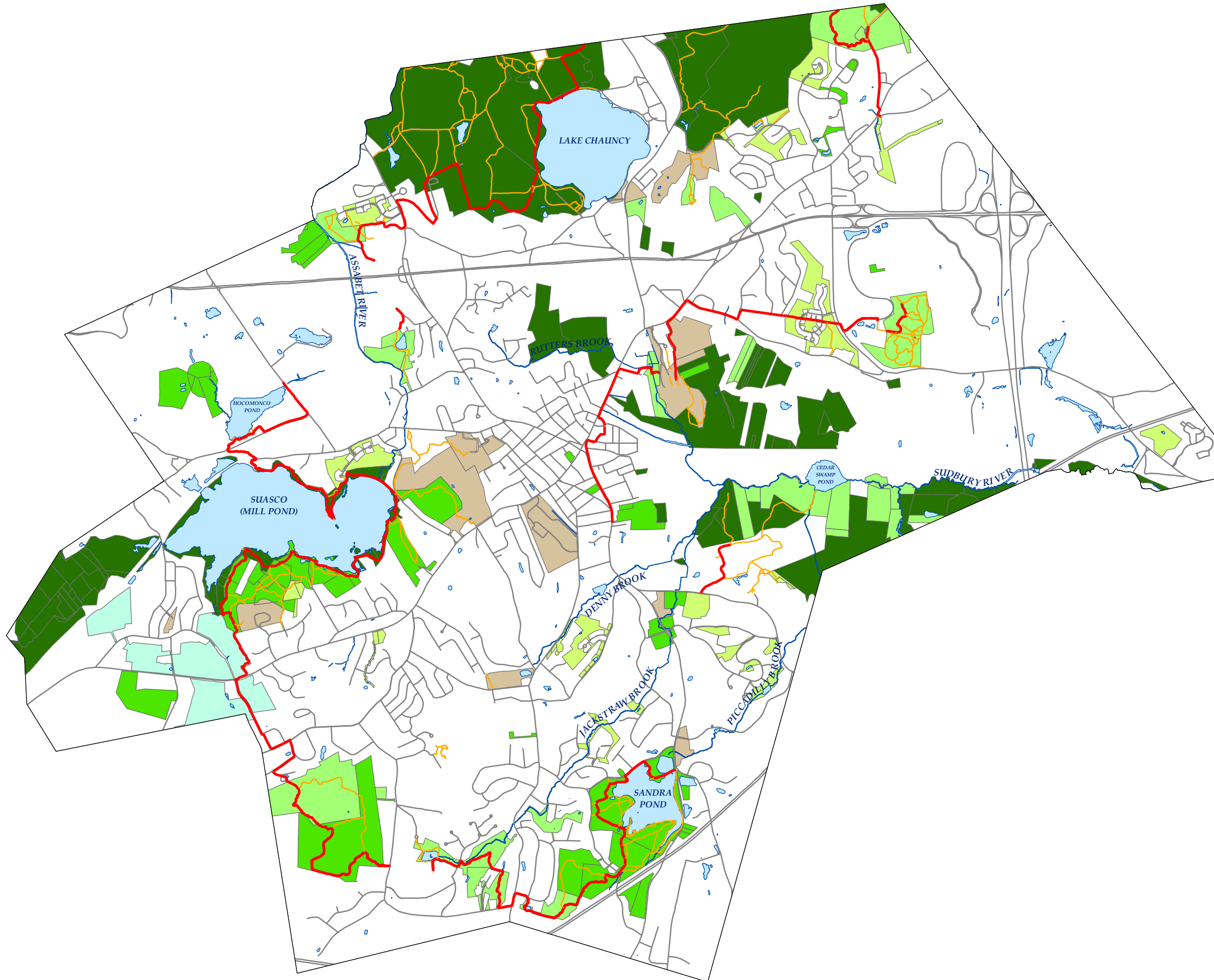
■ Town Protected

■ Land Trust Protected





■ Private Protected

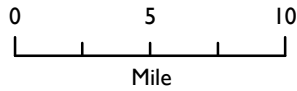
■ APR Protected

■ Town Recreation

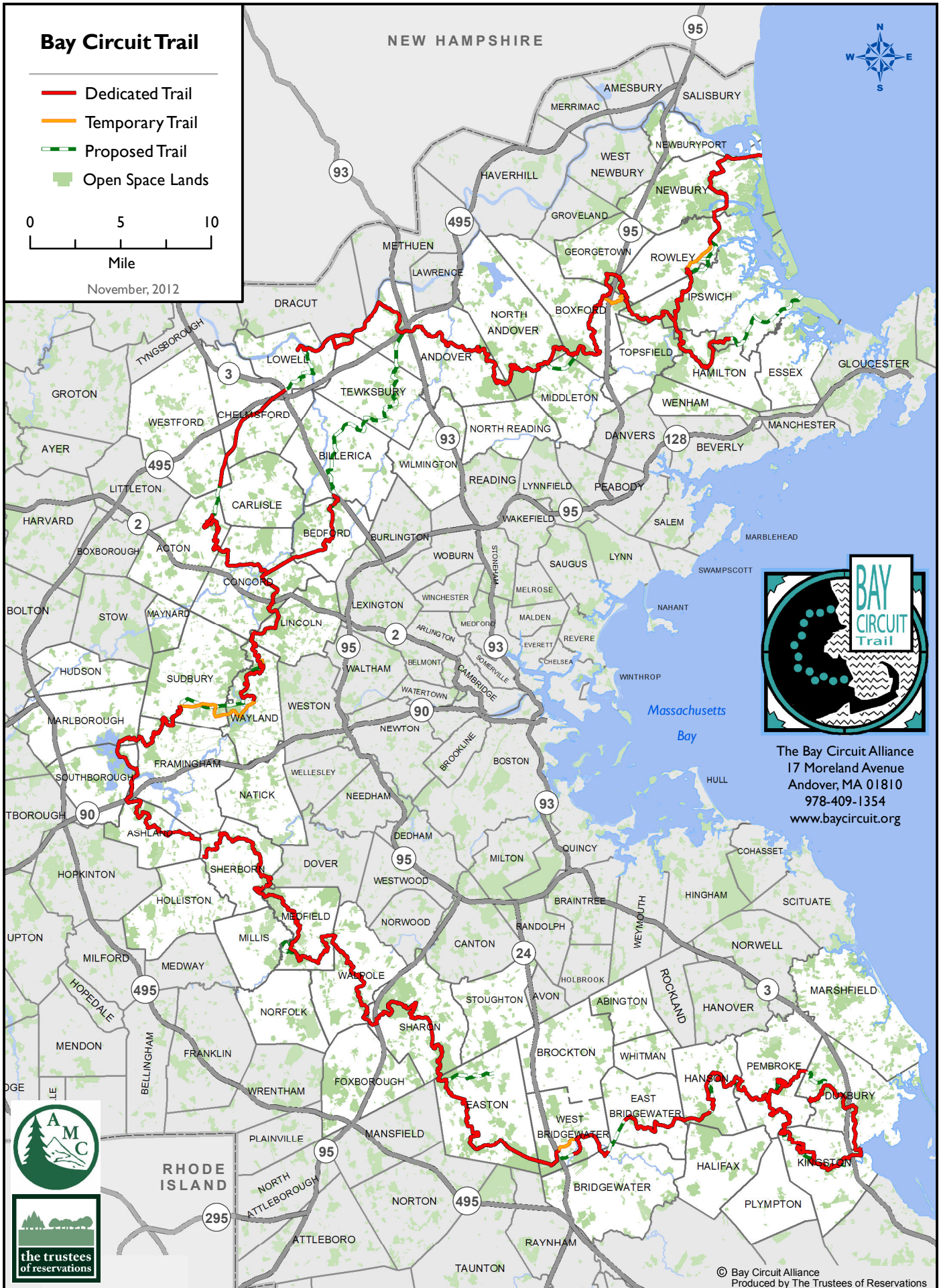


# Bay Circuit Trail

-  Dedicated Trail
-  Temporary Trail
-  Proposed Trail
-  Open Space Lands



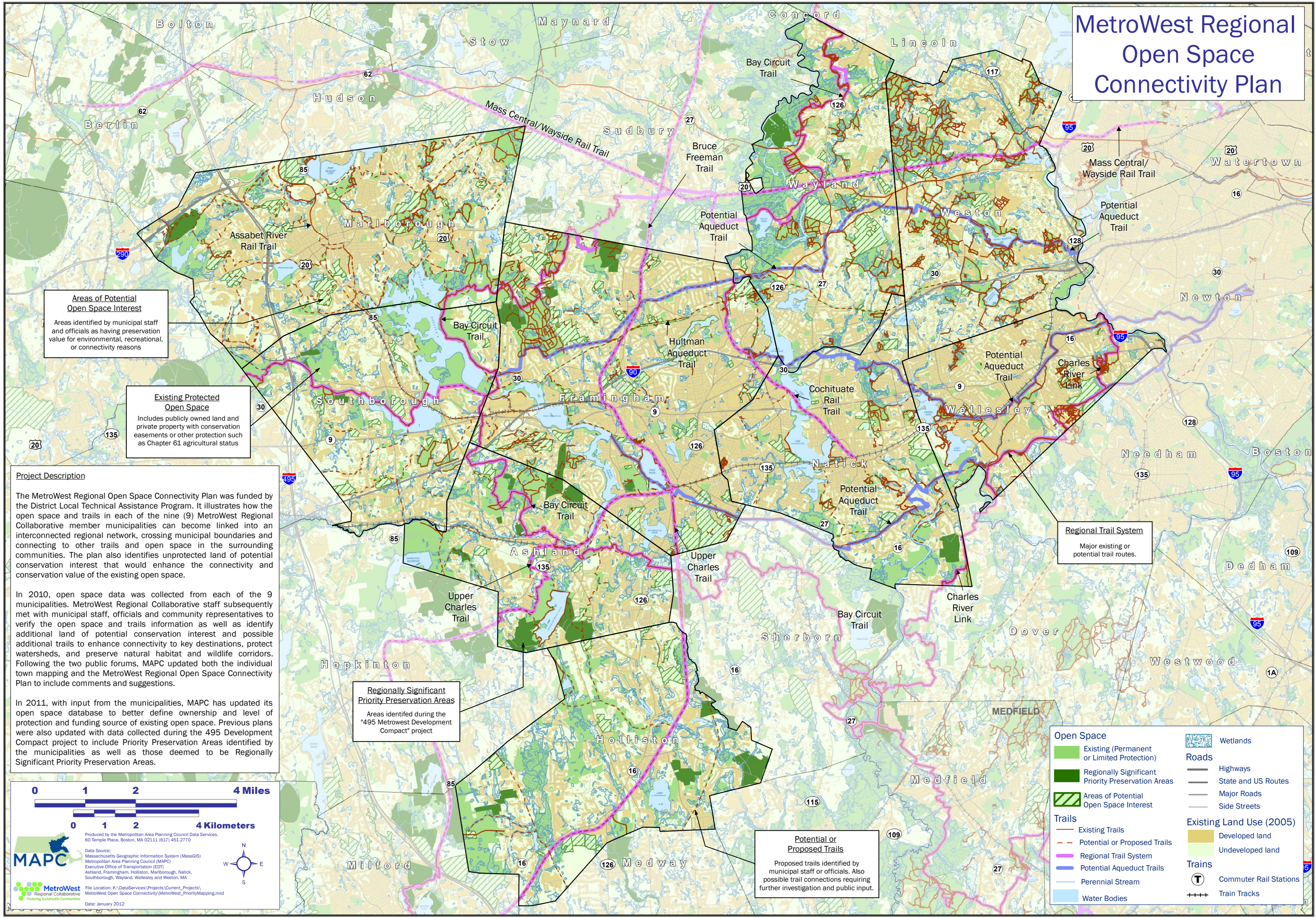
November, 2012



The Bay Circuit Alliance  
17 Moreland Avenue  
Andover, MA 01810  
978-409-1354  
[www.baycircuit.org](http://www.baycircuit.org)



# MetroWest Regional Open Space Connectivity Plan



**Areas of Potential Open Space Interest**  
 Areas identified by municipal staff and officials as having preservation value for environmental, recreational, or connectivity reasons

**Existing Protected Open Space**  
 Includes publicly owned land and private property with conservation easements or other protection such as Chapter 61 agricultural status

**Project Description**

The MetroWest Regional Open Space Connectivity Plan was funded by the District Local Technical Assistance Program. It illustrates how the open space and trails in each of the nine (9) MetroWest Regional Collaborative member municipalities can become linked into an interconnected regional network, crossing municipal boundaries and connecting to other trails and open space in the surrounding communities. The plan also identifies unprotected land of potential conservation interest that would enhance the connectivity and conservation value of the existing open space.

In 2010, open space data was collected from each of the 9 municipalities. MetroWest Regional Collaborative staff subsequently met with municipal staff, officials and community representatives to verify the open space and trails information as well as identify additional land of potential conservation interest and possible additional trails to enhance connectivity to key destinations, protect watersheds, and preserve natural habitat and wildlife corridors. Following the two public forums, MAPC updated both the individual town mapping and the MetroWest Regional Open Space Connectivity Plan to include comments and suggestions.

In 2011, with input from the municipalities, MAPC has updated its open space database to better define ownership and level of protection and funding source of existing open space. Previous plans were also updated with data collected during the 495 Development Compact project to include Priority Preservation Areas identified by the municipalities as well as those deemed to be Regionally Significant Priority Preservation Areas.

**Regionally Significant Priority Preservation Areas**  
 Areas identified during the "495 Metrowest Development Compact" project

**Regional Trail System**  
 Major existing or potential trail routes.

**Potential or Proposed Trails**  
 Proposed trails identified by municipal staff or officials. Also possible trail connections requiring further investigation and public input.

0 1 2 4 Miles  
 0 1 2 4 Kilometers

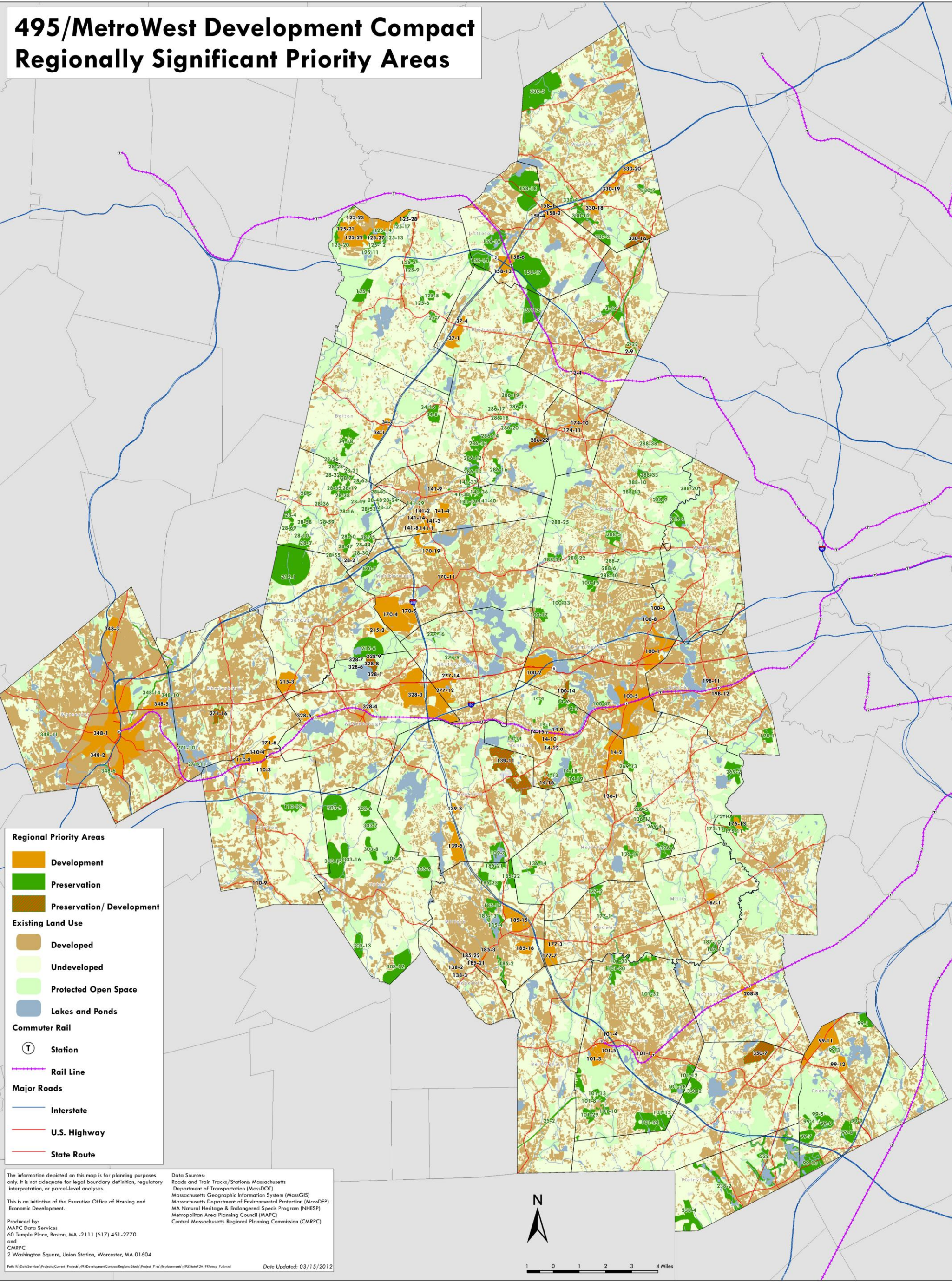
Produced by the Metropolitan Area Planning Council Data Services, 60 Temple Place, Boston, MA 02111 (617) 451-2770

**MAPC**  
 Massachusetts Geographic Information System (MassGIS)  
 Metropolitan Area Planning Council (MAPC)  
 Executive Office of Transportation (EOT)  
 Ashland, Frammingham, Holliston, Marlborough, Natick, Southborough, Wayland, Wellesley and Weston, MA

File Location: K:\DataServices\Projects\Current\_Projects\MetroWest Open Space Connectivity\MetroWest\_PriorityMapping.mxd  
 Date: January 2012

<b>Open Space</b>	<b>Wetlands</b>
Existing (Permanent or Limited Protection)	Wetlands
Regionally Significant Priority Preservation Areas	<b>Roads</b>
Areas of Potential Open Space Interest	Highways
<b>Trails</b>	State and US Routes
Existing Trails	Major Roads
Potential or Proposed Trails	Side Streets
Regional Trail System	<b>Existing Land Use (2005)</b>
Potential Aqueduct Trails	Developed land
Perennial Stream	Undeveloped land
Water Bodies	<b>Trains</b>
	Commuter Rail Stations
	Train Tracks

# 495/MetroWest Development Compact Regionally Significant Priority Areas



**Regional Priority Areas**

- Development
- Preservation
- Preservation/ Development

**Existing Land Use**

- Developed
- Undeveloped
- Protected Open Space
- Lakes and Ponds

**Commuter Rail**

- T Station
- Rail Line

**Major Roads**

- Interstate
- U.S. Highway
- State Route

The information depicted on this map is for planning purposes only. It is not adequate for legal boundary definition, regulatory interpretation, or parcel-level analyses.

This is an initiative of the Executive Office of Housing and Economic Development.

Produced by:  
MAPC Data Services  
60 Temple Place, Boston, MA -2111 (617) 451-2770  
and  
CMRPC  
2 Washington Square, Union Station, Worcester, MA 01604

**Data Sources:**  
Roads and Train Tracks/Stations: Massachusetts Department of Transportation (MassDOT)  
Massachusetts Geographic Information System (MassGIS)  
Massachusetts Department of Environmental Protection (MassDEP)  
MA Natural Heritage & Endangered Species Program (NHESP)  
Metropolitan Area Planning Council (MAPC)  
Central Massachusetts Regional Planning Commission (CMRPC)



## **Appendix B – Stakeholder Meeting Materials**

## **Boroughs Park Feasibility Study**

August 27, 2012

7:00 – 8:30 pm

Southborough Senior Centers

### **AGENDA**

- |   |         |
|---|---------|
| 1. Welcome and Introductions                          | 7:00 PM |
| 2. DLTA Project Overview                              | 7:10 PM |
| a. Background   |         |
| b. Major Tasks and Desired Outcomes                   |         |
| c. Discussion   |         |
| 3. Discussion of Ongoing and Previous Related Efforts | 7:35 PM |
| 4. Discussion of Next Steps                           | 8:05 PM |
| 5. Meeting Conclusion                                 | 8:30 PM |

---

#### *Suggested Ground Rules for Discussion*

- Everyone is encouraged to speak.
- One person should speak at a time.
- All ideas should be treated with respect; there are no right/wrong ideas or answers.
- Create a safe environment where all opinions can be expressed.
- While expressing something you feel strongly about, be careful not to put down anyone.
- Try not to use acronyms or abbreviations.
- Be concise.
- Turn off the sound on your cell phone.

## **Boroughs Park Feasibility Study**

Tuesday, November 20, 2012

7:00 – 9:00 pm

Conference Room B, 1<sup>st</sup> floor

[Northborough Town Offices](#)

### **AGENDA**

#### **Objectives:**

- *Complete identification of municipal and organizational partners working on open space, trail and other related conservation initiatives in the Boroughs study area*
- *Complete identification of open space, trail and other related conservation initiatives in the Boroughs study area*
- *Gather comments regarding potential structures for a regional collaboration*

- |  |         |
|--|---------|
| 1. Welcome and Introductions   | 7:00 PM |
| a. Review of Meeting Objectives                                      |         |
| 2. DLTA Project Background   | 7:10 PM |
| a. Regional Coordination   |         |
| b. Trail Maintenance   |         |
| c. Promotion of Regional Open Space and Trail Resources              |         |
| 3. Review of Potential Municipal and Organizational Partners         | 7:20 PM |
| 4. Review of Related Open Space, Trail and Other Related Initiatives | 7:50 PM |
| 5. Discussion of Potential Regional Collaboration Models             | 8:20 PM |
| 6. Next Steps and Meeting Conclusion                                 | 8:50 PM |

---

#### *Suggested Agreements for Discussion*

- Everyone is encouraged to speak.
- One person should speak at a time.
- All ideas should be treated with respect; there are no right/wrong ideas or answers.
- Create a safe environment where all opinions can be expressed.
- While expressing something you feel strongly about, be careful not to put down anyone.
- Try not to use acronyms or abbreviations.
- Be concise.
- Turn off the sound on your cell phone.



## **Boroughs Park Feasibility Study**

### **Project Meeting #3**

Monday, January 7, 2013

7:00 – 9:00 pm

Town Hall Selectmen's Meeting Room

[Northborough Town Offices](#)

### **AGENDA**

#### **Objectives:**

- *Complete review of potential activities/roles for a regional collaboration*
- *Identify and prioritize next steps for regional collaboration*

- |  |         |
|--|---------|
| 1. Welcome and Introductions   | 7:00 PM |
| a. Review Project Background and Meeting Objectives                  |         |
| 2. Community Exchange  | 7:10 PM |
| a. Brief overviews of ongoing related work in the Boroughs           |         |
| 3. Review of Potential Activities/Roles for a Regional Collaboration | 7:30 PM |
| 4. Identify Next Steps for Regional Collaboration                    | 7:45 PM |
| 5. Prioritize Next Steps for Regional Collaboration                  | 8:00 PM |
| 6. Identify Next Meeting Date and Meeting Conclusion                 | 8:45 PM |

---

#### *Suggested Agreements for Discussion*

- Everyone is encouraged to speak.
- One person should speak at a time.
- All ideas should be treated with respect; there are no right/wrong ideas or answers.
- Create a safe environment where all opinions can be expressed.
- While expressing something you feel strongly about, be careful not to put down anyone.
- Try not to use acronyms or abbreviations.
- Be concise.
- Turn off the sound on your cell phone.

## **Boroughs Trail Feasibility Study - Meeting Participants**

Arthur Bergeron	Marlborough Economic Development Corporation
Pricilla Ryder	Marlborough Conservation Commission
Bill Coder	Northborough Open Space Committee
Bob Mihalek	Northborough Trails Committee
Kathy Joubert	Northborough Planning Board
Doreen Ferguson	Southborough Recreation Commission
Frederica Gillespie	Southborough Open Space Preservation Commission, Community Preservation Commission
Sally Watters	Southborough Open Land Foundation
Deborah Costine	Southborough Open Land Foundation, Bay Circuit Trail
Eric Denoncourt	Southborough Planning Board
Beth Rosenblum	Southborough Conservation Commission
Tim Kemper	Southborough Trails
Jim Robbins	Westborough Planning Board
Don Burn	Westborough Community Land Trust, Westborough Open Space Committee, Sudbury Valley Trustees, OARS
Dan Stimson	Sudbury Valley Trustees
Eli Rosinha	The Trustees of Reservations
Trish Settles	Central Massachusetts Regional Planning Commission
Vera Kalias	Central Massachusetts Regional Planning Commission
Barry Keppard	Metropolitan Area Planning Council

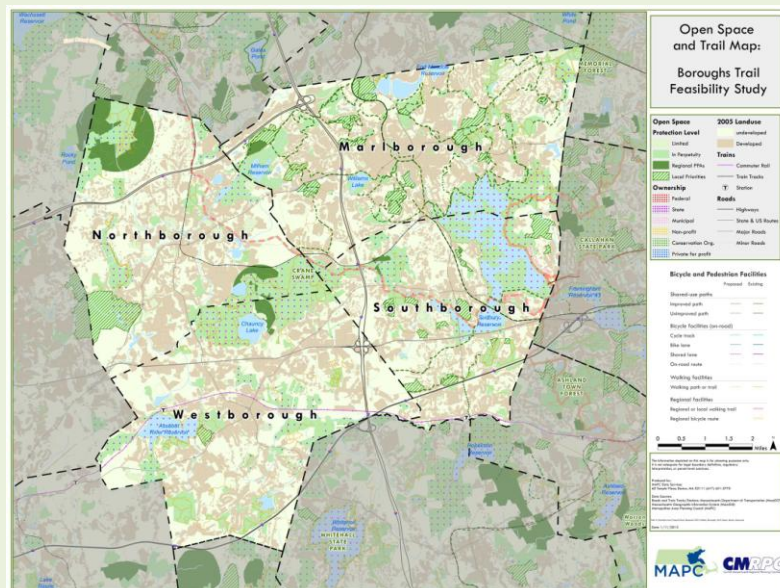
# Boroughs Trail Feasibility Study

Feasibility analysis for the regional coordination and promotion of a potential trail corridor and network in Marlborough, Northborough, Southborough and Westborough

## Project Fact Sheet

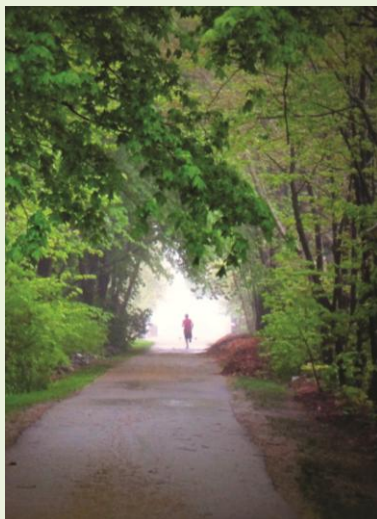
The Boroughs Trail Feasibility Study is exploring the feasibility of developing a coordinated approach to trails development, management and promotion in the city of Marlborough and the towns of Northborough, Southborough and Westborough.

The project will bring together local, state and private landowners together with business leaders and park, recreation and health advocates to discuss this approach.



Comprised of a chain of separately owned trails under public and private stewardship, the Boroughs Trail would be a regional recreational asset and economic development tool. The trail and the network of linkages would support a regional identity and provide an interconnected recreational hub having a long term impact on economic development, housing, public health, community engagement, equity and the quality of life in the Boroughs.

For more information, please visit:  
<http://www.mapc.org/boroughstrail>



This study was funded through the District Local Technical Assistance (DLTA) program. DLTA funds are distributed among the state's 13 Regional Planning Agencies (RPAs) to provide cities and towns with technical assistance to help move municipalities forward in the Commonwealth's key initiatives, including regional collaboration, promoting economic development, best practices in zoning and protecting the environment.

For more information about this study, please contact Trish Settles (Central Massachusetts Regional Planning Commission) at [tsettles@cmrpc.org](mailto:tsettles@cmrpc.org) / (508) 459-3320 or Barry Keppard (Metropolitan Area Planning Council) at [bkeppard@mapc.org](mailto:bkeppard@mapc.org) / (617) 451-2770 x2083.