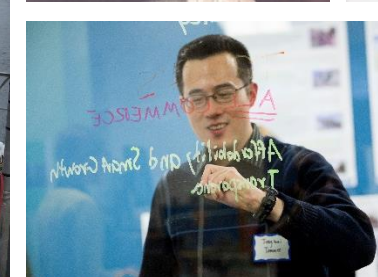
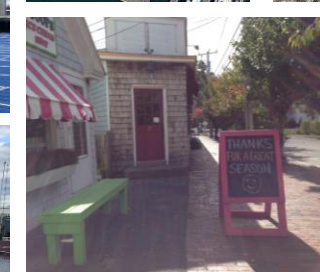
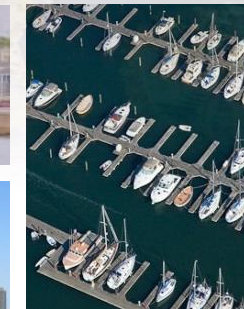
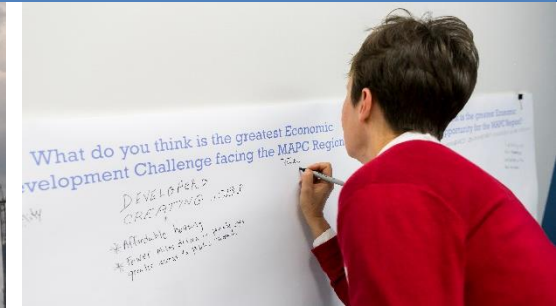


Comprehensive Economic Development Strategy 2015-2020



CEDS: Background



What is the CEDS?

- Regional Economic Development Plan
- Keeping MetroFuture Up to Date
- Response to Regional Prosperity Indicators
- Required EDA Document

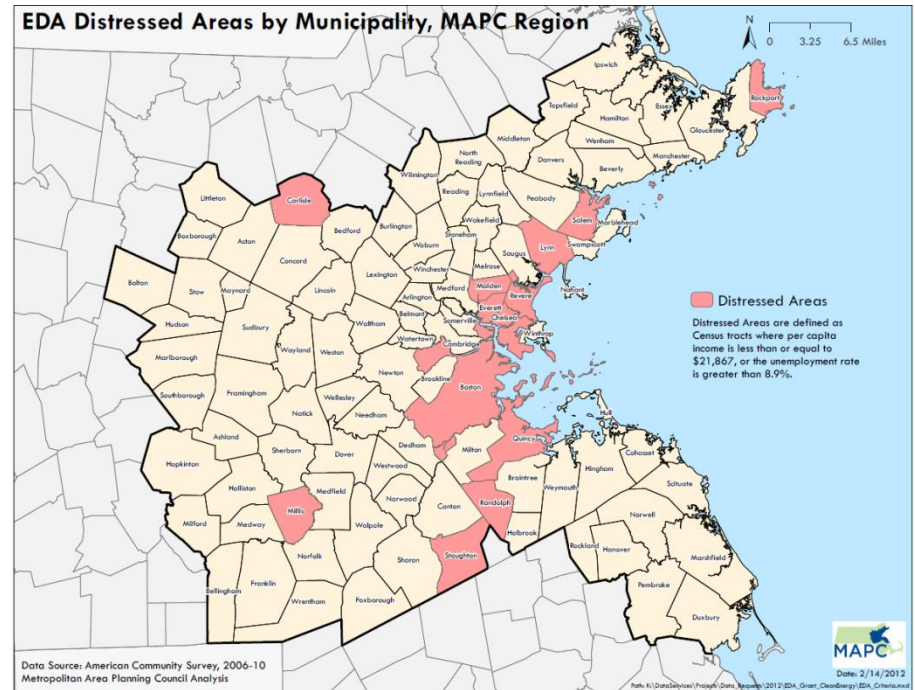


What's Included

- Economic Conditions in the Region
- Regional Strengths, Weaknesses, Opportunities, and Threats Analysis
- Strategic Direction and Action Plan
- Evaluation Framework

Economic Development District

- Contains one geographic area that is subject to economic distress criteria.
- Sufficient size and population with sufficient resources to foster economic development on a regional scale.
- Has an EDA approved CEDS.



Economic Development District in Action

- N2 Innovation Corridor
- Venture Development Center
- The New Maritime Port Economy in Gloucester



CEDS: SWOT Analysis



SWOT Analysis



CEDS Survey

Comprehensive Economic Development Strategy

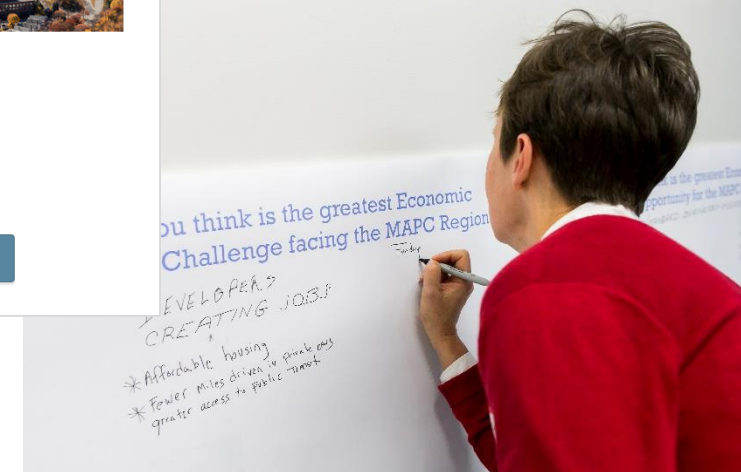
As the regional planning agency for Greater Boston, the Metropolitan Area Planning Council (MAPC) is working on a [Comprehensive Economic Development Strategy \(CEDS\)](#). The CEDS outlines strategies to strengthen the regional economy over the next five years. Your input, as a professional working in economic development or a related field, is respectfully requested. Please feel free to skip any questions that you do not feel adequately equipped to answer.



The survey should take no longer than 10-15 minutes and responses will be taken through **5 PM on April 30th**.

For more information on MAPC and the region that we serve please click [here](#).

Next

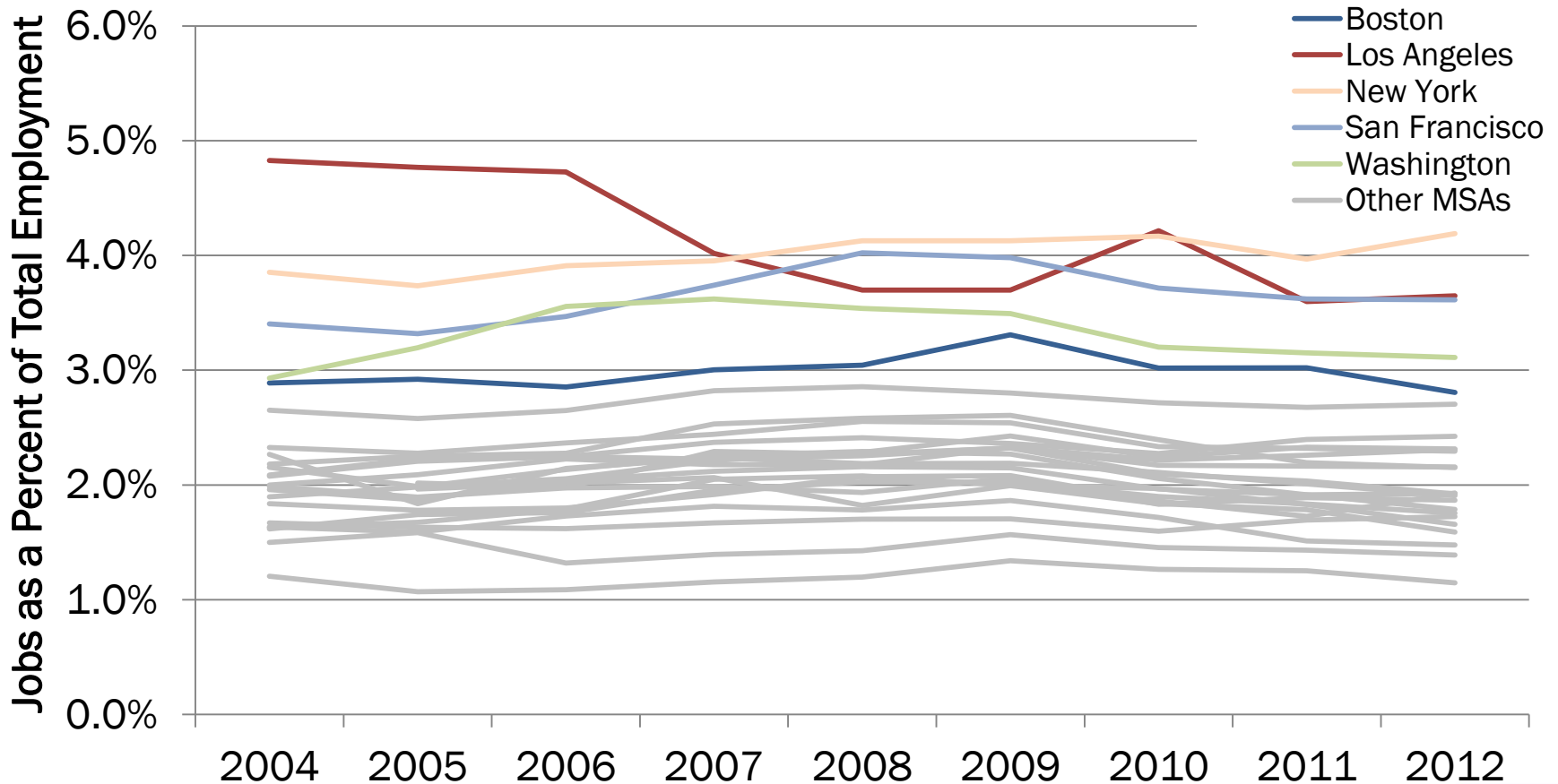


CEDS Highlights



Creative Economy

Jobs in the Creative Class as a Percent of Total Employment



Source: Regional Prosperity Indicators, Bureau of Labor Statistics, Occupational Employment Statistics (OES) Survey, 2004-2012



Creative Economy

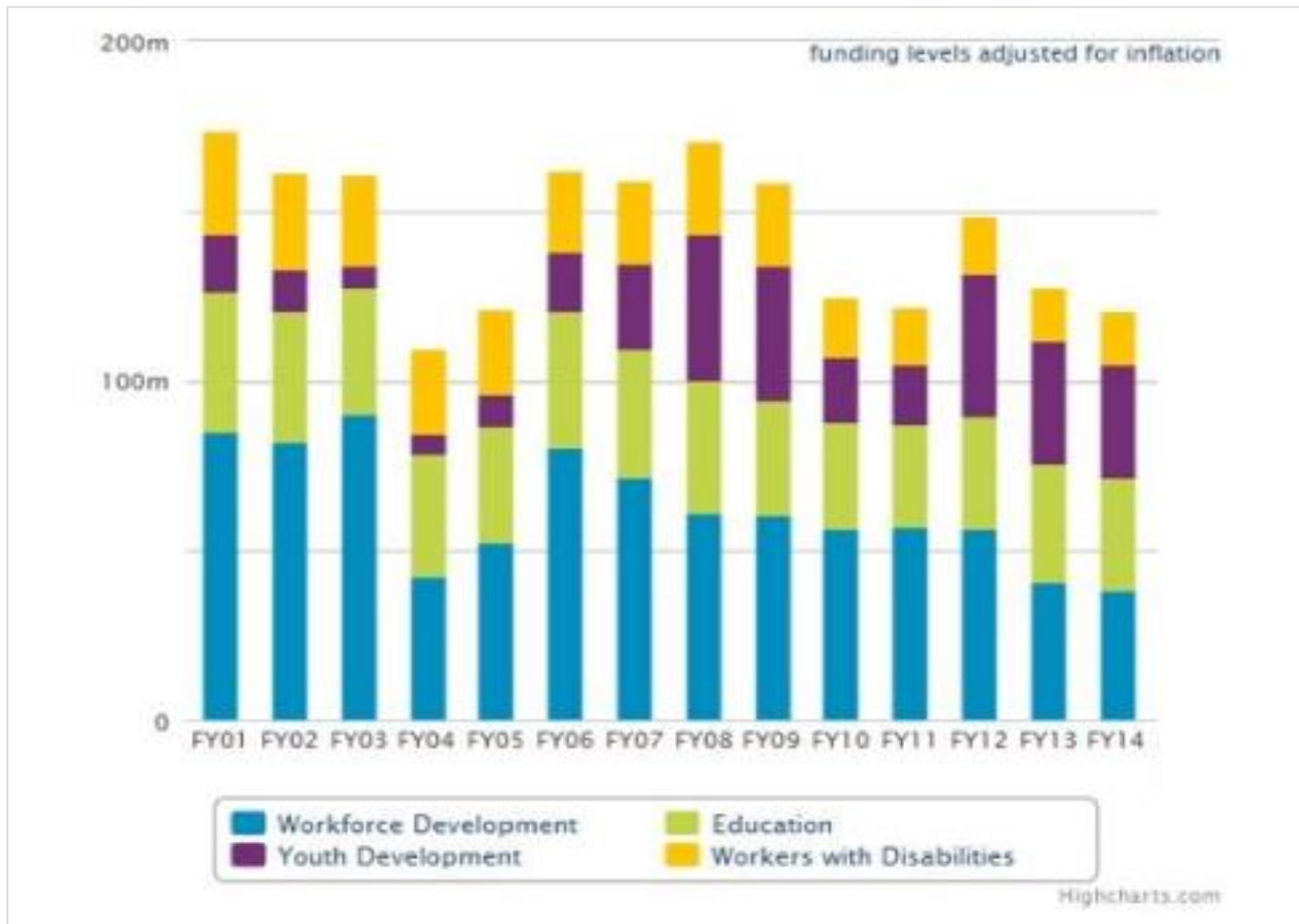
- Place-making efforts & technical assistance to foster and encourage the arts.
- Funding opportunities linked to programs that encourage arts, such as cultural district designations.
- Creation of non-traditional work space.

Small Business

- An Act relative to Parking Advancement for the Revitalization of Communities
- An Act Relative to Creating Community Benefit Districts (CBDs).
- Municipal level policies & programs to assist small business owners.
- Targeted outreach to communities with a large number of small businesses, especially immigrant entrepreneurs, to make them aware of opportunities to access capital.
- Mitigation of small business displacement.



Workforce Development



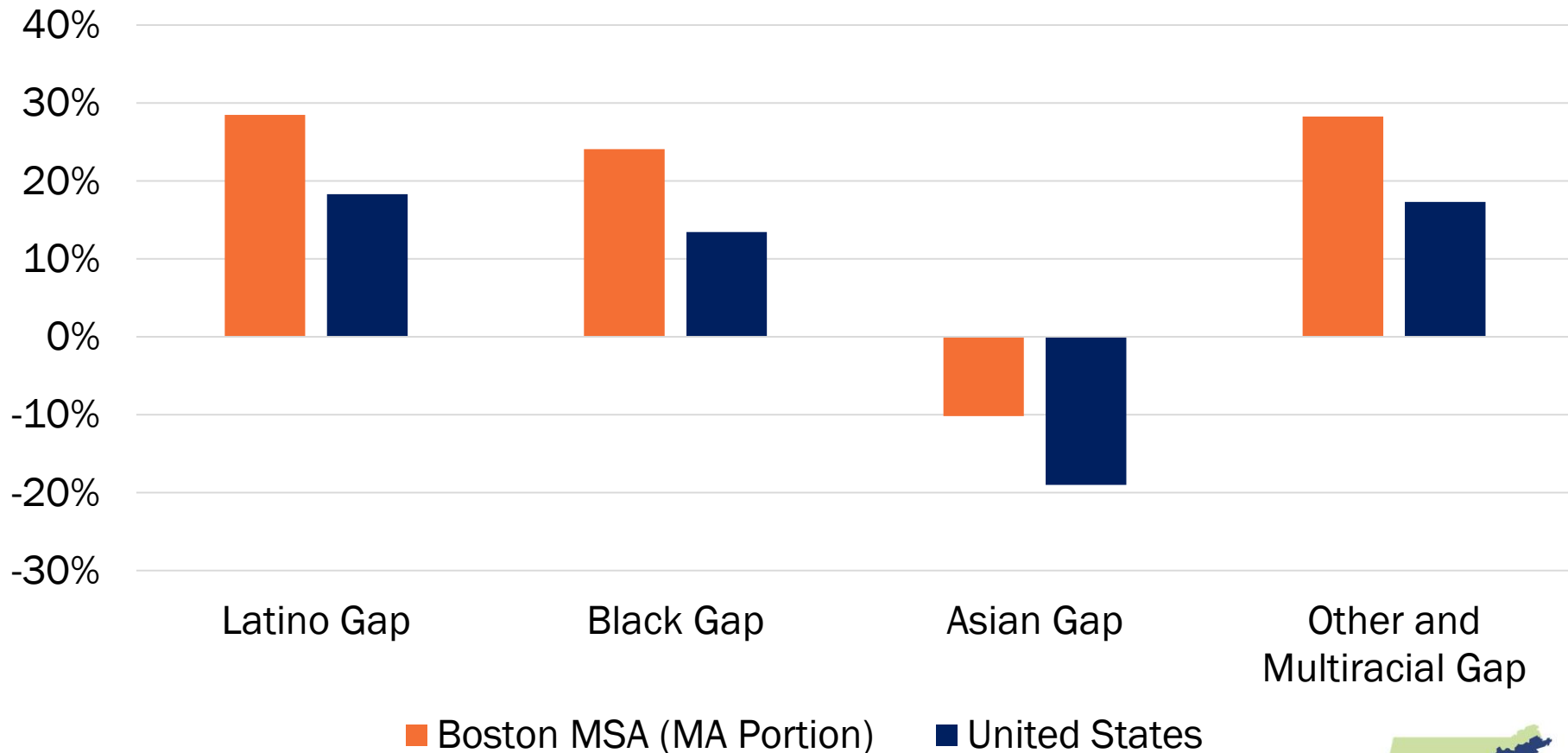
Source: MassBudget, 2014

Workforce Development

- Workforce Competitiveness Trust Fund and the Massachusetts High-Demand Scholarship Program.
- Education of students in high demand fields and fields that have successfully placed graduates in jobs.
- Learn and Earn programs, internships, on-the-job training, and apprenticeship programs.
- Non-profit bundled services (i.e., workforce development, housing services, financial planning).

An Equitable Economy

Bachelors Degree or Higher Attainment Gap for Adults of Color Compared to White Adults



Source: Regional Indicators, ACS 2008-2012 5 Year Data, PUMS 2000 & 2007-2011, ACS 5 Year Data



An Equitable Economy

- Greater access to high-quality preschool education.
- Breaking the link between residential segregation and unequal educational opportunities.
- More progressive tax structure.
- Quality jobs with fair wages & benefits, especially within Leisure & Hospitality
- Adequate and affordable housing production & preservation.

Commercial & Housing Development in Smart Growth Locations

- Development-ready sites in appropriate locations
- State investments reflective of Commonwealth's Sustainable Development Principles and Priority Development & Preservation Mapping.
- Legislative changes that promote smart growth.



A Resilient Economy



- Diversify the region's core industries.
- Focus on growth in clean energy & clean tech, manufacturing & advanced manufacturing, maritime commerce opportunities, and local agriculture.
- Implementation of Regional Climate Adaptation Strategy.
- Risk management & disaster preparedness resources and training to small businesses.
- Business diversification of products and/or service delivery.

Next Steps

- Work through our project & policy work to advance goals & strategies of CEDS.
- Stay actively involved in the preparation of the Commonwealth's Economic Development Plan.
- Explore re-convening groups of interested stakeholders to advance key CEDS strategies and action items.
- Continue to assist with EDA funding proposals throughout the region to ensure consistency with goals & strategies as outlined in the CEDS
- Presentations throughout the region to increase awareness of CEDS.
- Evaluate and monitor our progress in achieving the goals of the CEDS

Questions?

Amanda Chisholm, AICP

Regional Planner II

Metropolitan Area Planning Council

achisholm@mapc.org

617-933-0736

