



Becoming Age-Friendly



**Joining the World Health Organization and AARP
Network of Age-Friendly Communities**

BACKGROUND



The World Health Organization established the Age-Friendly Cities Program to prepare for:

- Population Aging
- Urbanization



LIVABLE COMMUNITIES
Great Places for All Ages™



BACKGROUND

WHO Global Network of Age-friendly Cities and Communities - established in 2010

Goal: connect cities, communities and organizations worldwide with the common vision of making their community a great place to grow up and grow old.



LIVABLE COMMUNITIES
Great Places for All Ages™



An increasingly aging population

- + the desire to age in place
- + housing not suitable for aging in place
- + streets unsafe for non-drivers
- + a lack of public transit options
- + numerous other factors (e.g. employment, distance from family, health issues, isolation, urban and suburban sprawl)

= the reason for the **AARP Livable Communities** initiative and the **AARP Network of Age-Friendly Communities**





Network of Age-Friendly Communities

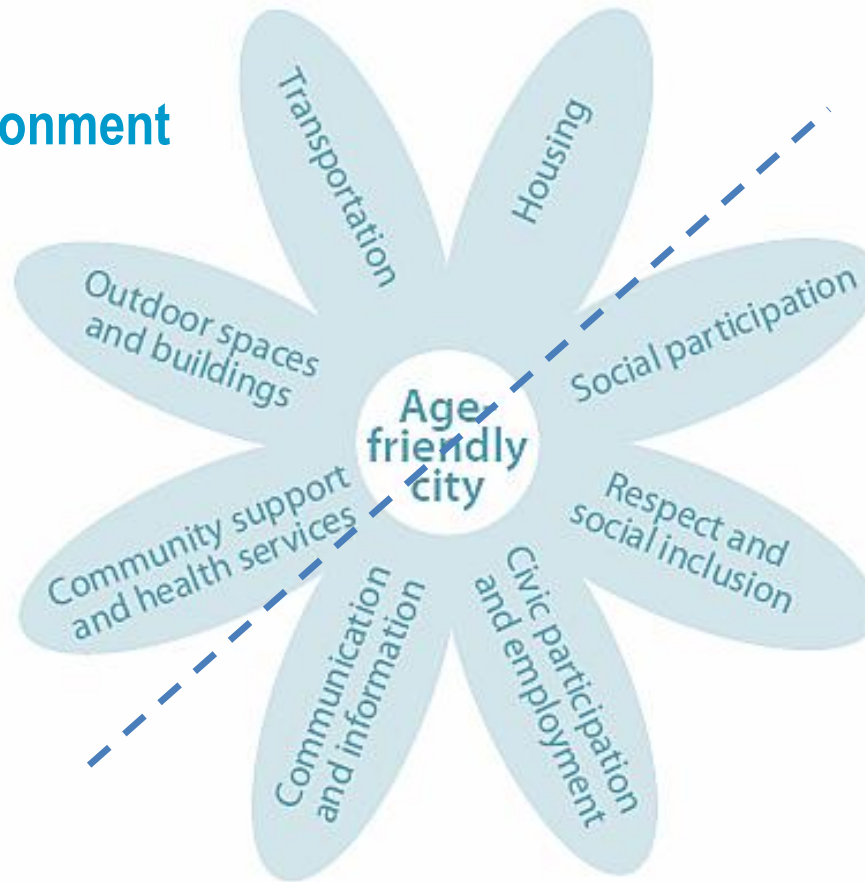


Updated February 16, 2017

Focus of Age-Friendly Communities

8 Domains of Livability

The Built Environment



The Social Environment

AARP Age Friendly Commitment

Cities and communities join the Network and commit to becoming more age-friendly, to share experiences, achievements and lessons learnt with each other.

Membership is not a certification of age-friendliness but it does reflect cities' commitment to listen to the needs of their ageing population, assess and monitor age-friendliness and work collaboratively with older people and across sectors to create accessible physical environments, inclusive social environments, and enabling service infrastructure.

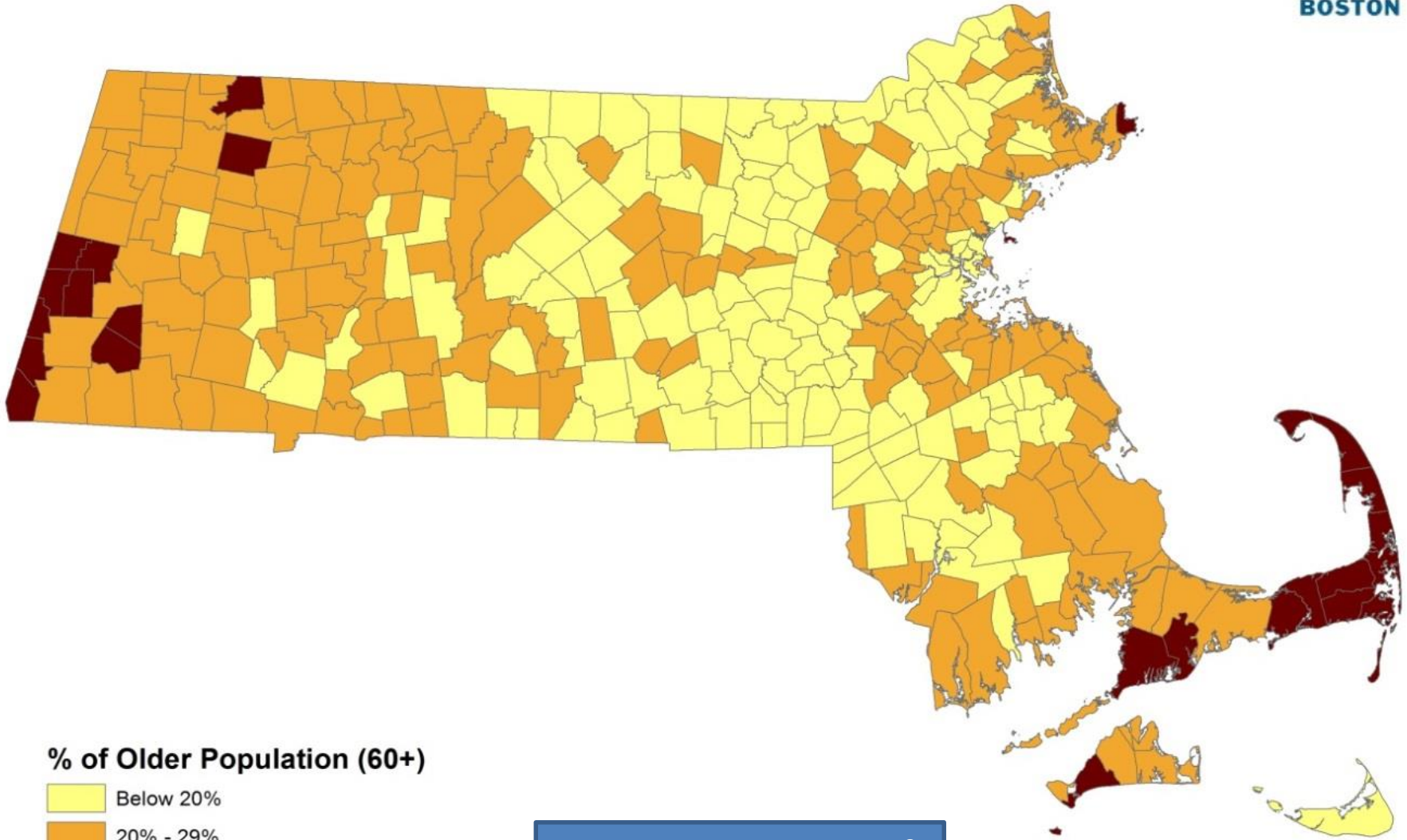
Livable Communities
Great Places for All Ages



Massachusetts Aging Stats & Age Friendly Network



Older Population (60+) in Massachusetts, by Town in 2010 Census

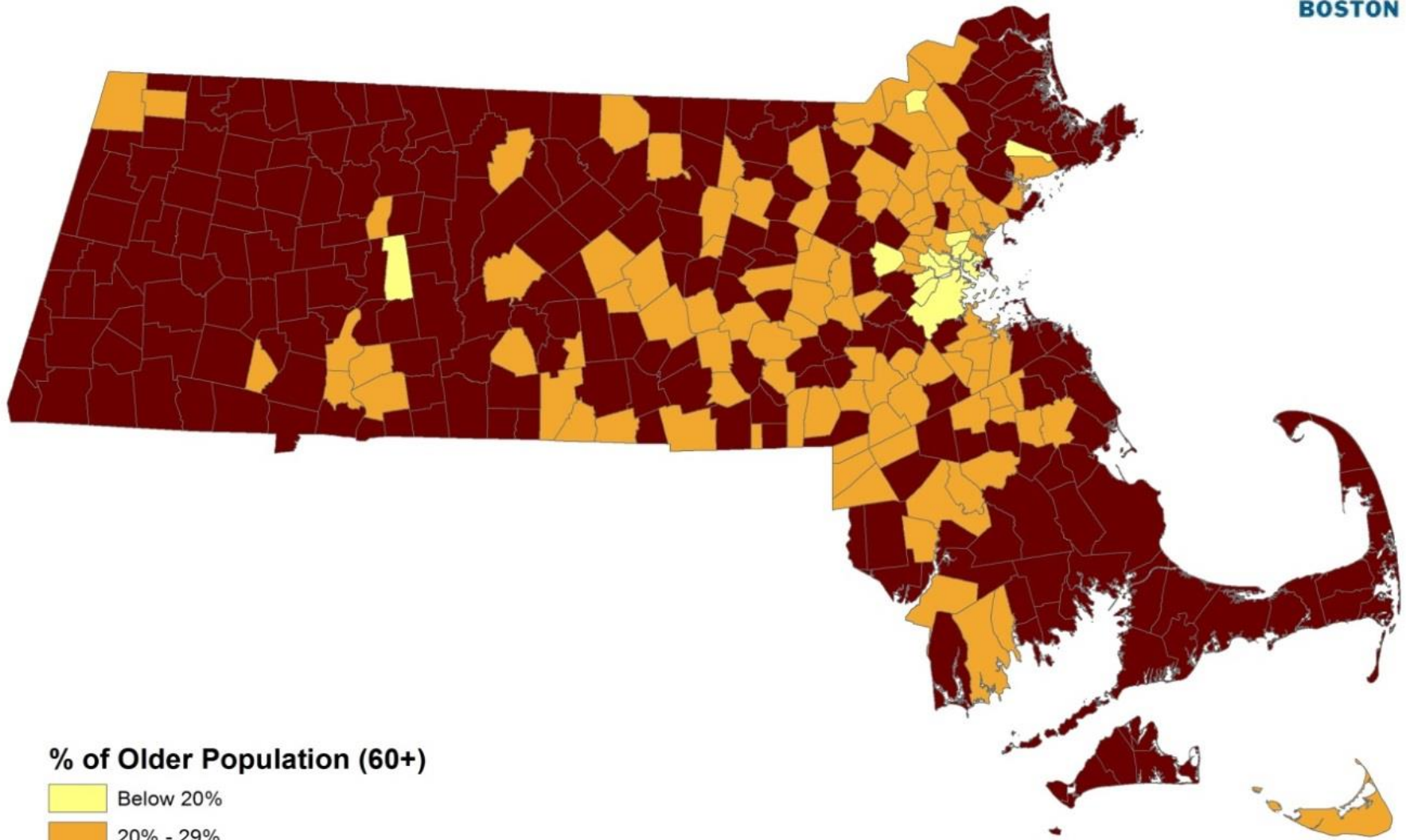


% of Older Population (60+)

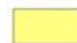


- Below 20%
- 20% - 29%
- 30% or Above

Source: 2010 Census of Population

Older Population (60+) in Massachusetts, by Town in 2030 Projection



% of Older Population (60+)

-  Below 20%
-  20% - 29%
-  30% or Above

Source: Donahue Institute,
University of Massachusetts

Do You See Your Community?

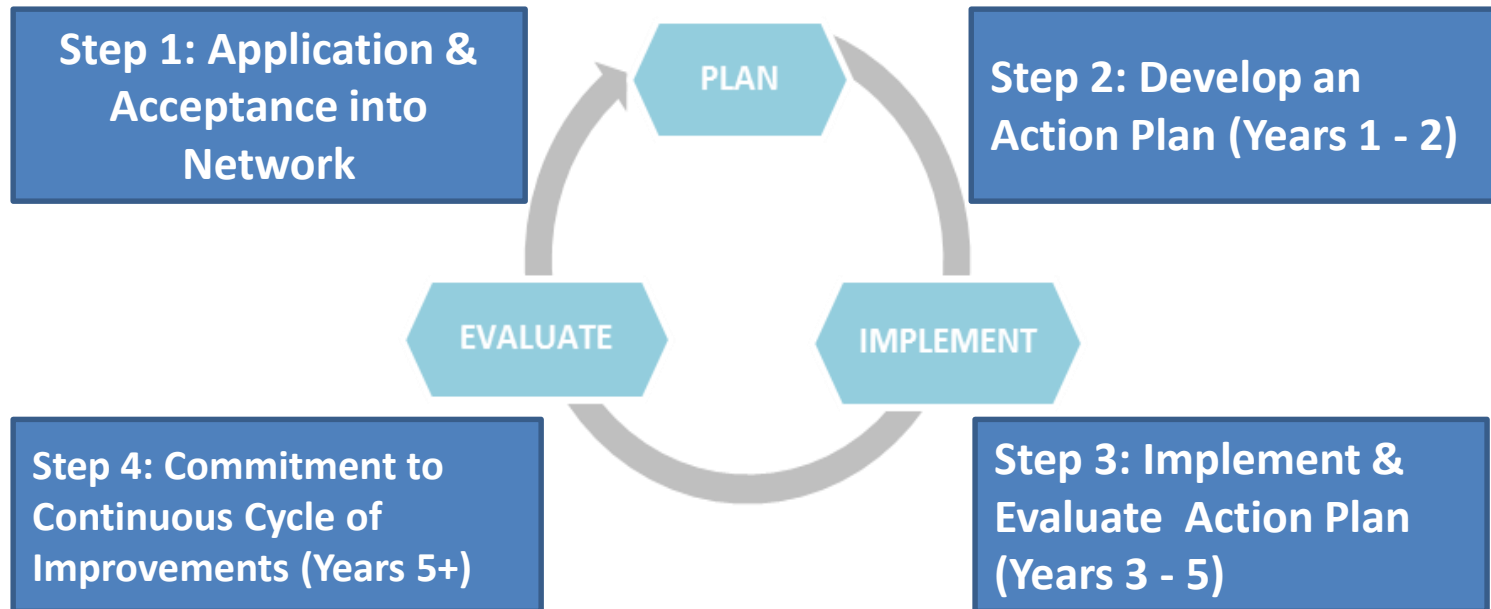
Communities in the MA Age-Friendly Network (16)

Agawam, **Berkshire county** (North Adams, Pittsfield), Boston, Dartmouth, **Martha's Vineyard** (Aquinnah, Chilmark, Edgartown, Oak Bluffs, Vineyard Haven, West Tisbury), New Bedford, Newton, Peabody, Salem, West Springfield

Sample of MA communities interested or in process

Arlington, Acton et. al., Avon, Belmont, Billerica, Cambridge, Dedham, Everett, Longmeadow, Northampton, Quincy, Somerville, Stoughton and more...

AARP Age Friendly Process



Livable Communities
Great Places for All Ages



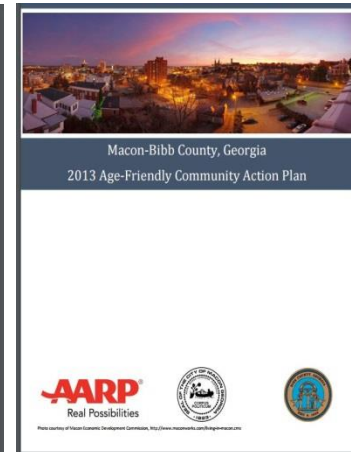
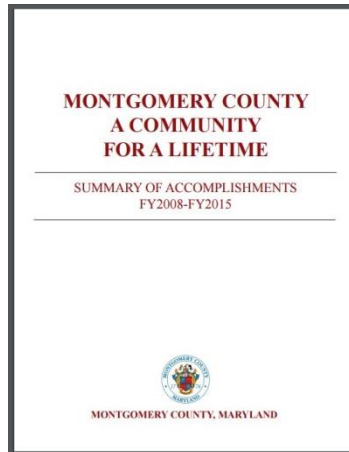
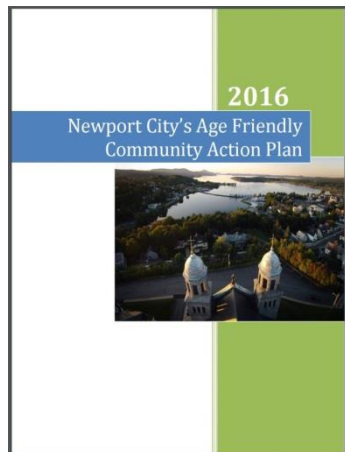
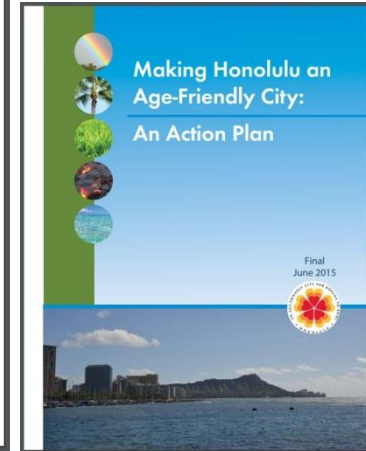
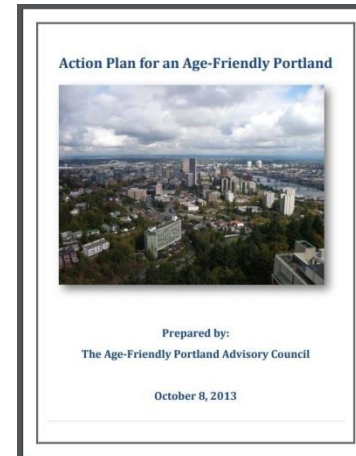
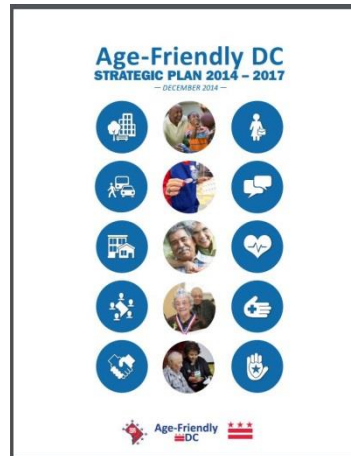
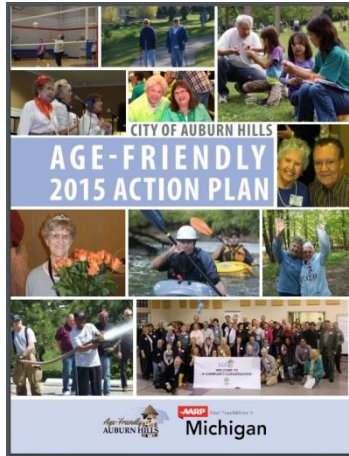
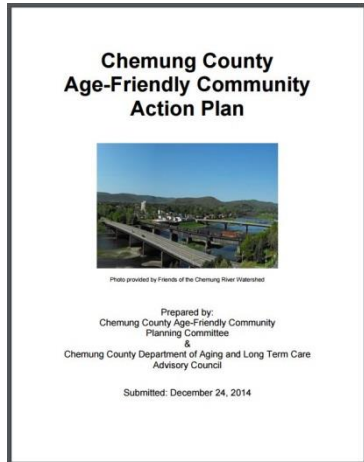
Including Dementia Friendly



Elements of An Action Plan

1. Statement of goals
2. Activities/action steps to reach goals
3. Target date for completion or schedule of beginning/ending of each activity
4. Name organizations/individuals responsible for each activity
5. Identify inputs/resources to complete tasks
6. Identify indicators to measure progress toward goals

Age-Friendly Action Plans are Living Documents



Your Action Plan is a Living Document
It is important to understand and develop your action plan as an "active" rather than static document. Continual revisions and amendments are a sign of program improvement and progress, not of failure.

Benefits of Livable Communities & Resources



Everybody Wants a Livable Community



Boomers and **Millennials** have similar preferences for walkable, mixed-use neighborhoods.

72%

54%

Want to be near shops, restaurants and offices

62%

49%

Would move into a smaller home for a shorter commute

42%

59%

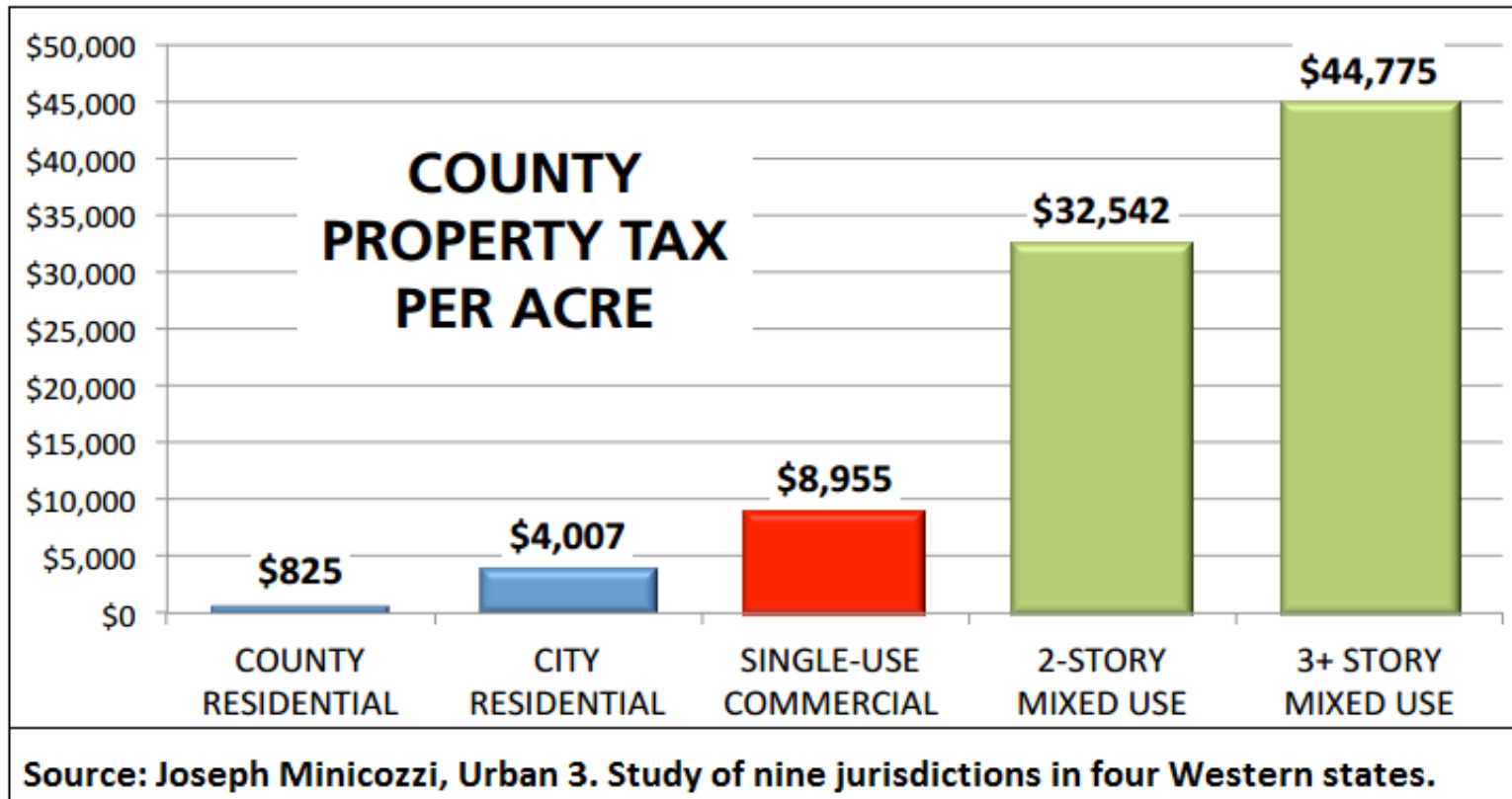
Prefer to live where there's a mix of homes

52%

55%

Want public transportation options

Mixed-use property in Livable Communities generates higher tax revenue per acre than single-use property



Livable Communities are Economic Boons



Increase Economic Activity



Save Money for Cities



Are a Funding Opportunity

AARP Age-Friendly Resources

- **Mini Grants** In the last year AARP has set aside funds for mini-grants for Age Friendly pilots and activities that support age friendly projects in the AARP Network.
- **Webinars**
- **Conferences**
- **TA** with applications and action plans
- **Online toolkits** and sample documents
- Private Facebook page
- **AARP Livability Index** - <http://bit.ly/1E1CiZg>
- And more resources being developed as the needs and opportunities arise.

Our Website and More!

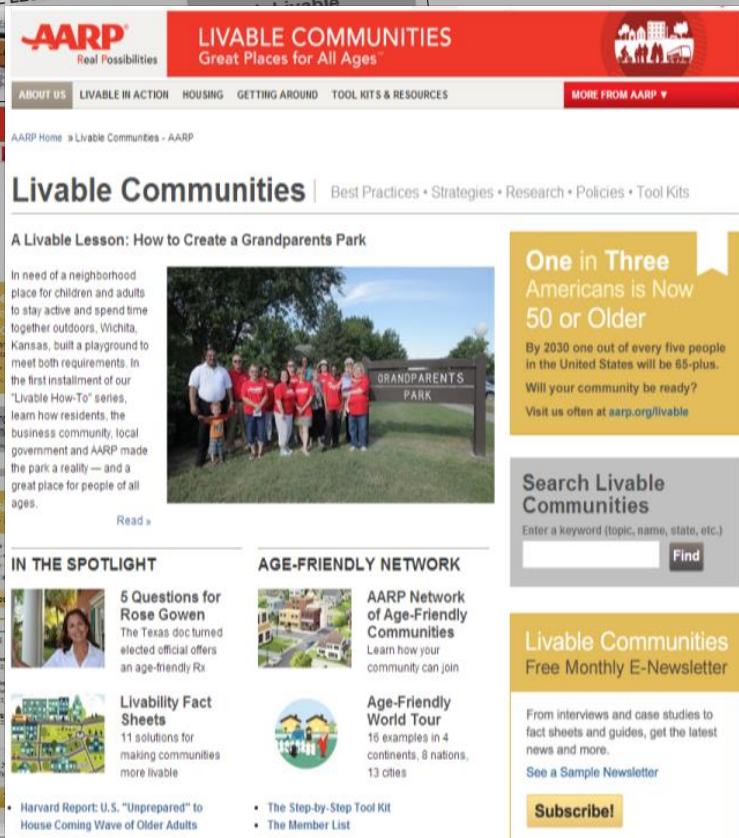
Please bookmark and promote

AARP.org/Livable

And keep these URLs handy, too

aarp.org/agefriendly *

aarp.org/livabilityindex



• Your direct link to the AARP Network of Age-Friendly Communities Tool Kit!

For More Information

Valerie Spain, AARP Age Friendly Lead

vspain@aarp.org

617-305-0566