

# **Executive Director's Report Mid-September through Early December 2019**

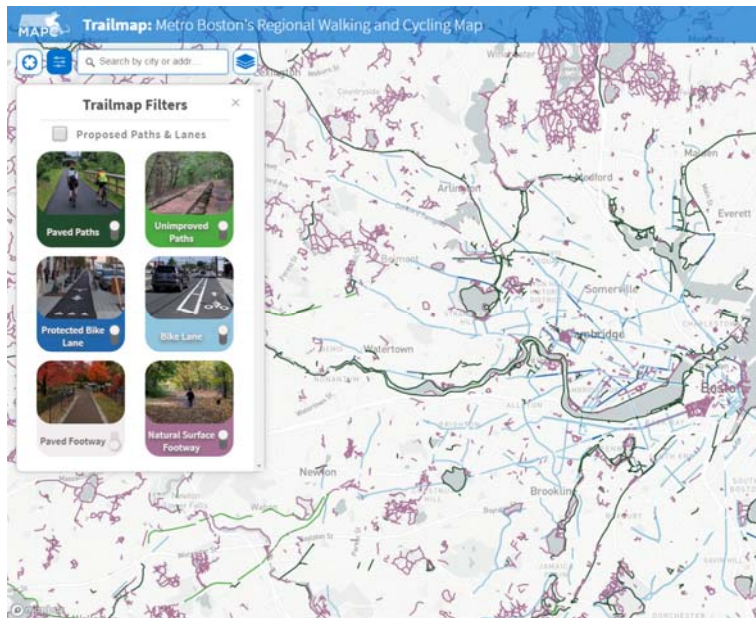
**Submitted to the Executive Committee  
by Executive Director Marc Draisen**

## ***Smart Growth Planning***

### **Transportation**

#### Trailmap

Transportation and Digital Services staff unveiled a newly designed and reconfigured Trailmap webpage. Trailmap provides a complete source of the location of bicycle and pedestrian facilities throughout the region. The new design emphasizes trails and bike lanes that are protected from traffic, which encourages the broadest set of users. The Trailmap has already increased engagement with a number of municipalities to highlight and encourage new infrastructure for these users.



#### Trip Generation and Development Review Focus Group

On November 19, MAPC hosted a focus group with transportation practitioners from four consulting firms. The intent of the focus group was to learn more about their experiences preparing trip generation analyses for proposed development projects, as well as their perspectives regarding the development review process and mitigation programs in Massachusetts. The focus group participants unanimously acknowledged that while the standard method for estimating trips for a development project (ITE Trip Generation) is universally higher than observed trips, it is the industry standard which also holds under public scrutiny. We also learned that conducting monitoring studies once a project is built and occupied are rare, adjustments for Transportation Demand Management (TDM) are not done quantitatively, and developers, in many cases, would prefer to contribute to a mitigation fund rather than commit to implement specific roadway projects as part of a mitigation program. Feedback on these topics will contribute to the Transportation Department's ongoing research in this space and MAPC's update to the regional plan, MetroCommon 2050.

### Moving Together Conference – Improving South Shore Transportation

On October 24, Travis Pollack moderated a session, Improving South Shore Transportation, at the Moving Together Conference. Alison Felix, Senior Transportation Planner/Emerging Technologies Specialist, and Michael Lambert, Administrator of the Brockton Area Transit Authority, co-presented on key findings and recommendations from *The Potential Impacts of Ride-Hailing on the Brockton Area Transit Authority*, a recently completed study that explored whether the growth in ride-hailing is having an impact on BAT ridership. The study concluded that a fundamental shift in individual mobility options is occurring, which is having some amount of impact on transit use. BAT, like other transit systems, is likely losing transit trips, but is not necessarily losing transit riders. Transit riders who use ride-hailing are likely substituting individual trips, but not shifting wholly away from transit. In sum, ride-hailing is one factor among many that are causing declining BAT ridership.



### Association of Metropolitan Planning Organizations Conference Presentation

On October 23, Senior Transportation Planner Travis Pollack presented at the Association of Metropolitan Planning Organizations (AMPO) annual conference in Baltimore as part of a session on “MPO Roles and Relevancy – Innovations in the Planning Process.” Travis presented MAPC’s work in creating an interagency working group with the Boston Region MPO and MassDOT to tackle community mobility and first/last mile problems. Since 2017, staff from MAPC, CTPS, and MassDOT have met quarterly to share ways to enhance community mobility, to consolidate information on available funding, and to break down silos in programs and practices. The working group has also created a slide deck to present to municipalities and others, illustrating Massachusetts best practices as well as information on technical assistance and funding opportunities, and recently assisted the Boston MPO in creating the new Community Connections Program that will help fund community mobility projects starting in 2021.

### West Station Area Transit Study

MAPC has kicked off the West Station Area Transit Study to evaluate land use and transportation options around the proposed West Station in Boston. MassDOT is scheduled to build the new commuter rail station and bus hub as part of the reconstruction of I-90 in Allston. The study will analyze different transit and land use scenarios to determine which alternatives, or combinations of

alternatives, would be most useful in meeting the transportation and land development goals for Boston and the region. A main objective of the study is to provide the public and private sectors with an evaluation of strategies that could best improve access to jobs, labor, housing, healthcare, and other major destinations under different potential development futures around West Station and the surrounding community. The study results will help municipal and state governments to plan ahead and implement regional mobility improvements as the Station and the realigned Allston I-90 interchange area emerge. To assist with this study, MAPC has retained the services of Renaissance Planning Group to develop a new accessibility model that will assist with the scenario analysis.

The first public meeting for the study was held on November 14 in Allston. Attendees learned about the study, provided input on desired outcomes for West Station, and brainstormed metrics to evaluate alternatives. The study is scheduled to be completed in late 2020. More information on the study can be found at [www.mapc.org/weststation](http://www.mapc.org/weststation).



## ***Land Use***

### *Equitable Transit Oriented Development (ETOD)*

#### Lincoln

On November 2, Lincoln held its annual State of the Town (SOTT), which was attended by over 200 residents. Members of the Select Board, Planning Board, and South Lincoln Planning and Implementation Committee (SLPIC) presented proposed zoning and design guidelines for South Lincoln, which MAPC drafted in close collaboration with the Town and SLPIC, and which Town Meeting will consider in the Spring. MAPC staff were present for discussion and questions after the SOTT. The Town and SLPIC, with support from MAPC, will host an open house in January to continue the discussion.

### *Master Planning*

#### Southborough Master Plan

On November 7, MAPC hosted a community visioning forum to support Southborough's anticipated update to their Master Plan. The forum included a presentation providing information about master plans and planning processes generally, as well as an overview of the goals and objectives defined by the 2008 Master Plan. During the evening's open house, attendees were invited to circulate among subject area stations – including topics such as housing, transportation, and open space – to review data and provide input on their preferences and priorities. MAPC is in the process of

developing a Visioning Report summarizing data collected through the visioning process and summarizing feedback received from the public.

### *Open Space and Recreation Planning (OSRP)*

#### Norwood

In November, the Massachusetts Division of Conservation Services conditionally approved Norwood's OSRP through November 2026. Conditional approval will allow Norwood to participate in grant rounds and receive grant awards. MAPC is now working in collaboration with Norwood to complete the requested edits to meet the required conditions for final approval from the state.

#### Walpole

On October 23, MAPC hosted an introductory public meeting for Walpole's OSRP. The public forum introduced residents to the planning process, shared collected data, and offered attendees the opportunity to ask questions and provide feedback on their priorities.

### *Corridor and Neighborhood Planning*

#### Salem's Bridge Street Neck Visioning

On September 23, MAPC staff facilitated a community visioning meeting for residents of Salem's Bridge Street Neck Neighborhood. Approximately 40 people attended and worked in small groups to draft vision statements, construct visual markups for the neighborhood, and craft neighborhood concept plans. MAPC will create an illustrative plan for Bridge Street Neck and submit a memo outlining the meeting, including recommendations based on the visioning process.

#### Nobscot Village Design Guidelines

Framingham City Council voted unanimously to approve the proposed Nobscot Village (B-4) Zoning. Following a rigorous community process and recommendations from the Planning Board and Subcommittee on Planning and Zoning, this rezoning is a key element in creating more flexibility and density for mixed-use development in this historic Village Center. The zoning changes should make development more feasible and are complemented by MAPC's work with Framingham to draft design guidelines for the [area](#). The Nobscot Village Design Guidelines were compiled with input from the Nobscot community regarding future redevelopment of the Village Center. The document includes design guidance primarily related to sites, buildings, and signs. MAPC completed the guidelines in June of 2018 and is pleased to see zoning adopted to encourage appropriate mixed-use investment in a Village Center. The city expects the first major project under the new zoning to move forward into permitting in the next few months.

### **Housing**

#### Salem Inclusionary Zoning

The work on Salem's inclusionary zoning is coming to an end, with a draft policy provided to the city and additional research to inform homeownership requirements complete. The city and MAPC are discussing whether the final requirement for affordable homeownership units will be at 60% or 80% of Area Median Income, as research has shown there is larger unmet need at the former income level, but also challenges with financial feasibility. Once finalized, MAPC will present the inclusionary zoning to a joint meeting of City Council and the Planning Board.

#### Lynn Housing Strategy

MAPC is working with Lynn to develop a housing strategy that will establish goals and guide development and policy over the next five years. On Saturday, November 16, the project team joined

other MAPC staff and city departments at a citywide summit that drew more than 100 residents. More than 40 people attended the morning workshop on housing, where discussion focused largely on rising housing costs and displacement concerns. We are now working to put together a steering committee so we can work with local stakeholders to prepare for a public forum on January 28.

#### Foxborough Housing Production Plan (HPP)

On September 23, Foxborough and MAPC organized a project kickoff day to begin work on the town's HPP. The day included an introductory meeting with the project working group, a town tour, and focus groups with various stakeholders. Staff from CHAPA, which will be working with Foxborough as part of its Municipal Engagement Initiative, also attended the day's activities.

On November 13, Foxborough hosted the first public forum for the HPP. MAPC staff presented preliminary findings from the Housing Needs Assessment, and town staff facilitated discussion that included reactions to the data, understanding the housing needs of a range of Foxborough households, and goals for housing in town. About 40 Foxborough residents attended, bringing a diverse range of perspectives on housing; a concurrent online open house has generated engagement from an additional 80 residents to date.

#### Arlington Fair Housing

MAPC has partnered with Diane Glauber at the Lawyers' Committee for Civil Rights Under Law to develop an Analysis of Impediments for Arlington. To date, the project team has undertaken significant demographic and housing analysis and developed a community outreach strategy to collect input from those most impacted by Fair Housing issues.

#### Cohasset Housing Production Plan (HPP)

For the past year, MAPC staff has been working with the Cohasset Housing Committee and town staff to develop an HPP. Cohasset's HPP builds off its master plan, adopted in June 2019, taking a deeper look at development constraints and strategies to address housing goals. On October 7, MAPC presented 7 priority strategies that will be highlighted in the HPP. Although attendance was light, those who attended were strongly supportive of the proposed strategies and participated in a robust discussion on moving the strategies forward. Next steps will include drafting the HPP and then working with the Housing Committee to the Planning Board and the Select Board for adoption.

#### Millis Housing Production Plan (HPP)

In June, the Millis Planning Board voted to adopt the HPP and on November 18, the Select Board followed suit. The plan outlines a number of strategies ranging from zoning updates to allow more diversity of housing types to building municipal capacity and advocacy for housing. Since the town only has 3.75% of its housing stock on the Subsidized Housing Inventory, the plan includes targets for incremental increases in its deed-restricted affordable housing stock.

### **Economic Development**

#### Comprehensive Economic Development Strategy (CEDS)

The Economic Development Working Group recently launched the design of the 5-year CEDS, in conjunction with the MetroCommon process. MAPC is charged with creating the CEDS for the MAPC region as a partner with the US Economic Development Administration. An Advisory Committee has been formed, made up of leaders from a range of sectors including small business development, business associations, workforce development organizations, public sector economic development practitioners, academia, and financial institutions. The committee will convene for its first meeting on December 12 and will provide guidance for the development of the strategy through May 2020.

Economic Development staff also met with other MARPA Economic Development staff to discuss best practices for the CEDS and working with EDA. Takeaways included strategies to incorporate Workforce Investment Boards in the CEDS, implementation initiatives with key stakeholders, and addressing barriers to moving projects forward, such as match commitment and capacity.

#### Essex Economic Development Initiative

MAPC staff facilitated a business roundtable to discuss how the town could better support and grow local businesses. Representatives from various business sectors and organizations, as well as the Essex Economic Development Committee, participated. Questions revolved around how Essex could improve its services/processes and whether there are opportunities to streamline certain processes or regulations. Key takeaways included improving the knowledge gap between town initiatives and businesses' perceptions, and improving transportation and housing options.

#### Franklin Economic Development Plan

MAPC facilitated a business roundtable to discuss how the town could better support and grow local businesses. Over 25 participants, from local olive oil retailers to Dean College, provided feedback to the economic development presentation. Items discussed included shared parking, promoting town venues and events, and downtown amenities for Dean College students and staff.

#### Norwell Economic Development Implementation Plan

MAPC hosted a successful community forum to begin the process of rezoning a shopping mall and industrial park. The event featured a presentation by the Norwell Board of Selectmen, South Shore Chamber of Commerce and MAPC and an open house workshop to evaluate design and density, intent of zoning regs, and key considerations to evaluate. The feedback from the forum will be used to inform the next steps of the planning process.

#### PRO Neighborhoods, Dorchester

MAPC staff completed the final report summarizing recommendations to advance equitable development in the Upham's Corner neighborhood of Dorchester. The recommendations arose through an 8-month process with Dorchester Bay Economic Development Corporation, The Corporation for Supportive Housing, Blue Hub Capital, Upham's Corner Main Streets, the City of Boston, and Boston Medical Center. This project represents a unique and coordinated effort by MAPC's Economic Development, Public Health, and Housing teams to focus on the greatest opportunities for capital deployment that would both mitigate the possible displacement of longtime residents and businesses and improve the health, wealth, and stability of the community at large through strategies targeting a multi-generational timeline.

#### Topsfield



MAPC hosted 160+ community members for downtown visioning regarding the Downtown Revitalization Plan. Engagements of public school students, parents, business owners, older residents, community leaders, and other stakeholders helped to generate the excellent turnout. Attendees provided feedback on the types of businesses, public amenities, housing, and community events they would like to see downtown. The 6<sup>th</sup>-grade class from the town's middle school attended the event and

facilitated discussions with other middle and elementary school students and shared their feedback. MAPC also facilitated an online survey with 114 responses and business roundtables with 24 participants. MAPC is developing recommendations with the goal of finalizing the plan by year's end.

## ***Environment***

### *Climate Convenings*

#### Natural Climate Solutions

On September 16, MAPC hosted a day-long interactive workshop led by Washington-based think tank [Earth Economics](#) on bringing green infrastructure to scale across the region. Building off of the [Metro Mayors Climate Smart Cities](#) initiative, over 40 municipal, state, and federal staff as well as non-profits and private sector participants learned in-depth green infrastructure finance, operations and maintenance, and cost-benefits while formulating a collective regional vision for implementing green infrastructure at scale. Read more at on our [MAPC Blog](#).

#### South Shore Climate Resilience Network

The September meeting of the South Shore Network featured presentations from Courtney Rocha, the newly hired MVP Coordinator for the Southeast Region, and Kristin Kelleher from the Climate Action Business Association (CABA). Courtney described her new role and provided details on the just-released MVP Planning and Action grants. Kristen shared the results of CABA's outreach to small business owners in Duxbury and Scituate. Participation in the network continues to grow with representation from 13 municipalities, including elected officials, managers/administrators, and a wide variety of local departments.

#### Silver Jackets

Silver Jackets are state teams across the United States that bring together state, federal, and local agencies to learn from one another about reducing flood risk and the impacts of other natural disasters. On September 11, Senior Regional Environmental Planner Anne Herbst presented MAPC's on-going work analyzing inland flooding and climate implications to the Massachusetts Silver Jackets. Participants included representatives from the U.S. Army Corps and Geological Survey, and a wide array of state agencies.

#### Newton-Needham Chamber of Commerce

Anne Herbst also presented MAPC's work on climate resilience to the Chamber's Environment Committee. MAPC prepared Newton's Climate Resilience and MVP Plan, and is working with Needham on its MVP certification. The Chamber is assisting with outreach to business partners.

### *Municipal Vulnerability Preparedness (MVP)*

In October and November, MAPC facilitated four MVP workshops for Bellingham/Franklin, Dover, Hamilton, and Norwell.

MAPC facilitated an MVP workshop in Norwell on November 7. Over 40 town and community leaders spent the day identifying climate vulnerabilities and developing strategies to address them. Top priorities include forest and tree management, improved emergency communications with older adults, water conservation measures, and updates to key infrastructure.



*Norwell MVP workshop participants hard at work*

On October 24, MAPC staff worked with Hamilton to facilitate an MVP workshop. Twenty-three attendees met at the Hamilton-Wenham Library to determine the town's strengths and vulnerabilities in the face of climate change, and to begin to establish adaptive priorities. Reliable electrical and cell phone service, improving water supply options, and flood prevention were the top priorities moving forward. Hamilton will hold its MVP Listening Session on December 5 at Town Hall. (See more about Hamilton's Hazard Mitigation Plan, below on p. 9.)

MAPC also facilitated an MVP Workshop for Dover on October 30. Over 40 attendees gathered at the Great Hall in the Dover Town House, representing town staff, board and commission members, and community representatives of schools, land trusts, and businesses. Tree and forest management and protection of local water supplies emerged as the top concerns of workshop participants.

On November 20, MAPC facilitated its first two-town MVP workshop for Bellingham and Franklin. The workshop attracted over 40 participants representing both towns' staff and board members as well as regional representatives such as the Tri-Town Vocational School and National Grid. MAPC is also preparing Hazard Mitigation Plans for the two towns, and the priority actions identified in the MVP workshop will be incorporated into those plans.

#### *Hazard Mitigation Plans (HMPs)*

MAPC facilitated the first public meeting for the Wayland Hazard Mitigation Plan on September 11. The meeting was attended by 21 members of the public, and several followed up with comments and questions regarding dams and flooding during the meeting, and afterwards by email.

On September 24, MAPC facilitated the final meeting of the Arlington Hazard Mitigation Team. The team developed their recommendations for mitigation measures to be included in the updated HMP. The final Public Meeting will be hosted by the Select Board on January 6.

On October 17, MAPC facilitated the second Gloucester public meeting for the city's Hazard Mitigation update.

FEMA has issued a notice of Approval Pending Adoption for the Hamilton Hazard Mitigation Plan, and the Board of Selectmen voted to adopt the plan on November 4. (See more about Hamilton's MVP, above on p. 8.)

#### MEPA Project Review

The projects listed below for the region were filed with the MEPA office and were ranked by MAPC for the level of review. The MAPC review categories are defined as follows:



- A Major regional project to be reviewed by the Officers and/or Executive Committee
- B Regional project to be reviewed by staff and approved by Executive Director
- C Local or regional project to be tracked by MAPC; no MEPA review needed

Summary of MEPA Projects reviewed and ranked by MAPC, August/September/October 2019:

MEPA#	PROJECT	COMMUNITY	MEPA STATUS	MAPC REVIEW
16092	27 Proctor Street Seawall	Manchester By The Sea	ENF	C
16095	Platinum Park	Milford	ENF	C
16097	Waltham High School	Waltham	ENF	C
16086	Main St. Traffic Signal and Intersection Improvement Project	Hopkinton	ENF	C
16087	New View Addiction Rehabilitation & Education Center	Salem	ENF	C
16088	Aquaculture Project	Ipswich	ENF	C
15711	Reservoir Storage and Fish Passage Improvement Project	Scituate	Draft EIR	C
15923	The Vale	Woburn	Final EIR	C
16011	Parcel 12	Boston	Single EIR	C
16044	Proposed Mixed Use Redevelopment	Lynn	Draft EIR	B
3247	Logan International Airport 2017 Environmental Status and Planning Report	Boston	ESPR	B
15624	The Enclave (Formerly Regency)	Boxborough	NPC	C
16110	65 Norman Street	Everett	ENF	C
16111	River Ridge	Foxborough	ENF	C
16113	Kennedy Senior Center Improvements	Quincy	ENF	C
16114	1141 Revere Beach Parkway	Revere	ENF	C
16116	Route 1A Recreation Facility	Walpole	ENF	C
16090	The Green District	Marlborough	ENF	C
16100	Sunset Bay Marina	Hull	ENF	C
16103	Expansion of Crouch Cemetery	Marshfield	ENF	C
16106	Former Beverly MGP Site	Beverly	ENF	C
16032	Hanover Crossing	Hanover	SEIR	C
15547	5 and 15 Necco Street	Boston	NPC	C
15711	Reservoir Dam Storage and Fish Passage Improvement Project	Scituate	DEIR	C

MAPC submitted one MEPA comment letter during this reporting period:

Proposed Multi-Family Mixed-Use Redevelopment in Lynn

This project, located at 800-810 Lynnway in Lynn, proposes to construct a mixed-use, multi-family apartment development comprising 4 buildings with 550 units and 11,620 square feet of retail

space. An estimated 3,434 weekday daily trips and 2,336 Saturday daily trips are forecast to be generated. The project proposes to include 866 parking spaces. MAPC’s comment letter addressing the Draft Environmental Impact Report (DEPR) outlined concerns pertaining to parking, coordination and connectivity with nearby projects, monitoring, mitigation, and affordable housing. The comment letter is on MAPC’s MEPA comment letter website here: <https://www.mapc.org/our-work/expertise/environment/mepa-review/>.

## ***Public Health***

### **MAGIC Healthy Aging Healthy Living Plan**

On November 7, Public Health Department staff presented to MAGIC the draft findings and strategies of the MAGIC regional Healthy Aging Healthy Living Plan. The Plan focuses on two pressing issues, housing and transportation. The Plan presents regional and municipal strategies, including expanding housing choice and affordability; improving access to home maintenance and modification resources; expanding public transit access and connectivity; and promoting older adults in Complete Streets planning and implementation. A January forum (date forthcoming) will bring the results of the Plan to the broader age-friendly network in MAGIC.

### **Health and Housing**

On October 28, Jeanette Pantoja, Public Health Planner II, spoke at the Next Level Housing Solutions Discussion Series event on “Aligning Leaders and Solutions across Sectors.” Jeanette presented on an innovative and collaborative housing initiative funded by Boston Medical Center, Children’s Hospital, and Brigham and Women’s Hospital. With a combined investment of almost \$3 million, the Innovative Stable Housing Initiative (ISHI) represents the first time local hospitals have teamed up to address housing instability among Boston families. Boston Medical Center (BMC) launched ISHI as part of a broader housing effort, which includes partnerships with affordable housing providers in the neighborhoods served by BMC. The MAPC Public Health team has been supporting these efforts through its role as lead evaluator for Boston Medical Center’s housing initiatives.

### **Active Transportation**

In collaboration with Watertown, the Public Health team has continued to deploy and test ways to measure pedestrian and bicycle trips over time. The purpose of the work is to establish baseline levels of walking and biking using annualized trip measures (e.g., average annual pedestrian trips) and MAPC’s local access scores (LAS). The project in Watertown is collecting pedestrian and bicycle volumes on a sample set of roadways (and one shared-use path) to estimate current walking and biking trips prior to the addition and extension of several new facilities. In addition to creating a baseline measure, the data will also feed directly in the town’s current bicycle and pedestrian master plan and assist with investment decisions about potential new bicycle and pedestrian facilities.

## ***Arts and Culture***

### **Malden Creative Placemaking**

On Saturday, September 28, “Cruise in a Canoe” took place along the Malden River. Mayor Gary Christenson and several city councilors attended. Participants were



invited to tour an outdoor exhibit produced by the MAPC Arts and Culture Team, take a ride in a canoe, paint a sign designed by the Greater Malden Asian American Community Coalition, and learn about water quality from Friends of the Malden River and the Mystic River Watershed Association.

### **Medfield Creative Placemaking**

The Medfield Creative Placemaking Project is a collaboration between the Town, the Cultural Alliance of Medfield (CAM), and MAPC to ensure that the arts and cultural programming remains at the center of the future redevelopment of the campus of the former Medfield State Hospital (MSH).

A publicly staged reading of *The Medfield Anthology*, an original site-informed “walking play” scripted, choreographed, and directed by MAPC Artist-in-Residence Hortense Gerardo, drew over 85 people to the Medfield State Hospital (MSH) on October 12. Performers included actors from the local theater group, the Gazebo Players, dancers from Boston Dance Theater, as well as a former resident of MSH. The play, which will be finalized for production next May, is meant to inform ongoing rezoning and reuse efforts on the site.

### **Municipal Capacity Study**

In September, MAPC, along with several project partners – including RPAs, state agencies, and private creative organizations – announced a six-month collaborative study exploring arts and cultural staff capacity in municipalities across the state, recognizing that cities and towns have been working to grow their arts and cultural sectors and have invested in staff to achieve that goal.

The study, a collaboration of the Arts & Culture and Municipal Collaboration Departments, aims to understand the functions and responsibilities of municipal personnel pertaining to public art, creative placemaking, urban design, and historic preservation; to learn how such positions are funded and managed; to understand the challenges arts and culture staff face in pursuing their aims; and to identify and explore ways and means to build municipal arts and culture capacity.

Over 40 municipal, regional, and state agency staff attended the project kickoff on November 6, providing input on the kinds of information they would like the study to gather. In early December, MAPC will be releasing a survey to kick off the study. If you are aware of a municipal staff person who holds responsibilities in these arenas and who should be invited to participate, please send their contact information to Jenn Erickson at [jerickson@mapc.org](mailto:jerickson@mapc.org) or Mark Fine at [mfine@mapc.org](mailto:mfine@mapc.org).

### **Essex County Community Foundation (ECCF) Arts & Culture Summit**



Arts & Culture staff represented MAPC at the second annual ECCF Arts & Culture Summit held in Beverly on September 27. The Summit highlighted the work supported by the ECCF Creative County Initiative. Examples of works created through their Creative Placemaking grant program were showcased on stage in the Cabot Theatre and outside the Dane Street Church. For example, the Beyond Walls’ PATIO parklet, shown in the photo, supported the Downtown Lynn Cultural District in sharing information about the MAPC Lynn Creative Placemaking project and forthcoming Call for Artists.

## **Watertown Public Arts Master Plan**

On October 30, MAPC, Watertown’s Department of Community Development and Planning, and the resident-led Watertown Public Arts and Culture Committee (WPACC) co-hosted the first of two public workshops on the Watertown Public Arts Master Plan. The workshop drew 75 attendees who participated in hands-on activities, facilitated dialogue, and creative brainstorming sessions about the future of public art in Watertown. The evening kicked off with a presentation by representatives from the sponsoring organizations, as well as a series of informal talks by local artists. Participants then joined breakout discussions and activities, including a creative mapping exercise in which participants shared personal memories of significant places in town, and a facilitated discussion designed to build consensus around core values for public arts in Watertown. A second public workshop will take place in January, when attendees will weigh in on MAPC’s recommendations for potential management structures and funding sources for Watertown’s public arts program.

## **Climate Perspectives Video-lettes**

The Climate Perspectives Project uses visual storytelling to share stories from conversations with workers across fishing, farming, construction, and home healthcare about the effects of climate change on their industries. MAPC Artist-in-Residence (AIR) Hortense Gerardo and filmmaker Monica Cohen of BOOM House filmed David Dumaresq (aka “Farmer Dave”) and Fisherman/Entrepreneur Jamie Bassett in their respective work environments to create two “video-lettes.” These short films describe the particular occupational challenges posed by fluctuations in weather patterns and the creative solutions and innovations that are being developed to address the demands of a changing environment. The video-lettes will be incorporated as part of a larger art installation entitled, *Schools of Thought on Climate Change: Notes from the Field*, conceived and created by both Hortense and former AIR Carolyn Lewenberg. The art installation has been featured around the region and will have its final showing at the MetroCommon Climate Forum on December 11. The video-lettes will continue to reside on the Climate Perspectives page of the MAPC website.

## ***Strategic Initiatives***

### **MetroCommon 2050**

We are in Phase 2 of the planning process, where we are identifying the major challenges and opportunities facing the region over the next 30 years, and how these challenges and opportunities will affect the region’s ability to achieve the Goals and Sub-Goals the Executive Committee adopted provisionally last June. The plan is organized by the five Action Areas (Climate Mitigation and Resiliency; Dynamic and Representative Governance; Equity of Wealth and Health; Homes for All; and Inclusive Growth and Mobility). We are building PowerPoints, which we call Action Area Briefs, to frame each Action Area and lay out major challenges and opportunities to spark public discussion. We have also begun the process of dividing the Action Areas into topical areas for the development of draft policy recommendations, and [add more on scenarios here] A robust research agenda continues to move forward, with research results being released to the public as they are completed, and additional topics still under study. More detail on these and other MetroCommon activities follows:

#### External Advisory Committee (EAC) Meeting

The MetroCommon2050 EAC met on November 21. Staff presented the first “Action Area Brief” on Climate Mitigation and Resilience. MAPC intends to develop five such briefs, one for each of the five Action Areas. Each brief will be in the form of a PowerPoint, setting basic parameters for discussing

each Action Area with the public. The EAC also learned about the process of developing policy recommendation to vet with the public, and the four scenarios that will be modeled as part of the planning process (see paragraphs below). Breakout discussions gave EAC members an opportunity for input on both the Action Area Briefs and the scenarios. The EAC will meet again on January 30.

#### Getting a Head Start on Policy Recommendations

In an effort to jump-start the process of developing policy recommendations, which will be a critical element of the MetroCommon2050 regional plan, we assigned Government Affairs Director Lizzi Weyant to develop a “table of contents” of subjects in which policy recommendations can be organized; to recommend the assignment of staff and external partners or consultants to draft policy recommendations under each topic area; and to draft a common template for how all chapters of policy recommendations will be structured. Lizzi has provided a draft reply to these requests, and that draft is now under review.

#### Advancing the Scenario Modeling Element of the Planning Process

In considering how to face the region’s long-term challenges, we must keep in mind that forces beyond our control (we call them “driving forces”) could either help or hinder our ability to meet the MetroCommon Goals. It is hard to anticipate how much these forces might change, how quickly, or in what direction. This matters because policies tailored to address today’s needs might not work in the same way, or have the same consequences, intended or not, under different conditions.

Over the last few months, under the leadership of Socioeconomic Analyst II Sarah Philbrick, MAPC has worked to identify critical a set of driving forces that are likely to have a profound impact on the region’s future. After considerable debate, we chose to look closely at three, and to see how they might interact with each other: technology, climate, and federal policy.

We combined these forces in different ways, creating four “scenarios” that paint pictures of what the region might look like in 2050. We will model each of these scenarios to assess the likely impact of various policies, thereby helping us to develop policy recommendations that can succeed in various widely-differing futures.

The four (draft) scenarios presented to the EAC were:

- *Just Getting by—Together*: catastrophic climate change, large and effective federal government, big technology leap forward
- *Figuring it Out*: expected climate change, large and effective federal government, technology inches forward
- *Pockets of Privilege*: catastrophic climate change, small hands-off federal government, big technology leap forward
- *More Today Tomorrow* (“base case”): expected climate change, stalemate government, technology inches forward

#### MetroCommon Speaker Series: “Future of Mobility” and “Climate Equity”

As the second guest of the MetroCommon Speaker Series, David Zipper, Visiting Fellow at the Taubman Center for State and Local Government at Harvard’s Kennedy School, spoke about the effect of rapidly changing technology on the future of mobility to a standing-room-only house of nearly 200 people at the Colonnade Hotel in downtown Boston on November 6. We followed his address with a panel of local transportation experts and question/comments from the audience. At the event, the MAPC Data Service team unveiled research findings from the cities and towns participating in the LimeBike dockless bikeshare system, mainly north and west of Boston (for more details about this research, see p. 23). The next event in the Speaker Series will feature three experts who will address climate equity at MAPC’s annual Clean Energy Forum, which will take place

at 9 AM, December 11 at District Hall in South Boston (for more info, see [https://www.mapc.org/planning101/event/9674/?instance\\_id=1508](https://www.mapc.org/planning101/event/9674/?instance_id=1508)).

## **Community Engagement**

### Quincy Small Business Outreach

Community Engagement Specialist Iolando Spinola and Economic Development Planner Jennifer Kaplan collaborated on connecting with small businesses in Quincy to share a key survey that will impact a small business study that MAPC is conducting. On October 31 and November 1, business owners in Quincy shared key insights and feedback for the city on the survey and in conversation with Iolando and Jenn. David Zou, a board member at Quincy Asian Resources, Inc., supported MAPC in connecting with Asian-owned businesses in the city. Iolando and Jenn are returning to Quincy for further outreach in early December.

### Lynn City Summit

The Lynn City Summit was held on Saturday, November 16. On a very short timeline, Community Engagement Specialist Carolina Prieto managed planning for the summit, which was a high priority of Lynn Mayor Thomas McGee. The purpose of the summit was to bring community members, advocates, city departments, non-profits, and residents together for a fruitful discussion on the most pressing issues facing Lynn today.



Over 240 participated in the 5-hour event, which featured morning workshops on housing, economic development, transportation, education, arts and culture, and public health and safety. Over lunch, the participants heard key takeaways from the morning breakout sessions. In the afternoon, participants attended a community resource fair, which offered a deeper dive into projects and programs the presenters offered. This gave people an opportunity to connect one-on-one with city departments and organizations working to improve and enhance community development in the city.

## **Subregions**

### **Inner Core Committee (ICC)**

The ICC met on November 20 to discuss multifamily housing in the Commonwealth and displacement concerns in the Inner Core. Amy Dain, public policy analyst, shared findings from her research on where zoning allows multifamily housing development, at what densities, and through what kind of permitting processes. MAPC's Research Division shared new work on understanding displacement, including displacement associated with gentrification and turnover at the household and community levels. Discussion included a potential ICC project to study the impacts of new residential development on the costs of surrounding housing stock. Chelsea will be sponsoring a TAP application on behalf of the subregion in 2020. Staff for the MPO shared news about the TIP and there was also discussion of Census 2020.

## **MetroWest Regional Collaborative (MWRC)**

MetroWest spent the fall with a series of meetings focused on the long term future of the subregion. Our September meeting focused on rail with discussion of the MBTA Rail Vision report, which was not yet final at the time of the presentation, led by MBTA staff; and the West Station Study, led by Travis Pollack of MAPC. MetroWest heard a presentation from the Census Bureau during our October meeting and discussed ways that we can support a complete count in each of our communities. The November meeting focused on planning for the future with discussions with the MPO about the updated TIP project selection criteria and with Emily Torres-Cullinane of MAPC to discuss progress on MetroCommon2050. Our next meeting will be January 23 at, 8 AM, at Wellesley Town Hall.

## **Minuteman Advisory Group on Interlocal Coordination (MAGIC)**

Lizzie Grobbel, Regional Planner II, began as MAGIC's new subregional coordinator in September. At the November 7 meeting, the group re-elected its officers (Chair Adam Duchesneau from Sudbury; Vice Co-chairs Kristina Johnson from Hudson and Margot Fleischman from Bedford). Assistant Director of Public Health Heidi Stucker presented an update on MAGIC's Healthy Aging Healthy Living Plan (see more information on p. 10 of this report). Strategic Initiatives staff presented an update on the MetroCommon2050 planning process. The group had an interactive discussion on MetroCommon goals related to climate change. They also discussed climate actions that require multi-municipal or state collaboration.

MAGIC's "Making the Connections" micro-transit pilot is hiring a part-time program manager. A Request for Services was posted by Sudbury to the MMA website, the Sudbury Town website, and on the MassPlanners List Serve. Applications are due by December 16. The Inter-municipal Agreement for the pilot now includes Acton, Bolton, Carlisle, Concord, Stow, Lincoln, and Weston.

Acton is now the new MAGIC representative on the Boston MPO, which held elections at MAPC's Fall Council Meeting on November 6.

MAGIC will begin discussing other regional topics of interest during its next meeting on January 9, 2:30-4:30 PM at the Concord Town Offices, 141 Keyes Road, Concord.

## **North Suburban Planning Council (NSPC)**

In October, Marcia Marques from the US Census assisted NSPC communities in their preparation for the upcoming 2020 Census. Stoneham recently formed a Complete Count Committee and shared their experience with the group. Sandy Johnson and Matt Genova from the Boston MPO presented on the UPWP and TIP programs at the November NSPC meeting. Brian Szekely, Winchester Town Planner, and Tina Cassidy, Woburn Planning Board and Woburn Redevelopment Authority Director will attend the MPO meeting on December 19 to discuss NSPC's goals and priorities.

NSPC will receive an update on MetroCommon 2050 and discuss affordable housing messaging strategies at their next meeting in Burlington on December 12.

## **North Shore Task Force**

In November, the NSTF met at the Danvers Library for an overview of MAPC's Municipal Collaboration Program. Procurement Services Manager Marjorie Weinberger highlighted new procurement opportunities for North Shore communities. In addition, MAPC Transportation Planner Kasia Hart gave an update on the Transportation Climate Initiative and the Regional Bike Share Program. The NSTF will not meet in December.

Long-time Subregional Coordinator Sam Cleaves announced he is leaving MAPC after 19 years to pursue new opportunities and challenges. I have never even known a North Shore Coordinator other than Sam! Please join me in wishing Sam well and thanking him for his service to MAPC, and particularly to his beloved North Shore.

### **South Shore Coalition**

The South Shore Coalition has identified water and waste water infrastructure challenges as a primary topic of regional discussion and collaboration. The Norwell Economic Development Growth Plan as well as the concurrent Master Planning processes in Hingham, Norwell and Rockland, will serve as excellent opportunities to explore challenges and solutions. In lieu of the December meeting, there will be a holiday gathering at the Paragon in Hull on December 6.

### **SouthWest Advisory Planning Committee (SWAP)**

SWAP met on November 12 in Wrentham. Staff from the Boston MPO shared updates on the TIP and UPWP, and Amy Dain facilitated a conversation with subregional members about barriers to multifamily housing production. SWAP's next meeting will be on December 10 in Bellingham, and will focus on stormwater management.

## ***Clean Energy***

### **Wayland Clean Energy Resilience Ribbon Cutting**



On September 17, MAPC was proud to gather with representatives from the Town of Wayland, Ameresco, DOER, as well as Senator Becca Rausch and Representative Carmine Gentile at the ribbon cutting for the smart inverter connected to the solar parking canopies at the middle school. The event celebrated the culmination of a five-year undertaking to improve clean energy access, energy resilience, and greenhouse gas (GHG) emissions at the school, which doubles as a regional and community emergency shelter. The ability to operate solar arrays when the power is out is surprisingly rare around the state, as most

solar installations are not designed to send power directly to the site. As climate change increases the frequency and severity of storms and periods of extreme temperatures – and the power outages associated with them – the ability to operate when the power grid is down will be critical in order to allow renewable electricity technologies to improve community resilience and reduce GHG.

In 2014, MAPC applied for a Community Clean Energy Resiliency Initiative (CCERI) grant from DOER on behalf of Wayland. The MAPC-Wayland application was one of 13 projects accepted to receive round-two implementation funding. At the time, the 270 kW solar canopy was in the process of being designed and built (as enabled via an earlier MAPC collective procurement for energy management services). Wayland used the CCERI grant to install a smart inverter on the solar system that will both have islanding capability and advanced switching on-site, enabling it to offset the diesel generator and extend the duration of emergency power available. For MAPC's blog post on the event, see [here](#).



## Multifamily Affordable Housing Passive House Tour

On October 2, National Energy Efficiency Day, MAPC hosted a tour for municipal stakeholders of Concord Highlands, an under-construction multi-family Passive House in Cambridge, in conjunction with Homeowners' Rehab, ICON Architecture, and NEI General Contracting. The development features six stories and 98 units of 100% affordable housing. Buildings often account for at least half of a community's greenhouse gas emissions. High-performance buildings are a foundational component of a net zero community, and Passive House standards provide an affordable path to a healthy, high-efficiency, low-carbon building stock. For MAPC's blog post on Energy Efficiency Day, read more [here](#).



## MAPC Kicks Off EV Charging Station Site Suitability Analysis in Beverly

On September 14, MAPC participated in Beverly's EV and Sustainability Fair hosted by Green Beverly and city staff. At the event, MAPC staff engaged attendees on where they would like to see EV charging stations located in their community. MAPC is working with Beverly to develop and pilot a new methodology of analyzing suitable sites across the city (both publicly and privately owned). The analysis and final report developed this fall will include policy recommendations for the City to accelerate and support the installation of EV charging stations. The methodology developed as a part of this project will provide a template for future analysis in communities across the region.

## Multi-Town Gas Leaks Initiative

In September and October, after more than a year of preparation and coordination, MAPC staff worked to convene municipal leaders from 20 communities to meet with National Grid to discuss opportunities for communities and the utility to work together to improve the safety of the natural distribution system and reduce emissions from gas leaks.

MAPC has played an important role in coordinating and convening this work. We relied on the dedicated collaboration and guidance of partners from Acton, Arlington, Boston, Brookline, and Wellesley as well as the Home Energy Efficiency Team and Mothers Out Front. Building on the themes that emerged at October's meeting, MAPC and its partners will continue to convene discussions around topics including ways to share data with municipalities about the scope of gas leaks and National Grid's plans to eliminate them; municipal best practices to coordinate road work and gas system repairs with National Grid; and exploring ways to use Grant of Location hearings and other means to communicate effectively with municipalities and the public about gas leaks.

## MAPC Hosts Greenhouse Gas Inventory Training; Shares Two New Resources

On November 8, MAPC and our consultant, DNV GL, hosted a training on how to collect data and complete a communitywide GHG inventory for staff and volunteers from Arlington, Melrose, and Natick, the three communities with which we are leading net zero planning efforts. At the training, MAPC and DNV GL shared two new resources that were developed over the summer and fall of 2019. These included a *Step-by-Step Guide to Greenhouse Gas Inventories for Massachusetts Cities and Towns* and a *Community Greenhouse Gas Inventory Tool*. MAPC will be working with the three communities to complete their individual greenhouse gas inventories and collect user feedback on both of the new resources. MAPC's goal with this work is to reduce the effort and resources required for municipalities to establish a robust communitywide GHG inventory to inform their local climate

action planning. The final versions of both resources are expected to be publicly launched in February 2020.

### **MAPC Testimony at International Code Council Hearings**

Since early 2018, the Clean Energy Department and various partner organizations have been working to educate and encourage Massachusetts cities and towns to register and vote on the 2021 International Energy Conservation Code (IECC). The IECC forms the basis for the building energy code in Massachusetts. At the beginning of the process, our collective goal was to increase the number of voters nationwide by 400. Through the coalition's efforts, Massachusetts alone validated 520 voters who are eligible to vote this November 18 to December 6.

October 26 and 27, MAPC's Nicole Sanches testified at the International Code Council's Public Comment hearings in Las Vegas to voice the interest of the Greater Boston region in a more energy-efficient code. The result of the hearings determined the final version of the commercial and residential energy proposals included in the Online Governmental Consensus Vote (OGCV). Nicole testified for several code proposals that would improve the energy efficiency of the code. The testimony was streamed to ICC members and recorded for participants in the OGCV. More on MAPC's efforts on building codes and resources to advance a more efficient IECC can be found [here](#).

## ***Data Services***

### **First Miles: Examining 18 Months of Dockless Bikeshare in Metro Boston**

On November 6, MAPC released *First Miles*, our interactive report summarizing our analysis of over 300,000 trips taken over an 18-month period using the Lime dockless bikeshare system operating in 15 Metro Boston cities and towns. The report draws on detailed GPS data produced by each bike, which allowed MAPC to map the start, end, and route of each trip. Not only does the analysis reveal patterns about the usage of the dockless bike system, but it also provides insight on bicycle infrastructure needs more generally. Our analysis showed that 18% of miles traveled by Lime riders were along busy roadways lacking safe bicycle infrastructure. Our map of these routes shows where such "very high stress" roadways are seeing high levels of use by Lime riders and, by extension, other bicyclists. This information can help municipalities to target new bike infrastructure where it is most needed to provide safety for bicyclists. To read the report, visit [mapc.ma/firstmiles](http://mapc.ma/firstmiles).

### **MAPC Calendar Reboot**

MAPC has produced a wall calendar each year for more than two decades, featuring a different map or data visualization for each month. We mail that out to thousands of recipients and are gratified to see it hanging on the walls of city and town halls, state agency buildings, and our community partner offices. After reflecting on the time, cost, and effort associated with the calendar production each year, we have decided to take a different approach for 2020. The MAPC Calendar "reboot" will comprise a much simpler one-sheet paper calendar combined with maps and data visualizations released online on the first of each month, in a new gallery to be part of the MetroBoston DataCommon. Through our social media channels, we will engage our audience in quizzes or contests designed to draw attention to the online maps or to solicit ideas for future months. This approach will retain the physical product that will provide year-round MAPC branding in offices, while enabling more nimble, interactive, and of-the-minute content development. Design of the poster calendar, due to be mailed in mid-December, is well underway, and Data Services has begun developing content for the monthly maps to launch on January 1.

## **Boston University Urban Greenhouse Gas Workshop**

In October, Senior Land Use and Transportation Analyst Conor Gately facilitated a panel on “Addressing City Data Pain Points – Transportation” at Boston University’s CO<sub>2</sub> Urban Synthesis and Analysis workshop. Panelists discussed data challenges and opportunities in the context of understanding and predicting transportation behavior and emissions on urban and regional scales. Workshop attendees included academic researchers from across the US, staff from the Urban Sustainability Directors’ Network and the Global Covenant of Mayors, and federal officials from NASA, NOAA, and NIST. Gately also presented on his work developing a national inventory of fossil fuel CO<sub>2</sub> emissions, part of which was featured in a New York Times data visualization: [nytimes.com/interactive/2019/10/10/climate/driving-emissions-map.html](https://www.nytimes.com/interactive/2019/10/10/climate/driving-emissions-map.html)

## **Census 2020**

Data Services continues its work with Government Affairs preparing for Census 2020. In November, the team worked to arrange presentations by Census Bureau Partnership Specialists at subregional meetings for interested coordinators. We have also fielded data inquiries about the local impact of Census funding and examined need for Census support across the region by analyzing data on lower response rates. The team has also had conversations with representatives from Marlborough, Peabody, Gloucester, and Randolph about their Census efforts through grants from the Census Equity Fund. In the next month, we will reach out to representatives at five more municipalities and then begin to develop materials in response to these conversations.

MAPC is also engaging in the conversation around Differential Privacy, the Census Bureau’s proposed new method for ensuring confidentiality of Census respondents in the age of Big Data. The new method provides higher levels of certainty that individual responses will be protected, but also comes at a substantial cost to accuracy of the core decennial census data releases. Over the coming weeks, MAPC will be analyzing sample files released by the Census Bureau, preparing comments to the Census Bureau, and encouraging other regional agencies to weigh in.

## **Statewide Demographic Scenarios**

In October, Data Services concluded an 8-month effort to create statewide demographic scenarios. The primary use of these scenarios will be in EOEEA’s 80x50 Carbon Reduction Plan. Data Services worked with stakeholders at EOEEA to create alternative scenarios that include changes in migration to and from the region, as well as changes in birth and death rates for the region. MAPC worked with the U-Mass Donahue Institute to create population scenarios from these assumptions, which led to detailed labor force, household, and employment scenarios for each RPA in the state.

## ***Municipal Collaboration***

### **Municipal Services**

The Municipal Services team (led by Director Mark Fine), with support from Principal Planner Ralph Willmer in the Land Use Department, completed a review of Lynn’s planning services with the aim of helping the city to enhance its planning capacity so it can capitalize on opportunities to attract new economic investment. This was considered a priority of Lynn Mayor Tom McGee, particularly given that Lynn is the largest municipality in Massachusetts without a certified planner on its payroll.

MAPC's review found several challenges facing Lynn in effectively managing development and planning for its future, including that:

- there is no central department responsible for all the functions of a contemporary planning and development agency;
- planning functions are dispersed throughout city and non-city departments and agencies;
- the city has no Master Plan;
- transportation planning and coordination was particularly lacking;
- zoning has not been reviewed comprehensively in years; and
- capacity for community engagement is very limited.

MAPC presented its findings to Mayor McGee and other senior officials at a series of meetings and at two hearings before the City Council, recommending that, in the near-term, the city obtain funding to hire two planners for a 3-year commitment within the Mayor's office to support planning and development initiatives in the City. Based on MAPC's recommendations, the Mayor was able to secure more than \$600,000 in resources from public and private partners to finance these two positions. MAPC subsequently helped the city to develop job descriptions and postings for the two certified planners: one a director-level planner to lead on cross-cutting initiatives and set long-range objectives; and the second focused on site plan review, zoning changes, and transportation planning and coordination. The city hopes to make these hires before the new year.

MAPC also recommended long-term reforms that Lynn could adopt to create a central Planning and Community Development Department, which would require special legislation/charter changes to implement. MAPC hopes to work with Lynn to implement these longer-term reforms soon.

### **Collective Purchasing**

The Municipal Collaboration Procurement Division has been meeting with our MetroWest Regional Services Consortium and South Shore Regional Services Consortium to assess current and future public works services contracts. The items and services we have on contract for our consortia range from roadway management services to catch basin cleaning to liquid de-icer (chloride based, beet juice, or beyond!). We're always looking for opportunities to expand the services we provide to the communities and are considering adding another purchasing consortium elsewhere in the region.

### **Statewide Homeland Security Fiduciary**

Through a competitive process, EOPSS has once again selected MAPC as the Statewide Fiduciary Agent for the FFY 2019 State Homeland Security Program, with grant funding totaling \$5.6 million. Under this contract, MAPC will provide management and administrative services to the Central, Northeast, Southeast, and Western Homeland Security Planning Regions and their associated Advisory Councils. We will continue to partner with the Central Massachusetts Regional Planning Commission, Southeastern Regional Planning and Economic Development District, and the Franklin Regional Council of Governments in this work. MAPC staff look forward to continuing our work with EOPSS and the Homeland Security Regions to enhance emergency preparedness.

### **Northeast Homeland Security Regional Advisory Council (NERAC)**

On September 10, NERAC funded a tabletop exercise that tested several communities in a simulated response to a gas pipeline explosion at a transfer station adjacent to the Hamilton/Wenham MBTA Commuter Rail Station. Over 60 local first responders, town administrators, and representatives from various state agencies participated. The discussion-based exercise enabled participants to

coordinate response plans relating to establishment of a perimeter, simulate assembly of a unified command structure across disciplines and municipalities, and plan for the distribution of accurate and timely information to the general public. NERAC recognized that after the 2018 Merrimack Valley Gas Explosions more emphasis should be placed on multijurisdictional and multiagency cooperation during large-scale emergencies, and also on coordination with private stakeholders like utilities.

NERAC also held an offering of the Active Attack Integrated Response (AAIR) Train-the-Trainer course on September 23–27 in Marblehead, which taught 26 police officers and firefighters/EMTs how to lead their own active shooter trainings. This cadre of local instructors, now certified by the ALERRT Center at Texas State University, will enable the region to offer more active shooter trainings for first responders without having to rely on outside providers for instructors and materials.

A cybersecurity survey was sent to regional stakeholders including Town Administrators, Emergency Management Directors, and Police Chiefs in all 85 NERAC communities on October 4. After one week, over 60 responses from 51 municipalities were submitted. The survey aimed to assess the region's cybersecurity capabilities and needs. The NERAC Training and Exercise Subcommittee will use the results to identify ways to bolster the cybersecurity posture of the region.

### **Metro Mayors Coalition Shannon Grant**

On September 10 Shannon Grant Collaboration Meeting was well-attended and featured an update on local gang activity provided by Lt. Robert Impemba of the Revere Police Department's Narcotics and Gang Unit and the FBI's North Shore Task Force. The update emphasized several local gangs and the effects of recent federal indictments of members of MS-13 in Massachusetts. The attendees also discussed the FY2020 Shannon Grant Application, which was submitted to EOPSS in October.

### **Region 3 Health and Medical Coordination Coalition (HMCC)**

On September 26, HMCC held its first stakeholder meeting of the FY20 grant year. The primary objective of the meeting was to address the top-rated hazard from the Region 3 Hazard Vulnerability Assessment, which was identified as hazardous materials response. The Director and Deputy Director of the Massachusetts Department of Fire Services-HAZMAT Division presented at the event and provided information on the appropriate measures to take during a HAZMAT incident, as well as their role during and after an incident. The HMCC worked in partnership with the department to develop supplemental educational materials for attendees that coincided with the presentation.

On September 27, the HMCC was notified of an ongoing major gas leak in Lawrence and subsequent evacuations. The HMCC Duty Officer began contacting and notifying stakeholders across the region, and remaining in contact with stakeholders in Lawrence until that afternoon. At that point, stakeholders within the city notified the HMCC that they were not experiencing any impacts to their facilities.

On October 17, the Region 3 HMCC was activated after a strong coastal storm impacted the region, bringing heavy rain, strong winds, and numerous power outages. At the height of the outages, two hospitals, three community health centers, one public health department, and ten nursing homes/long-term care facilities dealt with power-related issues. The Region 3 Duty Officer maintained constant communication with these facilities for status updates and ensured any operational issues were addressed. Situational Reports were provided to the DPH Office of Preparedness and Emergency Management twice a day until all facilities were back on grid power.

On November 12, HMCC staff were asked to evaluate an exercise at Lowell General Hospital. Staff evaluated the response of 80+ exercise participants based on pre-determined evaluation criteria. The exercise tested the hospital's Code Capacity Response. When a hospital reaches Code Capacity, it exceeds its normal volume of patients, taxing normal operating procedures and hospital resources.

## ***Government Affairs***

The first year of the legislative session drew to a close on Wednesday, November 20. We had high hopes that the Legislature would take up several of our top priorities, including Governor Baker's Housing Choices bill and a transportation revenue package. However, neither of those priorities made it across the finish line in either branch before the end of the first year of the session. We will spend the time during informal session strategizing about how we can influence these legislative discussions and urge legislators to take up these and many other priorities in 2020.

## **Mayors Coalitions**

On November 13, the Metro Mayors Coalition, the North Shore Coalition, and the Commuter Rail Communities Coalition released a joint statement calling on the Legislature to make significant investments in transportation. The three coalitions, representing over 45 cities and towns, called for a 15-cent hike in the gas tax, which would raise an estimated \$450 million a year. In addition to the gas tax increase, the coalitions support expanding tolling to more highways, allowing a portion of toll revenue to support transit, expanding municipal revenue-raising tools like regional ballot initiatives and value capture, increasing surcharges on Transportation Network Companies like Uber and Lyft, and collaborating with other states in the Transportation Climate Initiative. The press statement garnered significant attention, with media outlets across the state picking up the story.

A little over a week prior to this joint press statement, the North Shore Coalition announced their Transportation Vision on November 1. The 18 communities of the coalition outlined short- and long-term actions to provide a 21<sup>st</sup> century transportation system to residents of the North Shore. The communities announced a regional commitment to pursue a bike share program, municipal green fleets, improved water transportation, and electrified and reliable commuter rail service. The vision includes 19 recommended action items that municipalities can undertake themselves, or together with neighboring communities to improve transportation in and around the North Shore.

## **Statewide Municipal Conference**

On October 8, we hosted our annual MARPA municipal conference with the state Division of Local Services. This year's conference, "21<sup>st</sup> Century Municipalities: Challenges and Opportunities," featured remarks from Lieutenant Governor Karyn Polito, followed by breakout sessions focused on climate resiliency, new challenges of running a municipality, moving towards age-friendly communities, cybersecurity, and regionalization. We had over 200 participants for the half day event at the College of the Holy Cross in Worcester.

## ***Staffing Update***

**Tyrone Calliste** joined MAPC as our new IT Helpdesk Specialist. Prior to MAPC, Ty worked at both Lasell College and Brandeis University in a variety of IT roles including desktop and application support. Ty hopes to bring his experience supporting various educational applications to bear on our efforts to introduce a new suite of tools to replace our current CRM environment.