

WHERE DO YOU WALK IN TOWN?

WHAT INTERSECTIONS OR STREETS COULD BENEFIT THE MOST FROM CROSSWALKS OR SIDEWALKS?

WHERE WOULD YOU LIKE TO WALK TO IN TOWN IF IT WERE SAFER AND MORE PLEASANT TO DO SO?

ANY IDEAS FOR STREETScape IMPROVEMENTS?



WALKING & BIKING AROUND TOWN?



Water fountains, signage, and public art like these examples along other trails can make the Rockland Rail Trail a more attractive destination for a variety of users.



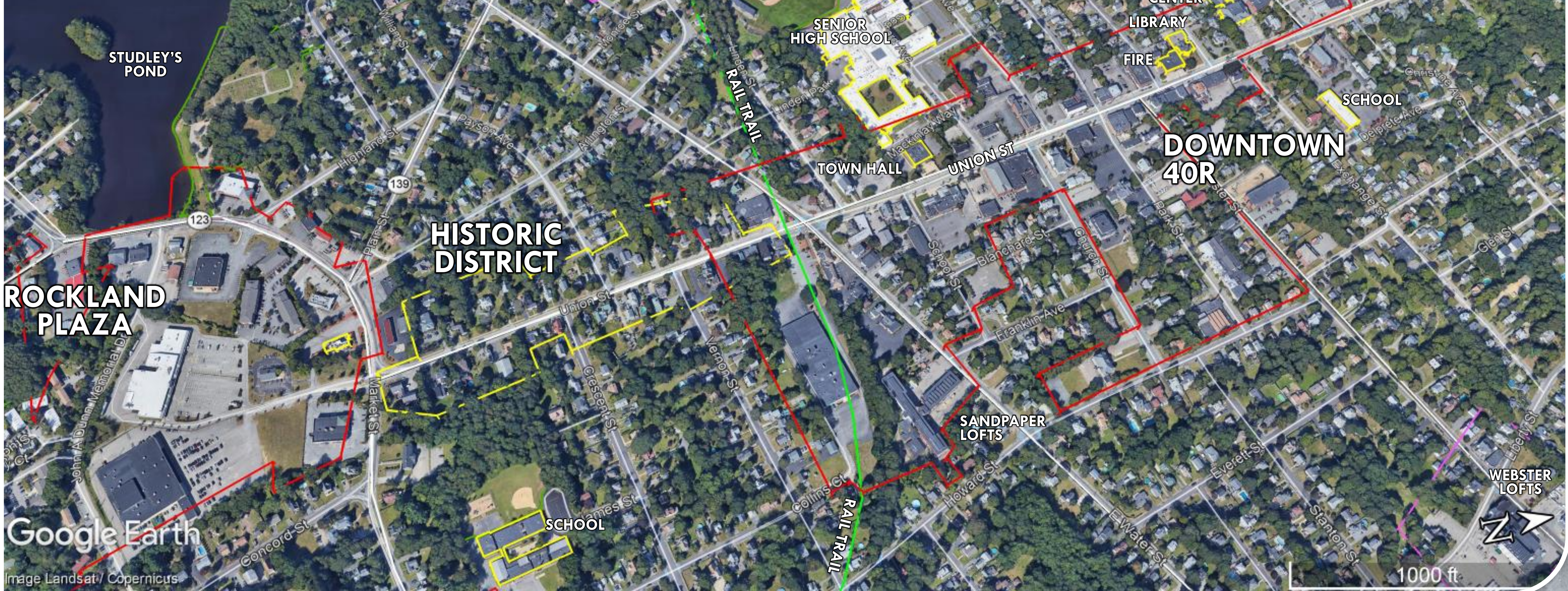
RAIL TRAIL



UNCONVENTIONAL CROSSWALKS?

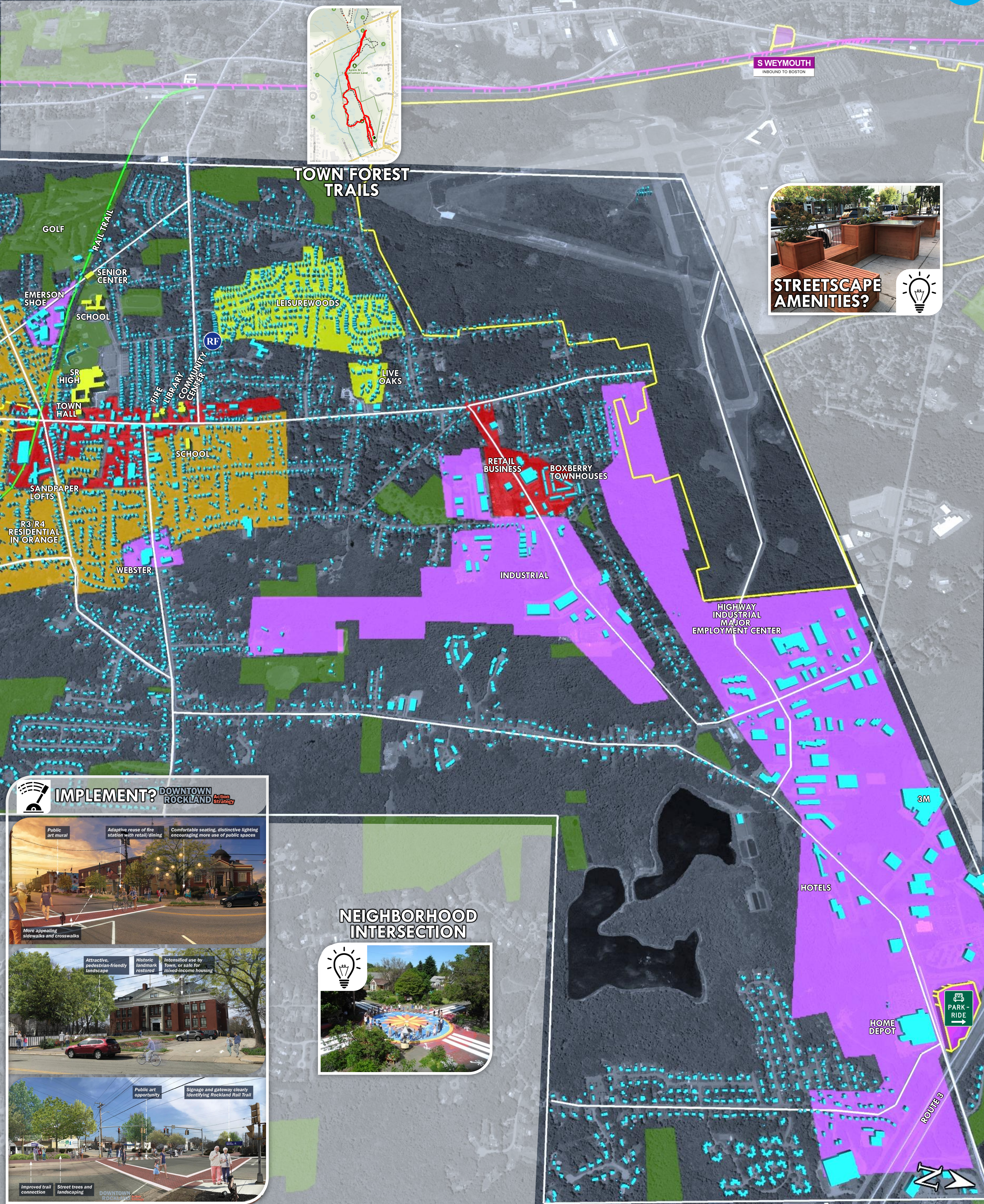


DETAILED AERIAL OF DOWNTOWN ROCKLAND



Google Earth

4000 ft



IMPLEMENT? DOWNTOWN ROCKLAND Action Strategy

- Public art mural
- Adaptive reuse of fire station with retail/dining
- Comfortable seating, distinctive lighting encouraging more use of public spaces
- More signaling sidewalks and crosswalks
- Attractive, pedestrian-friendly landscape
- Historic landmark restored
- Intensified use by Town, or sale for mixed-income housing
- Public art opportunity
- Signage and gateway clearly identifying Rockland Rail Trail
- Improved trail connection
- Street trees and landscaping

NEIGHBORHOOD INTERSECTION

Google Earth

4000 ft

DO YOU EVER BIKE AROUND TOWN?
WHERE?

WHERE WOULD YOU LIKE TO BIKE TO,
IF IT WERE SAFER?

IDEAL LOCATIONS FOR BIKING FACILITIES?

ANY IDEAS FOR BIKING AMENITIES? WHERE ON THE MAP?



RAIL TRAIL



Water fountains, signage, and public art like these examples along other trails can make the Rockland Rail Trail a more attractive destination for a variety of users.



WAYFINDING & AWARENESS



ON-ROAD BIKE LANES/
SHARED LANES



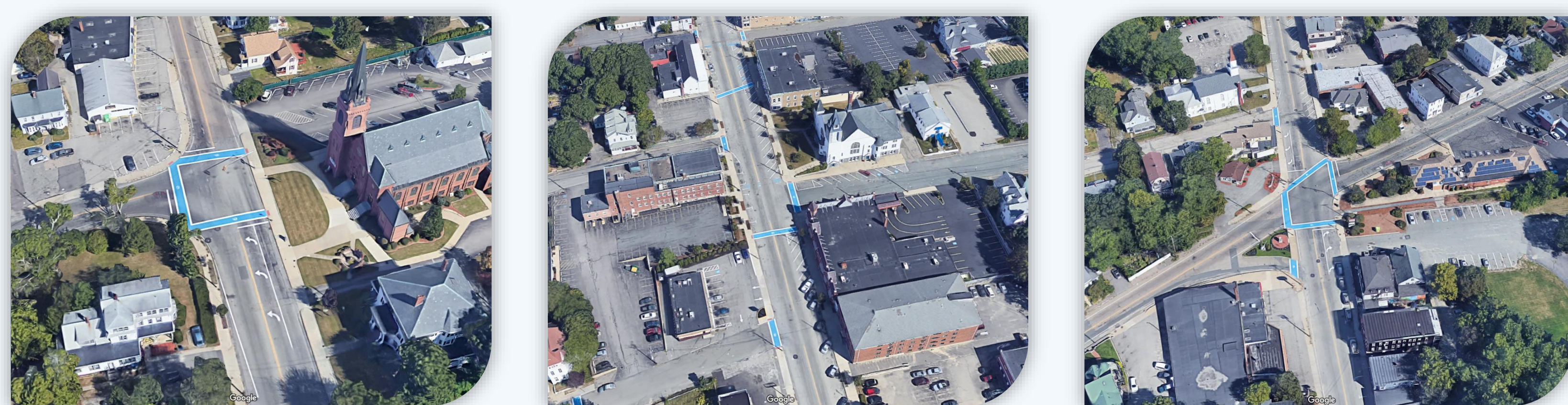
RAIL TRAIL
SIGNAGE



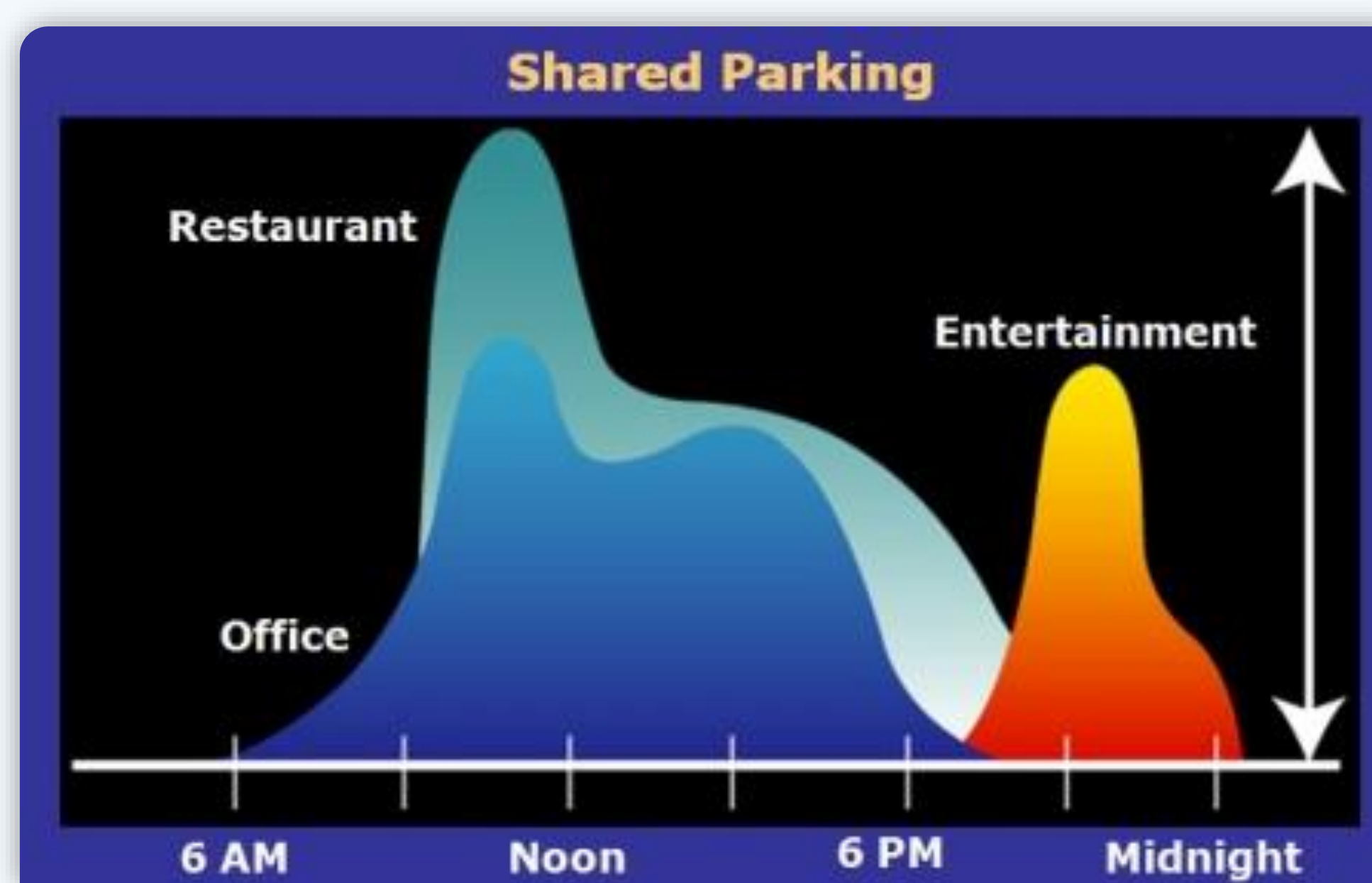
BIKE STORAGE
FACILITIES

WHICH INTERSECTIONS OR AREAS COULD BENEFIT FROM CHANGES TO LANES/TURNS, WAYFINDING SIGNAGE, OR CLEARER PARKING INFORMATION?

WHAT ARE THE PLACES THAT YOU DRIVE TO THAT ARE LESS THAN A MILE FROM YOUR HOME, WORK OR SCHOOL?



GATEWAY INTERSECTIONS & WAYFINDING PARKING OPPORTUNITIES?



Design and Install Coordinated Parking Signage



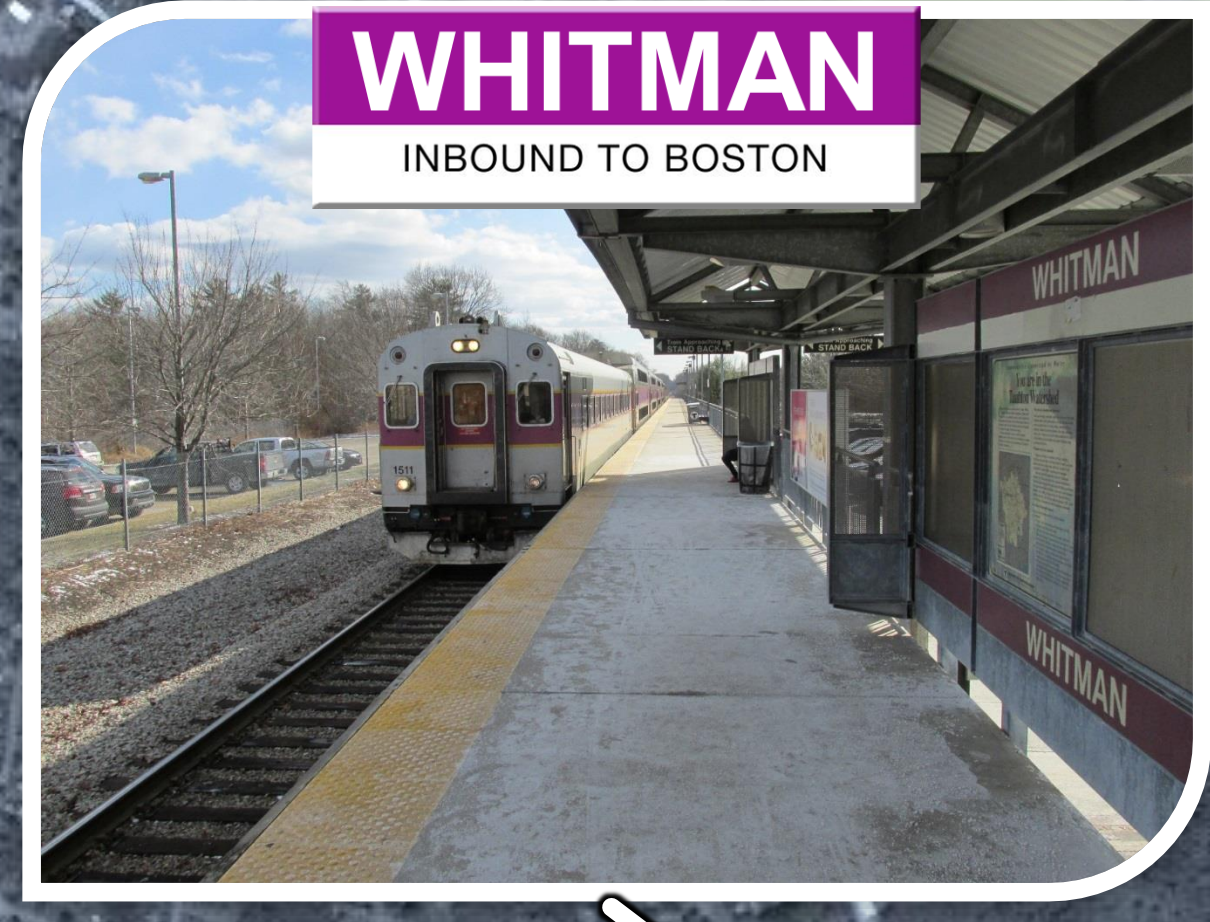
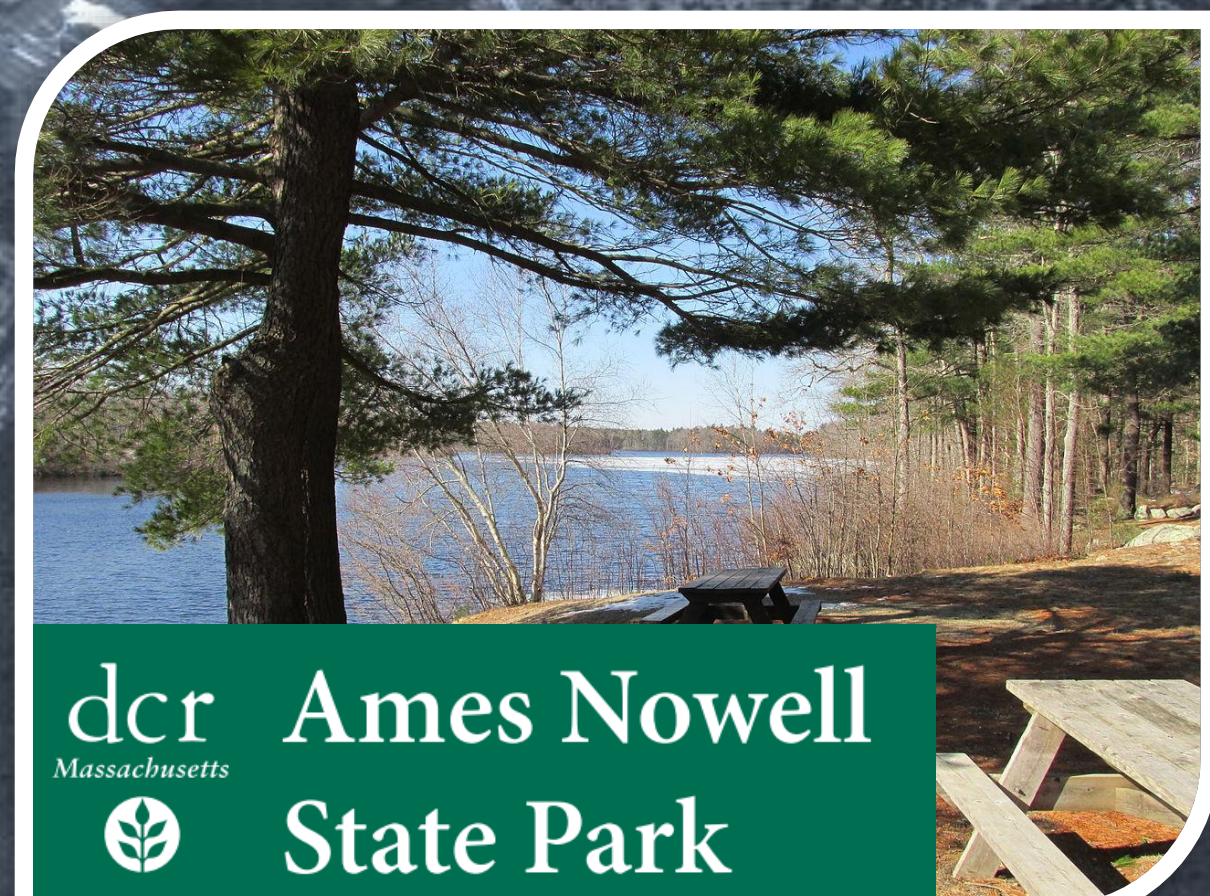
Consistent signage with a unified design could be installed at the multiple public parking areas across downtown to clearly communicate that they exist and are public. The Town should also pursue opportunities to make school parking available for public use outside of school hours and install signage indicating its availability.

Clear, consistent signage helps make public parking easier to locate and use.



(Left) The Doughboy parking lot could be a potential location for shared parking. (Right) There are existing shared parking arrangements in downtown, such as this lot shared by Bagnell Auto Supply, Rockland Public Schools, and the First Baptist Church. Signage needs to clearly explain hours and rules of access for shared parking.





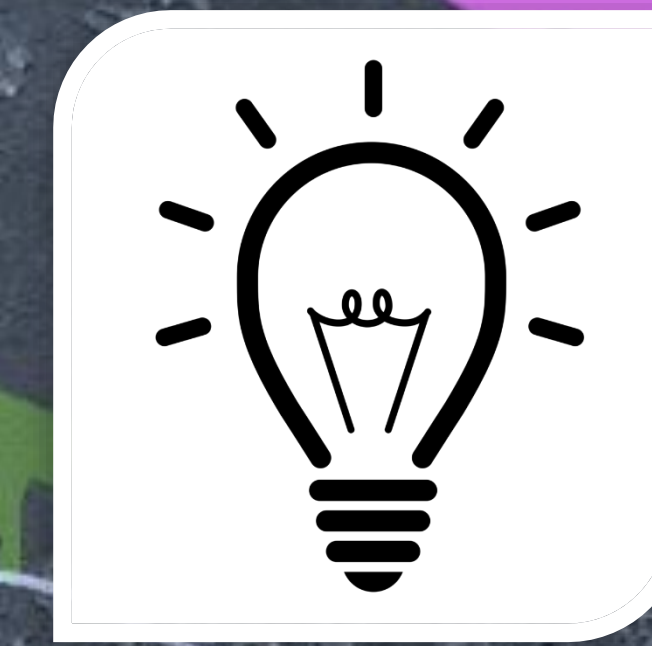
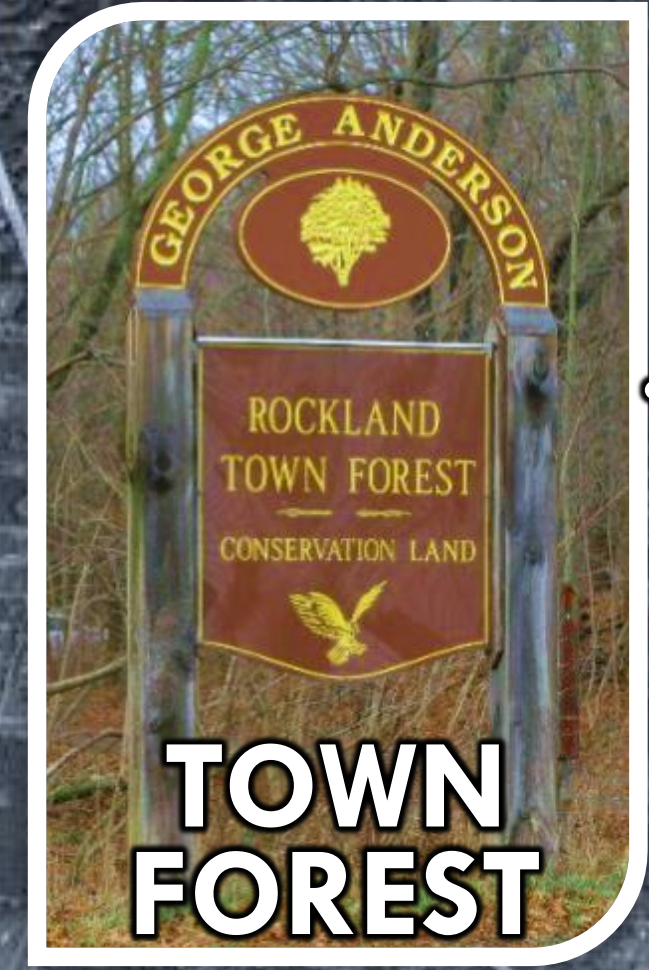
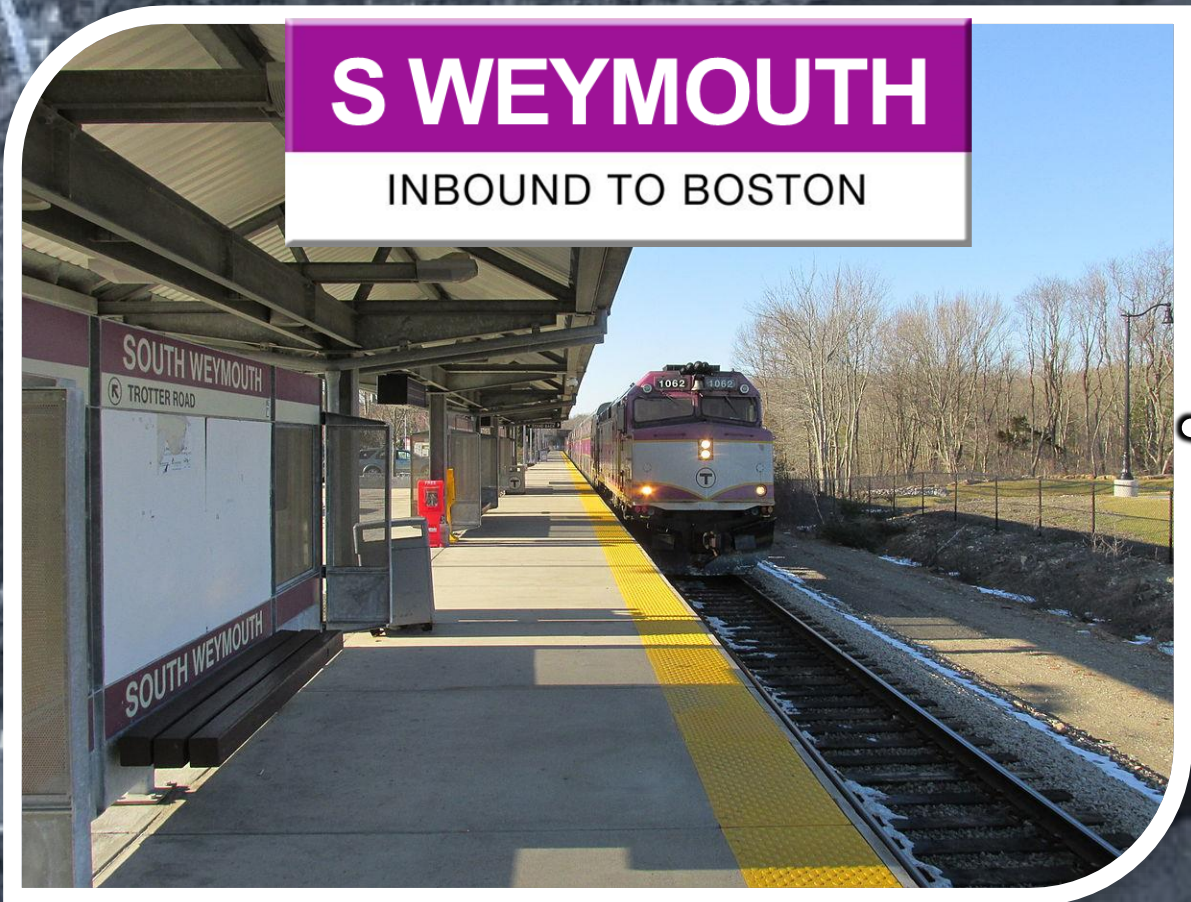
Rockland Flex Ride Schedule & Map

Outbound	Inbound
Rockland Community Center	Signature Healthcare formerly Brockton Hospital
8:45a	9:20a
10:00a	10:35a
11:15a	11:50a
12:30p	1:05p
1:45p	2:20p
3:00p	3:35p
4:15p	4:50p

BAT's Rockland Flex Ride bus service does not run on weekends or holidays.

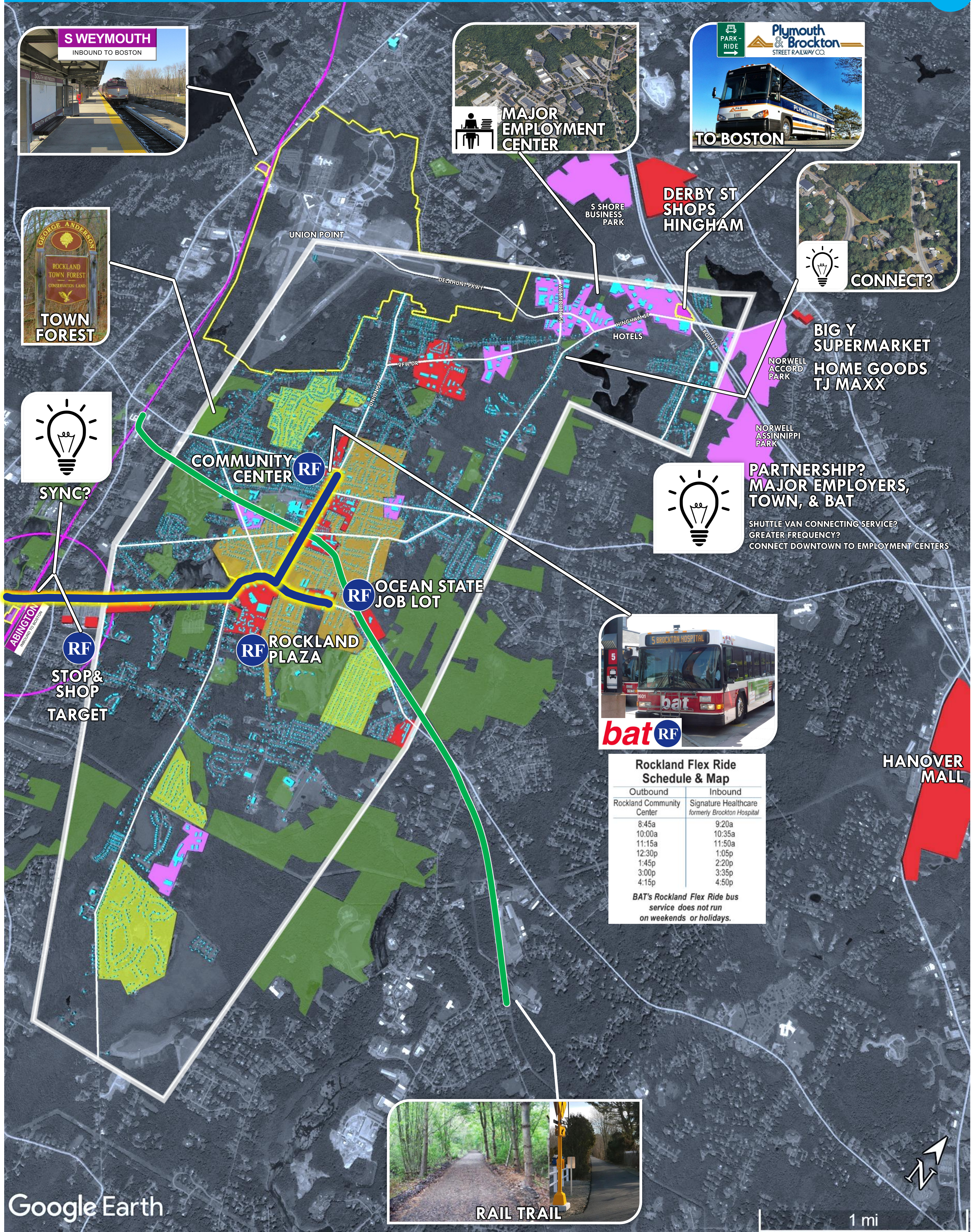
Google Earth

© 2018 Google



**PARTNERSHIP?
MAJOR EMPLOYERS,
TOWN, & BAT**

SHUTTLE VAN CONNECTING SERVICE?
GREATER FREQUENCY?
CONNECT DOWNTOWN TO EMPLOYMENT CENTERS



Rockland Flex Ride Schedule & Map

Outbound	Inbound
Rockland Community Center	Signature Healthcare formerly Brockton Hospital
8:45a	9:20a
10:00a	10:35a
11:15a	11:50a
12:30p	1:05p
1:45p	2:20p
3:00p	3:35p
4:15p	4:50p

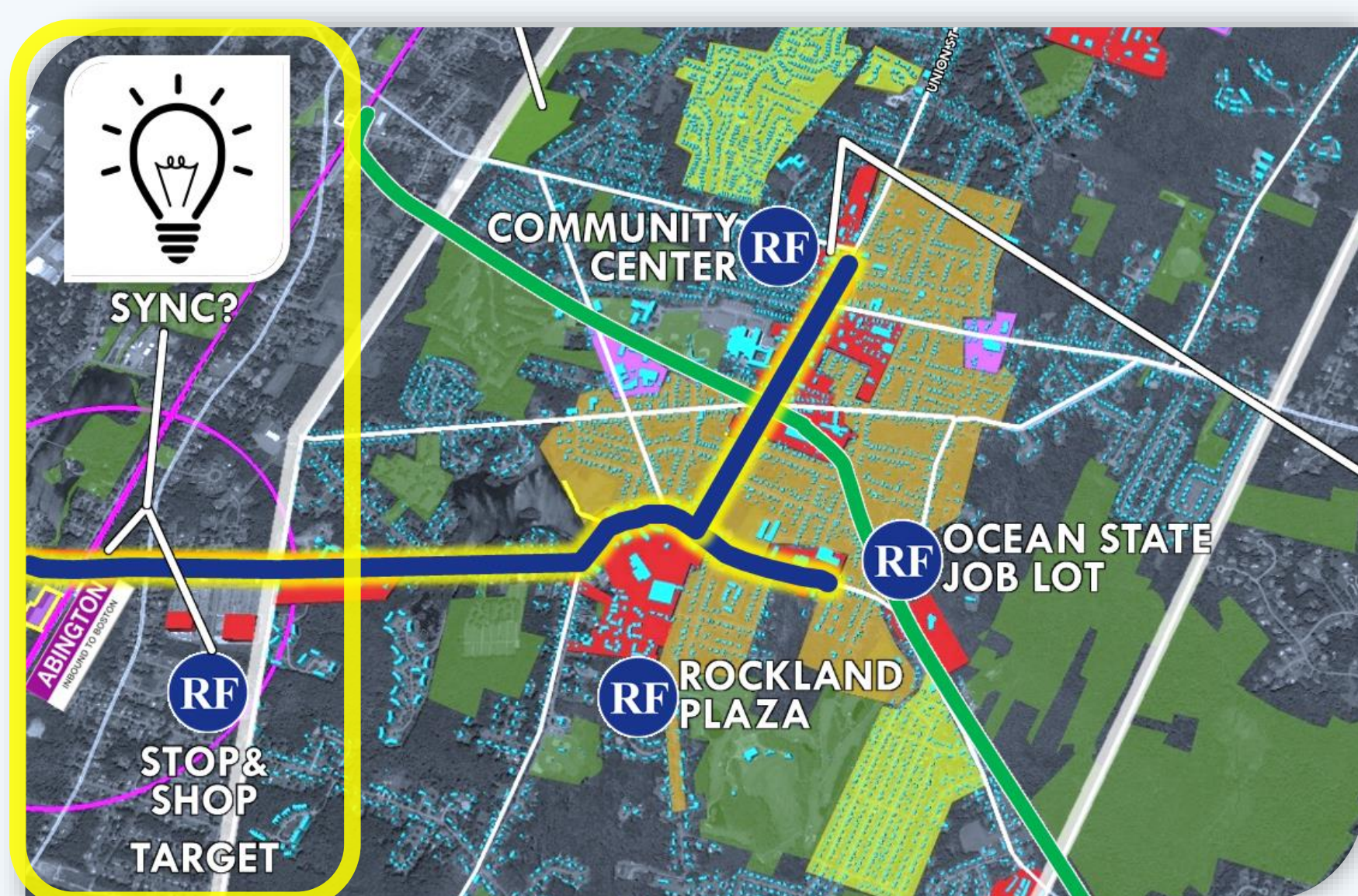
BAT's Rockland Flex Ride bus service does not run on weekends or holidays.



WOULD YOU EVER TAKE A SHUTTLE BUS OR TROLLEY TO DOWNTOWN, A COMMUTER RAIL STATION, OR OTHER BUSINESS DISTRICT IN TOWN, IF SERVICE WERE FREQUENT & CONVENIENT?

- *prominent bus signs?*
- *invest to extend hours?*
- *extend existing route to connect downtown retail & major employers?*

WOULD YOU SUPPORT A PARTNERSHIP BETWEEN THE TOWN, BAT, & MAJOR EMPLOYERS FOR SHUTTLE BUS SERVICE FOR WORKERS & RESIDENTS?



Rockland Flex Ride Schedule & Map

Outbound	Inbound
Rockland Community Center	Signature Healthcare formerly Brockton Hospital
8:45a	9:20a
10:00a	10:35a
11:15a	11:50a
12:30p	1:05p
1:45p	2:20p
3:00p	3:35p
4:15p	4:50p

BAT's Rockland Flex Ride bus service does not run on weekends or holidays.



- *existing conventional bus*
- *limited route*
- *limited service frequency*
- *no visible bus stops*

- *rebranded historic trolley?*
- *extended route?*
- *more frequent service?*
- *prominent trolley stops?*

PURSUE TRANSPORTATION MANAGEMENT ASSOCIATION?

NEPONSET VALLEY TMA
Transportation Management Association

MOBILE SHUTTLE TRACKER

Download the App

Ride Systems
Ride Systems

FREE Employee Shuttle Service for:

Eversource 101 Station Drive 690 Canton Street >> 128 Commuter Rail Station

Track the Shuttle Online at neponsetvalleytma.com

- *membership based*
- *public-private partnerships*
- *businesses, institutions & municipalities*
- *solutions for commuters*
- *reduce traffic congestion*
- *improve air quality*
- *increase access to opportunities*