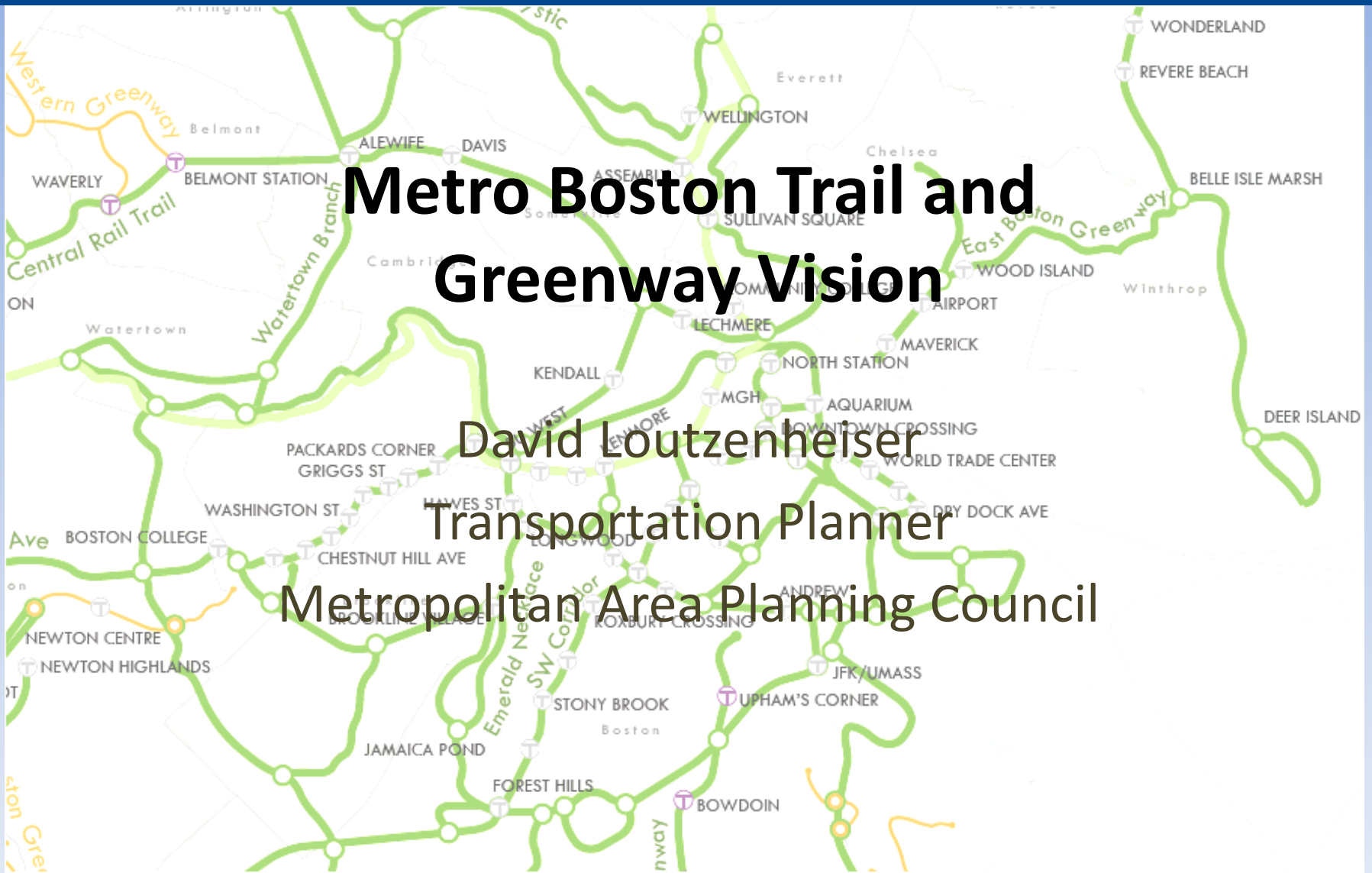


Metro Boston Trail and Greenway Vision

David Loutzenheiser
Transportation Planner

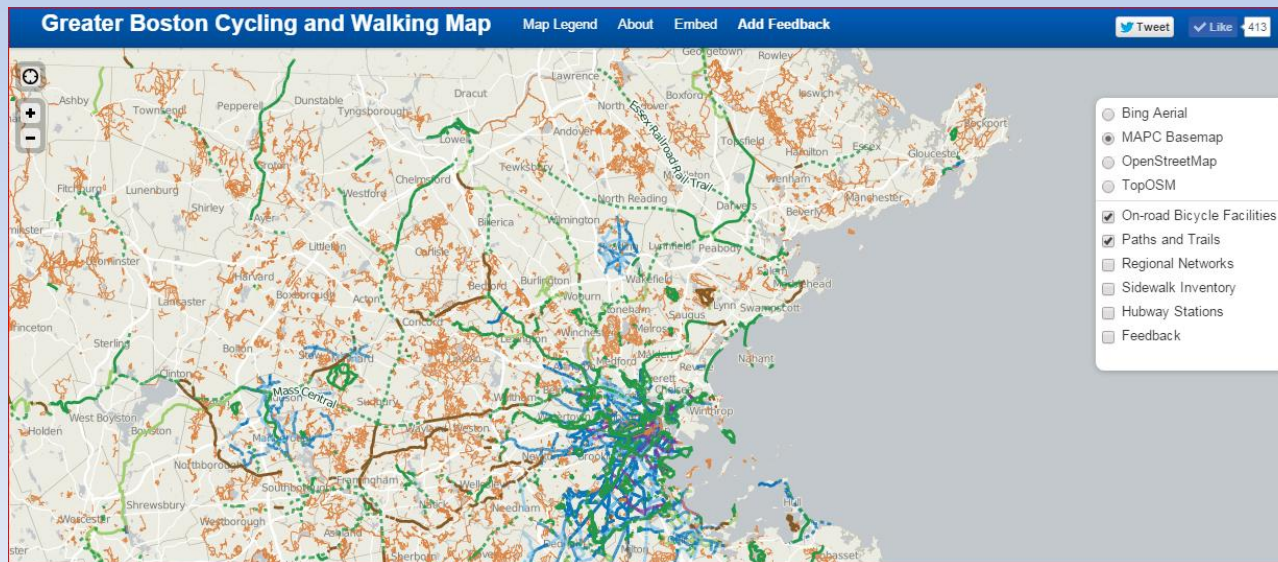
Metropolitan Area Planning Council



MAPC CYCLING AND WALKING MAP



- MAPC project to map all cycling and walking facilities
- Rail-trails, hiking trails, bike lanes, cycle tracks...
- <http://trailmap.mapc.org/>



2012 Greater Boston Cycling and Walking Map



The comprehensive guide to
bicycle facilities, walking paths,
and upcoming projects

trailmap.mapc.org

OUR VISION



- Connected regional corridors for active transportation
 - Connecting the urban area to open spaces
 - Connecting neighborhoods to work places
- Building a coalition of leaders in the region to plan, sell, implement
 - Advocacy Groups
 - Foundations
 - Cities and towns

We have done this before!

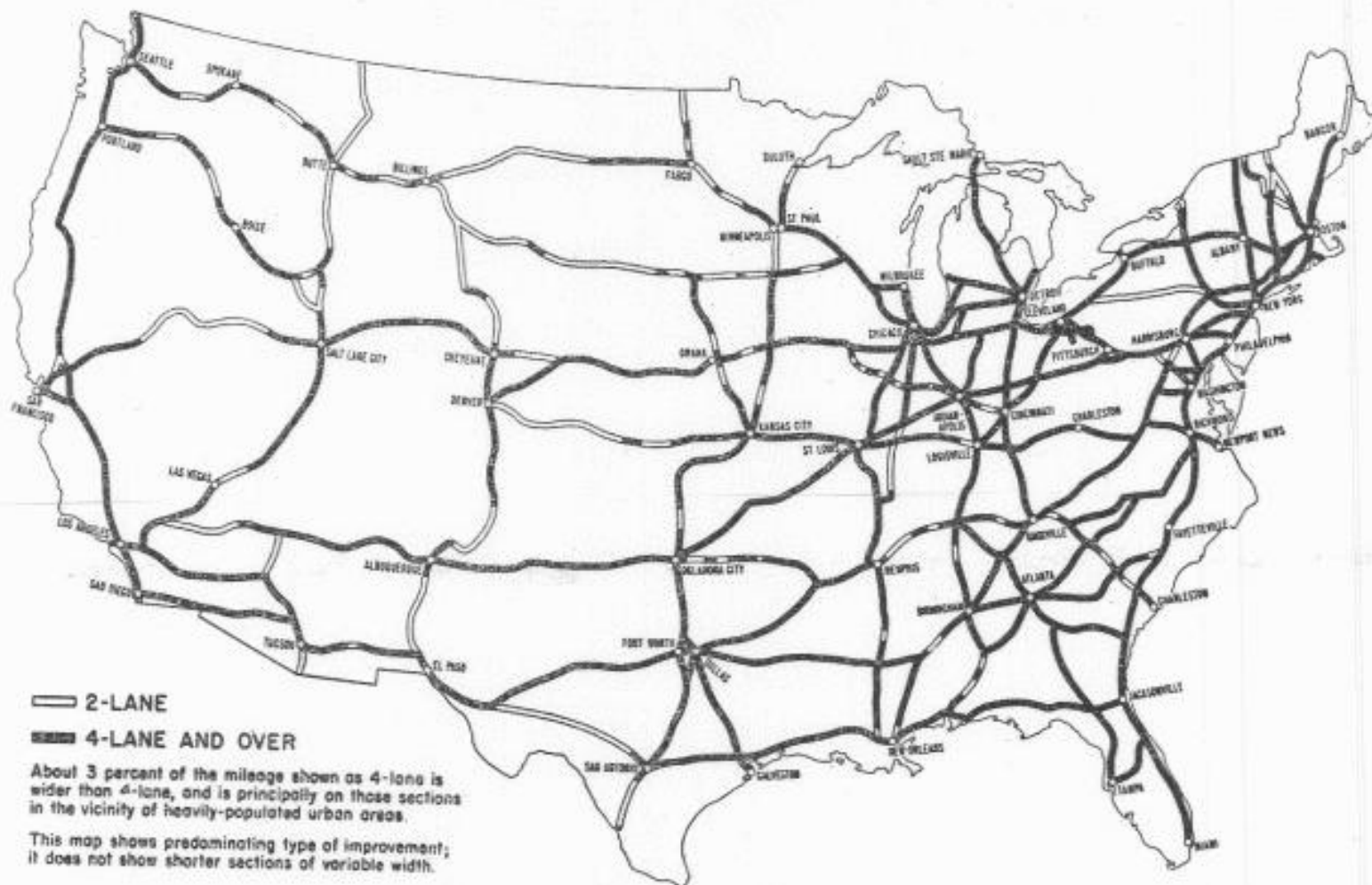


Figure 2.—Estimated status of improvement of the National System of Interstate Highways as to lane width, in 1965.

Examples – Copenhagen Bicycle Highways



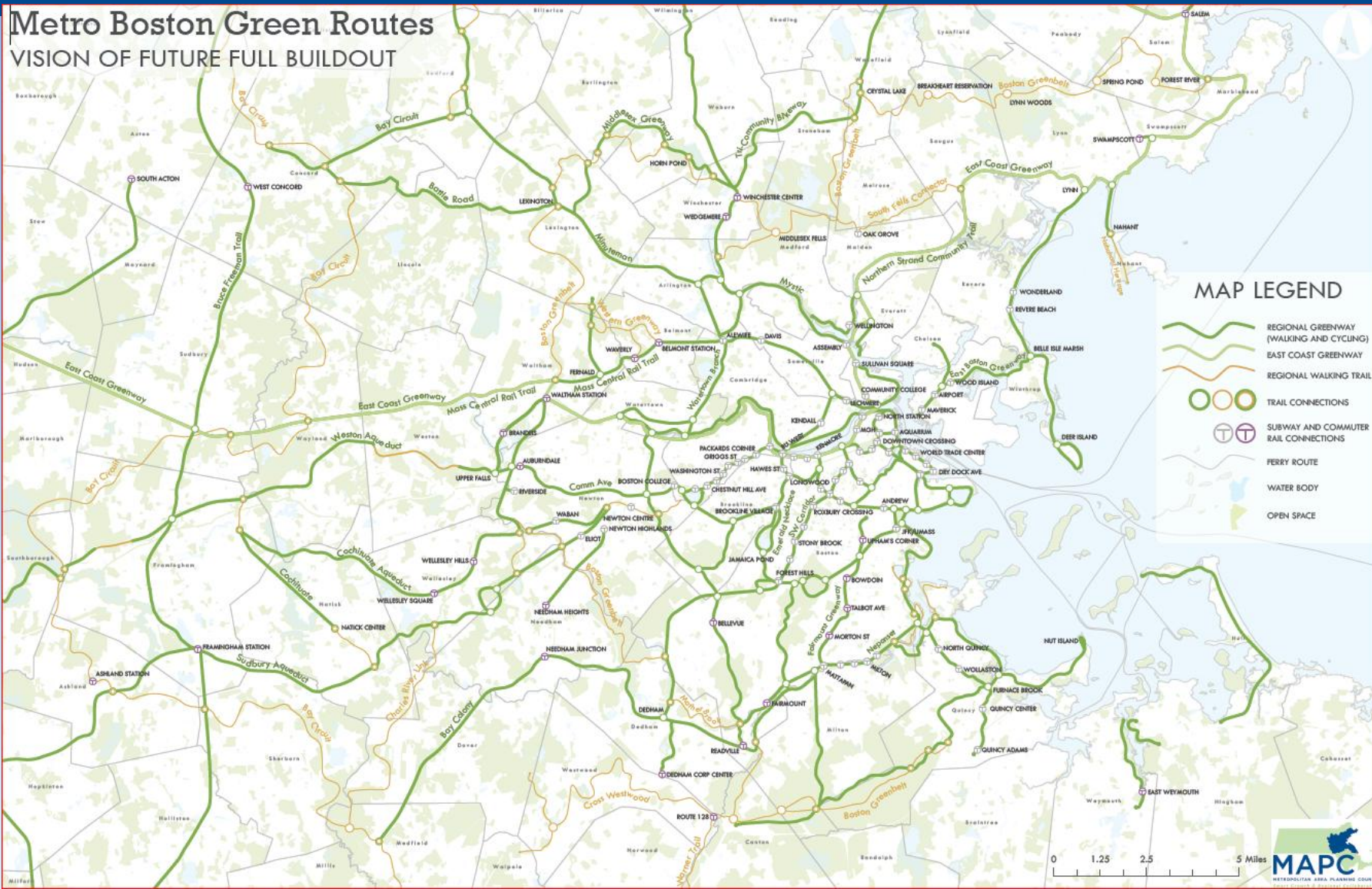
Greenway Vision



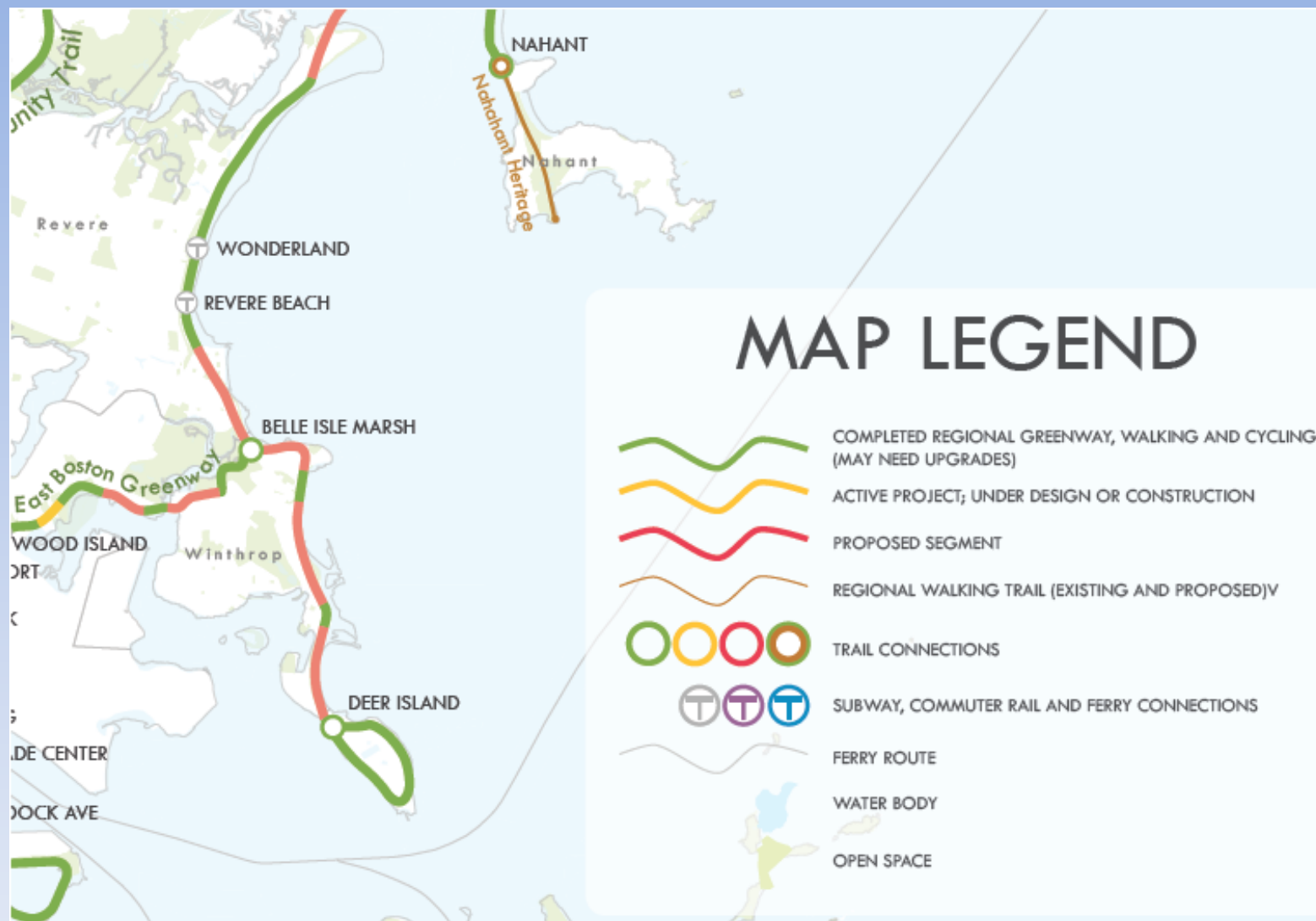
- *A network of connected greenways and trails*
 - Connects existing and future shared use paths into a series of connected routes
 - Utilizes corridors where available including inactive railroad lines, utility corridors, aqueducts, and rivers
 - Interest in trails locally is very strong



GreenRoutes Vision – Complete Network



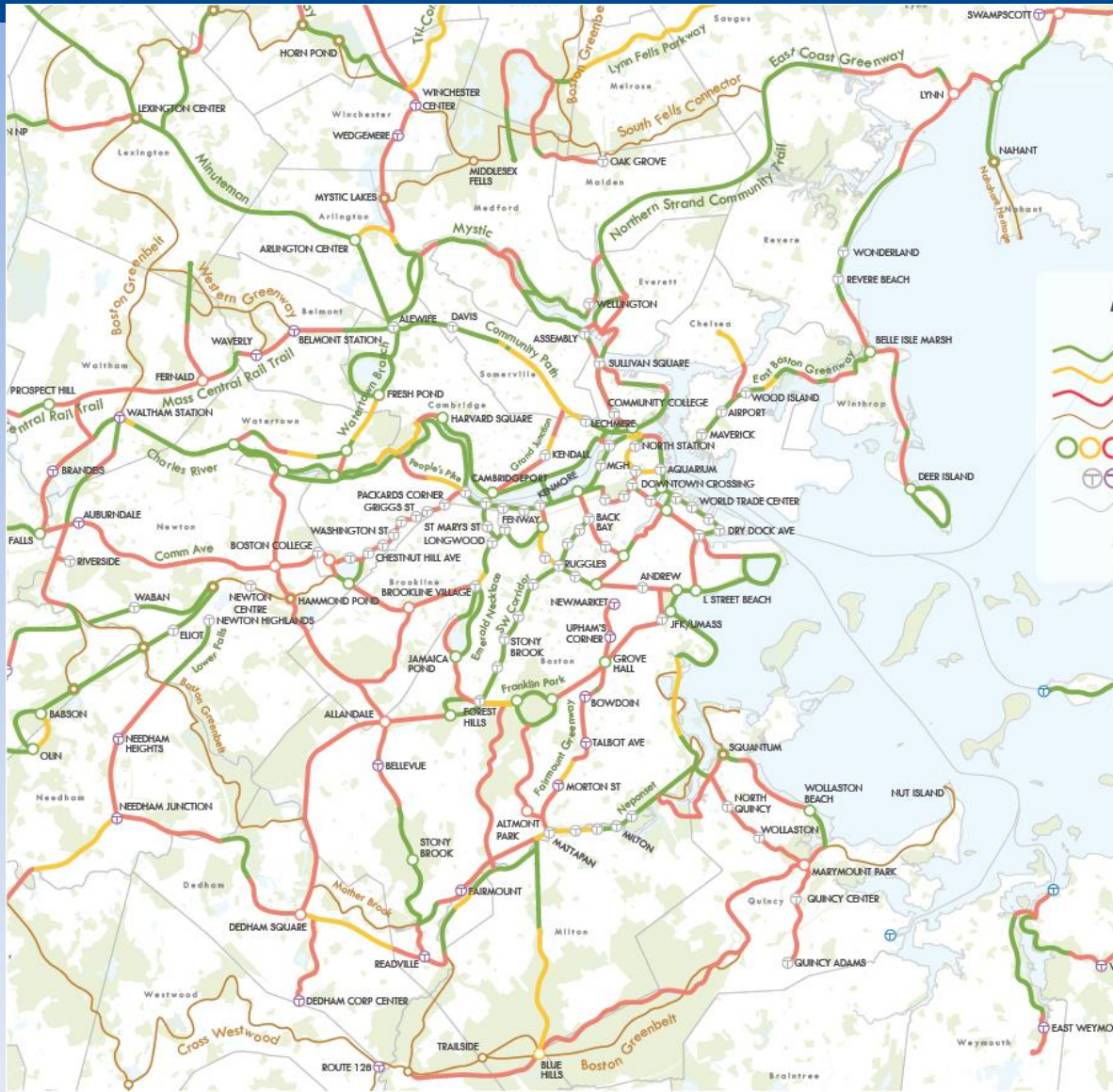
GreenRoutes Vision – Current Status



GreenRoutes Vision – Current Status



Key Inner Core Trail Projects



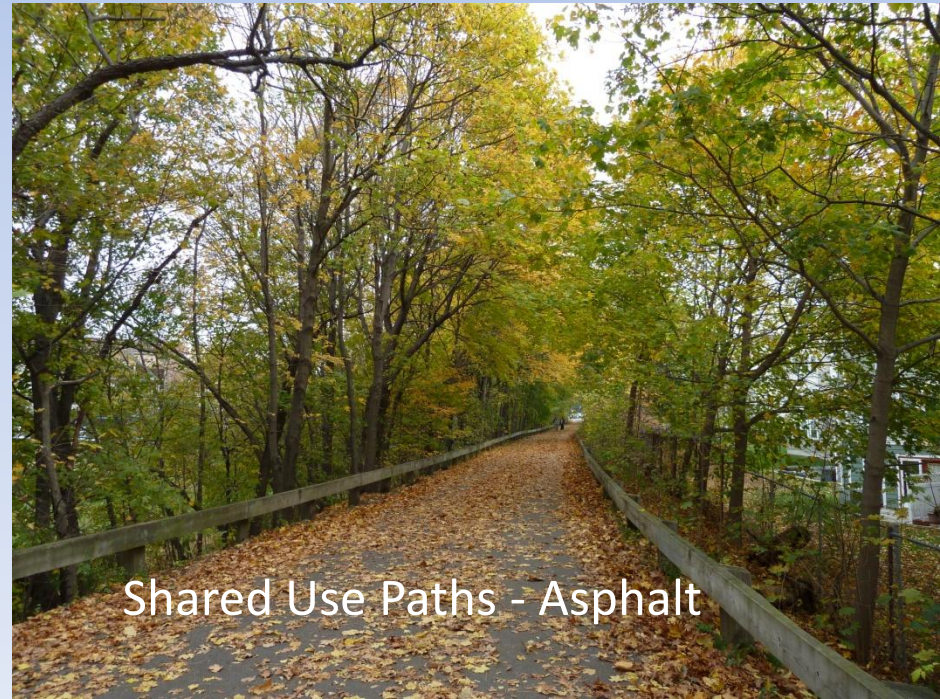
Greenway Types - Separated



Cycle Tracks



Shared Use Paths – Stone dust



Shared Use Paths - Asphalt

Greenway Types – Shared Roadway



How do we share this street with all users?



Advisory Lanes

Greenway Types – Road Diet



Laurier St, Montreal 2007



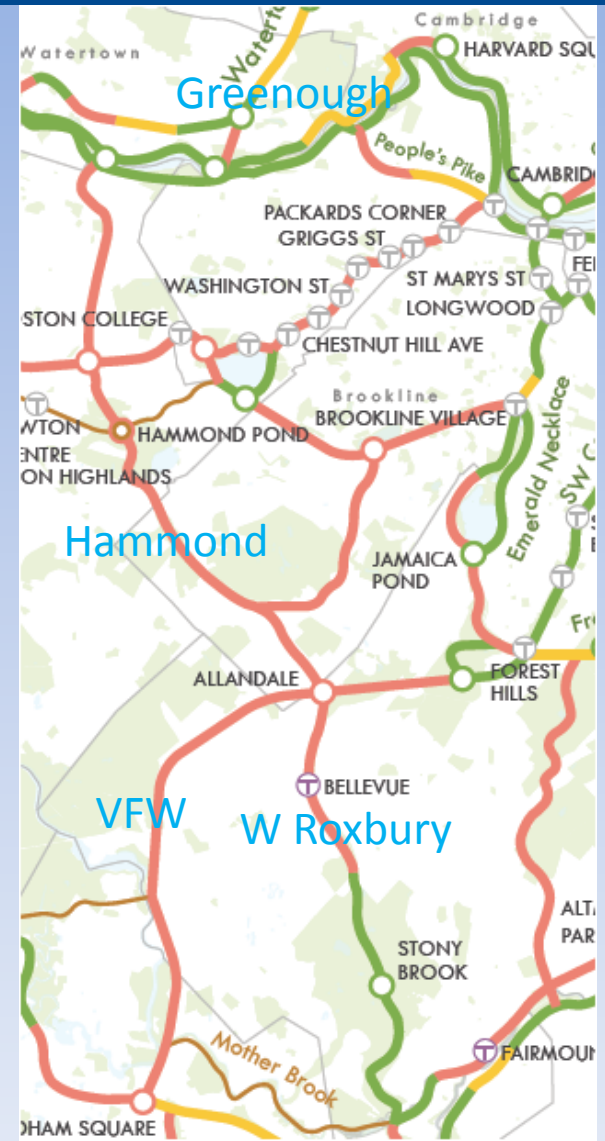
2014

Significant Greenway Projects



- Huge opportunity to develop **Greenways** to provide continuous transportation corridors for cycling and walking
 - DCR Parkways
 - Oceanfront Corridors
 - Aqueduct Trail
 - Mass Central Rail Trail

DCR Parkways



Beaches



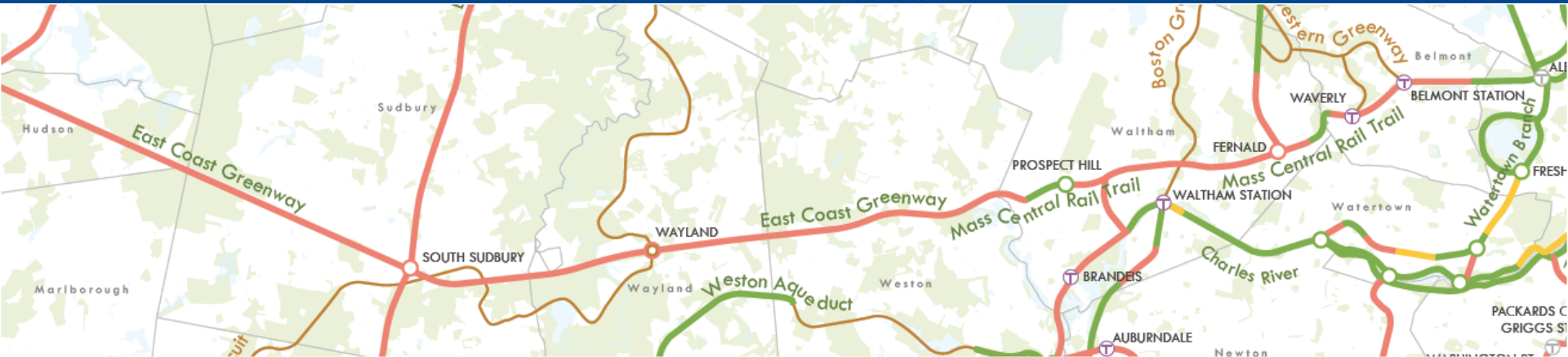
Aqueduct Trail Network – 67 miles



- 5 miles signed trail
- 28 miles open to use (not signed)
- 15 miles permitting in process
- 19 miles alignment proposed



Mass Central Rail Trail



- Joint MassDOT/DCR/MAPC “kickoff” meeting November 18
- Communities want to move on trail development
- MassDOT funding vs local development



REGIONAL WALKING TRAIL SYSTEM



- Regional Walking Trail System
 - Proposed regional walking trail network framed by the existing Bay Circuit Trail and the proposed Boston Greenbelt Trail, and Cape Ann Trail with existing radial routes including the Charles River Link, Aqueducts, and Warner Trail
 - Walking trails connect not only people to linear transportation and recreation but highlights and helps preserve open space greenbelts and wildlife habitat

Walking Trail Types



Proposed Regional Walking Trails

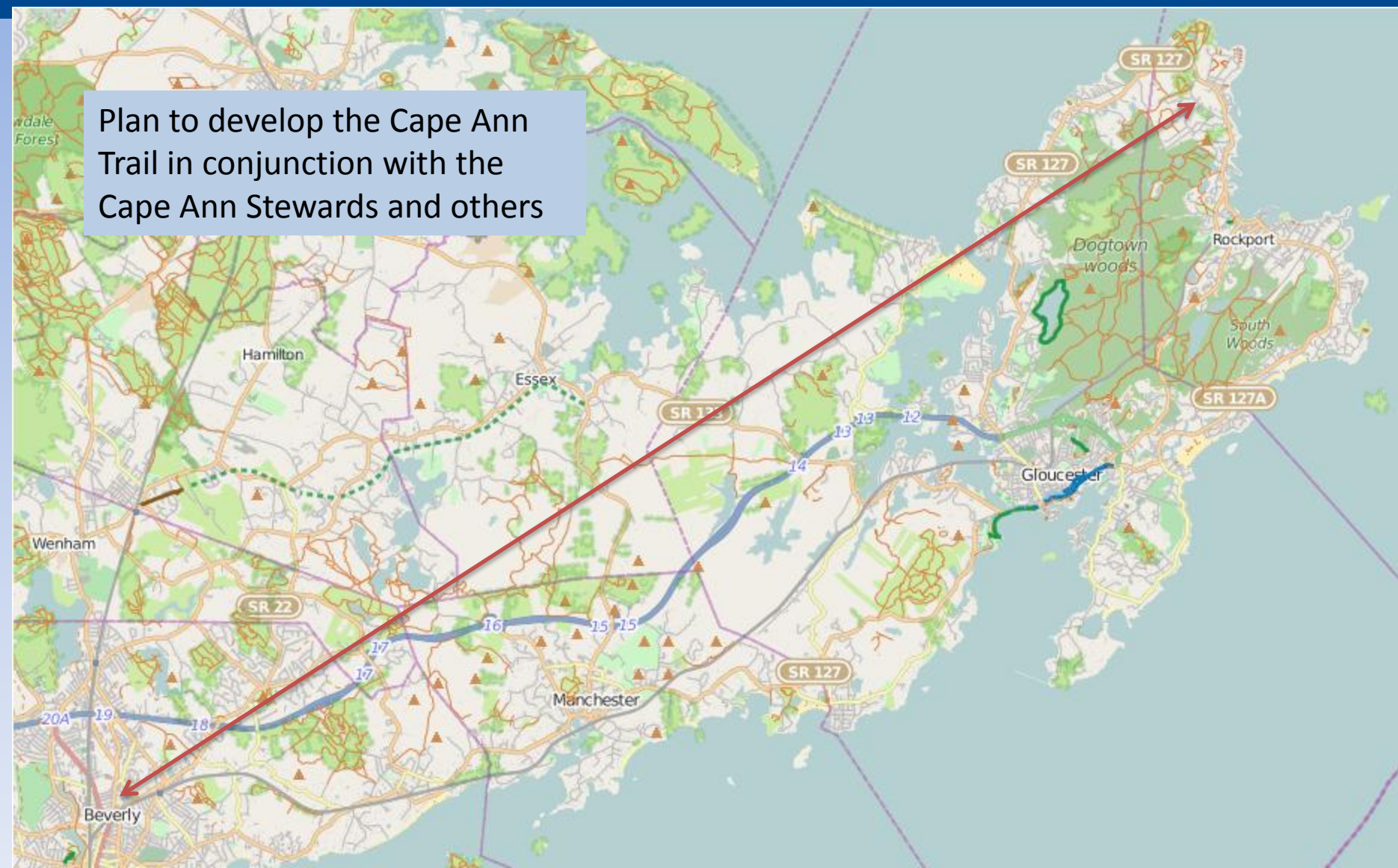


- Huge opportunity to develop **Greenbelts** to connect existing trails and preserve and connect unprotected land
 - Boston Greenbelt Trail
 - Cape Ann Trail
 - Cross Westwood/Tri-Town
 - Warner Trail Extension
 - South Fells Connector

CAPE ANN TRAIL



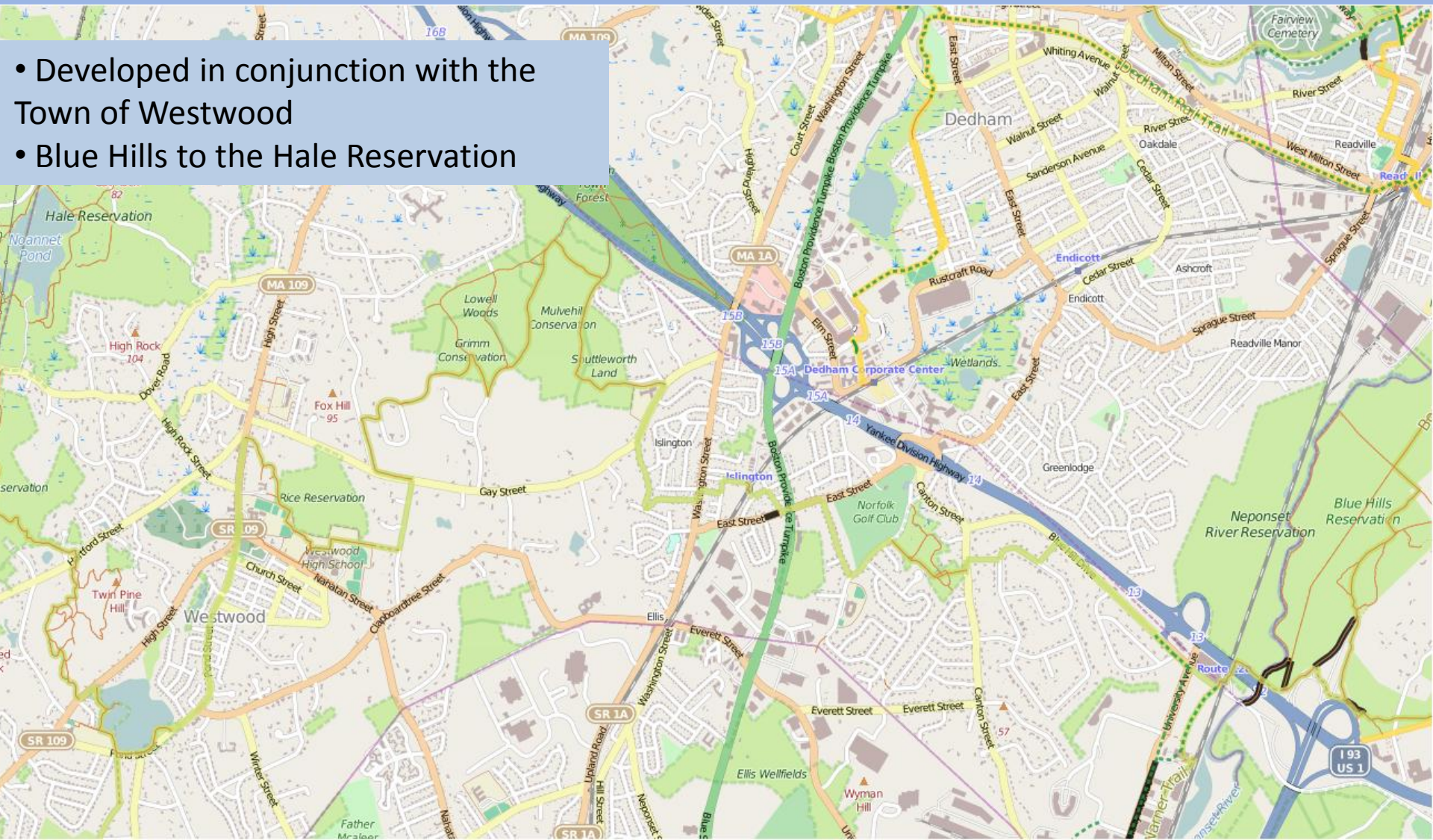
Plan to develop the Cape Ann Trail in conjunction with the Cape Ann Stewards and others



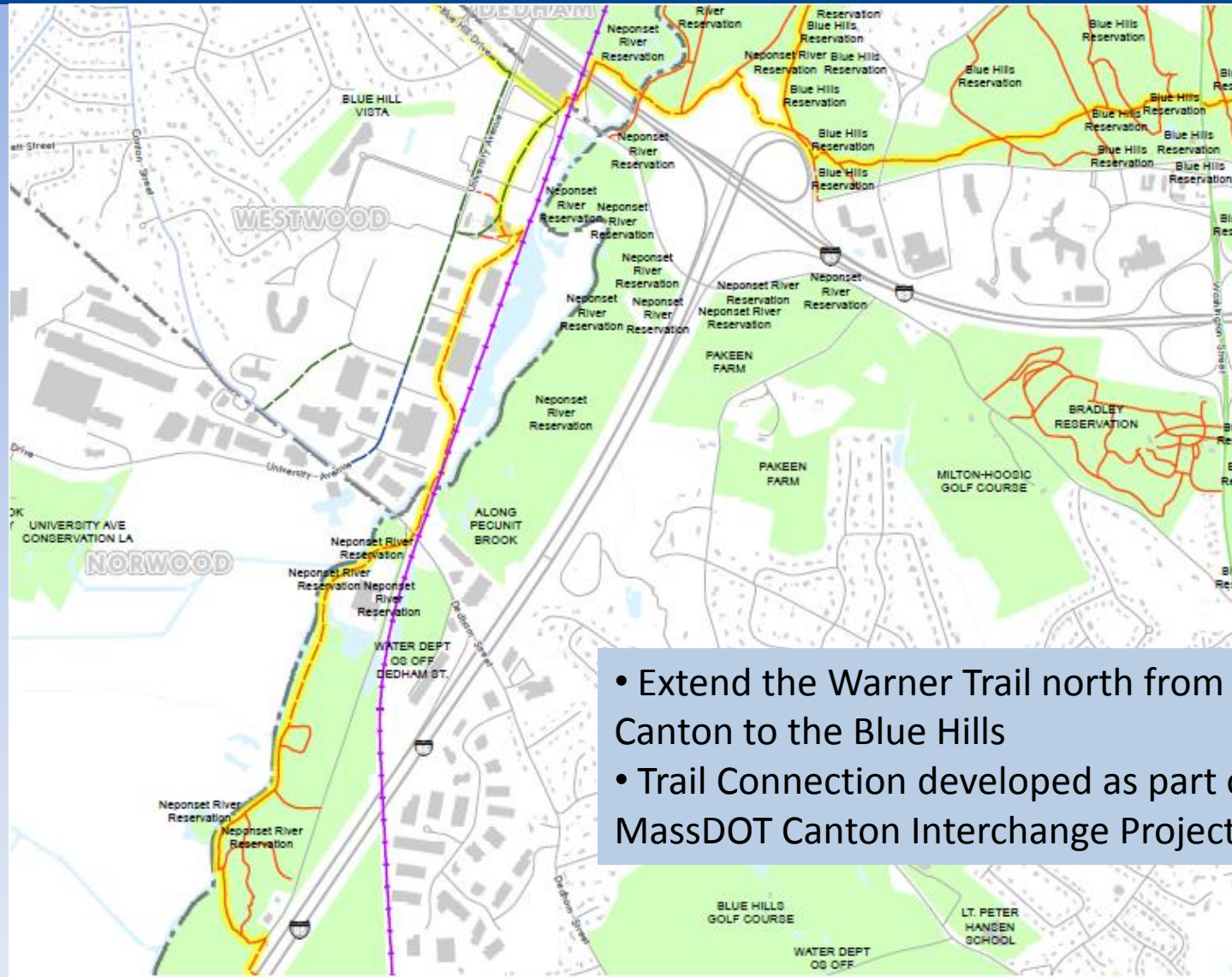
CROSS WESTWOOD TRAIL



- Developed in conjunction with the Town of Westwood
- Blue Hills to the Hale Reservation

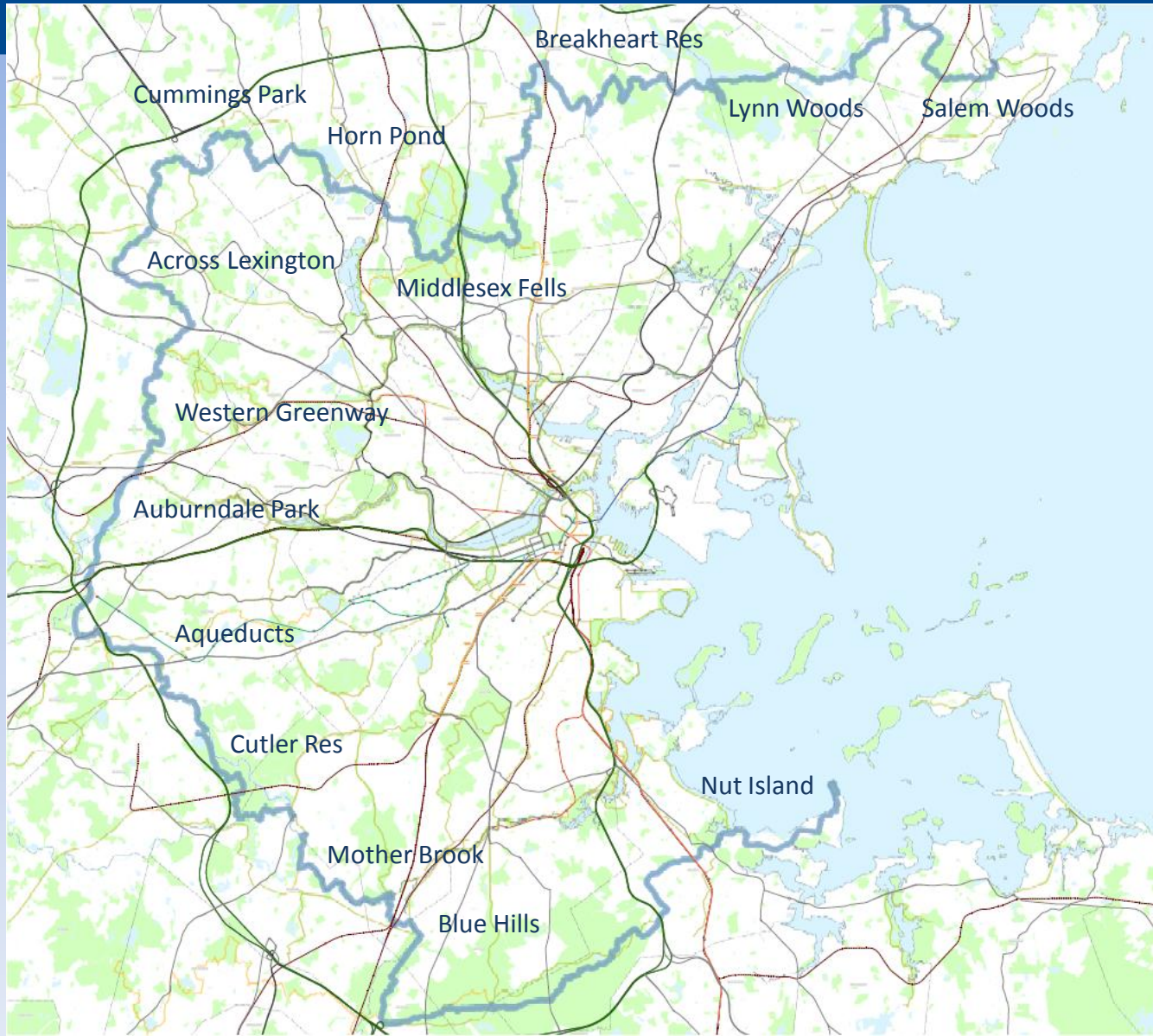


WARNER TRAIL EXTENSION

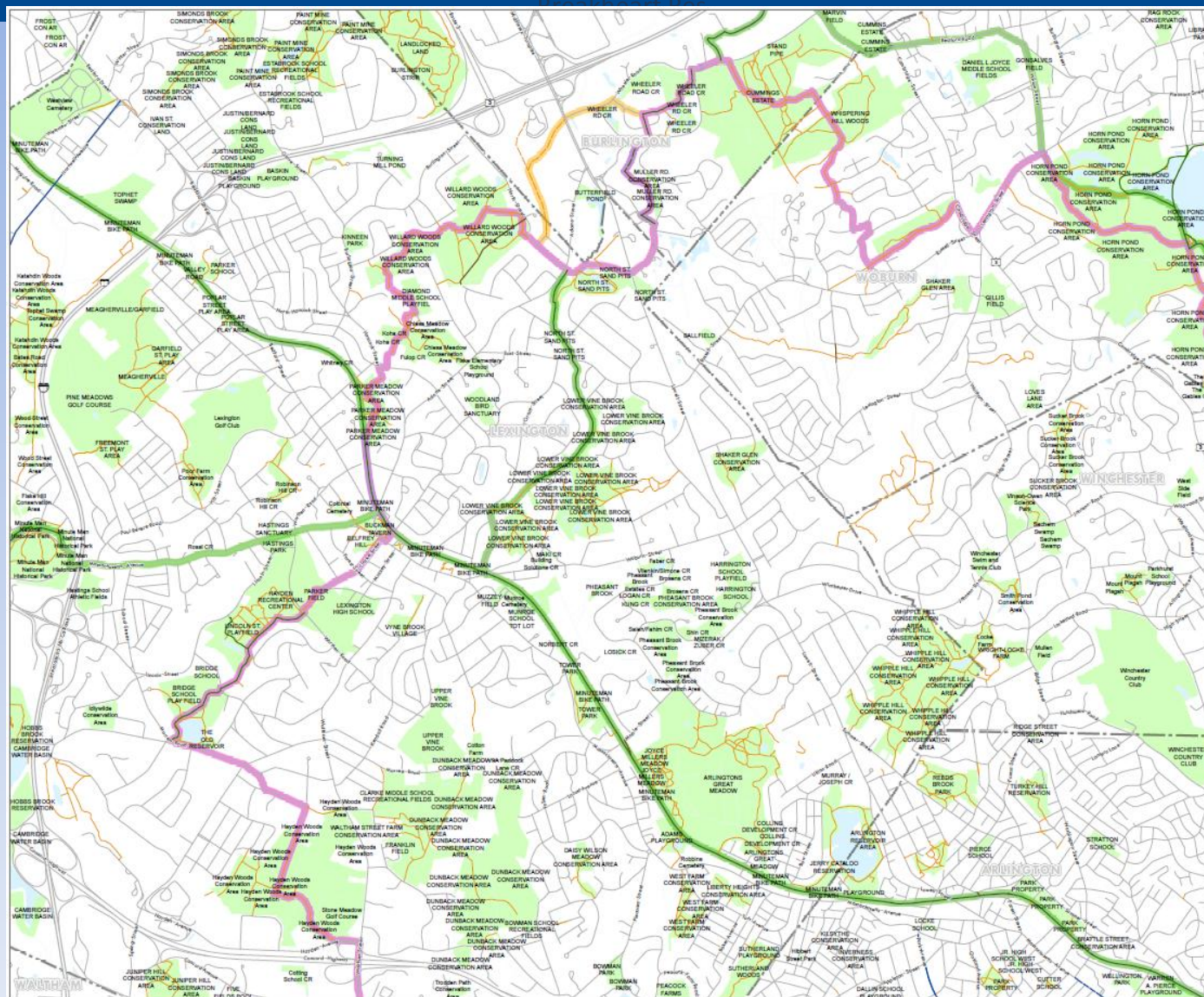


- Extend the Warner Trail north from Canton to the Blue Hills
- Trail Connection developed as part of MassDOT Canton Interchange Project

BOSTON GREENBELT TRAIL – 90 miles



BOSTON GREENBELT TRAIL – Section Detail



Boston Greenbelt Trail

Conceptual Plan

Boston Greenbelt Trail (proposed) —

Regional facilities

Regional Greenway (proposed) —

Regional walking trail (proposed) —

Proposed Existing

Shared-use paths

Improved path —

Unimproved path —

Walking facilities

Walking path or trail —

— Municipal boundary
— Water body
— Open space

Data Sources: MAPC, MassGIS, MassDOT

February, 2014

0 1,000 Feet

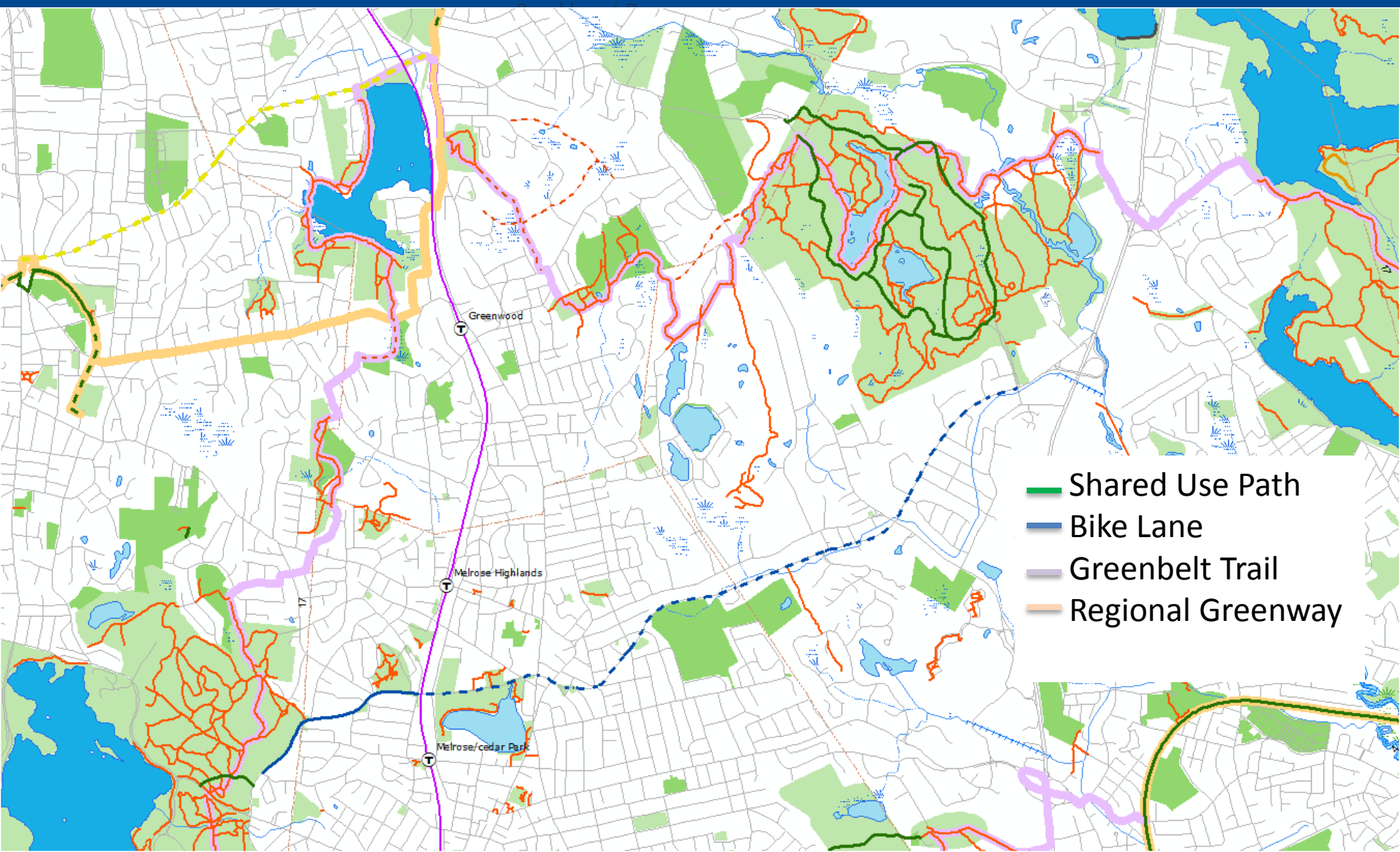


BOSTON GREENBELT Walk – May 2014



<http://www.bostongreenbeltwalk.org/>

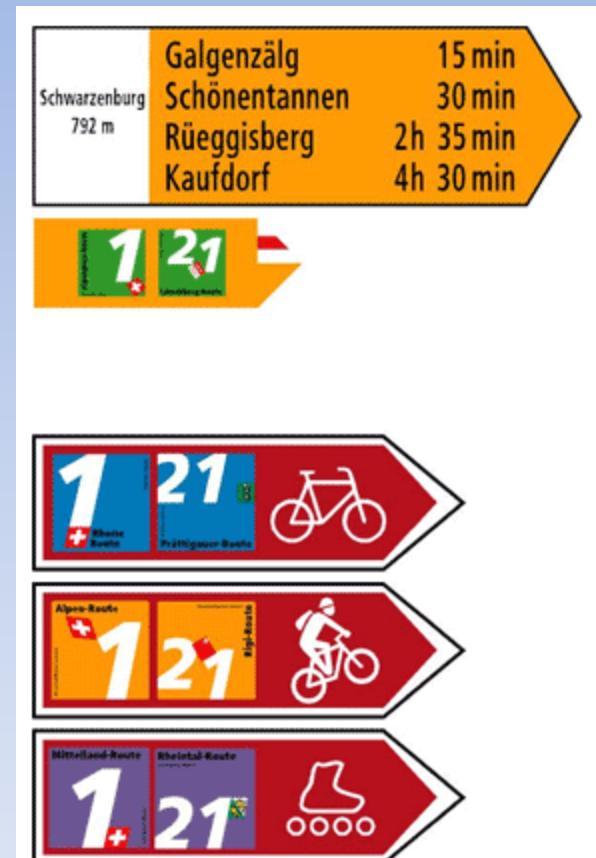
Proposed Greenbelt – Fells to Lynn Woods



BRANDING AND WAYFINDING



- Developing a logo
- Developing signage standards



GREENWAY VISION NEXT STEPS



- Unveil System Brand/Logo – January 2015
- Revised/Expand Vision Map – ongoing
- Develop signage standards – 2015
- Present to cities/towns for adoption – late 2015
- Present to Baker administration – 2015
- Present to other groups, elected officials - ongoing