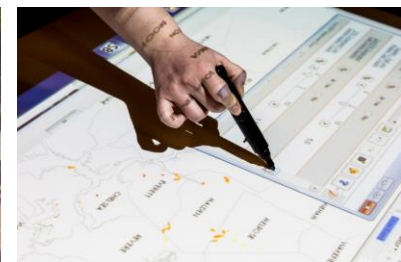
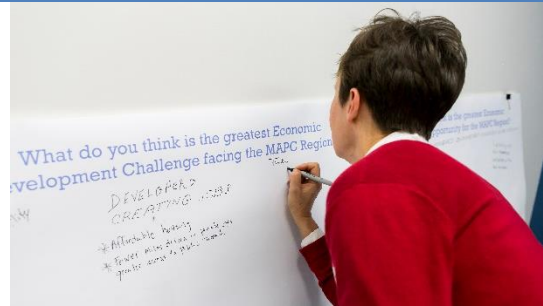


# Comprehensive Economic Development Strategy 2015-2020

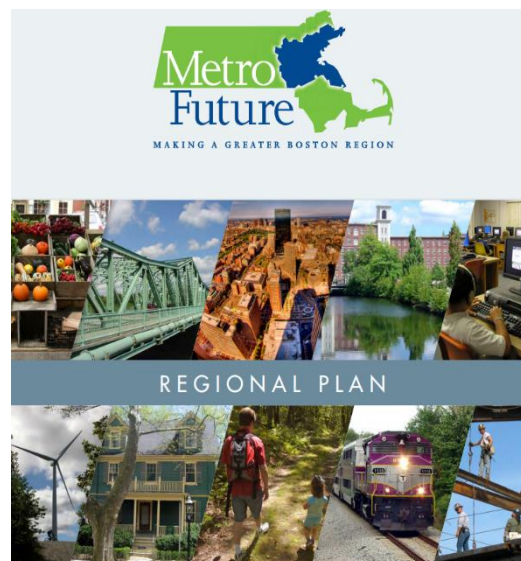


# CEDS: Background



# What is the CEDS?

- Regional Economic Development Plan
- Keeping MetroFuture Up to Date
- Response to Regional Prosperity Indicators
- Required EDA Document



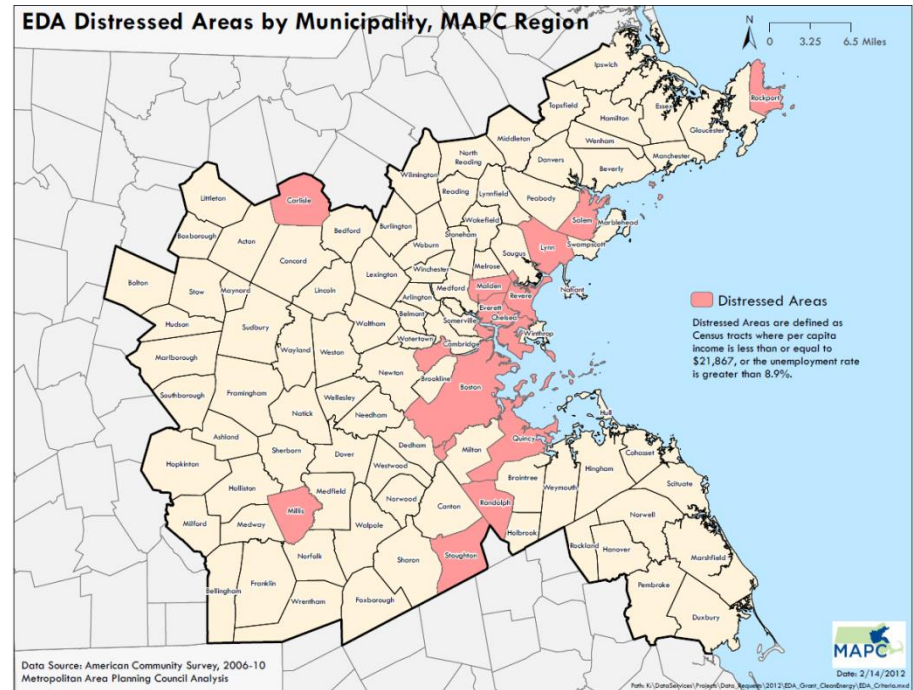


# What's Included

- Economic Conditions in the Region
- Regional Strengths, Weaknesses, Opportunities, and Threats Analysis
- Strategic Direction and Action Plan
- Evaluation Framework

# Economic Development District

- Contains one geographic area that is subject to economic distress criteria.
- Sufficient size and population with sufficient resources to foster economic development on a regional scale.
- Has an EDA approved CEDS.



# Economic Development District in Action

- N2 Innovation Corridor
- Venture Development Center
- The New Maritime Port Economy in Gloucester



# CEDS: SWOT Analysis





# SWOT Analysis



## CEDS Survey

### Comprehensive Economic Development Strategy

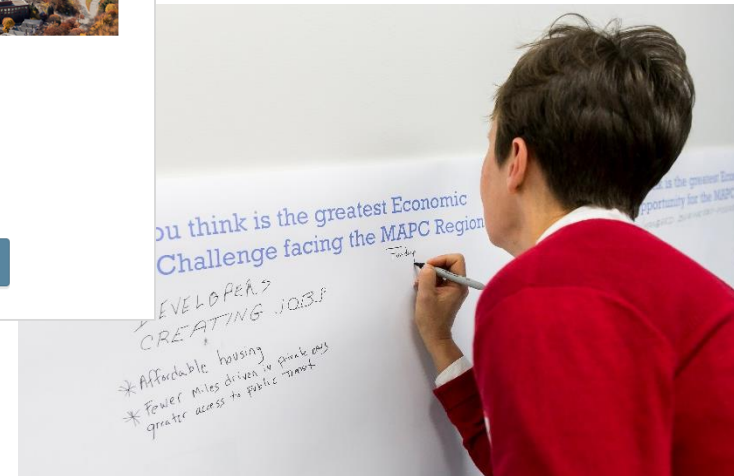
As the regional planning agency for Greater Boston, the Metropolitan Area Planning Council (MAPC) is working on a [Comprehensive Economic Development Strategy \(CEDS\)](#). The CEDS outlines strategies to strengthen the regional economy over the next five years. Your input, as a professional working in economic development or a related field, is respectfully requested. Please feel free to skip any questions that you do not feel adequately equipped to answer.

The survey should take no longer than 10-15 minutes and responses will be taken through **5 PM on April 30th**.

For more information on MAPC and the region that we serve please click [here](#).



Next





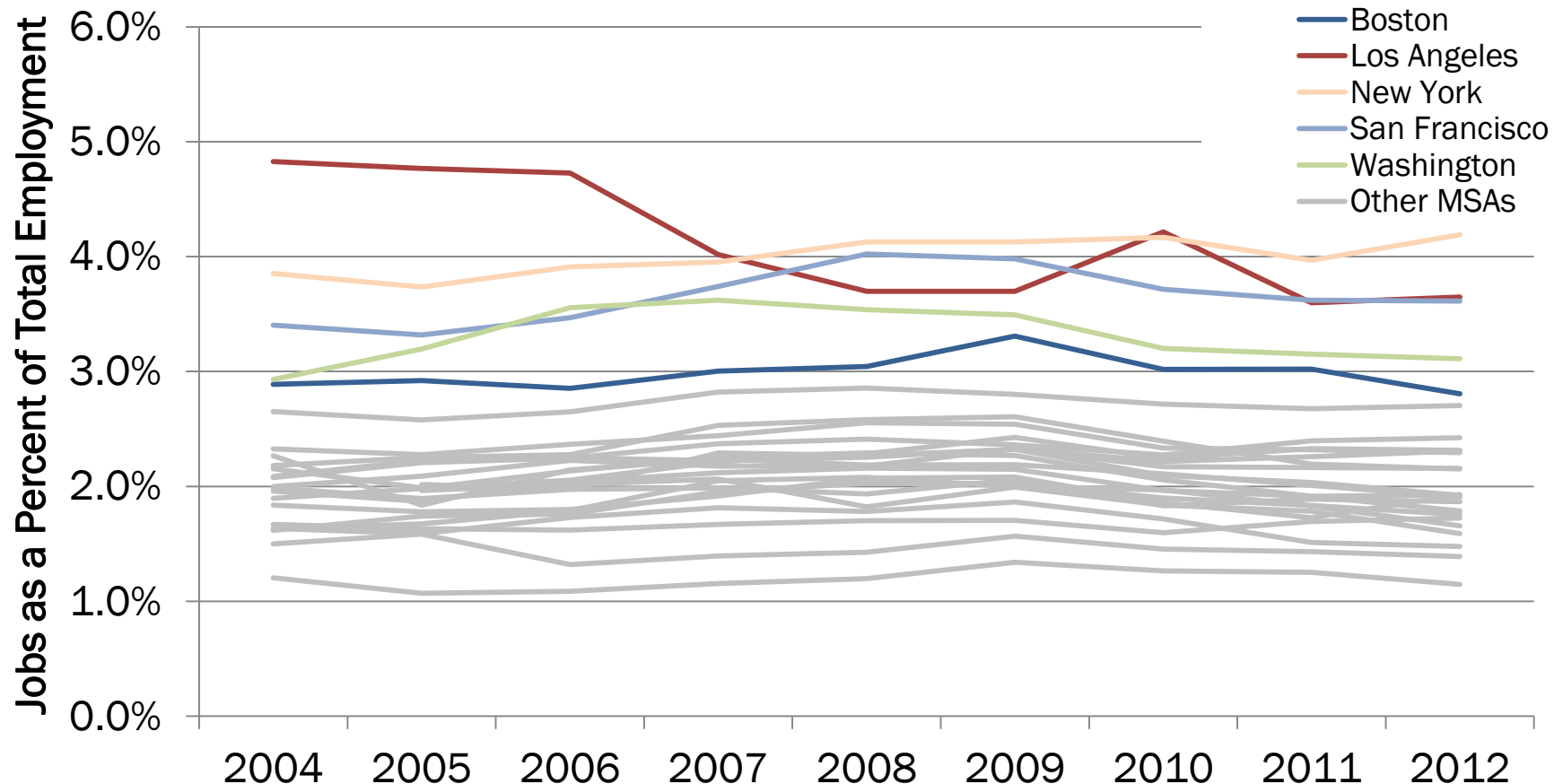


# CEDS Highlights



# Creative Economy

Jobs in the Creative Class as a Percent of Total Employment



Source: Regional Prosperity Indicators, Bureau of Labor Statistics, Occupational Employment Statistics (OES) Survey, 2004-2012

# Creative Economy

- Place-making efforts & technical assistance to foster and encourage the arts.
- Funding opportunities linked to programs that encourage arts, such as cultural district designations.
- Creation of non-traditional work space.

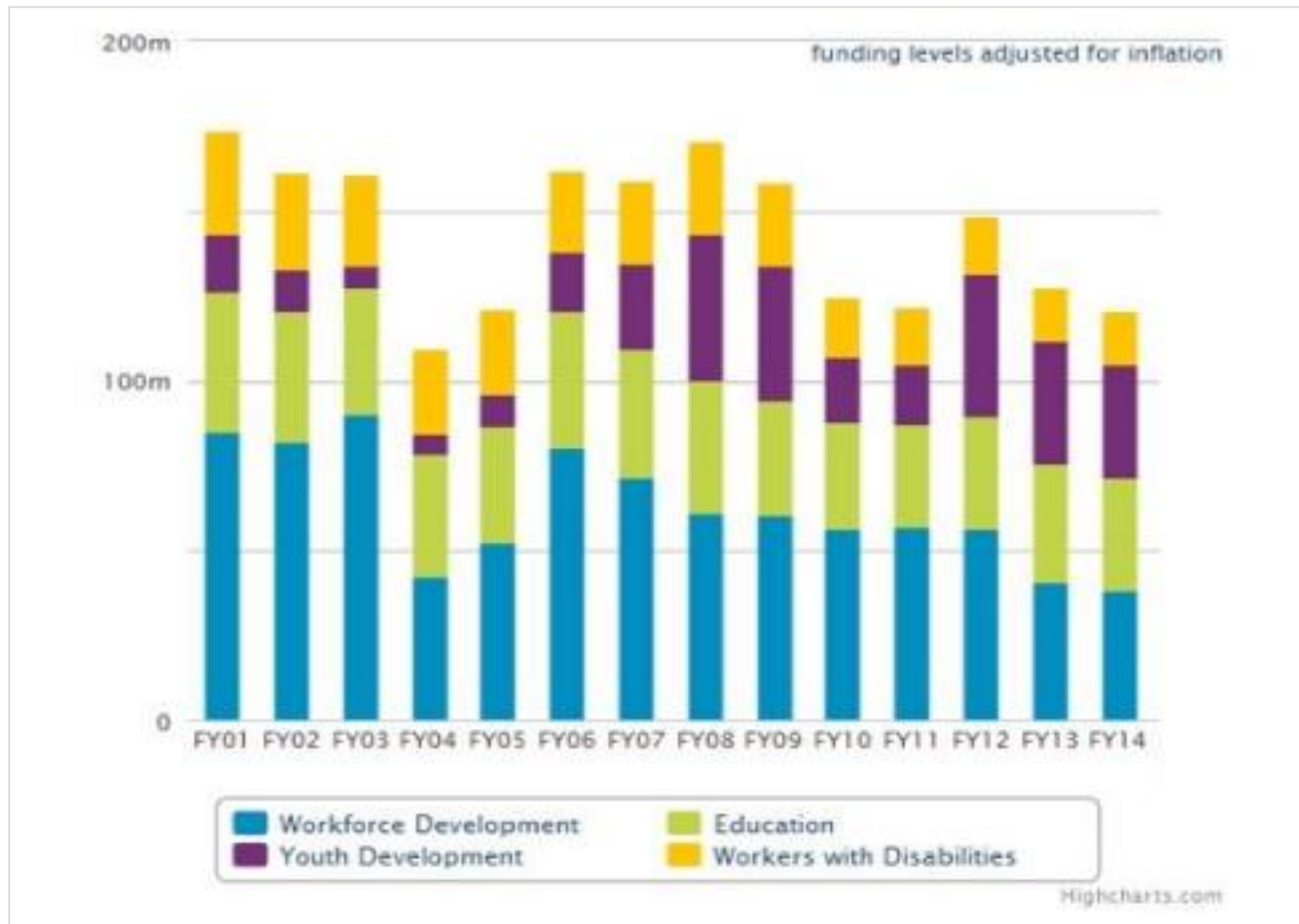


# Small Business

- An Act relative to Parking Advancement for the Revitalization of Communities
- An Act Relative to Creating Community Benefit Districts (CBDs).
- Municipal level policies & programs to assist small business owners.
- Targeted outreach to communities with a large number of small businesses, especially immigrant entrepreneurs, to make them aware of opportunities to access capital.
- Mitigation of small business displacement.



# Workforce Development



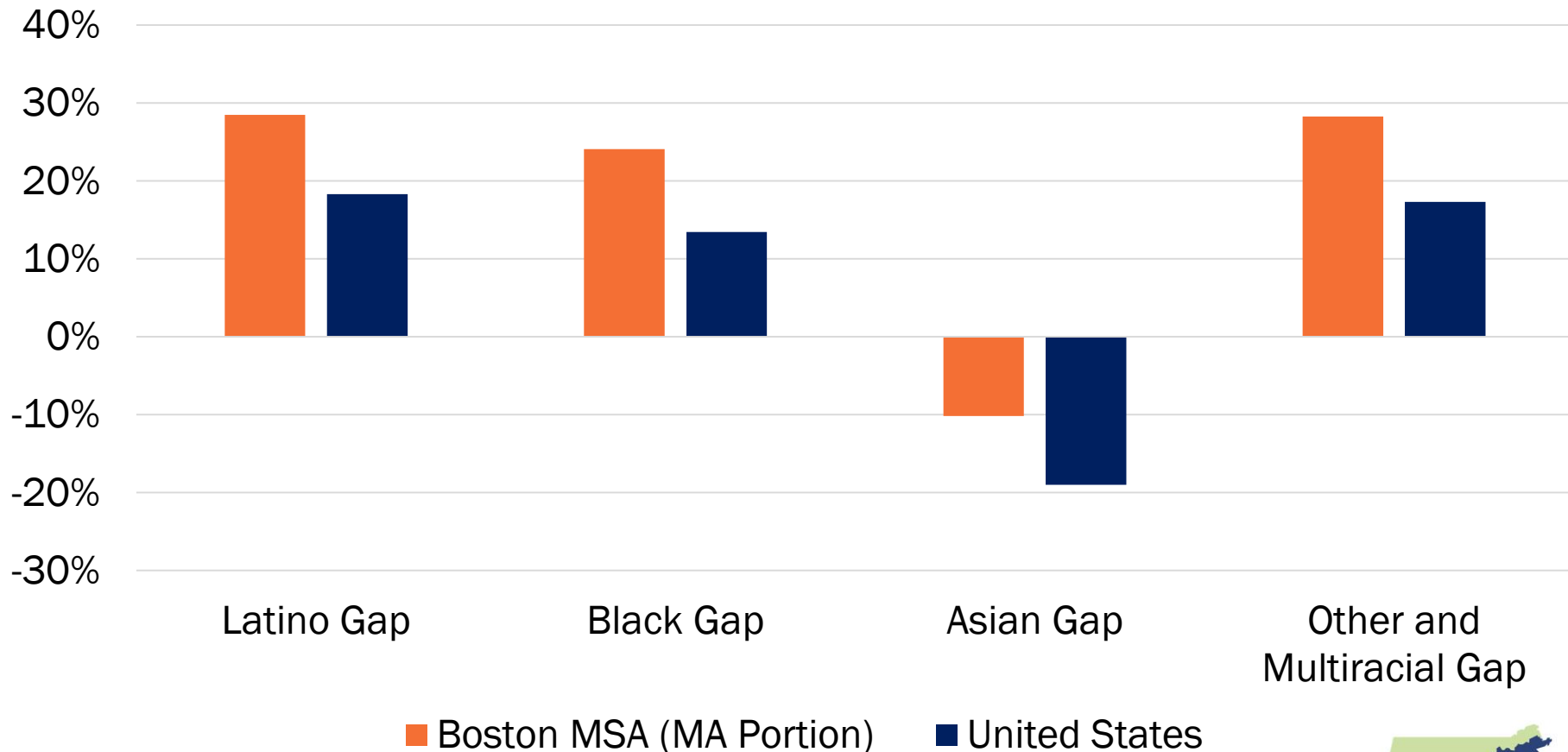
Source: MassBudget, 2014

# Workforce Development

- Workforce Competitiveness Trust Fund and the Massachusetts High-Demand Scholarship Program.
- Education of students in high demand fields and fields that have successfully placed graduates in jobs.
- Learn and Earn programs, internships, on-the-job training, and apprenticeship programs.
- Non-profit bundled services (i.e., workforce development, housing services, financial planning).

# An Equitable Economy

Bachelors Degree or Higher Attainment Gap for Adults of Color Compared to White Adults



Source: Regional Indicators, ACS 2008-2012 5 Year Data, PUMS 2000 & 2007-2011, ACS 5 Year Data





# An Equitable Economy

- Greater access to high-quality preschool education.
- Breaking the link between residential segregation and unequal educational opportunities.
- More progressive tax structure.
- Quality jobs with fair wages & benefits, especially within Leisure & Hospitality
- Adequate and affordable housing production & preservation.

# Commercial & Housing Development in Smart Growth Locations

- Development-ready sites in appropriate locations
- State investments reflective of Commonwealth's Sustainable Development Principles and Priority Development & Preservation Mapping.
- Legislative changes that promote smart growth.



# A Resilient Economy



- Diversify the region's core industries.
- Focus on growth in clean energy & clean tech, manufacturing & advanced manufacturing, maritime commerce opportunities, and local agriculture.
- Implementation of Regional Climate Adaptation Strategy.
- Risk management & disaster preparedness resources and training to small businesses.
- Business diversification of products and/or service delivery.

# Next Steps

- Work through our project & policy work to advance goals & strategies of CEDS.
- Stay actively involved in the preparation of the Commonwealth's Economic Development Plan.
- Explore re-convening groups of interested stakeholders to advance key CEDS strategies and action items.
- Continue to assist with EDA funding proposals throughout the region to ensure consistency with goals & strategies as outlined in the CEDS
- Presentations throughout the region to increase awareness of CEDS.
- Evaluate and monitor our progress in achieving the goals of the CEDS



# Questions?

Amanda Chisholm, AICP  
Regional Planner II  
Metropolitan Area Planning Council  
[achisholm@mapc.org](mailto:achisholm@mapc.org)  
617-933-0736