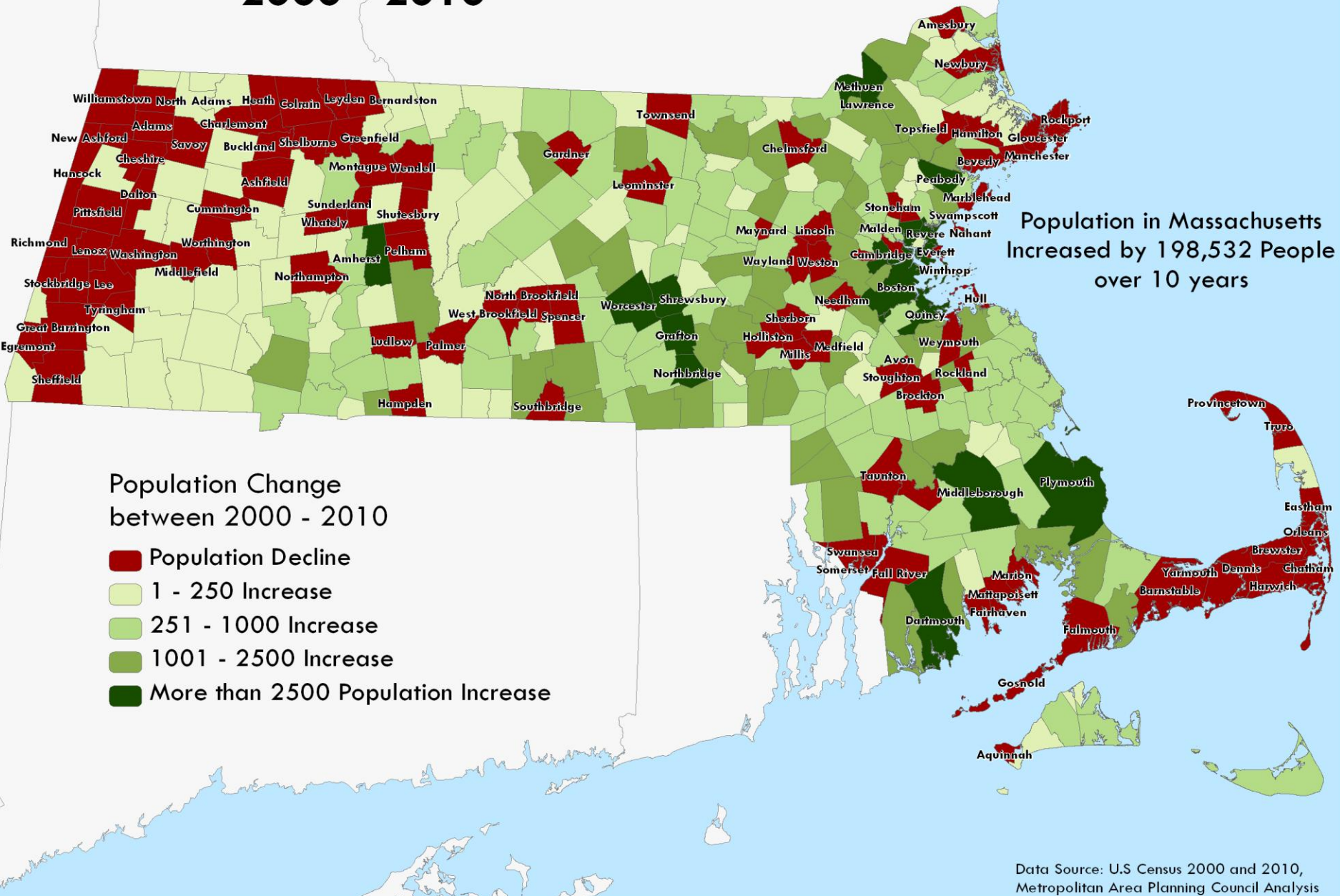
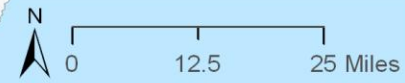


Metro Boston Census Data Trends: Inner Core Communities

Jamila Henderson, Research Analyst
Data Services Department
Metropolitan Area Planning Council
December 7, 2011



Massachusetts Population Change 2000 - 2010



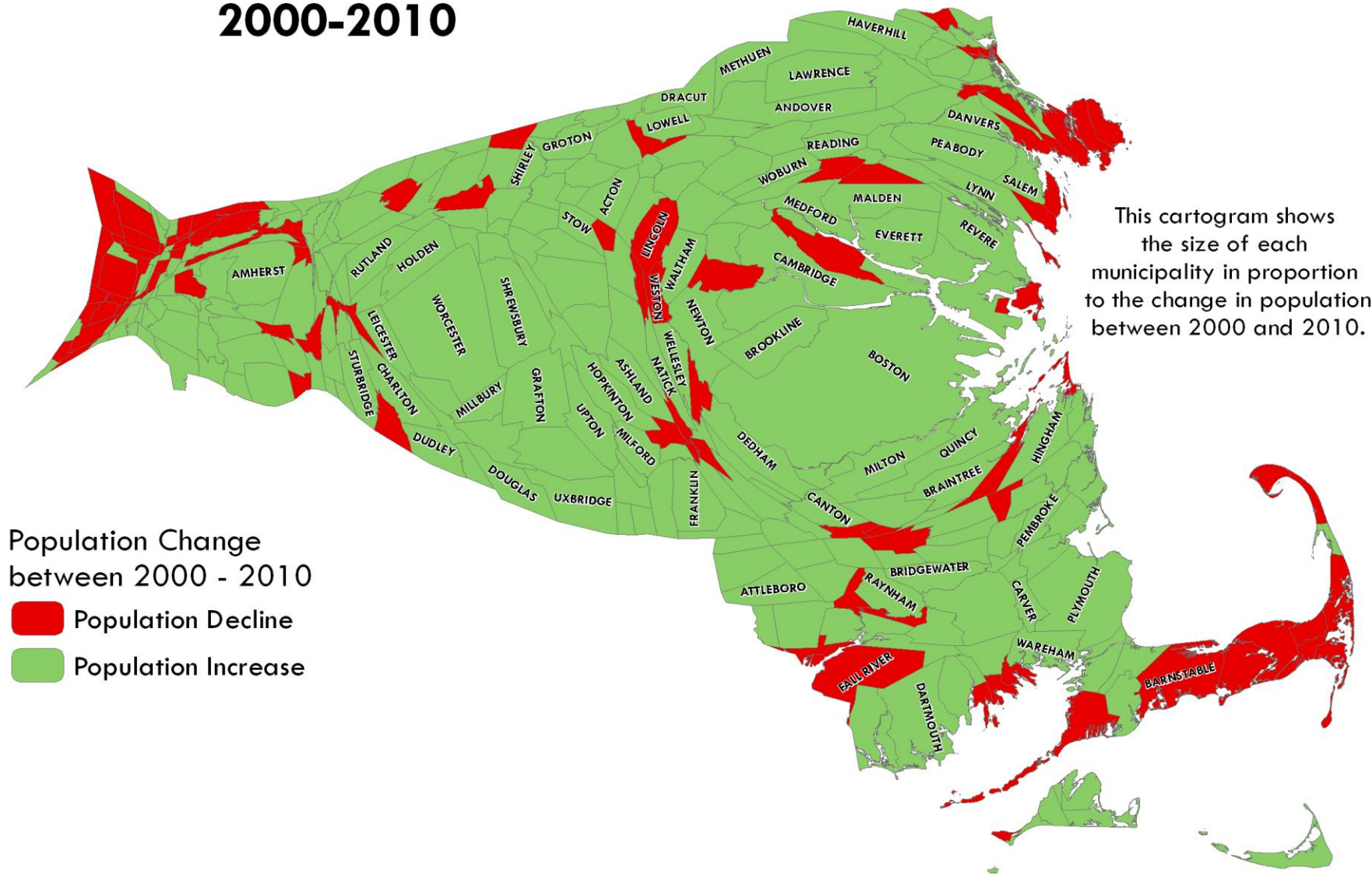
Population in Massachusetts
Increased by 198,532 People
over 10 years

Population Change between 2000 - 2010

- Population Decline
- 1 - 250 Increase
- 251 - 1000 Increase
- 1001 - 2500 Increase
- More than 2500 Population Increase

Massachusetts Population Change 2000-2010

N
0 12.5 25 Miles



Population

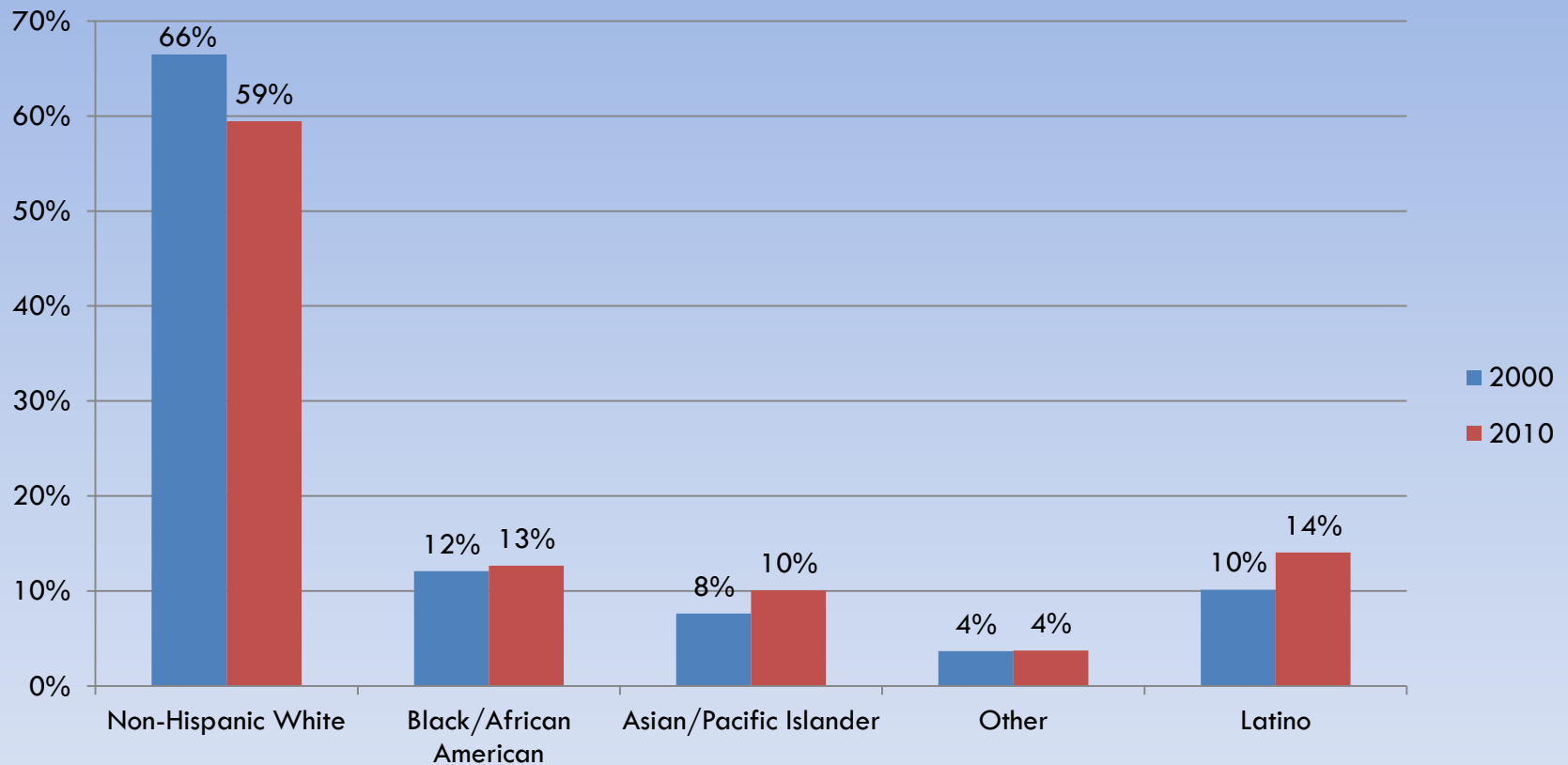


	<u>2000</u>	<u>2010</u>	<u>% Change</u> <u>2000-2010</u>
Massachusetts	6,349,097	6,547,629	3.1%
Metro Boston (MAPC)	3,066,394	3,161,712	3.1%
Inner Core	1,574,862	1,627,441	3.3%

Where are regional population gains coming from?



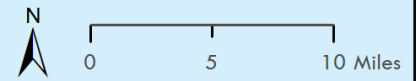
Inner Core Population by Race/Ethnicity, 2000-2010



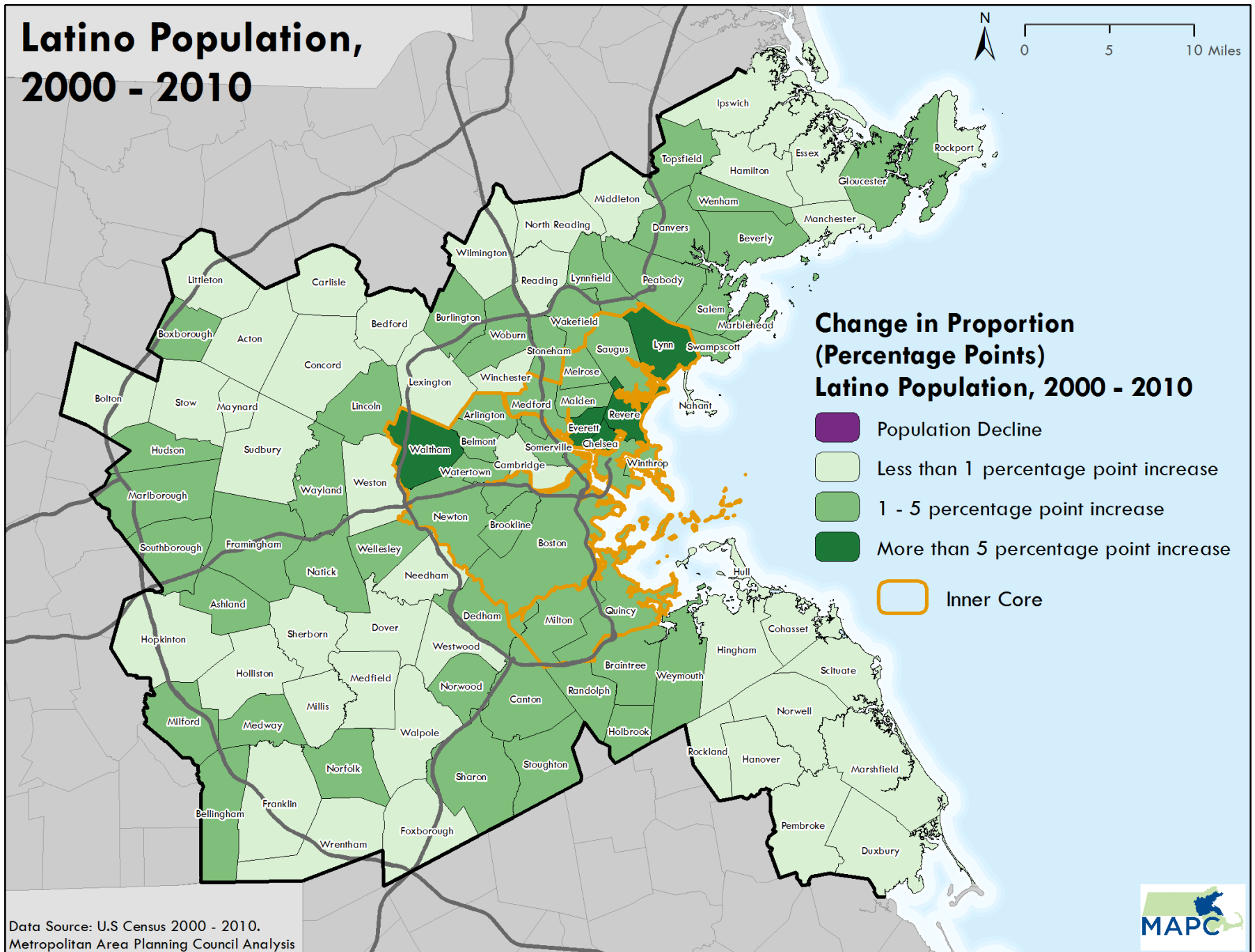
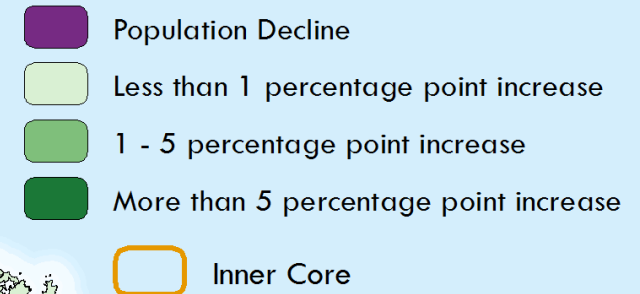
Note: White, Black/African, Asian and other races exclude Hispanic/Latino.

Source: Census 2000 and 2010.

Latino Population, 2000 - 2010

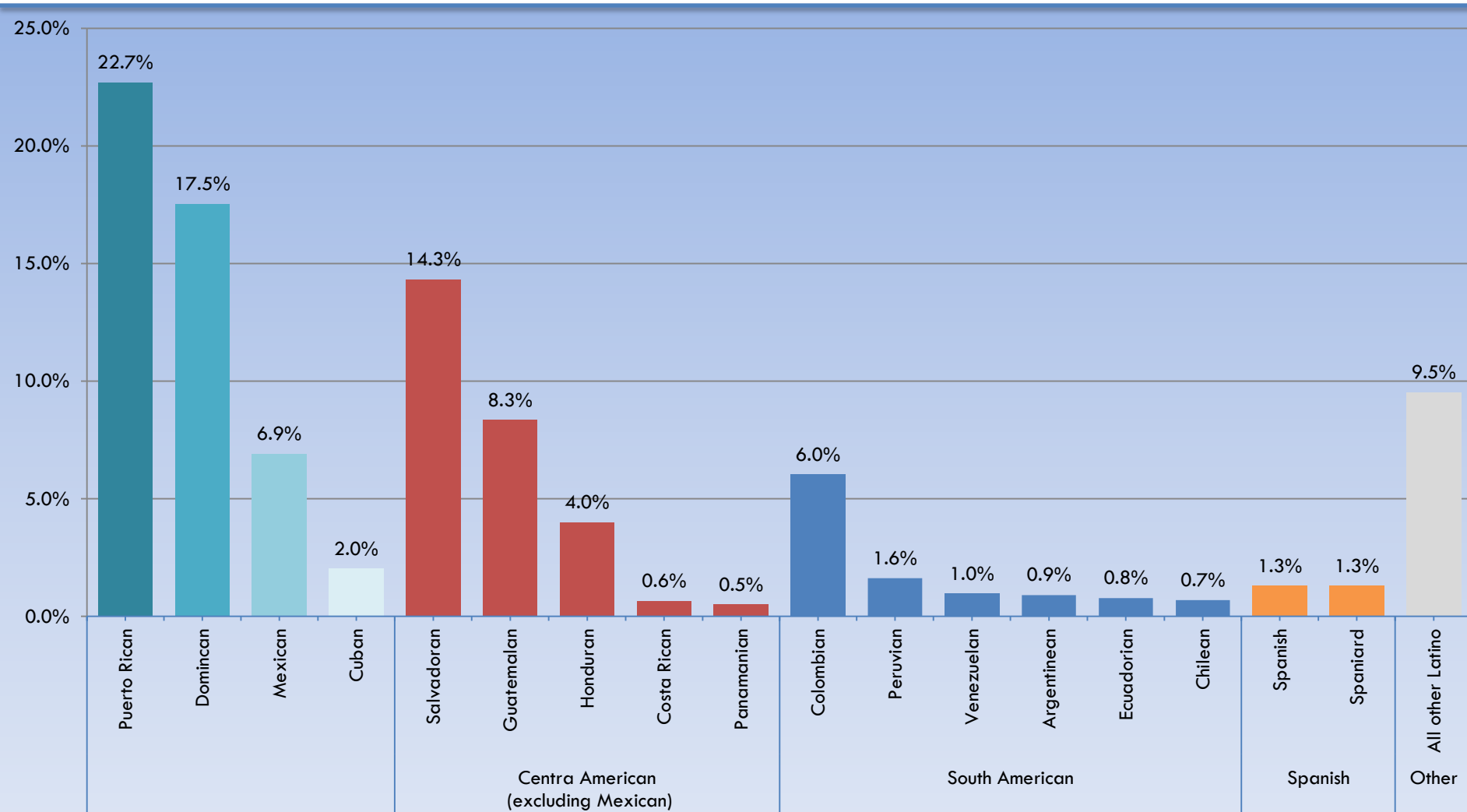


Change in Proportion (Percentage Points) Latino Population, 2000 - 2010

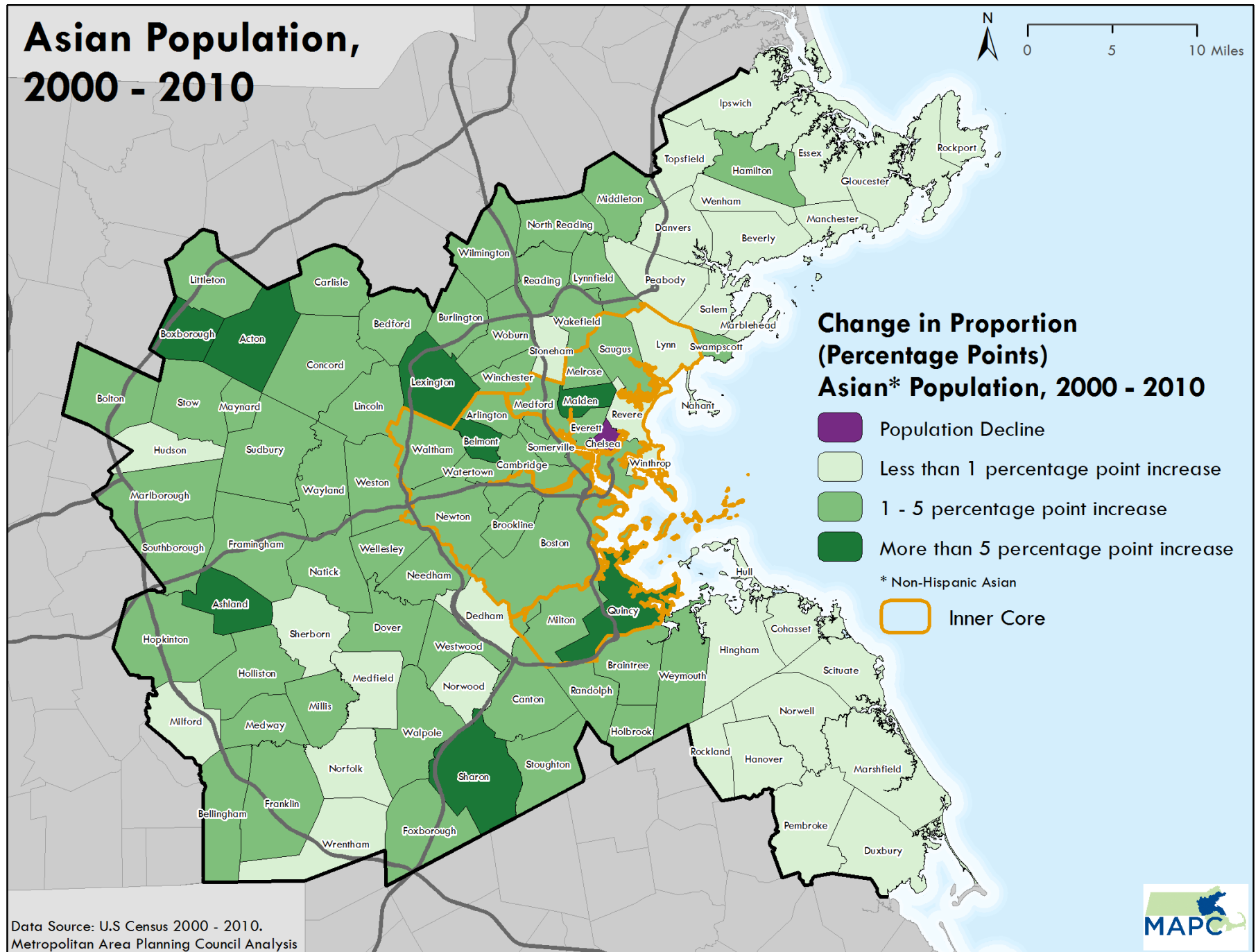


Data Source: U.S Census 2000 - 2010.
Metropolitan Area Planning Council Analysis

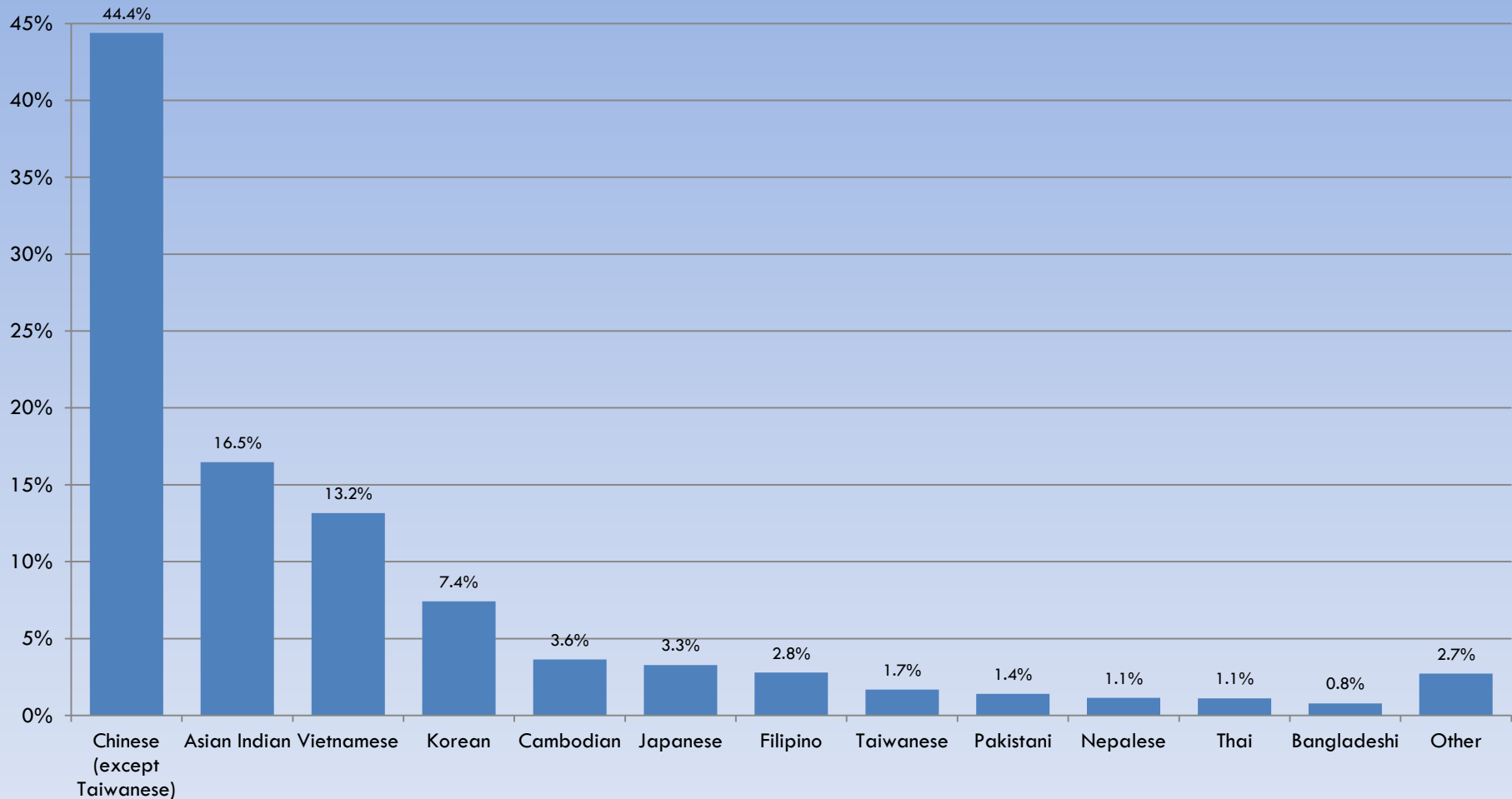
Inner Core Latino Population, 2010



Asian Population, 2000 - 2010

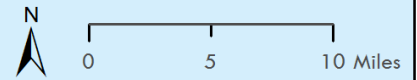


Inner Core Asian Population, 2010



Notes: Includes individuals who specify Asian alone.
Source: Census 2010, Inner Core Communities, MA.

Black/African American Population, 2000 - 2010

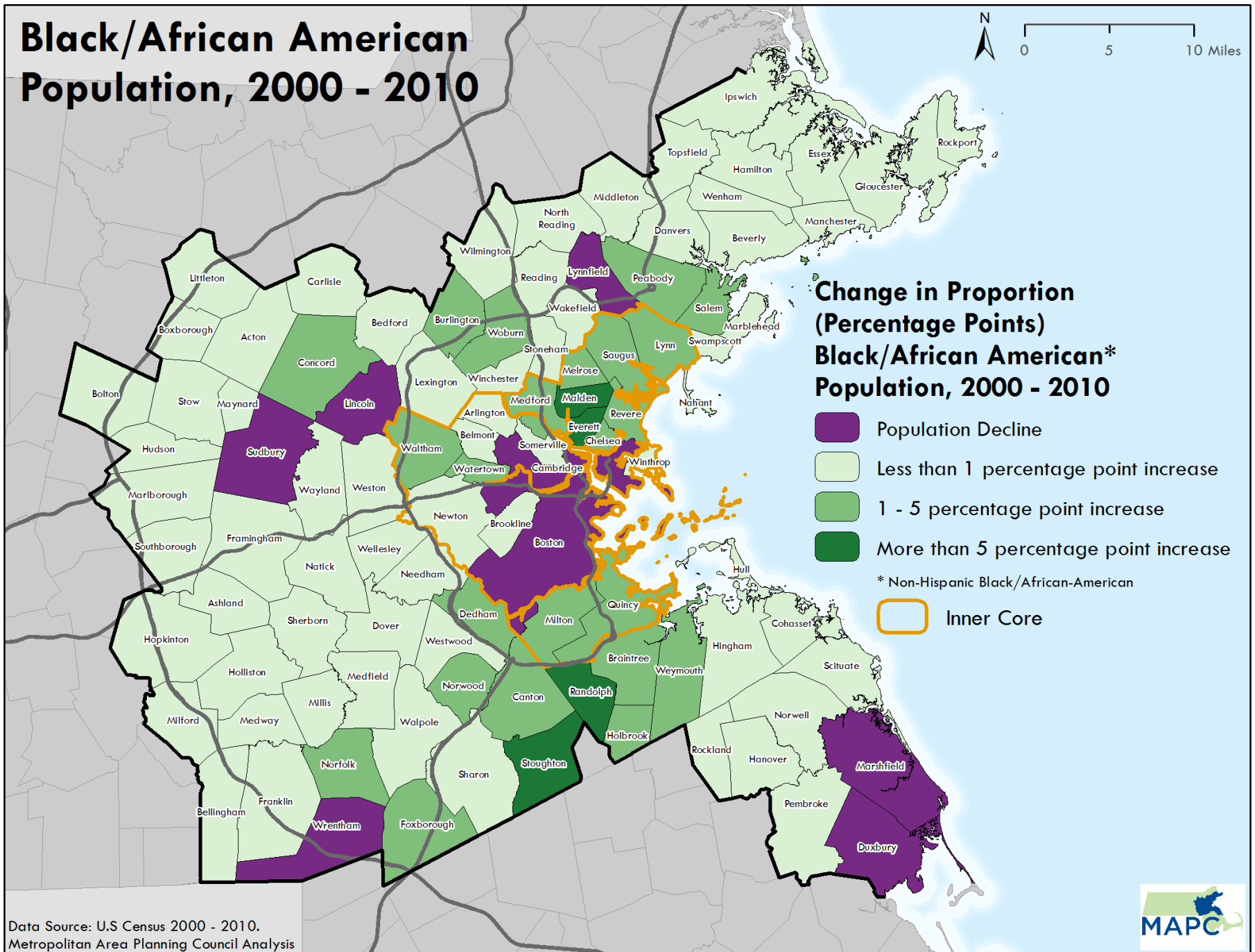


Change in Proportion (Percentage Points) Black/African American* Population, 2000 - 2010

- Population Decline
- Less than 1 percentage point increase
- 1 - 5 percentage point increase
- More than 5 percentage point increase

* Non-Hispanic Black/African-American

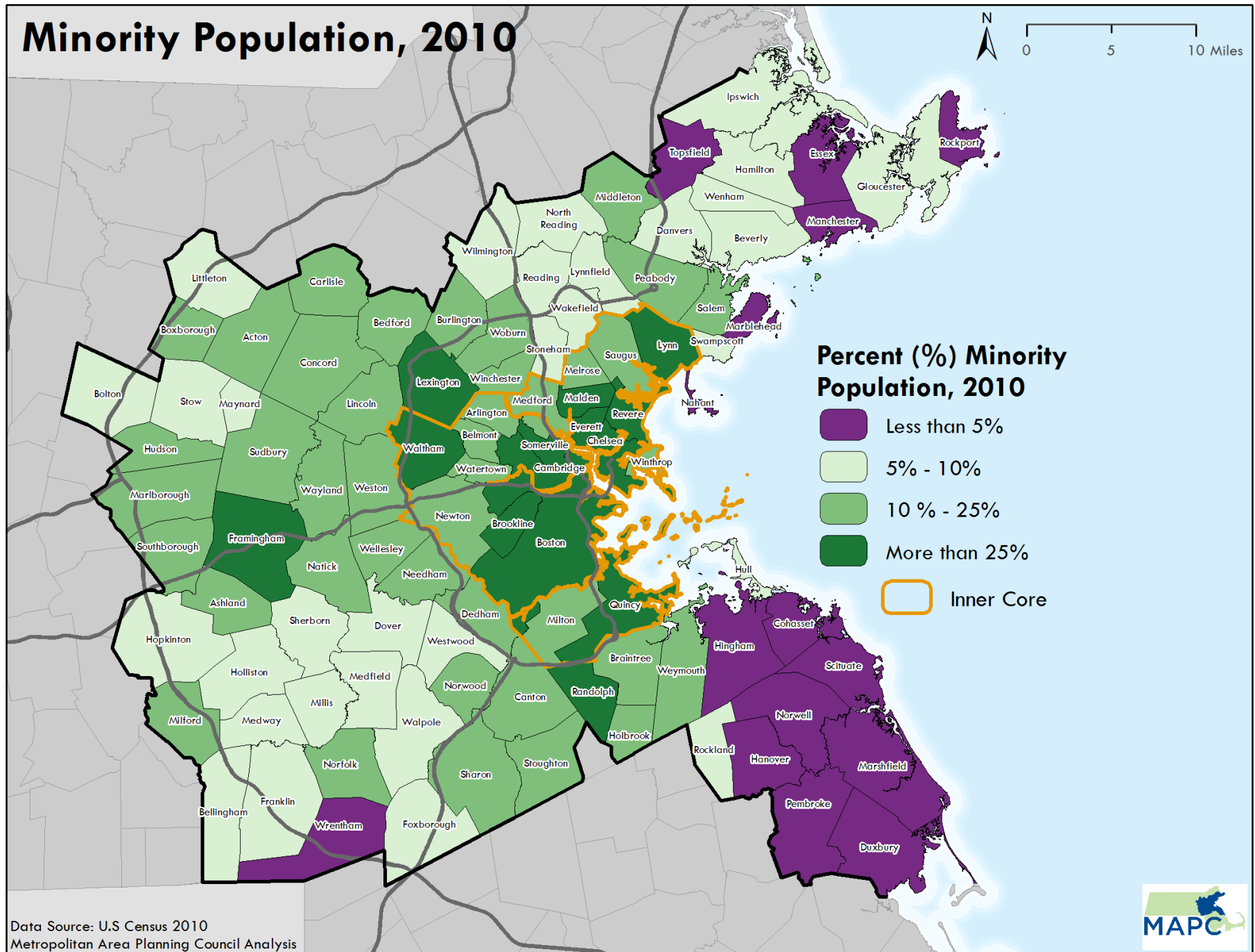
Inner Core



Data Source: U.S Census 2000 - 2010.
Metropolitan Area Planning Council Analysis

Minority Population, 2010

N 0 5 10 Miles



2010 “Majority Minority” Communities in the MAPC Region

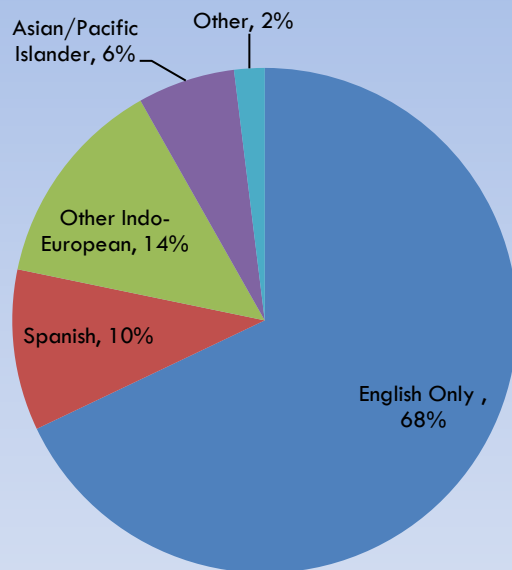


Rank	City or Town	Racial/Ethnic Minority Population (%), 2000	Racial/Ethnic Minority Population (%), 2010
1.	Chelsea	61.7%	74.8%
2.	Randolph	38.5%	60.9%
3.	Boston	50.5%	53.0%
4.	Lynn	37.5%	52.4%

Language Spoken at Home



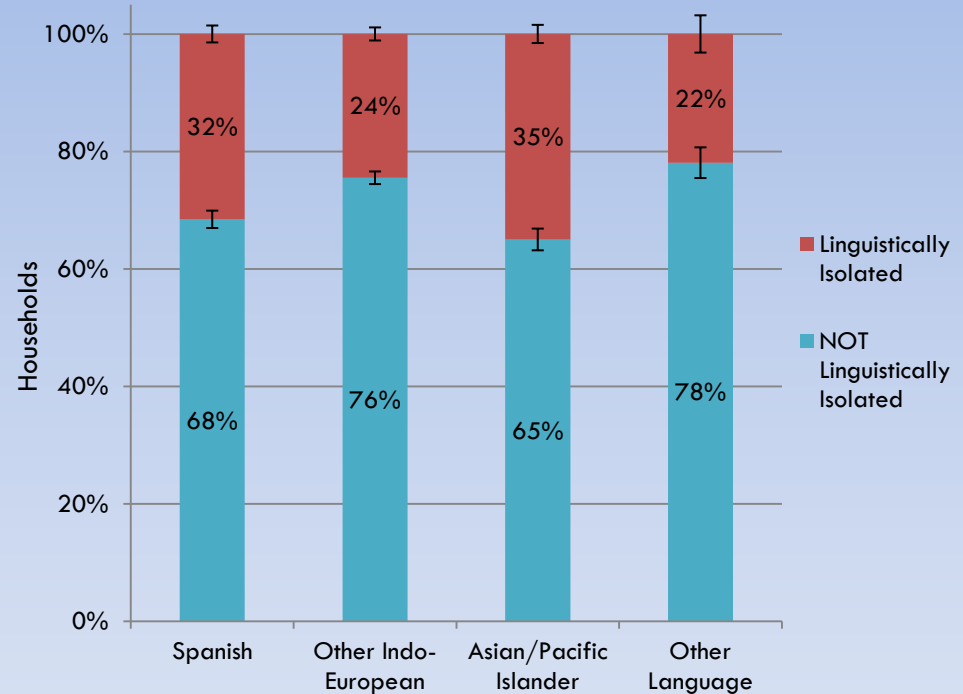
Language Spoken at Home, Inner Core



Black bars indicate 90% confidence interval.

Source: American Community Survey, 2005-09, Inner Core Communities, MA.

Language Spoken at Home by Linguistic Isolation, Inner Core



Black bars indicate 90% confidence interval. Linguistically isolated households are those in which no one 14 years and over speaks English very well.

Source: American Community Survey, 2005-09, Inner Core Communities, MA.

Linguistic Isolation, 2005 - 2009

% Households Speaking a Language Other than English at Home that are Linguistically Isolated

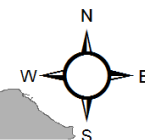
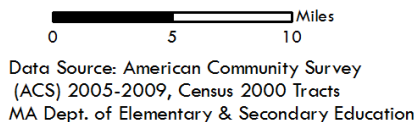
- Less than 10%
- 10% - 15%
- 15% - 25%
- 25% - 50%
- 50% or more

Regional Average

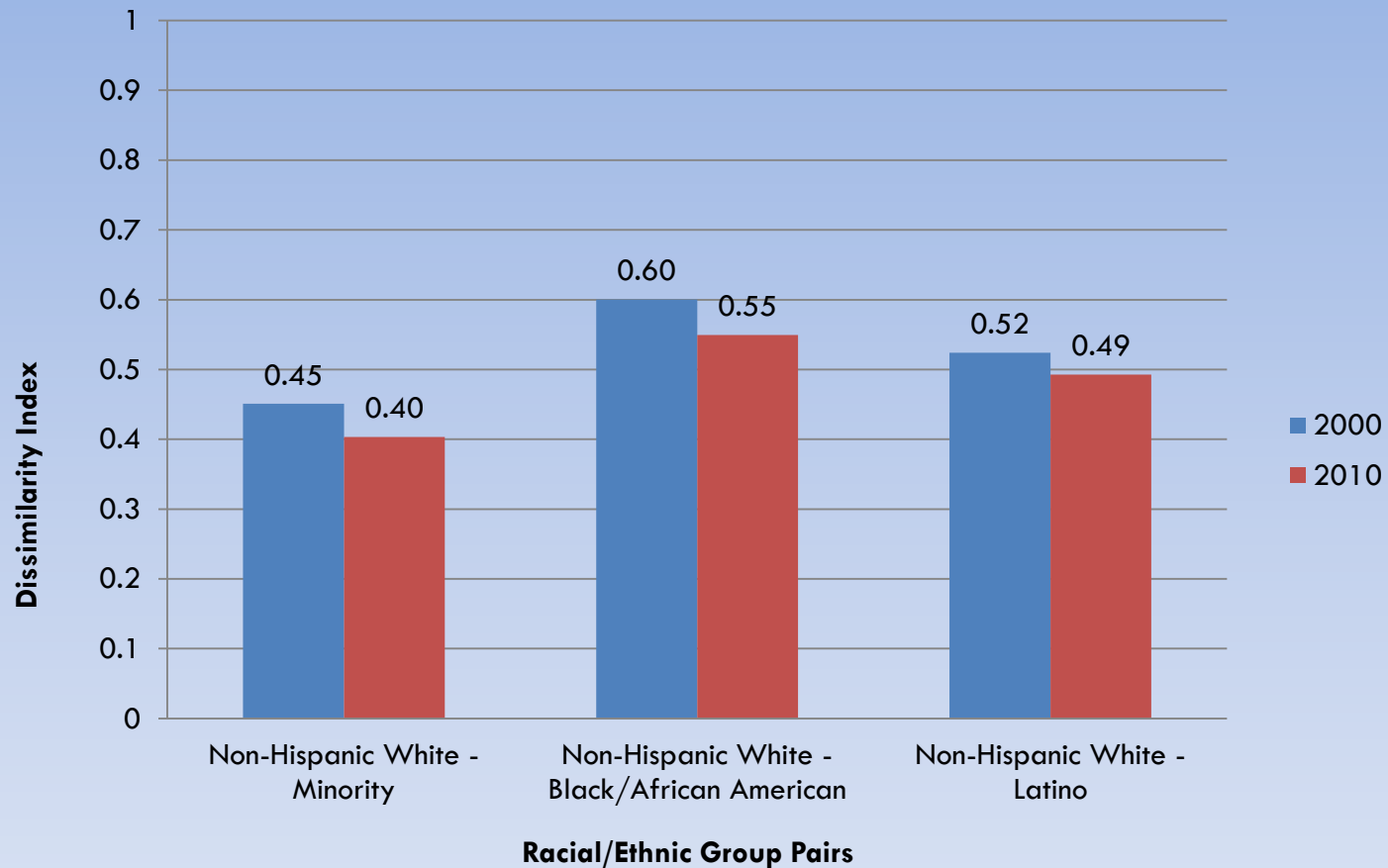
- Fewer than 100 non-English Speaking Households
- ESOL Class Sites
- Inner Core

Scale: 0 5 10 Miles

Data Source: American Community Survey (ACS) 2005-2009, Census 2000 Tracts
MA Dept. of Elementary & Secondary Education

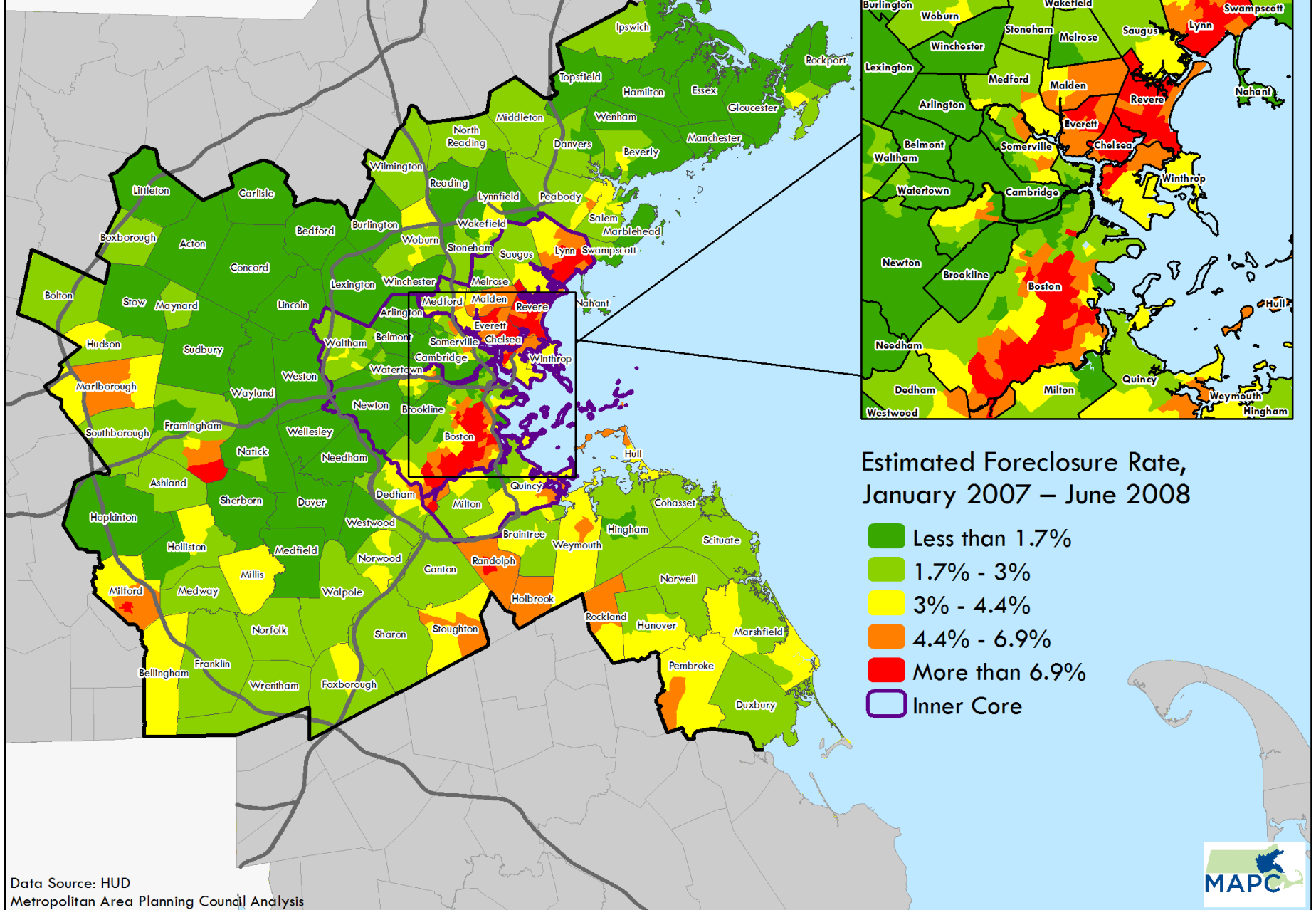


Municipal-Level Segregation, MAPC Region 2000 and 2010

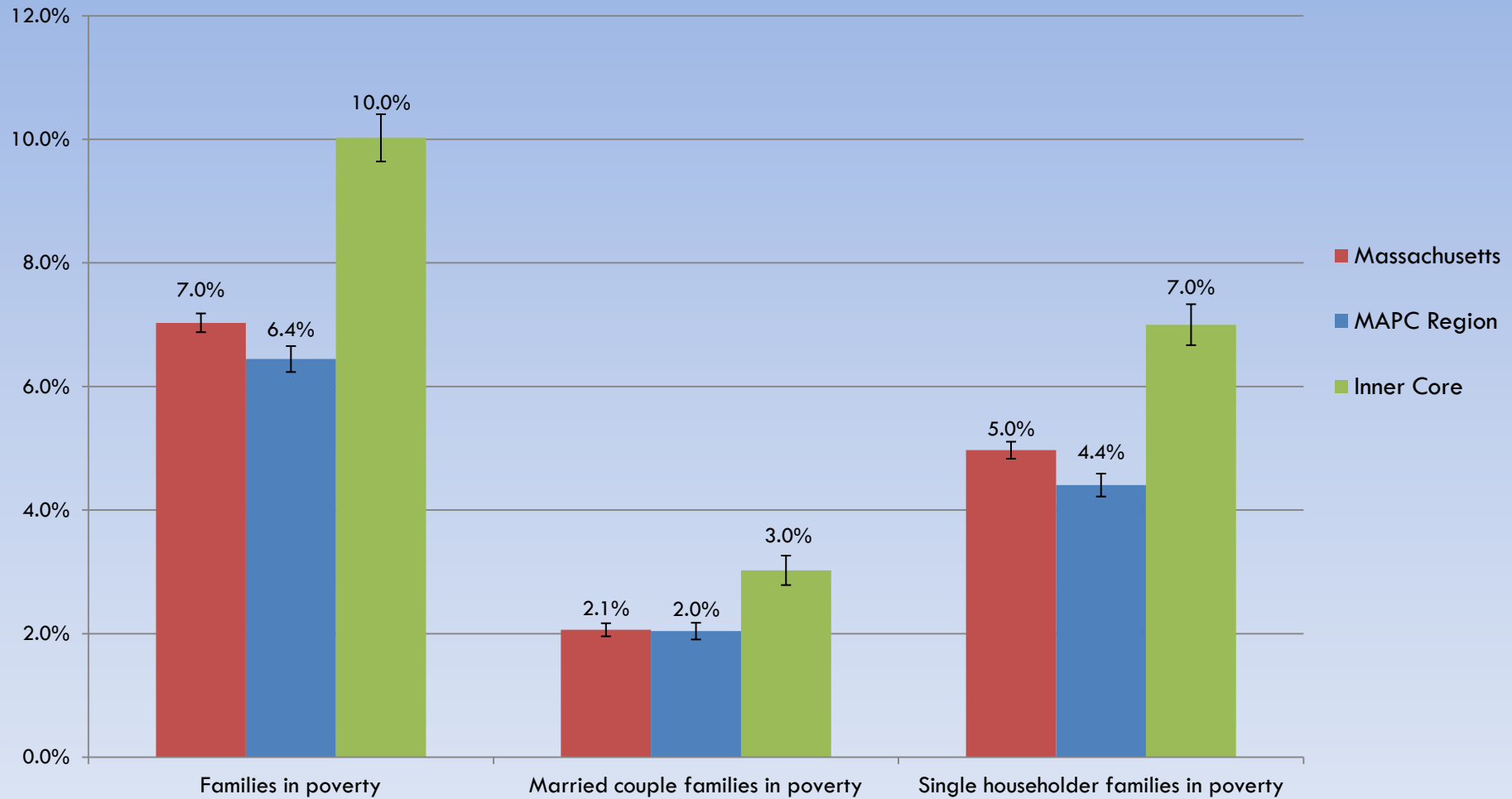


Note: White and Black/African exclude Hispanic/Latino.
Source: Census 2000 and 2010; MAPC Analysis.

Estimated Foreclosure Rate, Jan. 2007 – June 2008

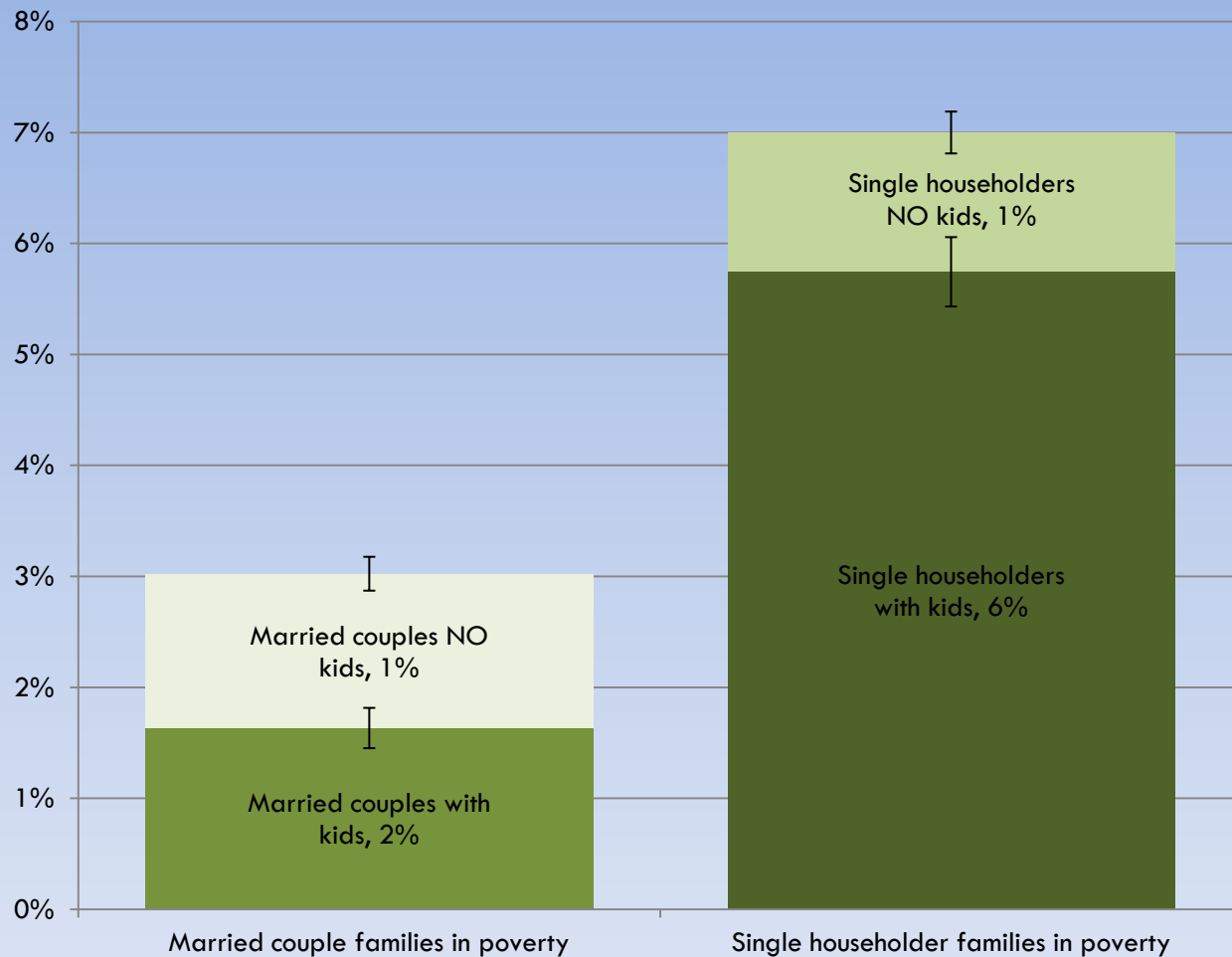


Families in Poverty



Black bars indicate 90% confidence interval.
Source: American Community Survey, 2005-09.

Inner Core Families in Poverty

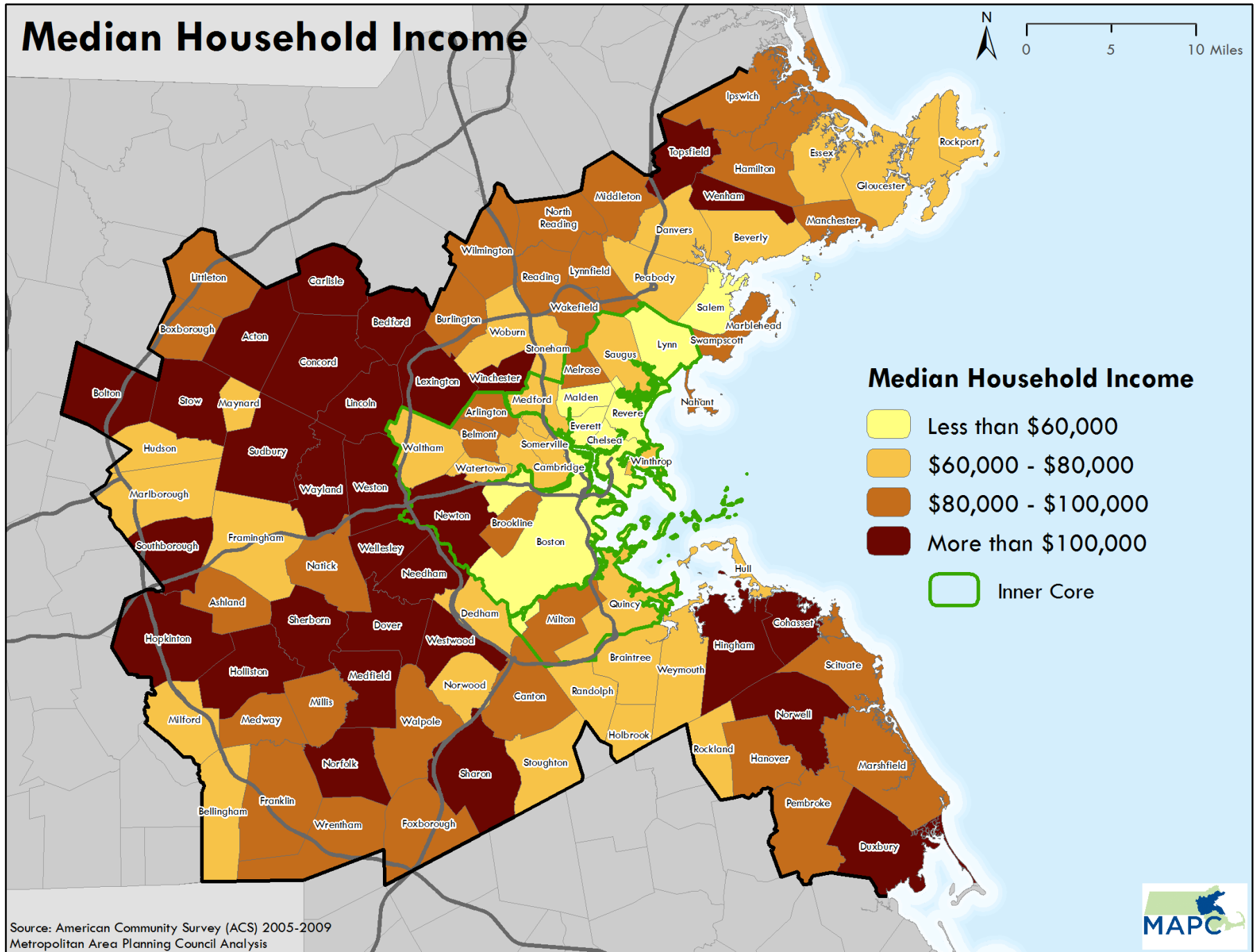
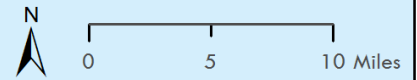


Black bars indicate 90% confidence interval.

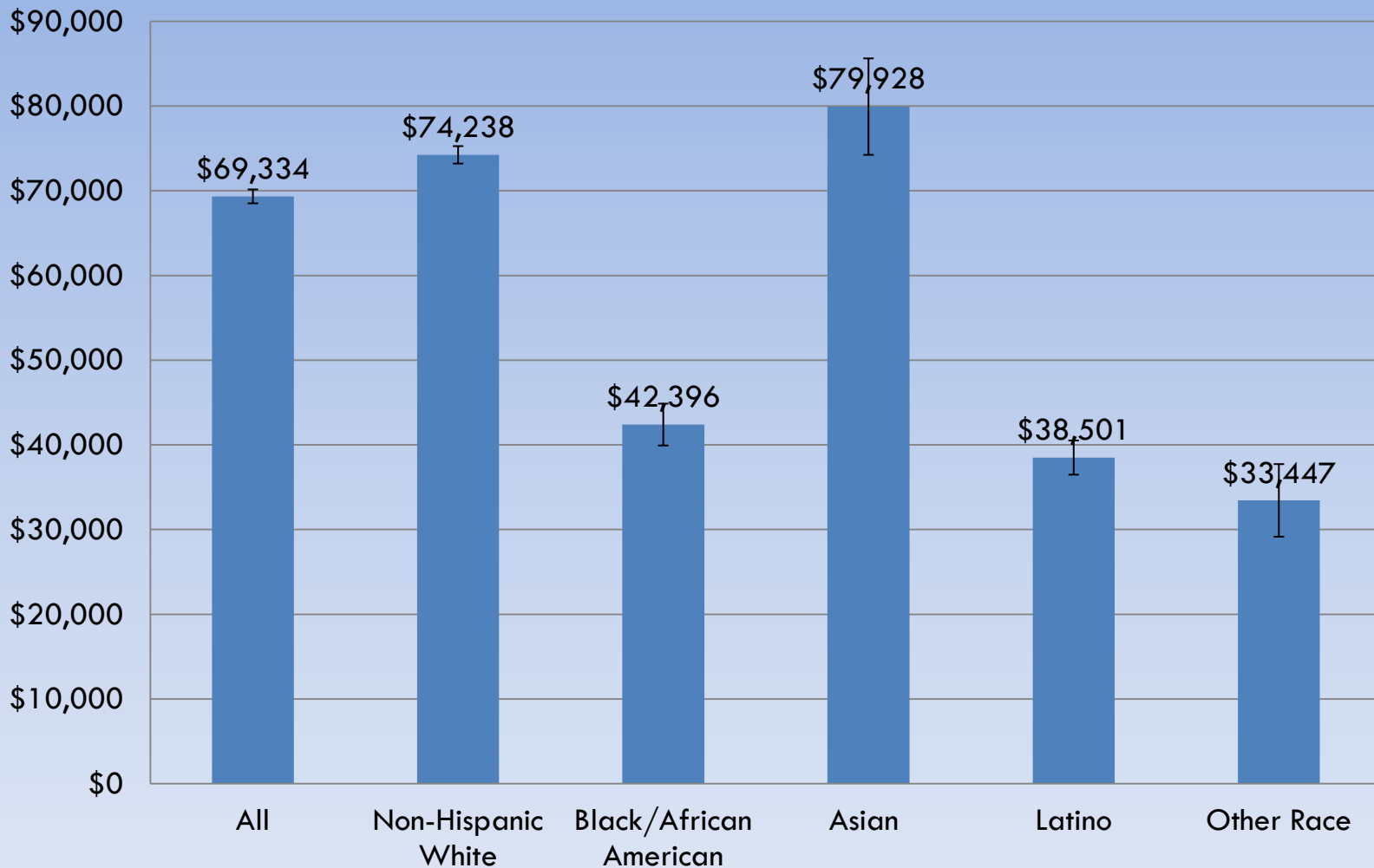
Source: American Community Survey, 2005-09, Inner Core Communities, MA.



Median Household Income



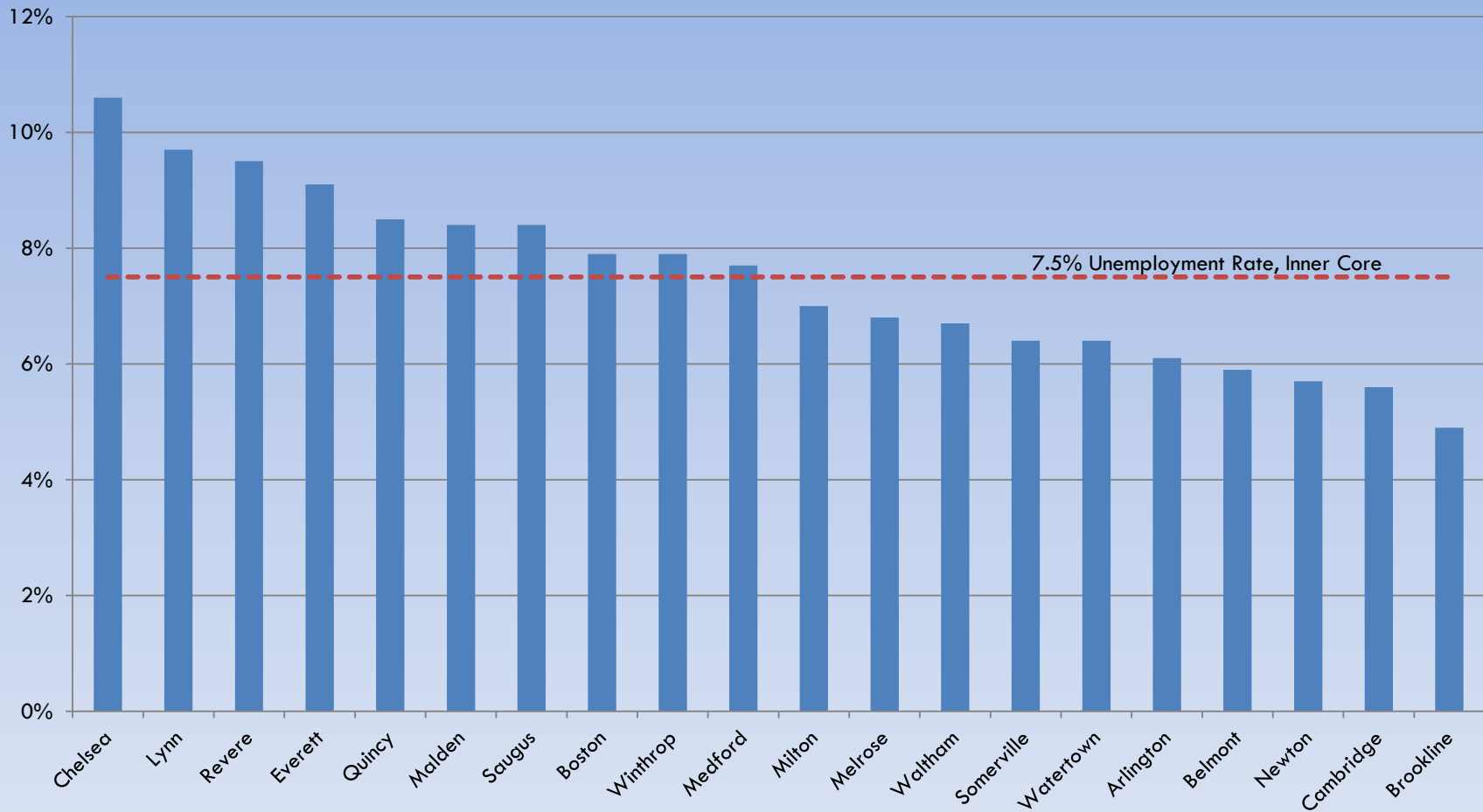
Median Household Income By Race/Ethnicity



Source: ACS 2009, 1-year MSA data.

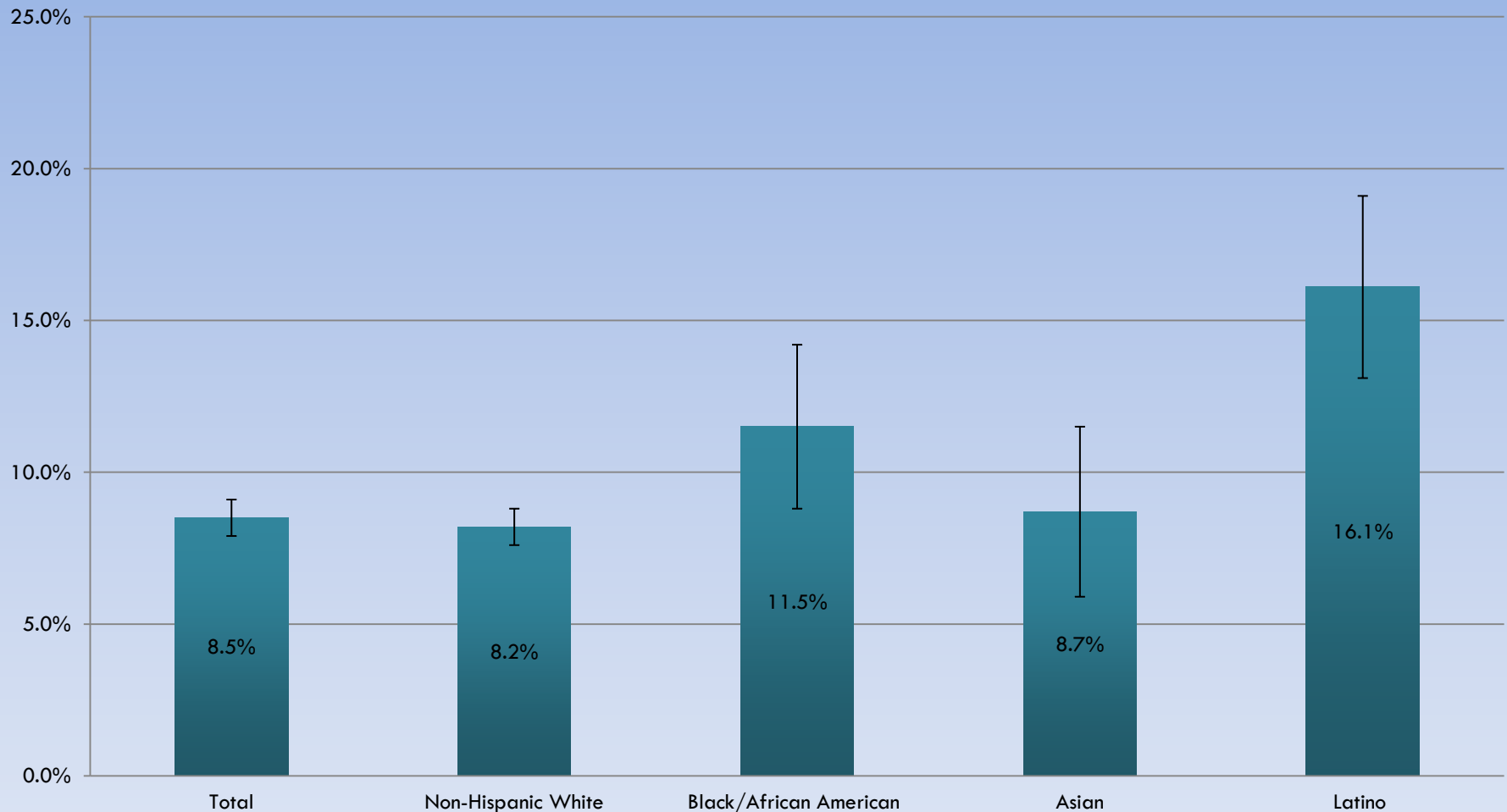
Note: Black bars indicate 90% confidence interval.

Unemployment Rate, 2010



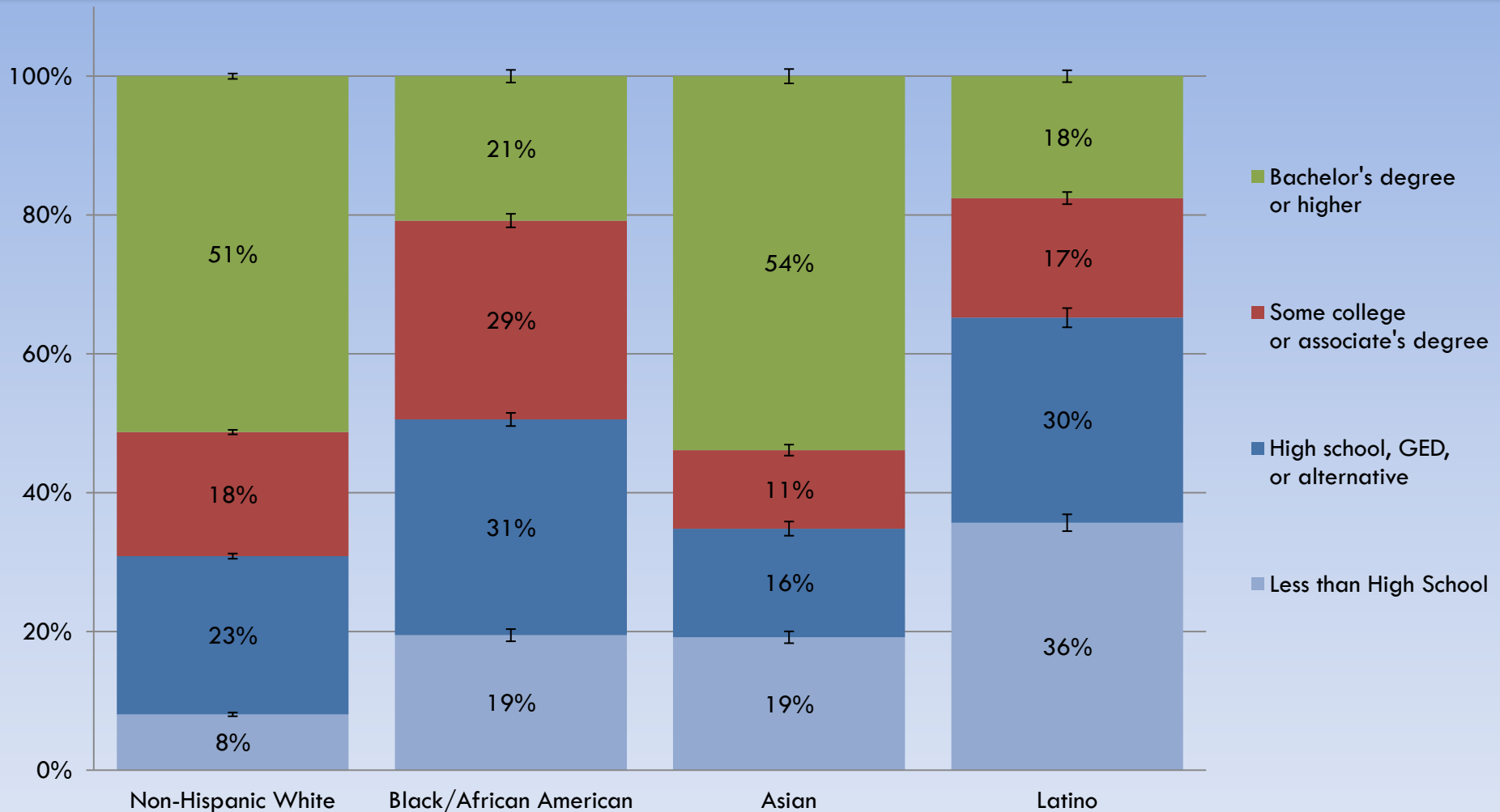
Source: Department of Labor and Workforce Development, 2010. Unemployment rates are not seasonally adjusted.

Massachusetts Unemployment Rate, By Race/Ethnicity, 2010



Note: Black bars indicate 90% confidence interval.
Source: Bureau of Labor Statistics, Massachusetts, 2010.

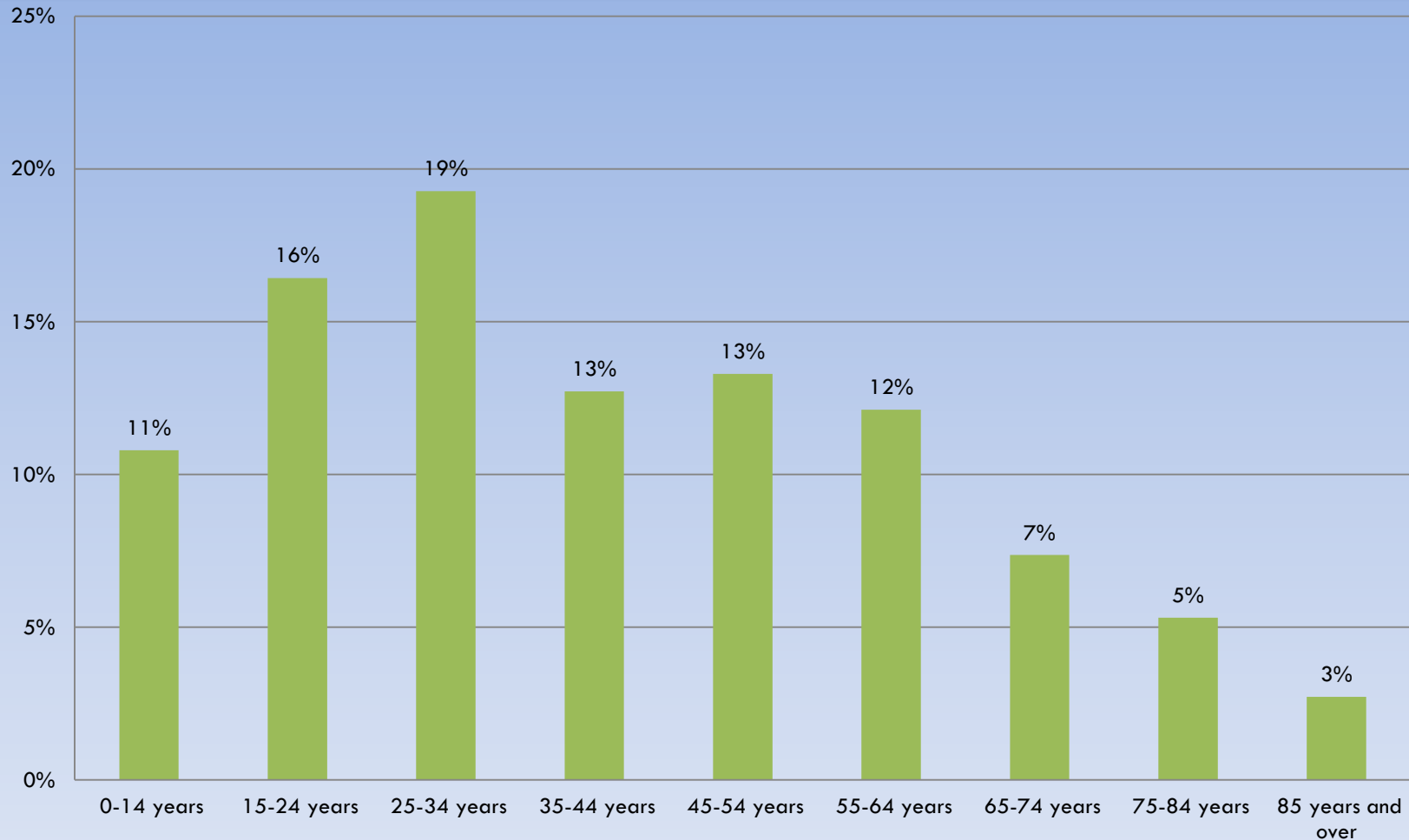
Educational Attainment By Race/Ethnicity, Inner Core Population 25 Years and Over



Black bars indicate 90% confidence interval.

Source: American Community Survey 2005-09, Inner Core Communities, MA.

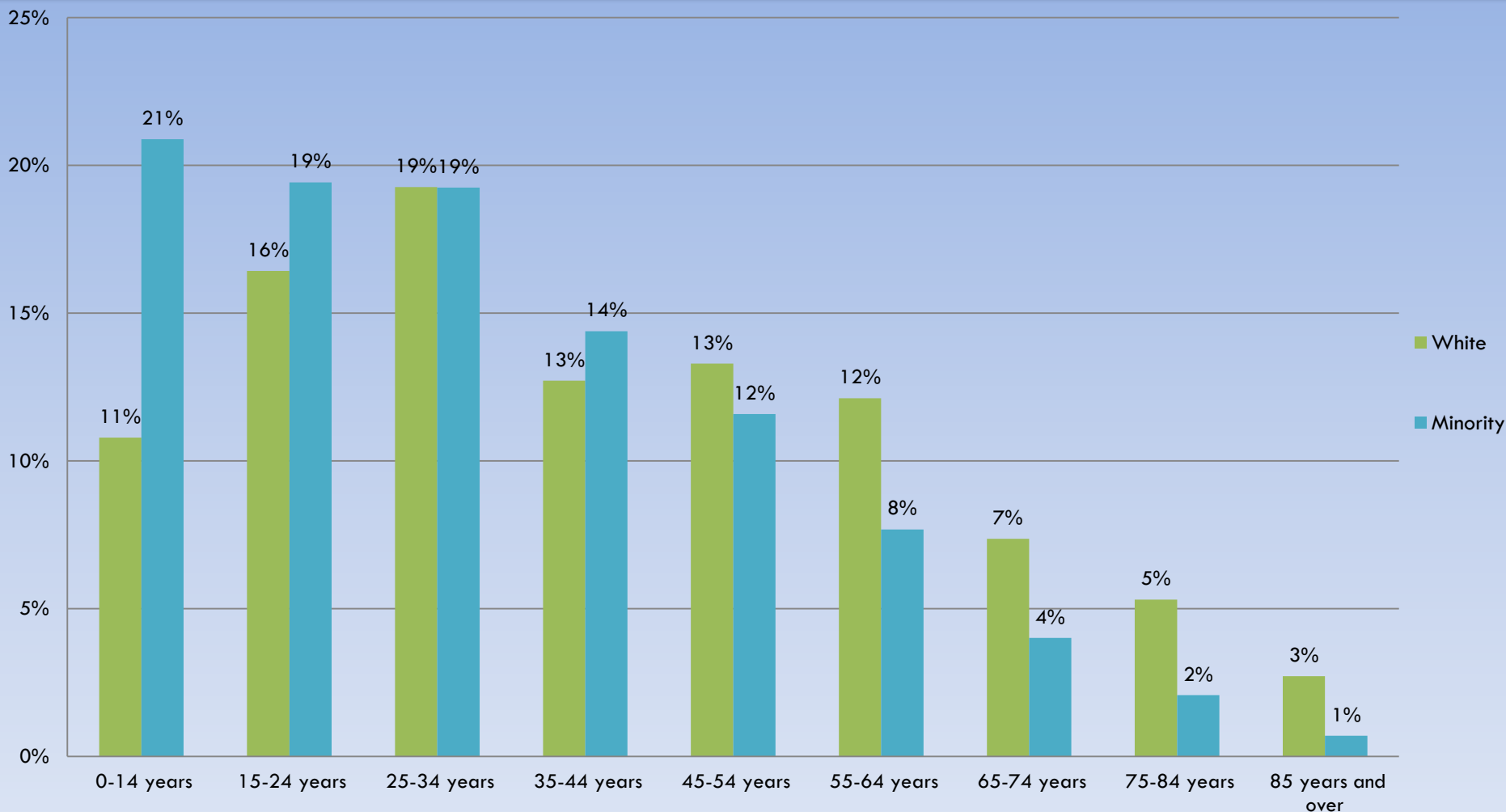
Inner Core White (Non-Hispanic) Population by Age, 2010



Note: Ages are grouped in 10 year intervals, except for children aged 0-14 years old.

Source: Census 2010.

Inner Core White (Non-Hispanic) and Minority Populations by Age, 2010



Note: Ages are grouped in 10 year intervals, except for children aged 0-14 years old.

Source: Census 2010.

Questions



Jamila Henderson, Research Analyst, jhenderson@mapc.org
Holly St. Clair, Director of Data Services, hstclair@mapc.org

Data Services Department
Metropolitan Area Planning Council

www.mapc.org
www.metrobostondatacommon