

Your Community by the Numbers

Accessing the most current and relevant Census data

Alexandra Barker

Data Dissemination Specialist

U.S Census Bureau

New York Regional Office

617-519-1099

Alexandra.s.barker@census.gov



Labor Force Statistics from the Current Population Survey



FONT SIZE: PRINT:

BROWSE CPS

[CPS HOME](#)

[CPS OVERVIEW](#)

[CPS NEWS RELEASES](#)

[CPS DATABASES](#)

[CPS TABLES](#)

The **Current Population Survey (CPS)** is a monthly survey of households conducted by the Bureau of Census for the Bureau of Labor Statistics. It provides a comprehensive body of data on the [labor force](#), [employment](#), [unemployment](#), persons [not in the labor force](#), [hours of work](#), [earnings](#), and other [demographic](#) and [labor force characteristics](#).

For Your Information

LATEST NUMBERS



SEASONALLY ADJUSTED

Unemployment Rate:

8.3% in Feb 2012



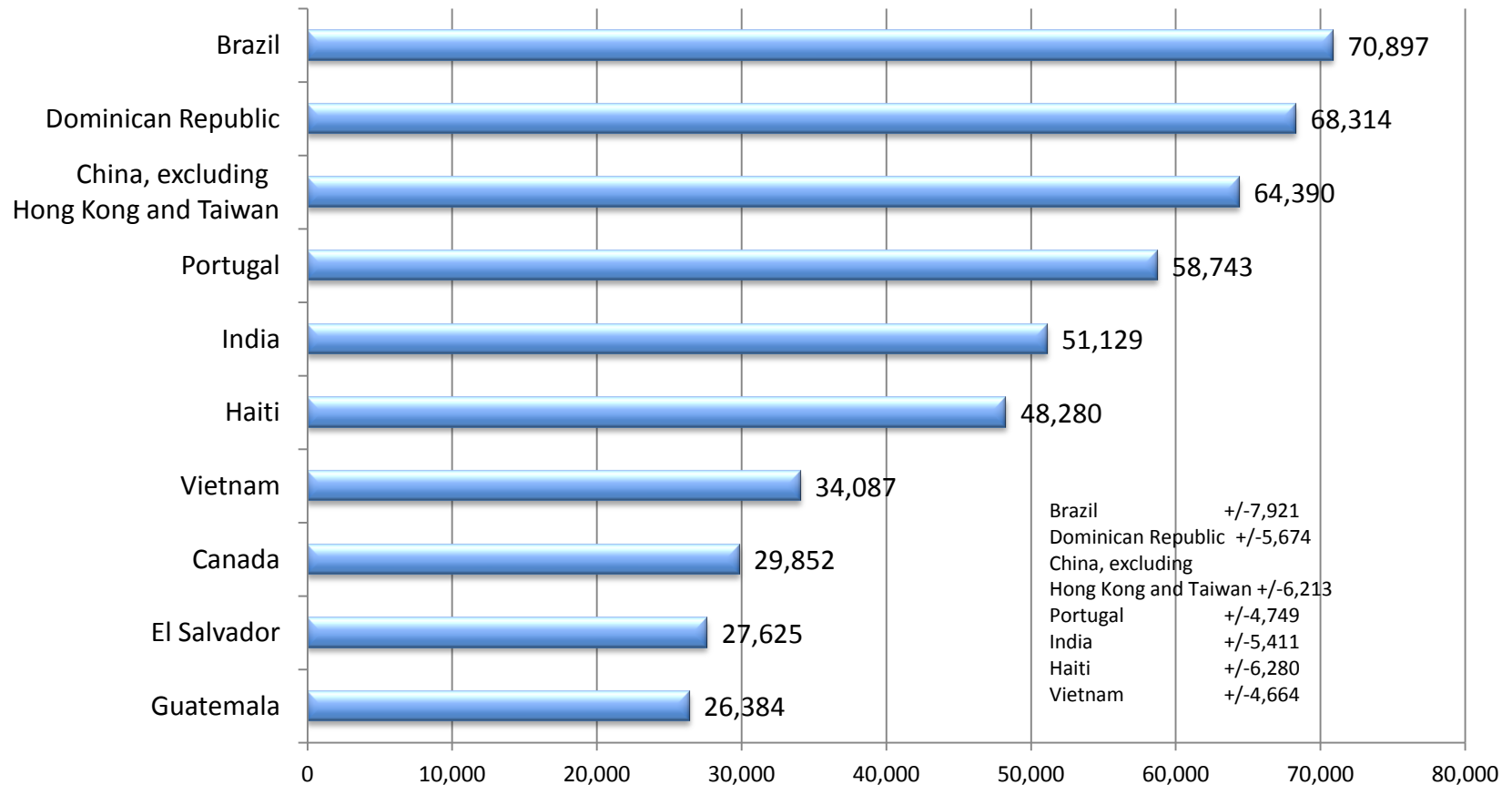
Change in Unemployment Level:

+48,000 in Feb 2012



Top 10 Foreign Born Populations in Massachusetts by Country of Birth

2010 American Community Survey



Universe: Total Population 617,594

2010 Census – Summary File 1 DP-1 Profile of General Population and Housing Characteristics

2010 Census - Summary File 1 - DP-1 Profile of General Population and Housing Characteristics



American FactFinder Components

- **Summary Levels**
 - Geography
- **Program**
 - Census or Survey
- **Data Sets**
 - Data File
- **Product Type**
 - Table or Map



Summary Level: Geography

Search using the options below:

- Topics
(age, income, year, dataset, ...)
- Geographies**
(states, counties, places, ...)
- Race and Ethnic Groups
(race, ancestry, tribe)
- Industry Codes
(NAICS industry, ...)

Select Geographies

Name Address Map

Enter a geography name or use the Geography Filter Options below:

Boston, m

GO

Your Geography Filters

'Your Geography Filters' is empty

Geography Filter Options

- ☐ Geographic Type
 - Nation (1)
 - State (62)
 - County (6,373)
 - City or Town (186,744)
 - Congressional District (7,626)
 - Census Tract (170,429)
 - Metro/Micro Area (1,223)
 - ZIP Code/ZCTA (156,768)
 - Other (176,138)
- ☒ **Summary Level**

Select geographies to add to Your

Select from:
☒ most requested summary levels

Geography Results: 1-25 of 705

Selected: ☐ Add ☒ Che

	Geography Name
<input type="checkbox"/>	United States
<input type="checkbox"/>	All States within United State
<input type="checkbox"/>	Alabama
<input type="checkbox"/>	Alaska
<input type="checkbox"/>	Arizona



Nation (010)

**Zip Code Tabulation
Area (860)**

Metropolitan Areas (310)

States 040

Congressional Districts (500)

Places (160)

Counties (050)

County Subdivision (060)
Cities and Towns

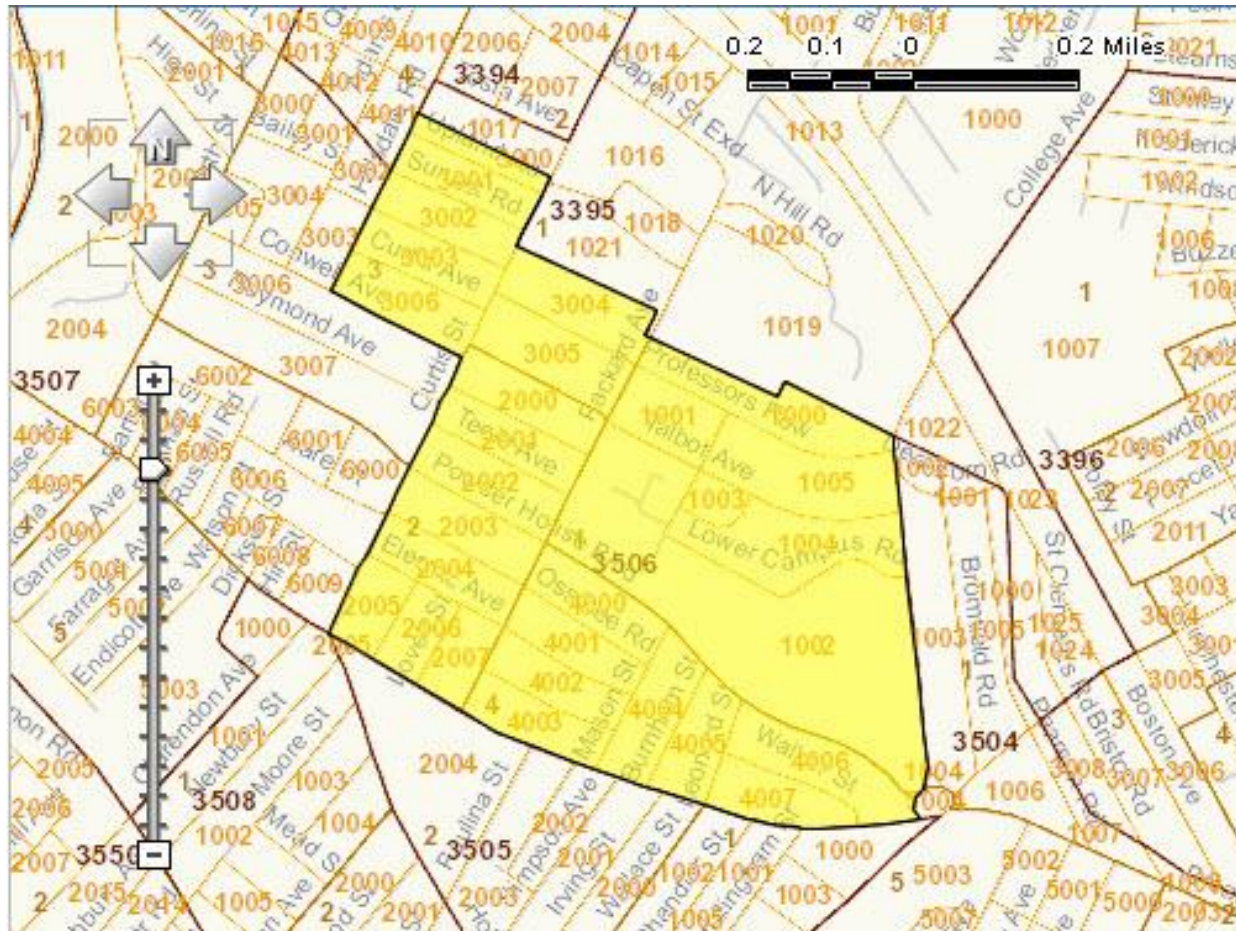
Census Tracts (140)

Block Groups (150)

Blocks (100)



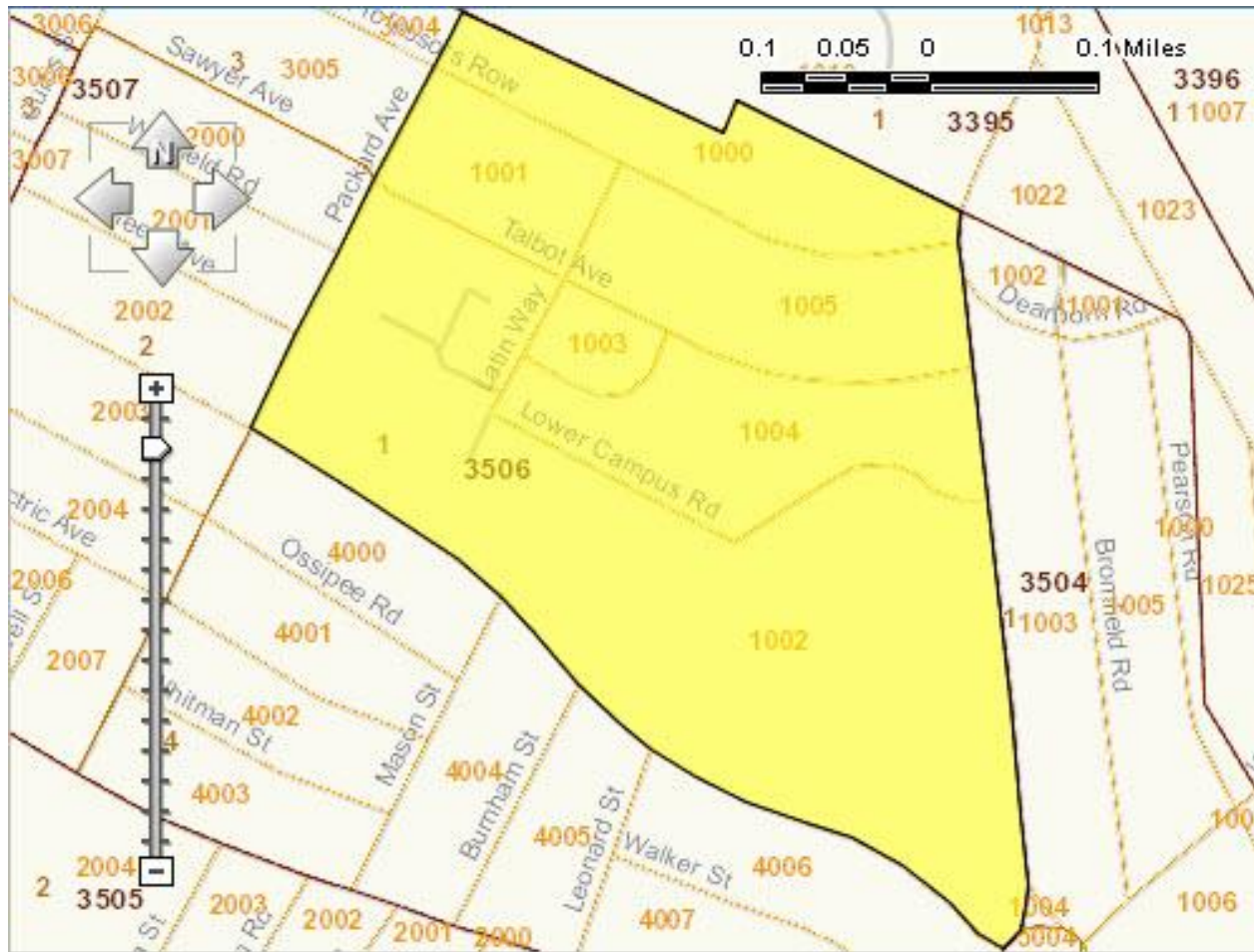
Census Tract 3506, Middlesex County, MA



- **Census Tracts** generally have a population of 1,500 to 8,000 (optimum **4,000**) and follow physical boundaries.



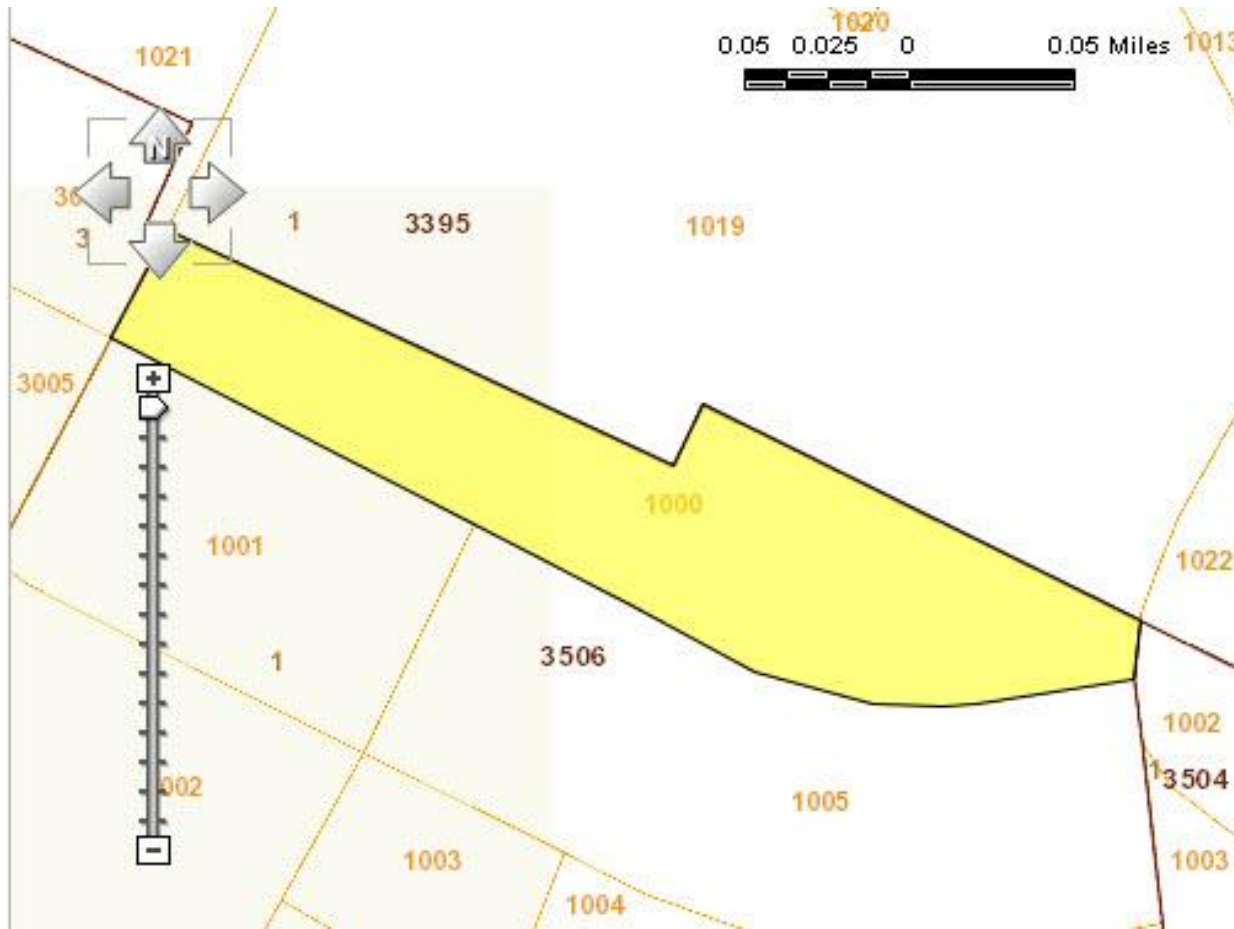
BG 1, Tract 3506, Middlesex County, MA



- **Block Groups** generally have a population of 300 to 4,000 (optimum 1,500) and follow physical boundaries.



Block 1000, BG 1, Tract 3506, Middlesex County, MA



- **Blocks:** the smallest geographic level for which census data is available. No population threshold. Size varies.



Programs

Your Selections

"Your Selections" is empty

Search using the options below:

Topics
(age, income, year, dataset, ...)

Geographies
(states, counties, places, ...)

Race and Ethnic Groups
(race, ancestry, tribe)

Industry Codes
(NAICS industry, ...)

Search Results:

Search for:

Select Topics search for tables and other files in America's Factfinder

Select Topics to add to 'Your Selections' ?

☐ People

☐ Housing

☐ Business and Industry

☐ Year

☐ Product Type

☒ Program

☐ Dataset

American Community Survey (31,006)

Annual Survey of Manufactures (91)

Business Expenses Survey (4)

Business Patterns (68)

Commodity Flow Survey (106)

Decennial Census (7,784)

Economic Census (1,294)

Nonemployer Statistics (26)

Population Estimates (35)

Survey of Business Owners (197)

☐ Include archived products in your search ?



Program

- **Decennial Census**
 - Every 10 years, Counts Residents
- **American Community Survey (ACS)**
 - Annual Social, Economic and Housing data
- **Other Surveys and Censuses**
 - Population Estimates
 - Economic Census

Data Sets

Your Selections

"Your Selections" is empty

Search using the options below:

Topics
(age, income, year, dataset, ...)

Geographies
(states, counties, places, ...)

Race and Ethnic Groups
(race, ancestry, tribe)

Industry Codes
(NAICS industry, ...)

Search Results:

Search for:

Select Topics

To search for tables and other files in America's Factfinder

Select Topics to add to 'Your Selections'

Year

Product Type

Program

Dataset

2010 ACS 5-year estimates (2,304)

2010 ACS 3-year estimates (2,964)

2010 ACS 1-year estimates (3,071)

2010 SF1 100% Data (658)

2010 SF2 100% Data (140)

2010 Redistricting Data SF (PL 94-171) (27)

2010 Demographic Profile SF (3)

2010 National Redistricting Data SF (27)

2010 Annual Survey of Manufactures (8)

2009 ACS 5-year estimates (2,097)

2009 ACS 3-year estimates (2,462)

2009 ACS 1-year estimates (2,775)

2009 Annual Survey of Manufactures (8)

2009 Business Patterns (14)

2009 Nonemployer Statistics (6)

2009 Population Estimates (35)

☐ Include archived products in your search



Data Sets

2010 Census

- 2010 Redistricting Data (P.L. 94-171)
- 2010 Demographic Profile
- 2010 Summary File 1
- 2010 Summary File 2

Census 2010: Summary File 1 (SF1 = 100% Data)

- ☐ Household Relationship
- ☐ Sex
- ☐ Age
- ☐ Hispanic or Latino Origin
- ☐ Race
- ☐ Tenure (own/rent)
- ☐ Vacancy characteristics

Summary File 2

Cross references detailed race and ethnic groups with all data subjects in SF1

Data Sets

2000 Census

- 2000 Redistricting Data SF (P.L. 94-171)
- 2000 SF 1 100% Data
- 2000 SF 2 100% Data
- **2000 SF 3 Sample Data**
- **2000 SF 4 Sample Data**

Comparable to
ACS Data



Data Sets

American Community Survey (ACS)

CURRENT DATA AVAILABLE FOR 2010

- Data is currently available for most geographic areas
 - Areas with a population **65,000+**: **1 Year Estimates**
(data avail. for 2005, 2006, 2007, 2008, 2009, 2010)
 - Areas with a population **20,000+**: **3-Year Estimates**
(data avail. for 2005-07, 2006-08, 2007-09, 2008-10)
 - Areas **below 20,000** (incl. census tracts & block groups):
5-year estimates (2005-09, 2006-10)



Product Types

Your Selections

'Your Selections' is empty

Search Results:

Search for:

Search using the options below:

Topics
(age, income, year, dataset, ...)

Geographies
(states, counties, places, ...)

Race and Ethnic Groups
(race, ancestry, tribe)

Industry Codes
(NAICS industry, ...)

Select Topics

To search for tables and other files in America's Census Data

CLOSE X

Select Topics to add to 'Your Selections' ?

+ People

+ Housing

+ Business and Industry

+ Year

- Product Type

- Comparison Profile (20)
- Data Profile (84)
- Detailed Table (22,799)
- Geographic Comparison Table (15,589)
- Geographic Header (33)
- Public Use Microdata Sample (6)
- Quick Table (347)
- Ranking Table (519)
- Selected Population Profile (20)
- Subject Table (788)

+ Program

+ Dataset

☐ Include archived products in your search ?



www.census.gov

The screenshot shows the United States Census Bureau website. The top navigation bar includes links for 'People', 'Business', 'Geography', 'Data', and 'Newsroom'. The 'Data' menu is highlighted with an orange circle, showing a dropdown list with the following items: 'Quick Facts', 'American FactFinder', 'Population Finder', '2010 Census', 'Economic Census', 'Interactive Maps', 'Training & Workshops', 'Data Tools', 'Catalogs', and 'Publications'. The 'American FactFinder' item is highlighted in yellow.

United States Census Bureau

About Us | Subjects A to Z | FAQs

People | Business | Geography | **Data** | Newsroom

Search

Business Patterns and Demographics

View business and population statistics down to the county level on this interactive map. Statistics include business counts, payroll, and population counts among other demographic information.

[See More](#)

MEASURING AMERICA

COUNTY BUSINESS and DEMOGRAPHIC

TOP 10 COUNTIES WITH THE MOST DAY CARE CENTERS

Rank	County	Count
1	Los Angeles County, CA	1,638
2	Cook County, IL	1,185
3	King County, WA	895
4	Harris County, TX	885
5	Kings County, NY	781
6	Pinellas County, FL	750
7	San Diego County, CA	695
8	Maricopa County, AZ	663
9	Maricopa County, AZ	584
10	San Clara County, CA	531

[EXPLORE THE MAP](#)

Bureau Economic Indicators

Indicator	Value	Change
Retail Sales Report	315,000	↑ 1.6%
Report Durable Goods	\$207.0 B	↑ 3.8%
Construction Report	685,000	↑ 9.3%
QFR - Retail Trade	2.7¢	↓ -0.3%

[View All](#)

QuickFacts

Quick, easy access to facts about

Census News

[New Features on Census Bureau Internet Home Page](#)

We changed our homepage. Tell us what you think.

Your Selections

"Your Selections" is empty

2

Search using the options below:

Topics

(age, income, year, dataset, ...)

Geographies

(states, counties, places, ...)

Race and Ethnic Groups

(race, ancestry, tribe)

Industry Codes

(NAICS industry, ...)

3

Getting Detailed Data

The following data are available on American FactFinder:

• Decennial Census

Taken every 10 years to collect information about the people and housing of the United States

• American Community Survey

An ongoing survey that provides data about your community every year

Your source for population, housing, economic, and geographic information



American FactFinder works with Mozilla Firefox 3.6 and Microsoft Internet Explorer 7. Other browsers may not perform as expected.

Quick Start

Enter search term(s) and click 'GO' ?

topic or table name state, county or place (optional)

for

GO

☒ topics ☐ race/ancestry ☐ industries

1

Or use the options on the left to begin your search

News and Notes

GET EMAIL UPDATES

Feb 09, 2012

The Census Bureau is releasing Summary File 2 data on a state-by-state flow basis from December 2011 through April 2012. Data has been released for: NV, NM, CT, DC, OK, OR, FL, MA, MS, and WA. SF 2 provides detailed data on age, sex, households, families, the group quarters population, and occupied housing units for up to 331 race, Hispanic or Latino origin, and tribal population groups. Presentation of SF 2 tables for a population group is subject to a threshold of 100 or more people of a particular group in a particular geographic area. [more >](#)



U.S. Population Clock

04:12 UTC (EST+5) Feb 10, 2012

312,992,465

[more population clocks >](#)

Reference Maps

Reference Maps show selected geographic boundaries for an area along with orienting features, such as roads.

United States

GO

4

Address Search



Find Census data by entering a [street address](#).

5

Load Query

Use Load Query to restore a previously saved query





We welcome your feedback!

Visit

www.zoomerang.com/Survey/WEB22E99V8M2ME