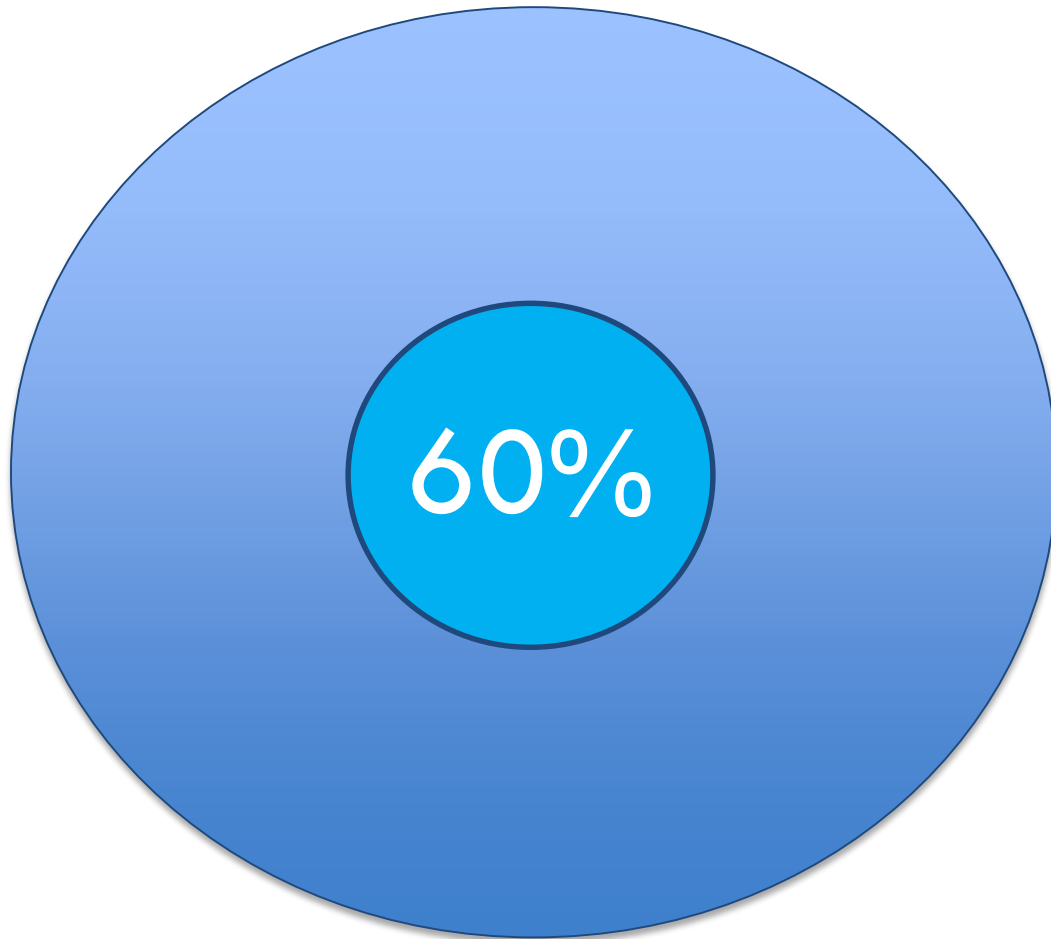




# Public Health

Barry Keppard, Director of Public Health



Health starts long before illness, in our homes, schools and jobs.

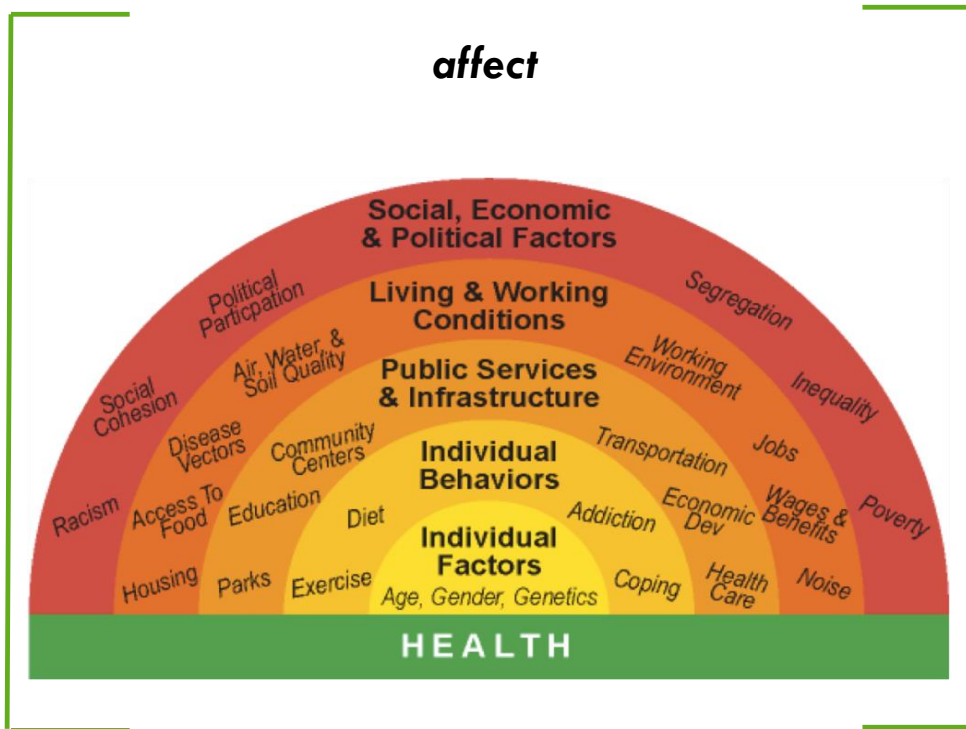
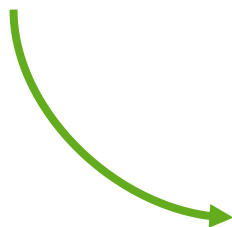




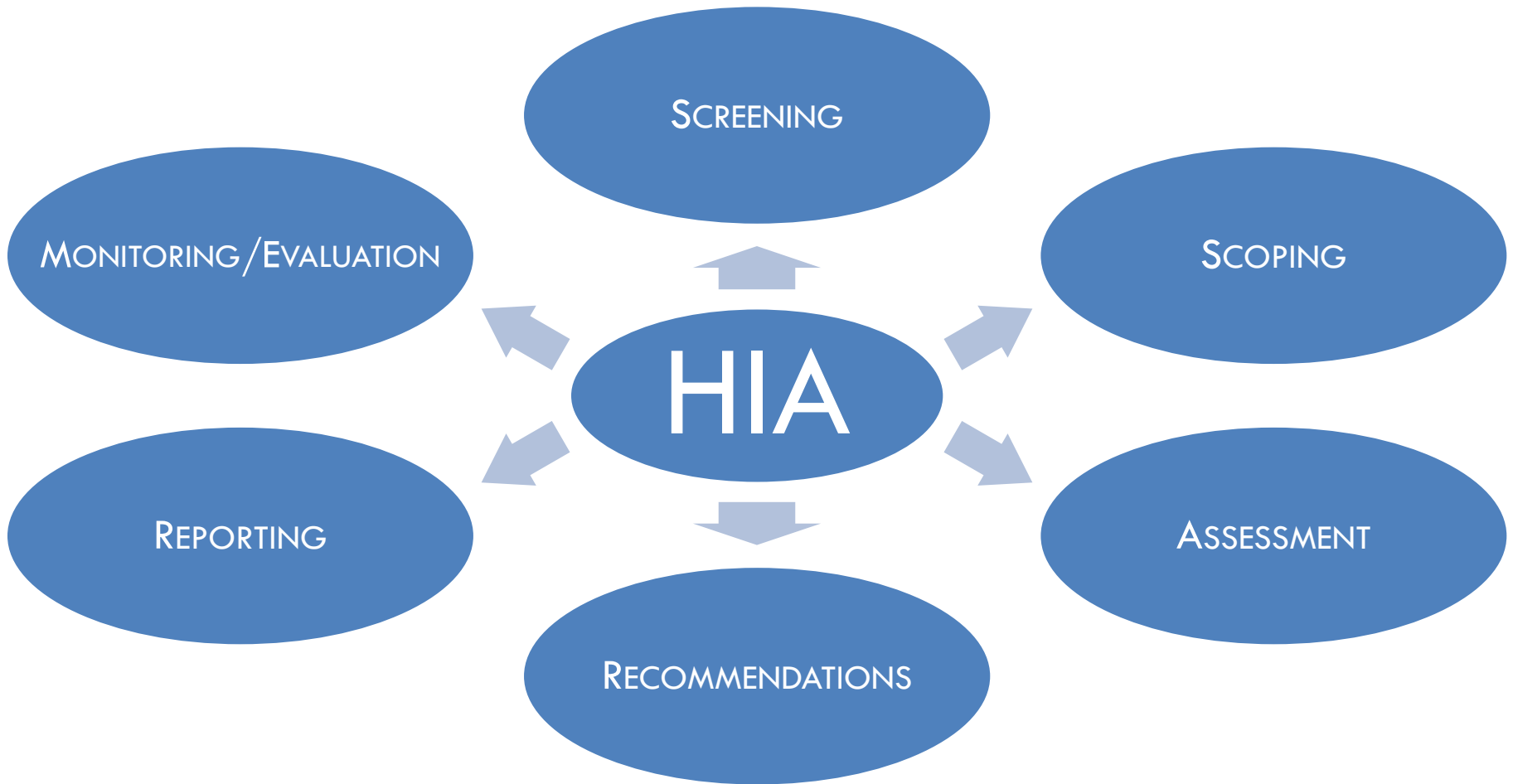
#ZeroTo101

# Health Impact Assessment

How do projects,  
plans, policies,  
laws, budgets



and lead to  
changes in health



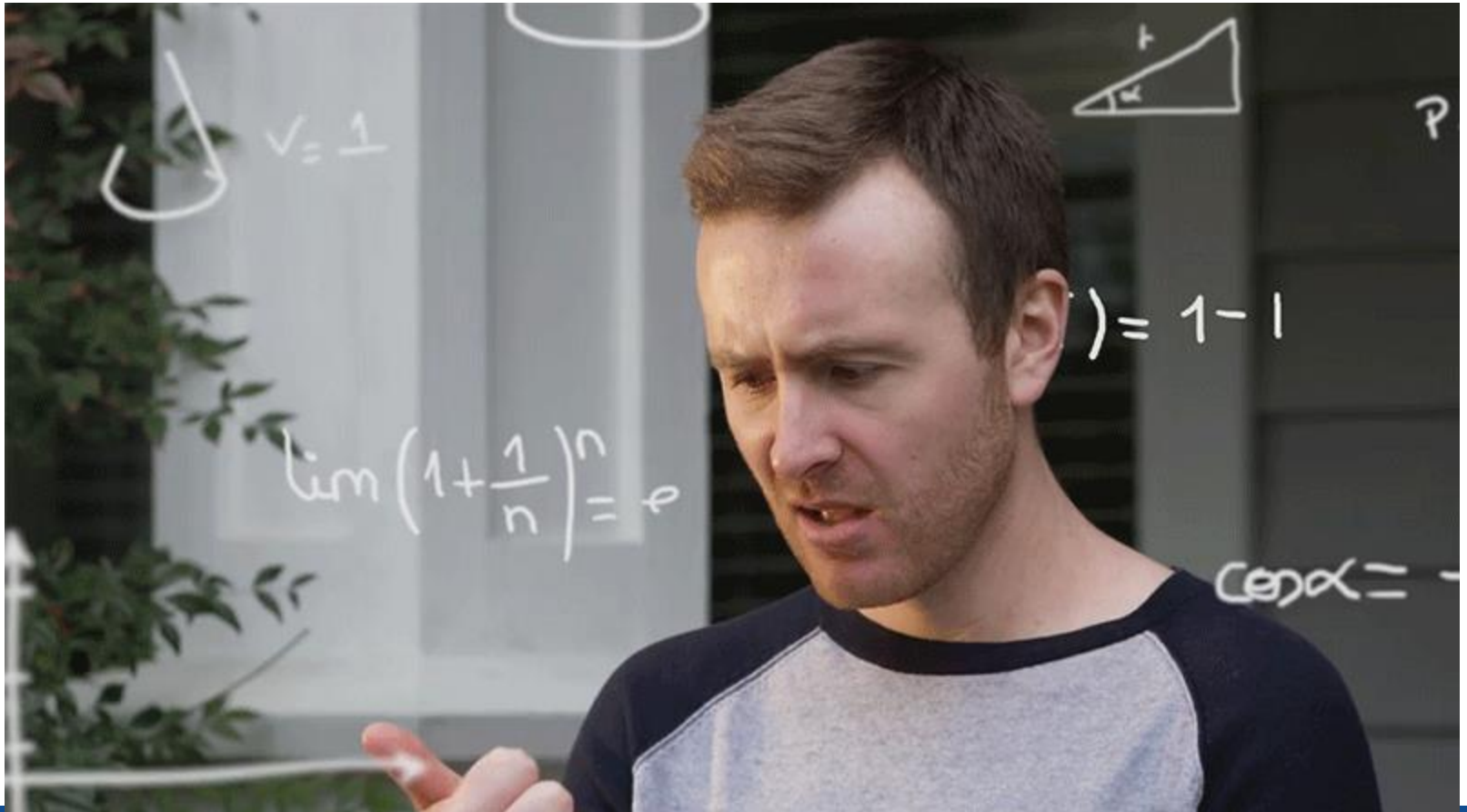
**Ethical Use**  
of Evidence

**Equity**

**Holistic**  
View of Health

**Democracy**

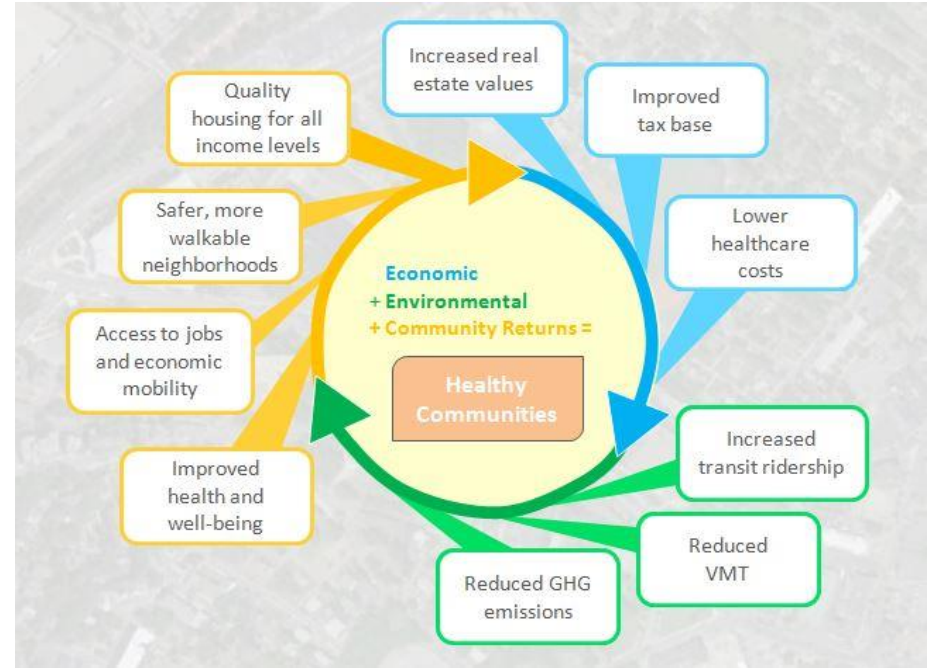
**Sustainability**



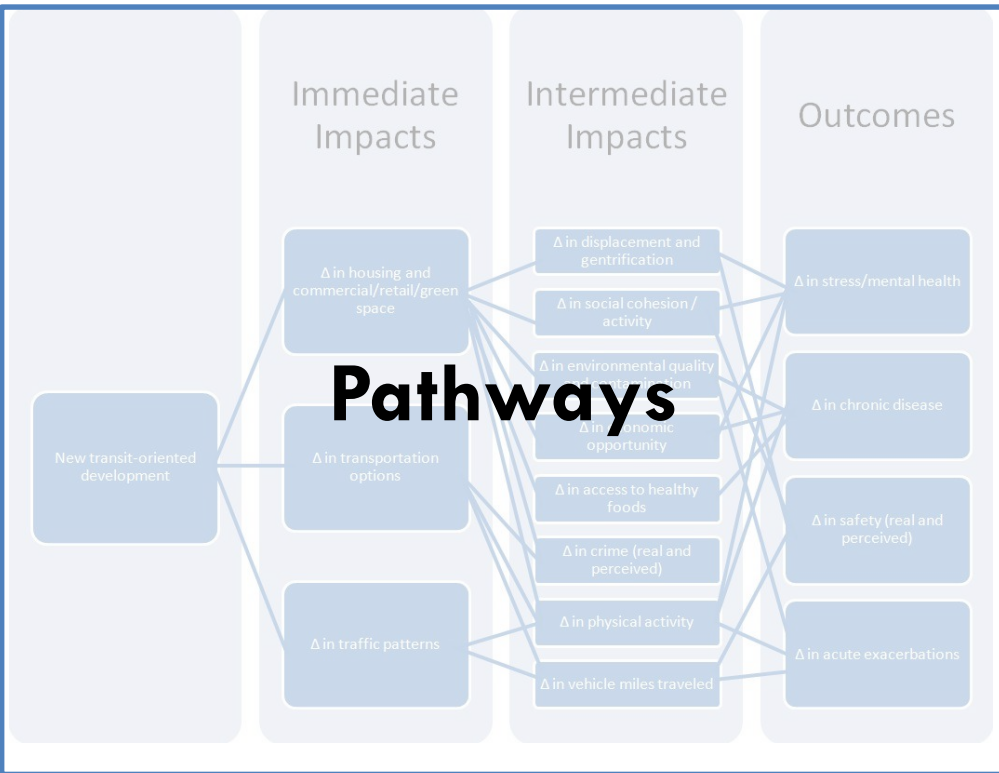


# Healthy Neighborhood Equity Fund

- CLF and MHIC proposed \$30 million private equity
- Considers community, environmental, and health benefits of a proposed project (in addition to economic return)



# Healthy Neighborhood Equity Fund



<p><b>Walkability / Active Transport</b> Create a more walkable environment, increase access to destinations, and improve State of Place score</p>	<p><b>Traffic Safety</b> Increase traffic by bringing more people into the area</p>	<p><b>Green Housing</b> Add new green housing units</p>
<p><b>Safety from Crime</b> Reduce crime by bringing well-lit mixed-used developments and new commuters, residents, and employees to the area</p>	<p><b>Affordable Housing</b> Add new income-restricted affordable units</p>	<p><b>Green Space</b> Add trees, green and public space</p>
<p><b>Food Access</b> Increase the area's access to healthy affordable foods</p>	<p><b>Gentrification /Displacement</b> Possible risk of displacement particularly with low-income or cost-burdened households</p>	<p><b>Social Cohesion</b> Add space for social interactions</p>
<p><b>Air Quality</b> Increase air pollution with the increased traffic</p>	<p><b>Economic Opportunity</b> Expand economic opportunity by creating temporary jobs and permanent new jobs in a transit-accessible location</p>	<p><b>Environmental Contamination</b> Remediation and mitigation of opportunities for environmental exposures should be conducted to prevent future environmental exposures to residents, workers, and visitors, although proper remediation may actually decrease opportunities for exposure.</p>

**Outcomes**

# Healthy Neighborhood Equity Fund

- **Shaped** the equity fund's structure and review mechanisms
- **Influencing** building designs and uses
- **Informing** long range research study
- **Provides** a more holistic framework for TOD plans



# HIA Applies a Health Lens

- How we plan and build
- Who we welcome
- How we alter our environment



Zero can  
support  
better  
health

# MAPC Public Health Department

Barry Keppard, Director of Public Health

[bkeppard@mapc.org](mailto:bkeppard@mapc.org)

617-933-0750

<https://www.mapc.org/our-work/expertise/public-health/>

(see *Health and Equity Assessments* section for more info on MAPC's HIA)