



Environment Department

Darci Schofield, Senior Environmental Planner

Using Nature toward #ZeroTo101

MAPC Environment for Carbon Reduction/Sequestration

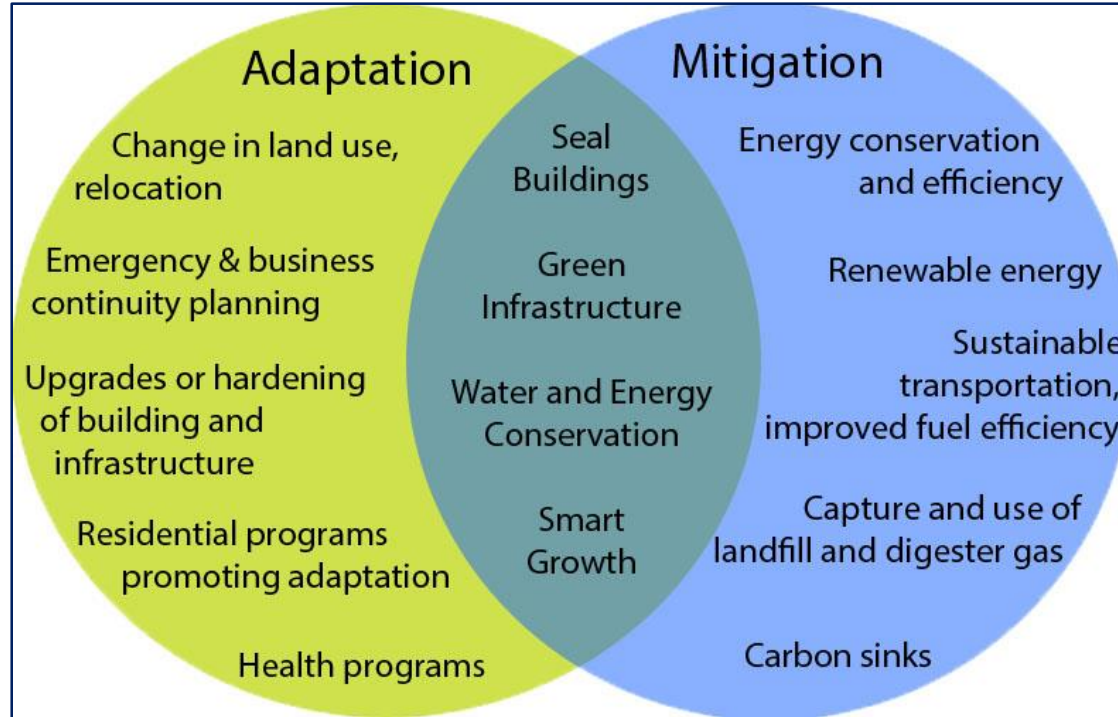
1. Planning for Climate Resilience with Nature
 - a) Climate Action Plans/MVP Program
 - b) Hazard Mitigation Plans

2. Technical Assistance for Green Infrastructure
 - a) Low Impact Development Toolkit
 - b) Stormwater Management and Utility



Climate Resilience with Nature

Regional Climate Change Strategy



Climate Resilience with Nature

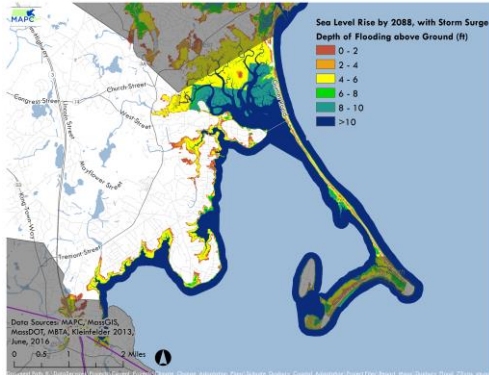
MVP and Climate Action Plans



RESILIENT QUINCY PLAN OCTOBER 2016

Prepared for:
City of Quincy Planning
Department
34 Codrington Street
Quincy, MA 02269
617.376.1365

Prepared by:
Metropolitan Area
Planning Council
60 Temple Place
Boston, MA 02111
617.933.0700



Climate-Smart Cities Boston Metro Mayors Region

Enter an address or place

Layers

Overlay Data

- Parcels
- Study Area
- Municipalities
- Connect
- Cool
- Absorb
- Protect
- Critical Infrastructure
- Climate Equity
- Green Infrastructure Suitability

Analysis Results

- Turn off all Results
- Overall Climate Smart Cities Priorities
- Connect
 - Improve Bike Network - Bike to Work Priorities
 - Improve Bike Network - Proposed Bike Path Priorities
 - Improve Pedestrian Network: Sidewalk Improvement Priorities
 - Access to Public Schools
 - Access to Parks
 - Gaps in Greenway Network
 - Gaps in Public Transit
 - Improve Pedestrian Safety
 - Improve Cyclist Safety
 - Overall Connect Priorities
- Cool
- Absorb
- Protect
- Climate Equity

Internet Explorer Infrastructure

https://web.tplgis.org/metromayors_csc/

Climate Resilience with Nature

Hazard Mitigation/ Pre-Disaster Mitigation Plans



Technical Assistance for Green Infrastructure Low Impact Development Toolkit

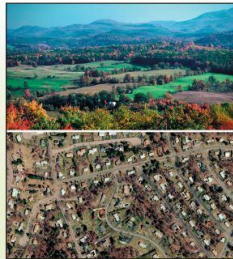
Low Impact Development Stormwater BMPs

Bioretention Vegetated areas that collect, treat, and infiltrate rainwater.		Low-Impact Roadways Narrow roadways and cul-de-sac alternatives that reduce runoff.	
	Cisterns and Rain Barrels Tanks and containers that store rainwater for landscaping.		Green Roofs Vegetated roof systems that capture rainfall and return it to the atmosphere.
Vegetated Swales Shallow drainage channels that slow runoff and filter it.		Permeable Paving Paving surfaces that allow rainwater to percolate into the ground.	

MASSACHUSETTS SMART GROWTH
Toolkit



Low Impact Development (LID)



LID is a land development technique that combines innovative site design with advanced stormwater treatment to maintain the pre-existing hydrologic system of a site and mitigate impacts of stormwater pollution. The technique provides a means to develop more aesthetically pleasing projects that simultaneously protect open space and water resources.



City of Chelsea, Green Infrastructure Plan for Parks and Open Space

Financial Considerations

More concentrated (cluster) design, with less impervious area and stormwater drainage and other utilities, means significant cost savings to developers. Less impervious surface creates less surface runoff, which will decrease the burden to municipal drainage infrastructure. These techniques also reduce non-point source pollution to drinking water supplies, recreational waters, and wetlands.

For More Information:

Massachusetts Smart Growth Toolkit
<http://www.mass.gov/ocd>

Low Impact Development Center
<http://www.lowimpactdevelopment.org>

MAPC LID Toolkit
<http://www.mapc.org/lid.html>

Stormwater Manager's Resource Center
<http://www.stormwatercenter.net/>

EOEA's LID Website
<http://www.mass.gov/envir/lid/default.htm>

Technical Assistance for Green Infrastructure Stormwater Management

Neponset Stormwater Partnership

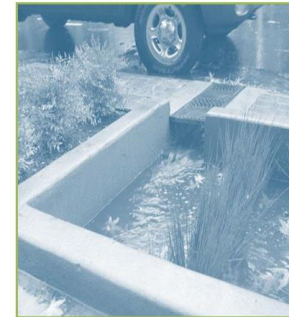
ABOUT US

The Neponset Stormwater Partnership aims to reduce the cost and increase the effectiveness of municipal stormwater management programs through regional cooperation and resource sharing.

Partners include the towns of Canton, Dedham, Foxborough, Medfield, Milton, Quincy, Sharon, Stoughton, Walpole, and Westwood, along with the [Metropolitan Area Planning Council \(MAPC\)](#), and the [Neponset River Watershed Association](#).



The partnership began in 2014 through a Community Innovation Challenge Grant (CIC), which was developed by the Patrick Administration in 2012. The program was meant to encourage and incentivize regionalization based upon the belief that the most crucial and visible interactions between government and citizens occur locally. [Read more about the CIC Program here.](#)



Stormwater Financing/Utility Starter Kit

Funding provided by the U.S. Environmental Protection Agency and the U.S. Department of Housing and Urban Development Partnership for Sustainable Communities.

Prepared for:

The 101 Cities and Towns of Greater Boston

DRAFT
March 23, 2014

Prepared by:

Metropolitan Area
Planning Council
60 Temple Place, 6th Floor
Boston, Massachusetts 02111
Tel (617) 933-0700
www.mapc.org

Environment Resources

<https://www.mapc.org/our-work/expertise/environment/>

Questions:

Darci Schofield, Senior Environmental Planner

DSchofield@mapc.org, 617-933-0794