

# Reimagining Railroad Strengthening Connections Downtown

Public Meeting #1  
March 26, 2014



# Agenda

## 1. Introduction

- Context: What led up to tonight's workshop
- Railroad Ave: A priority in Downtown Work Plan

## 2. MAPC – MetroFuture, TOD, Study Area

## 3. What we want to discuss tonight: The Study Area

- Data for context
- Questions for audience

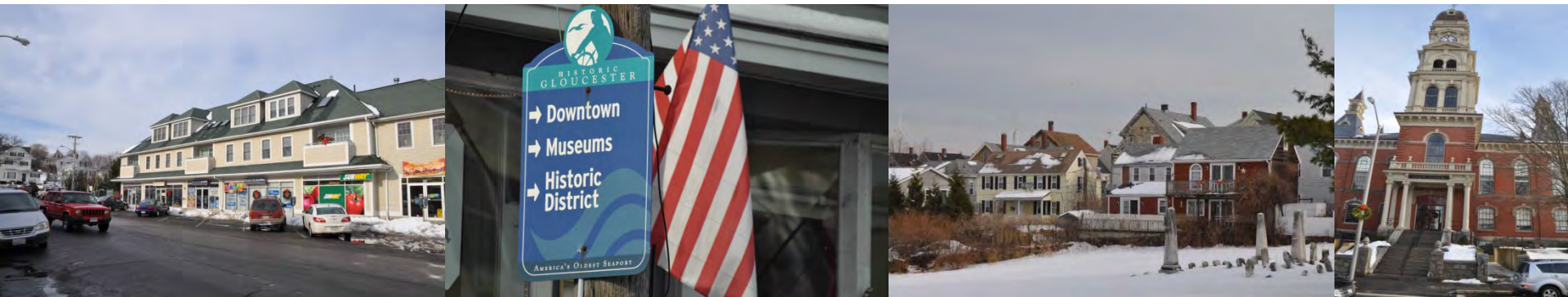
## 4. Table discussions

## 5. Wrap up + next steps, walk audit

# Why are we here tonight?

Looking for ways to better connect the commuter rail station to the residential areas and the activity and vibrancy of Downtown and the Harbor.

The project aims to make the city more walkable, functional, and prosperous while preserving the authentic character the community values.



# Why are we here tonight?

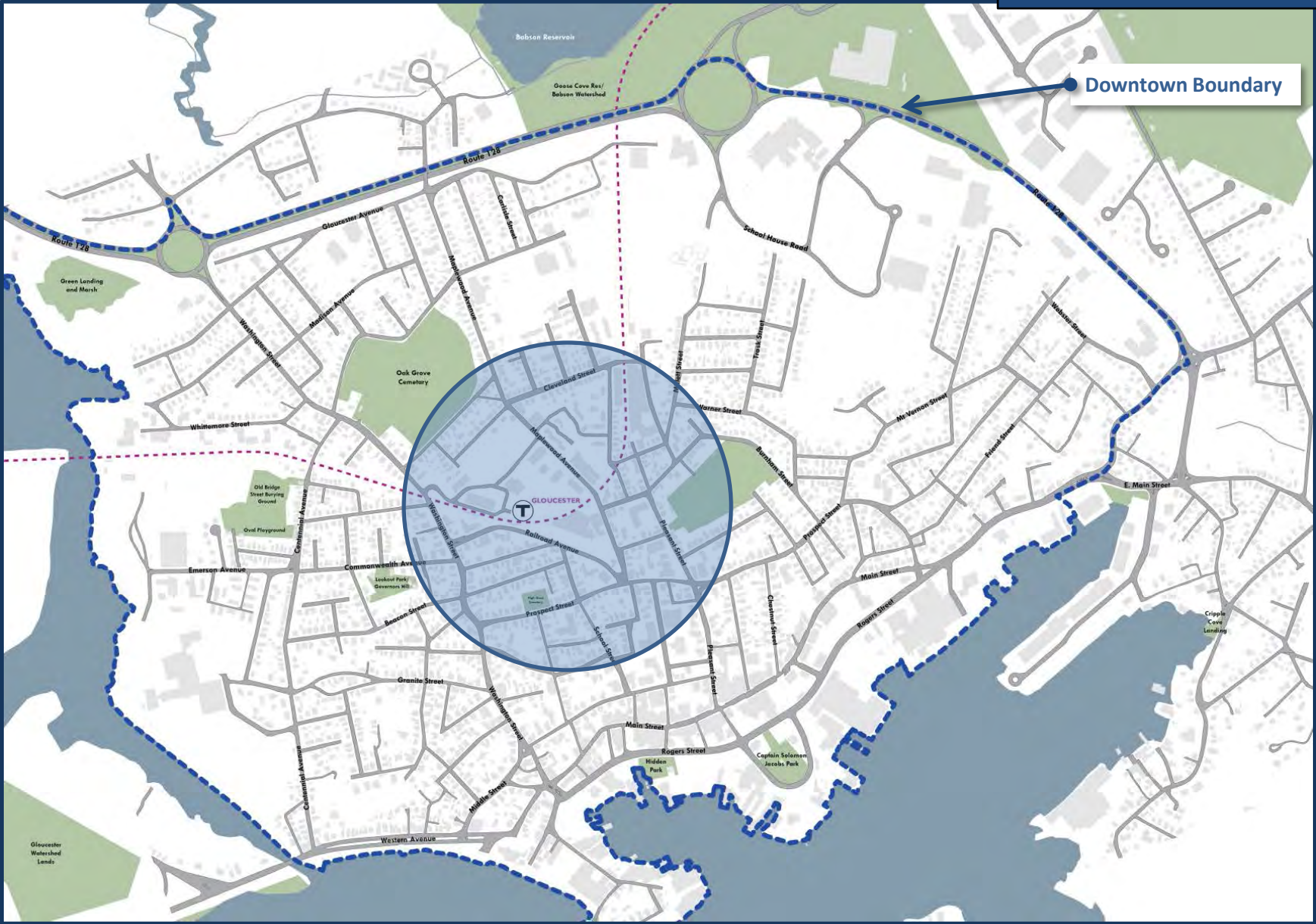
Progression from the Downtown Work Plan (Fall 2013)

- Definitions and Operating Scales of Downtown
- 3 meetings focused on a snap-shot of Downtown (5-year)
- Review of demographics, metrics, investments
- Feedback, Distillation, and Recommendations for Action!

*“We can focus on guiding what we want to see happen, and what’s important to us.”*

Reimagining Railroad  
Strengthening Connections Downtown

**DOWNTOWN?**

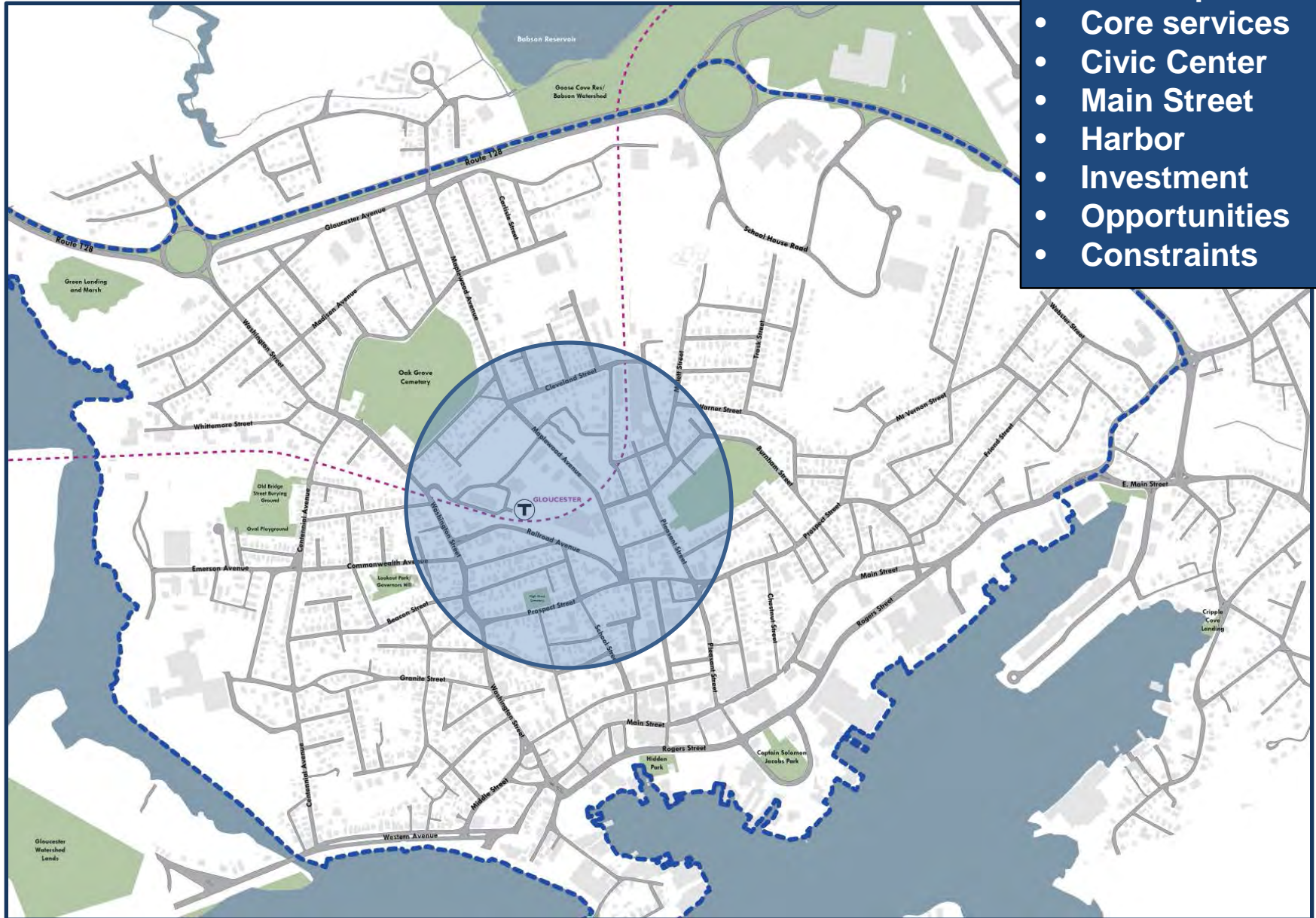




# Reimagining Railroad

## Strengthening Connections Downtown

- 30% Population
- Core services
- Civic Center
- Main Street
- Harbor
- Investment
- Opportunities
- Constraints

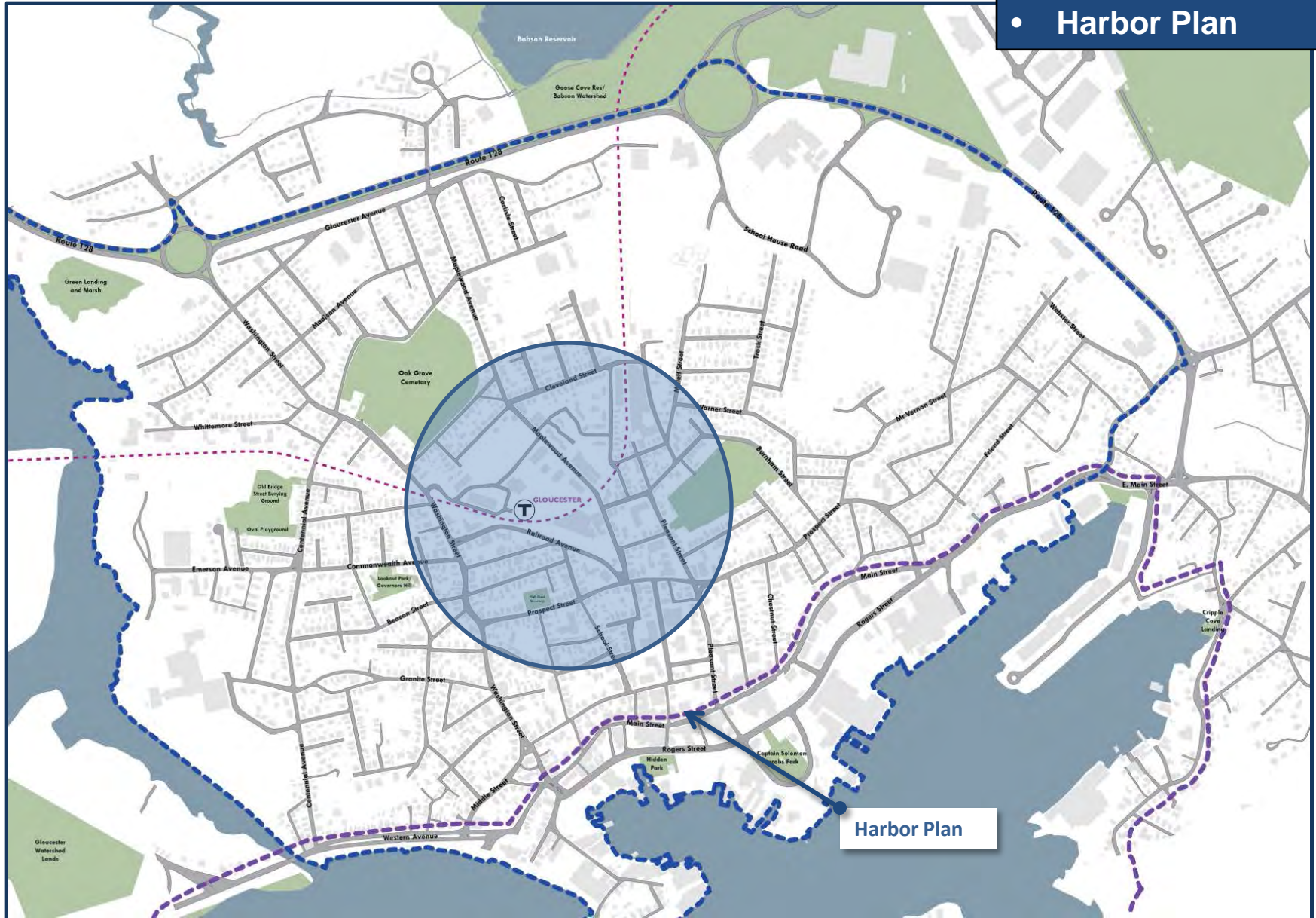




# Reimagining Railroad

## Strengthening Connections Downtown

- We break it down
  - Harbor Plan

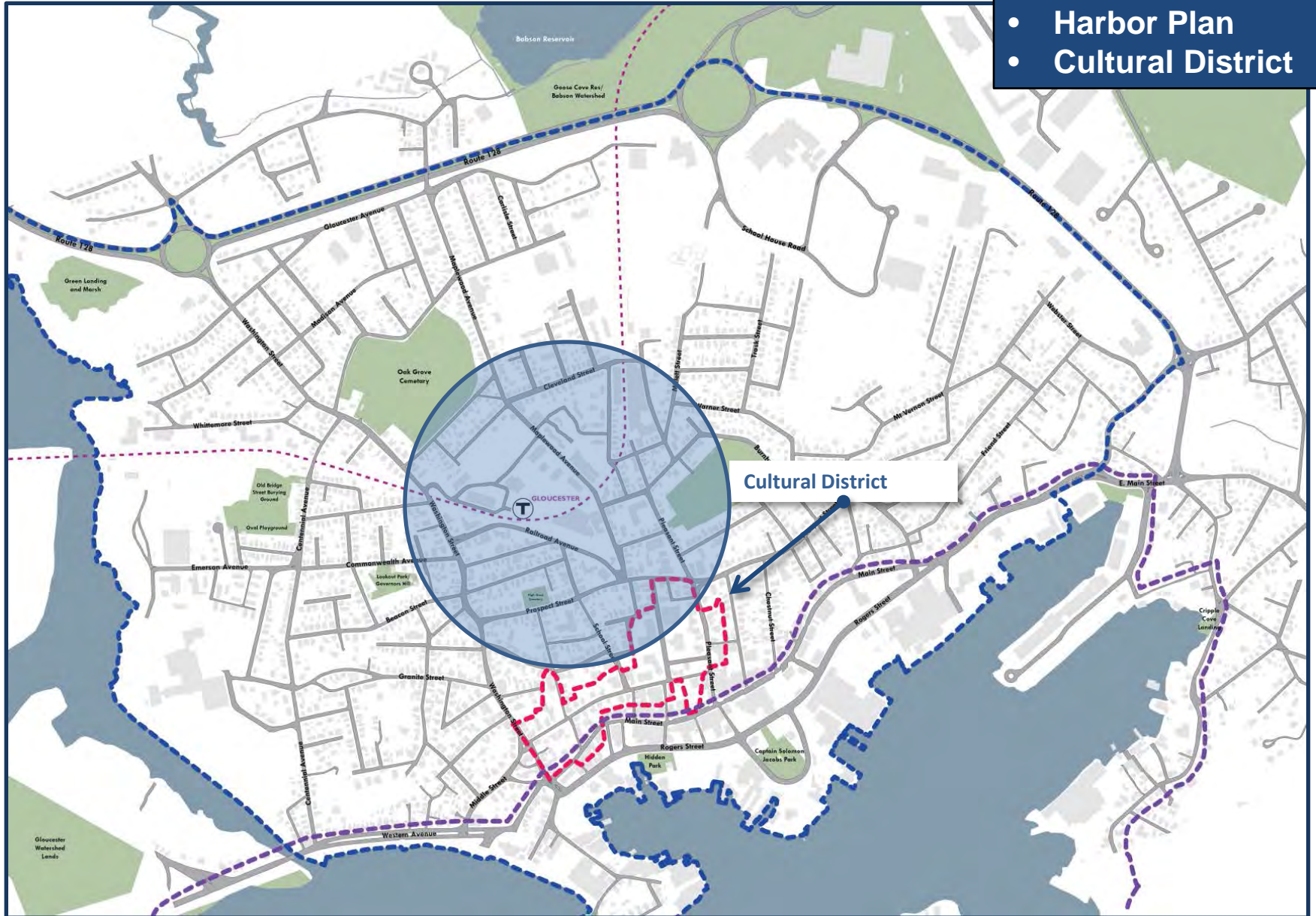




# Reimagining Railroad

## Strengthening Connections Downtown

- We break it down
- Harbor Plan
  - Cultural District



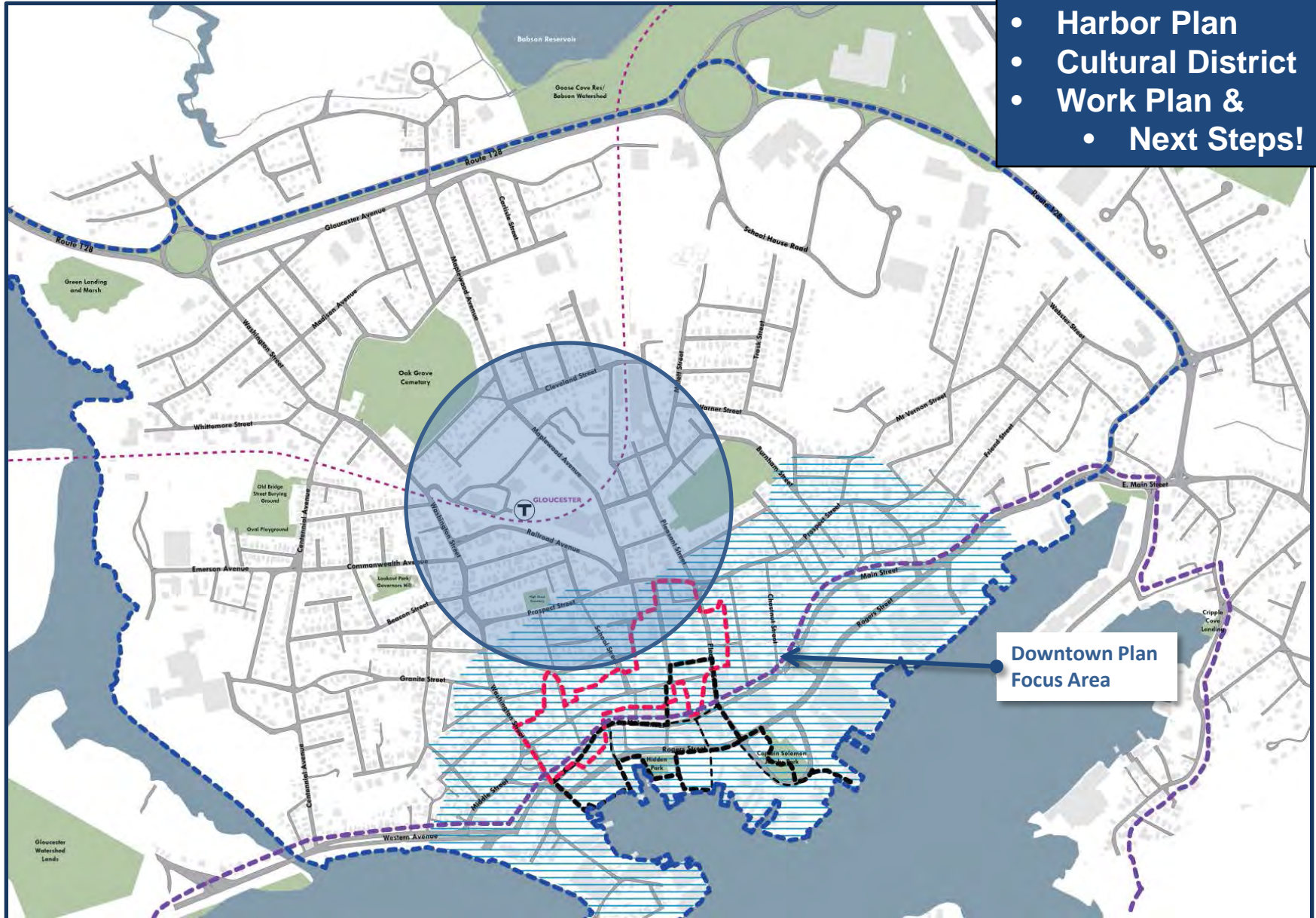


# Reimagining Railroad

## Strengthening Connections Downtown

We break it down

- Harbor Plan
- Cultural District
- Work Plan &
  - Next Steps!

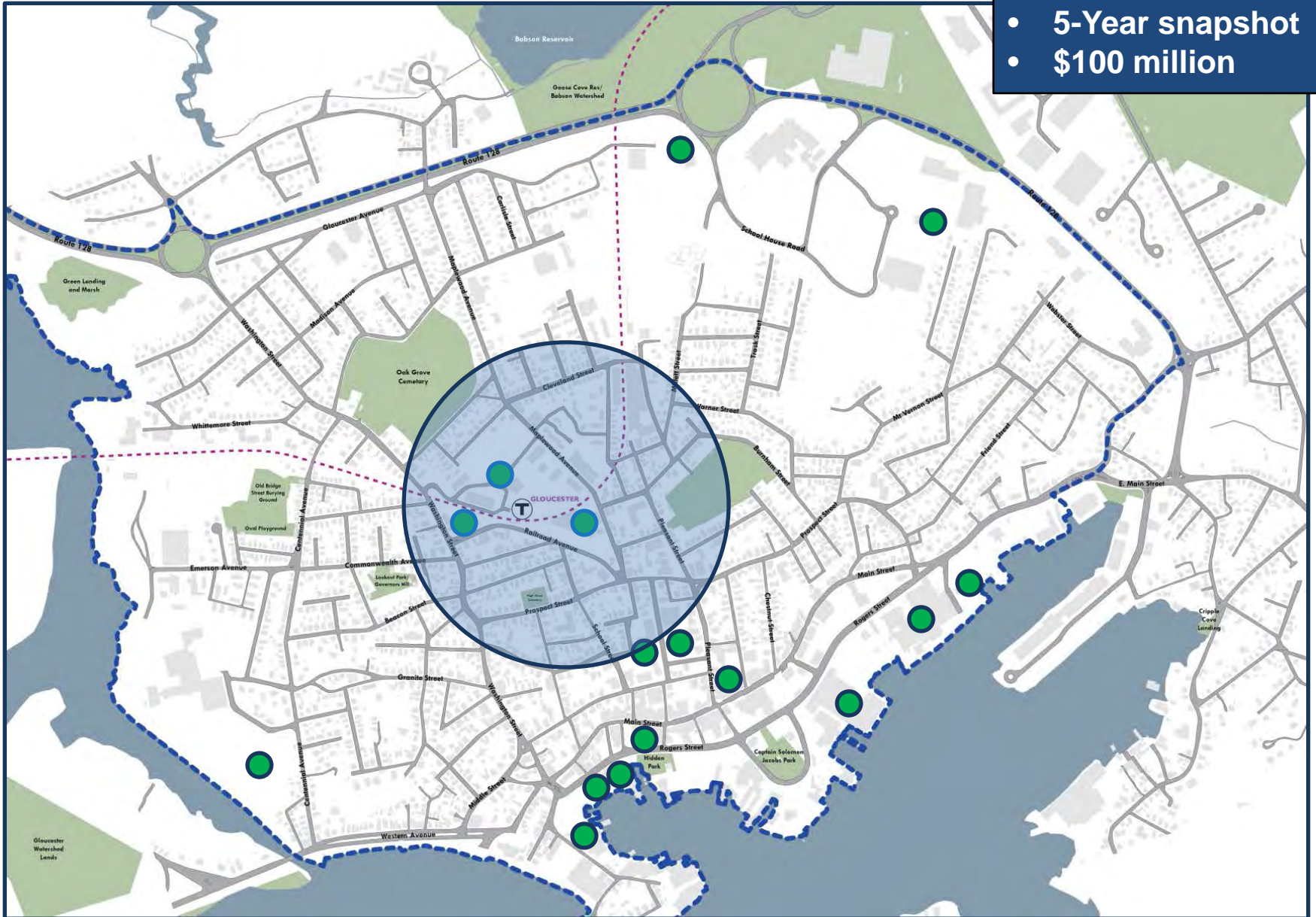


Downtown Plan  
Focus Area



## Reimagining Railroad Strengthening Connections Downtown

- Private Investments**
- 5-Year snapshot
  - \$100 million



# Private Investment



New Residential Developments



# Commercial Development





# Office Development



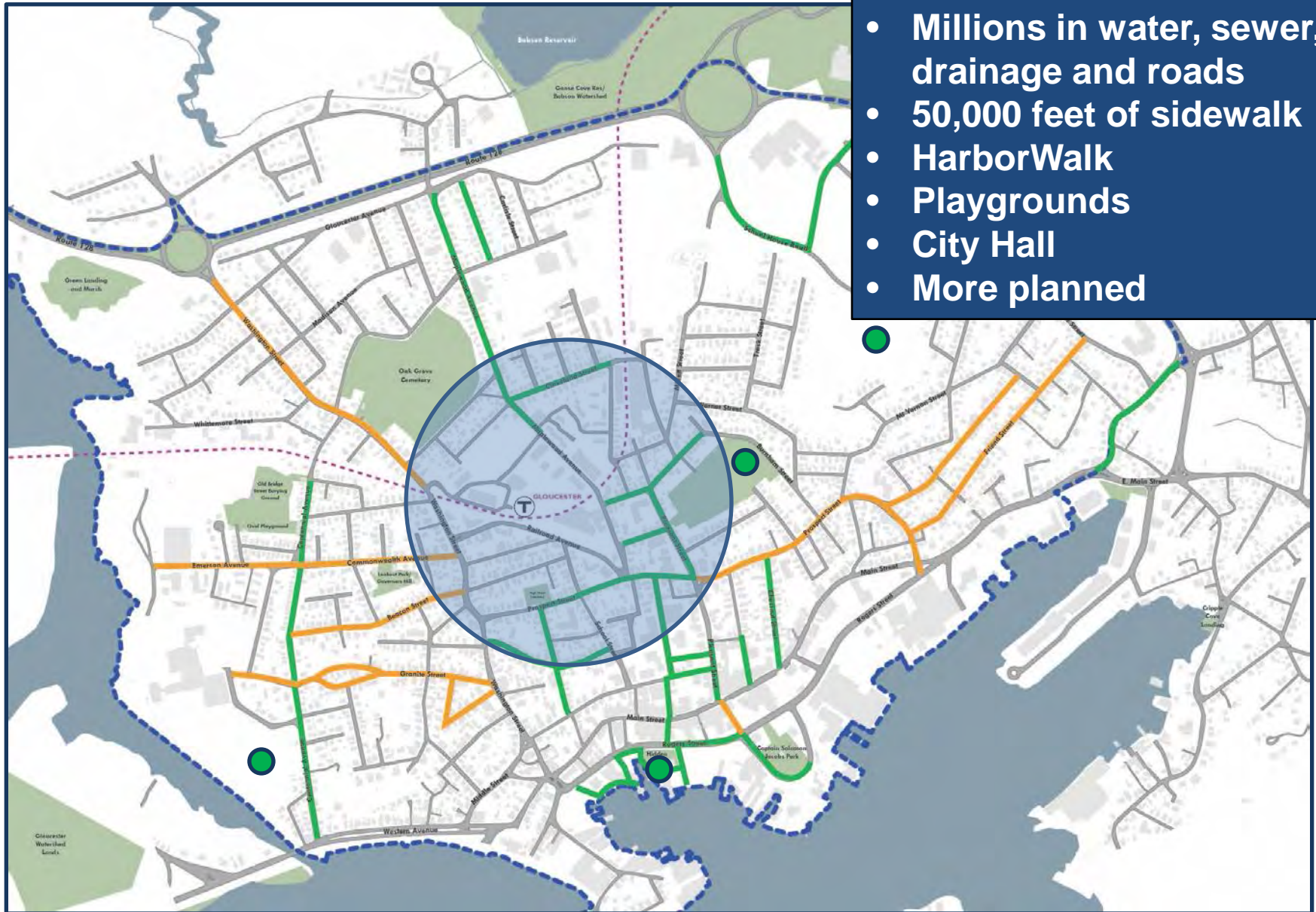


# Restaurant





## Reimagining Railroad Strengthening Connections Downtown



# Downtown Work Plan (2013)

Topics discussed: parking, accessibility and connections, streetscape, signage, visitor experience, market analyses, and building design. Uses need to consider residents first!

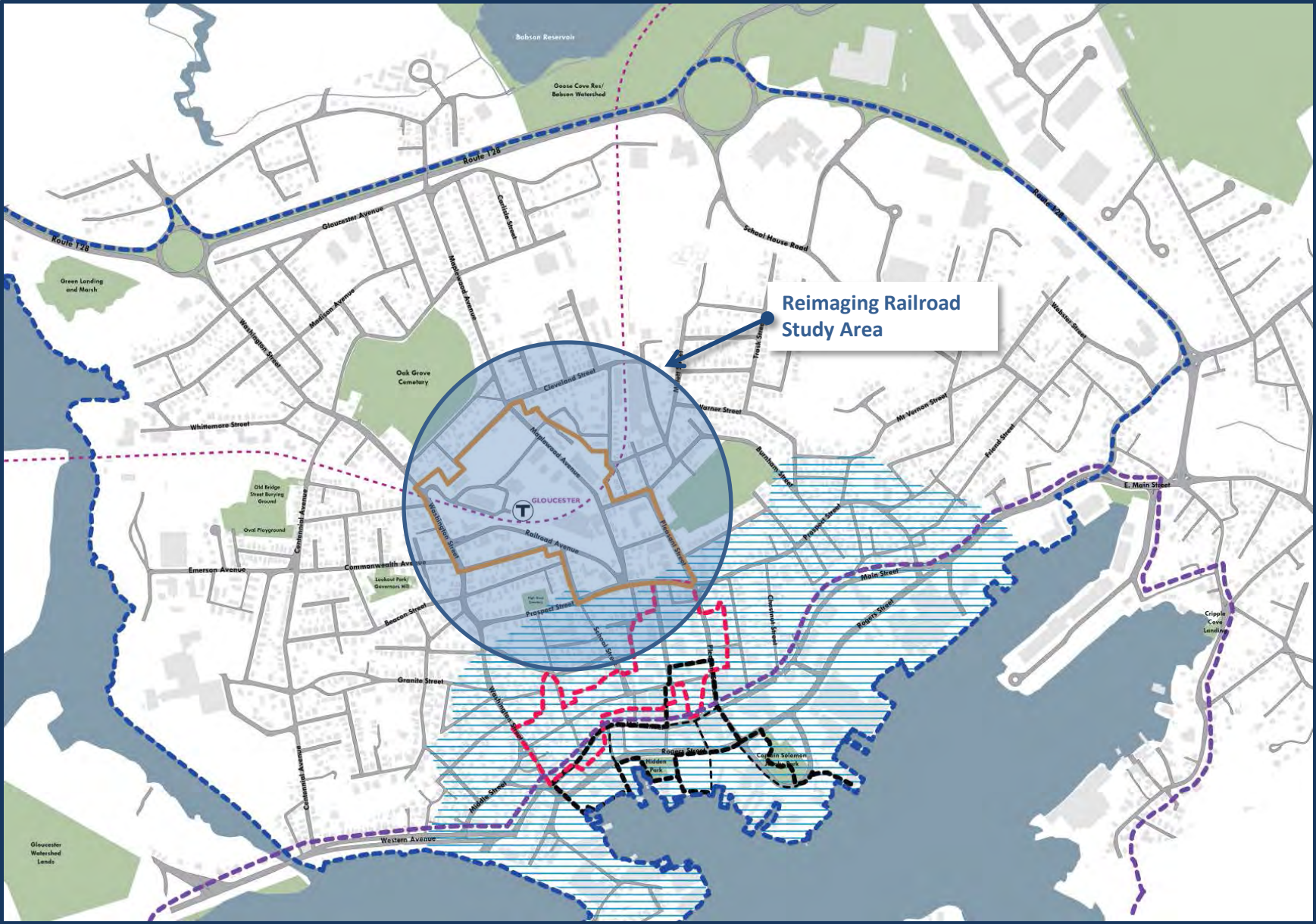
Improve connections to amenities and residential areas

**Next steps: prioritized work on primary routes including *Railroad Avenue*, *Washington Street*, and *Main Street***

Partnership opportunity with MAPC to look at how this area can best serve the community



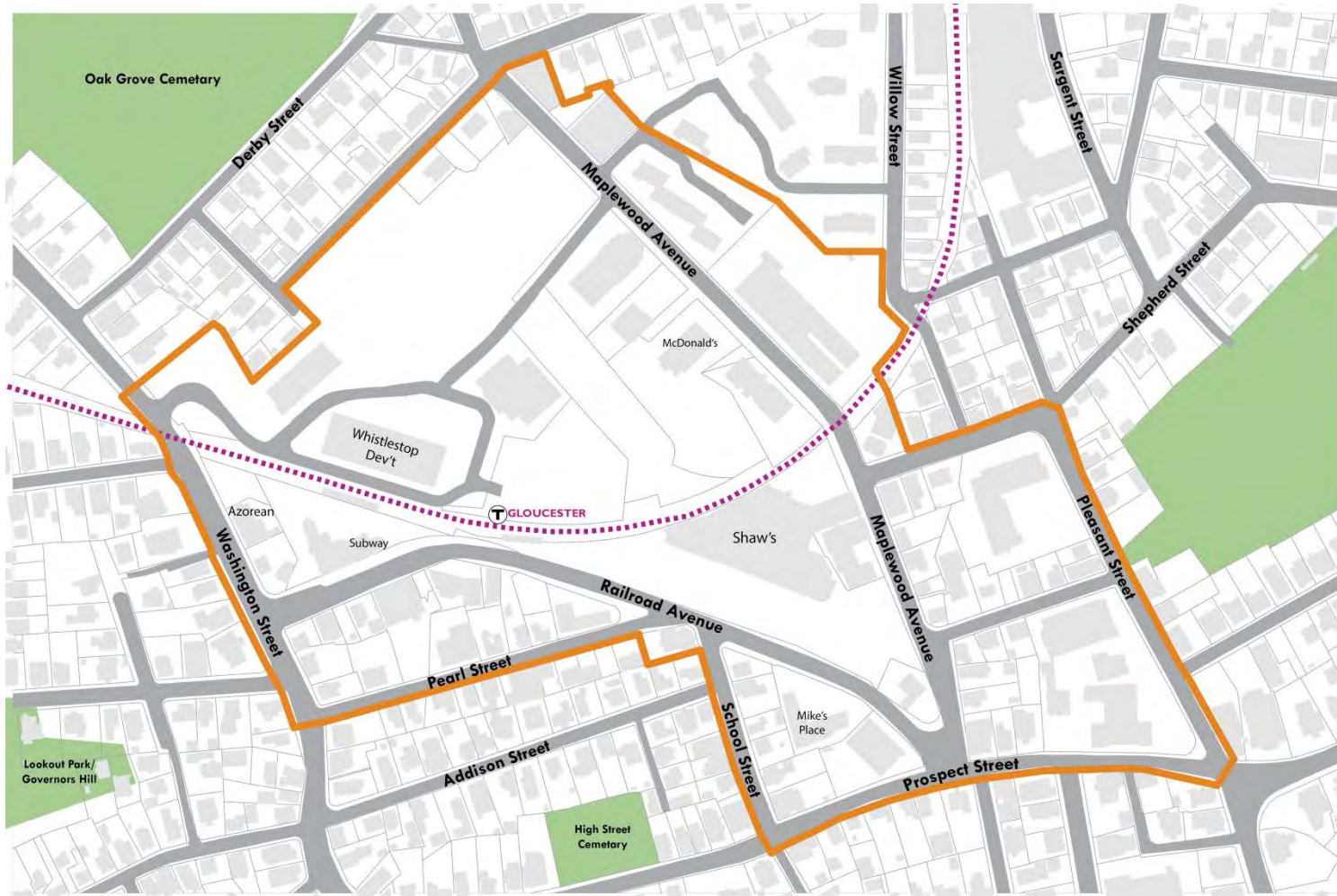
Reimagining Railroad  
Strengthening Connections Downtown



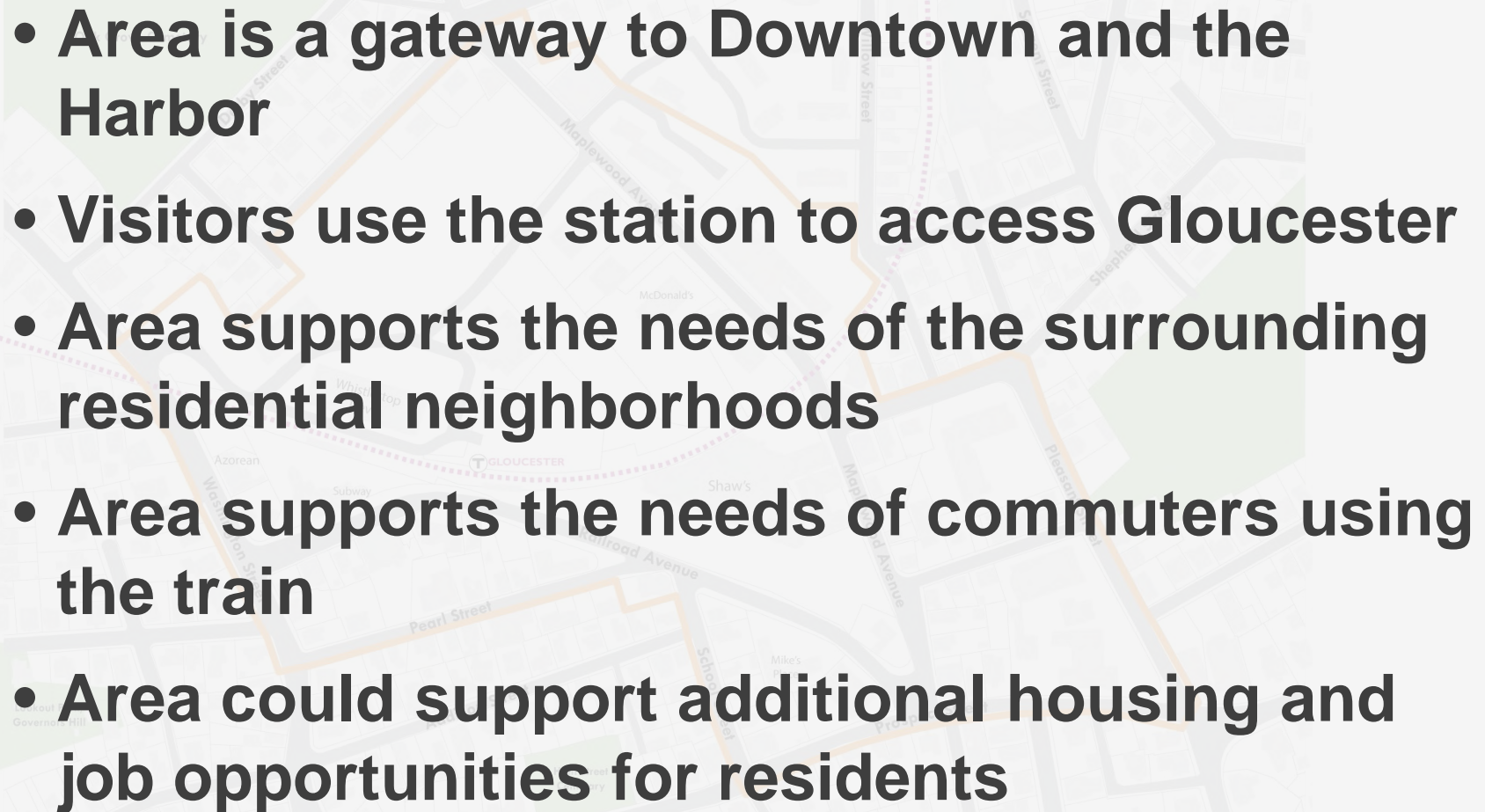


## Reimagining Railroad Strengthening Connections Downtown

# Why here?



# Why is this area important?

- 
- **Area is a gateway to Downtown and the Harbor**
  - **Visitors use the station to access Gloucester**
  - **Area supports the needs of the surrounding residential neighborhoods**
  - **Area supports the needs of commuters using the train**
  - **Area could support additional housing and job opportunities for residents**



## Reimagining Railroad Strengthening Connections Downtown





# What is transit oriented development?

A type of development that includes a mixture of housing, office, retail, and other amenities integrated into a walkable neighborhood and located within a half-mile of quality public transportation.

- *Reconnecting America*



Manchester



Newton



Chelsea



Reading

# Reimagining Railroad

## Strengthening Connections Downtown



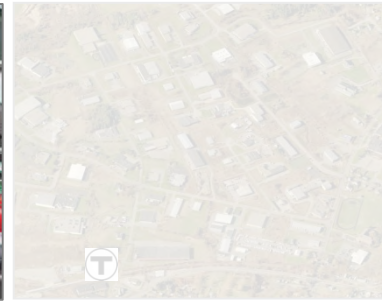
**Metro Core**



**Neighborhood  
Subway**



**Urban Gateway**



**Commerce  
Park**



**Trolley Suburb**

**Seaport /  
Airport**



**Transformational  
Subway**



**Town & Village**



**Suburban  
Transformation**



**Undeveloped**





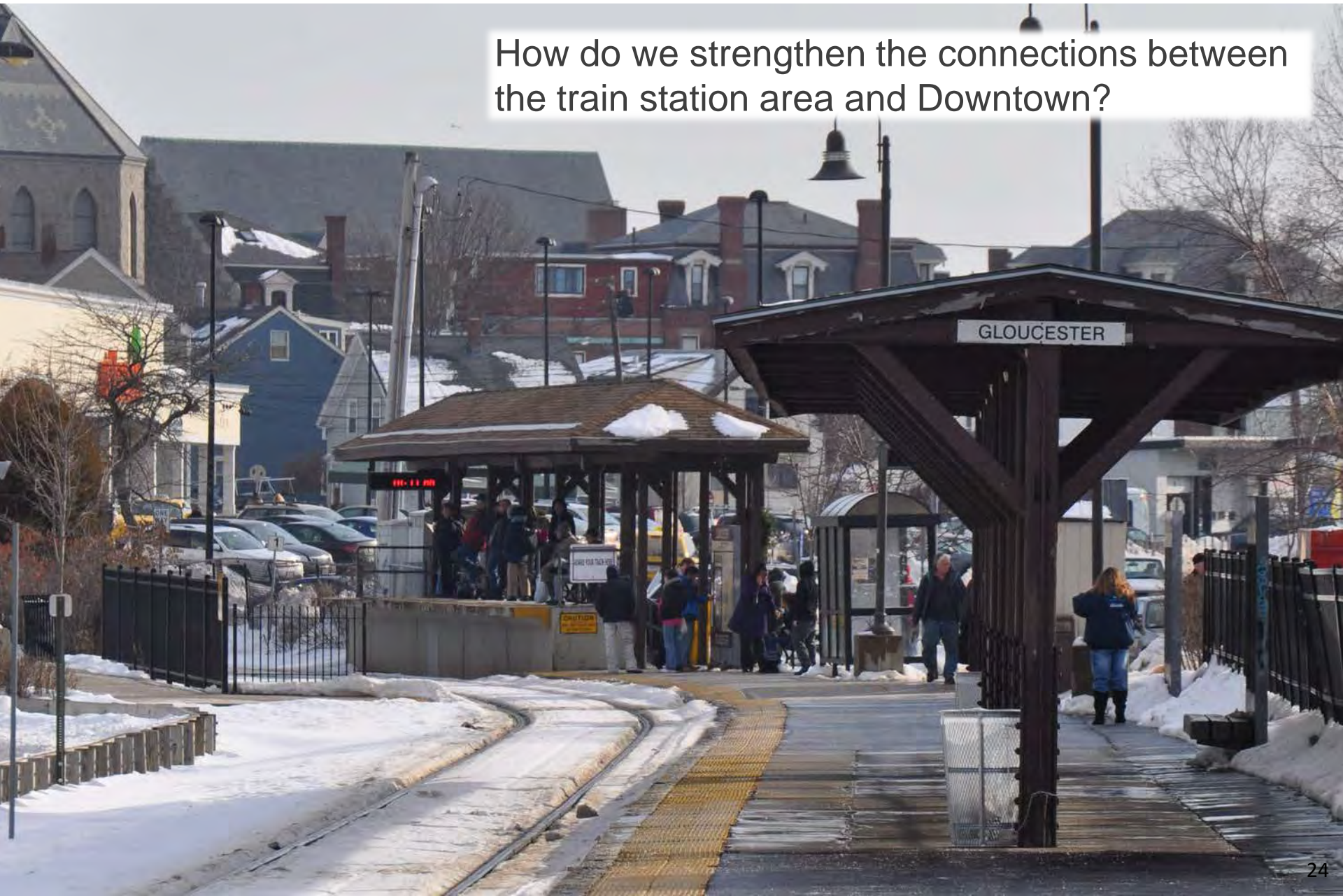
We want to hear from you!





## Reimagining Railroad Strengthening Connections Downtown

How do we strengthen the connections between the train station area and Downtown?



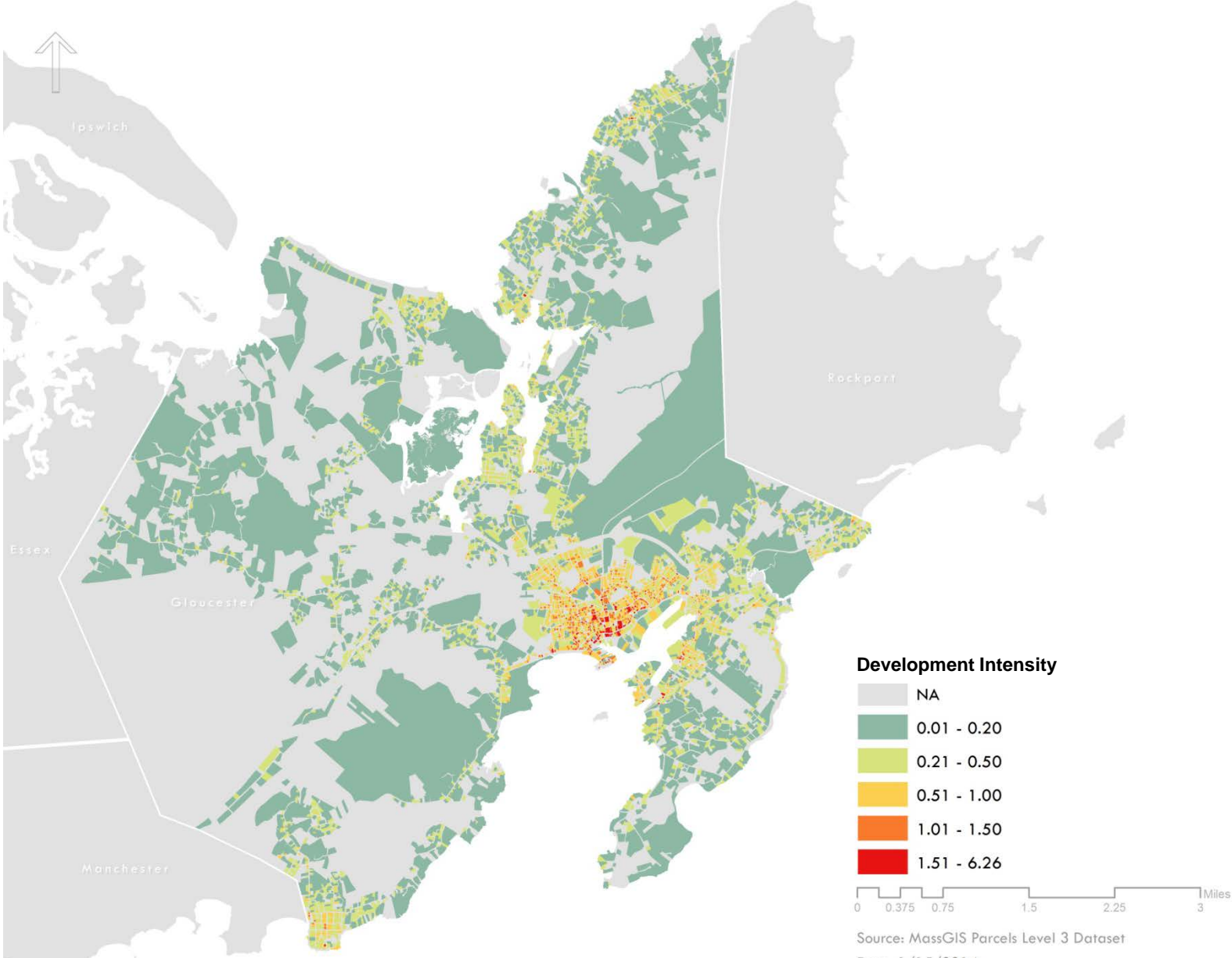


## Reimagining Railroad Strengthening Connections Downtown

What uses would support the surrounding neighborhoods and Downtown?

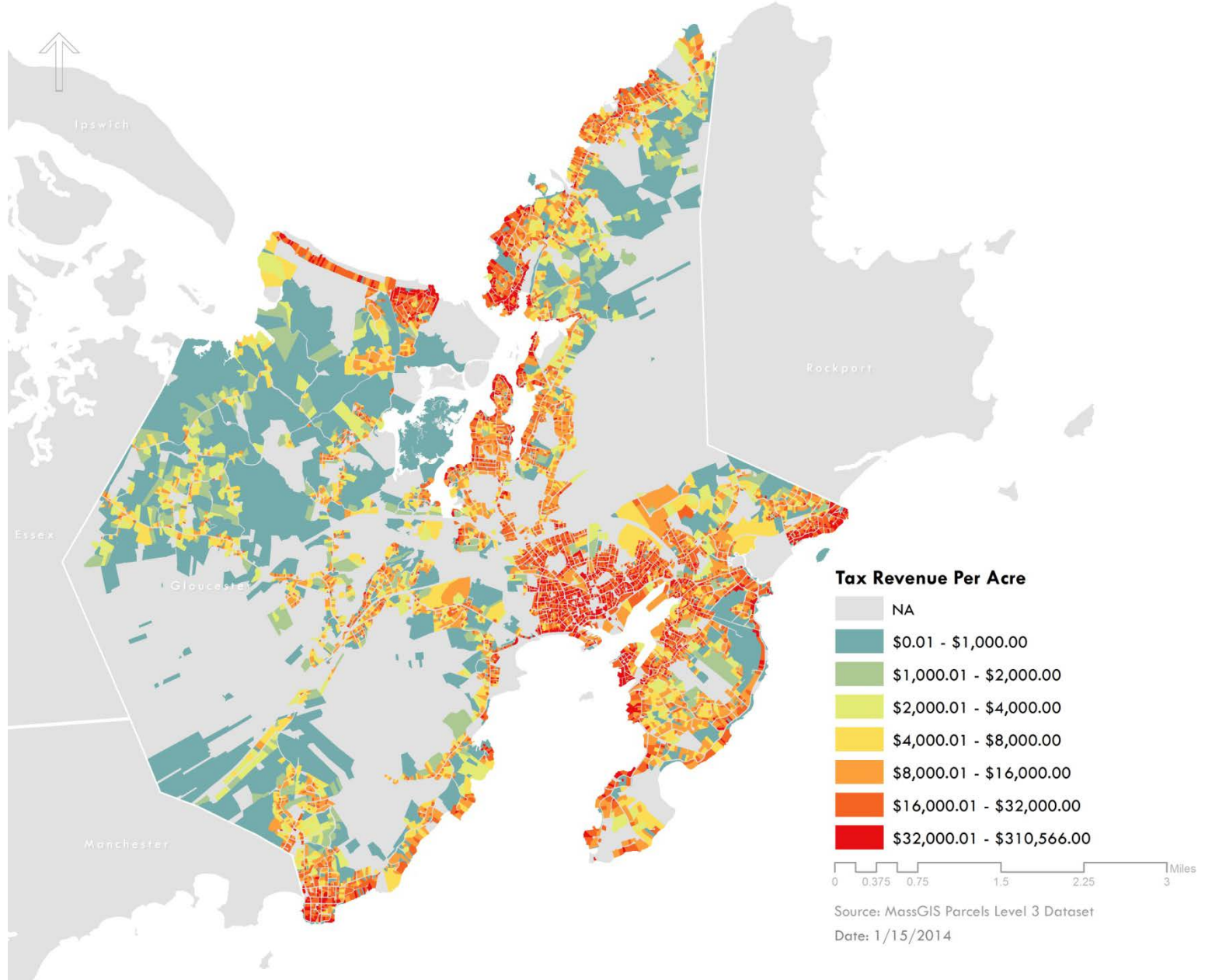


Reimagining Railroad  
Strengthening Connections Downtown



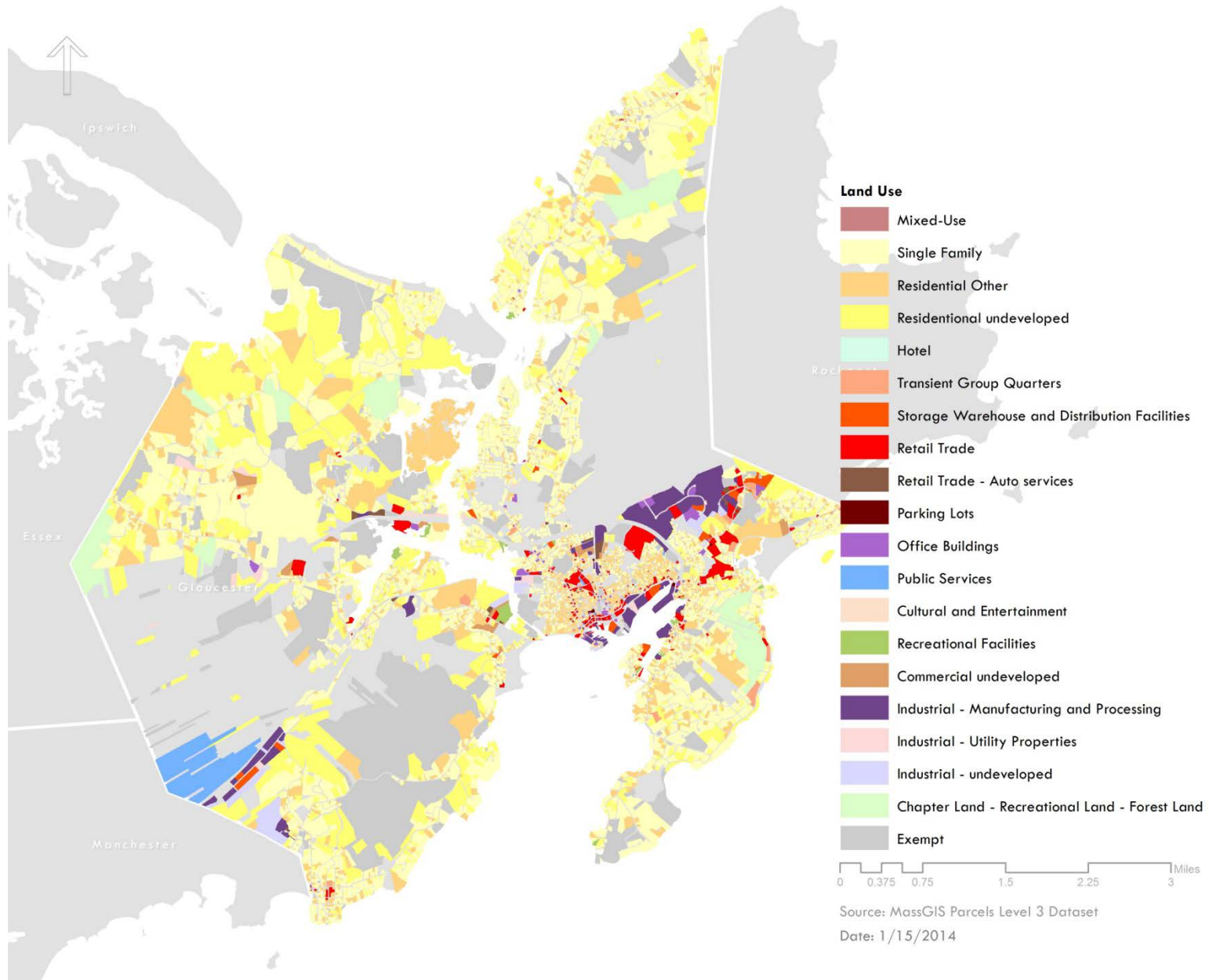


## Reimagining Railroad Strengthening Connections Downtown



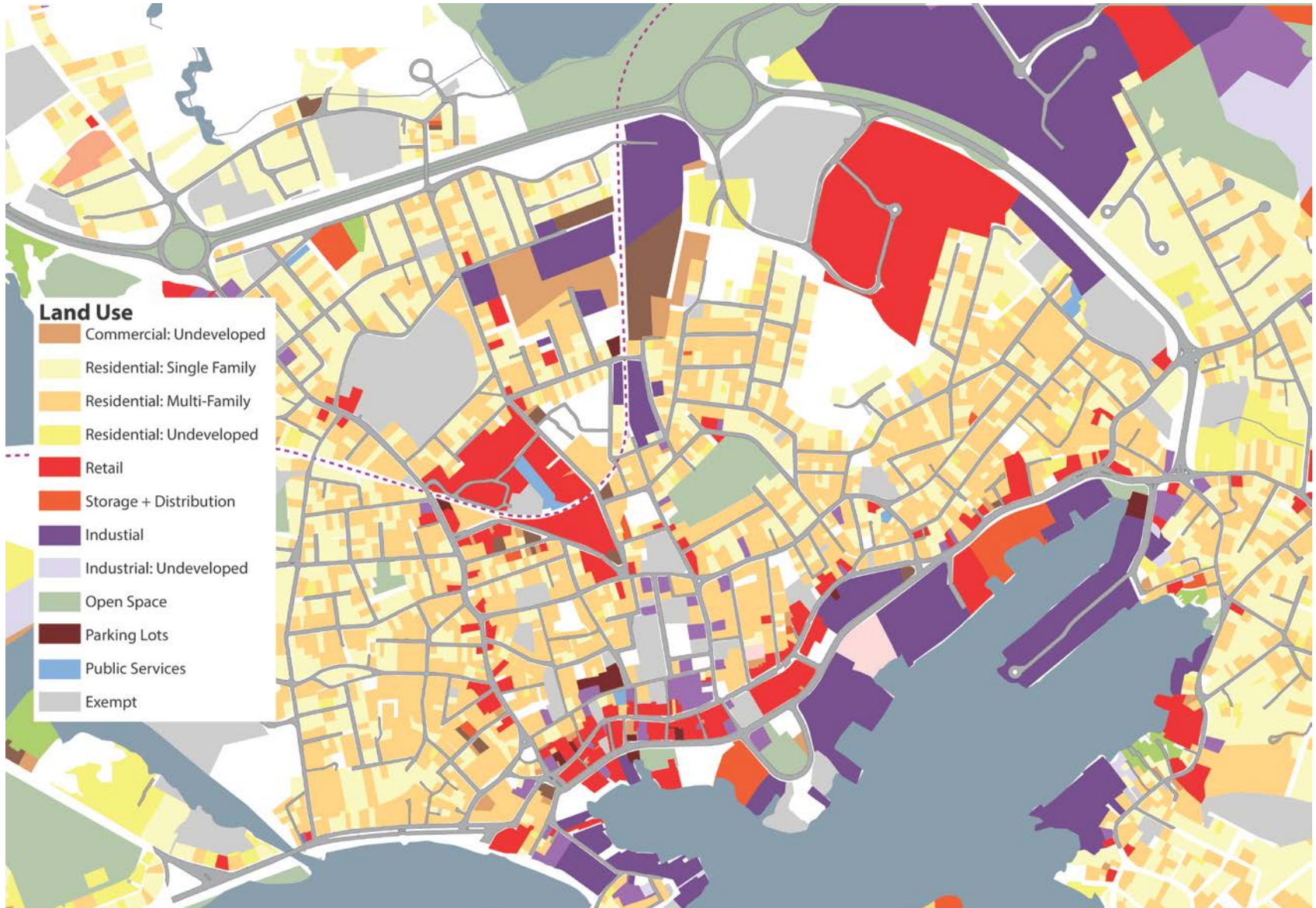
# Reimagining Railroad

## Strengthening Connections Downtown





## Reimagining Railroad Strengthening Connections Downtown



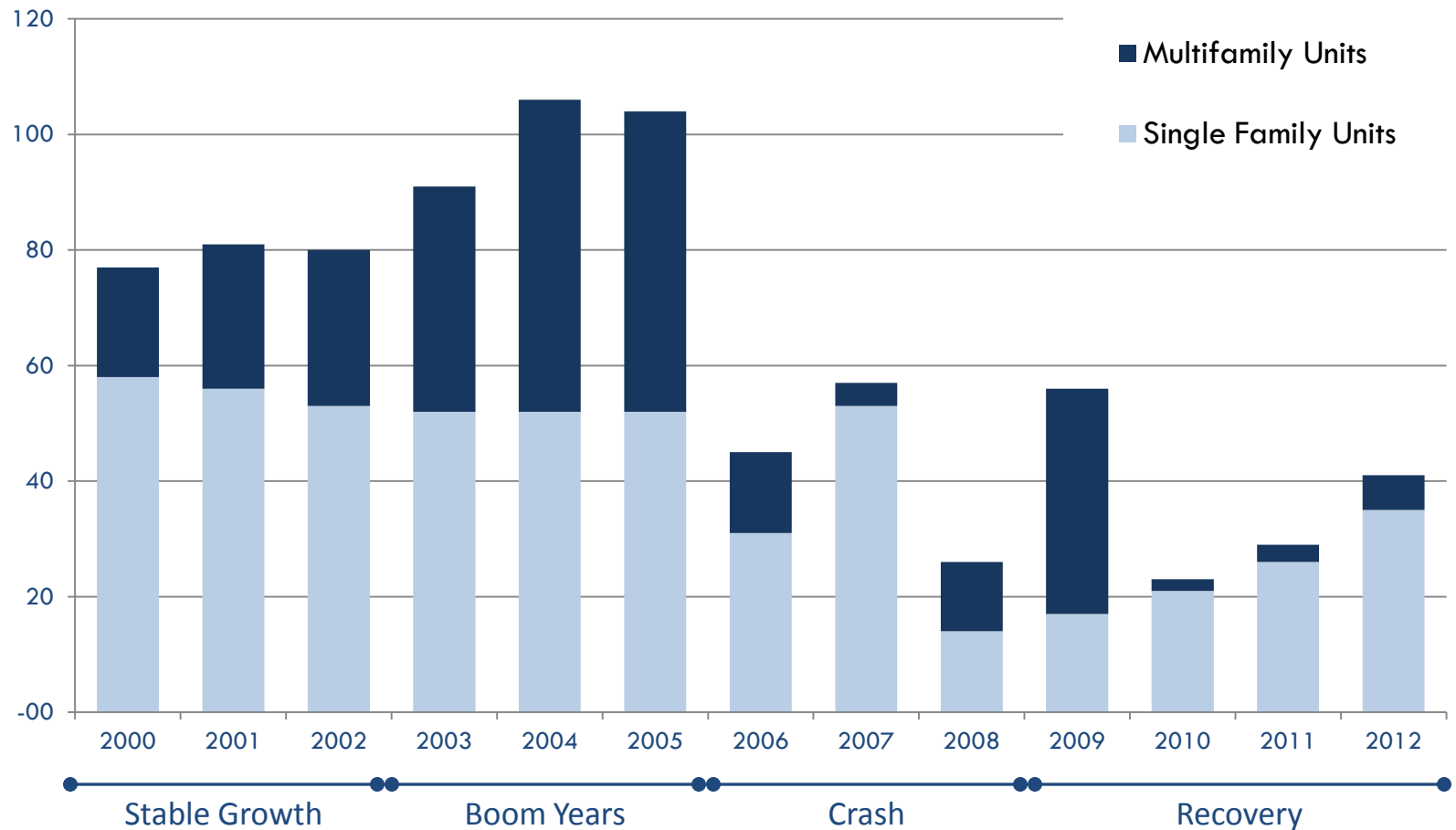
## Reimagining Railroad Strengthening Connections Downtown

Tax Levy – Residential vs. Other Uses





Gloucester Building Permits by unit type, 2000-2012



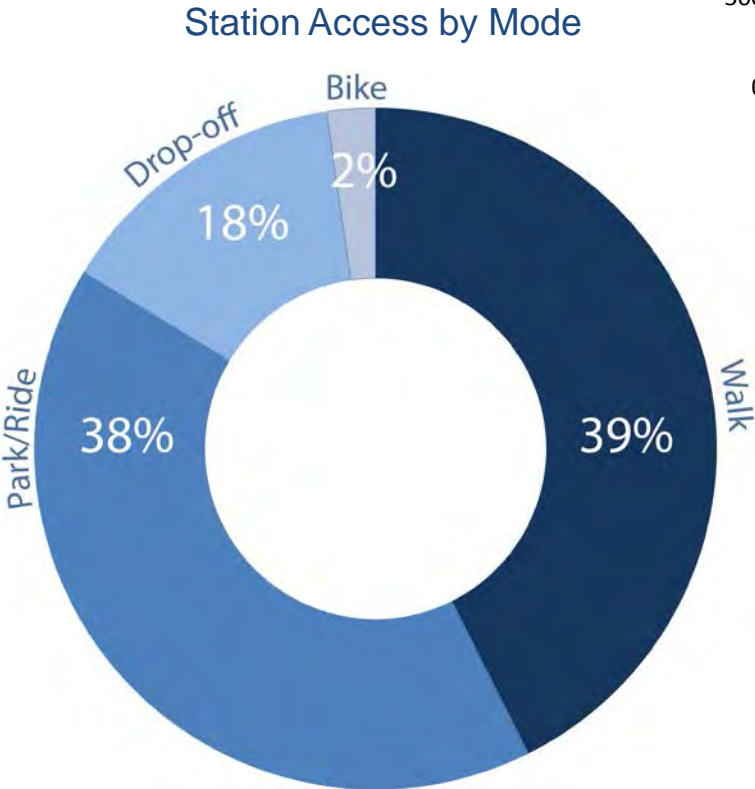
## Reimagining Railroad Strengthening Connections Downtown

How do we improve the transportation connections in the area?

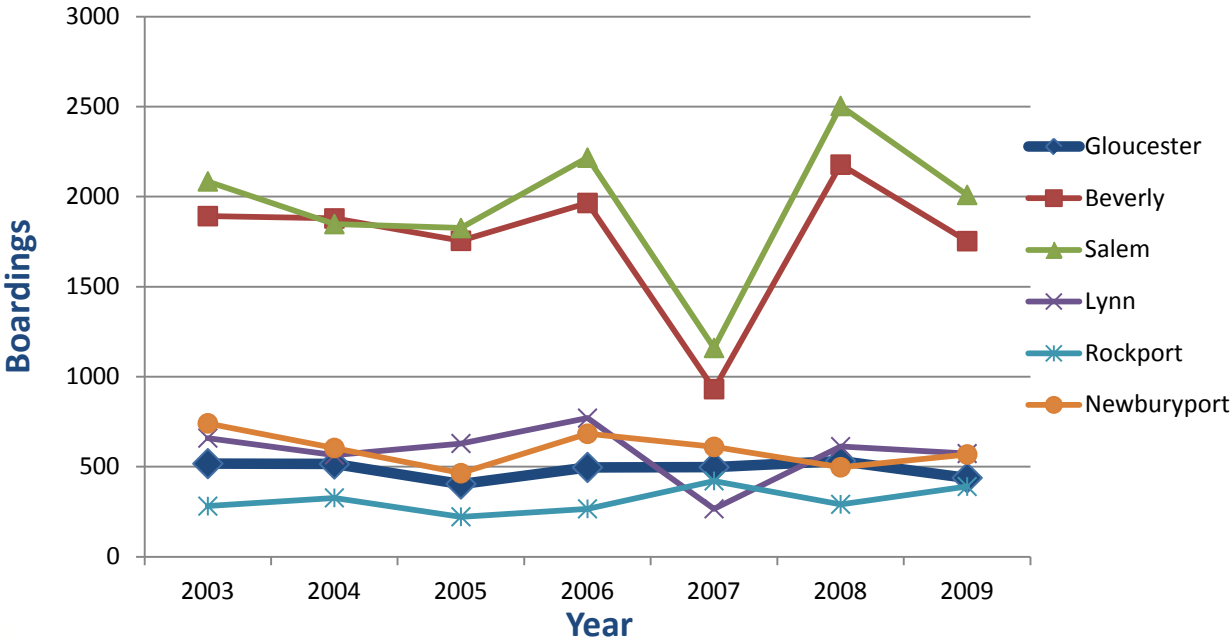




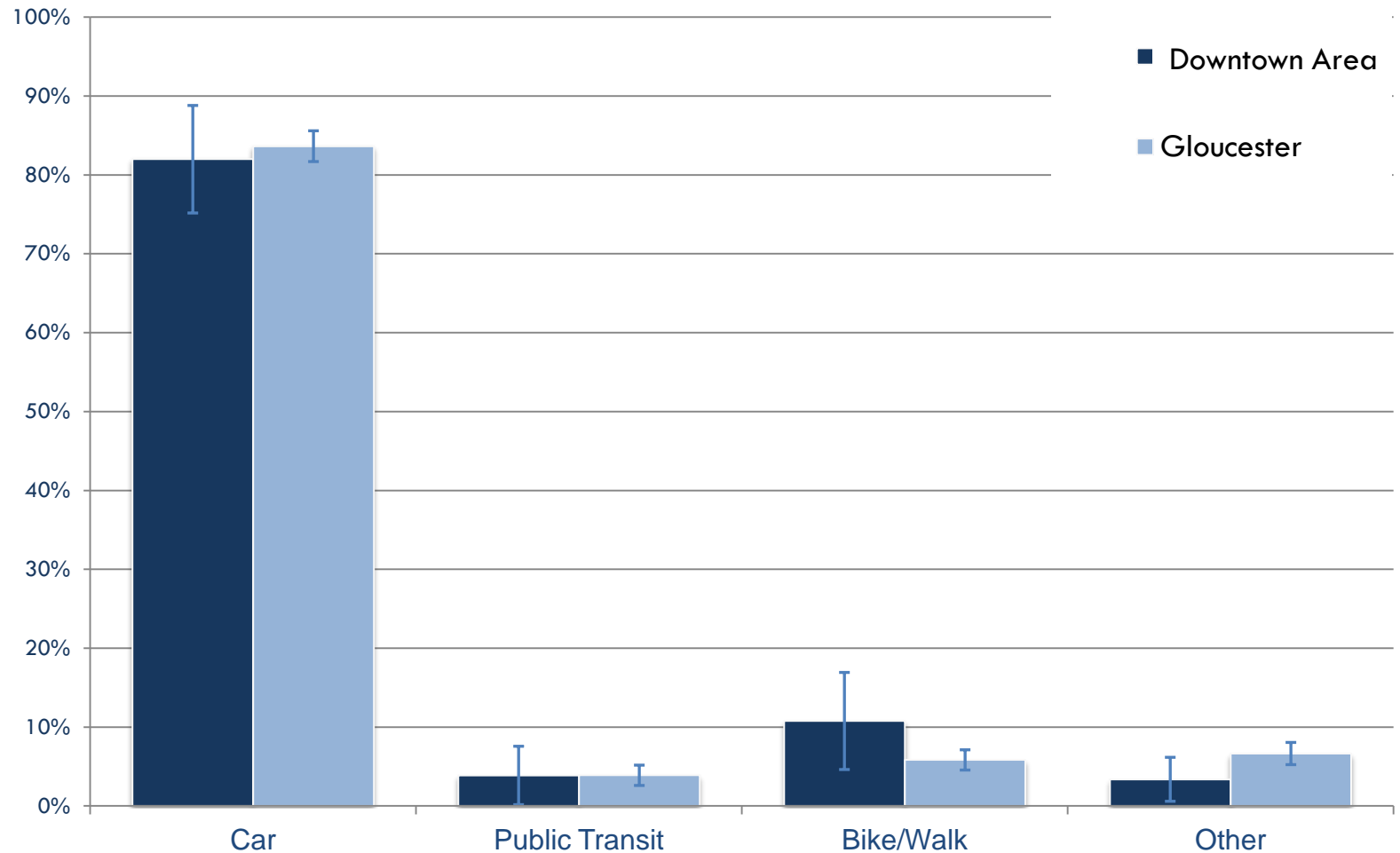
Reimagining Railroad  
Strengthening Connections Downtown



Gloucester Station Average Weekday Inbound Boardings Year



## What form of transportation do people from Gloucester use to get to work?





## Facilitated table discussions

- 45 minutes
- Each group has a facilitator to guide the discussion
- Answer discussion questions on agenda
- Report-out from a representative of each group

# Discussion Questions

1. What do you value most about the Railroad Avenue area and the adjacent neighborhoods?
2. Given regional and national housing trends, where are the best opportunities for adding housing in this area?
3. What types of businesses could support the Downtown and surrounding neighborhoods?
  - Where might these businesses be located?
4. What transportation improvements could be made within the study area and to better connect this area to the Downtown and Harbor?
  - Specifically, what improvements could be made for pedestrians, cyclists and/or transit users?