

**METROPOLITAN AREA PLANNING COUNCIL**

# **Economic Development Division**

**Betsy Cowan**

**September 19, 2018**



# Economic Development in the Inner Core

- How do we incentivize growth while also preserving affordability for small/medium businesses?
- How can we frame housing as an economic development tool? How do we meet our housing needs while balancing the needs of other uses (industrial, commercial)?
- How do we support an increasingly diverse workforce and facilitate access to workforce opportunities throughout the region?



# Economic Development at MAPC

- MAPC's economic development group provides stakeholders in the region (municipalities, regional organizations, state entities) with
  - equitable economic development plans
  - policy analyses
  - and wealth creation strategies
- with the goal of expanding access to
  - quality employment
  - entrepreneurship
  - and real estate
- and works to facilitate the inclusion of these plans, analyses and tools in government processes.





# Economic Development: Current Projects

- Economic Development Plans:
  - Visioning sessions
  - Market Analysis
  - Land Use Analysis
  - Final report with key next steps



## Grow Smart Norwell

A Forum on Strategic Economic Development

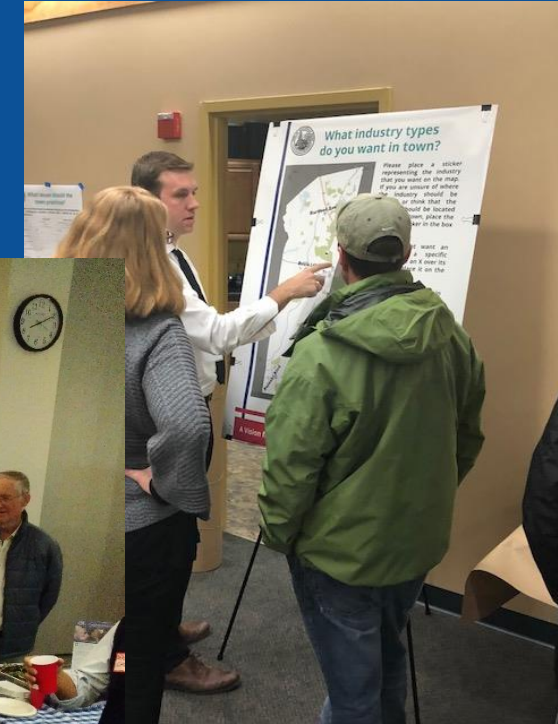
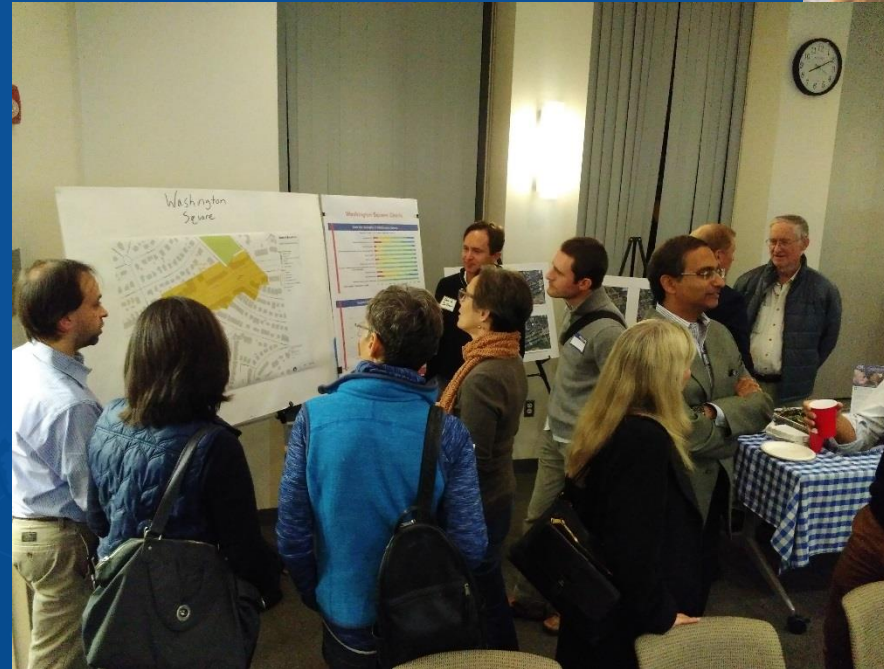


Photo Credit: MAPC

# Economic Development: Current Projects

- Red Line Life Sciences Project:

- Market analysis
- Stakeholder interviews
- Recommendations for recruitment, retention strategies



Photo Credit: 42Floors.com, Social Security Locator



# Economic Development: Current Projects

- **Creative Economy Project in Uphams Corner, Boston:**
  - Strategies to create an Arts & Innovation District to manage neighborhood change & mitigate displacement
  - Research on commercial displacement
  - Stakeholder interviews
  - Policy and program recommendations



# Economic Development: Current Projects

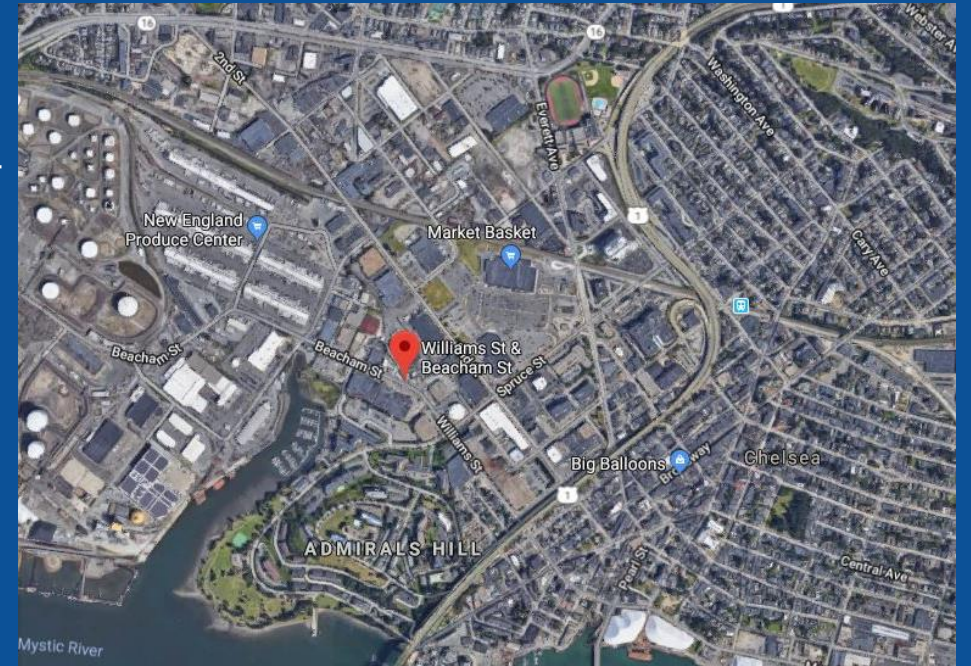
- Lynn Hospital Re-Use Project:
  - Market Analysis (using CoStar)
  - Scenario Testing based on current and potential zoning
  - Final recommendations





# Economic Development: Current Projects

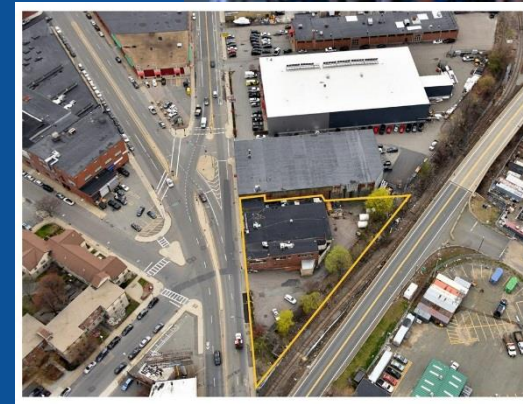
- Economic Development Administration Grant Assistance:
  - Labor market projections to demonstrate project impact
  - Assistance with grant development and communication with EDA staff
  - \$3M Chelsea Roadway Improvement Project





# Economic Development: Future Projects

- Potential Projects:
  - Commercial affordability
  - Industrial Land Use Analysis
  - Housing as Economic Development Tool
  - Economic Development network to share best practices, provide training
- Long-Term
  - Equitable Economic Development project



# MAPC Economic Development Division

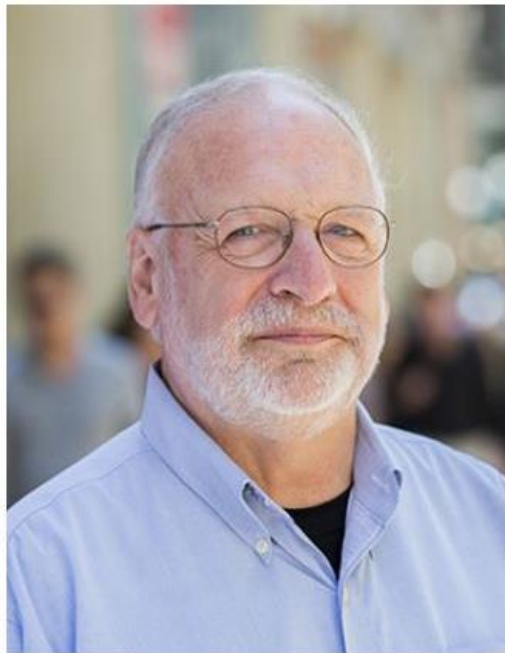


**Betsy Cowan**

*Economic Development Manager*

[bcowan@mapc.org](mailto:bcowan@mapc.org)

617-933-0746



**Steve Winter**

*Principal Economic Development Planner*

[swinter@mapc.org](mailto:swinter@mapc.org)

617-933-0753



**Josh Eichen**

*Regional Planner II*

[jeichen@mapc.org](mailto:jeichen@mapc.org)

617-933-0722



**Raul Gonzalez**

*Economic Development Planner*

[RGonzalez@mapc.org](mailto:RGonzalez@mapc.org)

617-933-0763