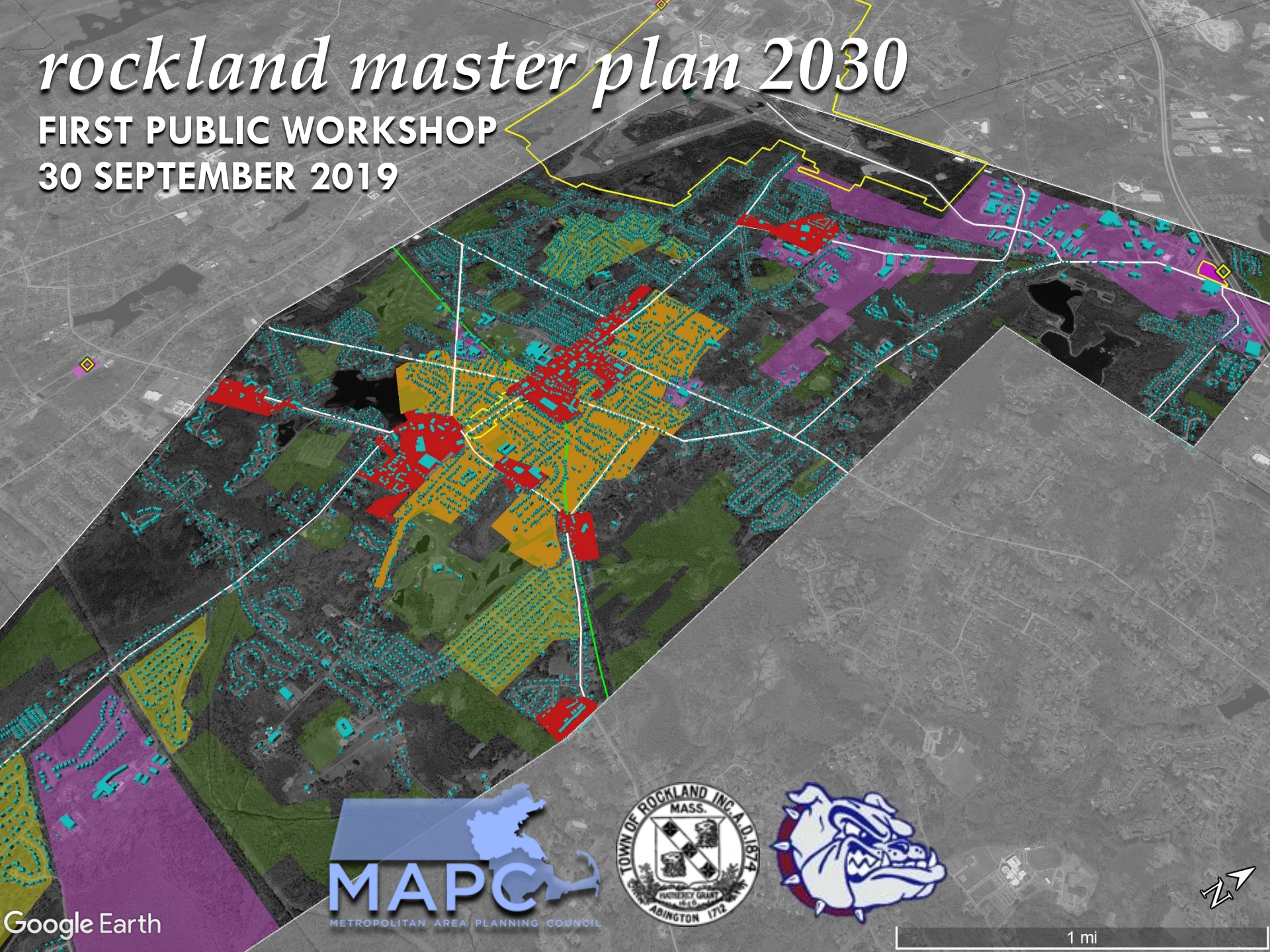


rockland master plan 2030

FIRST PUBLIC WORKSHOP

30 SEPTEMBER 2019



Google Earth



1 mi

INTRODUCTIONS & AGENDA

6:30pm

intros

6:40pm

WHY MASTER PLAN?

6:50pm

process & outreach,
background & context

7:10pm

TONIGHT'S PARTICIPATORY EXERCISES

8:30pm

leave us your paper ballots

WHY MASTER PLAN?

YOUR INPUT CAN INFORM RECOMMENDATIONS

SHAPE SPECIFIC PARTS OF TOWN:
growth, improvement and/or preservation

INFORM DECISIONS
future zoning, investment and development

PROVIDE MUTUAL CERTAINTY
for residents and businesses alike

LEAVE A LEGACY
for the next generation



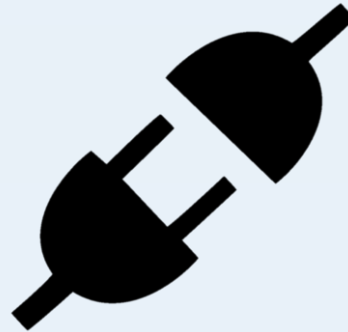
WHY MASTER PLAN?



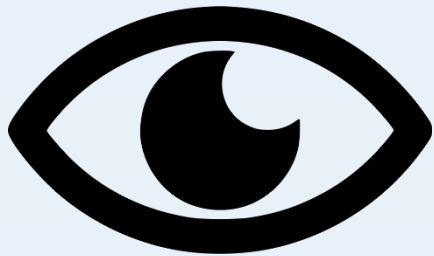
*community
input*



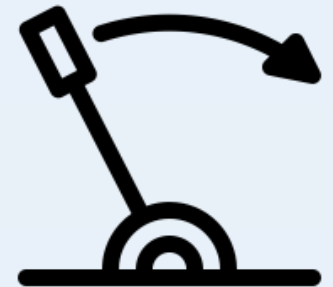
*goals &
recommendations*
SPECIFIC & ACTIONABLE



CONSISTENCY



*vision
statement*



decisions & actions
ZONING, INVESTMENT, MARKETING

PROCESS & OUTREACH

committee meetings 2 thus far

outreach flyers posted, social media

ONLINE SURVEY Oct 4 to Jan/Feb 2020 – also translated
mapc.org/rmp2030

PUBLIC WORKSHOPS

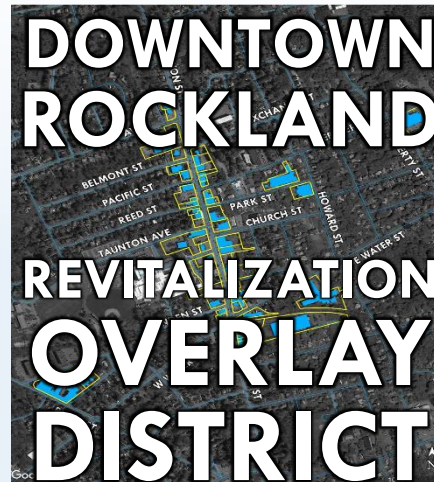
- ① background, key issues, exercises to tease out goals & vision
- ② economic development, public facilities, transportation
- ③ housing, sustainability/energy, natural/historic/cultural resources
- ④ draft plan, vision, analysis, recommendations

BACKGROUND & CONTEXT

2016



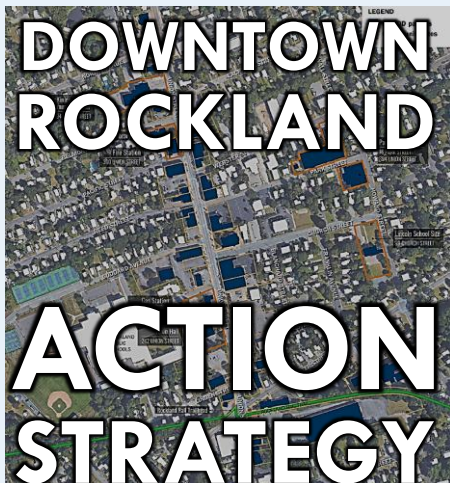
2017



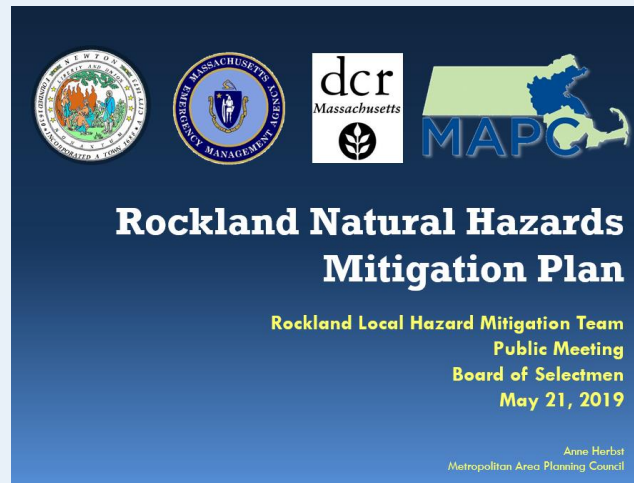
2018



2019



2019



2019



BACKGROUND & CONTEXT

2019



2019



KEY FINDINGS – PRIOR STUDIES

COST-BURDENED

- 2 out of 5 households – spend more than 30%
- 1 in 5 spend more than 50% on housing

AGING POPULATION

- growing from 32% of total householders in 2010 to 45% of householders in 2030

TOWN SEWER CAPACITY

- 2011 ordinance – rigorous requirements for connections
- developers must buy capacity on per unit basis

KEY INDUSTRIES

- construction | health care/social assistance
- professional/technical services
- 570 employers – 7627 workers
- largest employers: North River Collaborative, & Partners Health Care at Home

HOUSING DEMAND & OPTIONS

- seniors' changing needs/preferences
- younger householders entering market

TOWN SHI COMPLIANCE

- 6.3% of Town housing in the Subsidized Housing Inventory,
- which is short of the 10% statutory minimum
- **min. 35 to 37 annual units** – between 2016 and 2021 **for Ch. 40B relief**

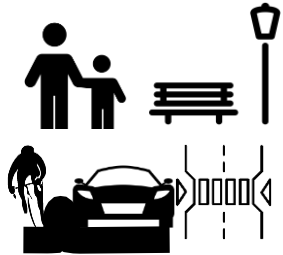
INFRASTRUCTURE UPGRADES

- MVP study highlights conditions of Studleys Pond Dam, aging/undersized sewer, fire station, McKinley School; & brushfire trucks and generator needs

KEY PLANNING CHALLENGES FACING TOWN



**SEWER
TREATMENT
CAPACITY**



**STREETSCAPE
IMPROVEMENTS**



**IMPROVE
PUBLIC
FACILITIES**



**DESIRED JOBS & BUSINESSES,
WORKERS SHOP LOCALLY**



**NEEDED HOUSING,
SUPPORTS RETAIL**



LEISURE RETAIL



VISITORS & SHOPPERS



MICROTRANSIT OPTIONS

TWO ACTIVITIES TONIGHT

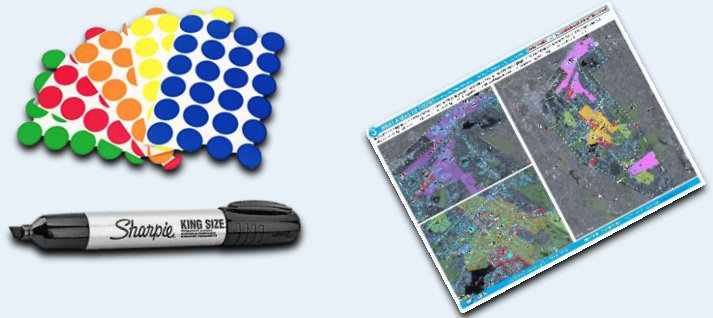
YOUR FEEDBACK ON

1

8 VISION COMPONENTS



WHERE IN TOWN?



2

**12 KEY QUESTIONS
ON POSTERS**



ANSWER ON PAPER SURVEY



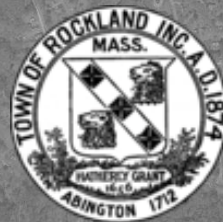
rockland master plan 2030

FIRST PUBLIC WORKSHOP

30 SEPTEMBER 2019

thank you

Google Earth



1 mi