



# Expanding Local Public Health Capacity

MWRC  
September 24







HEALTH starts—long before illness—in our homes, schools, and jobs.

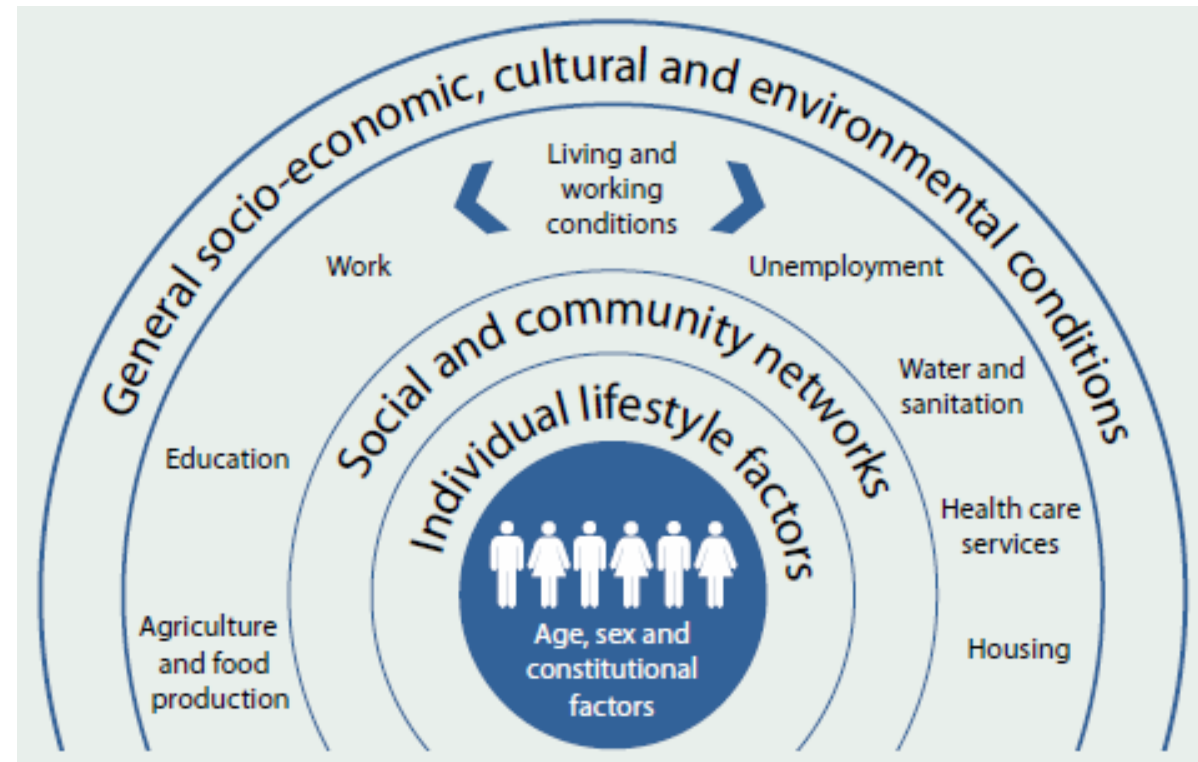






# Who is MAPC: Public Health Department

Social determinants of health as a guiding framework for how we think and conduct our work



Source: Dahlgren & Whitehead 1991.



# Who is MAPC: Public Health Department



**HEALTHY COMMUNITY  
DESIGN**



**HEALTH AND EQUITY  
ASSESSMENTS**



**FOOD SYSTEMS AND  
HEALTHY FOOD ACCESS**



**LOCAL PUBLIC HEALTH  
COLLABORATION AND  
SHARED SERVICES**



# Who is MAPC: Municipal Collaboration



COOPERATIVE  
PURCHASING



INTER-MUNICIPAL  
AGREEMENTS



GRANT  
MANAGEMENT



SPECIAL PROJECTS  
AND STUDIES



# Why we work with LPH

- Decentralized local public health system: 351 individual BOHs
  - Disparities in funding, staffing size, and public health functions and services
- Protection, promotion and prevention
  - LPH departments play an important role in shaping resident's health outcomes
- Special Commission on Local and Regional Health





# Examples of MAPC's LPH work

Looser  
Integration

Tighter  
Integration

## As-Needed Assistance

- Information sharing
- Equipment sharing
- Assistance for surge capacity

## Service-Related Arrangements

- Service provision agreements (e.g., contract to provide immunization services)
- Purchase of staff time (e.g., environmental health specialist)

## Shared Programs or Functions

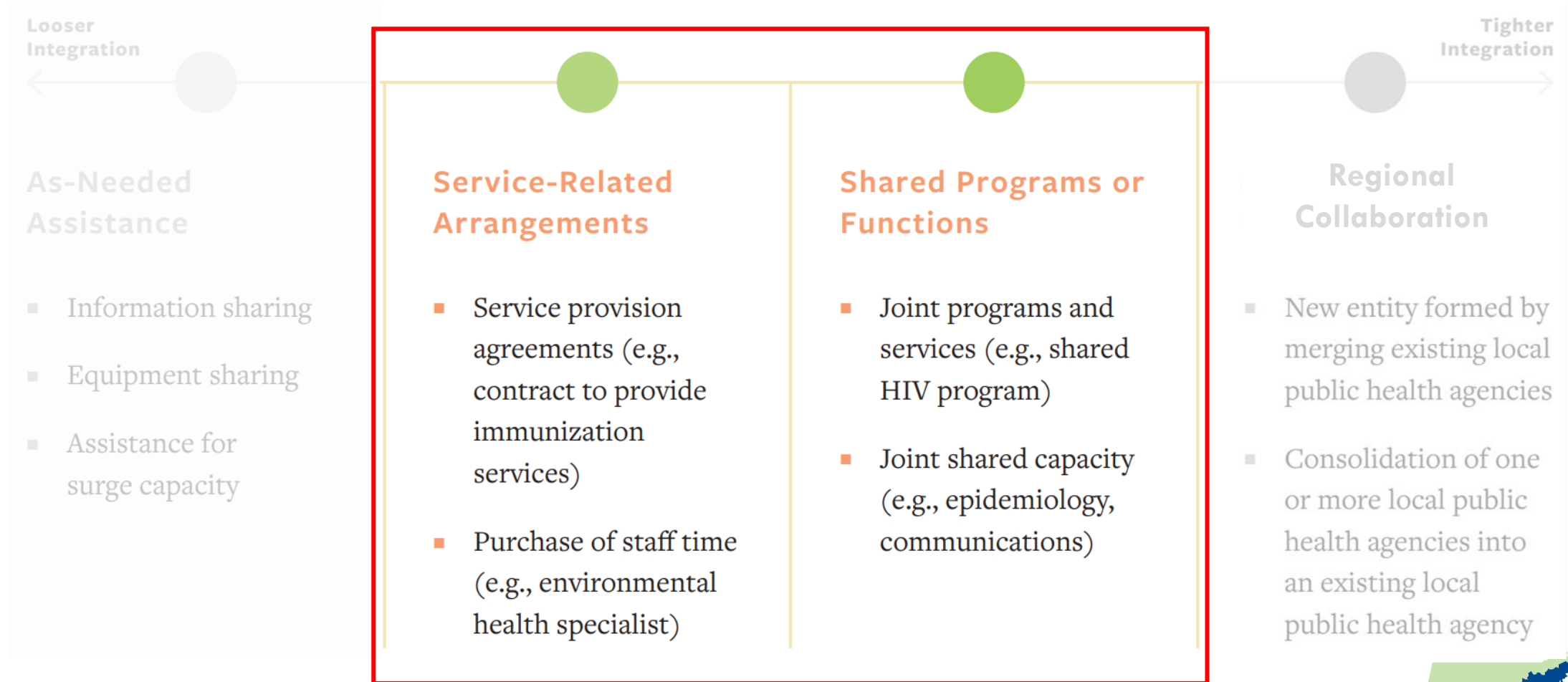
- Joint programs and services (e.g., shared HIV program)
- Joint shared capacity (e.g., epidemiology, communications)

## Regional Collaboration

- New entity formed by merging existing local public health agencies
- Consolidation of one or more local public health agencies into an existing local public health agency



# Examples of MAPC's LPH work







# Examples of MAPC's LPH work

Type of project	Local Health Department Capacity Building	Local Health Department Collaboration	Multi Sector Collaboration
Municipality	Salem: Exploring Organizational Structures of the Health Department	<b>MetroWest Public Health Nursing District</b>	Revere, Winthrop, Chelsea: Integrated Community Health Needs Assessment & Community Health Improvement Plan
Impact/ Outcome	1) Additional FT staff added to PH dept. 2) Leveraged outside funding 3) Rebuilding and establishing trusting relationship with business community	1) <b>Hiring of a shared PHN</b> 2) <b>Achieving state required reporting (MAVEN)</b> 3) <b>Enhancing PH programming</b>	1) Hired shared Collaborative coordinator 2) Developed joint health assessment and improvement plan

# Questions?