

Puget Sound Climate Preparedness Collaborative

Reflections on working at scale

Lara Whitely Binder
King County Climate Preparedness Program Manager
Co-chair, Puget Sound Climate Preparedness Collaborative

PUGET SOUND Climate
Preparedness
Collaborative

Bellingham

Mount
Vernon

**PUGET
SOUND
BASIN**

Everett

Seattle

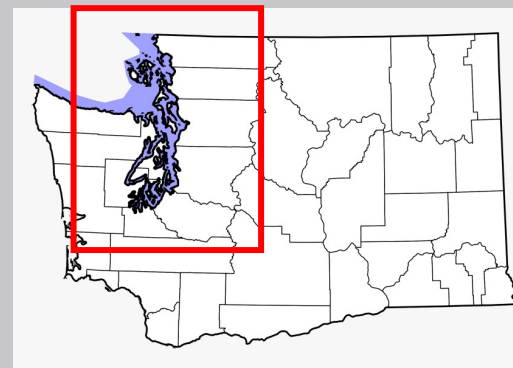
Tacoma

Olympia

Port
Angeles

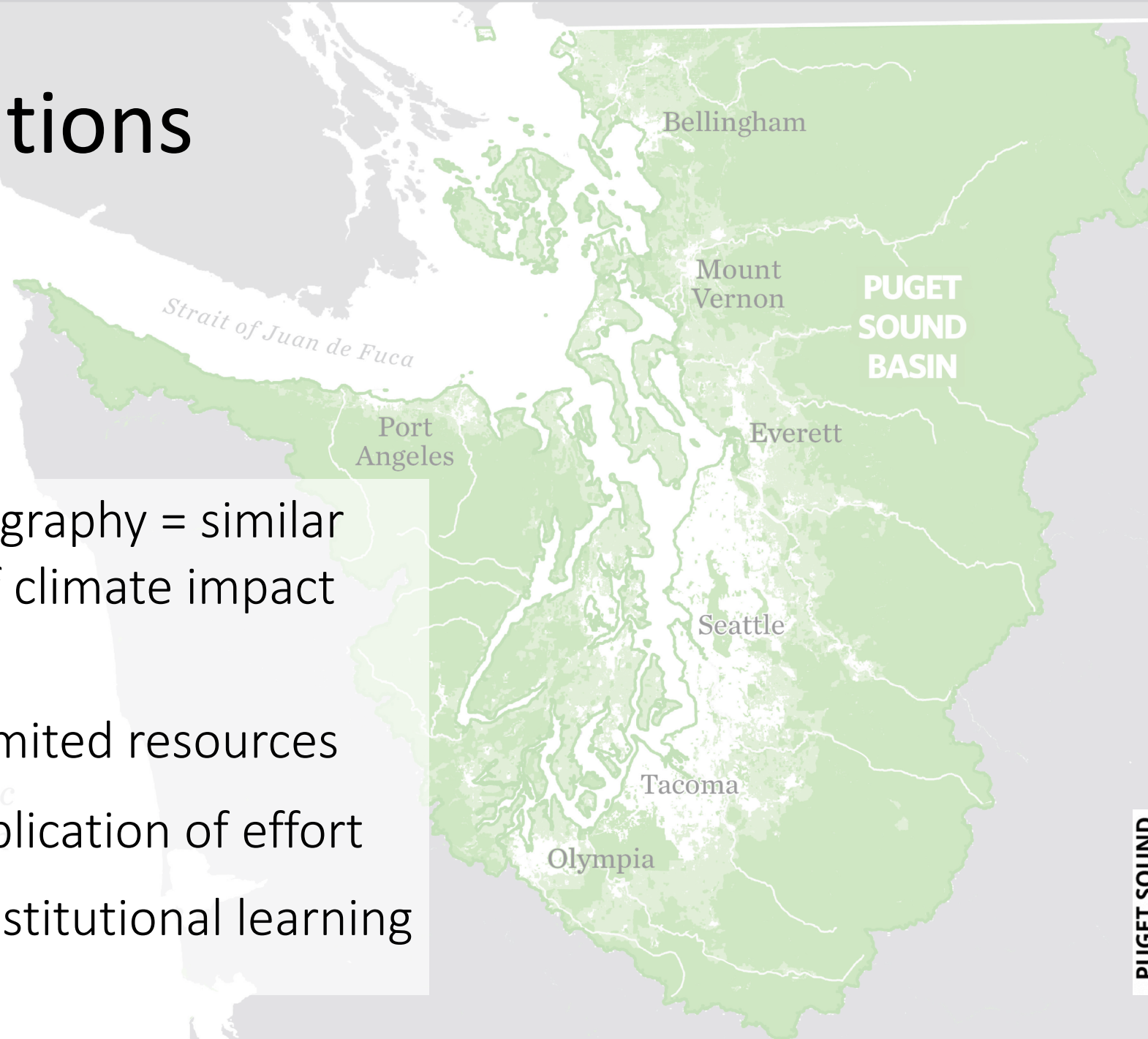
Strait of Juan de Fuca

*Pacific
Ocean*



Motivations

- Shared geography = similar portfolio of climate impact concerns
- Leverage limited resources
- Reduce duplication of effort
- Facilitate institutional learning



**Climate
Preparedness
Collaborative**



Seattle



King County



Snohomish County



Tacoma



Redmond
WASHINGTON



THE NORTHWEST
SEAPORT ALLIANCE

Puget Sound Regional Council
PSRC



SOUNDTRANSIT



Port
of Seattle®

Sea Grant
Washington



The Emerald Alliance



Parametrix
ENGINEERING . PLANNING . ENVIRONMENTAL SCIENCES

Early action – under grant funding

Building the structure

- Monthly Steering committee calls
- By-laws
- Membership structure & process for joining
- Strategic plan
- Annual work plan

External facing activities:

- Public convenings on different topics
- Periodic webinars
- Website buildout

Challenges:

- Sustained funding for program officer
- Sustaining discussions with stakeholders – “random acts” problem

Refocusing – no grant funding

Rescaling efforts to focus on what participants value:

- Information sharing, discussion
- Building peer network
- Workshopping ideas and challenges

Focus is on maximizing value of the monthly call. Will look for project-based grant opportunities.

Priorities for 2022:

- Support Comprehensive Plan updates
- Build organizational capacity for climate preparedness
- Track/be responsive to state and federal legislative action
- Bridge climate preparedness and hazard mitigation planning gap

Reflections on Working at Regional Scale

Caveat: my viewpoint only based on experience to date, not speaking for the Collaborative

There is more to show for regional action on **mitigation**. *Hypothesis:* Building a common framework for joint action is easier for mitigation than adaptation.

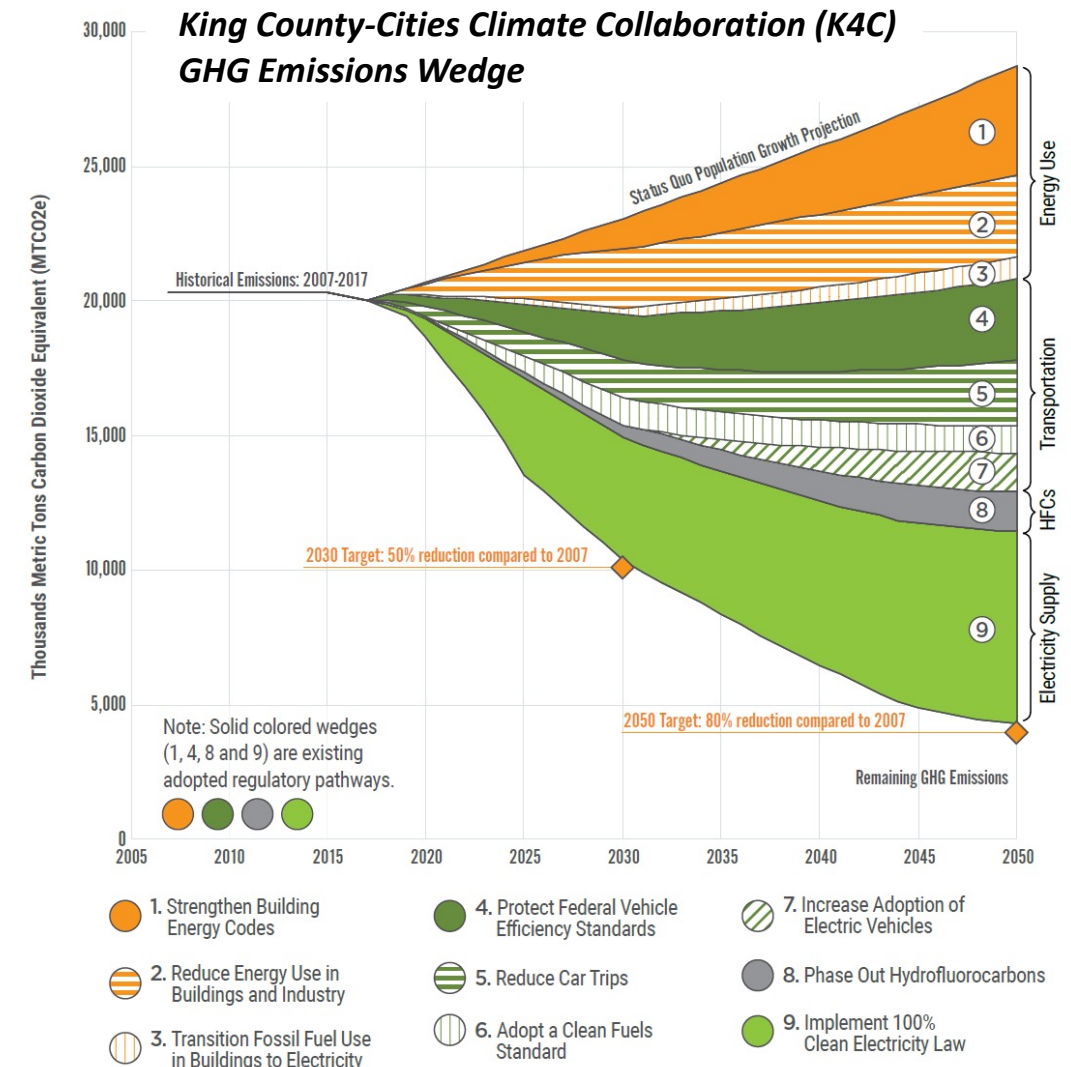
Reflections on Working at Regional Scale cont'd

Caveat: my viewpoint only based on experience to date, not speaking for the Collaborative

There is more to show for regional action on **mitigation**. *Hypothesis:* Building a common framework for joint action is easier for mitigation than adaptation.

For mitigation:

- Easier to identify and measure a shared target
- Easier to identify and measure shared pathways for reaching a shared target
- Action specifics are more transferrable across jurisdictions, e.g., energy codes, regional transit, EV charging infrastructure, transition to clean energy.
- We've been at this work longer.



Reflections on Working at Regional Scale cont'd

Caveat: my viewpoint only based on experience to date, not speaking on behalf of the Collaborative

Working at scale is vital and rewarding, but there are tradeoffs as you move up in scale. Work at a scale that will fit your goals.

Musings on Working at Regional Scale cont'd

Caveat: my viewpoint only based on experience to date, not speaking on behalf of the Collaborative

Working at scale is vital and rewarding, but there are tradeoffs as you move up in scale. Work at a scale that will fit your goals.

In our case, our scale and resource limitations lends itself more to a focus on *how* we do the work (e.g, building organizational capacity) and sharing examples than trying to develop new code, for example.



1 county (39 cities and towns)



4 counties (73 cities and towns)



13 counties

Closing Thoughts

Regional collaboratives are an important mechanism for building a community of practice, leveraging local expertise, supporting less resourced partners, and developing shared practices.

There are similarities to leverage and differences to navigate at all scales. Be intentional in your scale -- Know what you want to accomplish by scaling up and work at the scale that helps you achieve that.

You don't have to have a lot of resources to work as a collaborative. That said, having *some* resources helps!

For more information:

Lara Whitely Binder

King County Climate

Preparedness Program Manager

lwbinder@kingcounty.gov

206-263-0825