

Climate Action Forum

What does a healthy and sustainable future look like for Chelsea?

October 19th, 2022

North Suffolk Zero Carbon Action Plan



Tonight's Agenda

- Welcome Remarks
- Presentation: North Suffolk Net Zero Action Plan
- Postcards from the Future (Interactive Activity)
- Closing
- Open House/Q&A

GreenRoots/ RaícesVerdes



Sari Kayyali
Program Manager,
Microgrids



Bianca Bowman
Climate Justice
Organizer

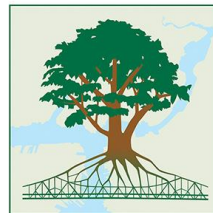


Devin MacGoy
Energy Democracy
Organizer

GreenRoots



**Bianca Bowman,
Climate Justice
Organizer, GreenRoots**



Celebrating **25** Years
of Fighting for Social and
Environmental Justice!

GreenRoots

City of Chelsea



**Alex Train,
Director of Housing
and Community
Development**



North Suffolk Office of Resilience and Sustainability



**Ibrahim
Lopez-Hernandez,**
Sustainability Manager,
NSORS



NORTH
SUFFOLK
OFFICE *of*
RESILIENCE &
SUSTAINABILITY

MAPC Project Team

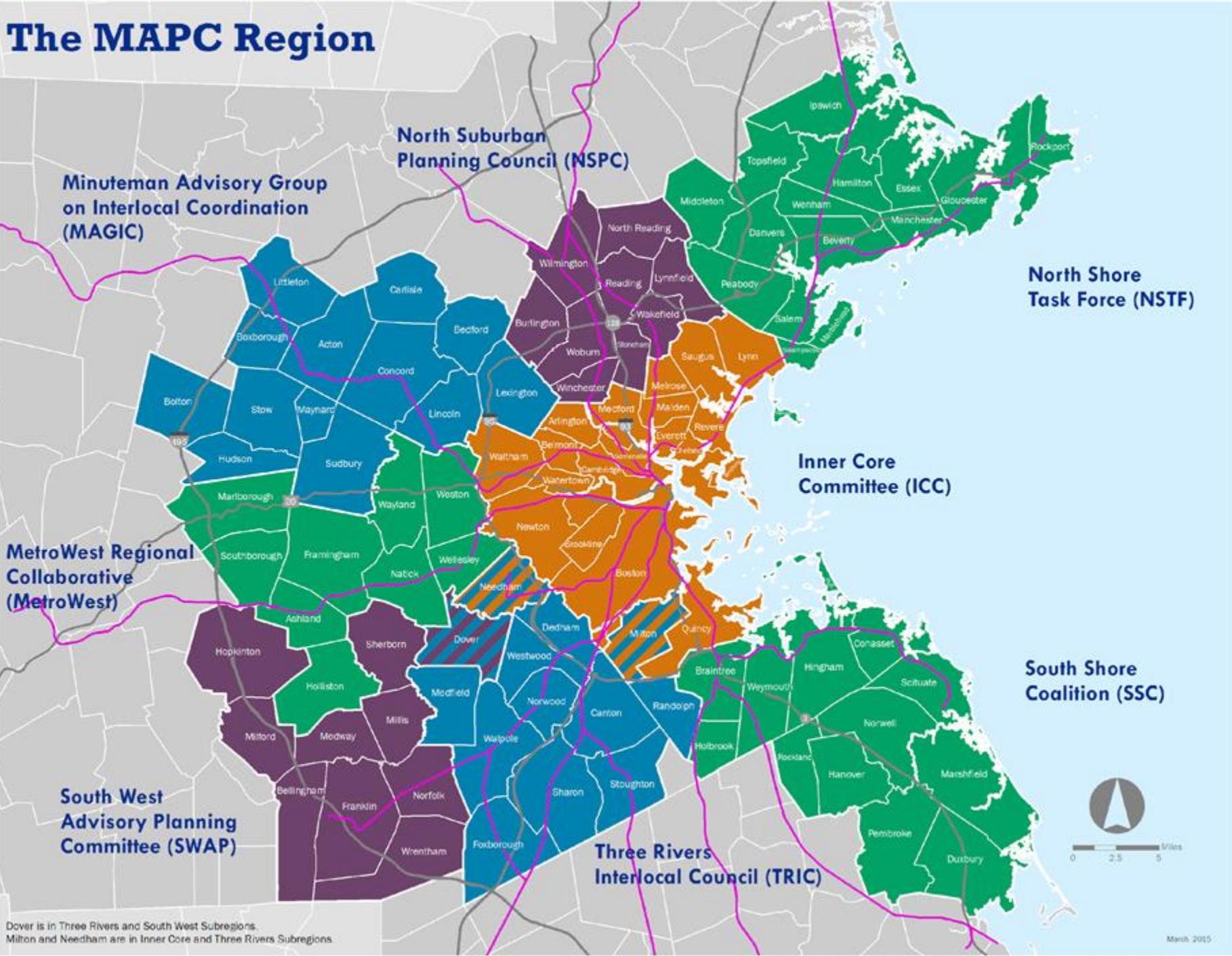


Sasha Shyduroff
Senior Clean Energy
and Climate Planner,
MAPC



Gloria Huangpu
Community
Engagement
Specialist, MAPC

The MAPC Region



Dover is in Three Rivers and South West Subregions.
Milton and Needham are in Inner Core and Three Rivers Subregions.



101 municipalities

1,440 square miles

Nearly 3.2 million residents

**1.8 million jobs
(2010 Census)**

What does MAPC do?



Policy Advocacy



Technical Assistance

Shared Services

Procurement



Recommendations

What is a Zero Carbon Action Plan?

*North Suffolk
Zero Carbon
Action Plan*



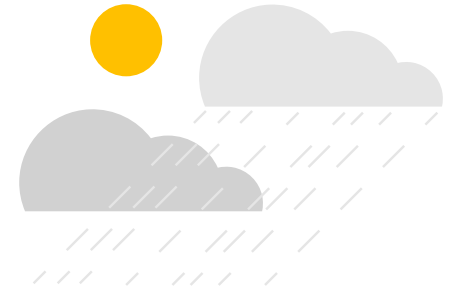
The **Zero Carbon Action Plan (ZCAP)** is our region-wide plan to reduce carbon and other GHG emissions so we can lower our community's impact on climate change.



Energy Use



***Pollution:
Greenhouse Gas***



Climate Change

Equity Assessment

Framework for Strategies and Actions to Reduce Emissions

**Who has been
historically impacted?**



**Who will be most
impacted by the types
of changes to our
climate we expect to
see?**



**How will the benefits
of this strategy be
distributed?**



Community Benefits of Reducing Carbon Emissions



Help residents and businesses reduce energy use and save on energy costs.



Improve the air we breathe by reducing reliance on dirty fossil fuels.

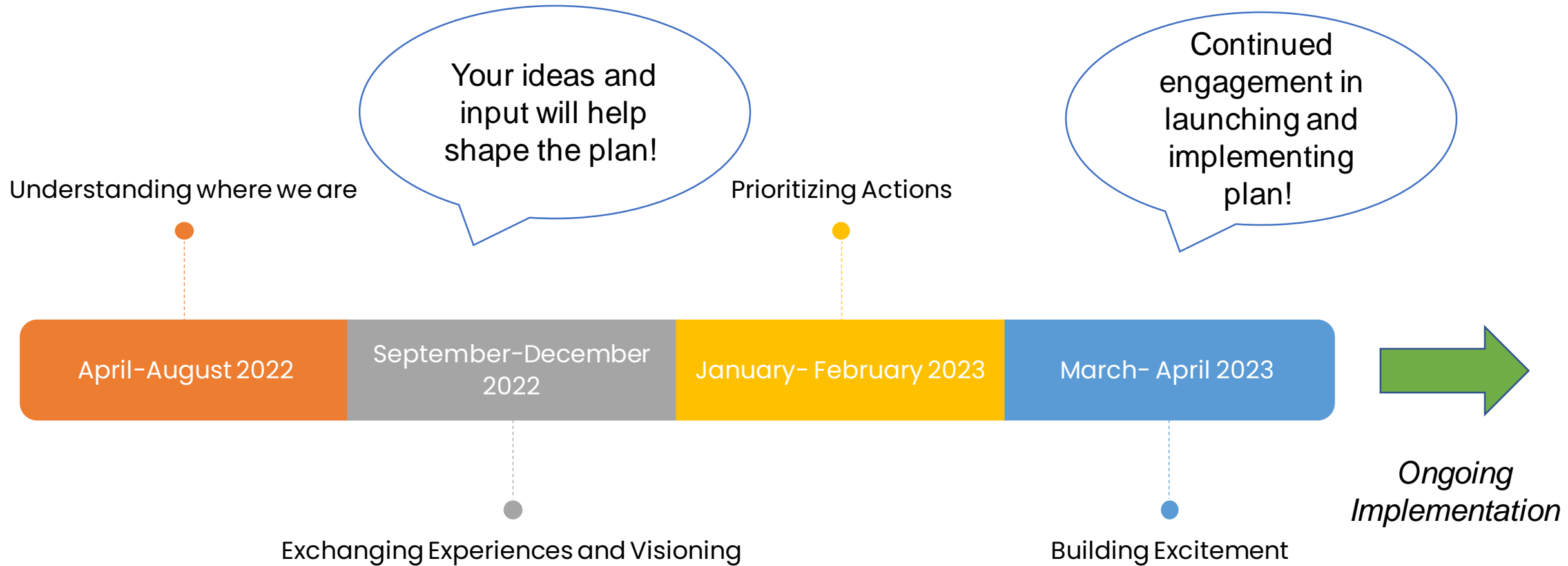


Make our communities safer and easier for walking, biking, and public transit.



Reduce pollution in our waterways.

Project Timeline



Chelsea's Leadership in Climate Action

- Designated a Green Community in 2017
 - Adopted Stretch Energy Code
 - Received \$652,460 in State grants for energy conservation
- Retrofitted Streetlights to LEDs
- 2020 Participated in C-PACE Program, partnered with MassDevelopment
- 2022 Passed a Building Emissions Reduction and Disclosure Ordinance for large buildings



Current Projects



The **MASS SAVE Community First Partnership** supports communities in making businesses and residences more energy efficient.



Source: EE Image Database. Top Photo credit: Andy Harper.
Bottom Photo Credit: Meghan Joyce

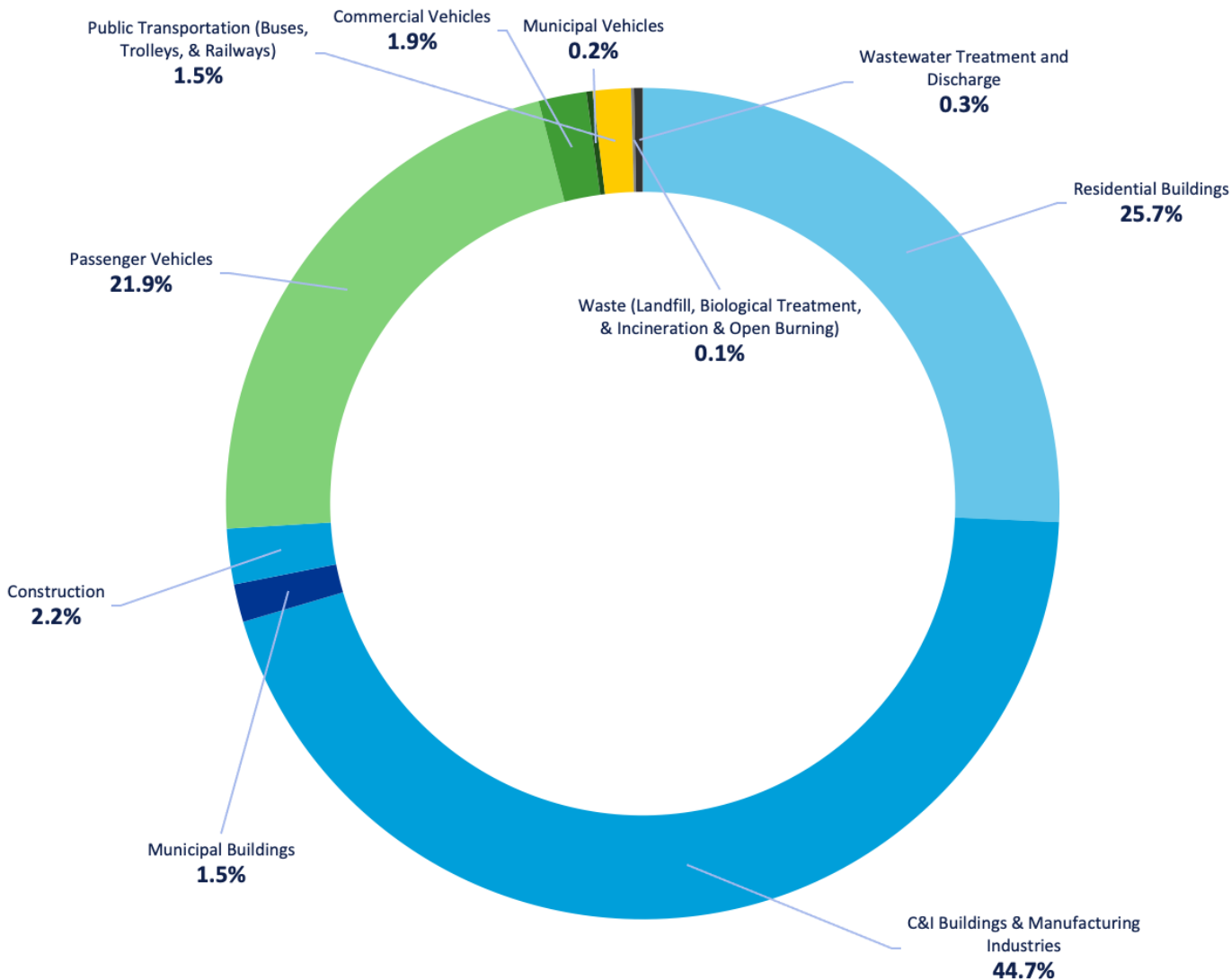
Preparing Chelsea for Climate Impacts

- 2019 Designated a Municipal Vulnerability Preparedness (MVP) Community
- Resilience and open space efforts at Island End River
- Community Microgrid for energy resilience
- Cool Block program
- Provided air conditioners and utility assistance during summer heatwaves through regional program



Chelsea's Community-Wide Emissions

Percent of Total Community-Wide Emissions by Subsector
(with Municipal Emissions Disaggregated)



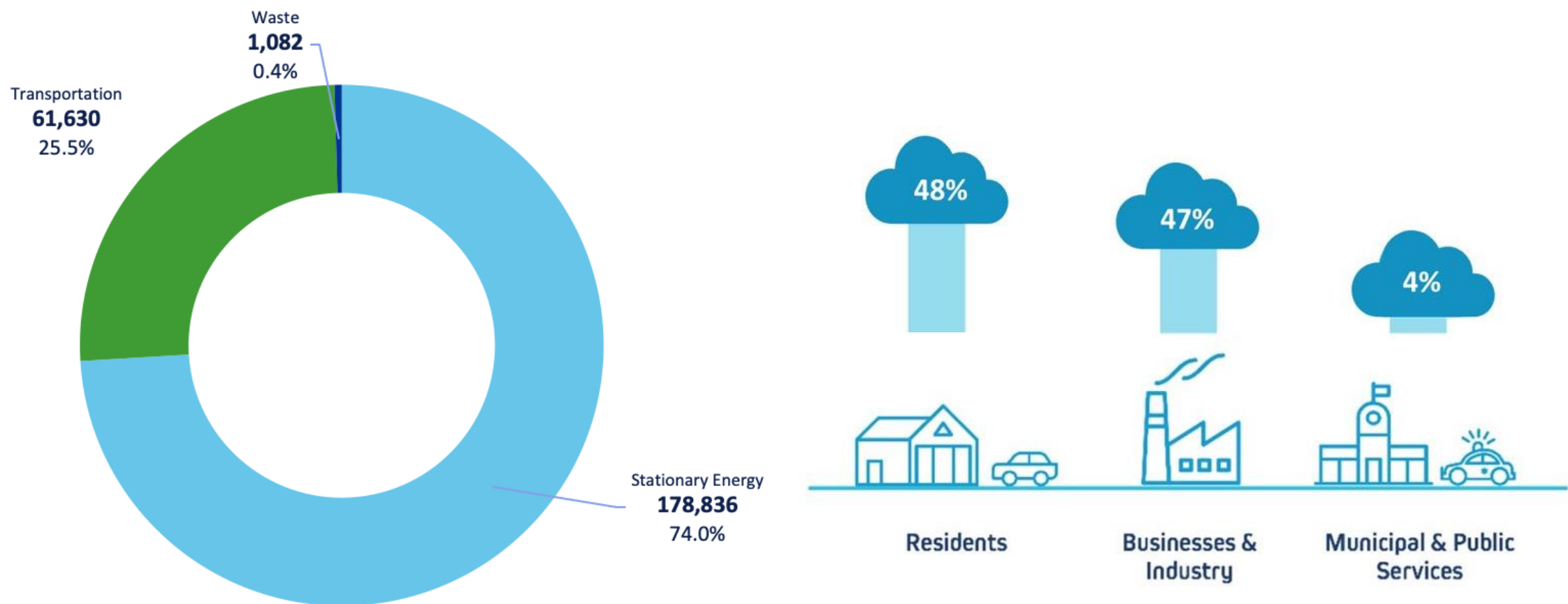
241,548
MT CO₂e

Chelsea's total GHG
emissions in 2017



Emissions by Sector

Community-wide Emissions (MT CO₂e) by Sector



Strategies to Reduce Community-Wide Emissions

From this...



...to this!



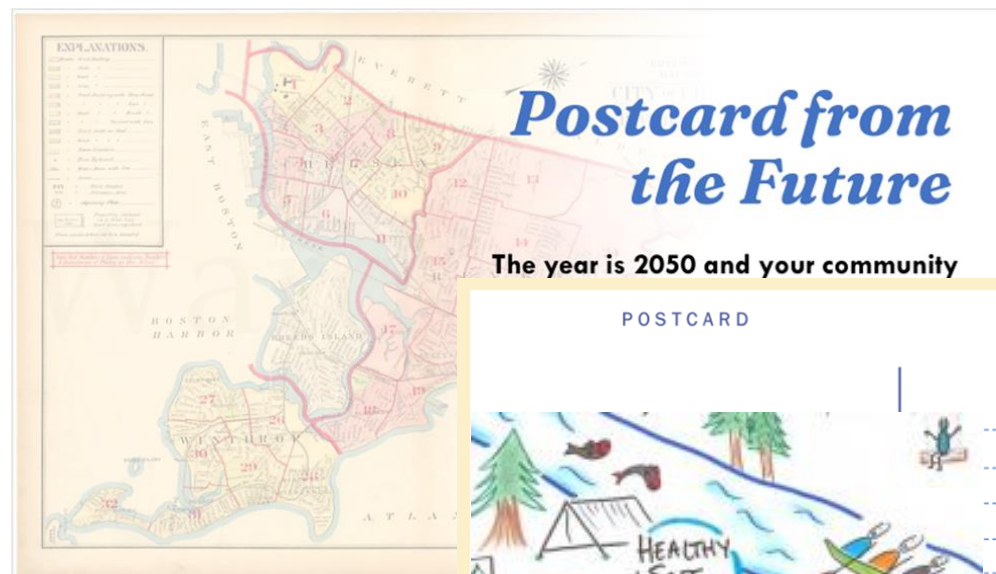
Activity: Chelsea Postcard from the Future

The year is 2050 and the City of Chelsea has met its climate goals. You are writing a postcard from your future self to your current self in 2022. What changes took place to make Chelsea a sustainable and climate-resilient community? What does Chelsea look like now in 2050?

Instructions

- Take the next 10 minutes to fill out the postcard survey
- Then, we'll take 10 minutes to discuss as a group what ideas and reflections you came up with while doing the exercise

Use the link in the chat or this QR code:



POSTCARD

HEALTHY + SAFE ENVIRONMENTS
Built natural environments
are safe, RESILIENT + ACCESSIBLE

From: _____ (Name) _____ (City or Town)

May we share your response in future events and materials? ☐ Yes ☐ No

POSTCARD

Bicycling and walking have come back into style. Busses are electric and are covering more areas. Automobile companies have reduced their emissions. Trees are planted along with flowers and greenery in every available spot.

Rooftop gardens on most homes who have limited yard space. Excessive buildings have stopped and gardens and playgrounds are built instead.

From: Angela _____ (Name) _____ (City or Town)

May we share your response in future events and materials? ☐ Yes ☐ No

Envisioning a Sustainable Chelsea

What does sustainability mean to you?

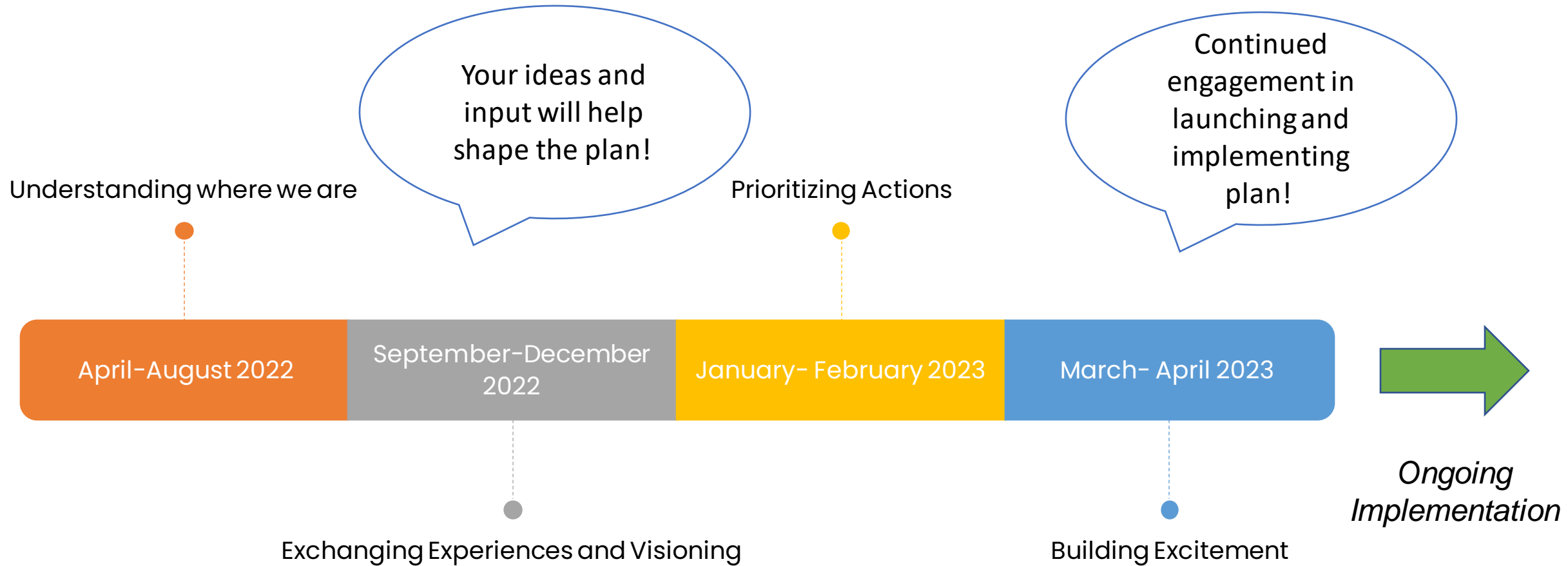
What does a sustainable future for Chelsea look like to you?

What are your greatest concerns about climate change?

What do you think the town government should be doing to prepare for climate change?

What challenges do you face in your everyday life? What priorities do you have for the future?

Project Timeline



Ways to Stay Involved

We want to hear from you! We need your ideas, perspectives, and insights for how our communities and cities can reduce carbon pollution and work towards a sustainable future.

- Sign up to host a visioning session this fall
- Join our newsletter
- Visit our website to learn more

Thank you!

Bianca Bowman

Climate Justice Organizer,
GreenRoots

biancab@greenrootschelsea.org

Sari Kayyali

Microgrid Program Manager,
GreenRoots

sarik@greenrootschelsea.org

**Ibrahim Lopez-
Hernandez**

Sustainability Manager,
NSORS

ilopez@chelseama.gov

Sasha Shyduroff

Senior Clean Energy and
Climate Planner, MAPC

sshyduroff@mapc.org



Open House