

# Climate Action Forum

***What does a healthy and sustainable future look like for  
Winthrop?***

*September 21st, 2022*

*North Suffolk Zero Carbon Action Plan*



# Introduce yourself in the chat

Your name and  
relationship to  
Winthrop (live,  
work, etc...)

Why are you  
interested in  
attending  
today's forum?

# Zoom Guidelines

- Use the **Raise Hand** feature if you would like to speak and wait for the facilitator to call on you.
- Rename yourself, turn on video if you're able to do so during discussion.
- Use the chat for additional questions and comments.
- Please mute yourself when not speaking.
- Note- we are NOT recording today, but the slides will be made available on the project website.

# Tonight's Agenda

- Welcome Remarks
- Presentation: North Suffolk Net Zero Action Plan
- Postcards from the Future (Interactive Activity)
- Closing
- Open House/Q&A

# Welcome Remarks

**Rachel Kelly,**  
Town Planner,  
Town of Winthrop



# North Suffolk Office of Resilience and Sustainability



**Ibrahim  
Lopez-Hernandez,**  
Sustainability Manager,  
NSORS



NORTH  
SUFFOLK  
OFFICE *of*  
RESILIENCE &  
SUSTAINABILITY

# MAPC Project Team



**Sasha Shyduroff**  
Senior Clean  
Energy and Climate  
Planner, MAPC



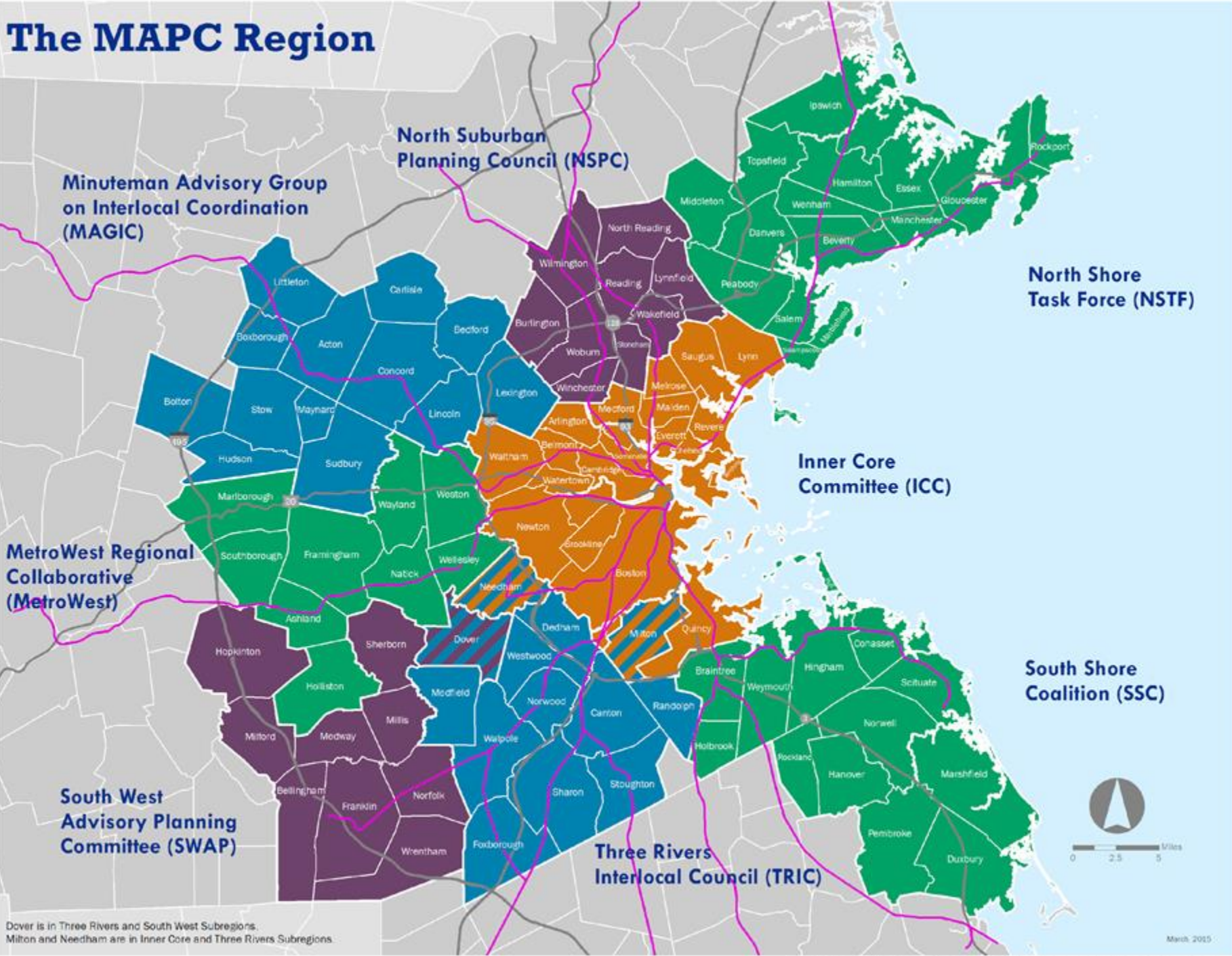
**Francelis Morillo  
Suarez**  
Clean Energy and  
Climate Fellow, MAPC



**Gloria Huangpu**  
Community  
Engagement  
Specialist, MAPC



# The MAPC Region



Dover is in Three Rivers and South West Subregions.  
Milton and Needham are in Inner Core and Three Rivers Subregions.



101 municipalities

1,440 square miles

Nearly 3.2 million residents

1.8 million jobs (2010 Census)



# What does MAPC do?



**Policy Advocacy**



**Technical Assistance**

**Shared Services**

**Procurement**



**Recommendations**

# What is a Zero Carbon Action Plan?

*North Suffolk  
Zero Carbon  
Action Plan*



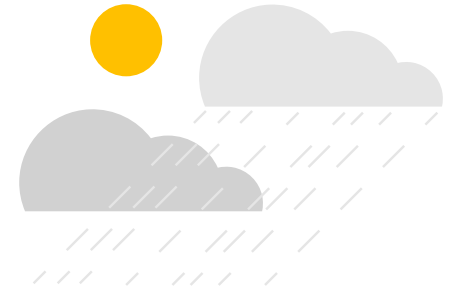
The **Zero Carbon Action Plan (ZCAP)** is our region-wide plan to reduce carbon and other GHG emissions so we can lower our community's impact on climate change.



***Energy Use***



***Pollution:  
Greenhouse Gas***



***Climate Change***

# Equity Assessment

Framework for Strategies and Actions to Reduce Emissions

**Who has been  
historically impacted?**



**Who will be most  
impacted by the types  
of changes to our  
climate we expect to  
see?**



**How will the benefits  
of this strategy be  
distributed?**



# Community Benefits of Reducing Carbon Emissions



Help residents and businesses reduce energy use and save on energy costs.



Make our communities safer and easier for walking, biking, and public transit.

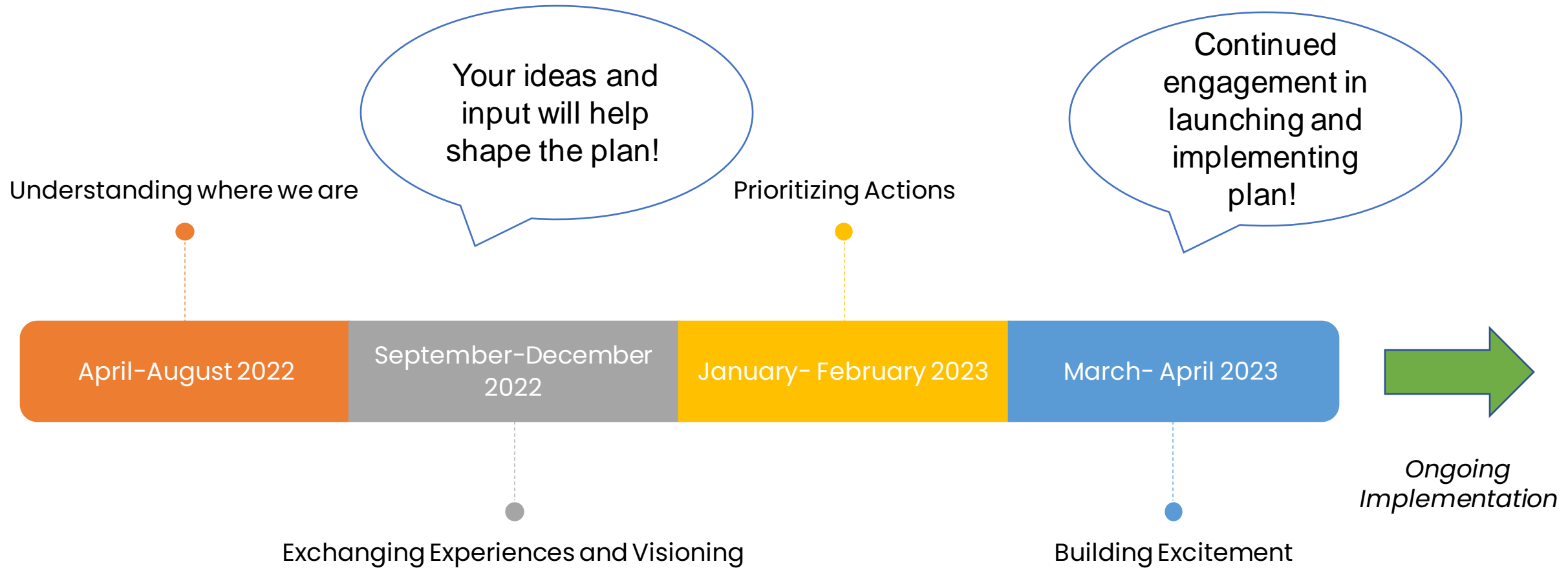


Improve the air we breathe by reducing reliance on dirty fossil fuels.



Reduce pollution in our waterways.

# Project Timeline





# Winthrop's Leadership in Climate Action

- *Green Communities*: Early adopter, designated in 2012 and have received over \$900,000 in grant money for Energy Conservation Measures
- *Retrofitted Streetlights to LEDs*
- 2017 Led *Solarize Winthrop* in partnership with DOER and MassCEC
- Designated *SolSmart Silver* by US Department of Energy
- Key partner in regional *Metro Mayors Coalition Climate Taskforce*



# Current Projects



The **MASS SAVE Community First Partnership** supports communities in making businesses and residences more energy efficient.



Source: EE Image Database. Top Photo credit: Andy Harper.  
Bottom Photo Credit: Meghan Joyce

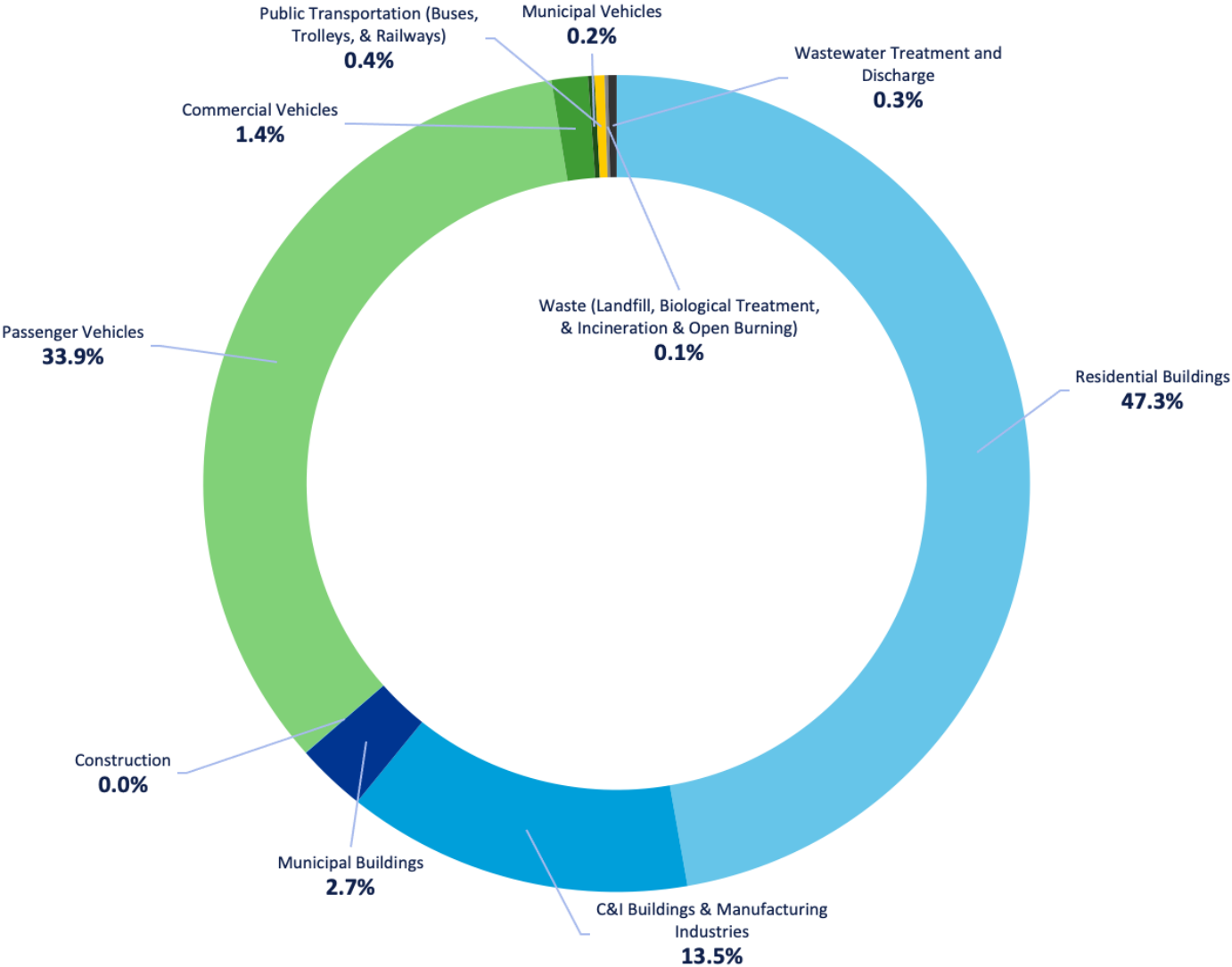
# Preparing Winthrop for Climate Impacts

- Designated MA Municipal Vulnerability Planning (MVP) community in 2018
- MVP Action Grant (2019-2021)- Developed Flood Resilience Checklist for new development
- MA EEA Planning Assistance Grant- Updated zoning for resilience and mitigation (2022)
- Partnership with Metro Mayors to establish a regional Heat Preparedness and Adaptation Plan (2020-2022)



# Winthrop's Community-Wide Emissions

Percent of Total Community-Wide Emissions by Subsector  
(with Municipal Emissions Disaggregated)



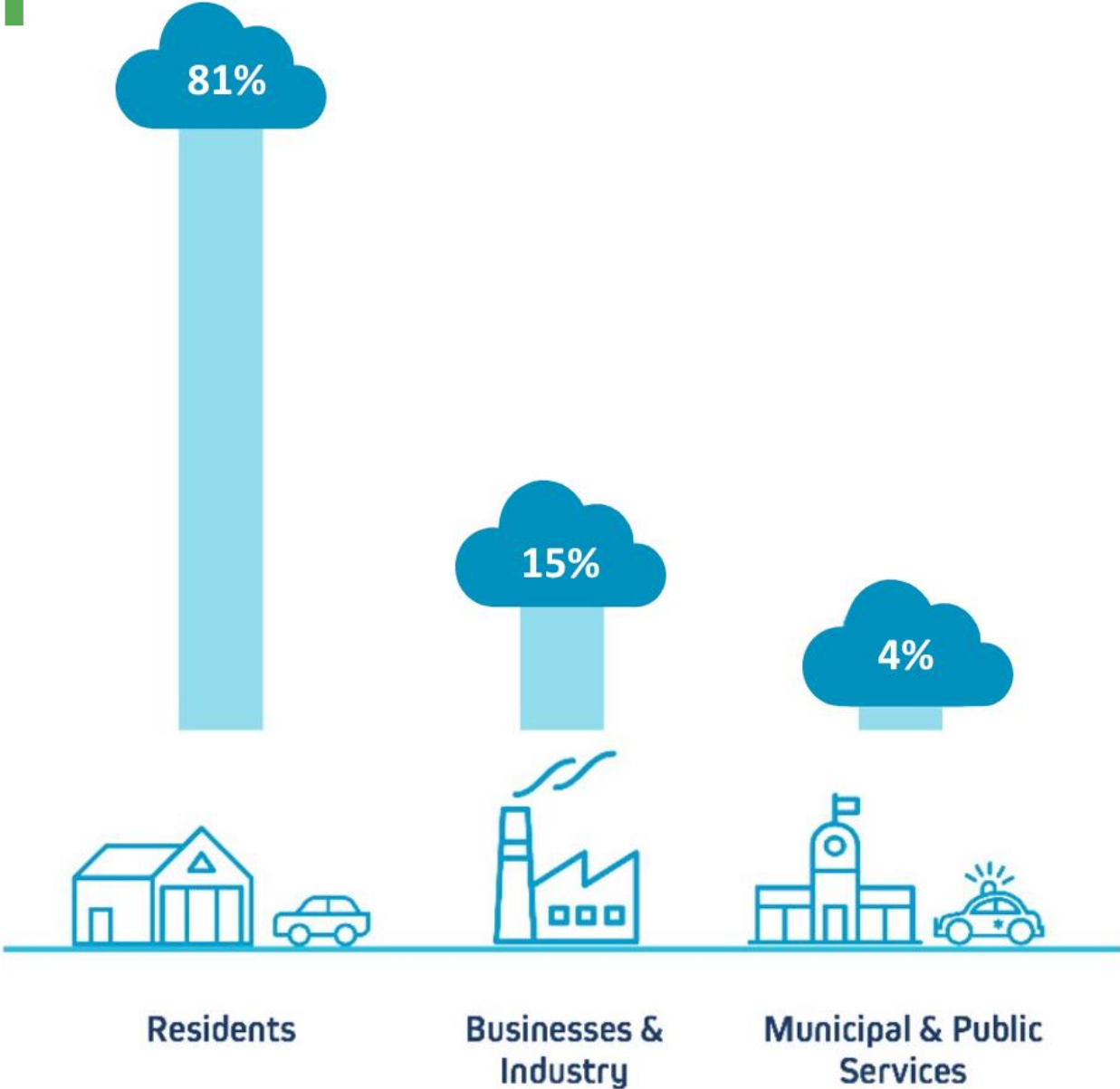
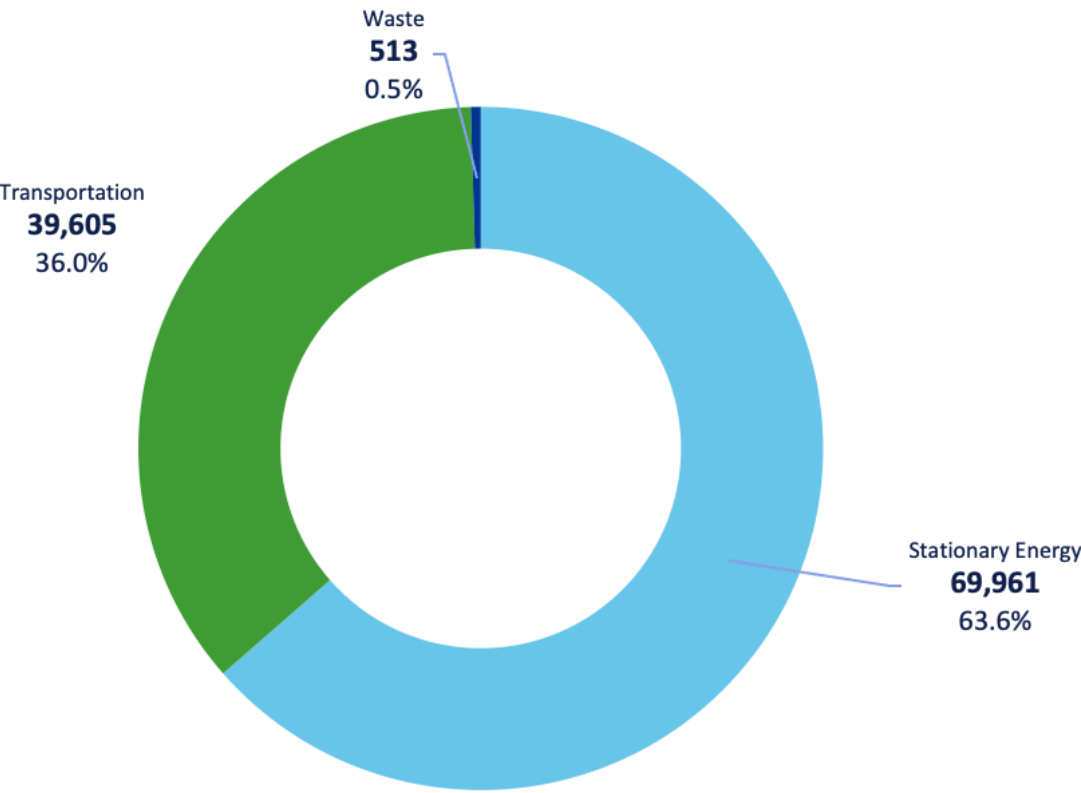
110,079  
MT CO<sub>2</sub>e

Winthrop's total GHG  
emissions in 2017



# Emissions by Sector

Community-wide Emissions (MT CO2e) by Sector





# Strategies to Reduce Community-Wide Emissions

**From this...**



**...to this!**



# Activity: Winthrop Postcard from the Future

The year is 2050 and the Town of Winthrop has met its climate goals. You are writing a postcard from your future self to your current self in 2022. What changes took place to make Winthrop a sustainable and climate-resilient community? What does Winthrop look like now in 2050?



# Instructions

- Take the next 10 minutes to fill out the postcard survey
- Then, we'll take 10 minutes to discuss as a group what ideas and reflections you came up with while doing the exercise

*Use the link in the chat or this QR code:*



The year is 2050 and the North Suffolk region has met its climate goals. You are writing a postcard from your future self to your current self in 2022. What do Chelsea, Revere, and Winthrop look like now in 2050? What changes took place to make this a sustainable and climate-resilient region?

A large, empty rectangular box with a thin black border, intended for writing the postcard message. A small diagonal line is visible in the bottom right corner of the box.

# Envisioning a Sustainable Winthrop

---

What does sustainability mean to you?

---

What does a sustainable future for Winthrop look like to you?

---

What are your greatest concerns about climate change?

---

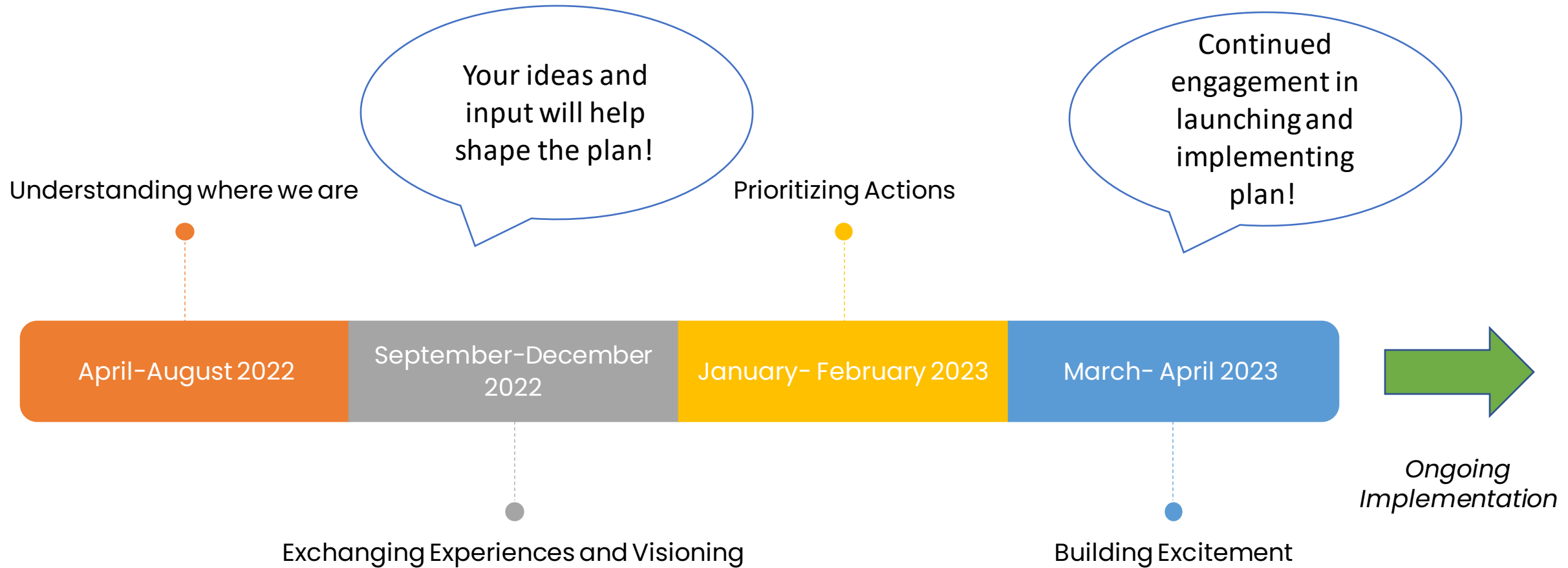
What do you think the town government should be doing to prepare for climate change?

---

What challenges do you face in your everyday life? What priorities do you have for the future?



# Project Timeline





# Ways to Stay Involved

We want to hear from you! We need your ideas, perspectives, and insights for how our communities and cities can reduce carbon pollution and work towards a sustainable future.

- Sign up to host a visioning session this fall
- Join our newsletter
- Visit our website to learn more

# Quick Survey

Thank you for attending  
today's event!

We are asking for your  
feedback so we can improve  
our work. Please fill out the  
quick survey:

[mapc.ma/events](https://mapc.ma/events)

# Thank you!

**Ibrahim Lopez-  
Hernandez**

Sustainability Manager,  
NSORS

[ilopez@chelseama.gov](mailto:ilopez@chelseama.gov)

**Sasha Shyduroff**

Senior Clean Energy  
and Climate Planner,  
MAPC

[sshyduroff@mapc.org](mailto:sshyduroff@mapc.org)