

# Climate Action Forum

*What does a healthy and sustainable future look like?*

*North Suffolk Zero Carbon Action Plan*



# MAPC / NSORS Team



**Sasha Shyduroff**  
Senior Clean  
Energy and  
Climate Planner,  
MAPC



**Francelis Morillo  
Suarez**  
Clean Energy and  
Climate Planner I,  
MAPC



**Gloria Huangpu**  
Community  
Engagement  
Specialist, MAPC



**Ibrahim Lopez  
Hernandez**  
Sustainability  
Manager, NSORS

**Bianca Mercado**  
Sustainability  
Fellow, NSORS

# Chelsea, Revere, and Winthrop



**Rachel Kelly,**  
Director of Planning  
and Development,  
Town of Winthrop



**Alex Train,** Director of  
Housing & Community  
Development,  
City of Chelsea



**GreenRoots –  
Bianca Bowman,**  
Climate Justice  
Organizer



**GreenRoots –  
Sari Kayyali,**  
Microgrids Manager

# Zoom Guidelines

- Use the **Raise Hand** feature if you would like to speak and wait for the facilitator to call on you.
- Rename yourself, turn on video if you're able to do so during discussion.
- Use the chat for additional questions and comments.
- Please mute yourself when not speaking.

# Agenda

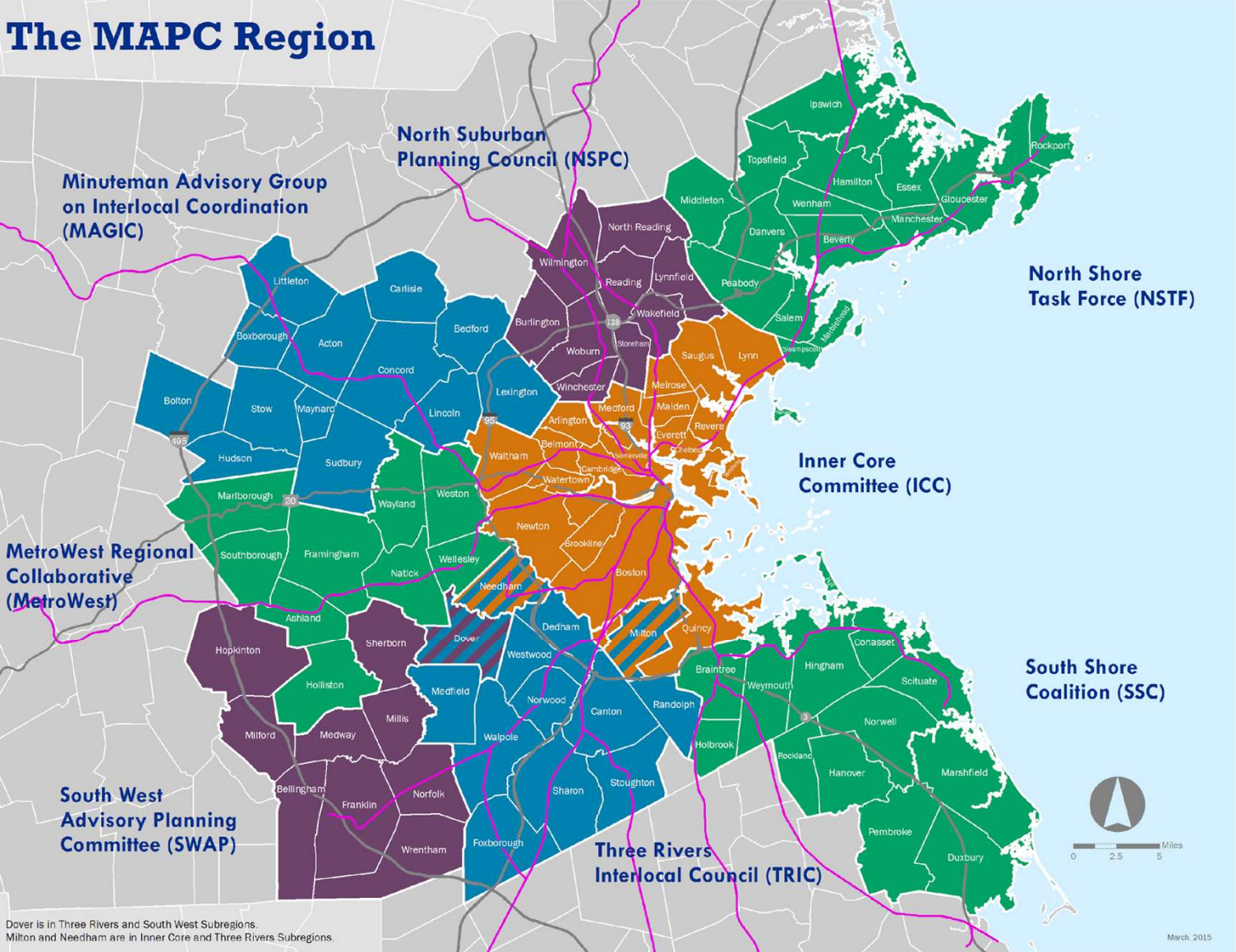
- Presentation: North Suffolk Net Zero Action Plan
- Postcards from the Future (Interactive Activity)
- Group Discussion
- Closing

# Icebreaker

Your name and relationship to the community (live, work, go to school etc...)?

What interests you about today's topic?

# The MAPC Region



101 municipalities

1,440 square miles

Nearly 3.2 million residents

1.8 million jobs (2010 Census)

# What does MAPC do?



Policy Advocacy



Technical Assistance  
Shared Services  
Procurement



Recommendations



# What is a Zero Carbon Action Plan?

*North Suffolk  
Zero Carbon  
Action Plan*



The **Zero Carbon Action Plan (ZCAP)** is our region-wide plan to reduce carbon and other GHG emissions so we can lower our community's impact on climate change.



***Energy Use***



***Pollution:  
Greenhouse Gas***



***Climate Change***

# Equity Lens

Framework for Strategies and Actions to Reduce Emissions

**Who has been  
historically impacted?**



**Who will be most  
impacted by the types  
of changes to our  
climate we expect to  
see?**



**How will the benefits  
of this strategy be  
distributed?**



# Community Benefits of Reducing Carbon Emissions



Help residents and businesses reduce energy use and save on energy costs.



Make our communities safer and easier for walking, biking, and public transit.



Improve the air we breathe by reducing reliance on dirty fossil fuels.



Reduce pollution in our waterways.

# Chelsea's Leadership in Climate Action

- Designated a Green Community in 2017
  - Adopted Stretch Energy Code
  - Received \$652,460 in State grants for energy conservation
- Retrofitted Streetlights to LEDs
- 2020 Participated in C-PACE Program, partnered with MassDevelopment
- 2022 Passed a Building Emissions Reduction and Disclosure Ordinance for large buildings

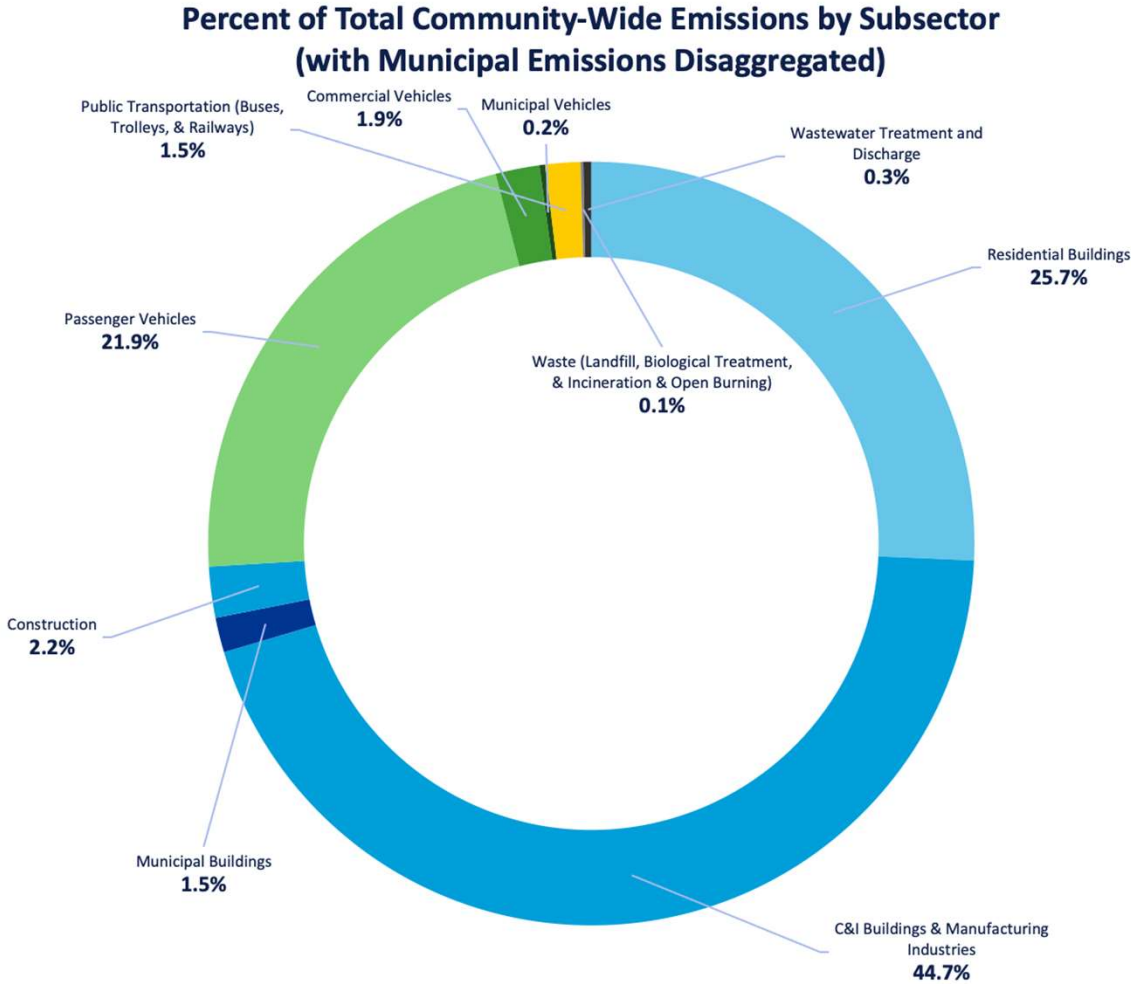


# Preparing Chelsea for Climate Impacts

- 2019 Designated a Municipal Vulnerability Preparedness (MVP) Community
- Resilience and open space efforts at Island End River
- Community Microgrid for energy resilience
- Cool the Block program
- Provided air conditioners and utility assistance during summer heatwaves through regional program



# Chelsea's Community-Wide Emissions



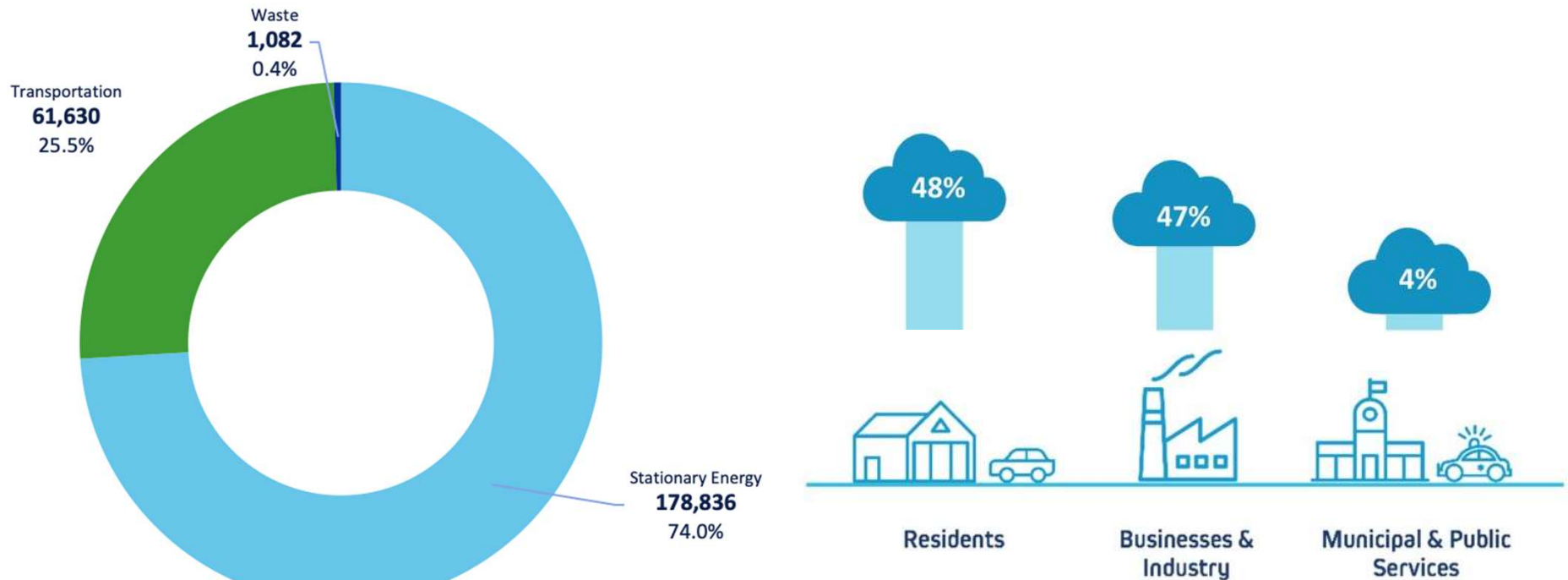
**241,548  
MT CO<sub>2</sub>e**

Chelsea's total GHG  
emissions in 2017



# Chelsea's Emissions by Sector

Community-wide Emissions (MT CO<sub>2</sub>e) by Sector



# Revere's Leadership in Climate Action

- Designated Green Community in 2011
  - Adopted Energy Stretch Code
  - Updated Energy Reduction plan and energy audit in 2019
  - Received \$832,072 in State grants for energy conservation
- Installed EV Charging Stations at City Hall
- 2019 Completed *Community Shared Solar* project
- LED Streetlight retrofits
- Community Gardens and in process of community composting



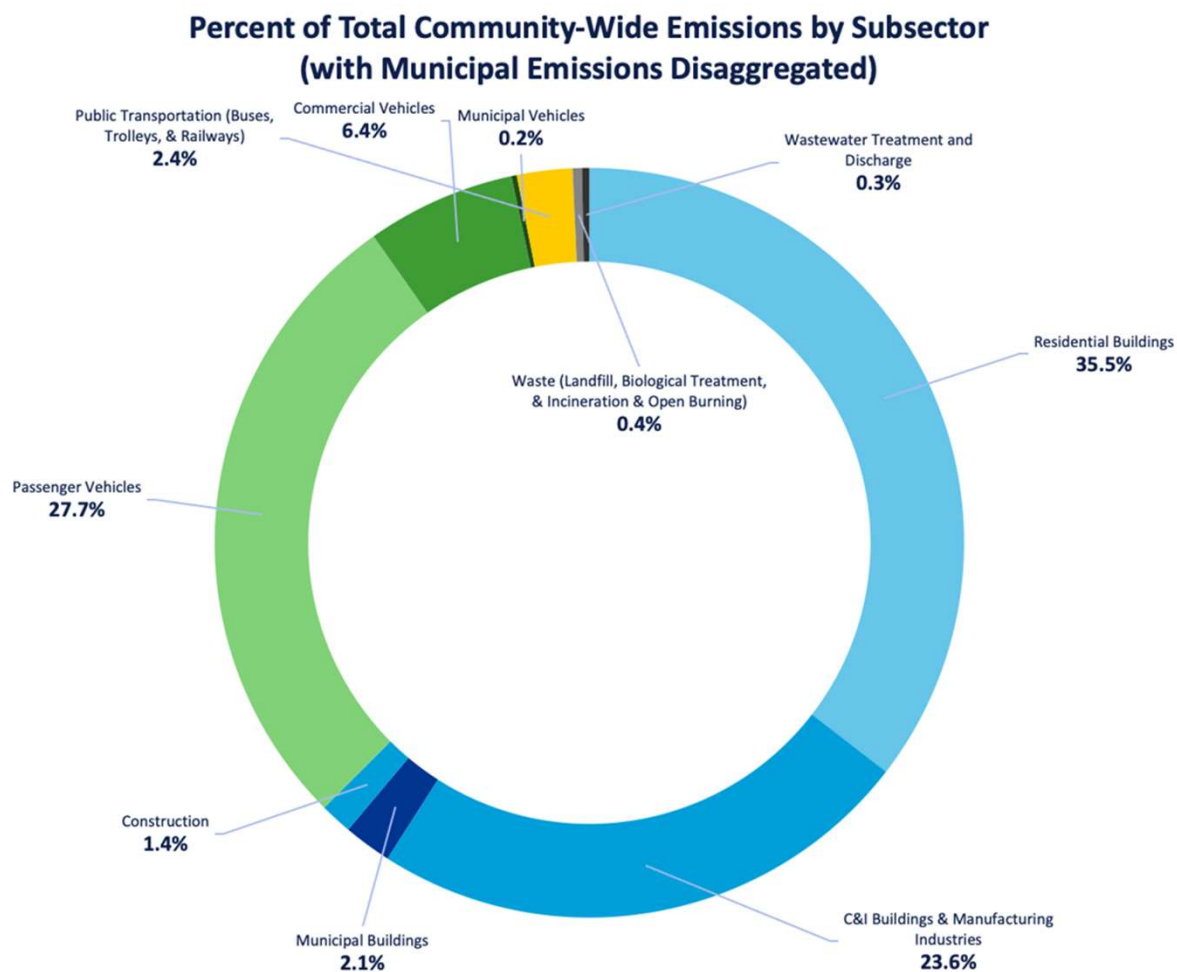


# Preparing Revere for Climate Impacts

- 2019 Designated a Municipal Vulnerability Preparedness (MVP) Community
  - Conducted study for the Point of Pines and Riverside area to investigate strategies to make these neighborhoods more resilient to climate change
  - Saugus River Watershed Vulnerability and Adaptation Study
- 2018: Adopted *Complete Streets* program
- Developing Hazard Mitigation Plan



# Revere's Community-Wide Emissions



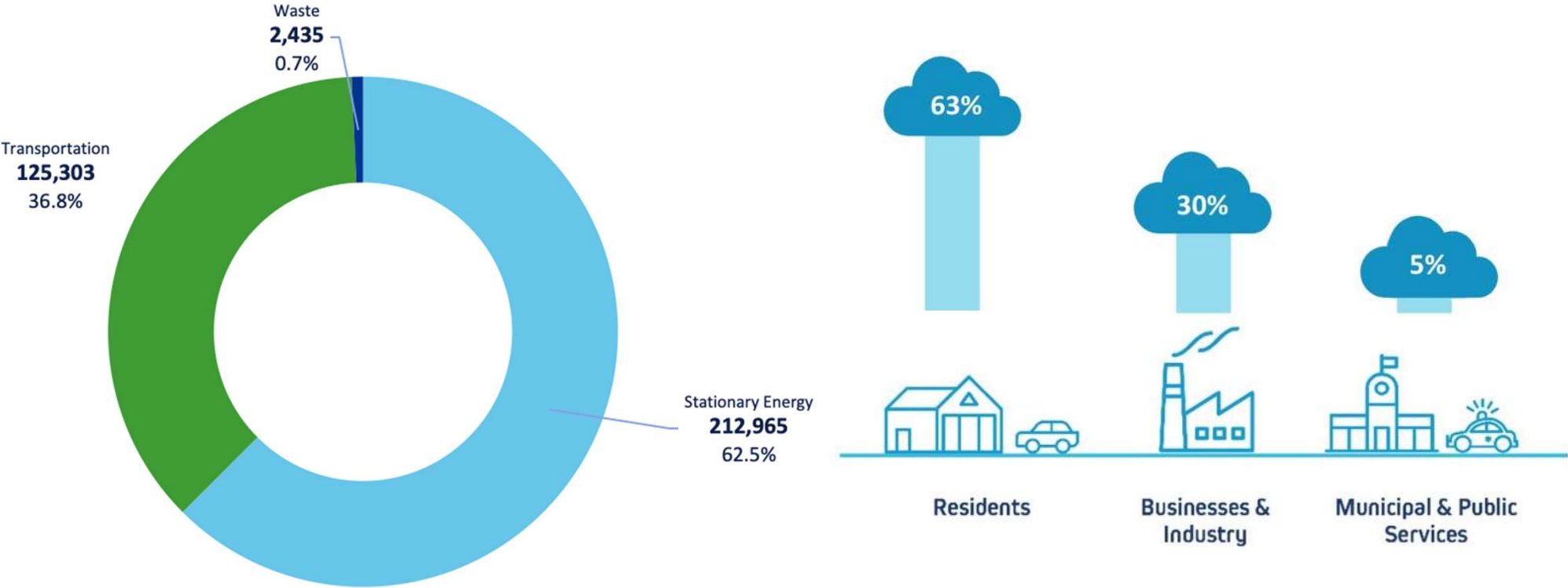
**340,703  
MT CO<sub>2</sub>e**

Revere's total GHG  
emissions in 2017



# Revere's Emissions by Sector

Community-wide Emissions (MT CO2e) by Sector



# Winthrop's Leadership in Climate Action

- *Green Communities*: Early adopter, designated in 2012 and have received over \$900,000 in grant money for Energy Conservation Measures
- *Retrofitted Streetlights to LEDs*
- 2017 Led *Solarize Winthrop* in partnership with DOER and MassCEC
- Designated *SolSmart Silver* by US Department of Energy
- Key partner in regional *Metro Mayors Coalition Climate Taskforce*



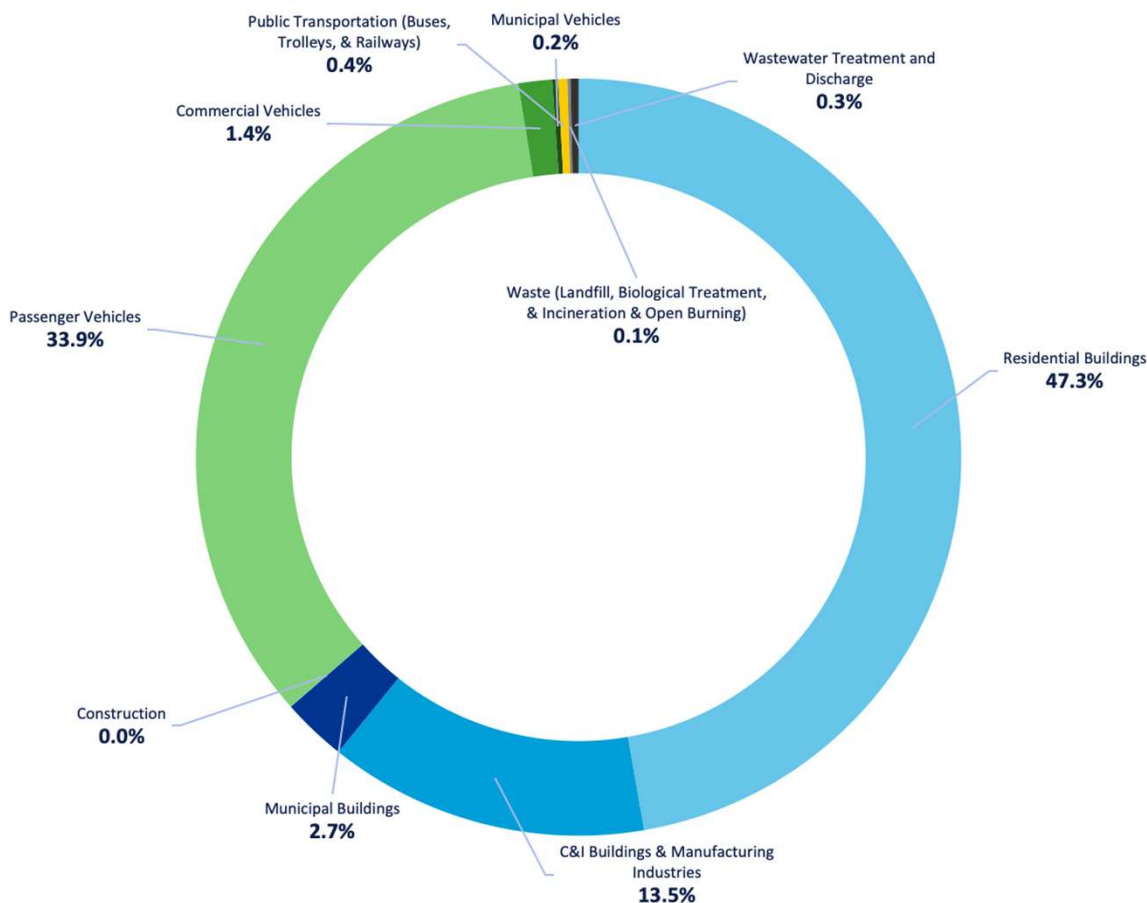
# Preparing Winthrop for Climate Impacts

- Designated MA Municipal Vulnerability Planning (MVP) community in 2018
- MVP Action Grant (2019-2021)- Developed Flood Resilience Checklist for new development
- MA EEA Planning Assistance Grant- Updated zoning for resilience and mitigation (2022)
- Partnership with Metro Mayors to establish a regional Heat Preparedness and Adaptation Plan (2020-2022)



# Winthrop's Community-Wide Emissions

**Percent of Total Community-Wide Emissions by Subsector  
(with Municipal Emissions Disaggregated)**



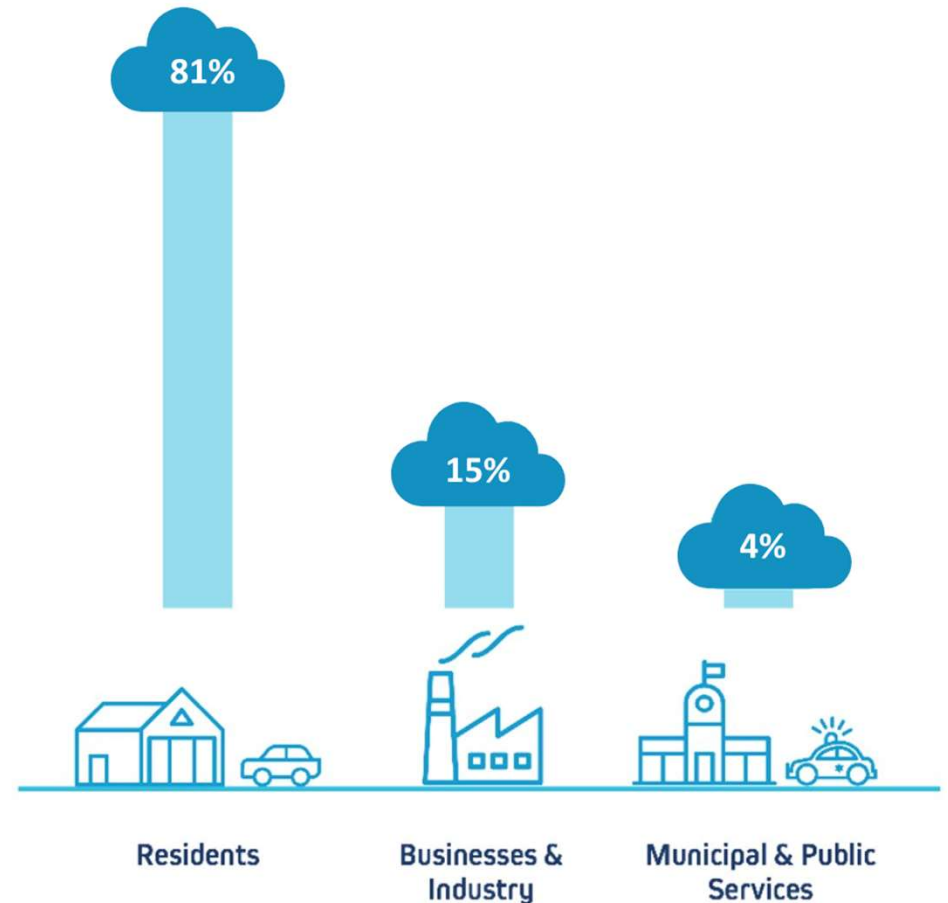
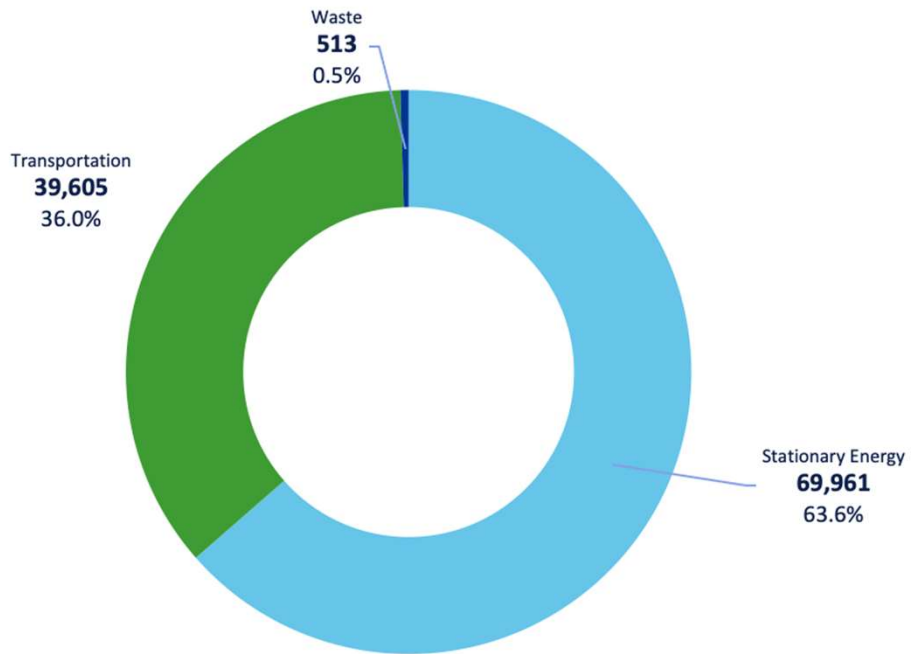
**110,079  
MT CO<sub>2</sub>e**

Winthrop's total GHG  
emissions in 2017



# Winthrop's Emissions by Sector

Community-wide Emissions (MT CO<sub>2</sub>e) by Sector



# Current Projects



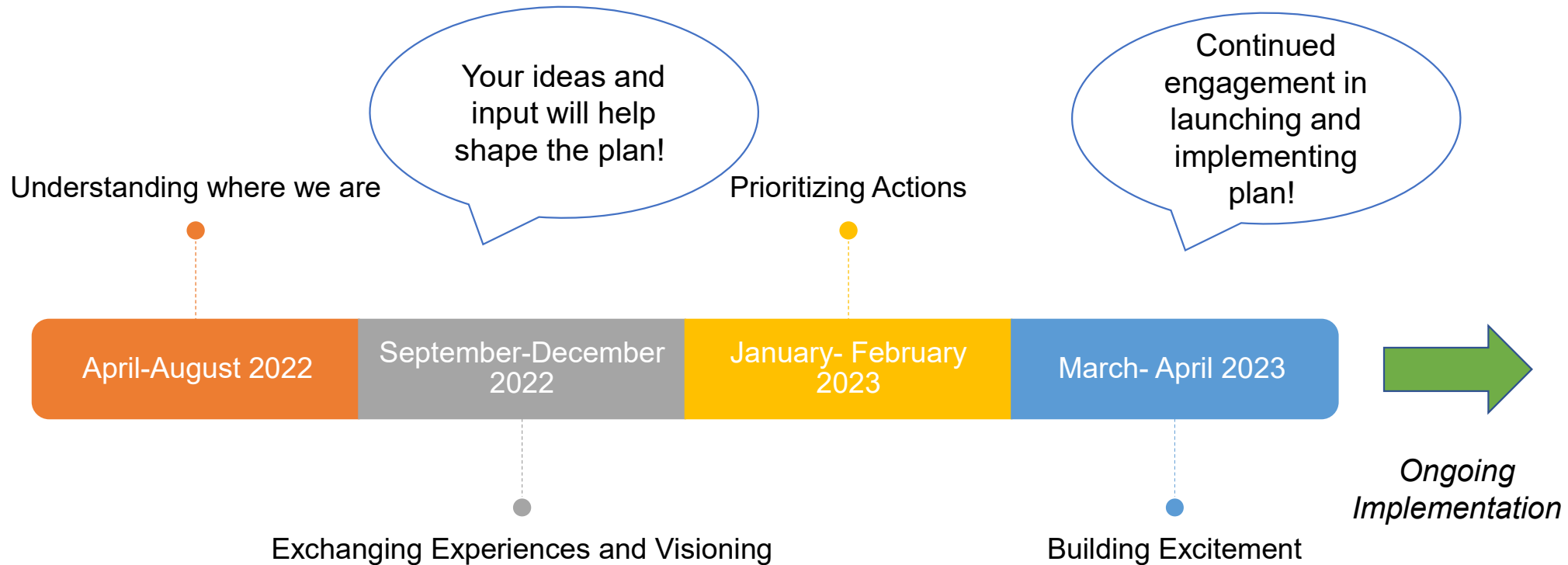
The **MASS SAVE Community First Partnership** supports communities in making businesses and residences more energy efficient.

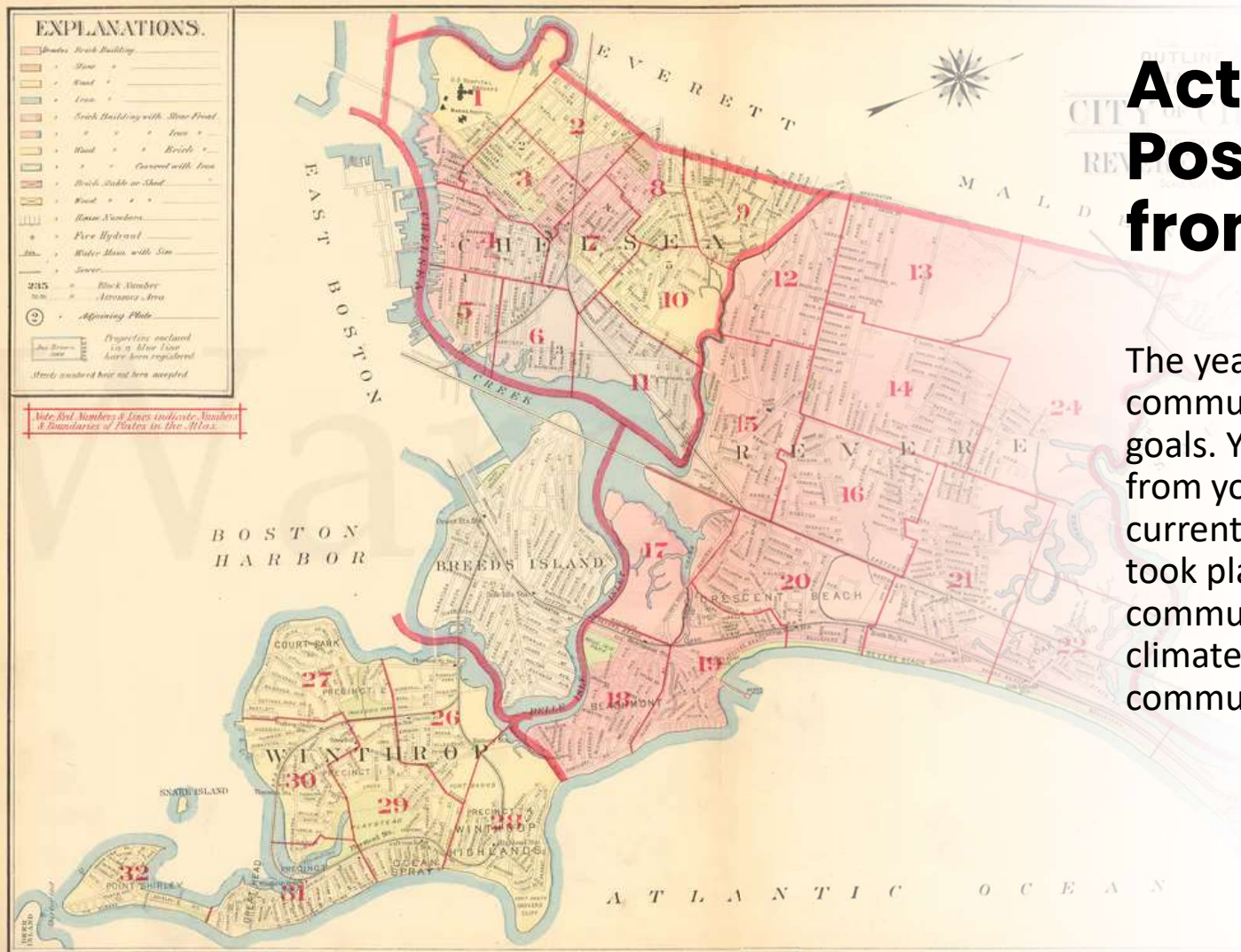


Source: EE Image Database. Top Photo credit: Andy Harper.  
Bottom Photo Credit: Meghan Joyce



# Project Timeline





# Activity: Postcard from the Future

The year is 2050 and your community has met its climate goals. You are writing a postcard from your future self to your current self in 2022. What changes took place to make your community sustainable and climate-resilient? What does your community look like now in 2050?

# Instructions

- Take the next 10 minutes to fill out the postcard survey
- Then, we'll take 10 minutes to discuss as a group what ideas and reflections you came up with while doing the exercise

*Use the link in the chat or this QR code:*



The year is 2050 and the North Suffolk region has met its climate goals. You are writing a postcard from your future self to your current self in 2022. What do Chelsea, Revere, and Winthrop look like now in 2050? What changes took place to make this a sustainable and climate-resilient region?

A large, empty rectangular box with a thin black border, intended for writing the postcard message. A small, faint icon of a pen is visible in the bottom right corner of the box.

# Envisioning a Sustainable North Suffolk Region

---

What does sustainability mean to you?

---

What does a sustainable future for Winthrop look like to you?

---

What are your greatest concerns about climate change?

---

What do you think the town government should be doing to prepare for climate change?

---

What challenges do you face in your everyday life? What priorities do you have for the future?

# Additional Guiding Questions

---

Do you or others you know in your community struggle to pay for your energy utilities (electricity, gas, oil etc...)? Are there things you do differently when your utilities cost too much?

---

How does the fossil fuel industry, like the production and burning of natural gas, coal, oil, impact your life and community? What are the benefits? What are the challenges?

---

The State has made a commitment to reach net zero and reduce Greenhouse Gas emissions by 2050. How might the transition to renewable energy like wind, solar, geo-thermal, and other sources impact your life and community? What are the benefits? What are the challenges?

---

Have you ever tried to access existing programs for utility assistance, energy efficiency, weatherization, solar energy or other programs offered by the State or utilities? If yes, how was your experience? If not, why not?

---

What do you think the role of the city government should be in reducing GHG emissions and energy usage across the community?

**Questions?**

# Ways to Stay Involved

We want to hear from you! We need your ideas, perspectives, and insights for how our communities and cities can reduce carbon pollution and work towards a sustainable future.

What do **you** want your city/town to look like in the future?

- Join future prioritization workshops
  - This will give you the opportunity to let us know which strategies you believe should be prioritized for your community!
- Join our newsletter
- Visit our website to learn more