

# The Massachusetts Historical Commission



**WILLIAM FRANCIS GALVIN**  
SECRETARY OF THE COMMONWEALTH  
CHAIRMAN, MASSACHUSETTS HISTORICAL COMMISSION

**Massachusetts Historical Commission**  
Jennifer B. Doherty  
Local Government Programs Coordinator  
February 8, 2023

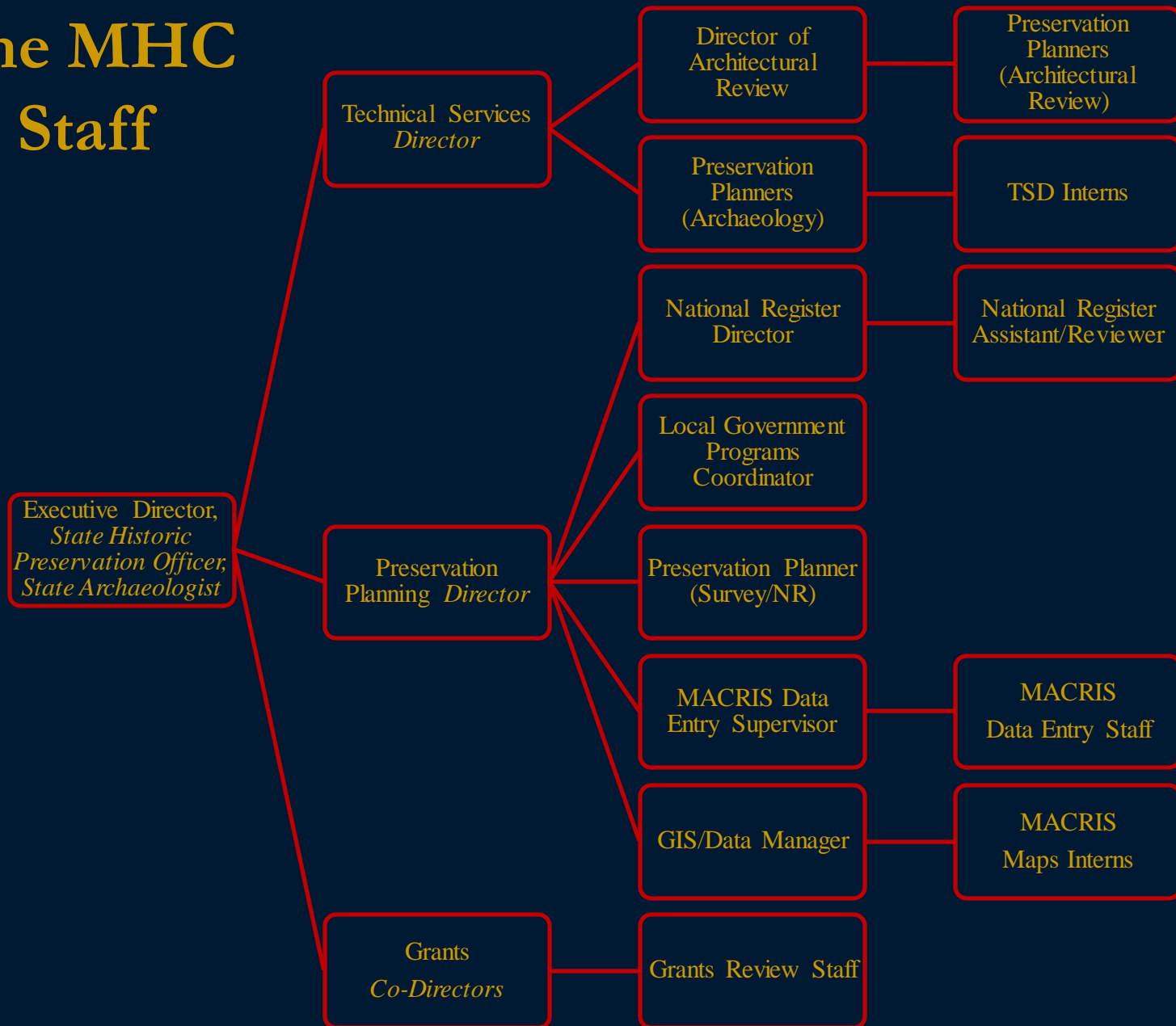
# The Commission



The MHC refers to both an appointed commission and its staff

- Established by state legislature in 1963
  - Within the office of the Secretary of the Commonwealth
- Designated the State Historic Preservation Office (SHPO) with the passage of the National Historic Preservation Act (NHPA) in 1966
  - Is also the office of the State Archaeologist
- 17-member commission chaired by the Secretary of the Commonwealth
  - Two Governor's appointees
  - Three state agencies – DCR, DHCD, EOHEd
  - One trade organization – Home Builders Association
  - 10 historic, architectural, and archaeological organizations
    - Museum of African American History
    - Society of Architectural Historians
    - American Antiquarian Society
    - American Institute of Architects
    - Massachusetts Archaeological Society
    - Old Sturbridge Village
    - Trustees of Reservations
    - Historic New England
    - New England Historic Genealogical Society
    - Massachusetts Historical Society

# The MHC Staff



# Grants Division

- As the Massachusetts SHPO, receive annual funding from federal Historic Preservation Fund
- Manage two main grant programs



## Survey & Planning Grants

- 50/50 reimbursable matching grant
- Municipalities, HCs and HDCs, non-profits, educational institutions
- Eligible activities include survey and inventory, preservation plans, design guidelines, National Register nominations
- Must pass-through 10% of yearly federal funding to Certified Local Governments – do this through S&P program

## Massachusetts Preservation Projects Fund (MPPF)

- 50/50 reimbursable matching grant
- Municipalities and non-profits
- Building must be listed on the State Register
- Eligible activities include both pre-development work and “bricks and mortar” preservation projects
- Requires a preservation restriction be placed on the property after the work is completed

# Preservation Planning Division (PPD)



Preservation  
Planning  
*Director*

National Register  
Director

Local Government  
Programs  
Coordinator

Preservation  
Planner  
(Survey/NR)

MACRIS Data  
Entry Supervisor

GIS/Data Manager

National Register  
Assistant/Reviewer

MACRIS  
Data Entry Staff

MACRIS  
Maps Interns

*An interpretive panel telling the story of Frederick Douglass in front of the Nathan and Polly Johnson House, 21 Seventh Street (white house second from right)*

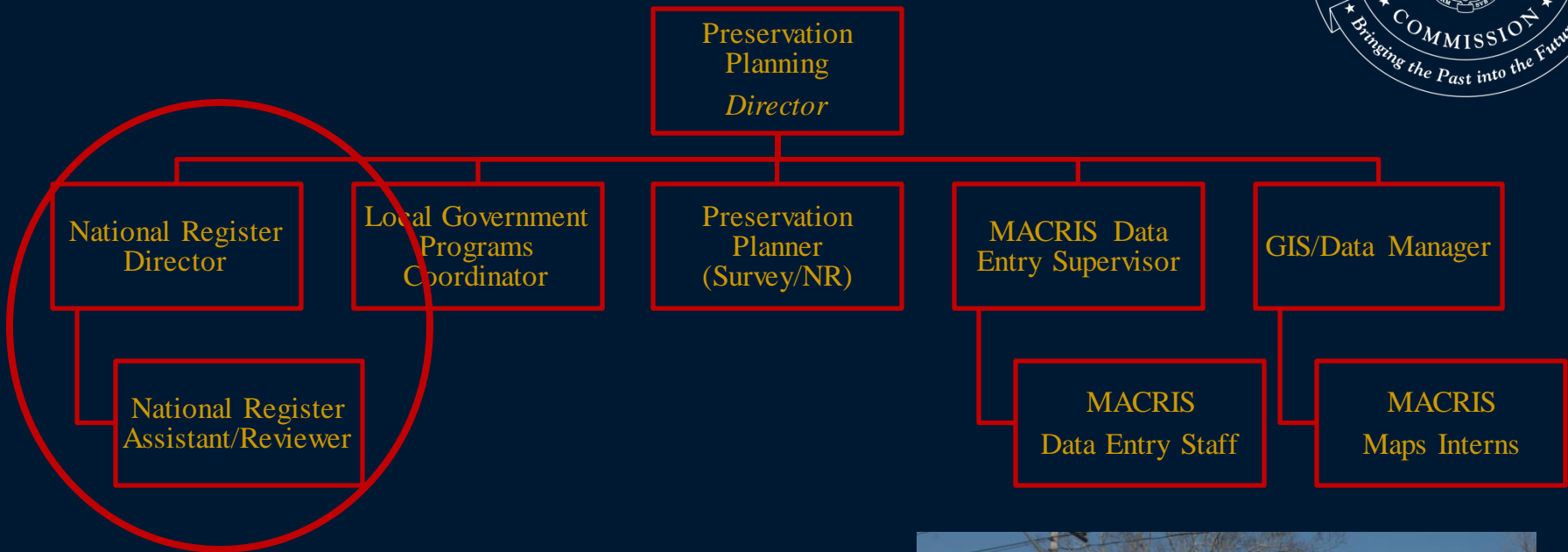
**Abolition Row  
Local Historic District**

New Bedford Historical Commission  
City of New Bedford

WILLIAM FRANCIS GALVIN  
SECRETARY OF THE COMMONWEALTH  
CHAIRMAN, MASSACHUSETTS HISTORICAL COMMISSION



# Preservation Planning Division (PPD)

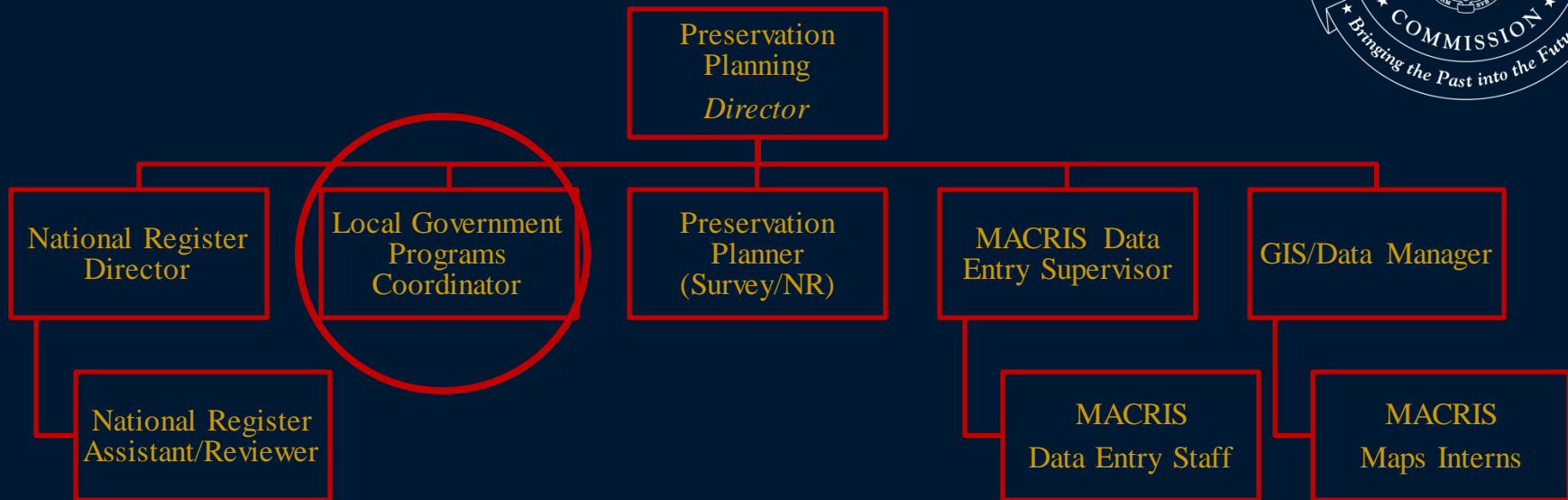


- Make determinations of eligibility
  - Review 50-60 proposals a year
- Take in, review, edit National Register nominations
- Present final nominations to the State Review Board for submittal to the NPS
  - Submit around 25 nominations to the SRB a year

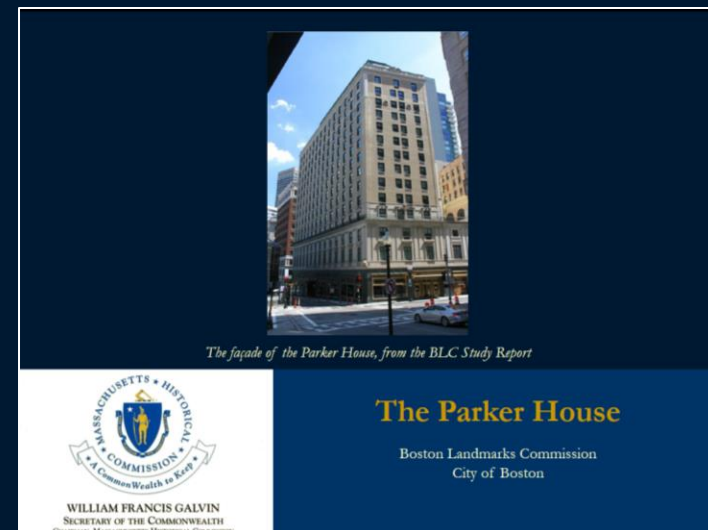


*Southborough Center was listed on the National Register in 2021*

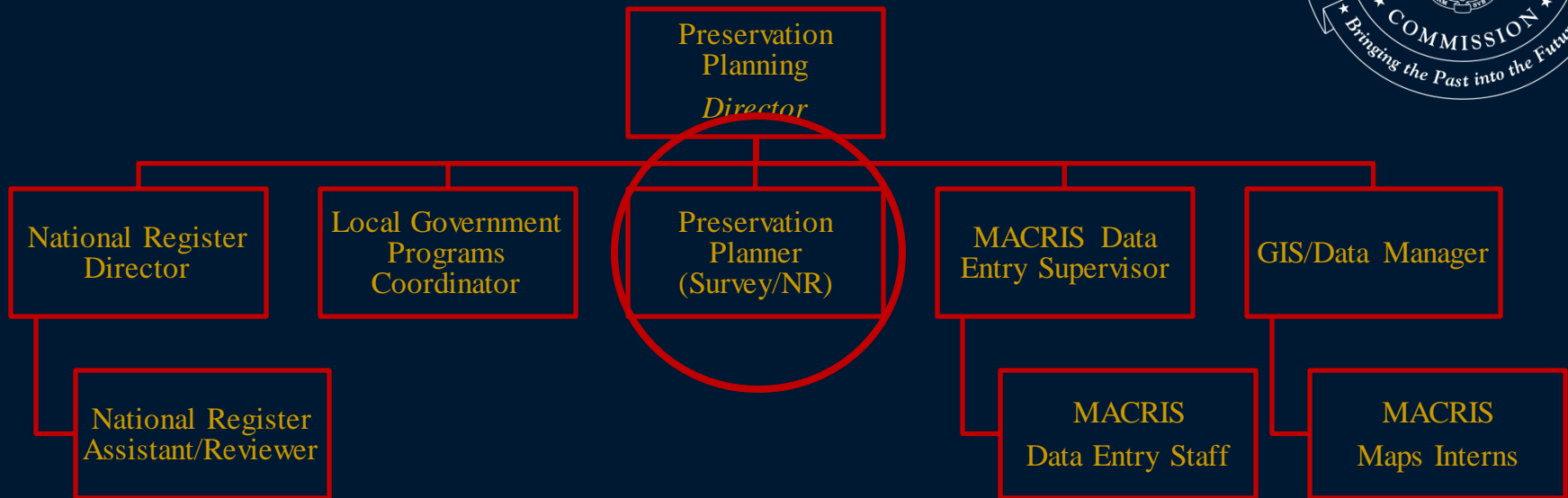
# Preservation Planning Division (PPD)



- Main point of contact for local communities
- Here to answer questions! A lot of phone calls and emails
- Present Preliminary Study Reports for local historic districts to the MHC
- State coordinator for our Certified Local Government program



# Preservation Planning Division (PPD)



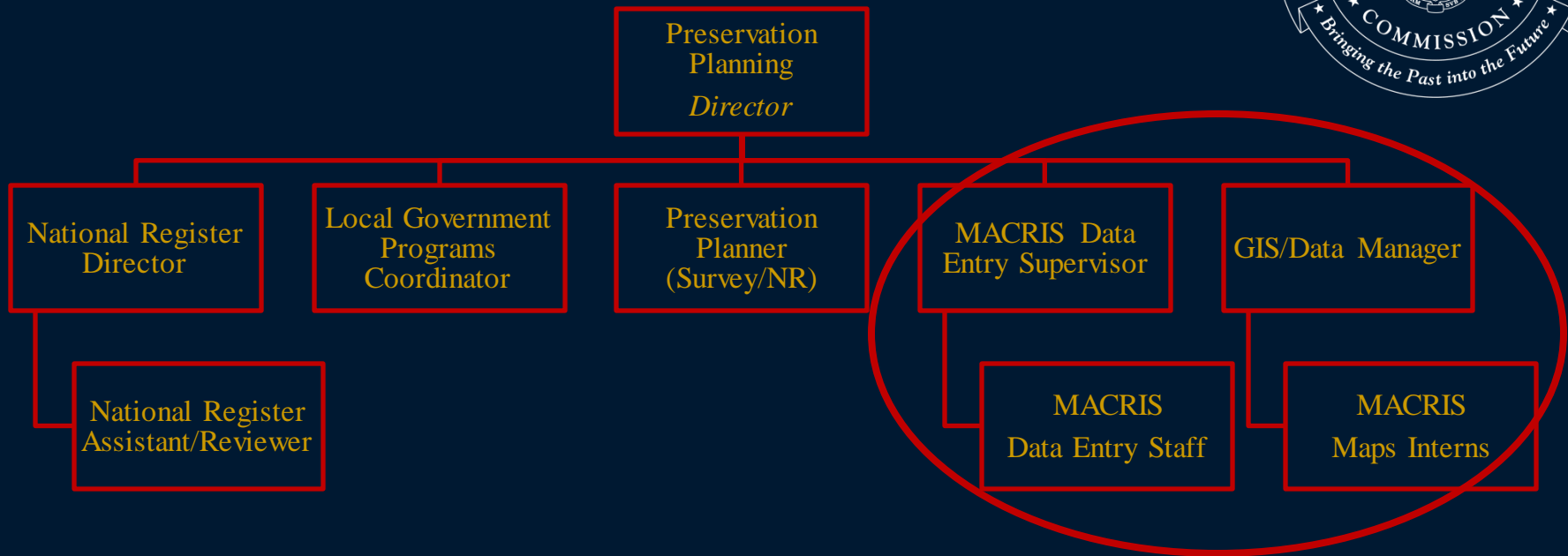
- Handles all survey and inventory form-related work
- Takes in new forms, prepares them for MACRIS
- Manages S&P Grant inventory projects as well as S&P administrative tasks



*A recent survey project in Lynnfield documented a subdivision designed by Royal Barry Wills.*

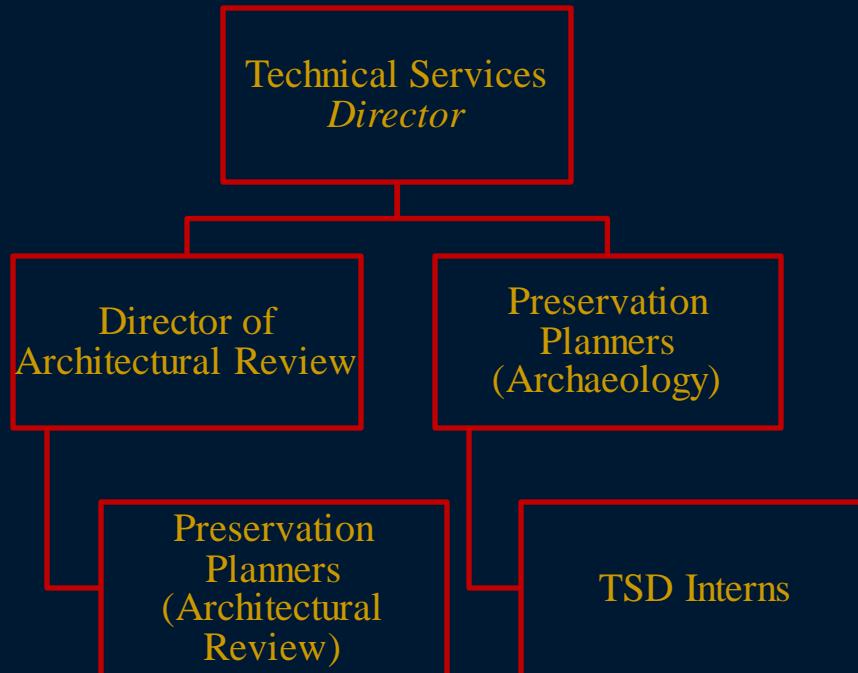


# Preservation Planning Division



- Manage all of our data on historic resources
  - As of December 31 there were 228,980 properties in MACRIS
    - 88% buildings
- Input inventory forms and other documentation into MACRIS
- Map inventory points, areas, districts onto MACRIS Maps

# Technical Services Division (TSD)



- Undertake historic resources review required by federal and state law
- Review federal and state historic tax credit projects



*The Humboldt Avenue Historic District in Boston was a recent tax credit National Register of Historic Places listing*

# Other MHC Responsibilities



## Massachusetts State Historic Preservation Plan 2018–2022

William Francis Galvin  
Secretary of the Commonwealth  
MASSACHUSETTS HISTORICAL COMMISSION  
220 Morrissey Boulevard  
Boston, MA 02125



July 25, 2018

## STATE REGISTER OF HISTORIC PLACES 2021



MASSACHUSETTS  
HISTORICAL COMMISSION  
William Francis Galvin  
Secretary of the Commonwealth

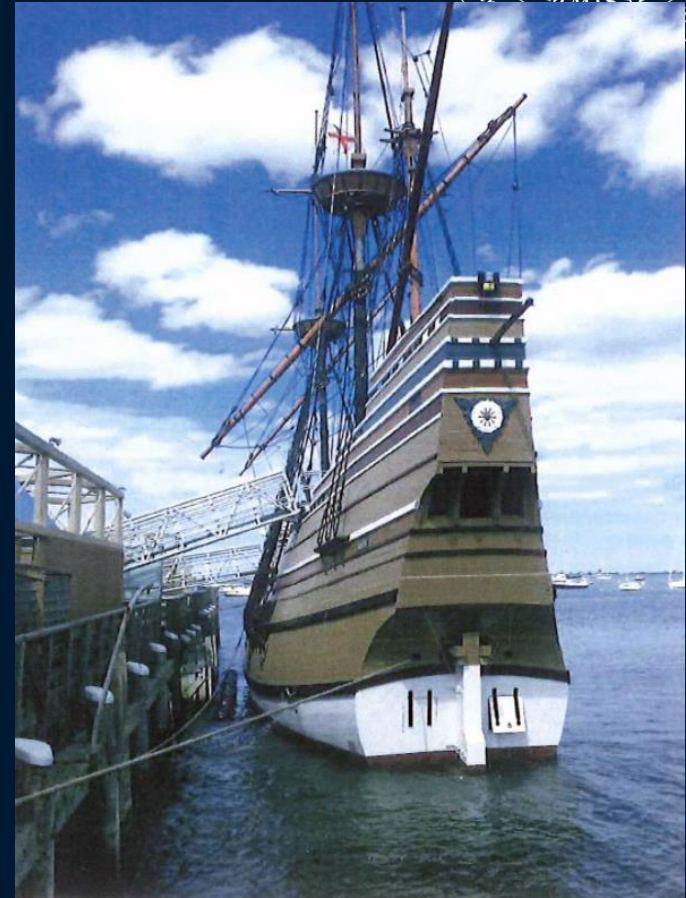
State Bookstore HISTPLACEREGST  
State Register/Historic PI \$27.10



# How Can the MHC Help Your Community?



- Make use of MACRIS and MACRIS Maps
- Work to update your inventory of historic resources
  - We don't know what we don't know
- Attend virtual workshops – check our website for details!
- Apply for our grants
  - Survey & Planning – documentation and planning, announced in September
  - Massachusetts Preservation Projects Fund – pre-development and physical preservation, announced in December
- Respond to requests for comment on projects – you are the local expert on your community's historic resources!
- Ask me questions!



*The Mayflower II was listed on the National Register in 2020*

# The Massachusetts Historical Commission

For more information or additional questions:

[Jennifer.Doherty@sec.state.ma.us](mailto:Jennifer.Doherty@sec.state.ma.us)

(617) 807-0685



WILLIAM FRANCIS GALVIN  
SECRETARY OF THE COMMONWEALTH  
CHAIRMAN, MASSACHUSETTS HISTORICAL COMMISSION

Massachusetts Historical Commission  
Jennifer B. Doherty  
Local Government Programs Coordinator