



NORTH
SUFFOLK
OFFICE of
RESILIENCE &
SUSTAINABILITY

Climate Equity in the North Suffolk Region

Ibrahim López-Hernández, Sustainability Manager
North Suffolk Office of Resilience & Sustainability

December 19, 2022



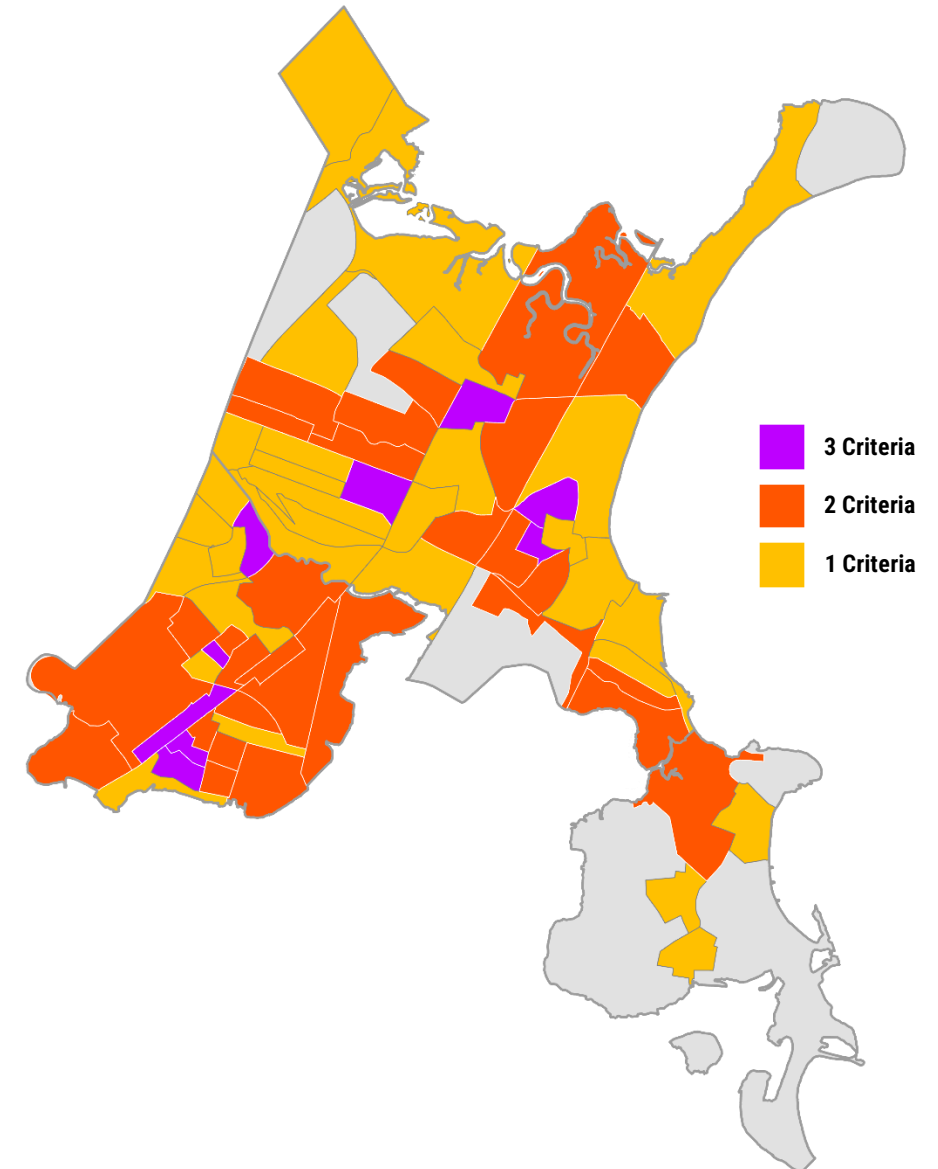
Background



- The region would be the 5th largest Massachusetts municipality by population.
- NSORS was created to tackle regional and individual climate challenges.
- 2 major common climate challenges: air quality and sea-level rise.
- Region home to key logistics and industrial uses, including produce distribution and fuel storage.

	POPULATION	NON-WHITE	HISPANIC LATINO	MEDIAN INCOME	POVERTY
Boston Metropolitan Area	4,899,932	32%	12%	\$100,750	9.3%
North Suffolk Region	119,833	40%	43%	—	15.4%
City of Chelsea	40,025	62%	66%	\$64,782 (-36%)	22.5%
City of Revere	60,720	33%	37%	\$73,041 (-28%)	13.0%
Town of Winthrop	19,088	16%	13%	\$86,780 (-14%)	8.3%

Environmental Justice Areas

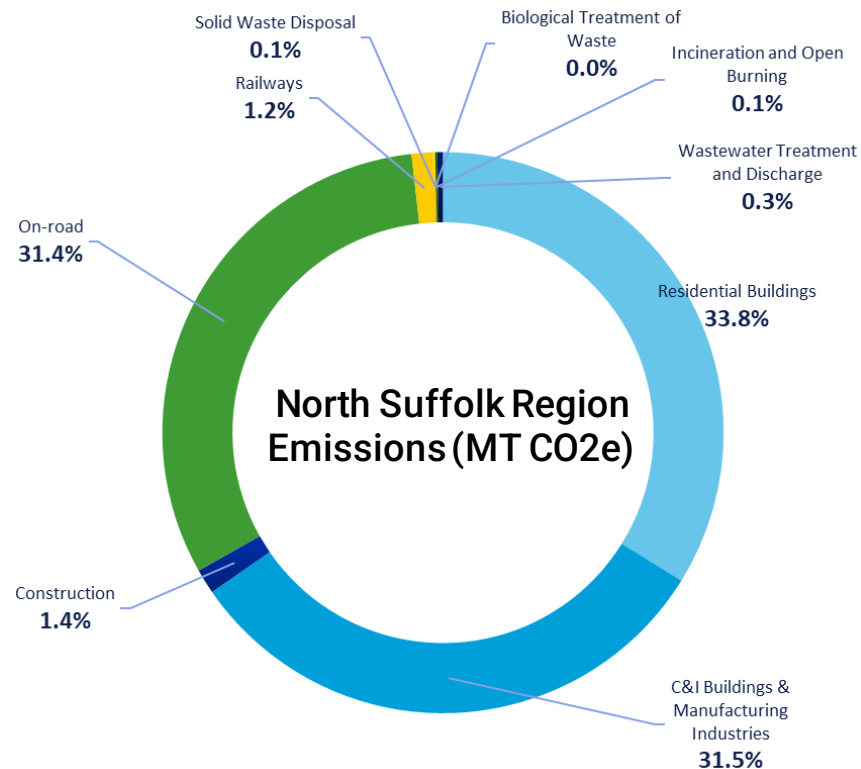


Zero-Carbon Action Plan (ZCAP)



- Goal to reach net-zero by 2050 as established by the Commonwealth of Massachusetts.
- Environmental justice community-based organizations (CBOs) part of core team.

- Steering committee composed by CBO in addition to municipal staff.
- Multi-lingual community engagement.



Mass Save Community-First Partnership



- The Community-First Partnership program aims to increase home energy assessments and energy conservation measures in Environmental Justice communities.
- Due to the greater number of low-income households in the North Suffolk region compared to surrounding communities, coordination with CAP agencies is key.
- Partnering with CBOs has created more trust, especially when residents and businesses have had negative experiences with third-party energy suppliers.



Renters, Homeowners and Landlords

Start saving money and energy with a no-cost Mass Save® Home Energy Assessment

You may be eligible for:

- 75-100% off approved insulation upgrades
- No-cost air sealing
- Up to a \$15,000 rebate for heat pumps to heat and cool your home
- No-cost energy and water-saving products
- And more

Energy efficiency updates can help reduce energy consumption and save money on energy bills.

Schedule your assessment today!

masssave.com/northsuffolk
(617) 485-0789

WE ARE MASS SAVE®

EVERSOURCE **nationalgrid**

Our communities are partnering with the Sponsors of Mass Save® to bring energy savings to all residents and small businesses as part of the Community First Partnership.



Chelsea Community Microgrid

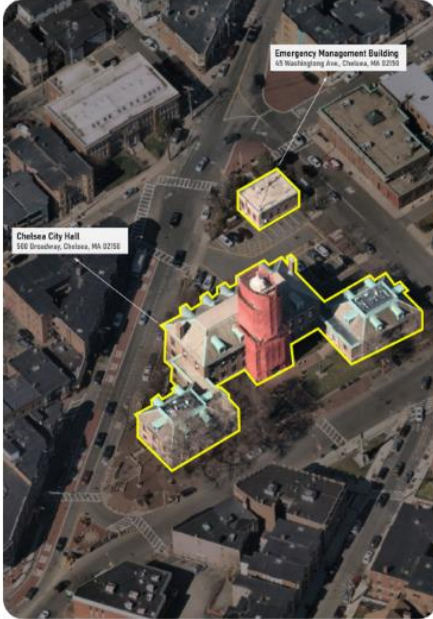


Chelsea Police Department



SAFETY

Chelsea City Hall
Emergency Management Building

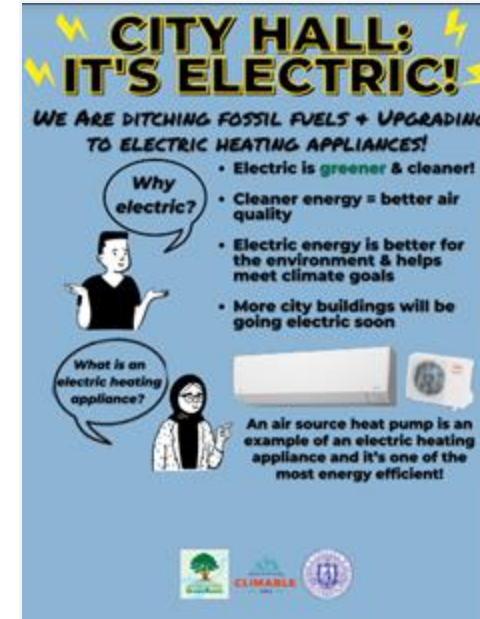


GOVERNMENT & COMMUNICATIONS

Janus Highland Apartments



AFFORDABLE HOUSING



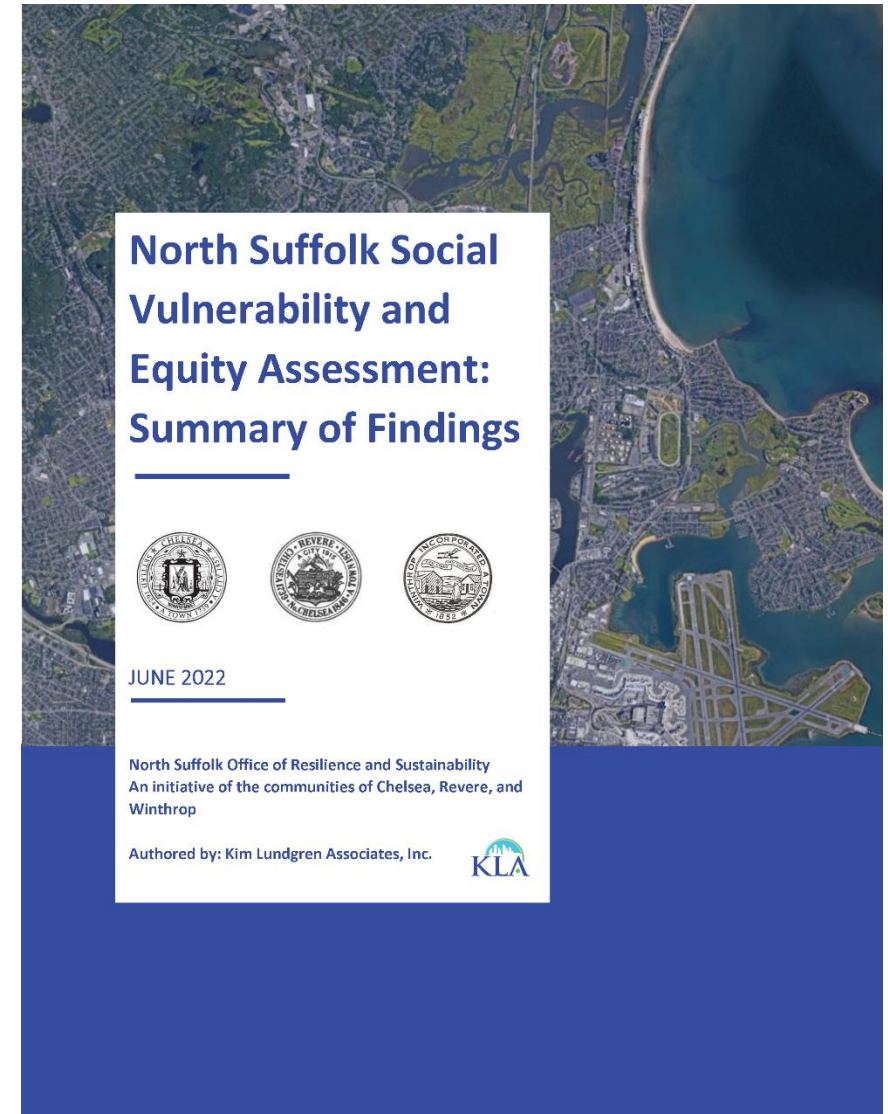
- Goal to provide resiliency to government and social assets through planning and implementation alongside community-based partners.

- Virtual microgrid incorporates affordable housing building where tenants have expressed their preferences related to energy resiliency.

Social Vulnerability & Equity Assessment



- The North Suffolk Social Vulnerability and Equity Assessment aims to aid municipal staff to develop projects and programs with equity in mind.
- The tool evaluates geographical and sociodemographic data to flag any missed opportunities to address possible inequities when planning for climate projects/programs.
- The tool takes into account procedural as well as substantive aspects of equity.
- Goal is to pilot the tool on upcoming opportunities (such as grants), including capital improvement planning.





NORTH
SUFFOLK
OFFICE *of*
RESILIENCE &
SUSTAINABILITY

Thank you

ilopez@chelseama.gov