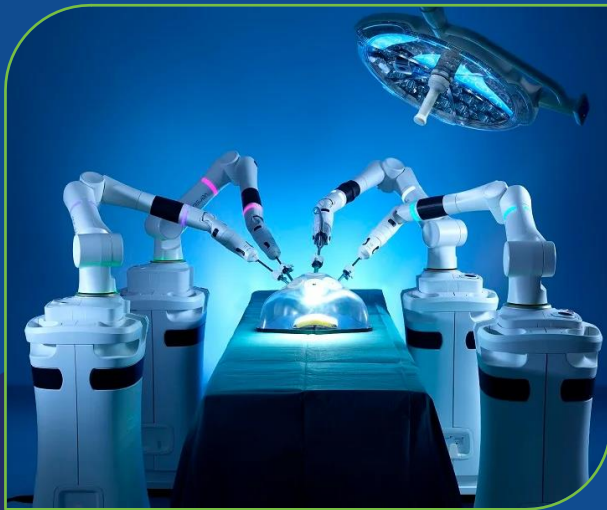


EDA Tech Hubs



Tech Hubs Program Overview

- Initiative by the Economic Development Administration (EDA)
- Purpose: Enhance regional technology and innovation
- Targets: Regions with potential for global tech competitiveness in a decade.

Please note that this is not an official EDA webinar, but one through the Metropolitan Area Planning Council, a federally-designated Economic Development District



Key Areas of Tech Hubs Program

- Geographical concentration
- Ten critical technologies: AI, Machine Learning, Quantum Science, Robotics, Advanced Communications, Biotech, Data Storage, Advanced Energy Tech, Advanced Material Science
- Ten-year time frame for global competitiveness



Consortia Structure

- Consortium eligibility, legal structure, and roles are clearly defined
- Must include a range of organizations: higher education institutions, industry groups, economic development organizations, labor organizations
- EDA requires that each consortium identify a lead consortium member
- A diverse consortium can lead to better representation and more innovative ideas



Program Implementation Phases



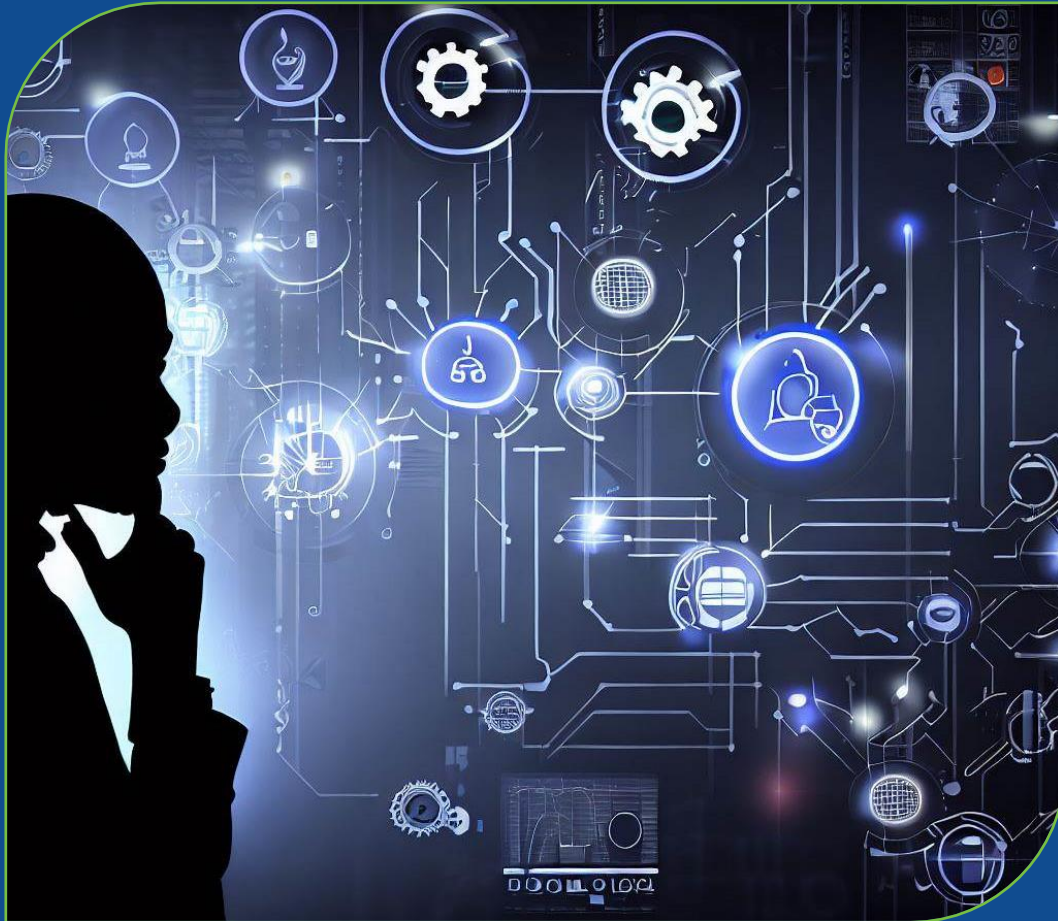
Phase 1:

- Strategy Development Grants
- Regional Designation as Tech Hubs

Phase 2:

- Funding for Implementation projects for designated Tech Hubs

Phase 1 - Strategy Development Grants



- Grants range from \$400,000 to \$500,000 in Federal funds
- Period of performance typically ranges from 18 to 36 months
- These grants aid regions to coordinate, plan, and develop their applications.
- Can apply for Implementation funding or Designation in future competitions.
- These grants are crucial resources for the initial planning and coordination stages.

Strategy Development Grants - Scoring



- The extent to which the project will strengthen engagement of and collaboration among regional stakeholders **(15 pts)**
- The consortium's organizational and leadership capacity, including its financial and management capacity **(15 pts)**
- The project's potential to increase the capacity of the region to achieve the Designation criteria **(15 pts)**

Total: 45 Points

Phase 1 - Tech Hub Designation

- EDA will designate up to 20 regions as Tech Hubs
- Must show tech potential, assets, private sector involvement, equity, workforce, innovation, and economic impact
- Is unfunded, but is a strong signal of a region's potential and is a prerequisite to applying to the Phase 2 NOFO, through which EDA will award Implementation funding



Tech Hub Designation - Scoring

- Technology-based potential of the region for global competitiveness (15)
- Role of the private sector (6)
- Regional coord & partnerships (6)
- Equity & diversity (6)
- Capacity of the regional workforce (6)
- “Lab to market” approaches (6)
- Impact on US econ & nat’l security (6)

Total: 51 Points



Phase 2 - Implementation Grants

- Phase 2 marks the operational phase of the Tech Hubs Program
- Release expected by Fall 2023
- EDA expects to award approximately \$50-75 million to each Phase 2 awardee
- Implementation grants carry the strategies developed in Phase 1 into practical application



Geographic Eligibility & Diversity



- Tech Hubs program allows Metropolitan Statistical Areas (MSA) or similar areas
- Emphasizes geographic diversity
- Specific provisions for small and rural communities
- At least one-third of grants must benefit small and rural communities
- At least one-third of grants must include a member from an EPSCoR-eligible state or territory

Equity



- Applicants must identify populations benefiting from their projects and share economic advantages among all communities
- Equitable sharing of benefits includes high-wage jobs, breaking barriers, supporting minority-owned businesses, and fostering broad-based economic growth
- Collaboration with institutions serving underrepresented populations in STEM is encouraged
- High-quality letters of support from entities representing underserved communities, businesses, and workers is recommended

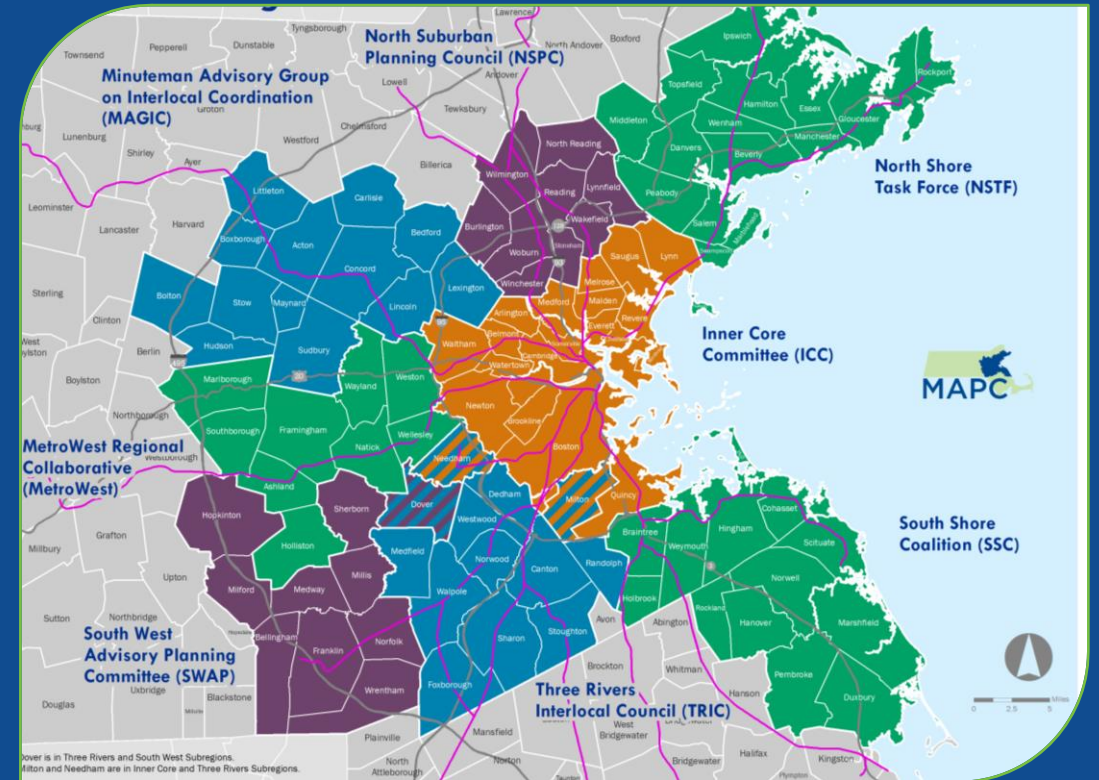
Application Deadline Information



- Deadline for Phase 1 applications: 11:59 p.m. Eastern Time on August 15, 2023
- Applications received after this deadline will not be reviewed or considered
- Only those that are Designated as Technology Hubs in Phase 1 will be permitted to apply to Phase 2
- It is anticipated that the Notice of Funding Opportunity for Phase 2 will be made available in fall 2023

Current Role of MAPC

- Help connect potential partners as well as similar applicants to one another.
- Providing letters of support to applications that align with our values, particularly the Comprehensive Economic Development Strategy.
- MAPC will not be an applicant for the Tech Hubs program.





Contacts

For questions concerning this Tech Hubs Phase 1 NOFO, or more information about EDA programs, you may contact

techhubs@eda.gov

Additional EDA Program – B2S

- B2S strengthens equitable ecosystems and boosts capital access for startups, driving regional economic growth.
- Venture Challenge supports high-growth technology entrepreneurship & inclusive access to proven support models.
- Capital Challenge increases capital access in areas with limited risk capital through early-stage investment funds & training programs.
- Eligibility includes cities, states, nonprofits, higher ed, public-private partnerships, and gov't supported entities.





Q&A & Discussion

How can we best align our individual organizational goals with the broader objectives of the Tech Hubs program?

What are your experiences or strategies for building effective consortia for similar initiatives including geographically?

How can we effectively merge the interests of higher education, government entities, and private sector groups in a Tech Hub consortium?

What have been some key challenges or barriers in developing and implementing similar tech-focused initiatives, and how have they been overcome?

Can anyone provide examples of how their organization has fostered diversity and inclusion within the tech sector, particularly regarding underrepresented communities?

Thank You!



Raul Gonzalez

RGonzalez@MAPC.org



Angela Brown

ABrown@MAPC.org

