



Accelerating Climate Resilience Municipal Grant Program Webinar

August 21, 2023



Meet the Team!



Van Du
Assistant
Director of
Environmental
Planning



Kat Kobylt
Environmental
Planner II



**Francelis
Morillo Suarez**
Clean Energy and
Climate Planner I



**Kristen
Homeyer**
Environmental
Planning Intern



Elisa Guerrero
Environmental
Planning Intern

Webinar Agenda:

1. Introductions
2. Program Overview and Priorities
3. Grant Types and Timeline
4. Resources and Project Examples
5. Q&A

Program Overview

Accelerate climate resilience in the region by helping municipalities advance strategies that protect people, places, and communities from the impacts of climate change

- ✓ Deploy actionable interventions through local projects, policies, and strategies.
- ✓ Facilitate long-term changes and readiness for climate change impacts.
- ✓ Advance climate equity, regional coordination, and social cohesion.



ACR Program Priority Areas



Nature-based solutions for climate resilience



Municipal climate resiliency policy



Innovative financing or infrastructure investment models



Capacity building through coalitions or convenings



Contributions to social resiliency or cohesion



Combined mitigation and adaptation strategies



Local food systems or agricultural resiliency measures



District-scale climate resiliency pilots



Public outreach, marketing, artistic, cultural projects to advance knowledge & action

Examples of Climate Action

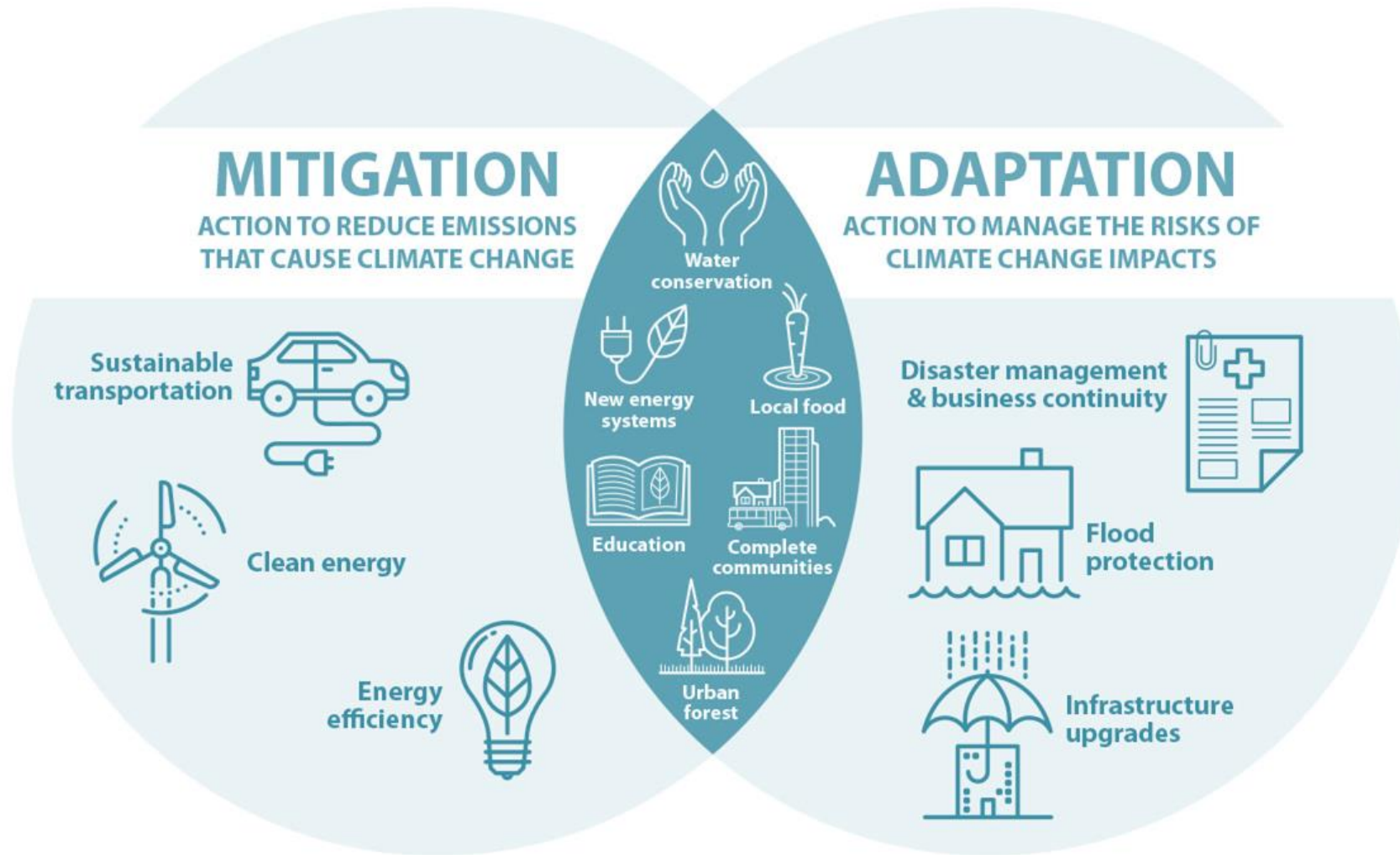
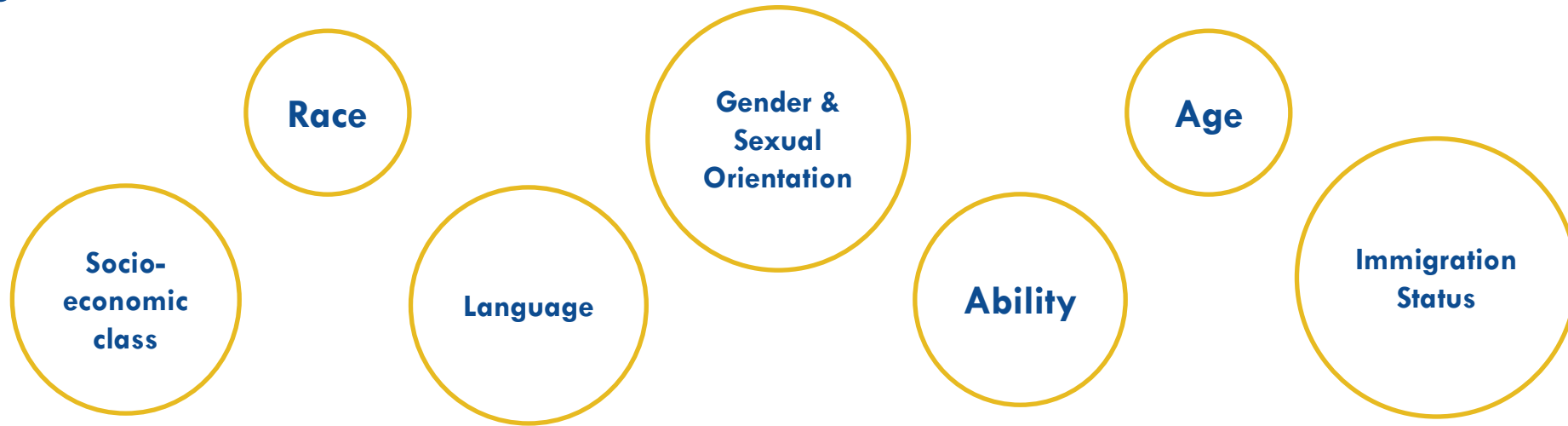


Image credit: City of Calgary (CAN) Climate Change Program

Equity and Climate Resilience

Not everyone is affected equally by climate change. Existing social factors and inequities shape how people experience climate impacts and climate adaptation strategies.



MAPC seeks to elevate projects that will advance climate equity, regional coordination, and social cohesion particularly for populations or neighborhoods most vulnerable to climate change.

Centering Equity in Your Projects

For each project, consider:

Who has been historically impacted by this issue?



Who will be most impacted by the types of changes to our climate we expect to see?



How will the benefits of this strategy be distributed? And any harms?



Whose voices need more representation in decision making on this strategy?



Resilience Community of Practice

- ✓ Workshops and site visits
- ✓ News & Updates
- ✓ Member directory
- ✓ RCOP Buddies



Accelerating Climate Resilience Speaker Series

Conversations with experts and practitioners from across the country who can speak to the ways they are perceiving and advancing resilience.

Past events include conversations about the effects of sea level rise on municipal budgets, climate resilience and racial justice, building social resilience through art, and empowering youth movements on climate.



Our Speakers



Pooja Tilvawala
Youth Engagement Manager
for The Climate Initiative;
Executive Director of the
Youth Climate Collaborative



Daniela Kunkel-Linares
Youth Environmental
Activists (YEA!) Coordinator
for Climate Generation



Simone Colburn
Co-Founder of Spring
Forward



FY24 ACR Invitation for Proposals

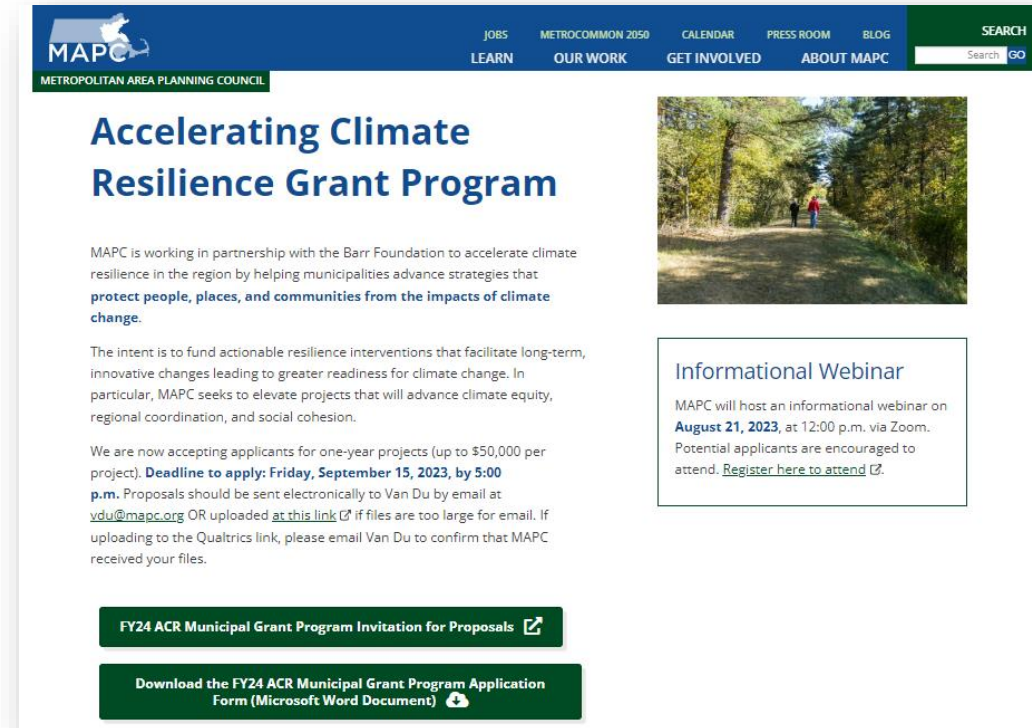
Now accepting applications!

Deadline to submit: September 15th, by 5PM

One-year grants, up to \$50,000 per project

Eligible project types:

- Technical assistance or design
- Capital, construction projects
- Capacity building initiatives



The screenshot shows the MAPC website with a blue header containing navigation links: JOBS, METROCOMMON 2050, CALENDAR, PRESS ROOM, BLOG, and a SEARCH bar. Below the header, the main content area features the title "Accelerating Climate Resilience Grant Program" in large blue font. To the right of the title is a photograph of a dirt path winding through a forest. Below the title, the text states: "MAPC is working in partnership with the Barr Foundation to accelerate climate resilience in the region by helping municipalities advance strategies that protect people, places, and communities from the impacts of climate change." It then describes the intent to fund actionable resilience interventions. A call to action states: "We are now accepting applicants for one-year projects (up to \$50,000 per project). Deadline to apply: Friday, September 15, 2023, by 5:00 p.m. Proposals should be sent electronically to Van Du by email at vd@mapc.org OR uploaded at this link if files are too large for email. If uploading to the Qualtrics link, please email Van Du to confirm that MAPC received your files." At the bottom of the main content area are two green buttons: "FY24 ACR Municipal Grant Program Invitation for Proposals" and "Download the FY24 ACR Municipal Grant Program Application Form (Microsoft Word Document)". On the right side of the page, there is a sidebar with the heading "Informational Webinar" and text: "MAPC will host an informational webinar on August 21, 2023, at 12:00 p.m. via Zoom. Potential applicants are encouraged to attend. [Register here to attend](#)."

Visit www.mapc.org/acceleratingresiliency to download forms.

FY24 ACR Grant Timeline

Task	Deadline
Expression of Interest & Office Hours	July 17 – August 11, 2023
FY2024 Invitation for Proposals Open	August 15, 2023
Proposals Due	September 15, 2023
Award Announcements	November 2023
ACR Project Start & End Date	January – December 2024
Mid-Year Reporting	June 30, 2024
Project Completion and Final Reporting	December 31, 2024

Evaluation Criteria

- Target at least one of the nine Program Priorities
- Identify one or more specific climate risks and how the project will strengthen resilience
- Demonstrate feasibility through an achievable scope of work and timeline, project team capacity, and realistic budget
- Be designed and implemented with an equity lens
- Demonstrate meaningful engagement and support from the public, or a clear path for generating public support
- Create opportunities for learning, replication, and the development of best practices.

Projects that advance climate equity and directly benefit climate vulnerable populations are given higher priority

Questions about Program Overview and Logistics?



Municipal Resilience Zoning, Regs, Financing*

UNDERSTANDING

Green Infrastructure In Zoning

PURPOSE

Measurable standards can be adopted within municipal zoning codes, and subdivision and stormwater regulations, to promote a comprehensive approach to Low Impact Development and the integration of green infrastructure in community development.

There are many opportunities within local zoning codes and subdivision and stormwater regulations to promote Low Impact Development (LID) standards and green infrastructure including the use of incentives, code requirements with standards, and a well-defined planning process that promotes coordination between preliminary plans, site plans, and stormwater management plans. Examples include incentives such as density bonuses, infiltration requirements with design standards, and planning for multipurpose functionality of design elements such as buffers and screening for landscaping and stormwater management. Rather than adopting a separate bylaw that may conflict with other sections of the zoning code, integrate green infrastructure throughout such that it becomes the norm not an exception.

Many green infrastructure strategies have multiple benefits and offer a more comprehensive approach for addressing a range of issues and challenges. For example, a green roof takes up no extra space at all, manages storm water by reducing peak flows, improves the heating and cooling efficiency of a building, and has the potential to be a source of food production. Techniques such as bioretention areas, grass filter strips, and swales can also meet landscaping and open space requirements while addressing stormwater treatment and infiltration.



RISKY WATERS

Everyone knows it's a bad idea to build new development on flood-prone land. So why do we keep doing it?

HOUSES NEAR A CONSTRUCTION SITE ON SOUTH CAROLINA'S JOHN'S ISLAND

Building Homes in Flood Zones: Why Does This Bad Idea Keep Happening?

As cities try to manage their growth, the population of people living in flood-prone areas is actually rising faster than elsewhere.

INFRASTRUCTURE & ENVIRONMENT

METROPOLITAN AREA PLANNING COUNCIL

Climate Resilient Land Use Strategies

Regulatory Language and Policy Examples

Floodplain Overlay Districts	Floodplain Zoning Relief	Stormwater Regulations
Wetlands Regulations	Site Plan Review	Water Conservation Regulations
Tree Protection Regulations	Design Standards & Guidelines	Other Zoning Districts

* If zoning project includes Town Meeting adoption, keep in mind the timeline!

Exploring synergies between climate adaptation and mitigation and other co-benefits

District-scale pilots



Chelsea is Building a Community Microgrid!

This project will help you and your neighbors stay safe in a power outage. Using clean sources of energy, we are creating a *microgrid*, which will provide reliable electricity to participating buildings even when the grid has an outage!



During the really hot summer days, what do you do to stay cool? Where would you go if you had no power?

Resilience in Chelsea

¿Cuáles son sus principales necesidades en el caso de un apagón eléctrico?

In the case of a power outage, what are your most important needs?

¿Qué podemos implementar ante un desastre climático/ ambiental de nuestra respuesta a la pandemia?

What can we implement from our pandemic response to a climate/ environmental disaster?

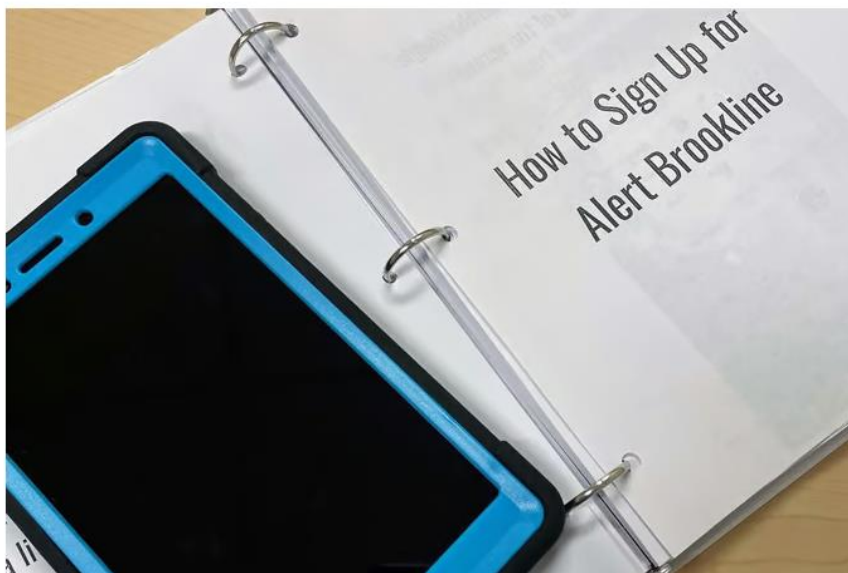




Improvements to social resiliency or cohesion

Town of Brookline Offers 'Tech Buddies' Program To Supply Low-Income Seniors with Tablets and Internet Access Amid Pandemic

NOVEMBER 29, 2021 BY JGPRROBERT



Outreach, marketing, or arts and culture projects that advance climate change knowledge or action.

NEW PERSPECTIVE ON CLIMATE CHANGE: REMEMBRANCE OF CLIMATE FUTURES/ARLINGTON

join us for a
Celebration!

SUNDAY
OCT 31
1-2 PM

Join the teen interns of
Climate Futures/Arlington!
See their project on the Fox Library

SUNDAY, Oct 31, 1-2 outside the Fox Library • NOTE NEW DATE FOR RAIN! • 175 Mass Ave, Arlington
RSVP requested to: ClimateFuturesArlington@gmail.com www.ArtsArlington.org



Cool it with Art

How artists and organizations
are tackling rising temperatures
with art

MAPC
METROPOLITAN AREA PLANNING COUNCIL

Local food systems or community agriculture resiliency measures





Capacity building through coalitions or convenings

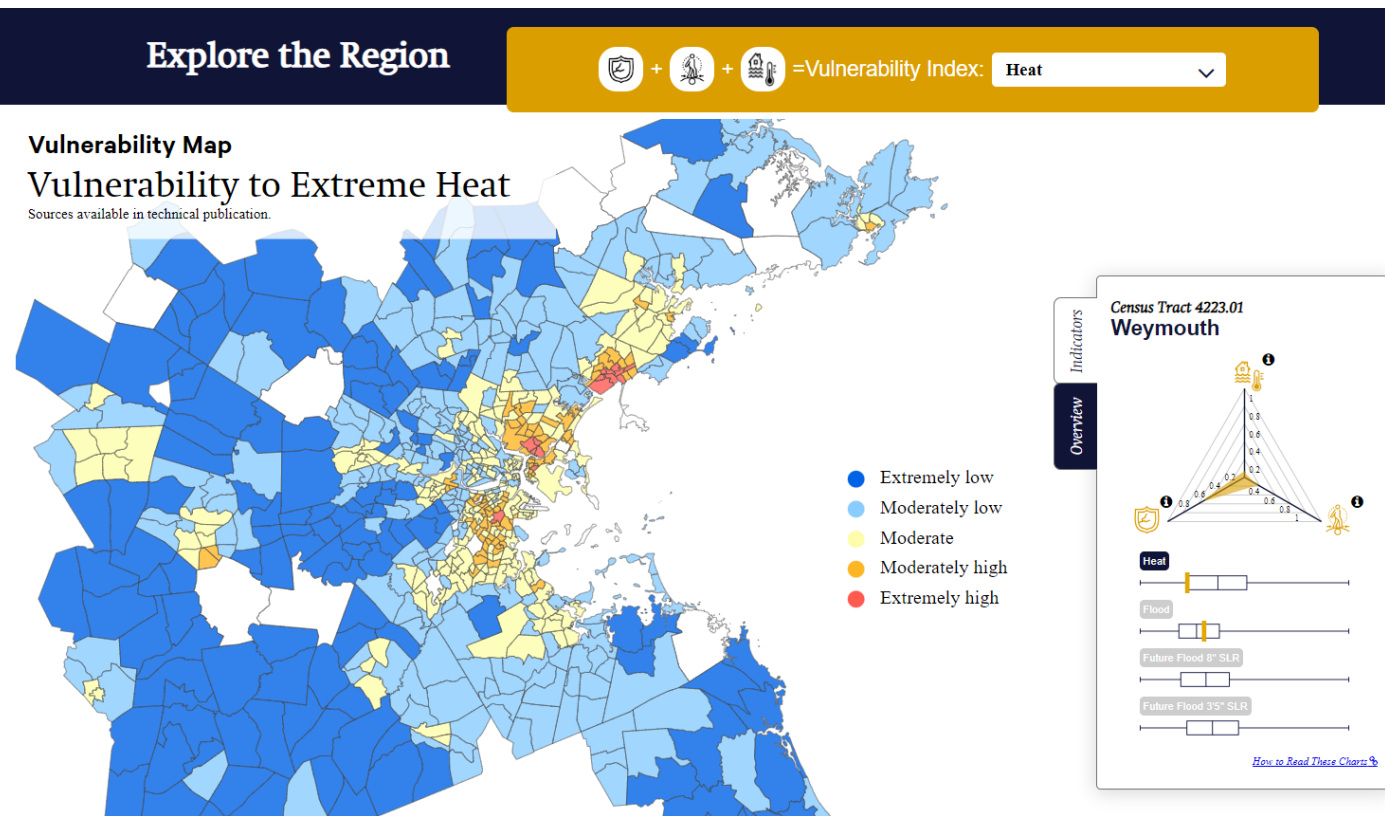


Check out Appendix C for more potential project examples!

Priority Areas	Grant Type		
	Technical Assistance/Design	Capital	Capacity Building
Nature-Based Solutions	Design, engineering, and/or feasibility of a climate-smart park or playground.	Green Infrastructure retrofit in park.	Research and convene stakeholder group focused urban forestry with carbon trading program model
	GHG accounting of nature-based resources with carbon sequestration potential (e.g., soils, trees, wetlands)	Green Infrastructure installation in an existing park improvement project.	Equity-driven community engagement process on identifying and addressing greatest need for nature-based solutions in a community or neighborhood.
	Open Space and Recreation Plans that prioritize climate resilience.	Collective purchasing (with multiple municipalities) of street trees. Strategic planting of street trees.	Community outreach, training programs to support the development and maintenance of community green spaces (including pollinator gardens, community farms/gardens, food forests, etc.)
	Park Equity Assessment that considers climate and park accessibility.	Increased connectivity of parks, trails, and municipal assets for walking and biking.	
	Hydrologic analysis for stormwater interventions in vulnerable neighborhoods.	Salt marsh restoration project	

Tools & Resources

- Regional Climate Vulnerability Index & Mapping Tool
<http://climate-vulnerability.mapc.org/>



Tools & Resources



METROPOLITAN AREA PLANNING COUNCIL

[JOBS](#) [METROCOMMON 2050](#) [CALENDAR](#) [PRESS ROOM](#) [BLOG](#)
[LEARN](#) [OUR WORK](#) [GET INVOLVED](#) [ABOUT MAPC](#)

Hybrid Engagement Hub: Navigating Together

Interested in offering hybrid meetings with opportunities for both online and in-person public participation? Learn more in our webinar series and other hybrid engagement resources.

[➤ View Resources](#)

Virtual Engagement Toolbox

A guide to digital engagement tools and methods that municipal staff can use to engage the public remotely. This document is intended as a resource and does not constitute an endorsement of any of these tools.

[➤ Download](#)

Group Agreements Guide

Group agreements are an essential part of any well-facilitated meeting, setting the tone and acting as a way to hold participants accountable in a shared conversation. Our guide describes how and when to use group agreements and makes specific recommendations for your meetings.

[➤ Download](#)

Community Engagement Recipe Book

A menu of community engagement tactics you can use for your project. Click through to learn about strategies such as focus groups, participatory budgeting, and more!

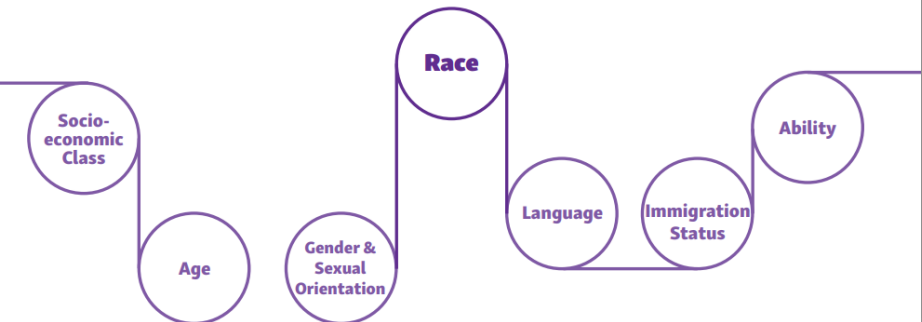
[➤ Download](#)

Framework for Equity

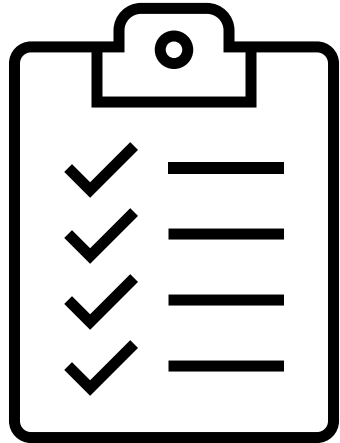
Written by Nicole Sanches, Clean Energy Coordinator
Designed by Kit Un, Visual Designer



How Climate Intersects with Existing Inequities



Proposal Tips & Recommendations



- Regional collaboration!
- Connect your project with your municipal planning efforts. The grant is to advance implementation of planning efforts.
- Project readiness and capacity are important - partner if you can.
- Leverage other local, state, and/or federal funds.
- Community support can make or break a project.
- Prioritize climate equity.
- Be clear of your proposed deliverables.

Questions & Discussion

Heat Preparedness Week 2023: Climate Change is a Public Health Issue

Each day, we'll focus on a different theme:

- **Monday, August 21:** Introduction to Extreme Heat
- **Tuesday, August 22:** Housing and Transportation
- **Wednesday, August 23:** Schools and Workspaces
- **Thursday, August 24:** Open Space and Social Cohesion
- **Friday, August 25:** Recap

- August 20th – 26th: highlighting the public health impacts of extreme heat and climate change
 - Includes: irregular weather patterns, increased air pollution, increased risk of infectious diseases
- Provides opportunities for CBOs and municipalities to provide resources and raise awareness on heat issues

Additional MAPC Happenings

celebrating
60 years

*Looking Back,
Continuing Forward*

MAPC's 60th Anniversary Event

Thursday, September 21, 2023 | 4:30 - 7:30 p.m. | The Foundry in Cambridge, MA

Registration: mapc.ma/60th-Registration

Email: 60thAnniversary@mapc.org

A scenic view of a city skyline across a body of water. In the foreground, several people are kayaking on the water. The middle ground is filled with lush green trees and vegetation. In the background, a city skyline with various skyscrapers is visible under a cloudy sky. The text "Thank You!" is overlaid in the center of the image.

Thank You!