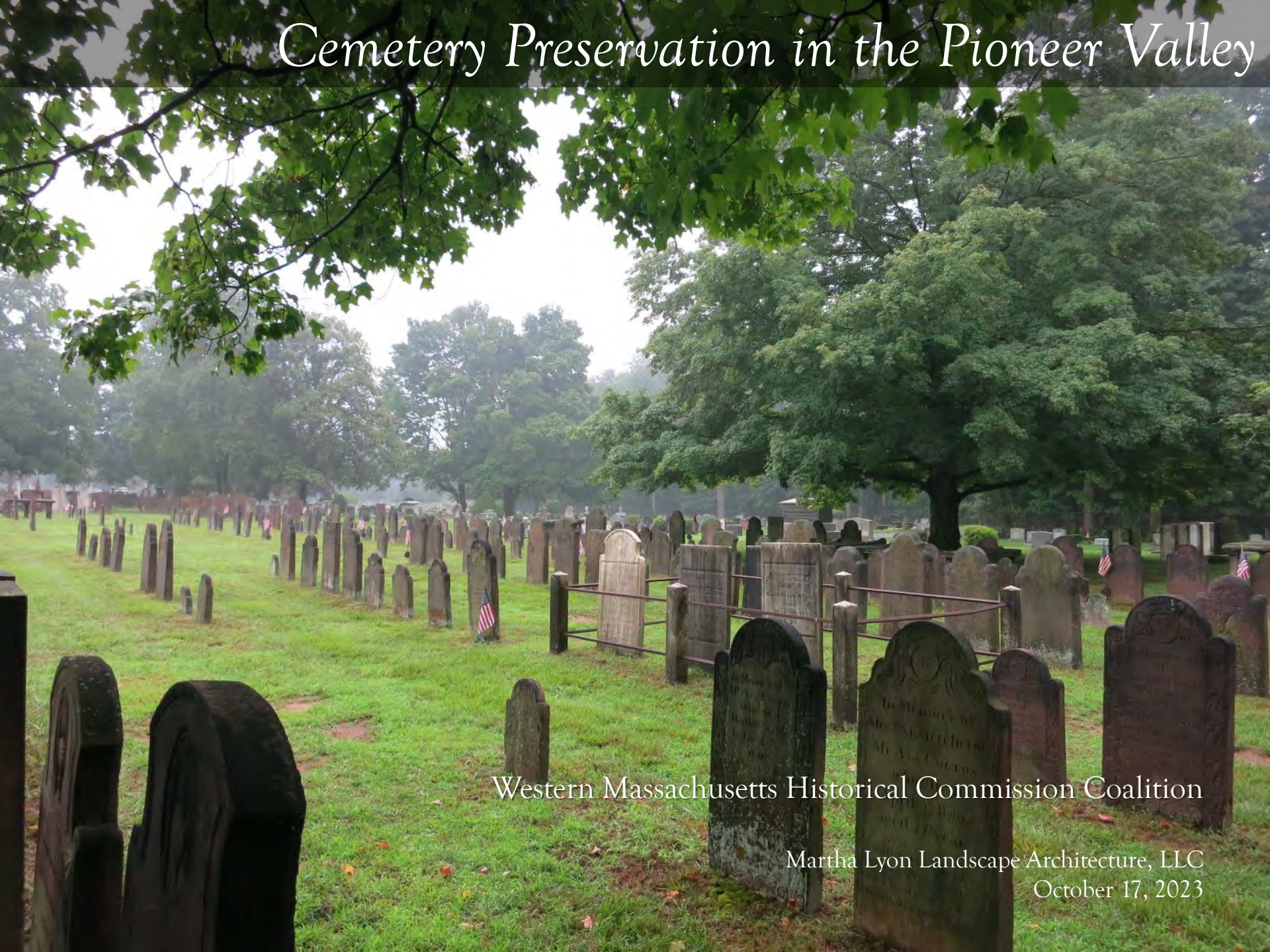


# Cemetery Preservation in the Pioneer Valley

A photograph of a cemetery with numerous gravestones, some marked with American flags, and large trees in the background. The scene is captured from a low angle, looking down a row of gravestones that recede into the distance. The gravestones are of various shapes and sizes, some weathered and others more recent. Several small American flags are placed near the stones. Large, leafy trees frame the top and right sides of the image, and a large tree stands prominently in the middle ground on the right. The sky is overcast and hazy.

Western Massachusetts Historical Commission Coalition

Martha Lyon Landscape Architecture, LLC  
October 17, 2023

*In this quiet valley, as in the palm of  
Nature's hand, we shall sleep well when we  
have finished our day.*

*Ralph Waldo Emerson, 1855*





*Keepers of Stories*





Outdoor Museums





*Quiet Open Spaces*



# *Places of Refuge*







*Invisible.*







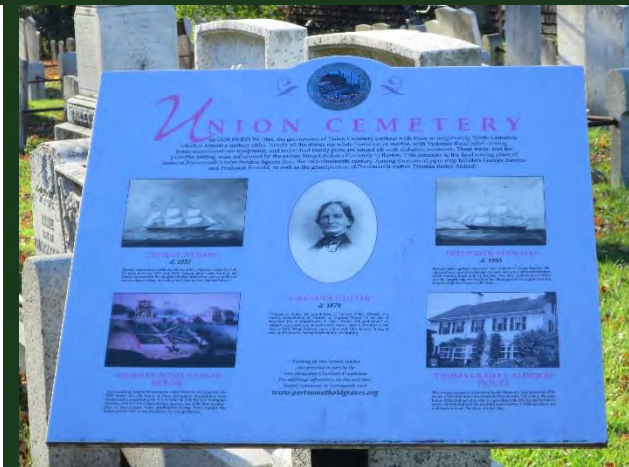
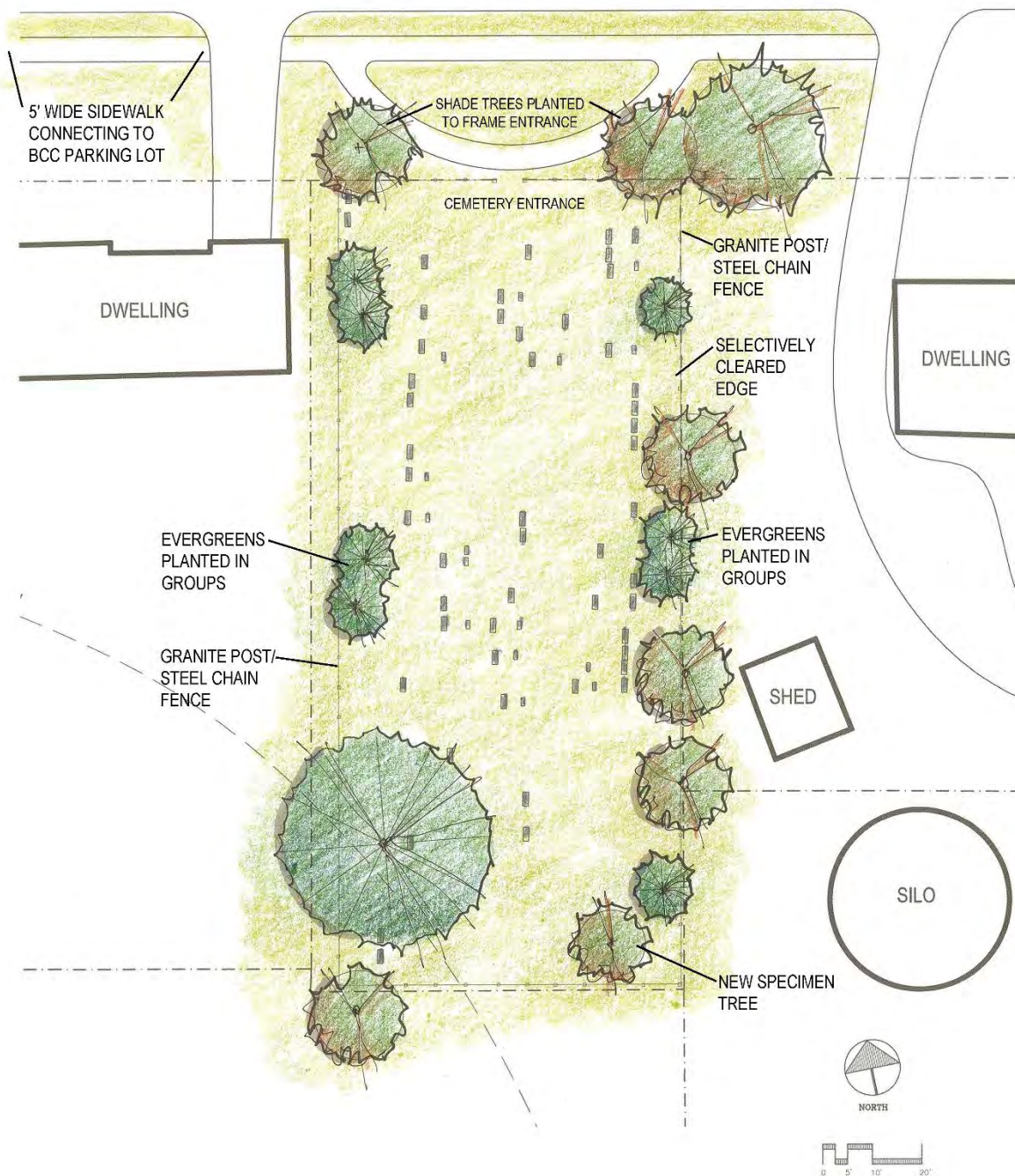






Misunderstood.



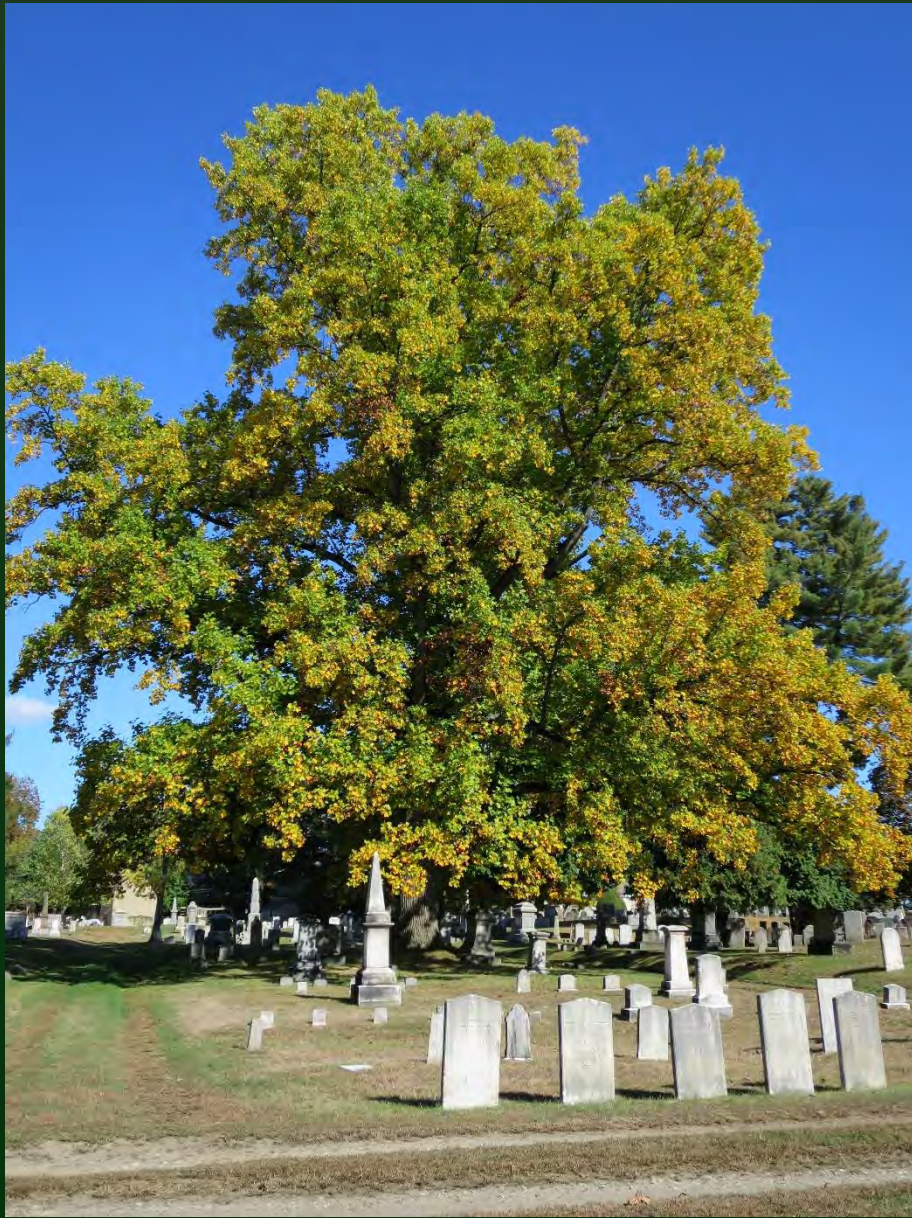






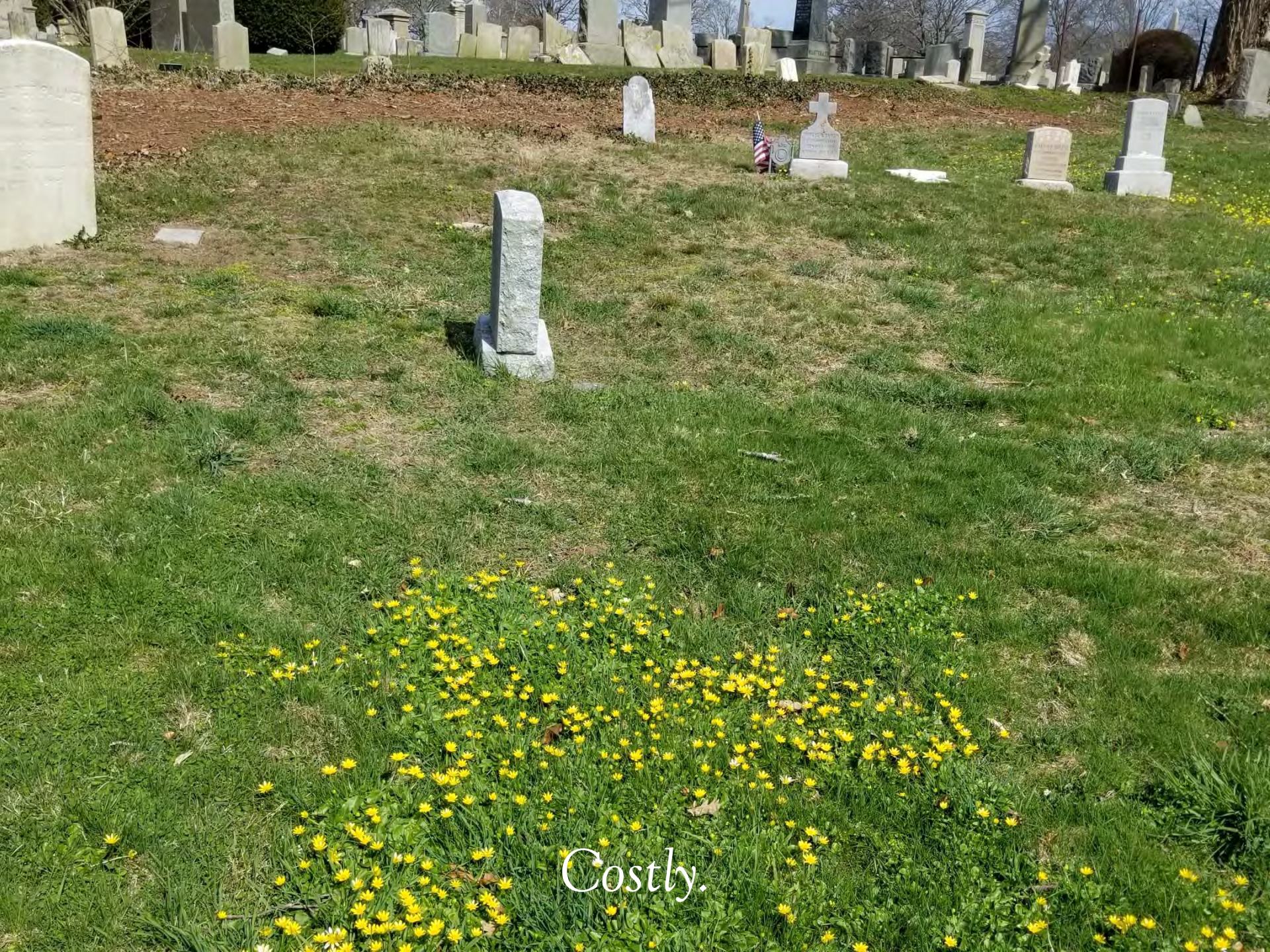
Costly.





Costly.





Costly.



**RIVERSIDE  
CEMETERY**

est. 1774

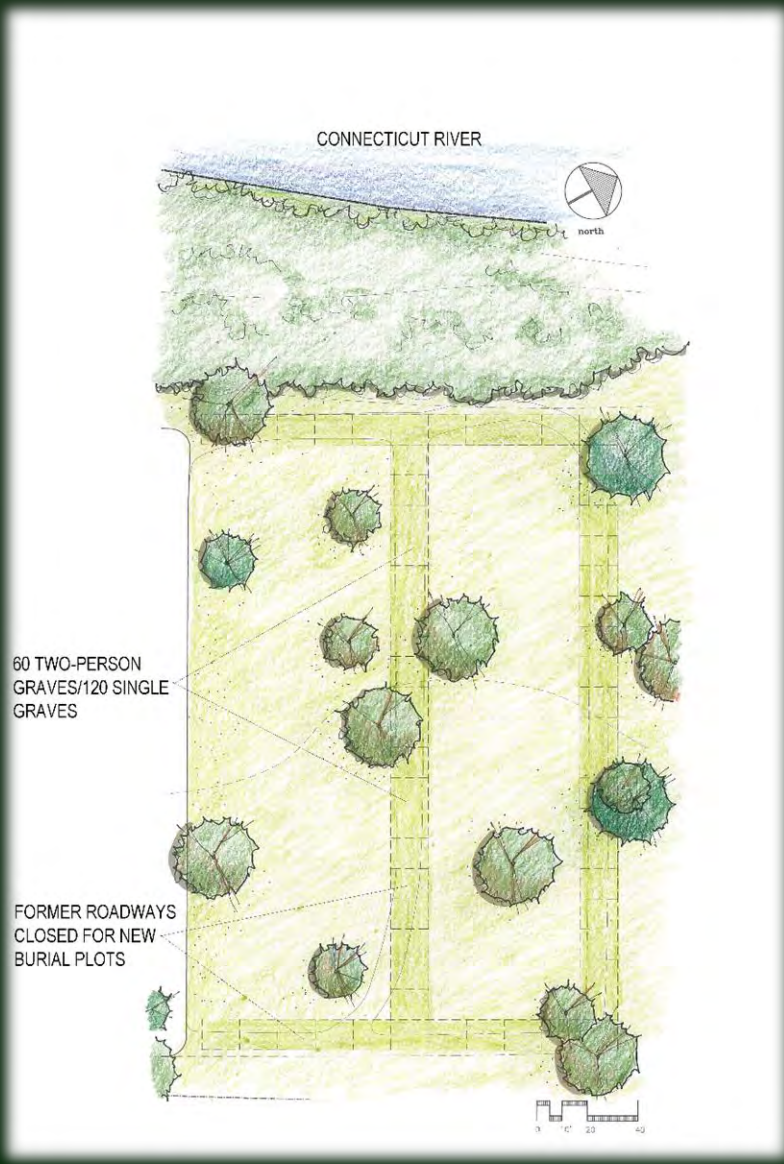


*Unavailable.*



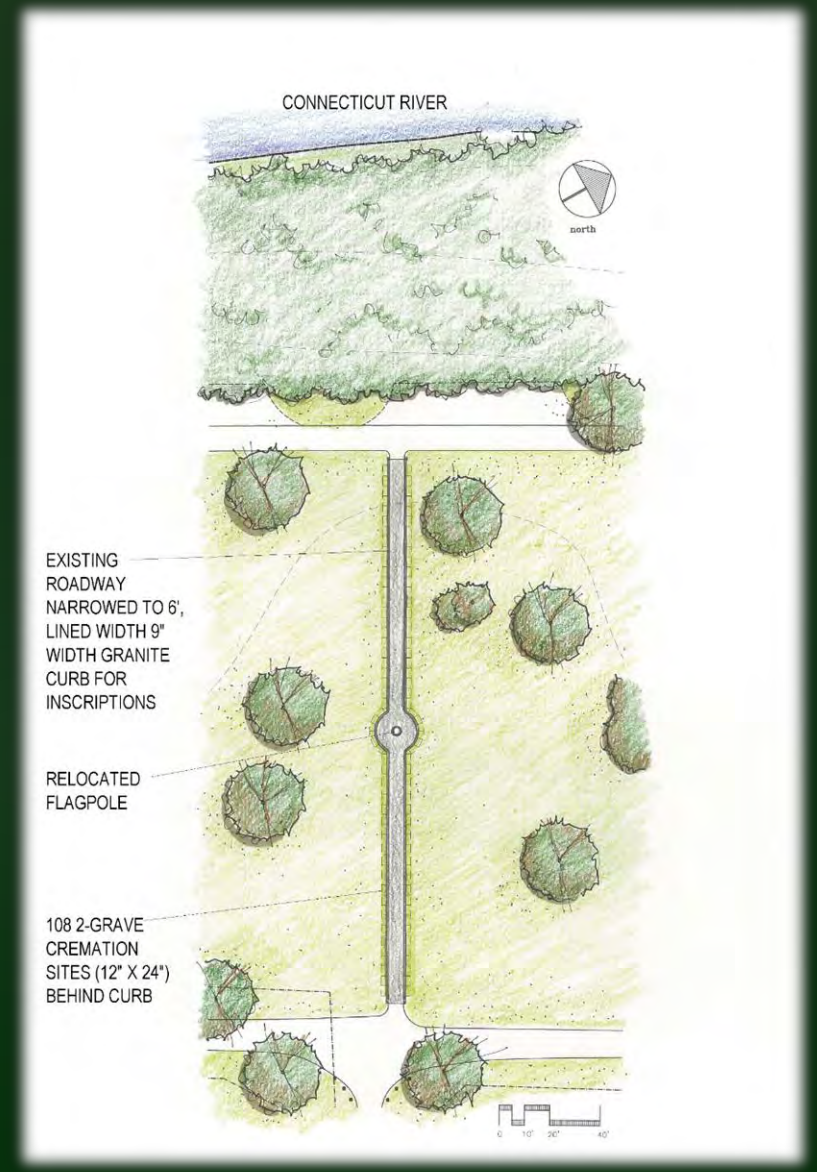






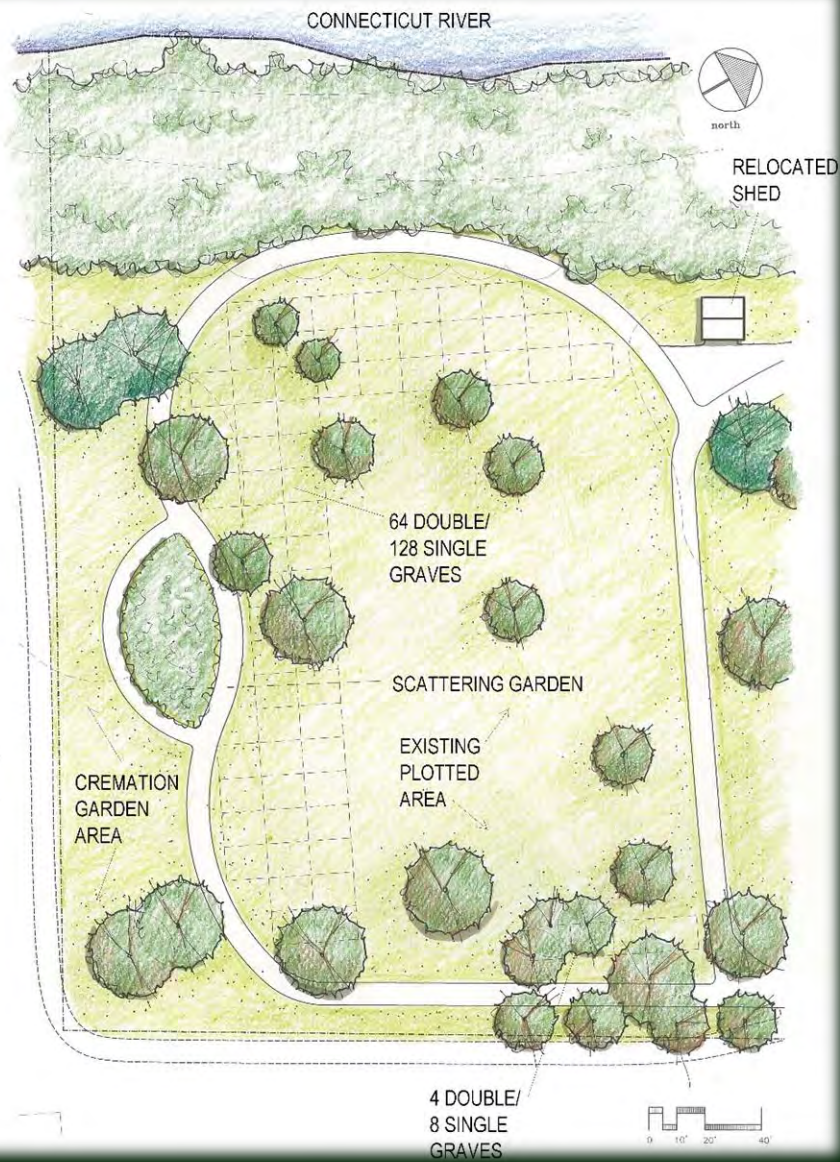
*Reclaiming under-used roads*





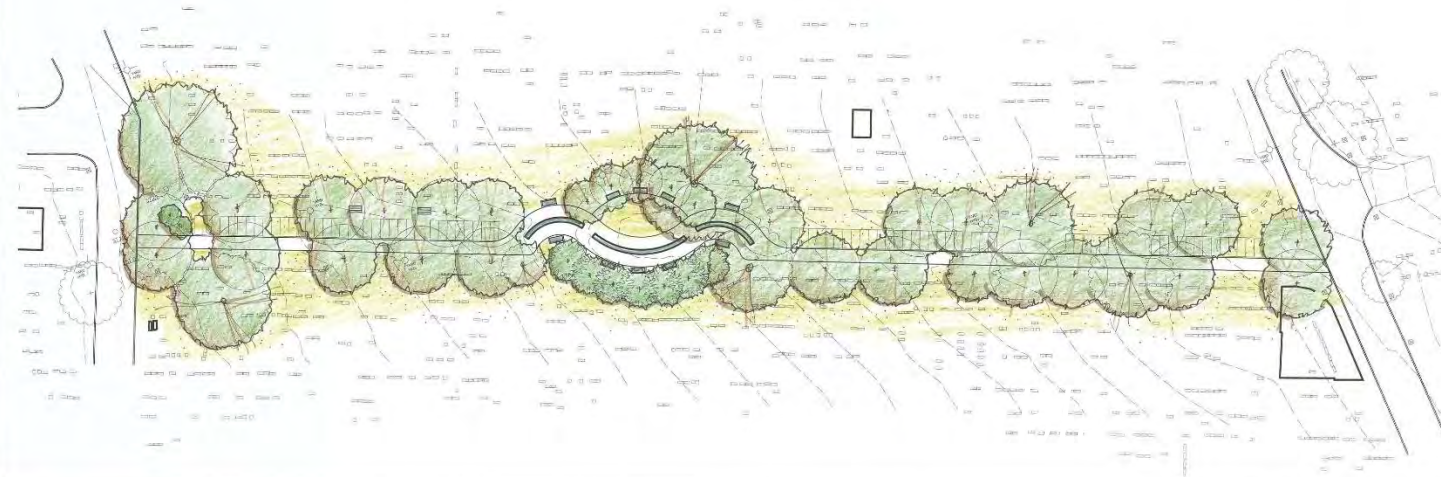
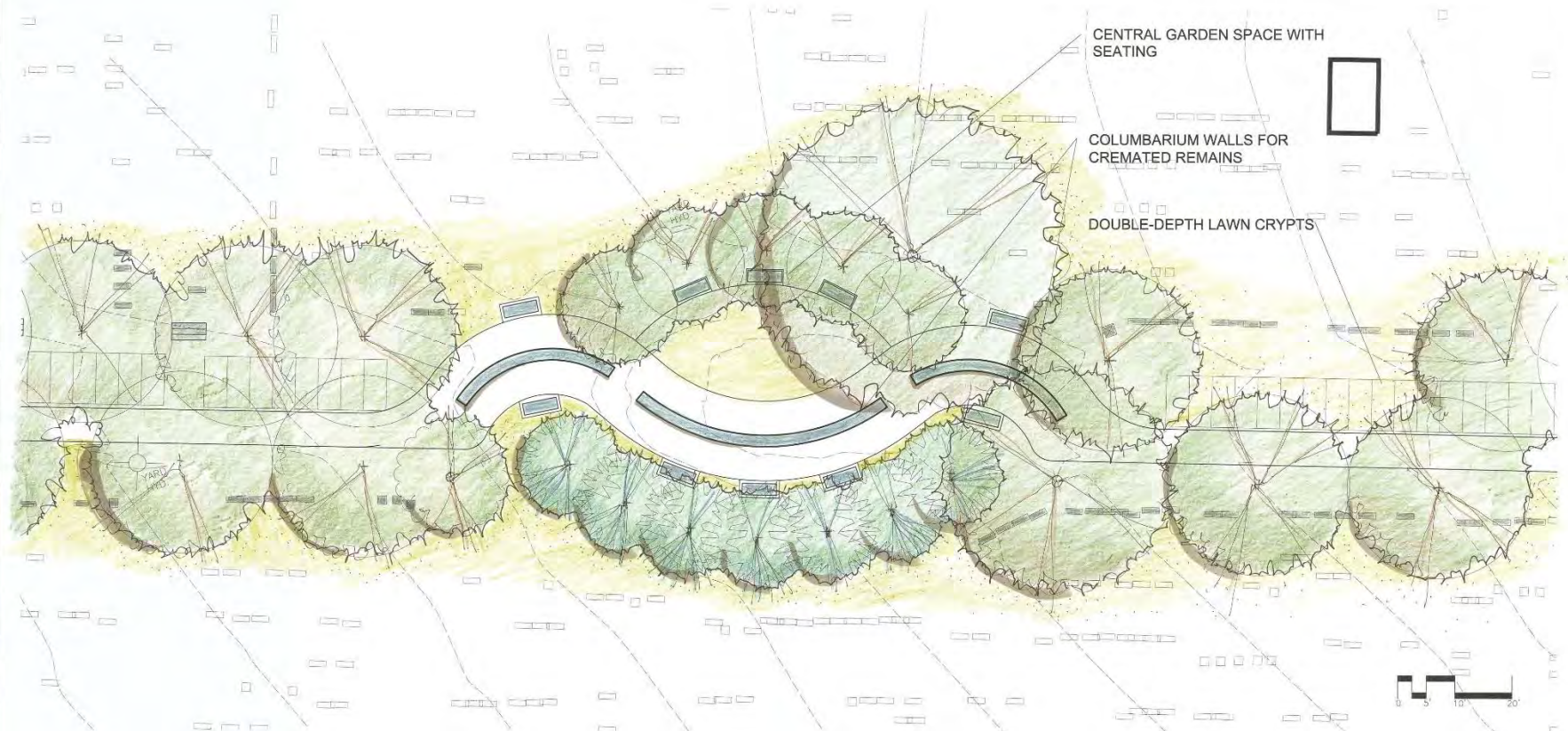
*Reclaiming under-used roads*





*Maximizing underdeveloped land*





#### DESIGN FEATURES:

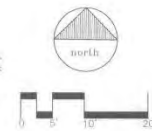
- 6' STRAIGHT WALKWAY WITHIN EXISTING PROFILE OF SECOND AVENUE
- 74 DOUBLE-DEPTH LAWN CRYPTS ON WEST SIDE OF PATH
- 3 SERPENTINE COLUMBARIUM WALLS (2 SHORT, 1 LONG) WITH NICHES ON BOTH SIDES, TOTAL OF 880 12" X 12" CREMATION NICHES
- CENTRAL CLOISTER GARDEN SPACE ORIENTED WEST TOWARDS U of R LIBRARY TOWER







- ELM AVENUE CLOSED ALONG EAST SIDE OF ISLAND REPLACED BY WALKING PATH
- PATH LEADS INTO AND OUT OF GATHERING SPACE
- SEAT WALL ALONG BACK (EAST SIDE) OF GATHERING SPACE
- SCATTERING AMONG TREES, GROUND COVER AND LAWN



SECTION THROUGH GARDEN SPACE (NORTHWEST ORIENTATION)







## *Final Thoughts*

- *Uncover the stories; identify artisans*
- *Preserve as open spaces and homes to flora and fauna*
- *Improve curb appeal*
- *Tell the stories*
- *Implement sustainable approaches*
- *Broaden interment options*



# *Thank You*

*Longmeadow Cemetery Association*

*City of Northampton*

*City of Salem*

*Town of Wilbraham*

*City of Pittsfield*

*Town of Adams*

*Town of Sunderland*

*City of Newport, Rhode Island*

*City of Portsmouth, New Hampshire*

*City of Rochester, New York*



**MARTHA LYON**

LANDSCAPE ARCHITECTURE, LLC

313 Elm Street, Northampton, MA 01060

413-586-4178 • marthalyon.com