



The Association for Gravestone Studies: Learning to Plan for Cemetery Care

Dennis Montagna

Historian, National Park Service
Northeast Region Office—Philadelphia

President, Association for Gravestone Studies

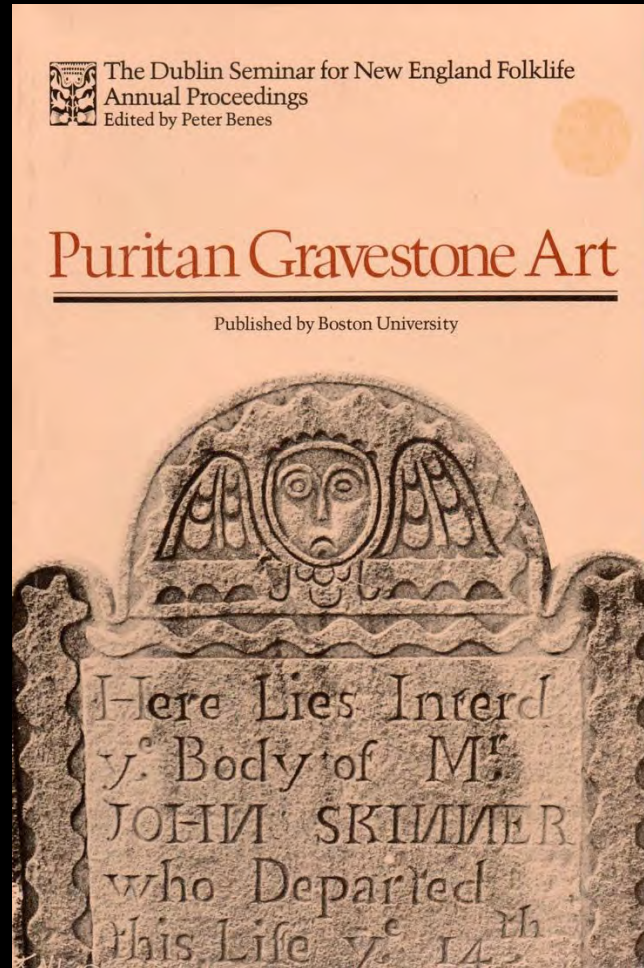


1977

“to further the study and
preservation of gravestones”

The Dublin Seminar for New England Folklife

Dublin, New Hampshire

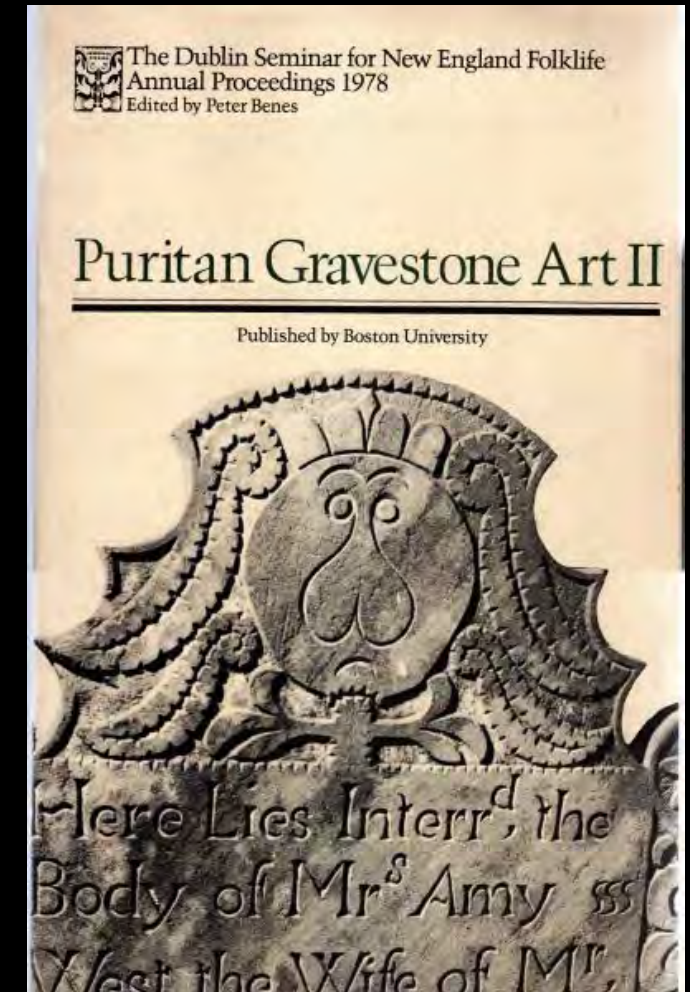


1976



1977

“to further the study and preservation of gravestones”



1978

1979/80 EDITION • THE ANNUAL JOURNAL OF
 **MARKERS**
THE ASSOCIATION FOR GRAVESTONE STUDIES



MARKERS XXXVIII



edited by
Elisabeth L. Roark

AGS QUARTERLY

BULLETIN OF THE ASSOCIATION FOR GRAVESTONE STUDIES

*Special issue devoted to
markers for children*



WINTER 2012

VOLUME 36 NUMBER 4

AGS QUARTERLY

BULLETIN OF THE ASSOCIATION FOR GRAVESTONE STUDIES

Our Fourth Annual Theme Issue
MAUSOLEUMS



WINTER 2015

VOLUME 39 NUMBER 4

AGS Annual Conferences



Westfield State University, MA [2015]

AGS Conference 2023—Denver, Colorado



Cemetery Preservation Workshops

Classroom Sessions [half day]

- A Cemetery's Many Moving Parts
- Planning Long-term Cemetery Care
 - Mapping
 - Survey and Condition Assessment
 - Implementation



On Site Training [full day]

- Personal and Cemetery Safety
- Hands-on Treatment



AGS Cemetery Preservation Workshops for Beginners

Jason Church
Natchitoches, LA



Francis Miller
Hamden, CT



Joe Ferrannini
Hoosick Falls, NY

Laurel Hill Cemetery Assessment



Planning Long-term Cemetery Care

- Mapping
- Survey and Condition Assessment
- Implementation



Laurel Hill Cemetery Assessment

Family lots: 11,000
4% Sample: 440



Laurel Hill Cemetery Monument Survey Form

Family lot/site

Markers

Major monuments

LAUREL HILL CEMETERY MONUMENT SURVEY Date lot sold: _____ Endowed?: \$ _____, no

Overall Lot C-K Section and lot numbers: 1,2,3,4 Family name: HUTCHINSON

Terrain characteristics: level, irregular, gentle sloping, steep sloping Ground covered: 100 %

Drainage problems?: yes no Supported by retaining wall?: yes no Is there a tree within falling distance?: yes no

Curb/fence: intact, loose pieces, broken, missing pieces, traces, no traces/none shifting

Of these, the number of markers in this lot that are:

Total number of markers	Upright	Loose/leaning	Toppled	Missing
<u>14</u>	<u>13</u>	<u>1</u>		

Exposed foundation(s)?: # 1, no Ground erosion at foundation(s)?: # 5, no

Missing piece(s)?: # 1, no Detached piece(s)?: # 0, no Honed face(s)?: # 0, no

Major Monument (six feet or higher)

Key monument name: SAME Stone: granite, marble, sandstone, ~~no~~ Type: obelisk/column, "sarcophagus" monument

Obelisk/column: Height (ft/in): _____ Bottom of spire width (ft/in): 26"

"Sarcophagus" monument: Length (ft/in): _____ Width (ft/in): _____ Height (ft/in): _____

Foundation exposed?: yes no Depth of greatest exposure (ft/in): 2 1/2" Distance to nearest marker (ft/in): 27"

Toppled?: yes no Detached piece(s)?: yes no Missing piece(s)?: yes no

Stable to touch?: yes no Leaning?: yes no If yes, angle 1(greatest): _____° angle 2: _____°

If this monument falls, might it fall outside the lot?: yes no If yes, it will fall into lot number(s): 5, 6, 85, 87

Survey Information

Surveyor(s) initials: LMK CT SD Date: 13 July 99



Unstable and in danger of falling: 29%
Already fallen: 7%



Landscape Deterioration





1926







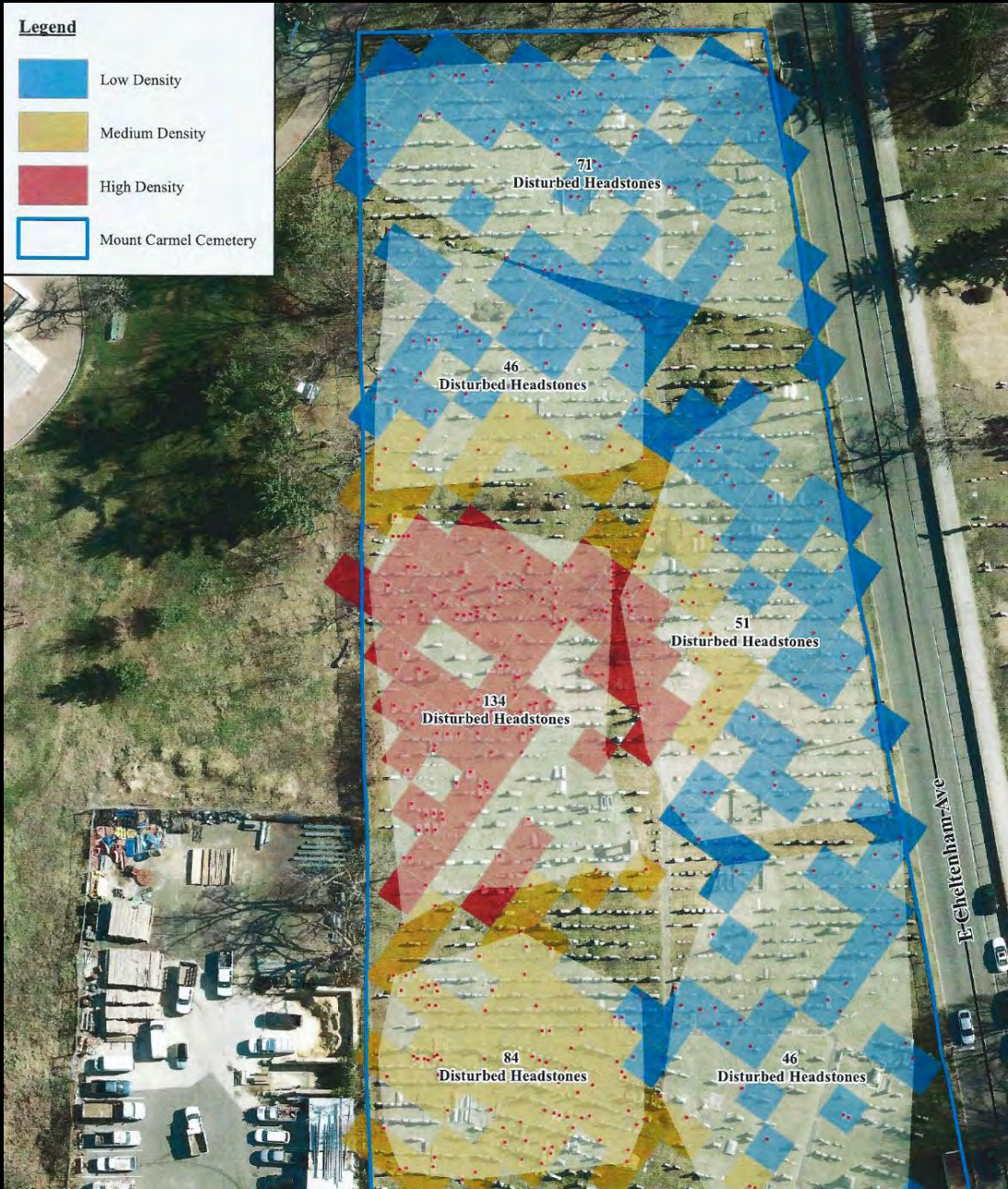
Lincoln Cemetery
Gettysburg, PA

Seeing the Big Picture: Mapping





Mount Carmel Jewish Cemetery
Philadelphia, PA



Planning for Cemetery Care: See the big picture





Rockingham Meeting House Cemetery
Rockingham, VT



Build support for long-term cemetery preservation





drmontagna@gmail.com