

Lynnfield Visioning

Public Forum

November 29, 2023



LYNNFIELD
2040 Shaping our
Future Today

Welcome + Introductions

Lynnfield Planning Board

Brian Charville, Chair

Katherine Flaws, Vice Chair

Edward Champy, III, Clerk

Amy MacNulty

E. Page Wilkins

Lynnfield Town Staff

Emilie Cademartori, Director of Planning & Conservation

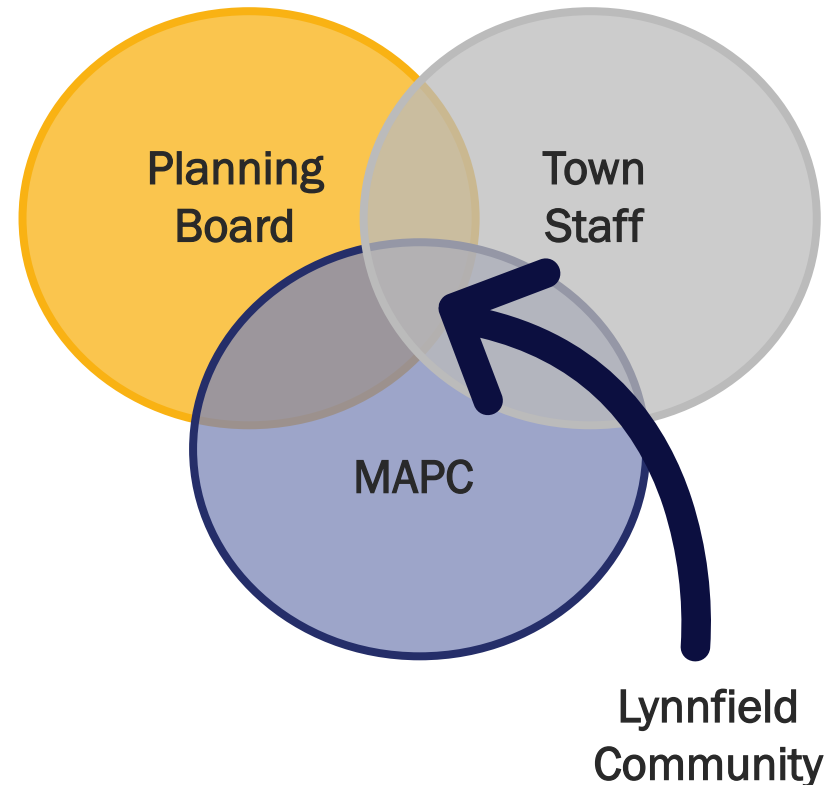
Sondria Berman, Land Use Assistant

Jennifer Welter, Planning Admin

MAPC

Andrea Harris-Long, AICP, Manager of Housing & Neighborhood Development

Sarah Scott, Regional Land Use Planner II



Who's in the room?



Have you
participated in
the Visioning
process yet?



How long have
you lived in
Lynnfield?

Tonight's Agenda

01 Project Context

02 Public Outreach + Feedback

03 Preparing a Vision

Project Context

What's a visioning plan?

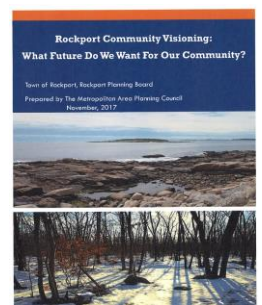
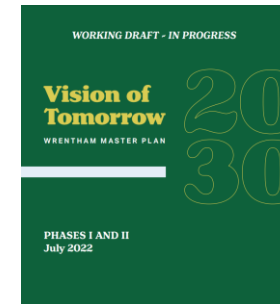
Community-driven process to shape how Lynnfield should look, feel, and operate as a community over the next 10-20 years

Strategic framework for future public decision-making and investments

High-level and aspirational planning document

GOALS

- **Inclusive and transparent** process led by Lynnfield Planning Board
- **User-friendly** final plan
- **Realistic recommendations** that are reflective of community wants and needs



Work To-Date

- ✓ Reviewed **2002 Master Plan** along with recent planning and policy initiatives
- ✓ Conducted **town-wide site visit** with Town staff and Planning Board members
- ✓ Held **1:1 interviews** with dozens of Town departments, boards, and commissions
- ✓ Analyzed spatial and demographic data to produce a **community snapshot**
- ✓ Distributed **community-wide survey** and synthesized results
- ✓ **Publicized project** through numerous community events, newsletters, and media
- ✓ Led discussions with **Lynnfield High School students**

Lynnfield: At a Glance



13,000 people



86% white



5,934 jobs



\$147,237 median income



4,536 households


4,773 housing units

92% single-family houses

Growth and Change, 2010-2020

 **13%**
Population

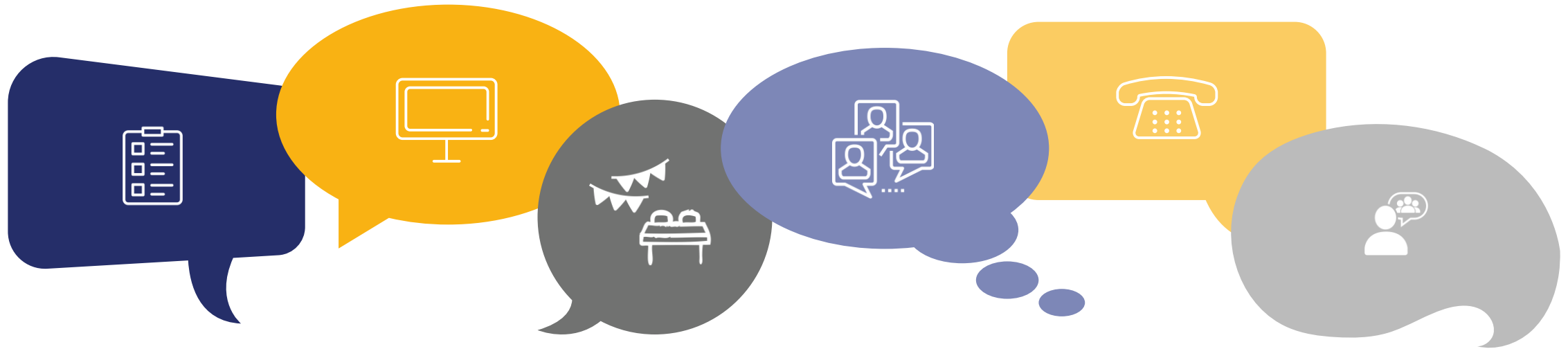
 **11%**
Households

 **5%**
**School
Enrollment**

 **79%**
**Median Housing
Price**

Public Outreach + Feedback

Engagement Opportunities



Town-Wide Survey

Available to entire
Lynnfield community

Tabling Events

Sharing information
about project

Lynnfield High School

Activity with 10th grade
social studies classes

Town Staff Interviews

1:1 conversations with
key town staff

Community Conversations

Interviews with engaged
community members

Town-Wide Survey

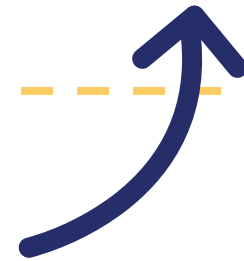


Questions covered topics commonly addressed in a comprehensive plan:

- Housing
- Jobs
- Transportation
- Land use
- Open space and natural resources
- Recreation
- Town governance
- Sense of belonging

- Available online and in paper form
- Open from mid-April to mid-June
- Accessed by 855 people

Compared to
550 people at
2023 Town Meeting



Town-Wide Survey Highlights



Importance of **effective municipal government**

Openness to **economic development** and job growth

Different perspectives among seniors and new residents

Fear of **housing instability**

Value of **open space** and natural resources

Concern about **property tax increases**

Visions

“Town leadership in which all voices are heard and people are treated with respect.”

“There are excellent public schools and most kids safely walk or bike to school. People of every generation enjoy music at Town Center at summer concerts and see their neighbors at block parties. Lynnfield Center has a new cafe and restaurant.”

“I would like to see the Town retain its character. Neighboring towns...have become so overcrowded and congested with traffic that I breath a sigh of relief when I get back home after driving through them.”

Town Staff Interviews



Priorities

- Public safety
- Maintaining public facilities
- Responding to residents' needs for services and amenities
- Providing opportunities for recreation and education
- Supporting schools
- Preserving historic buildings and open space

Challenges

- Shifting governance models
- Adequate staffing and funding
- Competing community values
- Aging public facilities and infrastructure, including water

Opportunities

- Reenergized leadership throughout Town staff, elected officials, and community volunteers
- Deep commitment to Lynnfield
- Improved collaboration and communication
- Diversity of experiences and perspectives

Tabling Events



“What do you hope for Lynnfield's future?”

business-friendly
destination **healthy** inclusive
equitable **sustainable** bikeable
active walkable water
fiscally-responsible dog-friendly
rooted **natural**
prosperous **welcoming** charming
affordable **accessible**
community-oriented

- Lynnfield Art Guild's Spring Arts Festival
- Friends of the Library Book Sale
- Lynnfield for Love Coffee Event
- Healthy Living Expo
- Lynnfield Pride

Community Conversations



Community stakeholders identified by Town staff and Planning Board members

Sample questions:

- What are your current priorities?
- What challenges do you have when trying to achieve your priorities?
- What opportunities do you see for Lynnfield over the next 20 years?
- Are there any special projects you have that are ongoing or beginning in the future?
- What community members or groups should we engage in this planning process?

- Cultural Council
- Council on Aging
- Finance Committee
- Lynnfield School District
- Lynnfield Tree Committee
- Lynnfield Art Guild
- A Healthy Lynnfield
- Lynnfield for Love

Lynnfield High School

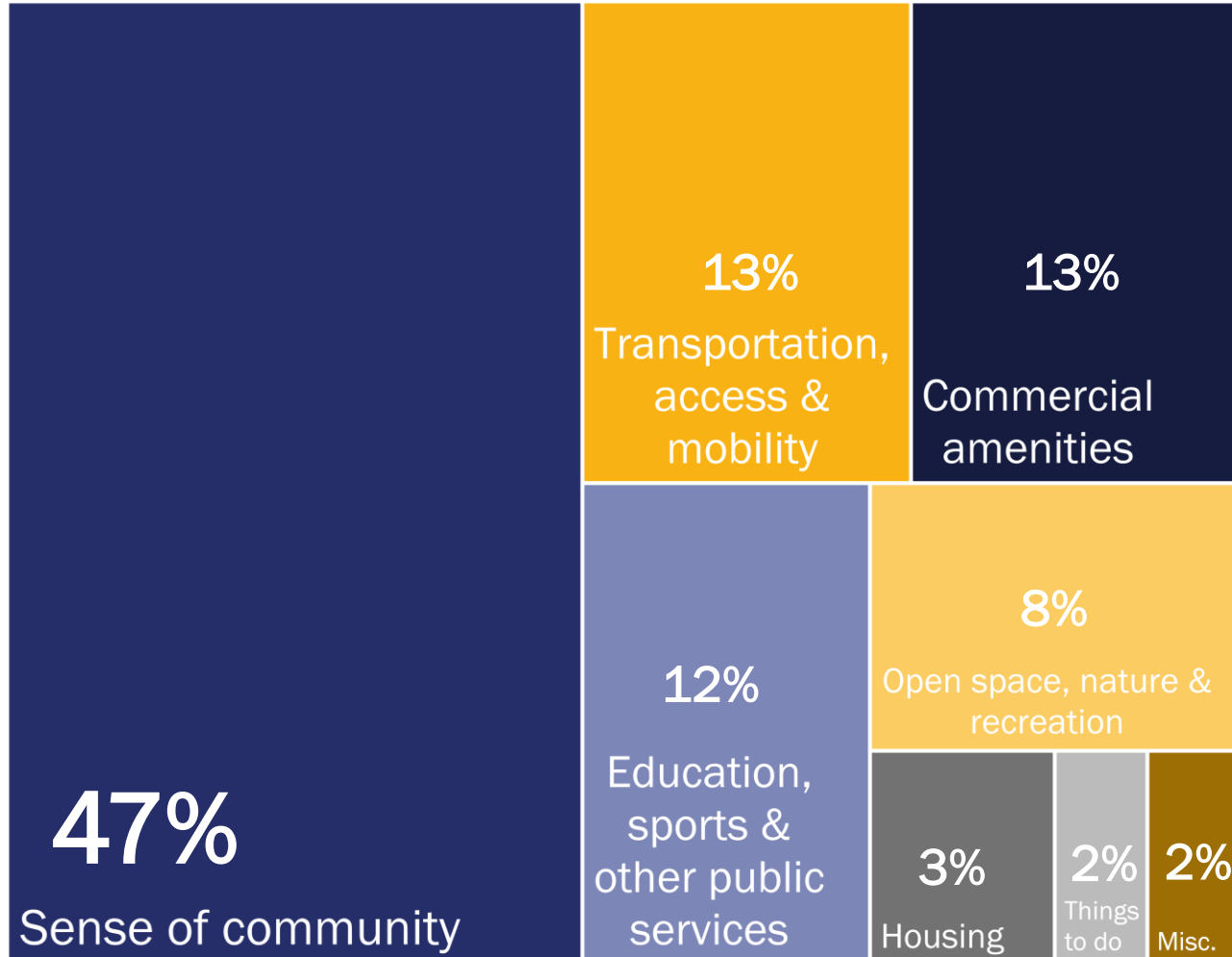


Engagement activities mirrored survey questions:

- What's one thing you love about Lynnfield?
- What's one thing you'd change about Lynnfield?
- What community features are important to you?
- How well is Lynnfield doing with those community features?
- What are Lynnfield's greatest challenges?

- Attended four 10th grade social studies classes in September
- Approximately 50 students total

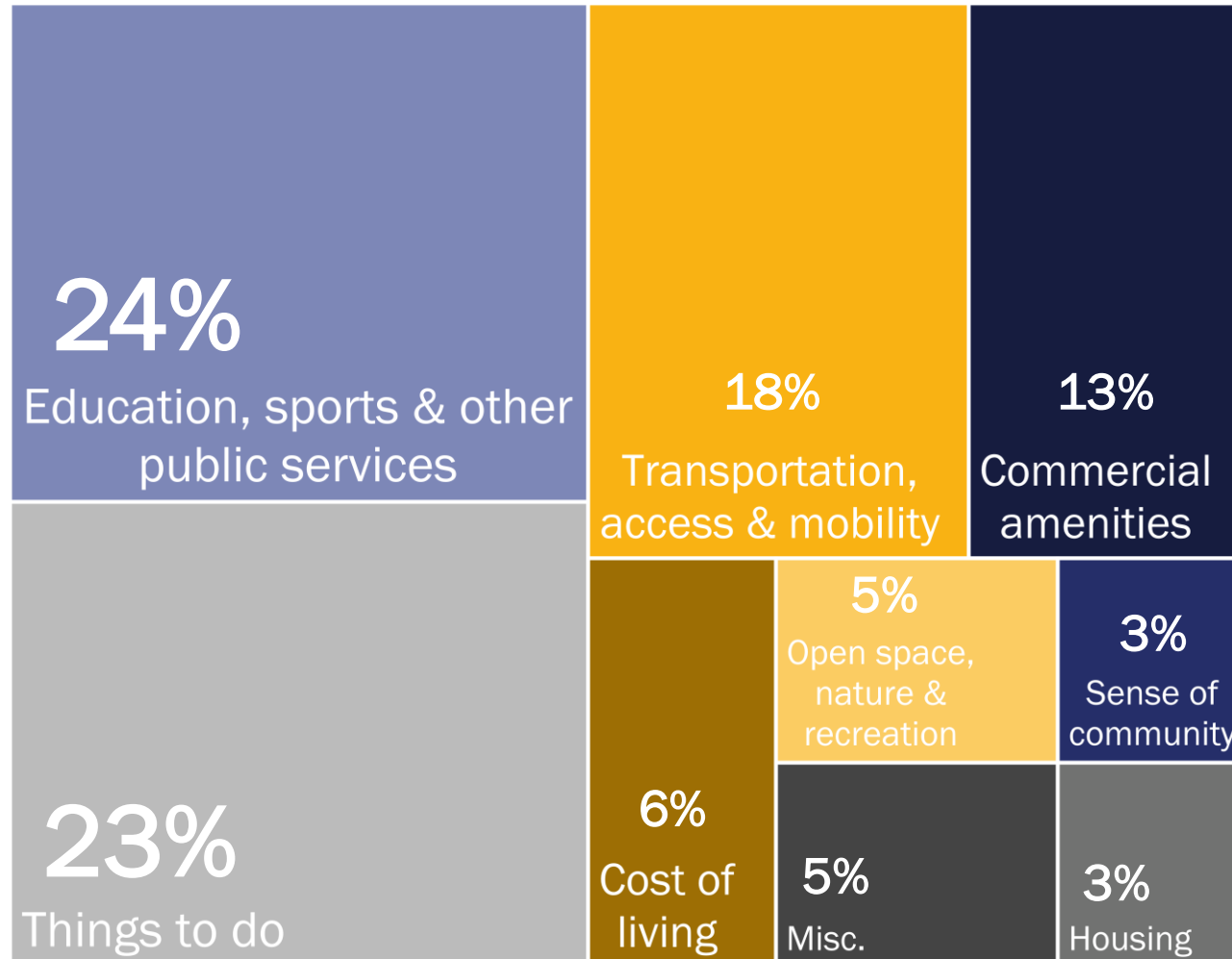
Things Youth Love About Lynnfield



“I love how Lynnfield has many opportunities for people to be included in the community. I also love Market Street.”

“Everyone and everything is in close proximity.”

Things Youth Would Change About Lynnfield



“We need more community spaces in general.”

“I would add more fun things because it is kind of boring sometimes.”

“I would change how affordable the houses are so the town can be more diverse.”

Preparing a Vision

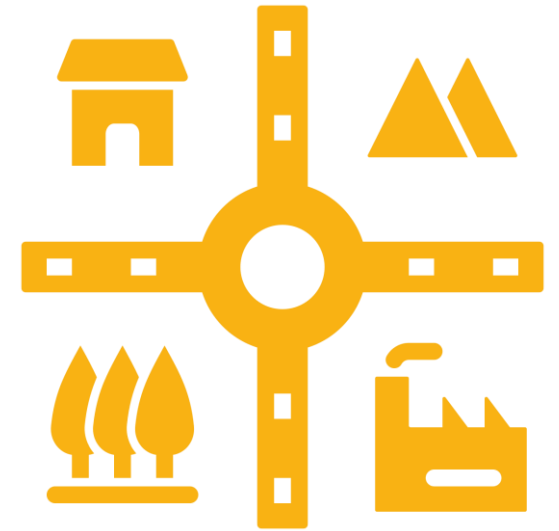
Community Goals



**Sense of
Belonging**



**Transparent &
Well-Run Town
Government**



**Balanced
Community Growth**

Community Goals



**Sense of
Belonging**

Safe ways to recreate and see neighbors, both young and old

Revitalized town center with a variety of businesses and community gathering spots

Public amenities that serve diverse users (e.g., school, library, arts)

Community Goals



**Transparent and
Well-Run Town
Government**

**Timely infrastructure
improvements** (e.g., rail trail,
sidewalk repairs)

Communicative leadership,
including elected officials and
Town staff

**Stable finances and low property
taxes**

Community Goals



**Balanced
Community
Growth**

Land use decisions that align with environmental goals (e.g., water quality, water supply, tree protection)

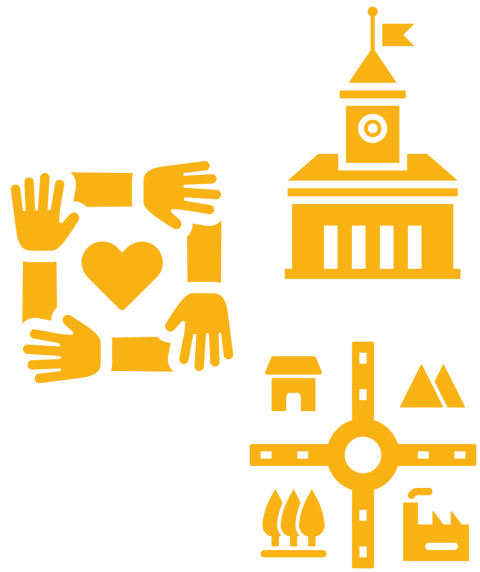
Diverse housing supply that supports residents' needs at all phases of life

Commercial uses that support tax base without changing residential character of town

Guiding Principles

1. Fiscal responsibility
2. Sustainability
3. Healthy & Active
4. Inclusive, Accessible, & Equitable
5. Transparency
6. Collaboration

Process for Defining a Vision



Community Goals



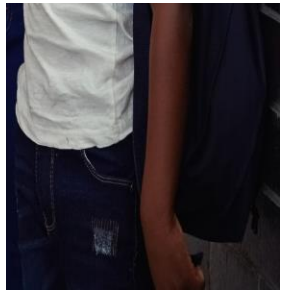
Guiding Principles



Lynnfield Vision

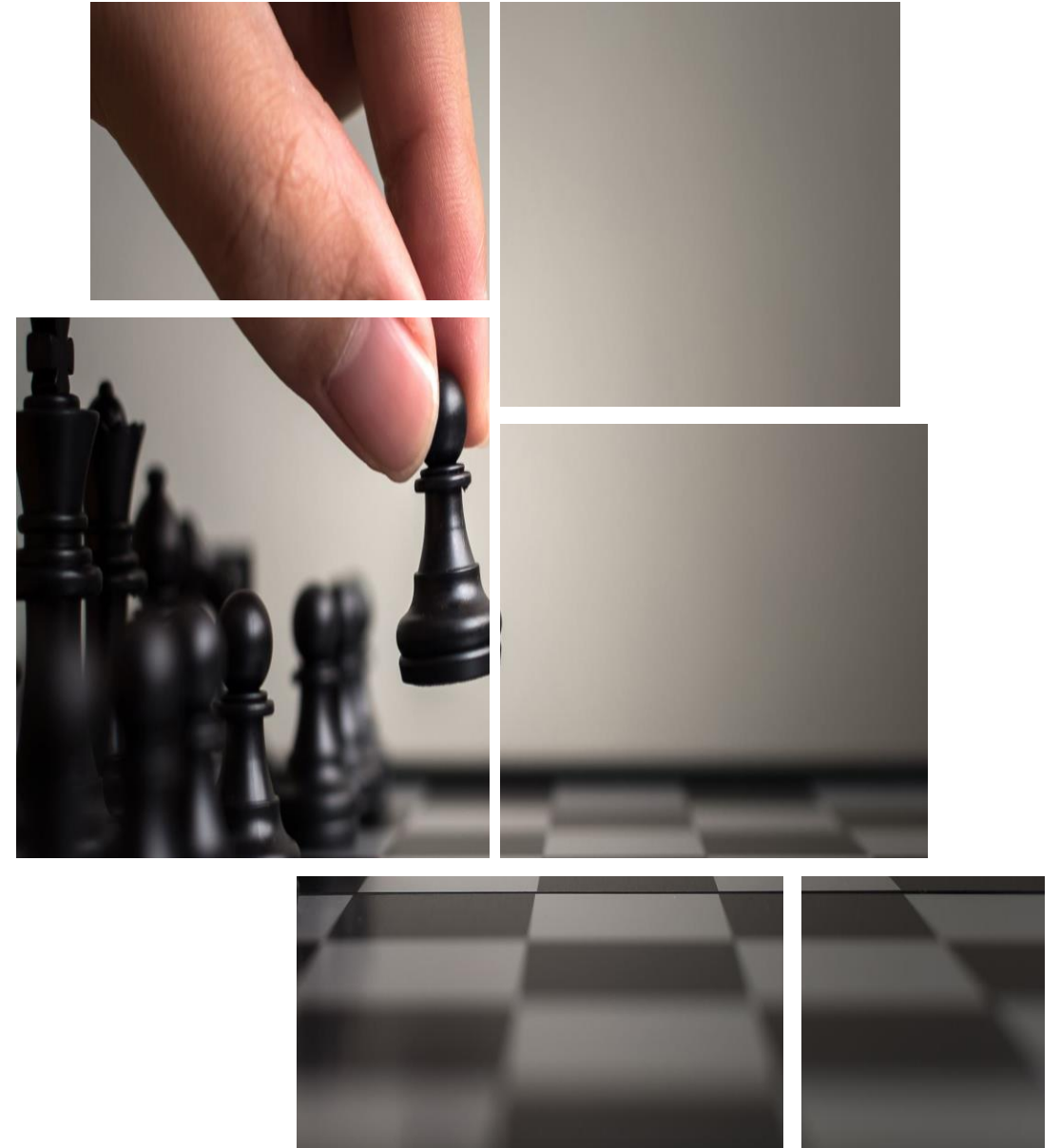
Activity

**What will Lynnfield
look like in 2035
and beyond?**



Activity

**What should guide
Town decisions?**



Next Steps

How to Stay Involved

- Attend a Planning Board meeting
- Participate in the online open house
- Talk with members of the project team

November December January



◆ Planning Board Meetings

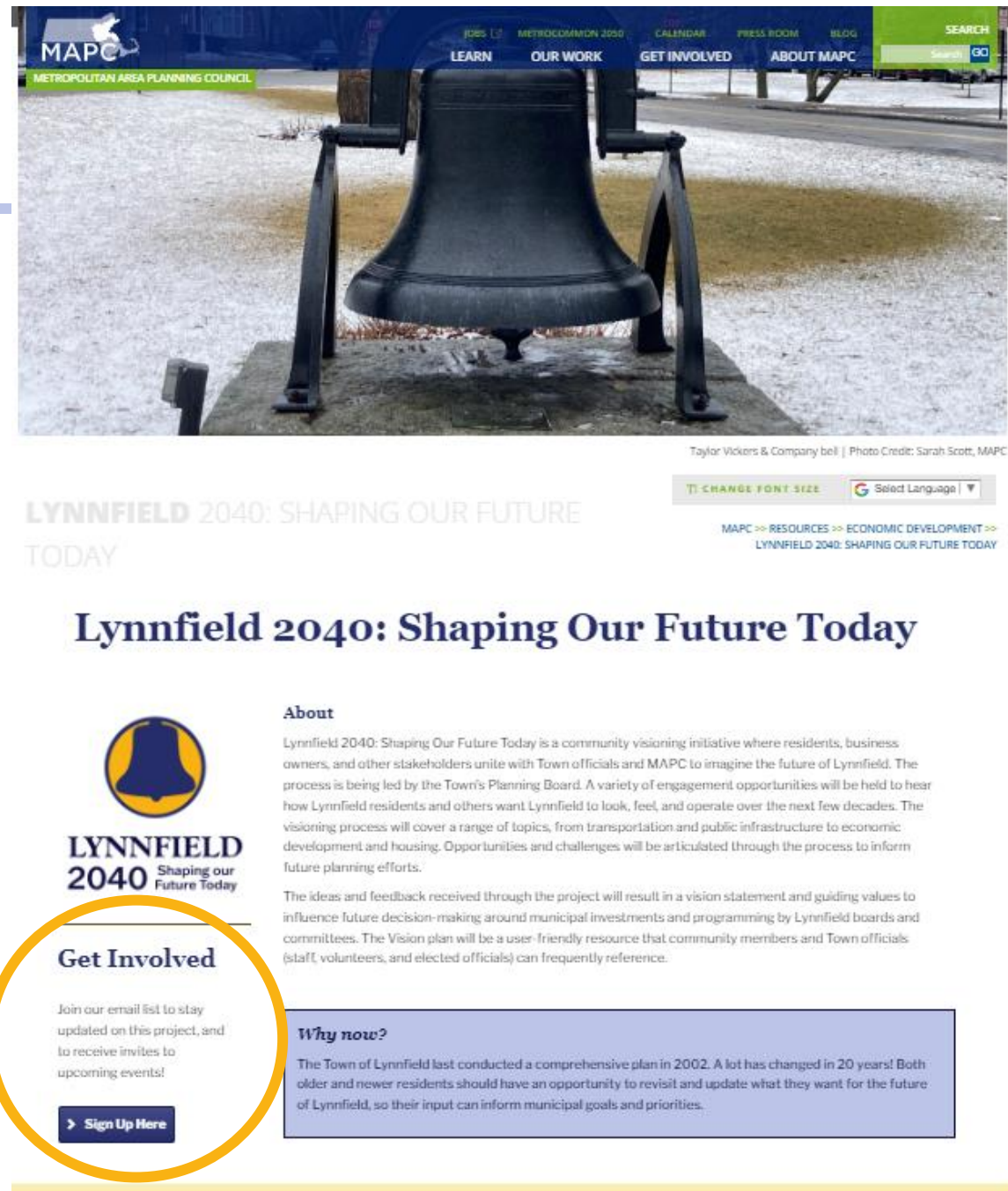
◆ Community Events

Project Webpage

mapc.ma/LynnfieldVision

- Upcoming events
- Recaps of past meetings
- Survey results and other project materials

Sign up for project updates!



Questions?

Thank you!

Andrea Harris-Long, AICP
Manager of Housing &
Neighborhood Development
aharris-long@mapc.org

Sarah Scott
Regional Land Use Planner II
sscott@mapc.org



LYNNFIELD
2040 Shaping our
Future Today