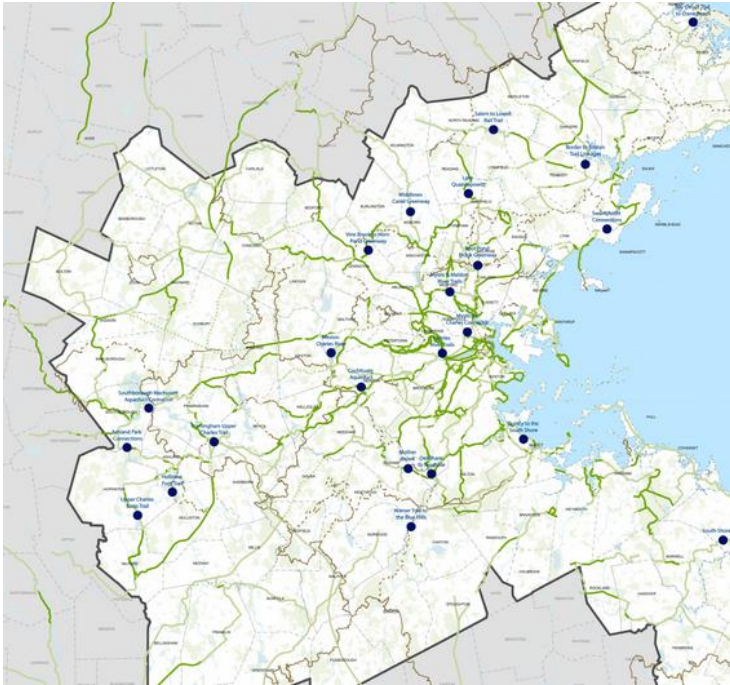


Emergency Preparedness Practice at MAPC

Jan 18, 2024

Kickstarter



- Have you had a role in preparing for an emergency?
- Have you had a role in responding to an emergency?

Through your thoughts in the Chat...

Problem



Munis have emergency plans but don't regularly test or update them



Their local emergency leads have day jobs



May have considered threats and hazards, but have not drilled on how to respond to impacts



COVID forced munis to scramble, but they have learned a lot of lessons they can use in preparing for future emergencies

Assistance



- Various types of emergency preparedness plans, including emergency management and response, shelter plans, evacuation plans
- Emergency management plan gap analysis and review facilitation
- Preparedness trainings and exercises to include tabletops and drills
- Response evaluation and after-action report

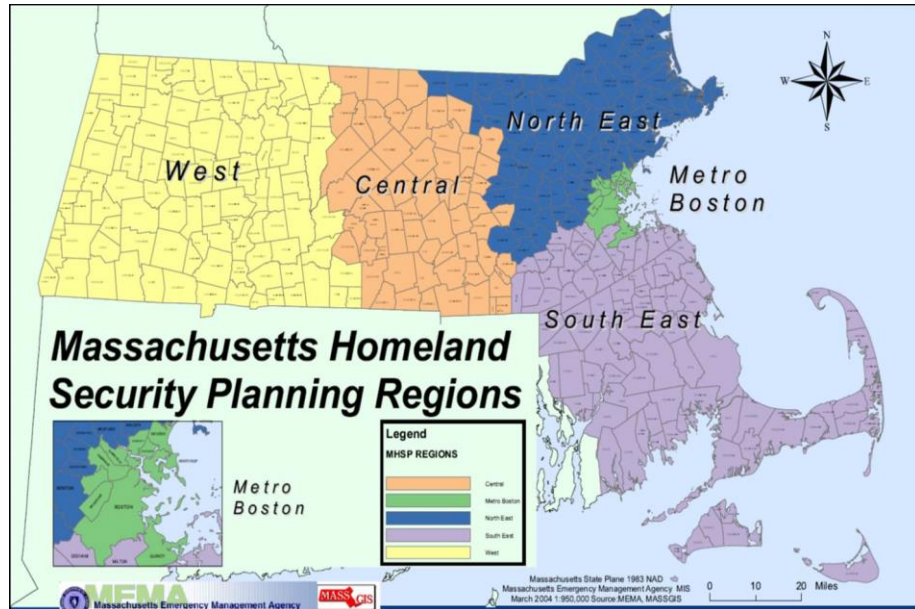
- Continuity of operations planning for municipalities and partner organizations
- Hazard vulnerability assessments
- Community disaster resilience planning and support (i.e., building on community assets to enable a community to withstand, adapt to and recover from adverse events)

Anything other types of assistance come to mind?

Strengths



Smart Growth & Regional Collaboration



Our Recent Work:



Beth Robert,
Emergency Preparedness
Manager
erobert@mapc.org



Dan Witts,
Emergency Preparedness
Specialist
dwitts@mapc.org



Jenifer Wallitsch
Emergency Preparedness
Coordinator
jwallitsch@mapc.org

Are there areas of your work where these skills could be helpful?

Recent projects we've worked on include:

- Created a Migrant Arrival Emergency Best Practice Guide for Municipalities
- Developed a Mass Care and Shelter Coordination Plan for municipal partners
- Developed an Evacuation Plan for a multi-building housing authority
- Developed regional COVID-19 vaccination partnerships
- Coordinated emergency notification system drills and producing after-action reports and improvement plans
- Wrote hazard and vulnerability assessments for health and medical stakeholders
- Developing a comprehensive emergency management plan for a municipal partner