

Climate Justice

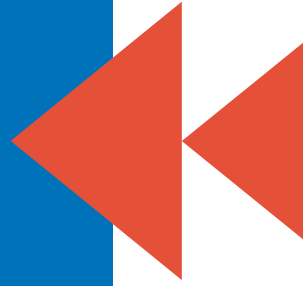
A C3 CLIMATE READINESS TRAINING MODULE



Cambridge
Public Health
Department



- Name
- How long have you been with C3?
- What do you think of when you think about extreme weather or climate change?



ICEBREAKER



Activity: What's the Story?

Each group will have a note taker and a file with around 5 pieces of evidence. Each person gets one piece of evidence, go around the circle and describe:


1. What do you see in this image/article?

As a group, discuss the file:

1. What does it say about the environment?
2. What does it say about equity?




Agenda

- 
- **Telling the story of Environmental Justice in Cambridge**
 - Climate Change 101
 - Break!
 - Climate Change in Cambridge
 - Climate Justice
 - Debrief & Closing



Agenda

- Telling the story of Environmental Justice in Cambridge
 - **Climate Change 101**
 - BREAK!
 - Climate Change in Cambridge
 - Climate Justice
 - Debrief & Closing
- 

WEATHER

VS

CLIMATE

Short term state of the atmosphere

Wed 17	61°/37°	☁
Thu 18	67°/45°	☀
Fri 19	71°/51°	☀☁
Sat 20	66°/59°	☁🌧

Can change within minutes or hours

Long term pattern of weather





The Concept of “Climate Change”

- Global warming vs climate change
- The luxury of concern
- It's political

Causes of Climate Change



Scientists agree that the burning of oil, coal, and gas for energy releases gases that trap heat, making the Earth warmer.

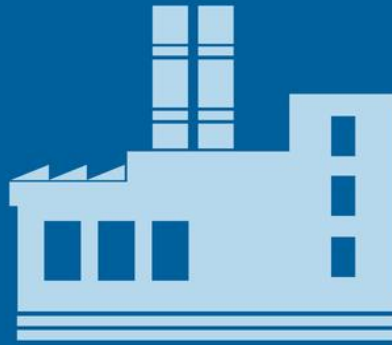
Sources include:



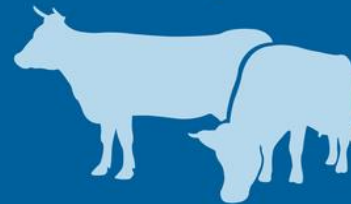
Transportation



Electricity Generation



Industry



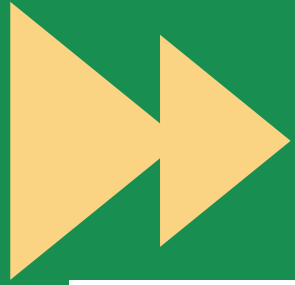
Agriculture



Commercial

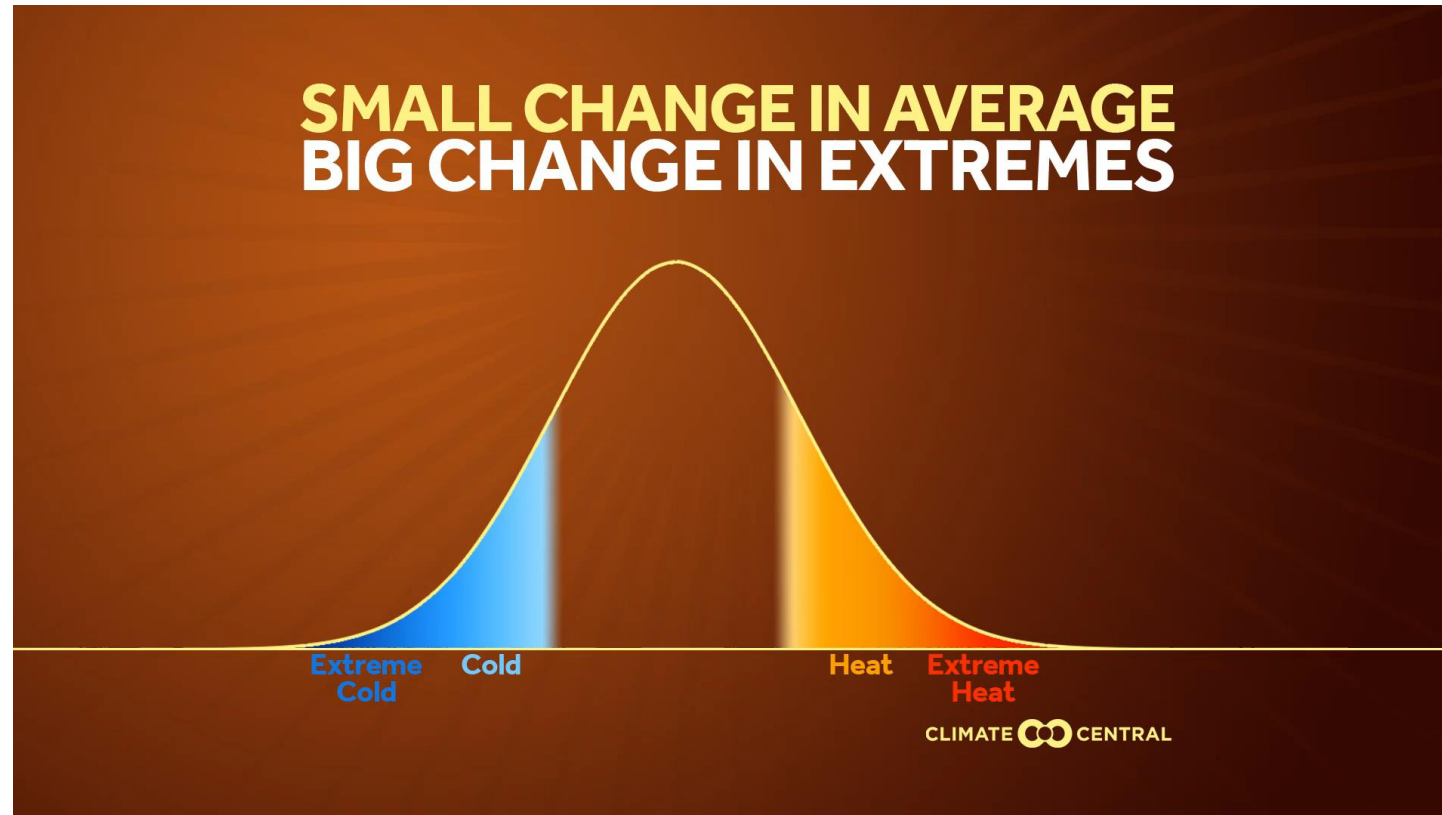


Residential



Effects of Climate Change

A warming Earth disturbs the long-standing climate patterns, resulting in **WARMER**, **WETTER**, and **WEIRDER** weather



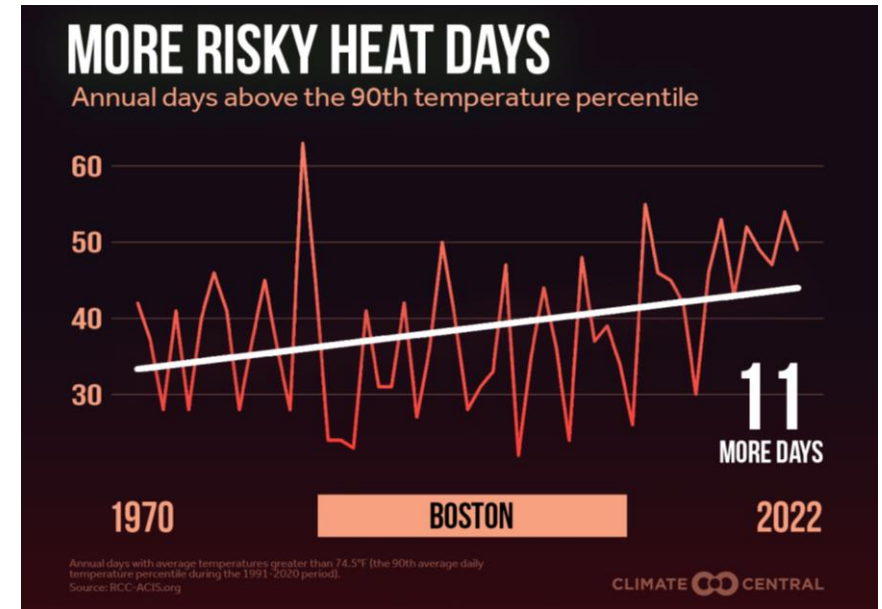
Effects of Climate Change: **WARMER**

Compared to **historic trends**, Metro Boston is experiencing:

- 1.3°F warmer summers
- 2.3°F warmer winters
- 11 more “risky heat days” per year

The future holds:

- More frequent, severe, and longer-lasting heat waves



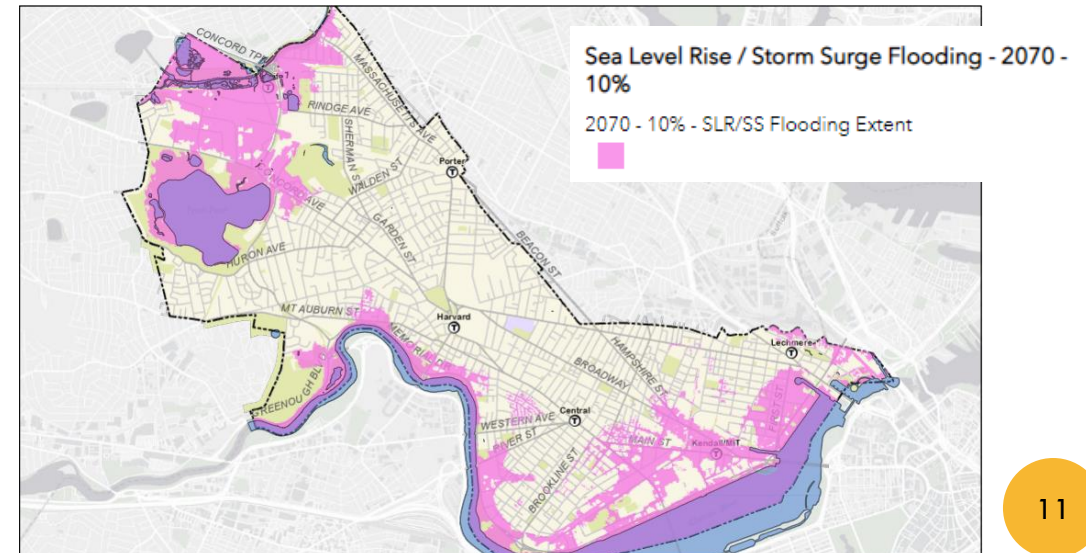
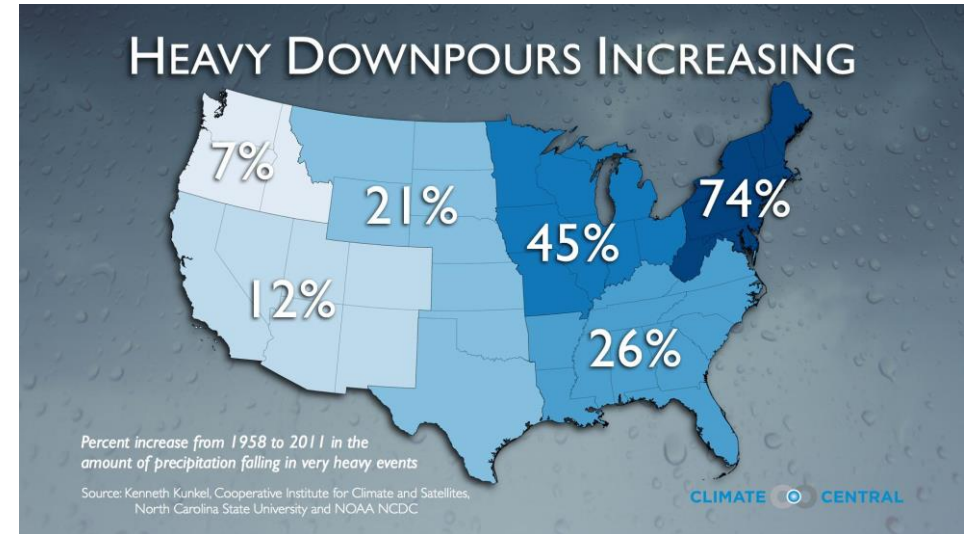
Effects of Climate Change: **WETTER**

Compared to **historic trends**, Metro Boston is experiencing:

- More frequent/severe precipitation events (74% increase)
- Sea level rise (10in increase since 1921)

What the future holds:

- More frequent/severe heavy precipitation events, overwhelmed stormwater infrastructure
- ~8 inches of sea-level rise by 2030



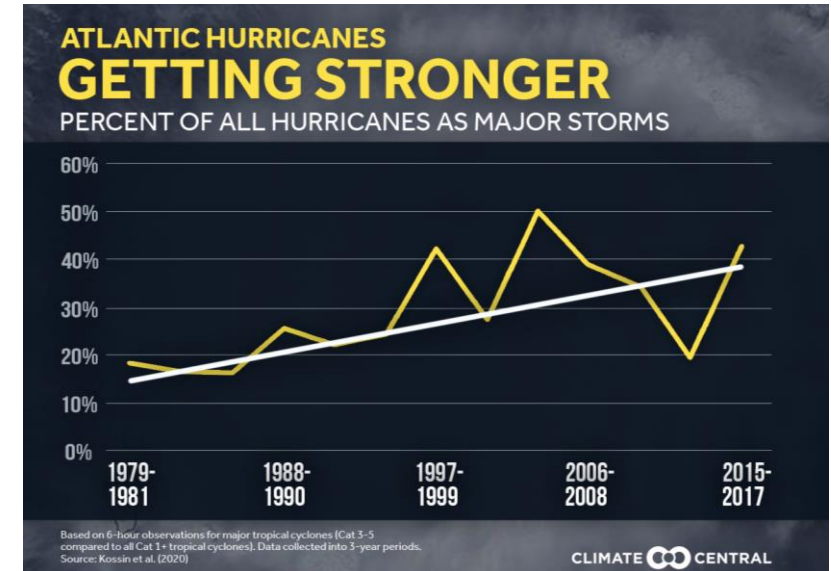
Effects of Climate Change: **WEIRDER**

Compared to **historic trends**, Metro Boston is experiencing:

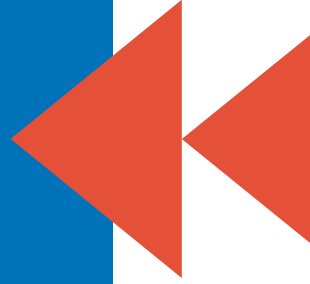
- More flash floods
- Stronger storms, wind-storms
- More deep freezes

What the future holds:

- ???



How have you seen Cambridge
(or your hometown) getting
WARMER, **WETTER**, and
WEIRDER weather?



DISCUSSION

Impacts of Climate Change: **WARMER**



- **Health**
 - Heat related illnesses, more mosquitos & ticks, longer allergy season, mental health impacts, worse air pollution
- **Damage to infrastructure**
 - Damaged roads/buildings, train derailments
- **More need for AC**
 - Higher energy bills, increased risk of power outage
- **Drought**
 - Water shortage, crop damage, financial damages

Impacts of Climate Change: **WETTER**



- **Health**

- Injury/death from flood-related accidents, more mold, outbreaks of water-borne diseases, mental health impacts

- **Damage to infrastructure**

- Road closures, flooded buildings/train stations, etc.
- Homes: basement flooding (chronic moisture), potential septic backflow

- **Disruption to essential services**

- Constrained utility, medical services, emergency response

- **Economy**

- Property damage to local businesses, supply chain interruptions

Impacts of Climate Change: **WEIRDER**

From Frigid to 50s: Record-Breaking Arctic Outbreak By the Numbers

Saturday's -36-degree wind chill ties the record for second-coldest wind chill in Boston's history

By Tevin Wooten • Published February 6, 2023 • Updated on February 7, 2023



WINTER STORM 2021

Photos: Texans face an ice storm that's left millions of people without power



California risk shifts from drought to floods after record rain, snow

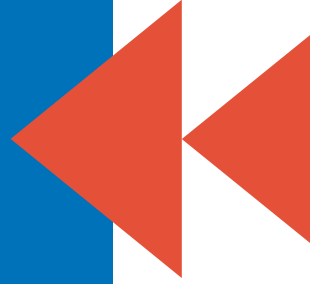




We're all in the same storm, but we don't have the same boats.

Which climate impacts are you most concerned about?


Which groups of people might experience this impact **first and worst?**



DISCUSSION



Agenda

- Telling the story of Environmental Justice in Cambridge
 - Climate Change 101
 - **BREAK!**
 - Climate Change in Cambridge
 - Climate Justice
 - Debrief & Closing
- 

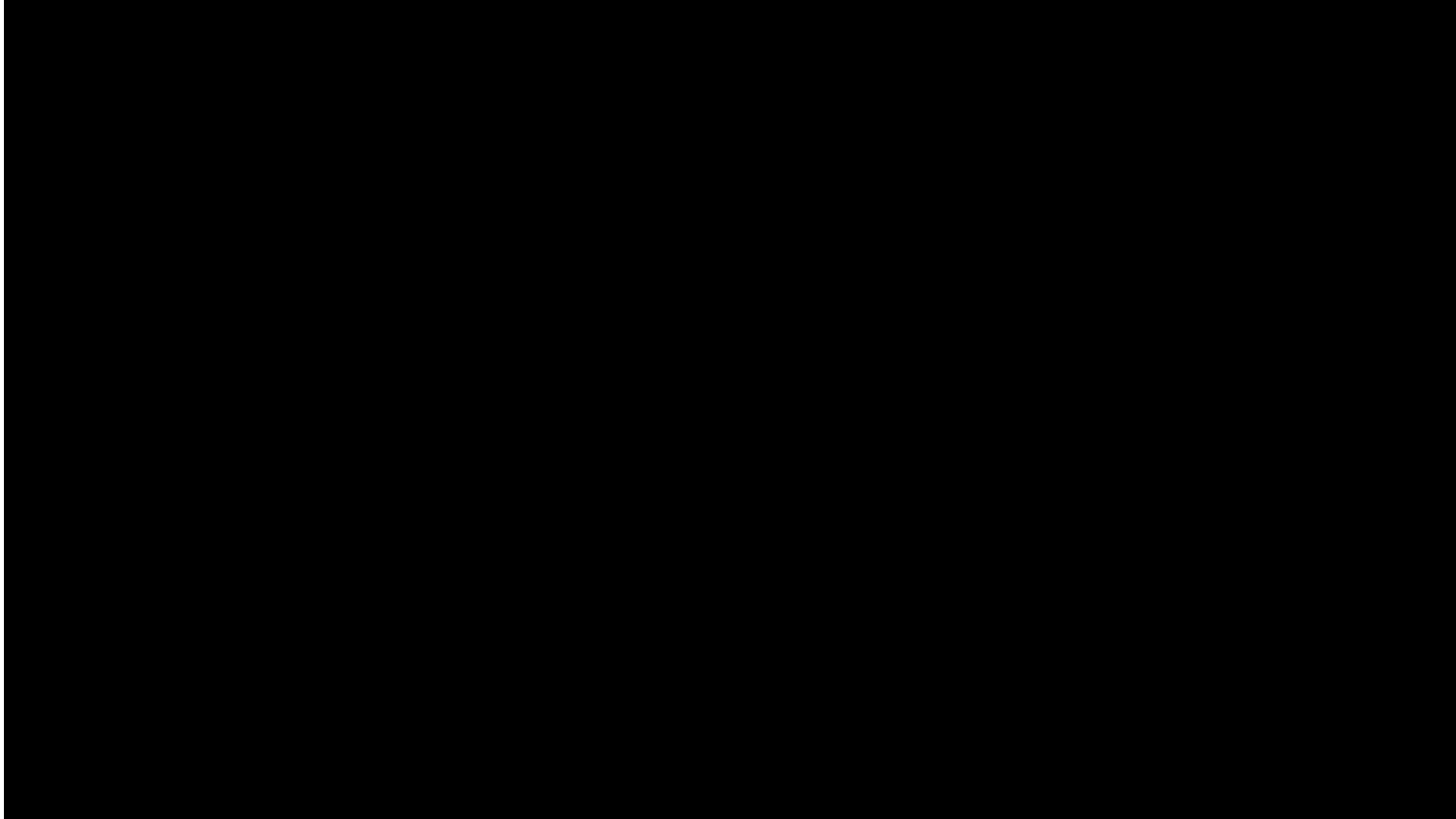


Agenda

- Telling the story of Environmental Justice in Cambridge
- Climate Change 101
- BREAK!
- **Climate Change in Cambridge**
- Climate Justice
- Debrief & Closing



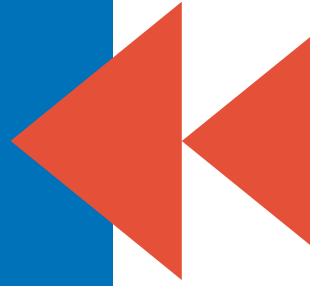
Climate Change in Cambridge



Did you relate to the concerns and/or experiences of anyone in the video?

How did thinking about these events make you feel?

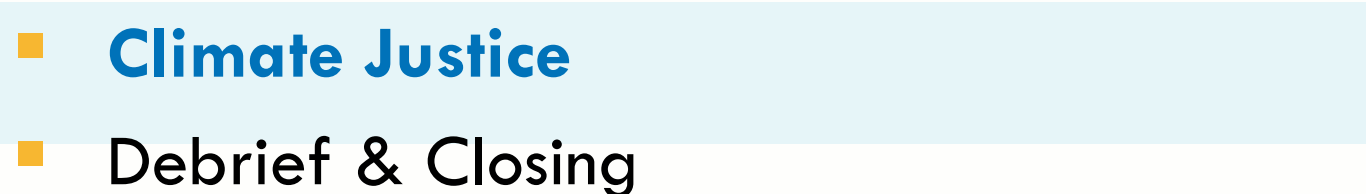
What questions do you still have?



DISCUSSION



Agenda

- Telling the story of Environmental Justice in Cambridge
 - Climate Change 101
 - BREAK!
 - Climate Change in Cambridge
 - **Climate Justice**
 - Debrief & Closing
- 

Climate Justice

- Like COVID-19, climate change is a **risk magnifier** of existing problems and vulnerabilities.
- **Climate Injustice** occurs when...
 - Vulnerable communities are hit the hardest by the effects of the climate crisis despite being the least able to prepare for or cope with the impacts.
- **Climate Justice means...**
 - Equal protection from harm
 - Equal access to benefits



HURRICANE HARVEY

The Biggest Rainstorm On Record



Image Source: Climate Justice Alliance



Image Source: Joe Raedle/Getty Images



DEMOCRACY
NOW!



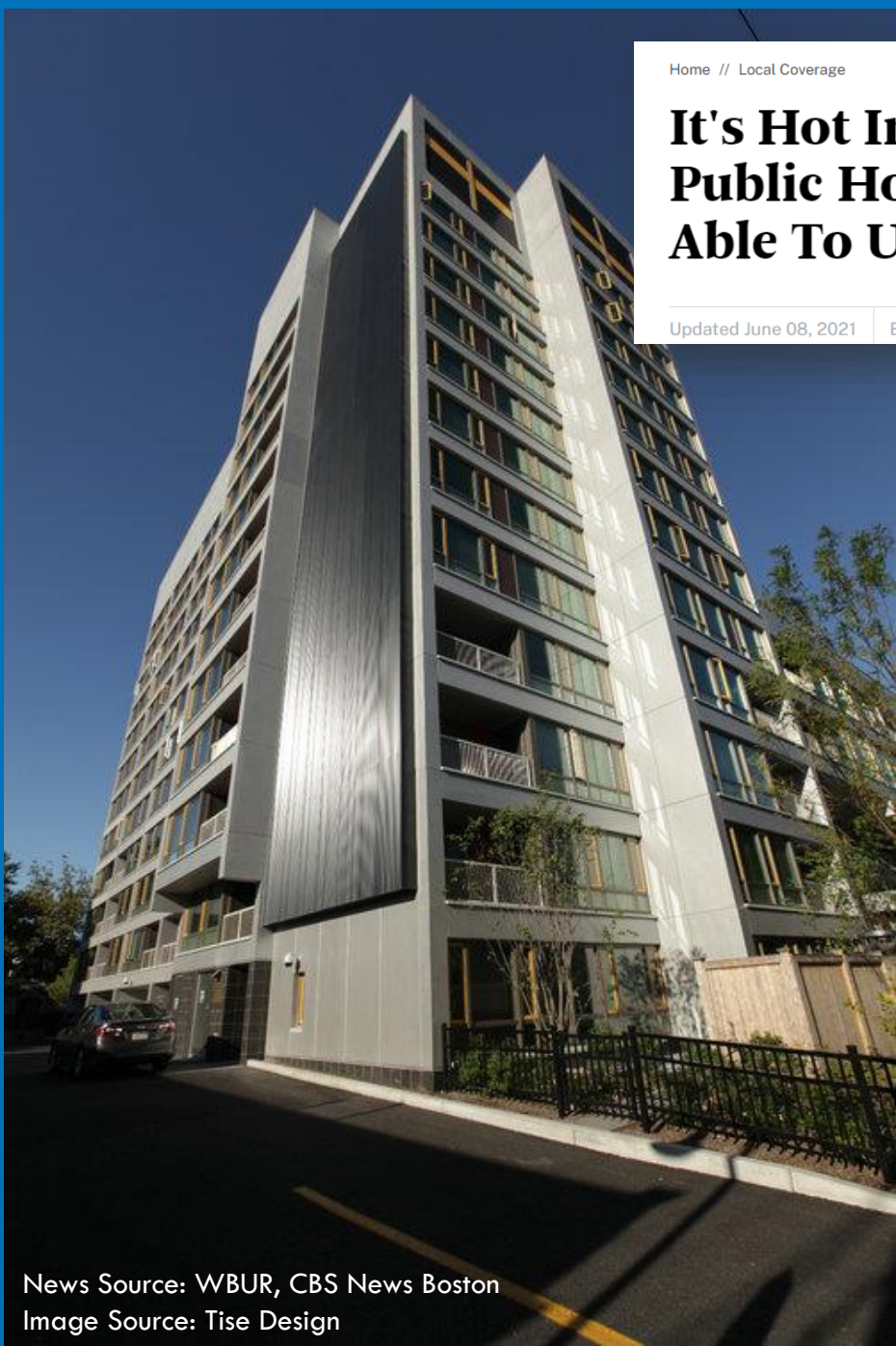
Image Source: Charlie Riedel/AP



Image Source: AP/David J. Phillip



Image Source: Trudy Lampson



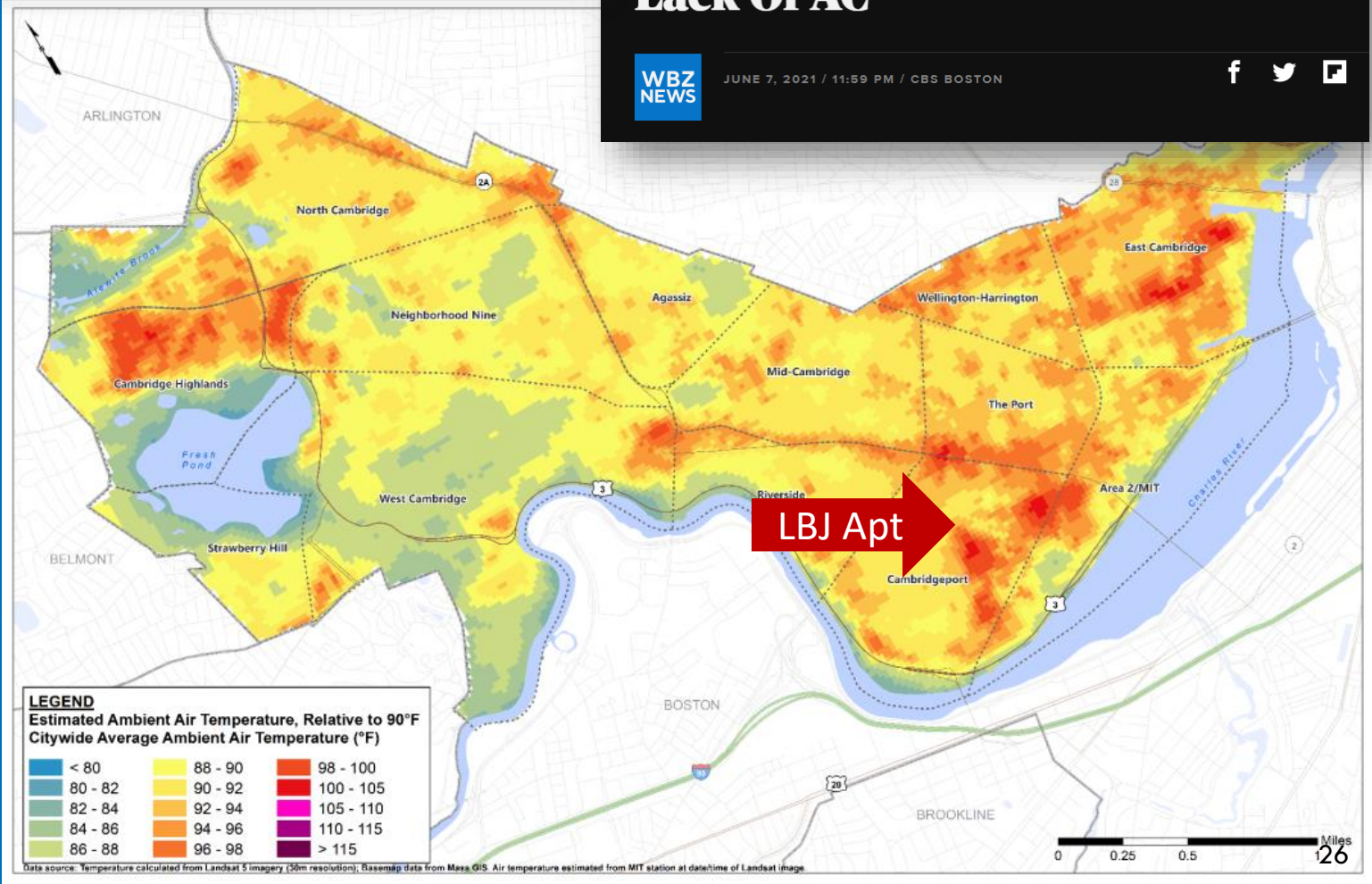
News Source: WBUR, CBS News Boston
Image Source: Tise Design

Home // Local Coverage

It's Hot In Cambridge. But Some Public Housing Residents Weren't Able To Use Their Air Conditioning

Updated June 08, 2021 By [Quincy Walters](#)

[Twitter](#) [Facebook](#) [Email](#) [Print](#)



WBZ CBS NEWS BOSTON

LOCAL NEWS >

'Sitting On A Time Bomb': Cambridge Housing Authority Residents Sound Alarms About Lack Of AC

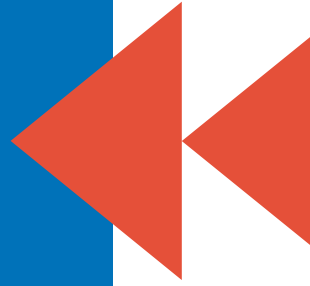
WBZ NEWS

JUNE 7, 2021 / 11:59 PM / CBS BOSTON

[Facebook](#) [Twitter](#) [Email](#)

Think about the **Port flooding** and **Jerry's Pond** examples:

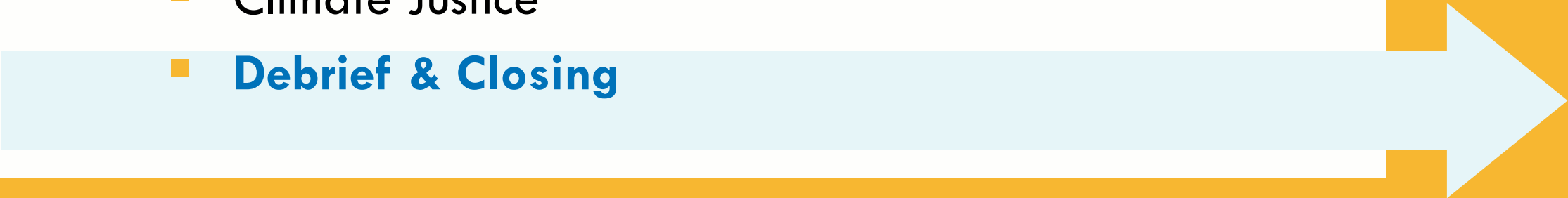
1. How are these events connected to climate justice?
2. How would you talk about these events to your friends, family, neighbors?



PAIR & SHARE



Agenda

- Telling the story of Environmental Justice in Cambridge
 - Climate Change 101
 - BREAK!
 - Climate Change in Cambridge
 - Climate Justice
 - **Debrief & Closing**
- 

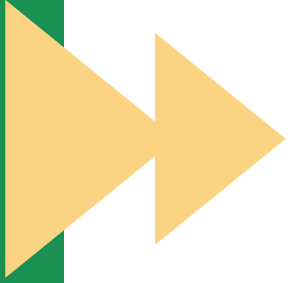


On Your Own

As you're going about your daily routine or doing outreach for C3, look for examples of climate change:

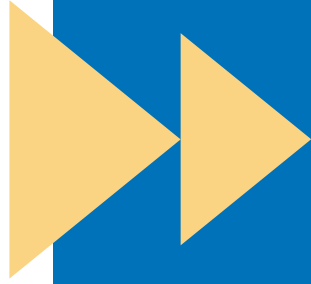
- Write them down in your phone notes
- Take a picture/video
- Take an audio note

We'll open the next session by talking about what you've observed!



Thank you!

Please take a minute to tell us how today went & fill out an evaluation form!



Jerry's Pond

EVIDENCE FILE



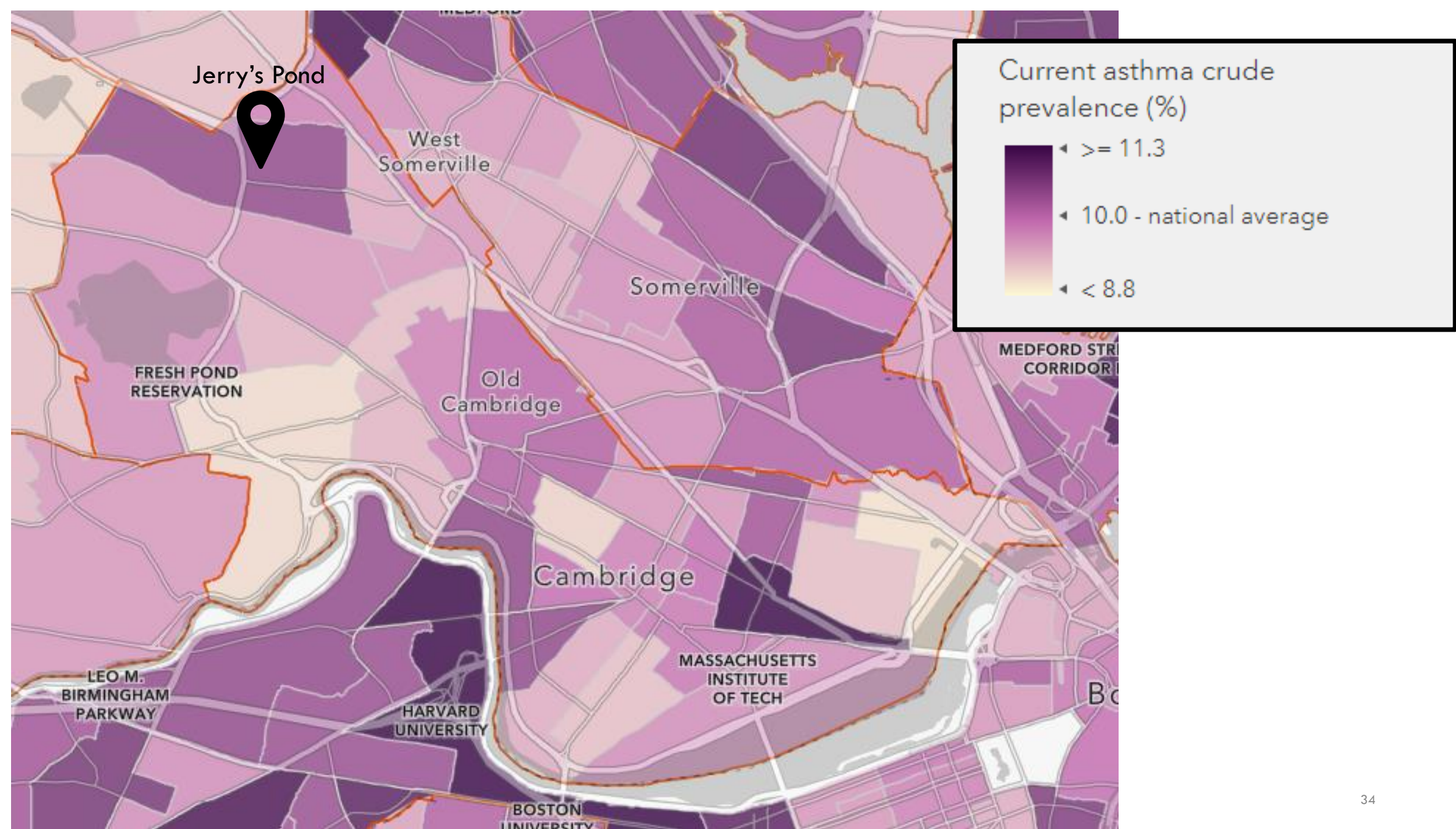
Cambridge
Public Health
Department







W.R. Grace Site ca. 1961





Please print the first page of this Article:

https://www.cambridgeday.com/2023/04/24/jerrys-pond-grant-money-goes-to-a-bridge-study-leaving-dissatisfaction-over-managers-approach/?utm_source=rss&utm_medium=rss&utm_campaign=jerrys-pond-grant-money-goes-to-a-bridge-study-leaving-dissatisfaction-over-managers-approach

Friday, May 19, 2023



SEARCH

CAMBRIDGE DAY

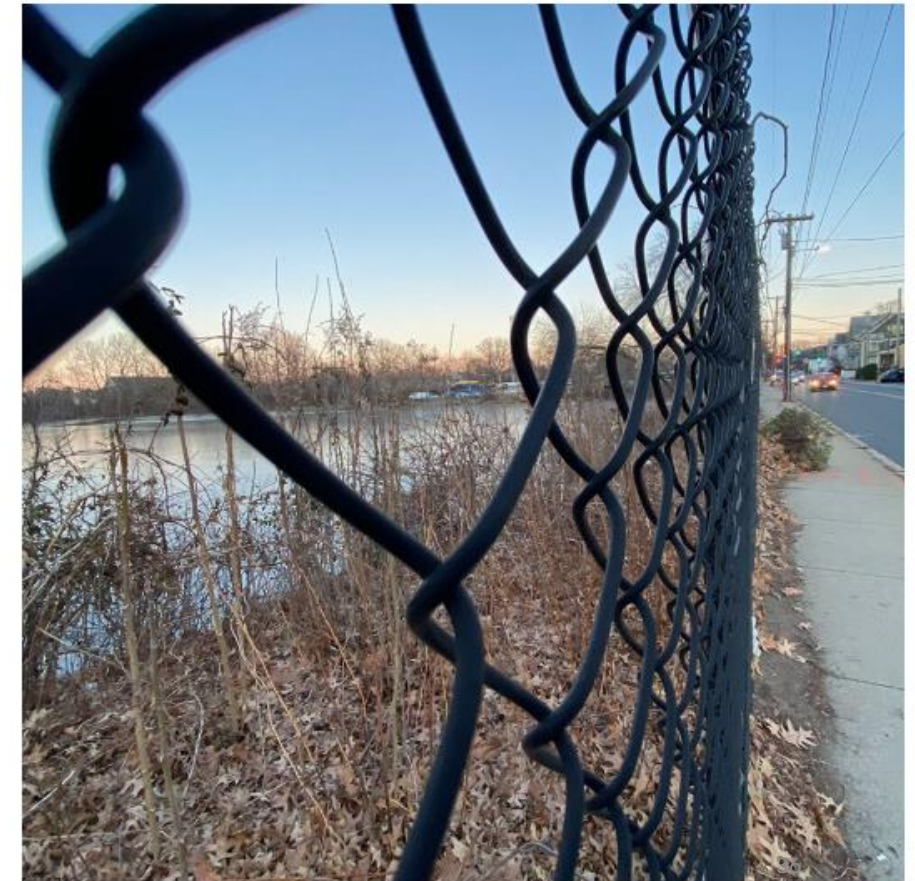
News Business + Money Arts + Culture Opinion About this site About Cambridge SUPPORT LOCAL

Home | News

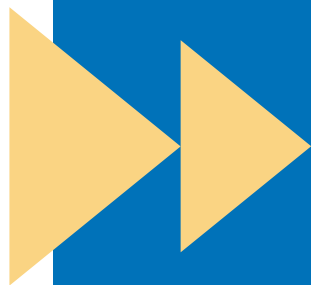
Jerry's Pond grant money goes to a bridge study, leaving dissatisfaction over managers' approach

By Marc Levy

Monday, April 24, 2023



Jerry's Pond has been fenced off since 1961. (Photo: Marc Levy)



The Port

EVIDENCE FILE



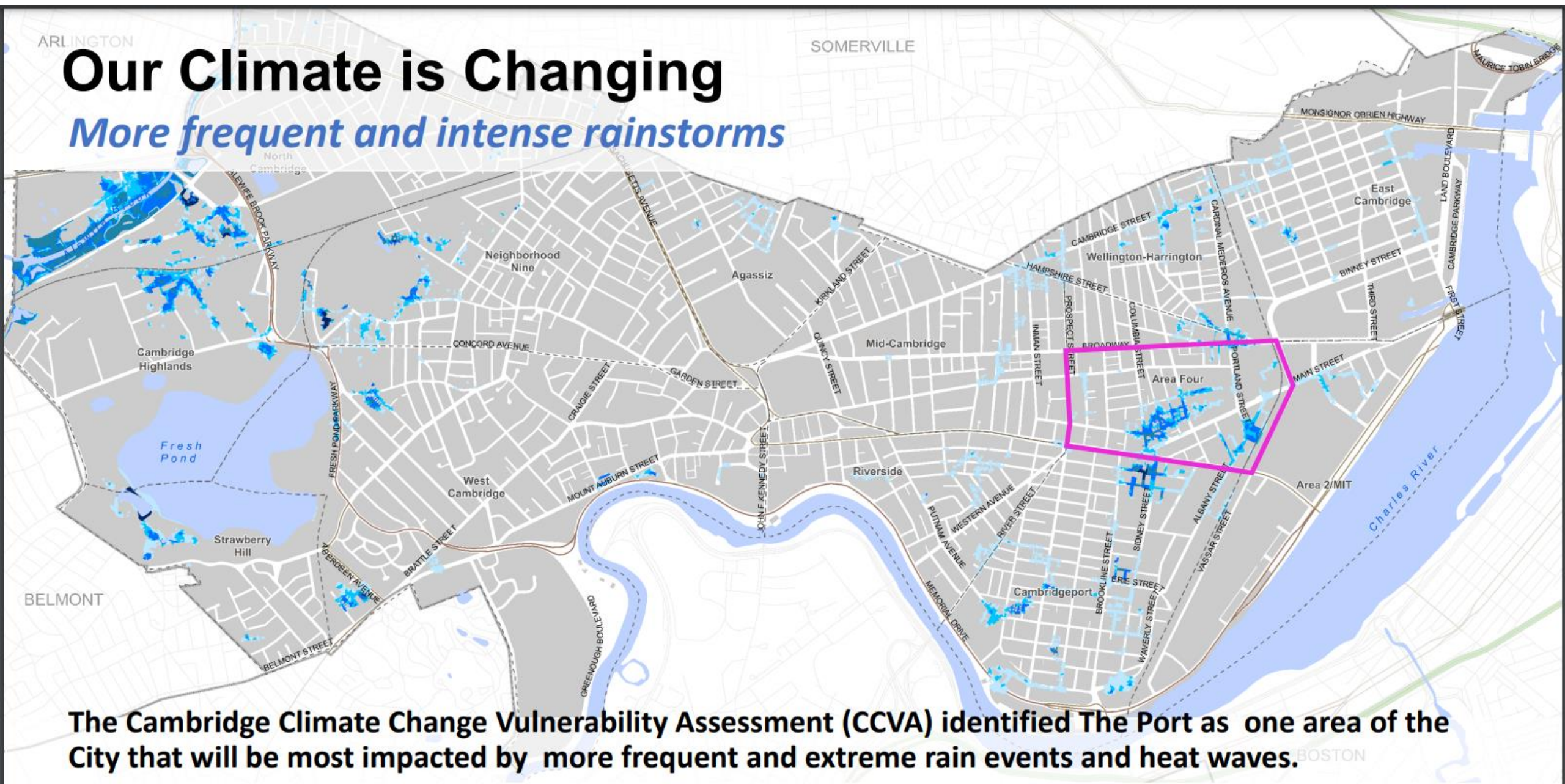
Cambridge
Public Health
Department





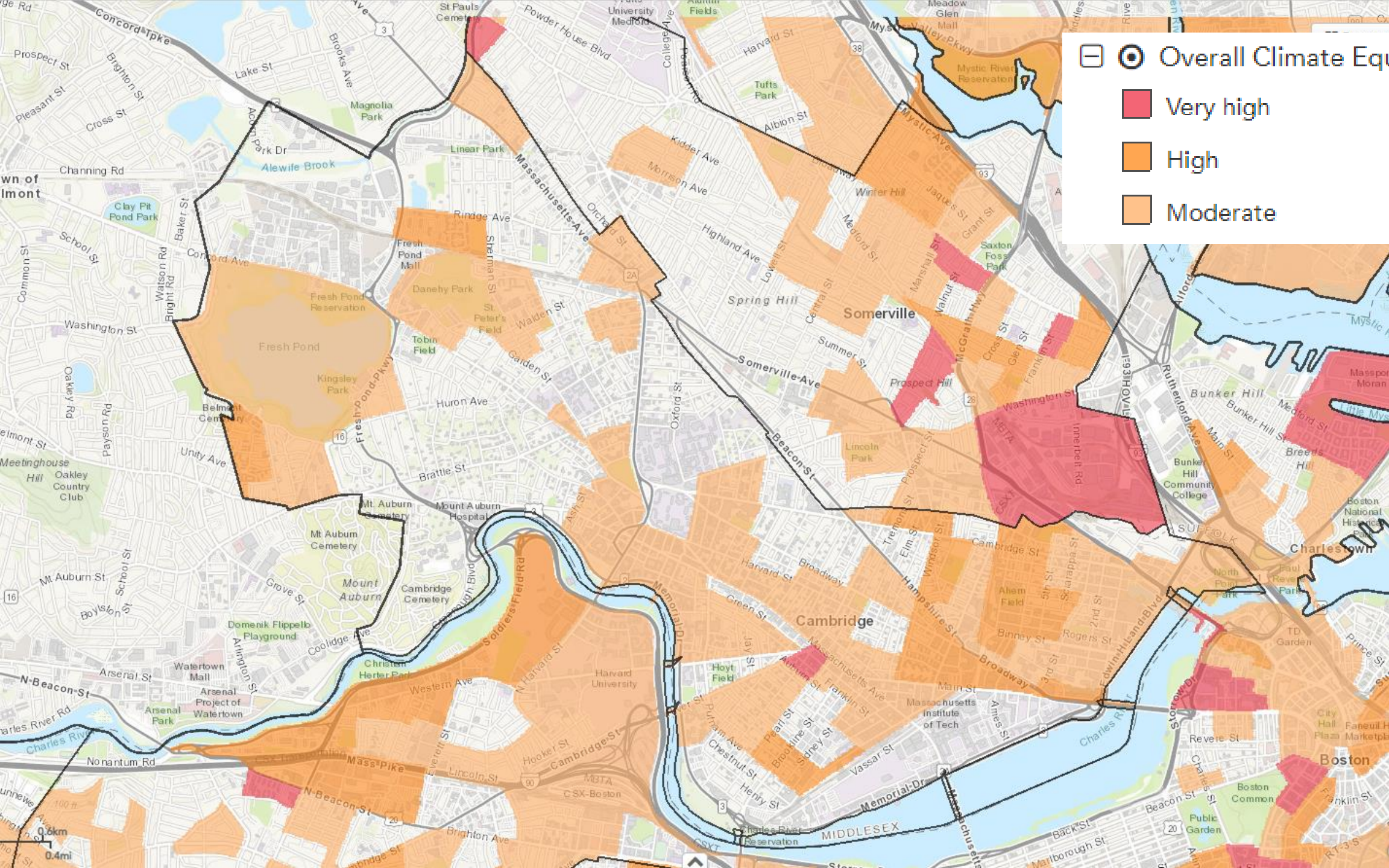
Our Climate is Changing

More frequent and intense rainstorms



The Cambridge Climate Change Vulnerability Assessment (CCVA) identified The Port as one area of the City that will be most impacted by more frequent and extreme rain events and heat waves.

Projected flooding for the 2070 10-year flooding (June 2019)



sacred music, which was pursued with great zeal and spirit, good judgment and taste; and it was resolved, that as "music was the handmaid to devotion, no piece should be admitted, but of a character suited to the solemnity of the sanctuary, and to that holiness which becometh the house of God forever."

We were now terribly annoyed by the tide-waters, which would break through the dikes, or overflow sufficiently deep for a boat to ride with ease. Cellars and kitchens full, and every thing afloat. At one time the waters were four feet deep in the first story. The waters at the ebbing of the tide, would return as suddenly as they came, but the dampness would remain for a long time. Thinking our health would suffer if we remained, we determined to remove as quickly as possible, but upon making inquiry, found it was impossible to obtain a

house, with the exception of the Phipps or Boardman house; and that being such an old castle, we thought it would not be advisable. But, upon reflection, as the bridge would soon be built, and, in the rear, a road cut through to the colleges, it would be far more pleasant and convenient; we therefore secured it.

On February 2nd, 1809, the Cambridgeport Meeting-house Corporation conveyed by agreement and indenture, the meeting-house, organ, bell, etc., to the Cambridgeport parish, at which time the corporation became extinct. From the time of the dedication of the house, in 1807, to 1809, divine service had been constantly performed, at the expense of the corporation. In March, an embargo was issued by authority, prohibiting all vessels from leaving the port. "Hard times" was now the universal cry.