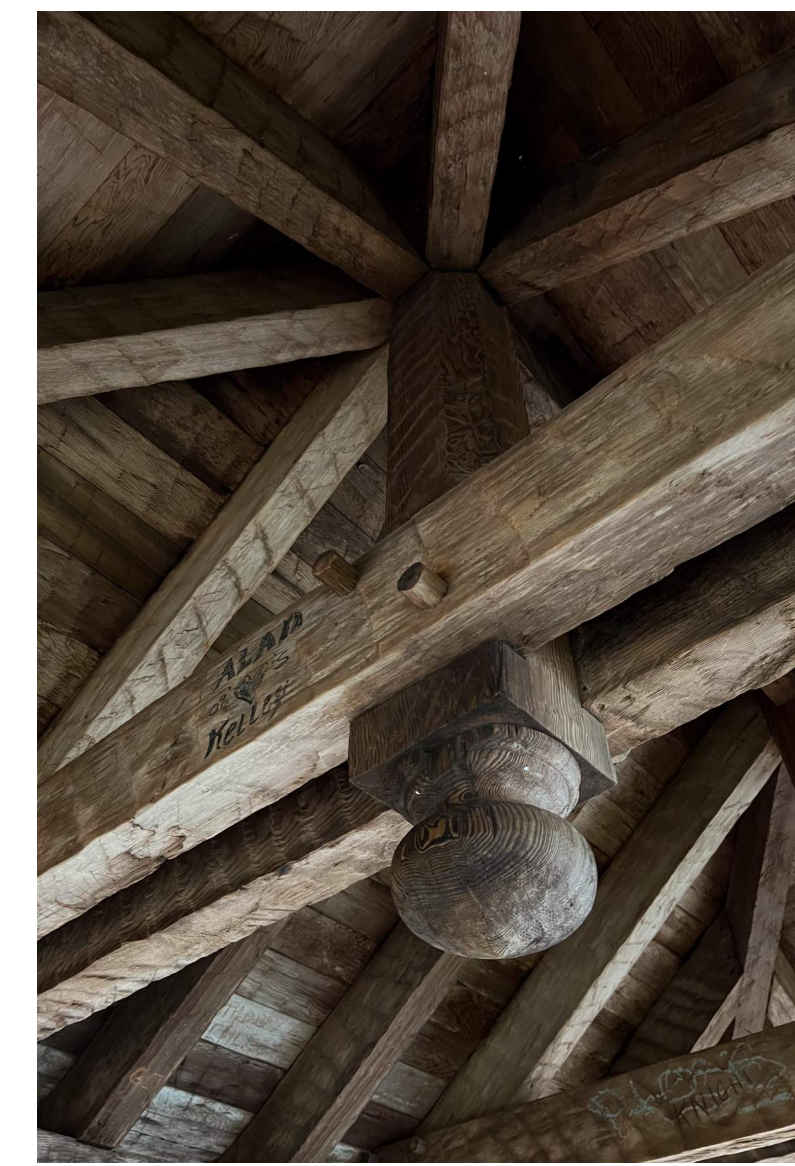




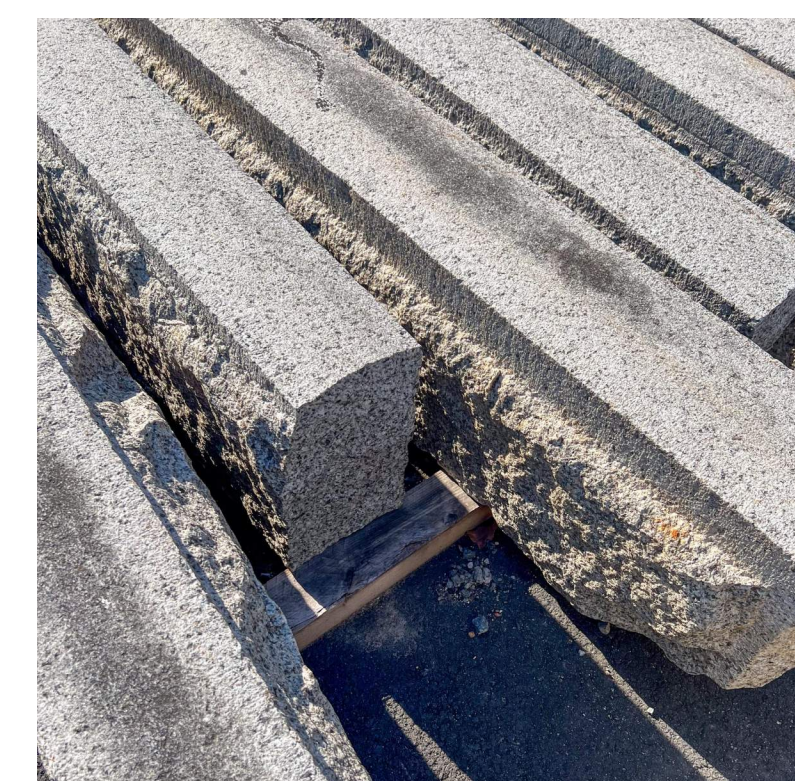
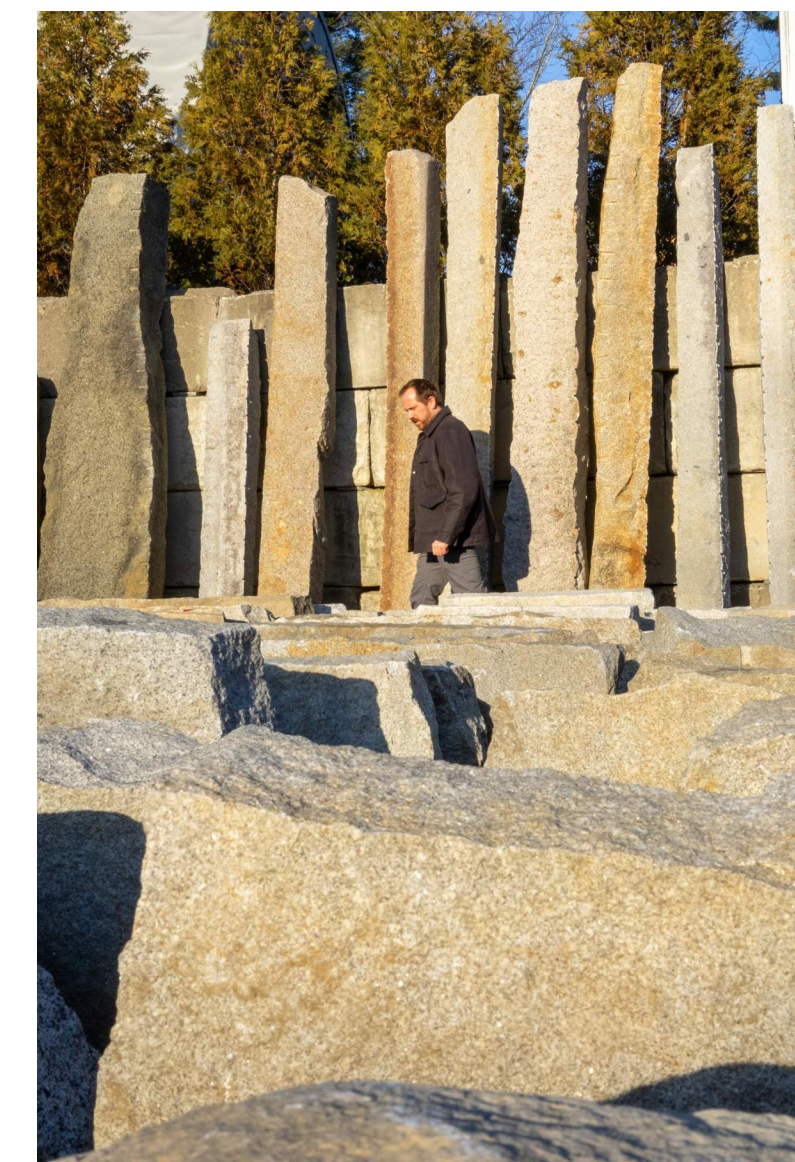


**LEXINGTON 250 MONUMENT**  
 PREPARED BY ZAQ LANDSBERG & THOMAS ROBINSON

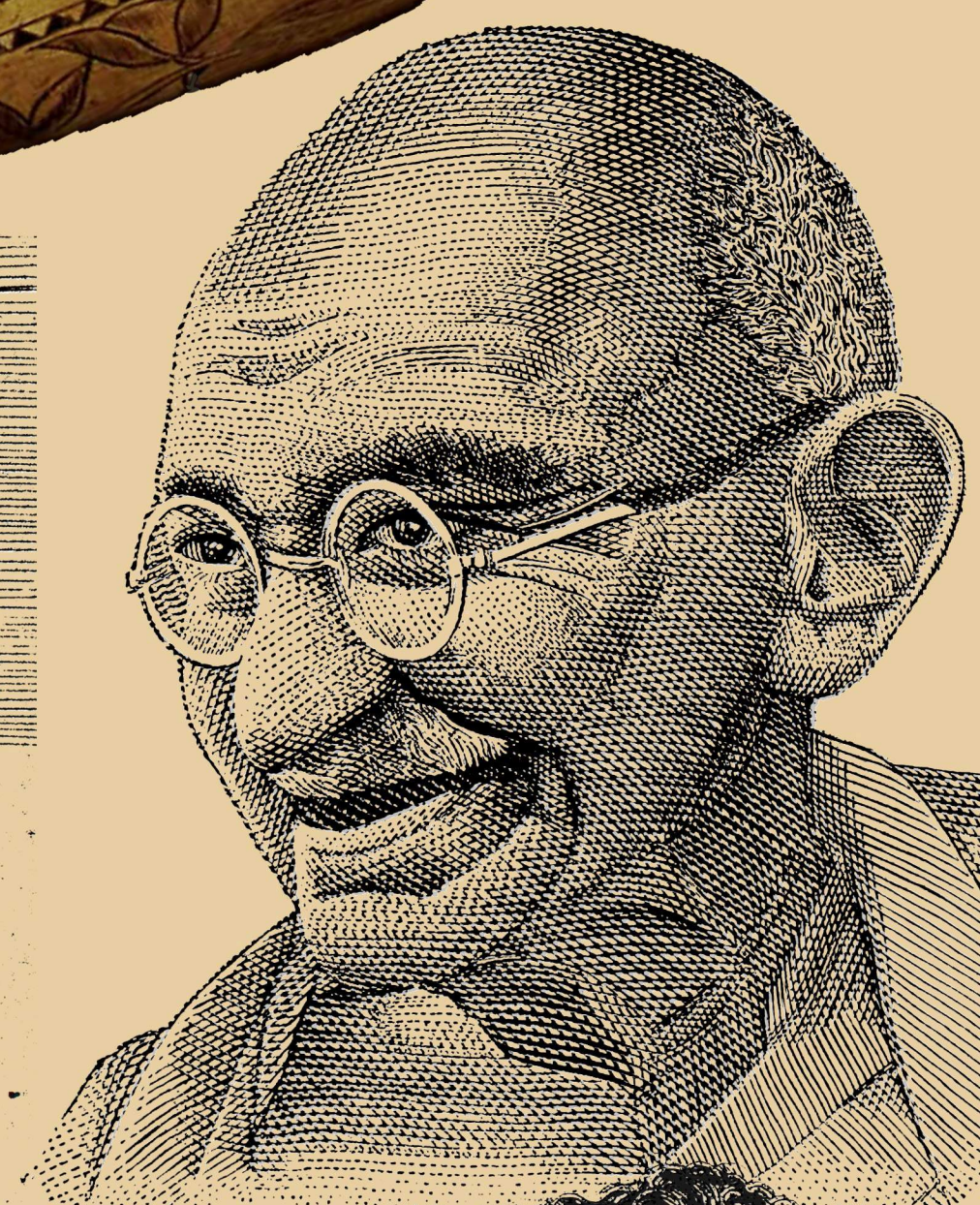


**SITE PLAN & STUDY**

"AN INTERACTIVE ROTATING BRONZE SCULPTURE PLACED IN AN ARCHITECTURAL GARDEN HOUSE AS A MONUMENT"







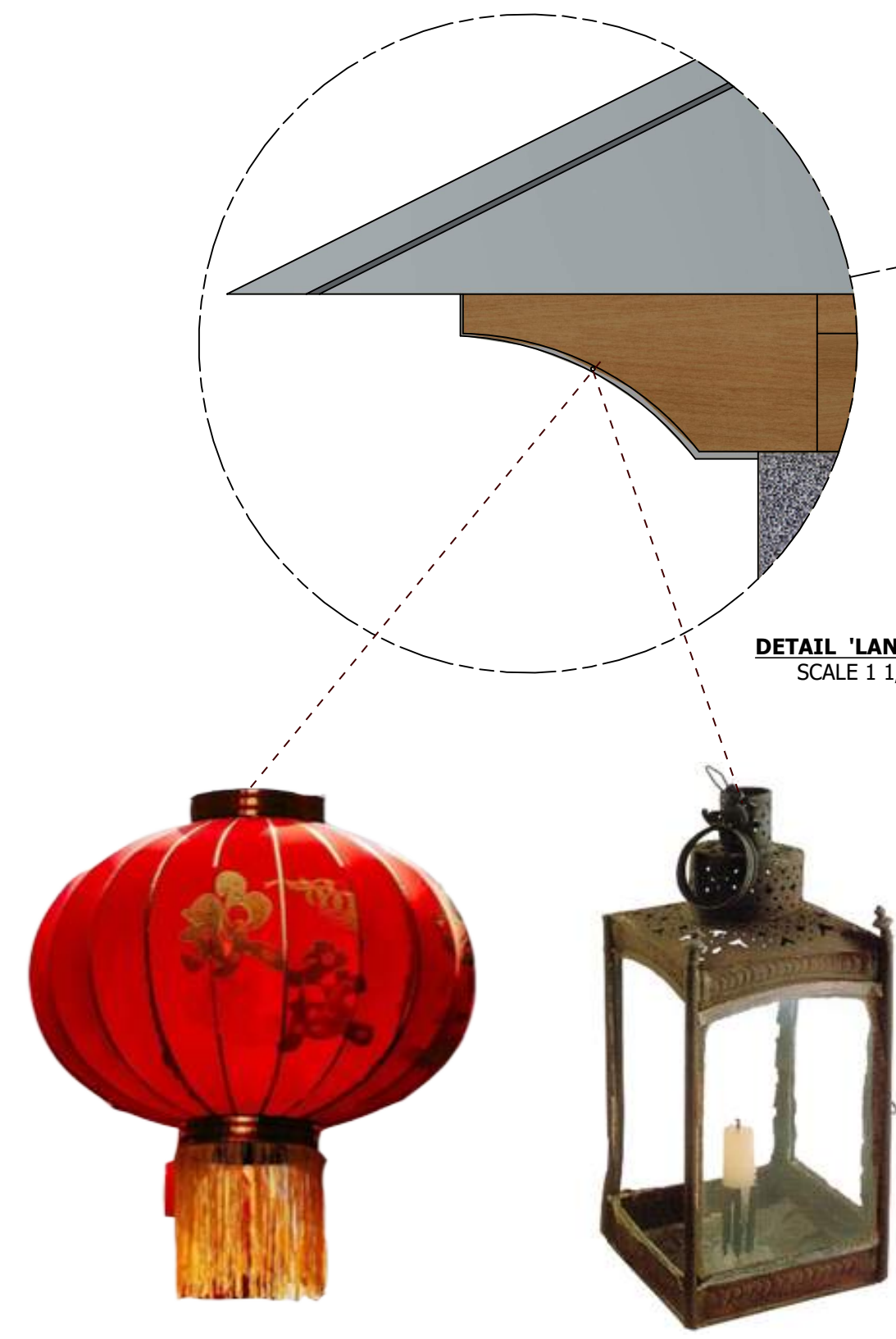




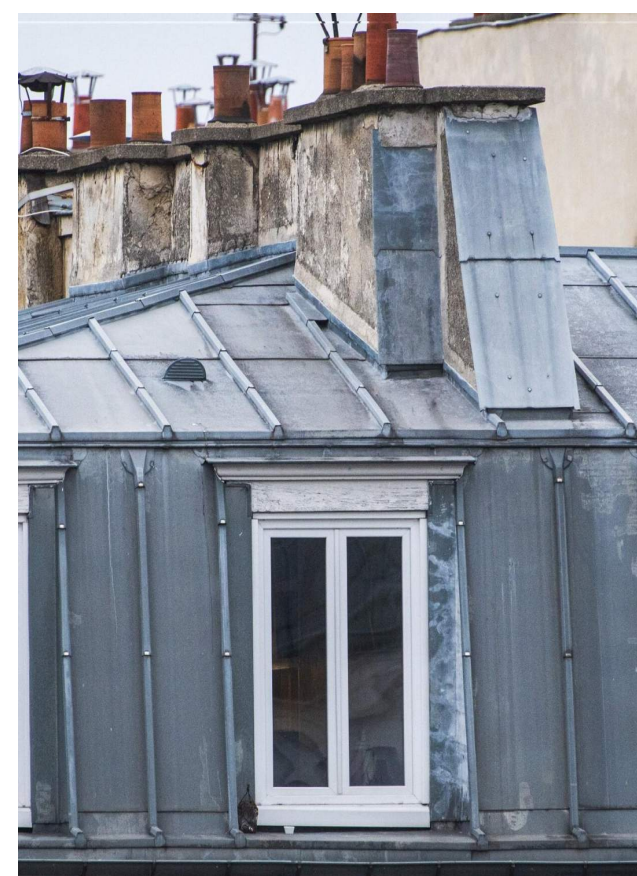
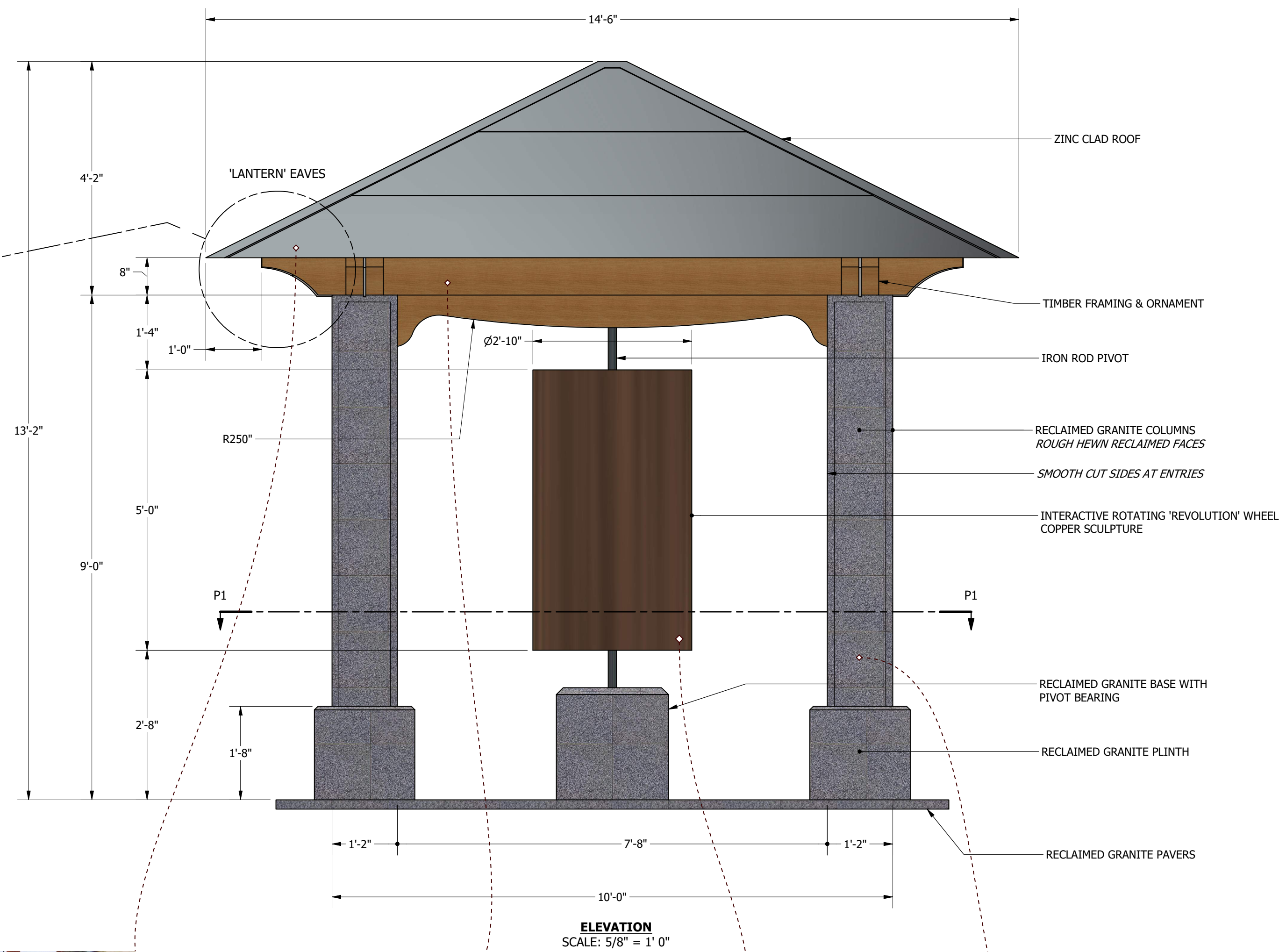


**LANTERN EAVES**

PROVIDING A SPACE FOR THE HANGING OF LANTERNS OF DIFFERENT TYPES TO CELEBRATE CULTURAL & HISTORIC EVENTS IN THE COMMUNITY OF LEXINGTON. AN OPPORTUNITY TO CREATE TRADITION AND INTERACTION WITHIN LOWER BELFRY PARK.



**DETAIL 'LANTERN' EAVES**  
SCALE 1 1/2" = 1'-0"



**NATURAL ZINC**



**TIMBER FRAMING**



**BRONZE / COPPER**



**RECLAIMED GRANITE**

**MATERIALS**

EMPHASIZING THE USE OF LOCALLY SOURCED HISTORIC MATERIALS. WORKING WITH 'LIVING' MATERIALS THAT WILL NATURALLY WEATHER AND AGE IN A TIMELESS MANNER.

