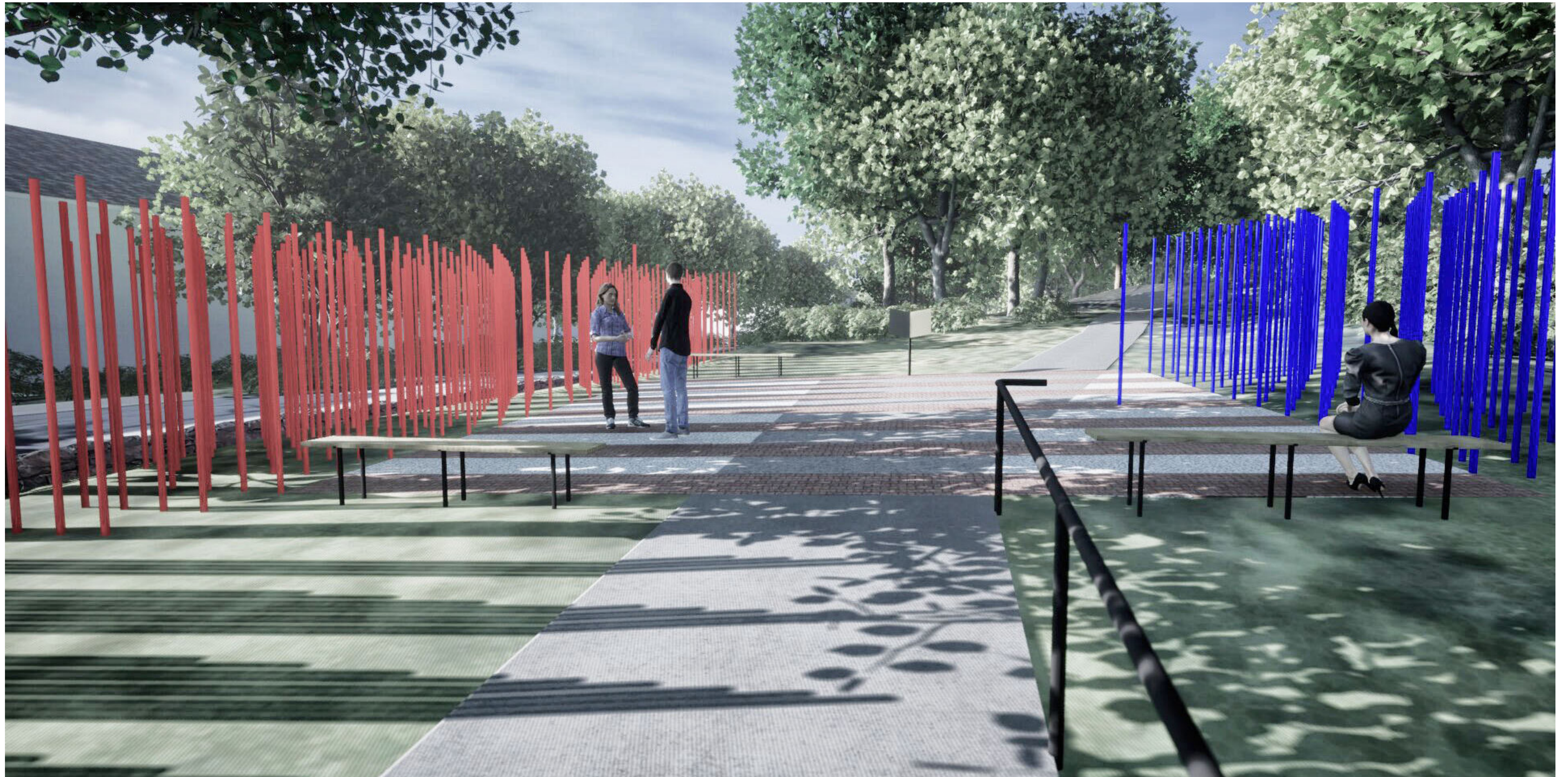


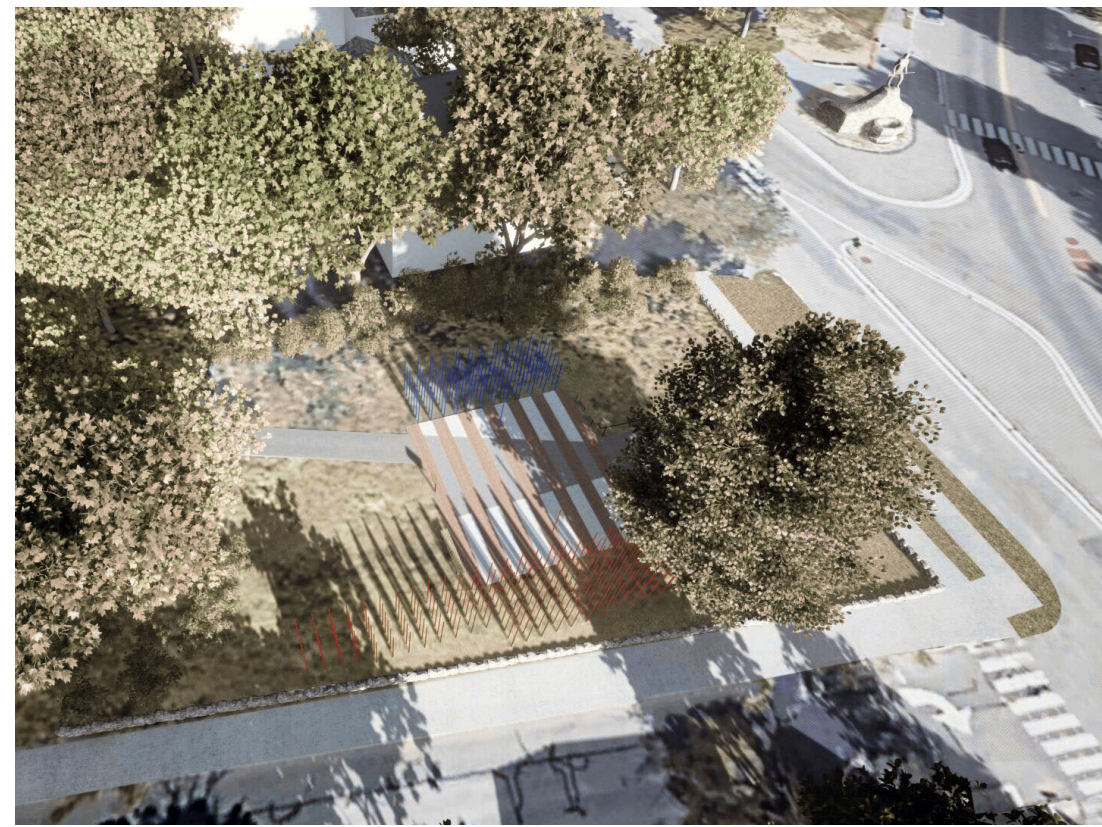
THE PATH TO LIBERTY: The Battle of Lexington, April 19, 1775



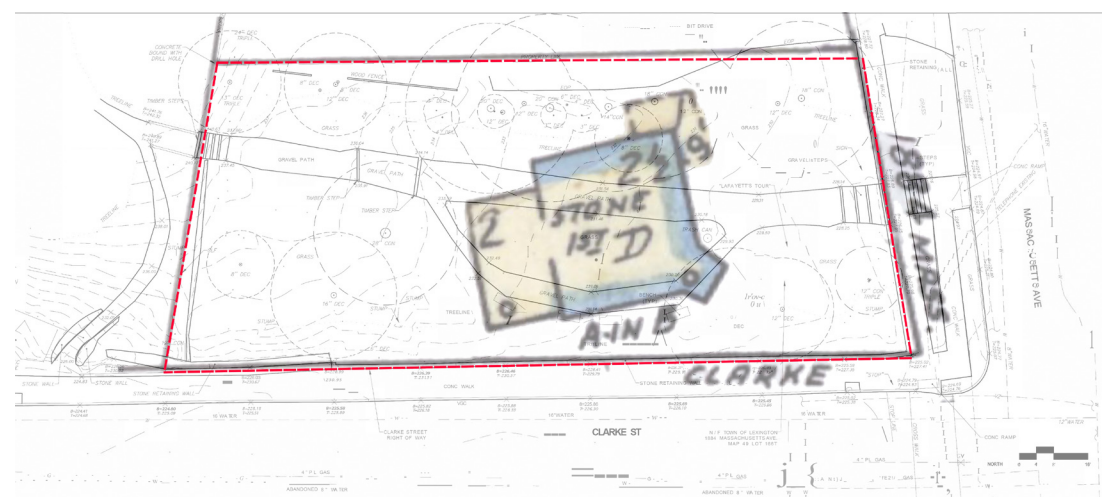
An allegorical garden and sculptural reenactment.

Miriam Gusevich

SITE SPECIFIC AND INCLUSIVE



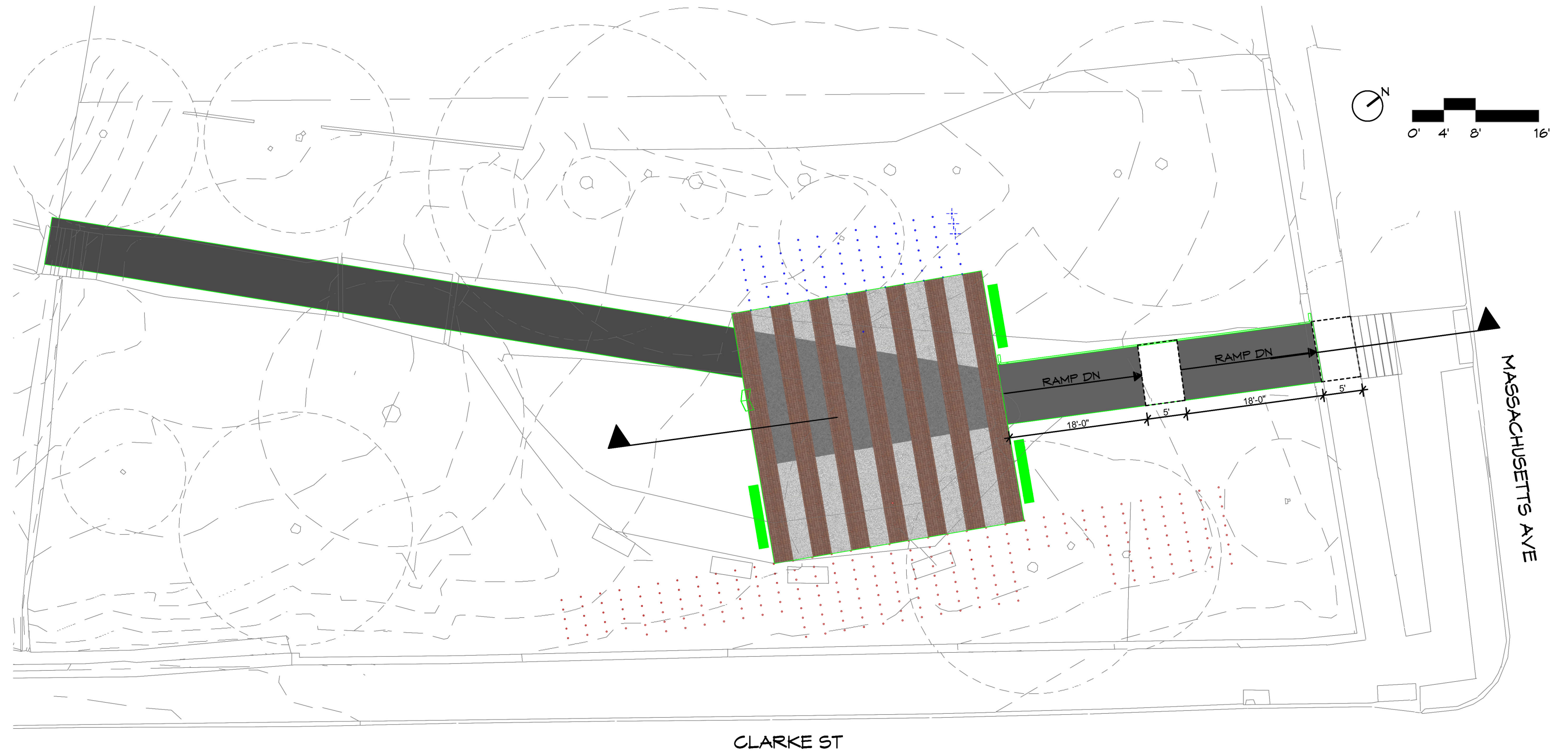
Areal view with the new monument.



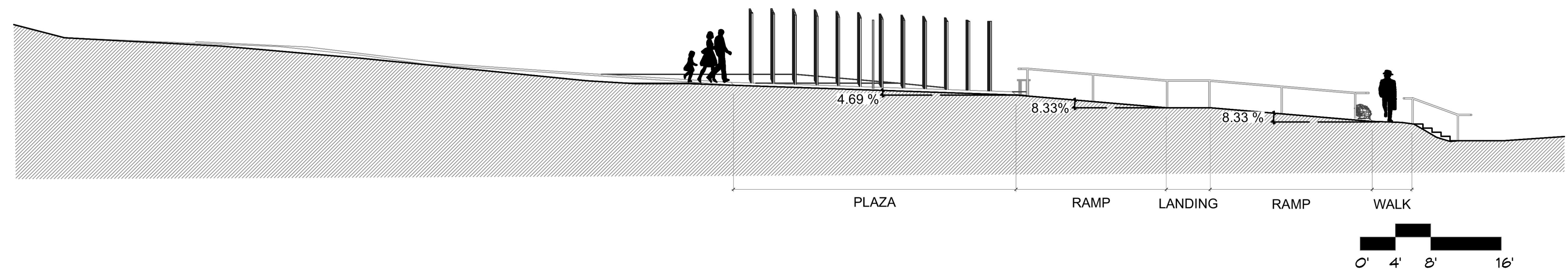
Overlay: 1918 Sanborn Map and existing



Cor Clarke St + Massachusetts Avenue
Katherine Harrington House c. 1930's

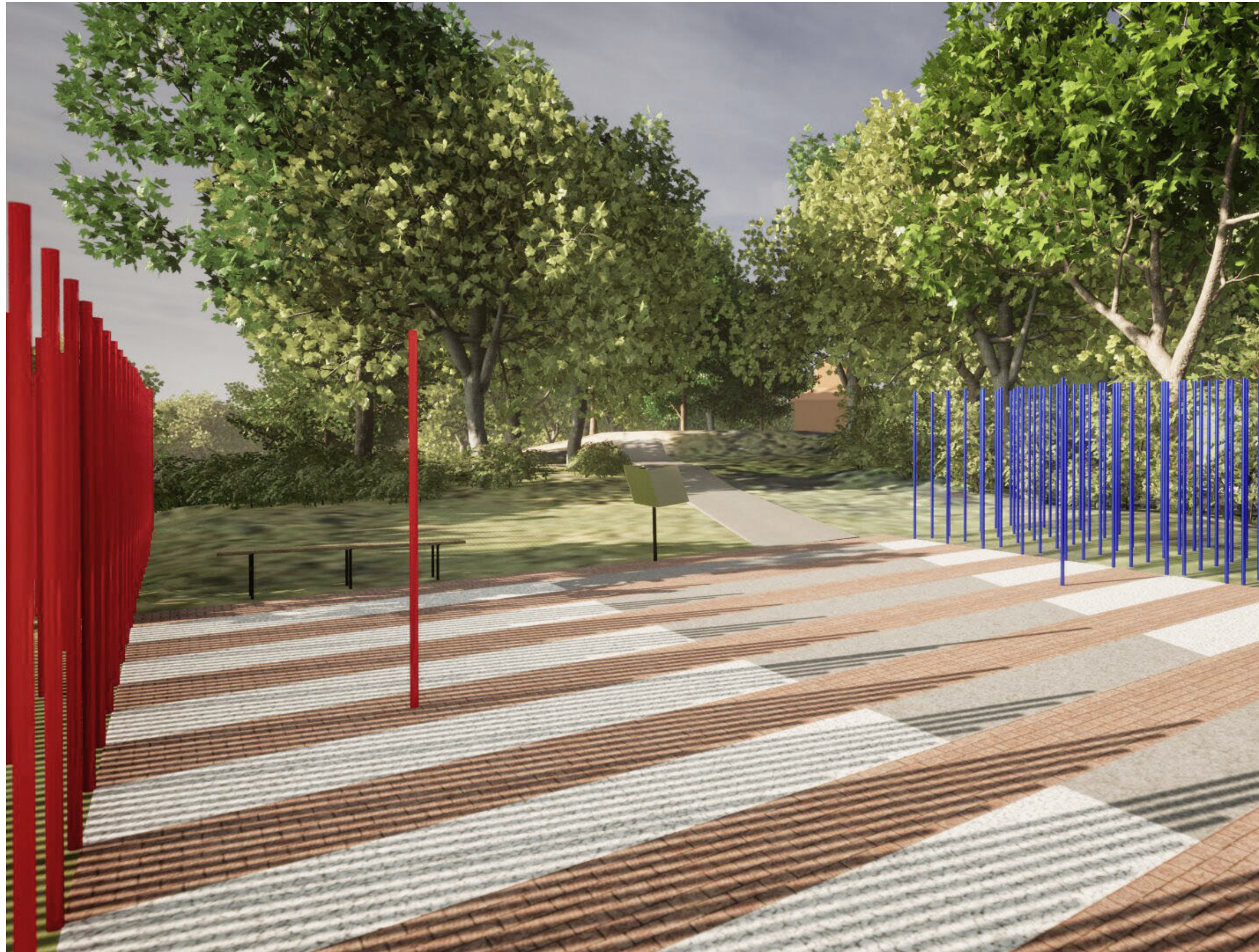


Plan: Proposed intervention over existing conditions.



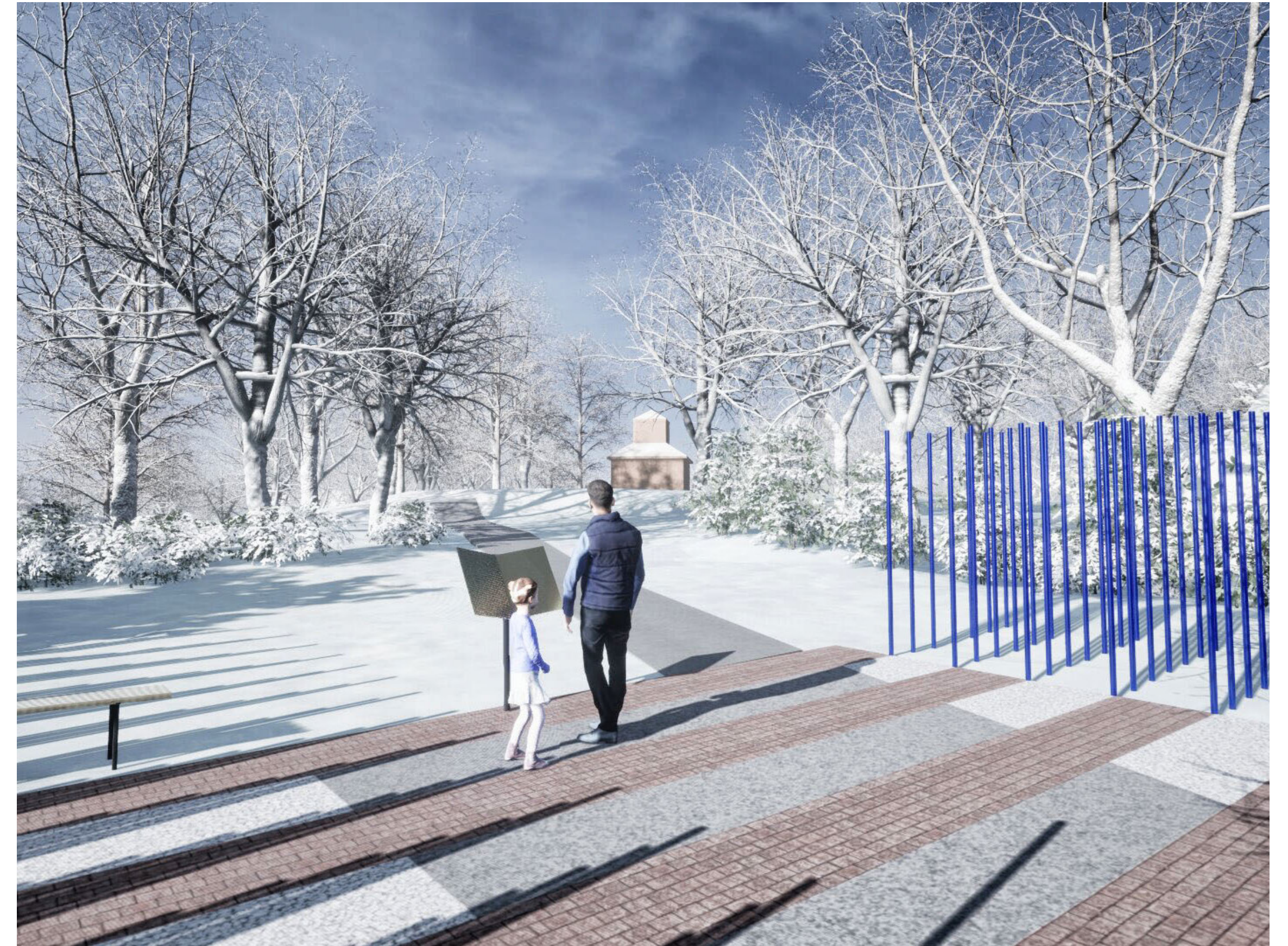
Section: Entrance is fully ADA accessible and welcomes all equally.

INTERACTIVE AND ENGAGING



The battle formation reenacts this historic struggle.

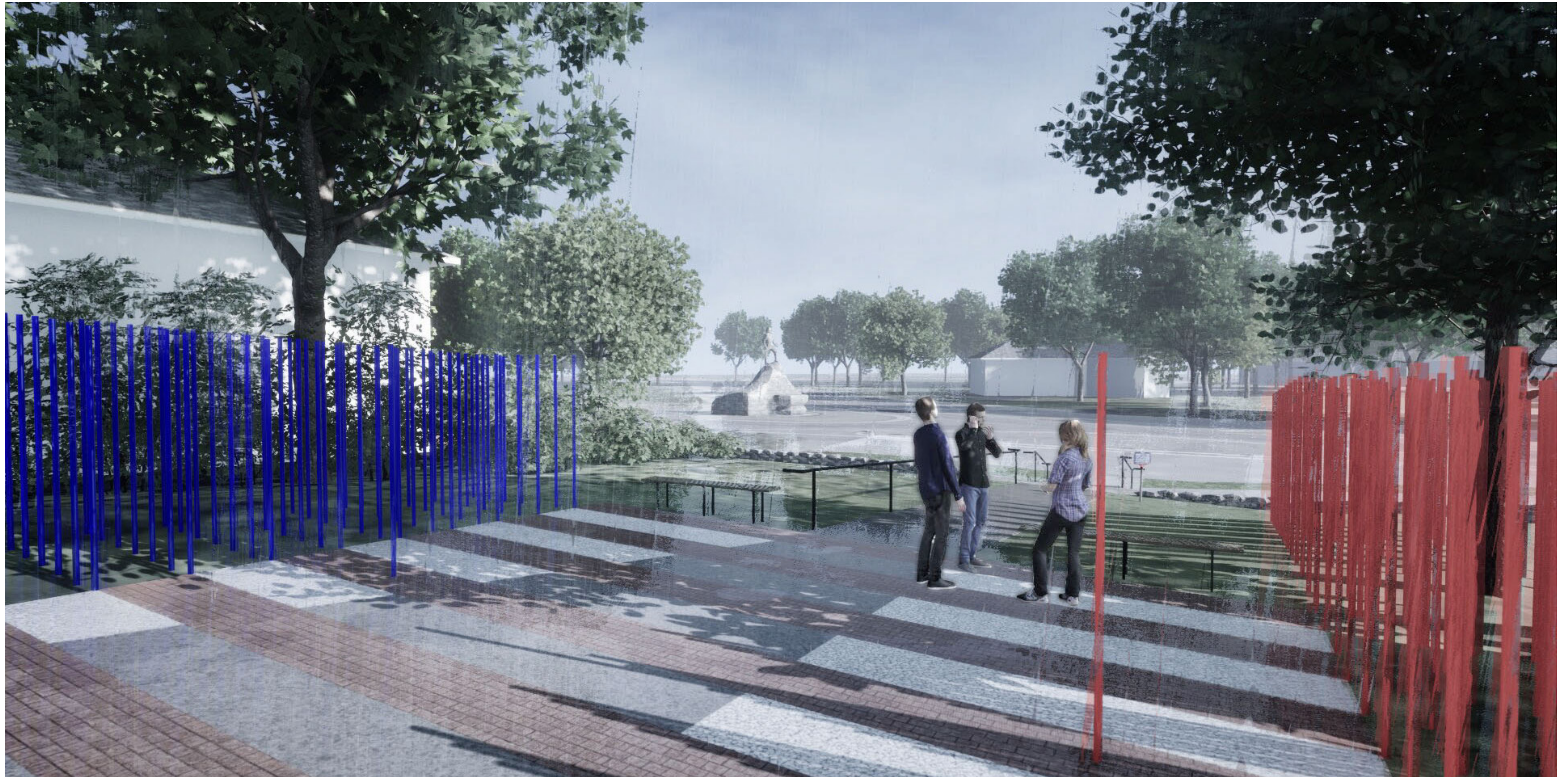
Memorial welcomes everyone equally, to explore, play, walk-in between, read the names of the Patriots (blue).



An open book, visually accessible, by touch with braille.

An Audio QR code makes the story come alive; it allows anyone to listen on their own phone and overcome visual and language barriers.

INSPIRATIONAL AND TIMELESS



New memorial square welcomes all to learn, honor our heroes, reflect on liberty and sacrifice, debate and exercise our democracy.