

I-90 Corridor Development and Resiliency Plan

MetroWest Regional Collaborative

March 28, 2024



- **Introductions**
- Project Overview
- Project Timeline and Outcomes
- Thank You & Next Steps

Metropolitan Area Planning Council (MAPC)

Eric Hove

Director of Strategic Initiatives

Courtney Lewis

Senior Regional Land Use Planner

Avanti Krovi

Senior Regional Land Use Planner

Municipalities



- Ashland
- Framingham
- Natick
- Watertown
- Wellesley

Agenda



- Introductions
- Project Overview
- Project Timeline and Outcomes
- Thank You & Next Steps

Project Goal and Process



The overall goal of this multi-municipal regional planning project is to **gain support from the Healey Administration in prioritizing state investments and providing technical assistance to the locations identified as state priority areas.**

Build on established community-based priorities and strategies along the I-90 corridor



Integrate those priorities into regional and state development and preservation priorities



Provide a direction for public investments that prepare these sites for climate change, while supporting development in advantageous locations

Ways to Plug In



- **Help us identify Community-Based Organizations (CBOs) to partner with**
- **Provide ground-truthing and feedback on draft regional PDAs/PPAs**
- **Help identify and review recommendations for PDAs/PPA's**

What are PDAs and PPAs?



Priority Development Areas (PDAs)

- Areas that have development or redevelopment potential for **housing** and **economic growth** and meet local and regional needs due to either their size, location, or other attributes that would help to achieve **regional** and **state goals**.

Priority Preservation Areas (PPAs)

- Are important areas that should be protected because they contain significant **natural** or **cultural resources**, such as endangered species **habitats**, **water resources**, **forested** and **agricultural** land, and **climate resilient landscapes**. These areas typically extend across multiple communities.

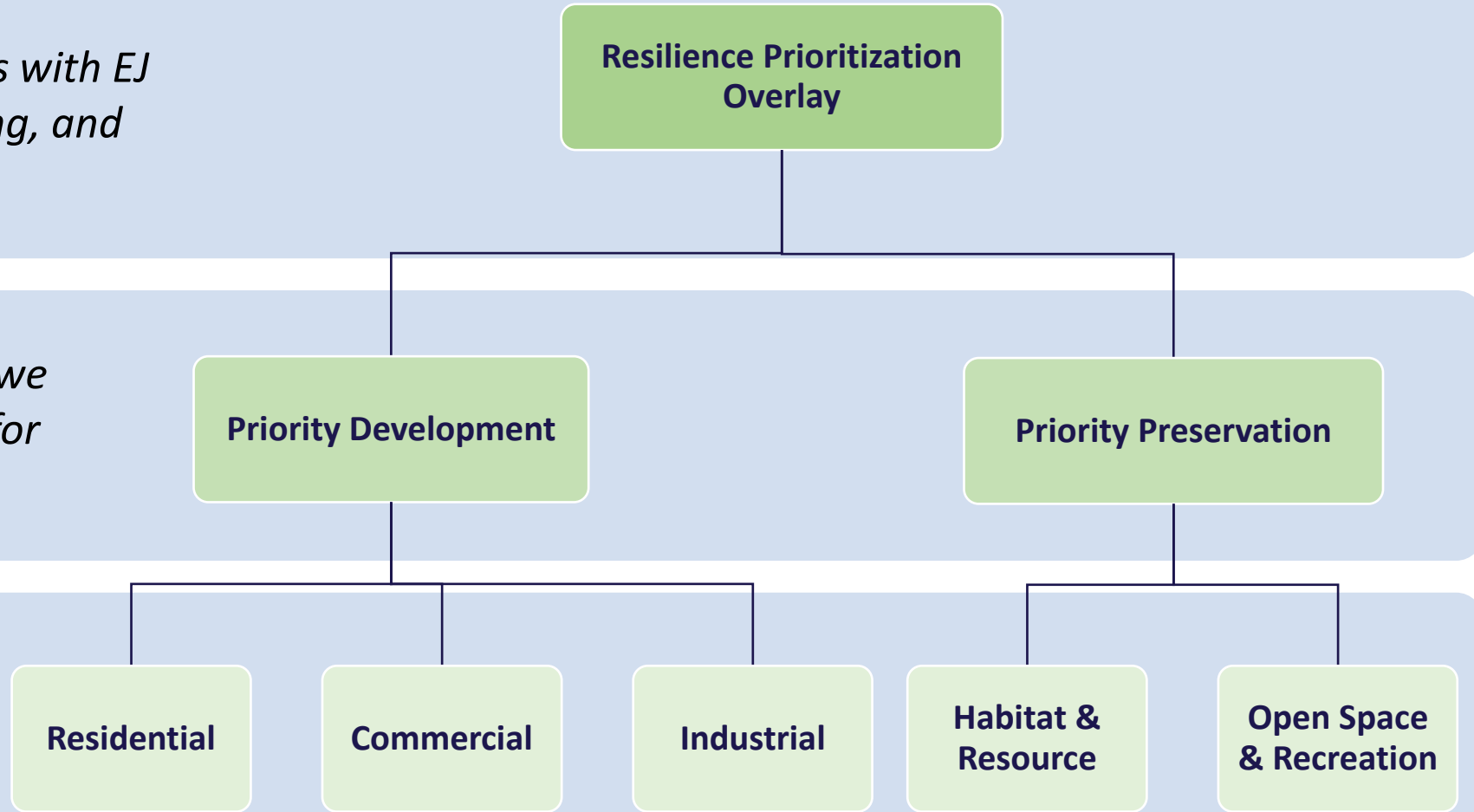
Suitability Analysis



Overlay: We consider block groups with EJ populations, extreme heat, flooding, and climate vulnerability

Priorities: Using overlay analysis, we determine whether area is suited for development or preservation

Categories: We further categorize development or preservation areas to inform recommendations



Project Engagement



 **6 Individual Meetings to discuss local priorities**

 **2 Regional Forums to discuss regional feedback**

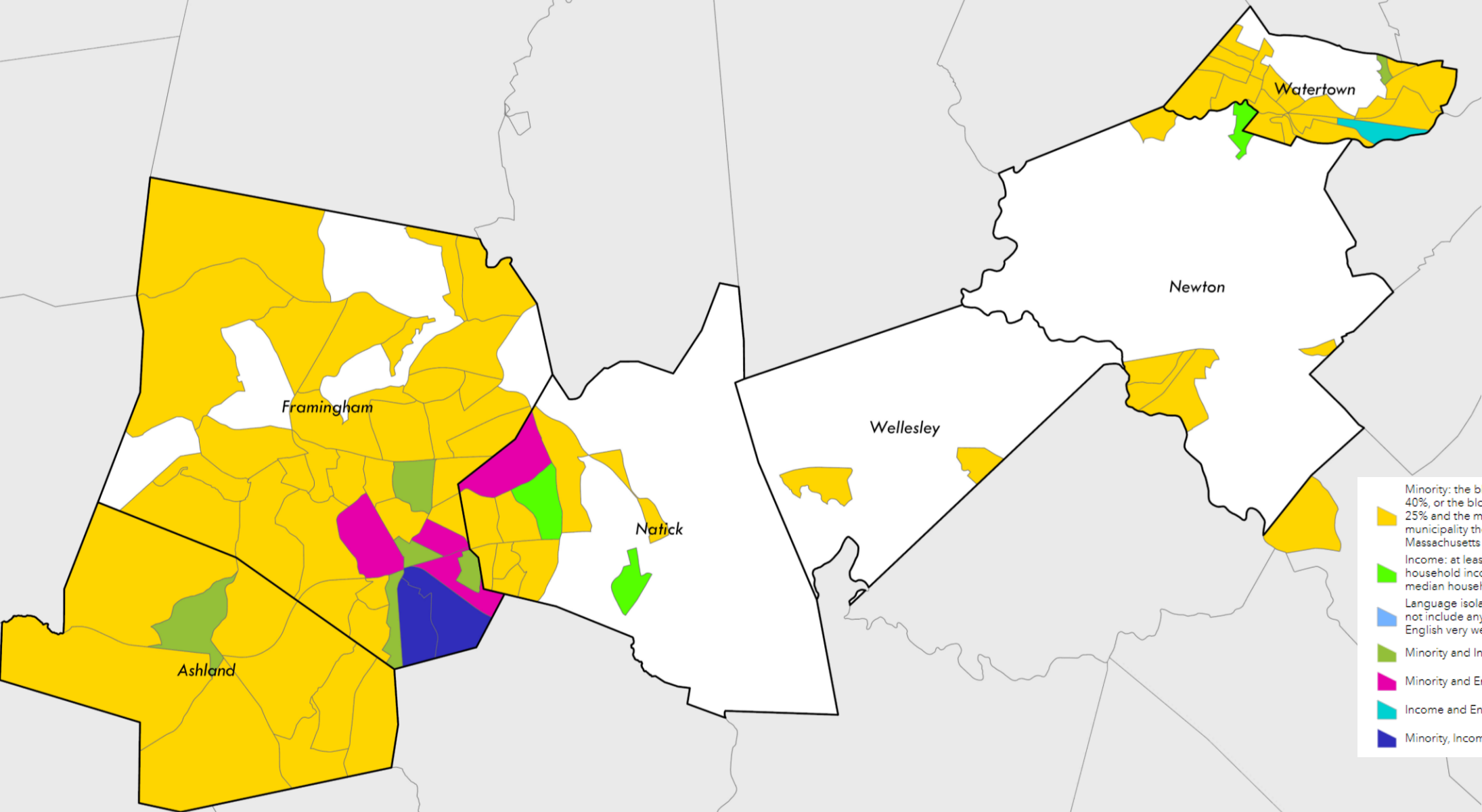
 **Interactive Mapping to solicit and gather feedback**

 **3 CBO Roundtables for community-led engagement**

 **State Agency Review with key departments**

 **Final Presentation of priorities and plan**

Environmental Justice Population

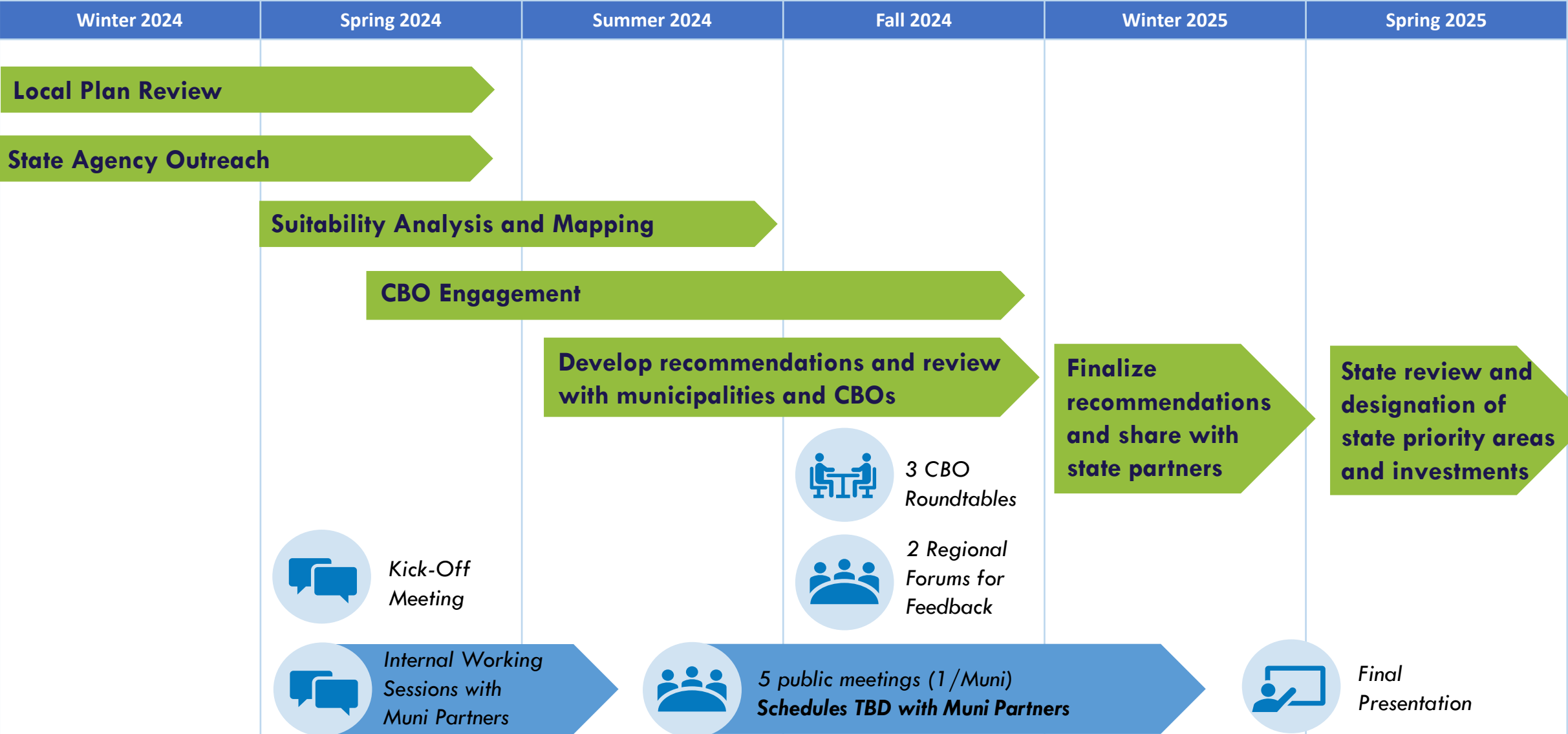


Agenda

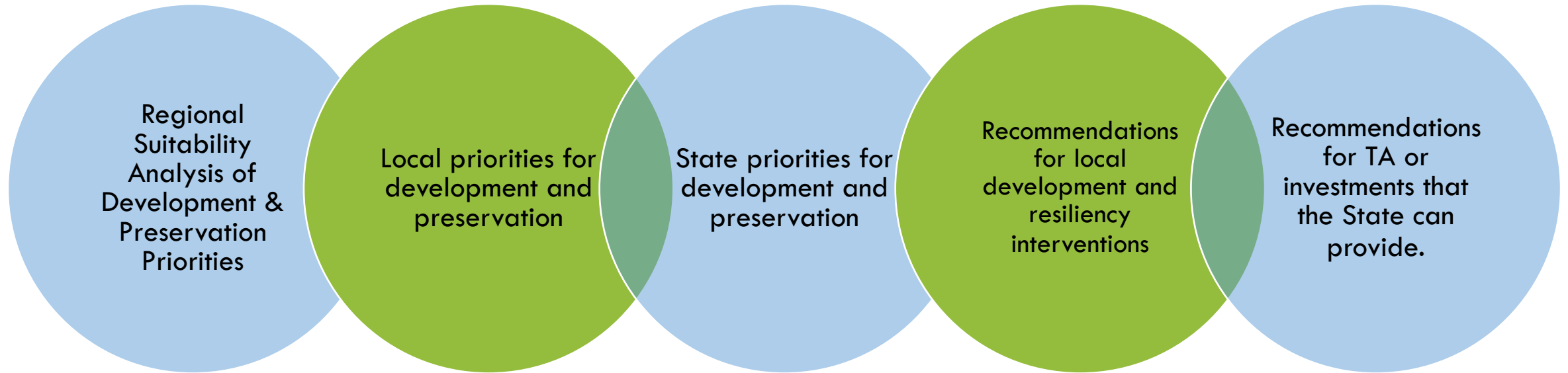


- Introductions
- Project Overview
- Project Timeline and Outcomes
- Next Steps & Thank You

Project Timeline



Anticipated Outcomes



Stay in Touch



- Eric: ehove@mapc.org
- Courtney: clewis@mapc.org
- Avanti: akrovi@mapc.org



Questions?

Ideas?

Thank you!