

Welcome!

Accelerating Climate Resilience Speaker Series

Shade is Social Justice: How the City of Cambridge Tackles Heat Mitigation



Matthew Akira Okazaki



Jeff Goldenson



Alejandro Saldarriaga



Gabriel Cira

Zoom Logistics

- Please enter questions in the chat box
- To use the chat, click on the “chat” icon at the bottom of your screen, type in your question, and hit enter.
- Remain on mute

We reserve the right to expel anyone at any point should they disrupt the meeting for any reason. Similarly, we may need to end the meeting early and will follow-up with participants.

Accelerating Climate Resilience Speaker Series

Conversations with experts and practitioners from across the country who can speak to the ways they are perceiving and advancing resilience.

Past events include conversations about the effects of sea level rise on municipal budgets, climate resilience and racial justice, building social resilience through art, and empowering youth movements on climate.



Today's Facilitator and Guest Speakers



Claudia Zarazua

City of Cambridge Arts & Culture
Planning Director



Alejandro Saldarriaga

Founder of Alsar –Atelier,
Visiting Assistant Professor at
Northeastern University



Jeff Goldenson

Founder, Buildingways



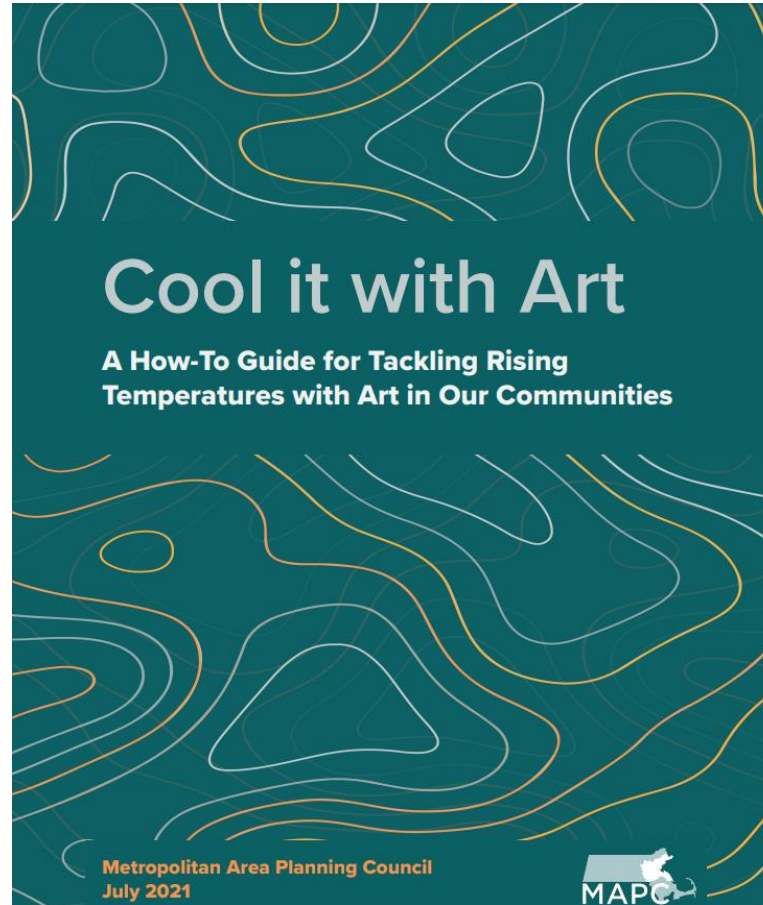
Matthew Akira Okazaki

Professor of Practice in Architecture
at Tufts University, Principal at Field
Office LLC, Principal at Architecture
for Public Benefit



Gabriel Cira, RA

Principal Architect, ARCH CIRA
Assistant Professor in the History
of Art at MassArt



<https://www.mapc.org/resource-library/cool-with-art/>

Types of Interventions



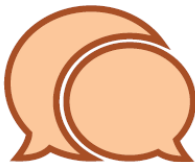
Creative Engagement

Artists and creatives are key collaborators in developing messaging that promotes awareness of climate risks and preparedness measures in the community.



Creative Cooling Infrastructure

Artists and creatives develop creative interventions that provide shade and other cooling opportunities in the public realm.



Creative Communications

Artists and creatives are leaders and collaborators in developing effective public participation and cultural programming that promotes climate preparedness and resilience.

My Park, My Pool, My City Austin, TX



Performances, art making, events at public pools

My Park, My Pool, My City was a three-year artistic residency led by Forklift Danceworks in partnership with the City of Austin Parks & Recreation Department's Aquatics Division and several East Austin neighborhoods. Using collaborative art making, *My Park, My Pool, My City* activated and amplified civic engagement around the future of Austin's city pools. In addition to three summer performances, Forklift Danceworks hosted and participated in town hall gatherings, community workshops, film screenings, and pool parties leading up to and following each show. The project brought together citizens, city staff and policy makers to encourage people to talk about this policy issue as it unfolds.



The Refreshing Waters



New York City

Temporary outdoor cooling center with seating, shade, fan, and mist

Project Partners:

- Interboro Partners
- Southeast Bronx Community Organization
- NYC Department of Health and Mental Hygiene

Learn More:

<https://archinect.com/georine.pierre/project/the-refreshing-waters>



Photo by Dean Kaufman, courtesy Interboro Partners

Heat Exhaustion

ACT FAST

- Move to a cooler area
- Loosen clothing
- Sip cool water
- Seek medical help if symptoms don't improve

Dizziness

Thirst

Heavy Sweating

Nausea

Weakness



Heat Stroke

ACT FAST

CALL 911

- Move person to a cooler area
- Loosen clothing and remove extra layers
- Cool with water or ice

Confusion

Dizziness

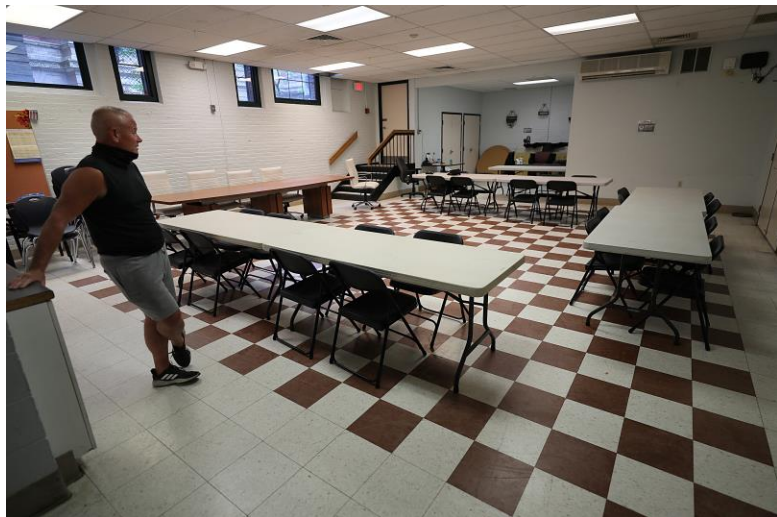
Becomes Unconscious

Heat exhaustion can lead to heat stroke.

Heat stroke can cause death or permanent disability if emergency treatment is not given.

HEAT IN CAMBRIDGE

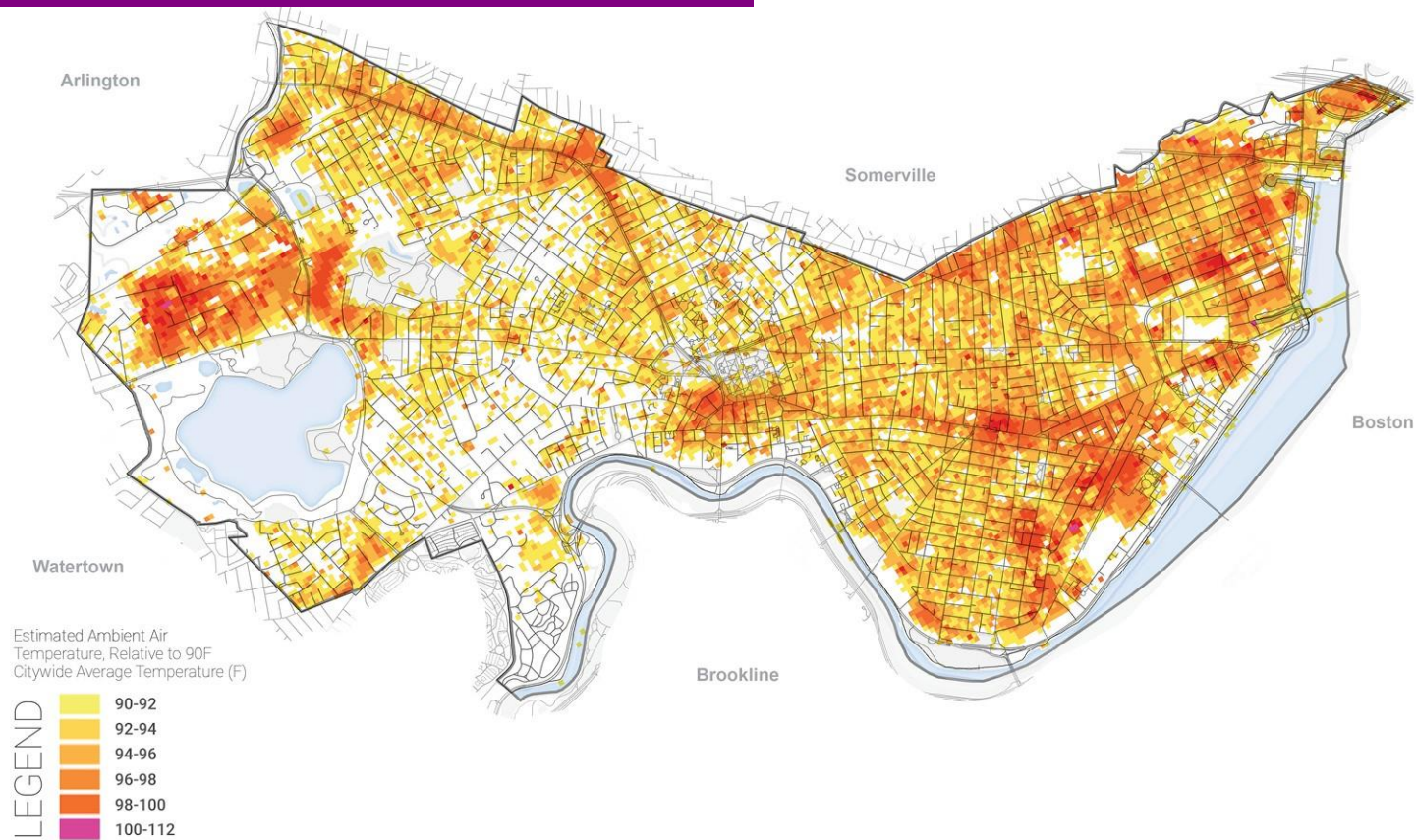
COOLING SHELTERS



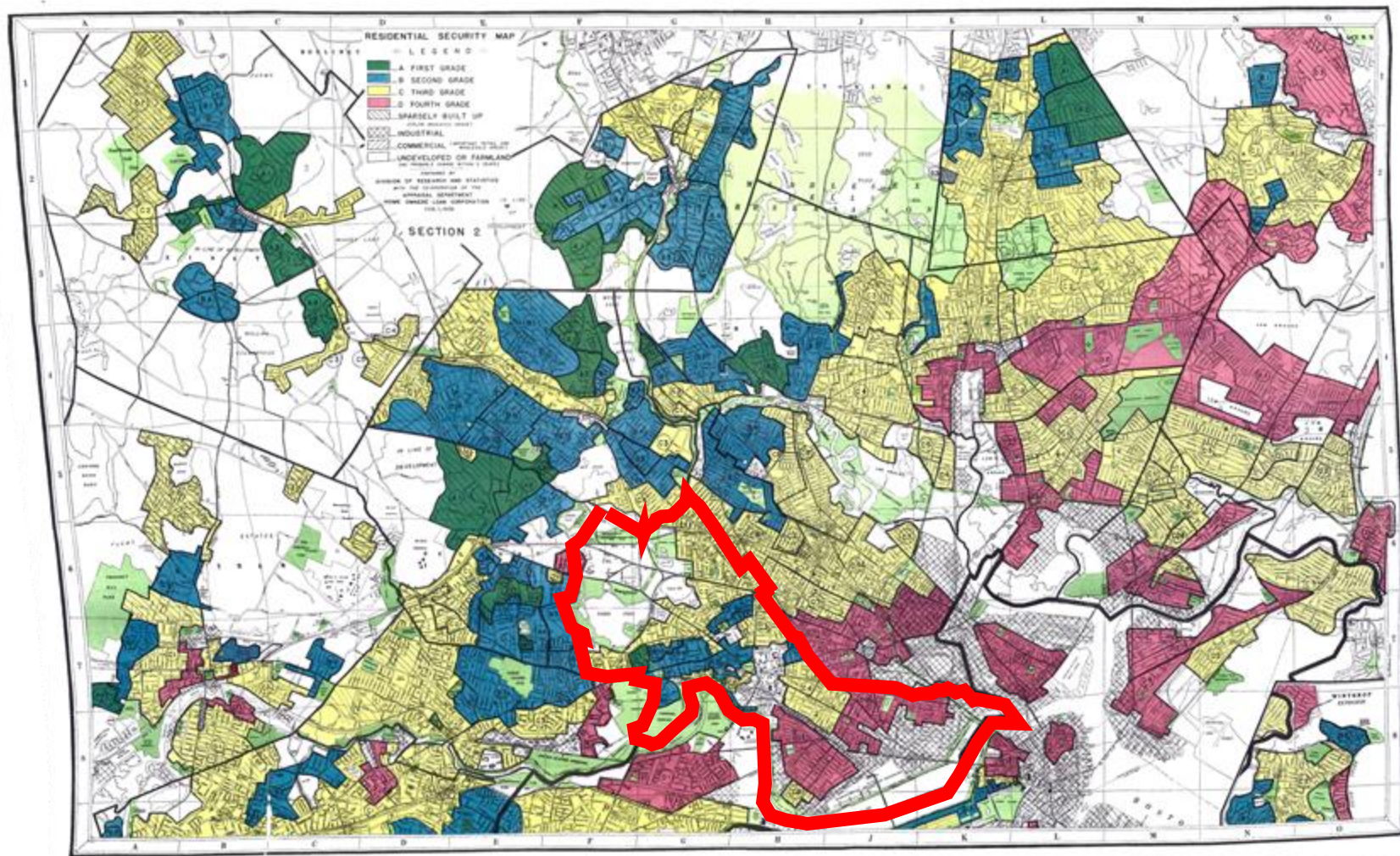
MISTING TENTS



HEAT IN CAMBRIDGE



Source: <https://storymaps.arcgis.com/stories/5907cb7422ad432cae0a6799b41a0745>



SHADE IS SOCIAL JUSTICE

Cooling opportunities in our warming world using the power of design to prompt imagination, community-building, and action

Partially funded by MAPC Accelerating Climate Resilience Grant









Video



buildingways 

buildingways.com



SHADE

**A TEEN LED PLACE
TO CHILL**

during school hours
UPPER SCHOOL ONLY
we appreciate you





Teen Mental Health



Urban Temperatures

past

present

Strategies?

**A Co-created, Programmed, Amplifier
of Teen Health**

Co-created







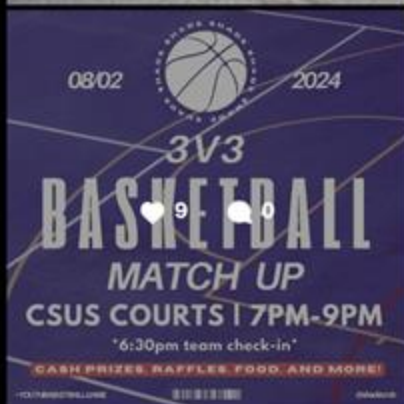
Programmed



Instagram

- Home
- Search
- Explore
- Reels
- Messages
- Notifications
- Create
- Profile

AI Studio



Amplifier

Middle School

Library

Swim

Climb



Hoop

Run

Youth Center



/video/



Teen Health 🖐️

We are SHADE

We are an organization of youth creating a community for teens by teens. Our community is built around a temporary summer place we are creating at Donnelly Field, Cambridge, MA. SHADE is a safe hangout spot for teens to come by, find friends, make new ones, and have a good time. SHADE is made possible through Cambridge's [Shade is Social Justice](#) public art competition.

Why SHADE

We are trying to address the issues of mental health and suicide prevention in our community.

SAMHSA
Substance Abuse and Mental Health
Services Administration

Find Help

Practitioner Training

Public Messages

Grants

Data

Programs

Biden-Harris Administration announces \$68M awarded for suicide prevention

SAMHSA recently awarded \$68 million in grants for suicide prevention and mental health care programs to address the U.S. mental health crisis and prevent suicide.

[Read Announcement](#)



Fundraising Goal

\$23,525 Equipment

\$9300 Programming

\$5000 Swag & Budget Bank

\$6960 June Staff & Rent

\$44,785.50 Total

What's next? 🚀

Experience **vs.**

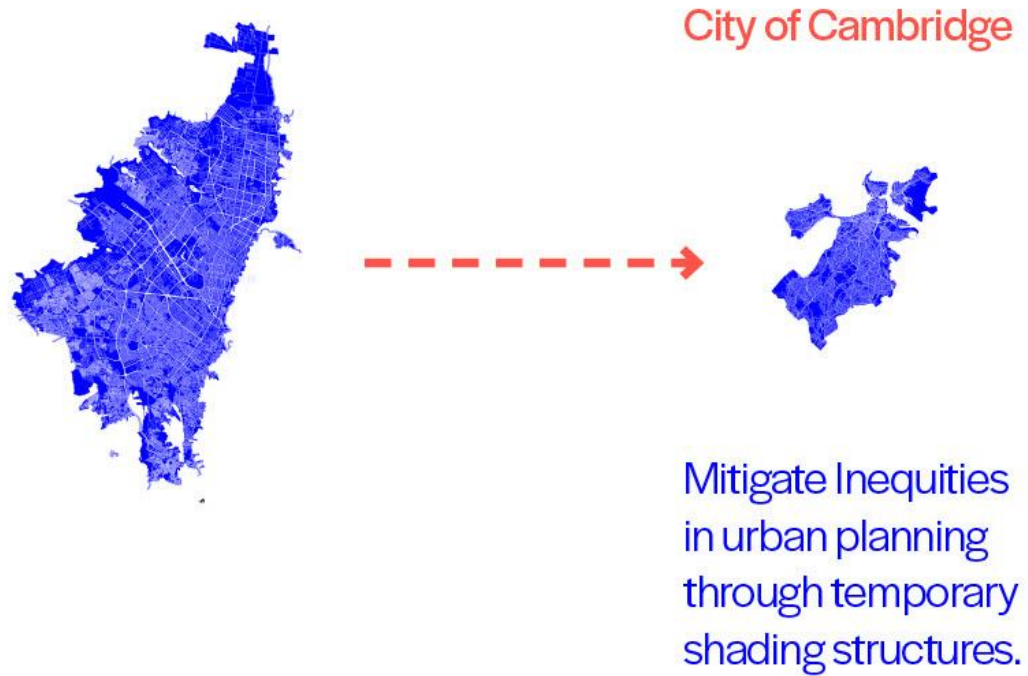


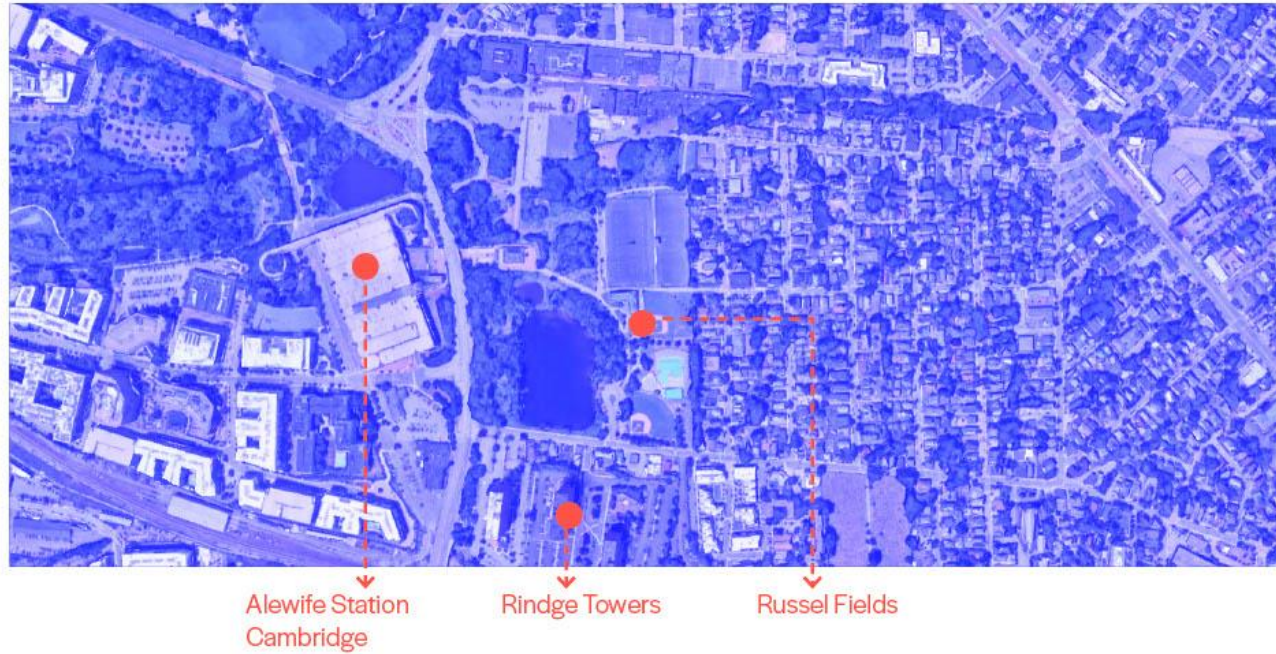
Open for Business













Rindge Towers



Russel Fields



CAMBRIDGE
DEPARTMENT
OF PUBLIC
**THE
WORKS**



Collaboration with them = Design fitting into an ongoing initiative



Plant 1,000 Street Trees Each Year

- Public Works planted over 1100 trees in FY22.
- Created three new positions to plant trees in-house
- Continue to expand capacity, with 7 Certified Arborists on staff.

CAMBRIDGE
DEPARTMENT
OF PUBLIC
**THE
WORKS**



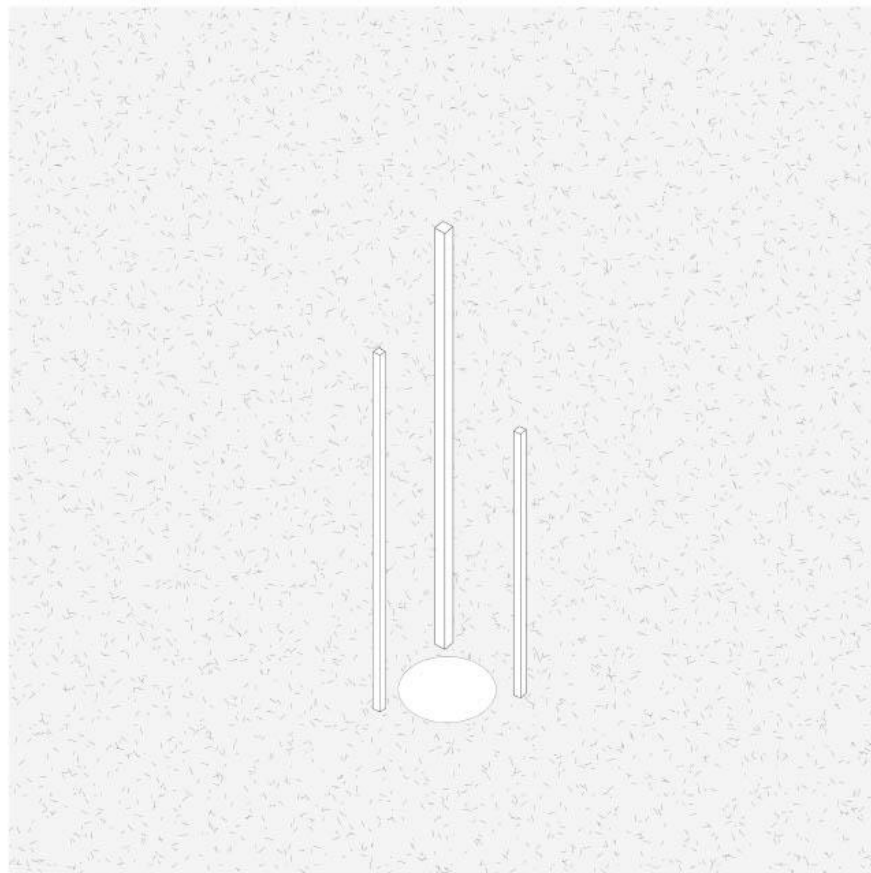
CITY OF CAMBRIDGE

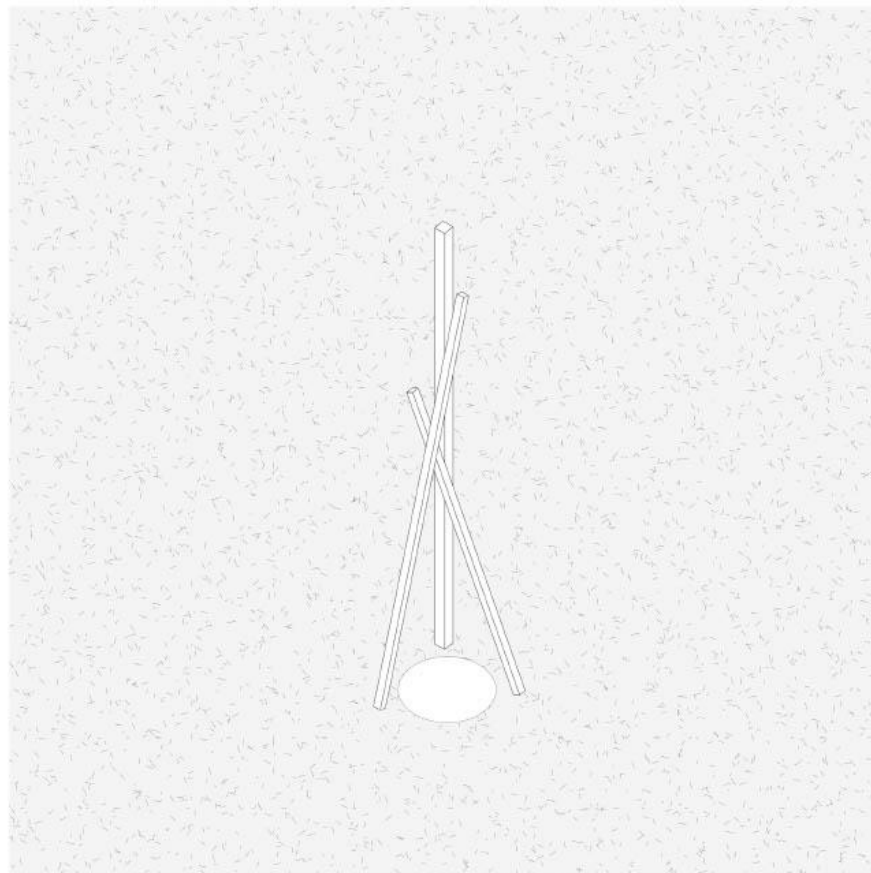


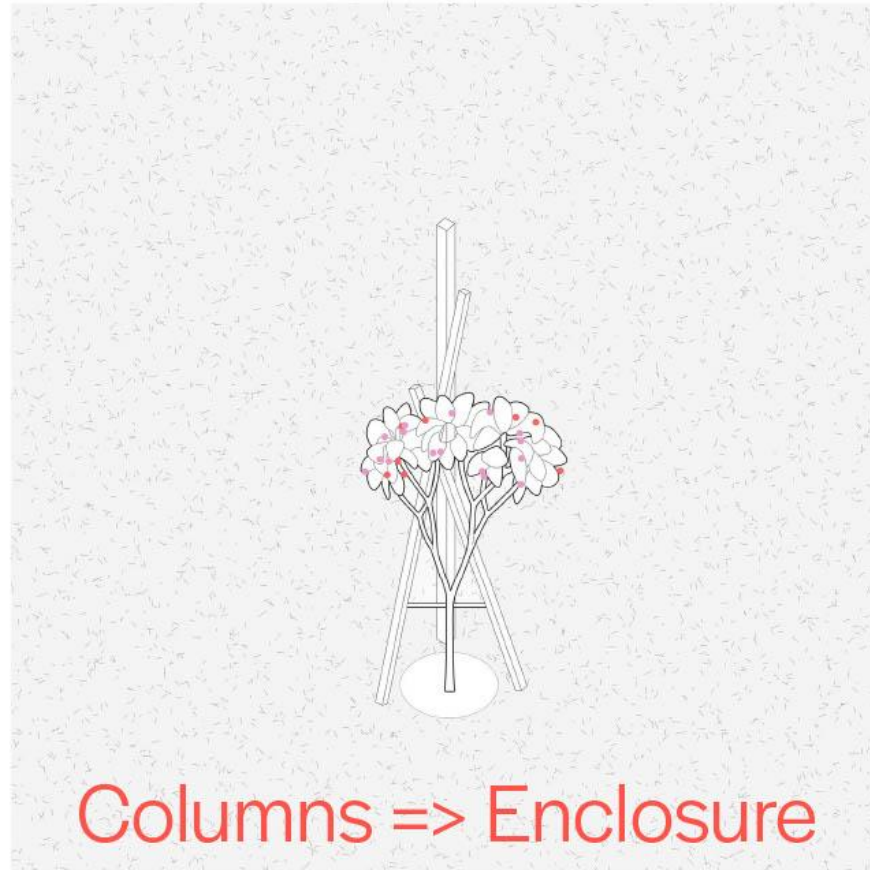
Ephemeral infrastructure for saplings/ burlap trees

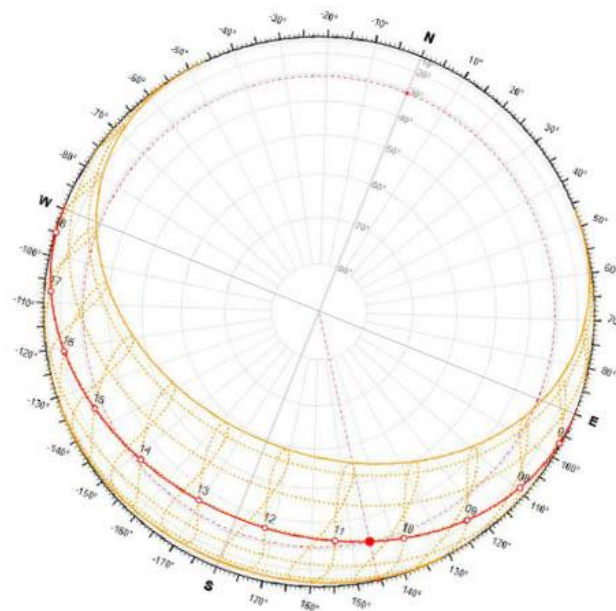


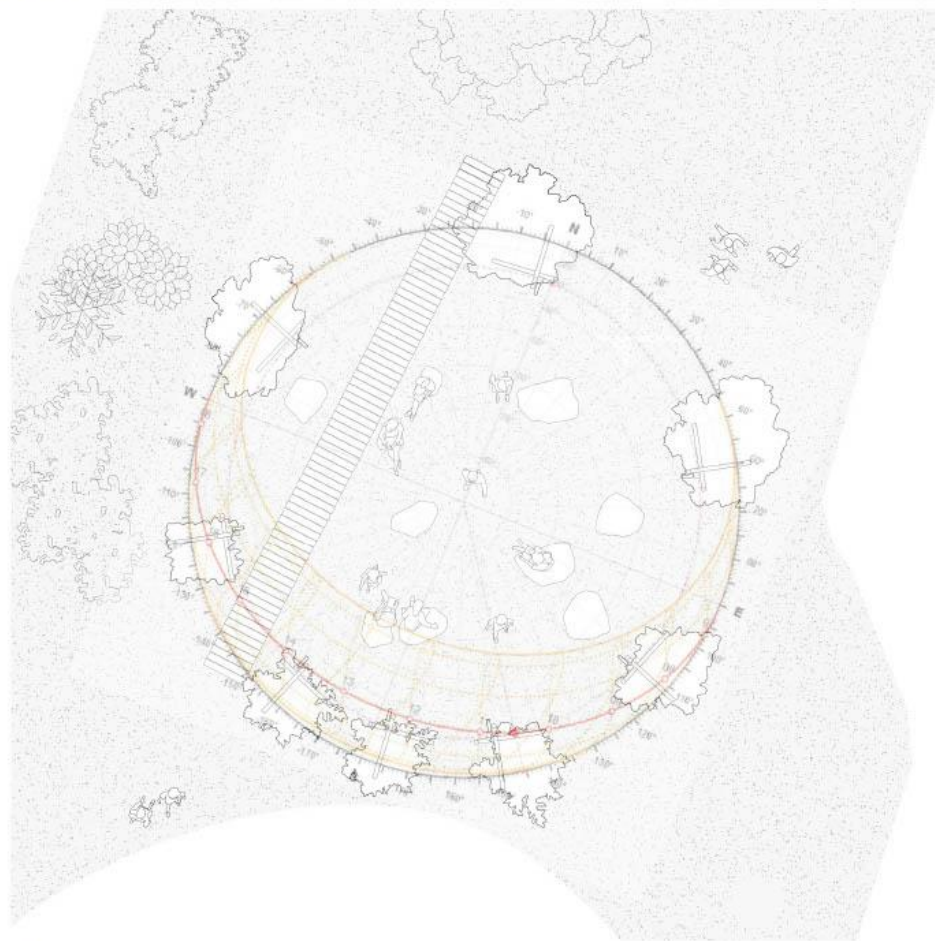
embellishing into architecture?

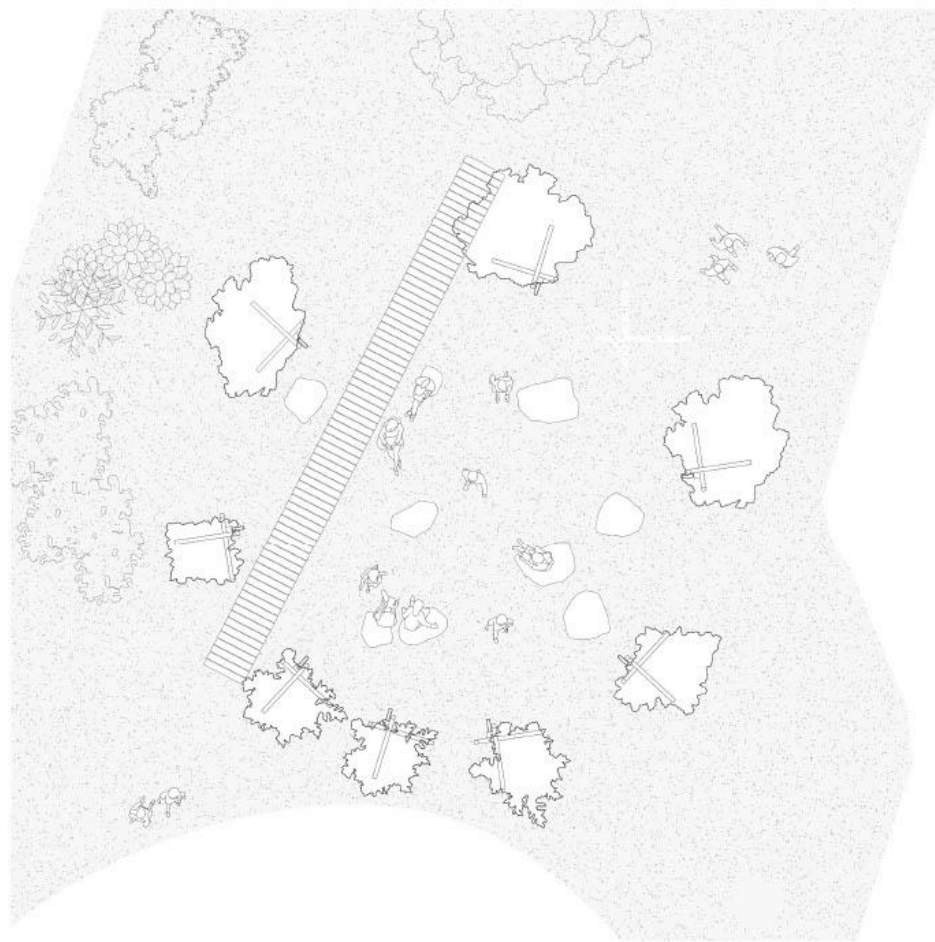


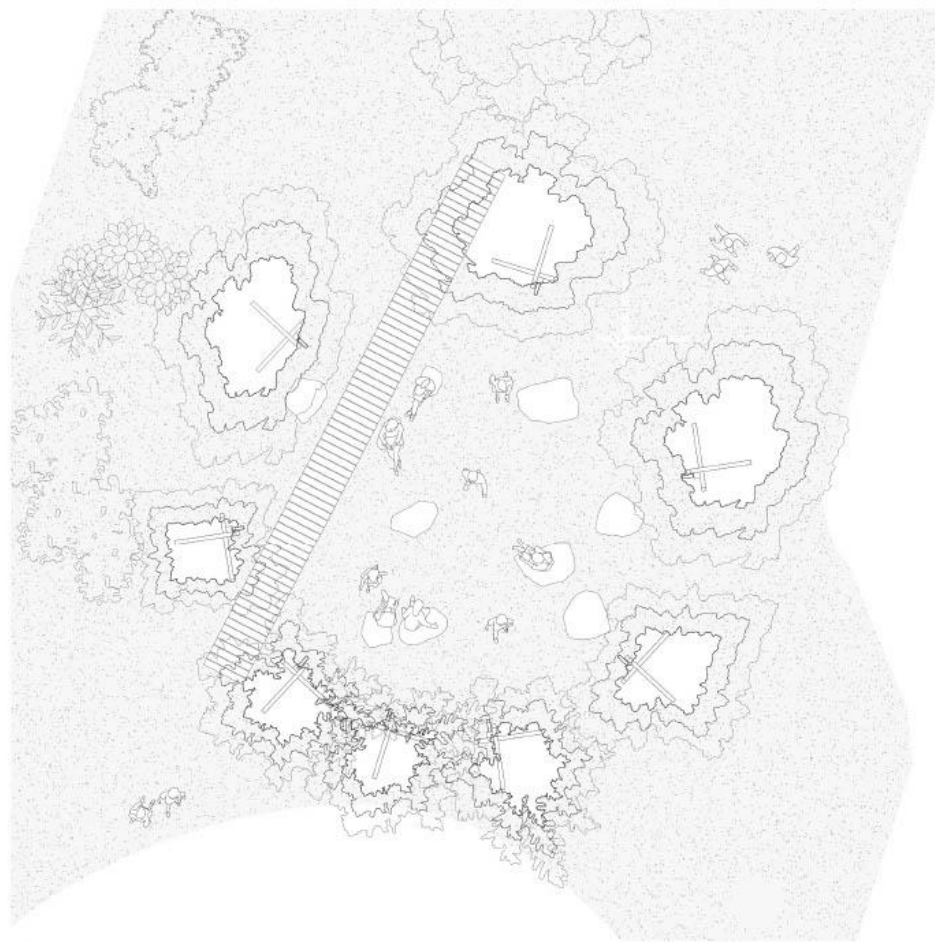


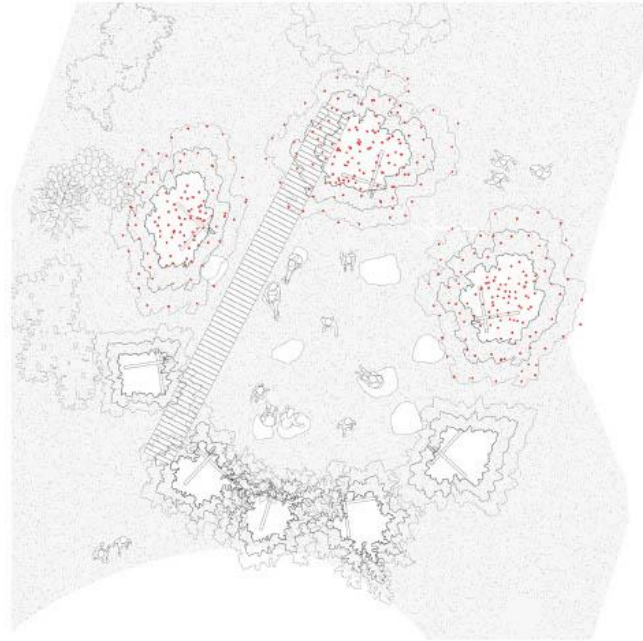




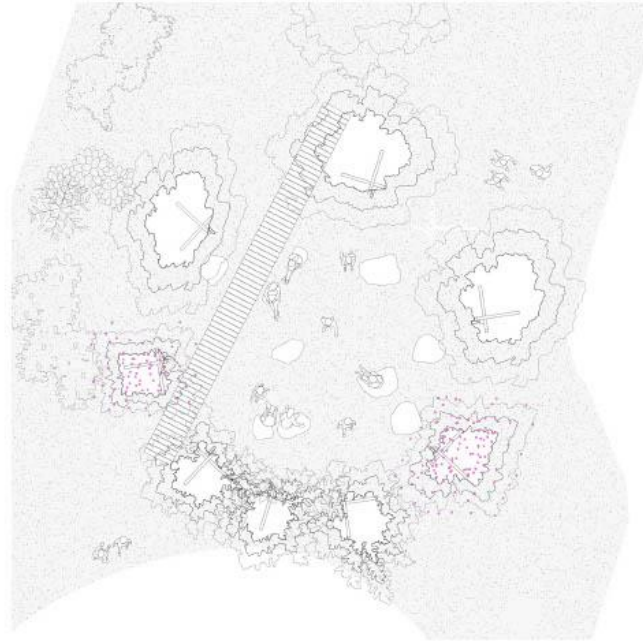




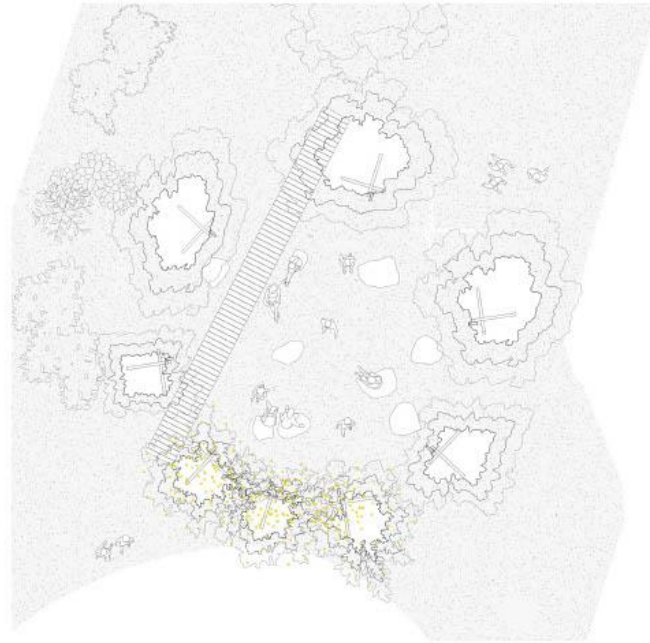




3x red maple
H=40-60
W=35-45



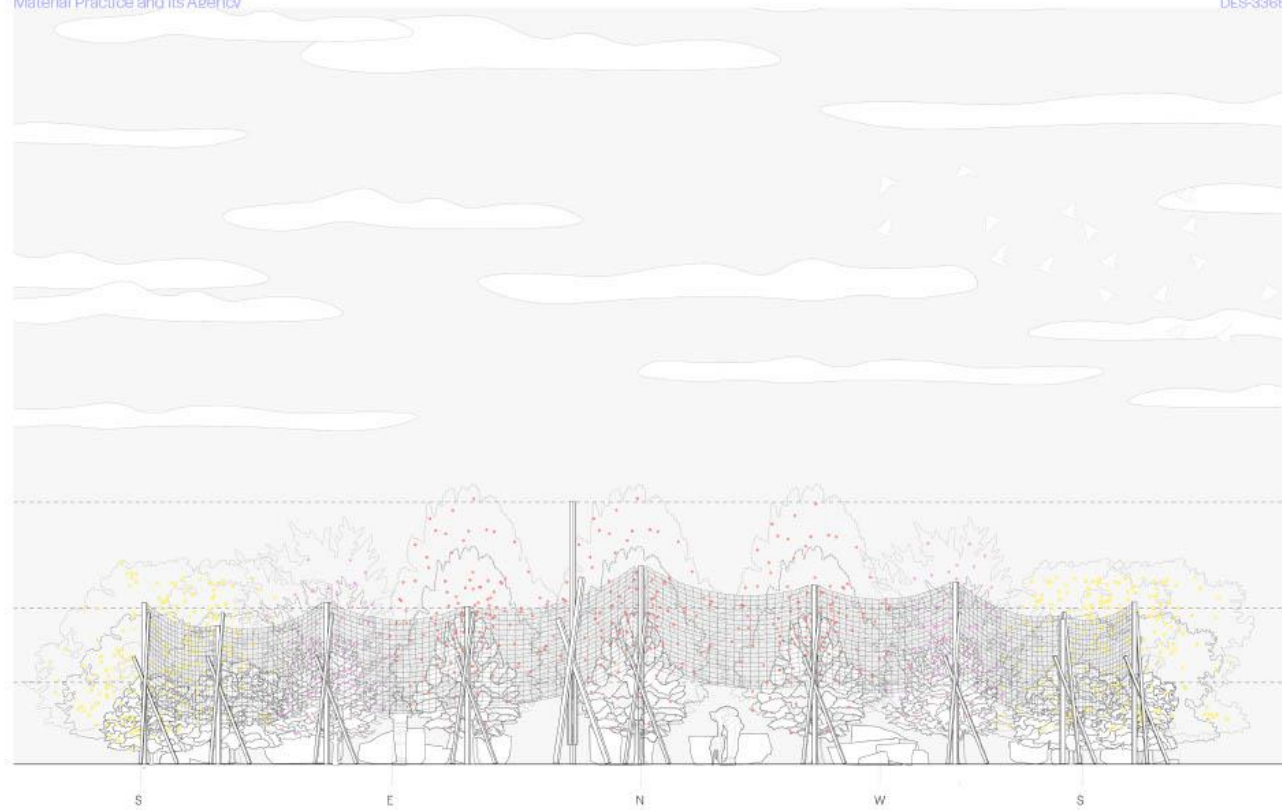
X2 Eastern
Redbud
H=20-30
W=25-35



x3 Japanese
tree lilac
H=20-30
W=15-25



While the trees grow?



















ARCH7130

NU-CAMD



ig: @alsar_atelier

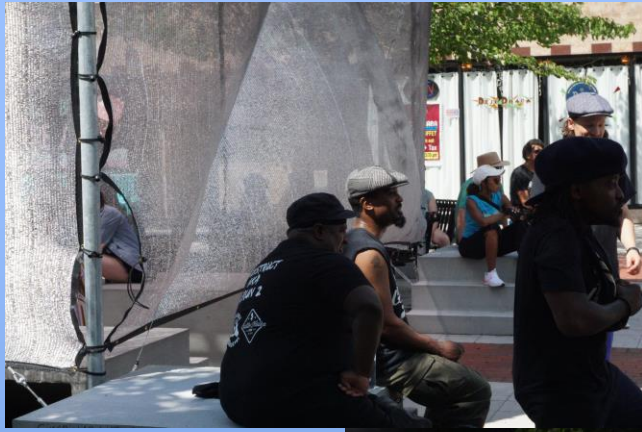
Thank you



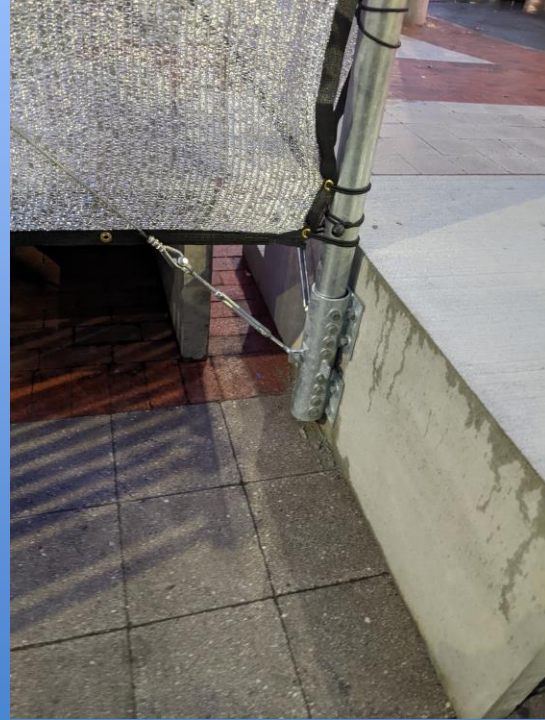
SUN BLOCK

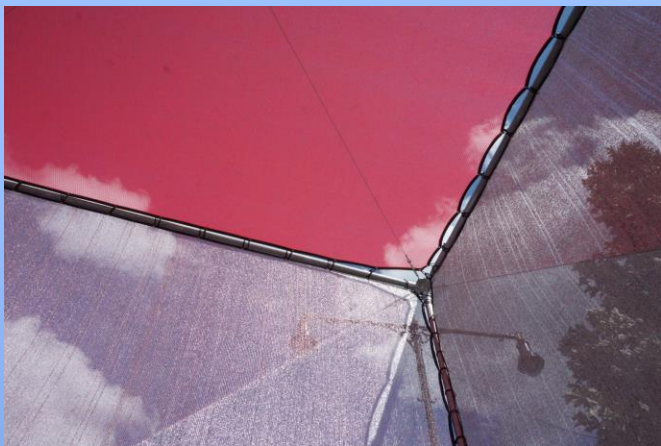
Gabriel Cira

Matthew Okazaki

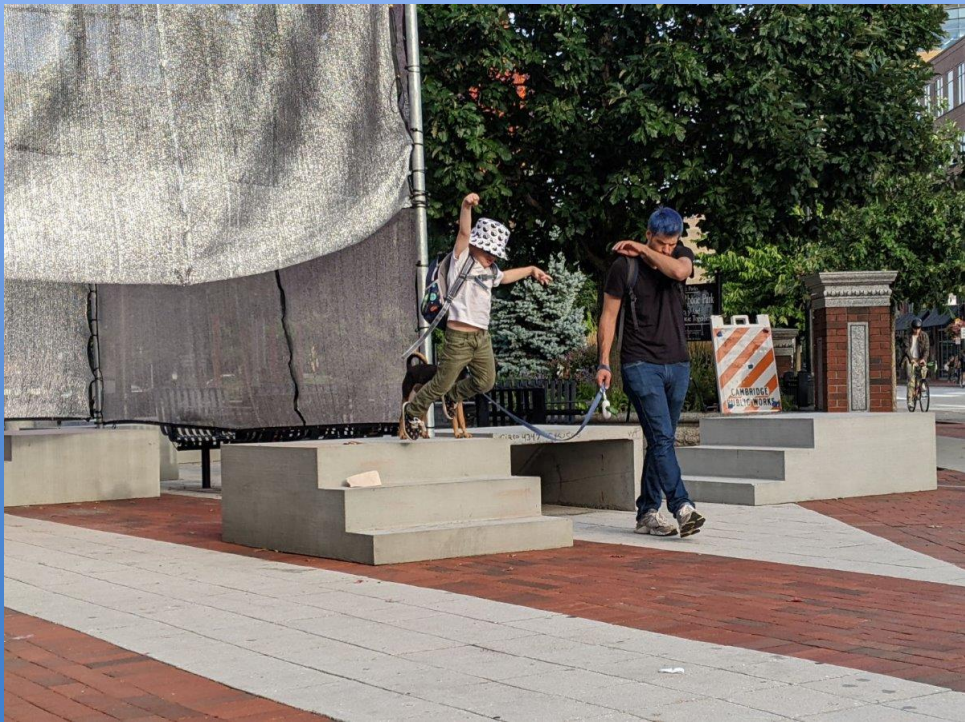


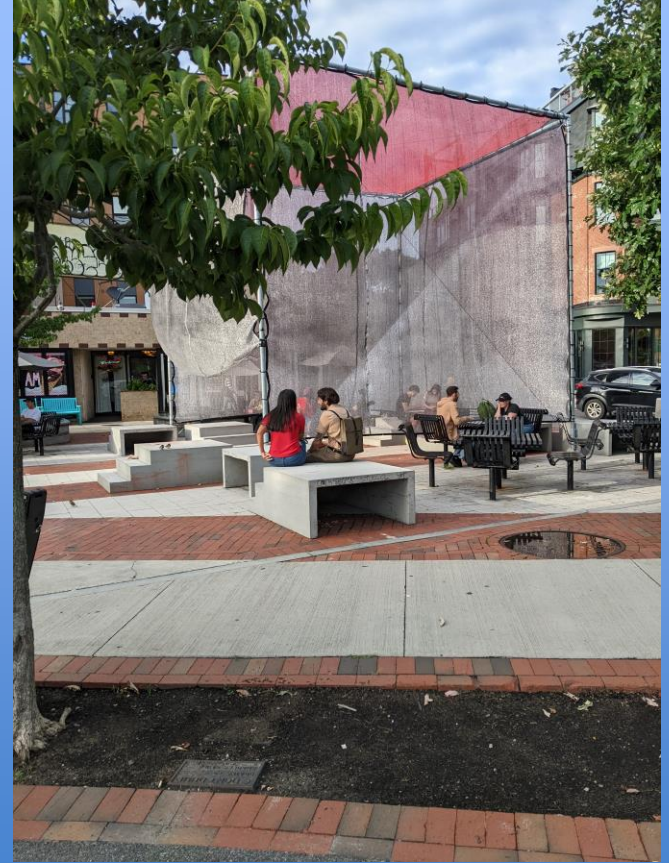


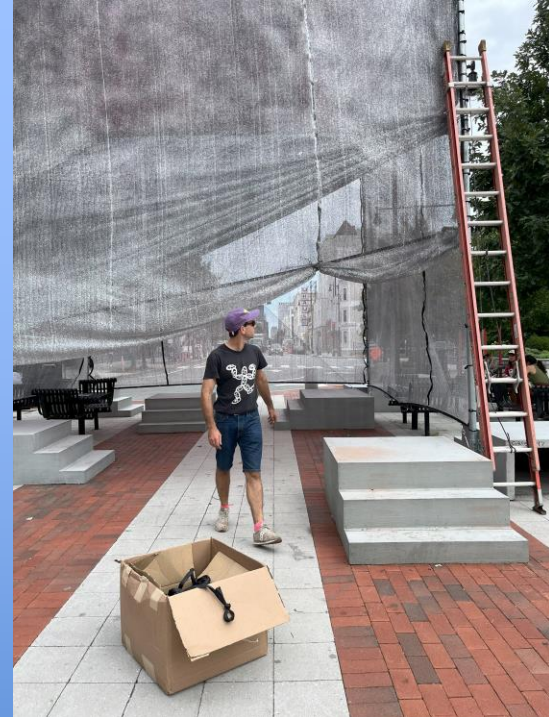
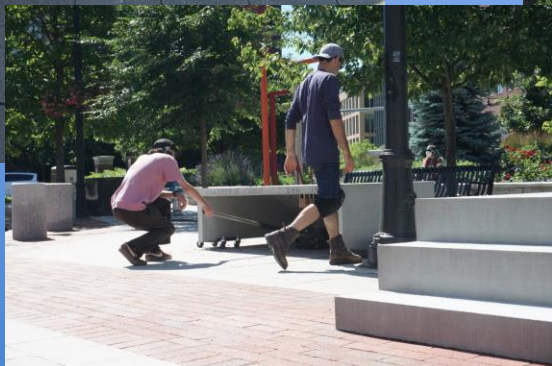




















Accelerating Climate Resilience Speaker Series

Thanks for joining!

Stay tuned for more climate resilience webinars throughout the year! Please provide feedback for future topics!

<https://mapc.ma/ACRFeedbackForm>

