



# MILFORD

## Comprehensive Plan **2024**

---

**Ad Hoc Committee Meeting #7**

October 15, 2024



# Agenda

---

**Fall Community Engagement**

**Community Survey #2**

**Topic discussion: Community**

**Facilities and Services**

**Next steps**



# Milford Comp Plan Ad Hoc Committee

**Joseph Calagione**, Planning Board

**Marble Mainini**, Planning Board

**Jose Morais**, Planning Board

**Paul Mazzuchelli**, Select Board

**Brant Hornberger**, Finance Committee

**Jeffrey Frederick**, Conservation Commission

**Richard Villani**, Town Administrator

Supported by Larry Dunkin, Town Planner



# Comprehensive Plan Timeline





# Fall Community Engagement

---



# Fall Community Engagement

- Continue to build awareness and engagement in the Comprehensive Plan process
- Gathering feedback on draft vision statement
- Gathering feedback on initial goals for each topic

# Fall Community Conversations

- 10/8 Downtown Block Walk
- 10/15 Adult ESL Program Focus Group (with MVP 2.0)
- **10/18 10:00-12:30 am Library, Granite Room**
- 10/18 Senior Center sign-ups 10:00 am
- 10/29 Youth Council Meeting at Youth Center
- 10/30 10-11:30 am Senior Center
- **10/30 5:30-7:00 pm Library Granite Room**
- 10/30 Small Business Meeting at Chamber of Commerce

# Fall Community Conversations



## MILFORD Comprehensive Plan

### Community Focus Groups

The Town of Milford is seeking input from residents and community members for the Milford Comprehensive Plan.

#### We want to hear from you

- **Thoughts** on housing and neighborhoods, downtown, local businesses, parks and open space, schools and other town facilities and services
- **Concerns and ideas** on ways to address **challenges** within the community more effectively & equitably
- **Gathering your feedback** on a draft **Vision Statement** and draft **topic goals**

#### How you can get involved

Follow the registration links if you want to participate in our **Community Focus Groups**.

During these 90-minute sessions we will cover what a "**Comprehensive Plan**" is, the **topic areas** that make up the plan, and give you time to **ask questions** and share your **experiences** and **ideas**.

#### REGISTER HERE

To register scan the QR code or visit  
<https://mapc.ma/MilfordCFFocusGroup>



#### WHEN & WHERE

**Milford Library** (Granite Room)  
80 Spruce St

**Friday, October 18, 2024**  
10:00-12:30 pm

**Wednesday, October 30, 2024**  
5:30-7:00 pm



For more information, visit the project website: [mapc.ma/MilfordCompPlan](https://mapc.ma/MilfordCompPlan)



**Milford Comprehensive Plan**  
Ad Hoc Committee Meeting October 15, 2024



# Fall Community Meetings

- Host a Spanish- and Brazilian Portuguese-speaking session in-person (November 18<sup>th</sup>, confirming venue)
- Host an English-speaking session via Zoom (November 13<sup>th</sup>)



## Community Survey #2

---



# Community Survey #2

- Seeking feedback on draft vision statement and draft topic goals
- Help with outreach and promotion of survey
- Online link and QR code

# Community Survey #2

- Draft Vision Statement – shared in (4) paragraphs, request for feedback on each paragraph
- Draft Vision Statement – how close is this vision statement to your ideal version?
- Draft Goals – shared by topic, request for feedback on topics where participants have interest

# Community Survey #2

<https://bit.ly/milford-plan24-survey2>





## Topic discussion: Community Facilities and Services

---



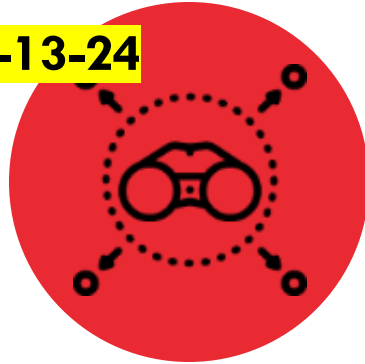
# Plan Topics Discussed

4-2-24



Community  
Engagement

8-13-24



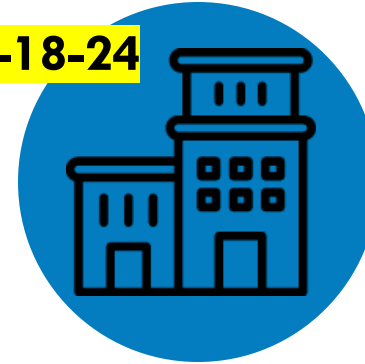
Values, Vision,  
and Goals

8-13-24



Land Use

6-18-24



Downtown

6-18-24



Economic  
Development

9-17-24



Housing

5-21-24



Transportation,  
Circulation, and Transit



Cultural and  
Historical Resources



Natural Environment  
and Open Space



Community Services  
and Facilities

# Plan Topics



**Community  
Engagement**



**Values, Vision,  
and Goals**



**Land Use**



**Downtown**



**Economic  
Development**



**Housing**



**Transportation,  
Circulation, and Transit**



**Cultural and  
Historical Resources**



**Natural Environment  
and Open Space**



**Community Services  
and Facilities**





# Community Services and Facilities in Milford

- The Town of Milford has approximately 1,600 employees, who report to 26 department heads, as well as 28 elected and appointed boards, commissions, and committees, and 9 additional elected officials.
- Major Town Facilities include Town Hall, Memorial Hall, the Town Library, the Police Station, the Spruce Street and Birch Street Fire Stations, the Youth Center, Senior Center, the Vernon Grove and North Purchase Street Cemeteries, the Wastewater Treatment Plant, and the Transfer Recycle Station



# Community Services and Facilities in Milford - Library

- Built in 1986, renovated 2007-2008. Collection of 1,646,038 items, served 75,000 patrons in 2022, open 65 hours per week. Serves as regional library for nearby towns.
- 22 Full Time Equivalent Staff, 2 librarians, 6 associate librarians, 3 supervisors, director. Governed by Board of Trustees. Dependent heavily on volunteers to run programs.
- Dedicated ESL classroom, two community rooms which hold 200 people. Hosts two beginner and one intermediate English classes which are in high demand.
- Developing next 5 year strategic plan. Recent focus on downsizing physical collection and improving study/work spaces.



# Community Services and Facilities in Milford – Senior & Youth

- Senior Center opened 2003, serves nearly 700 out of Milford's 7,300 seniors each month through classes, prepared meals, the SHINE Program, and local AARP affiliate. The Newsletter reaches 3000 households.
- Senior Center Van provides medical and other in-town transit, and the Center connect seniors to out of town medical transit to Boston and Worcester.
- 2 Full Time Staff, 5 part time positions, one social worker, with plans for full time program coordinator. Onsite nurse twice per week.
- Youth Center opened in 1998, \$5 million renovation funded by Town in 2016, grant funding in place for remaining media center work.
- Free afterschool program serves 630 youth with 140 daily participants. Low-cost summer day camp for 100 families. Two food pantry programs, winter walking hours for seniors, and rent space.
- 3 Full Time Staff, 4 part time, largely dependent on volunteers. Hear need for full time front desk staff member.



# Community Services and Facilities in Milford – Public Schools

- Six Schools, 354 teachers, 700 employees serve 4,413 students. Student to teacher ratio 12.5 to 1, slightly above state average.
- 1,600 English Language Learners and 170 bilingual staff. Number of ESL students has increased fivefold over last decade.
- FY 24 budget \$75.4 million with \$46.8 million in state Chapter 70 funding. Rising costs combined with loss of Covid funds are a concern, no cuts in programming or staff yet.
- Milford High School-built 1971, in need of renovation or rebuilding. Identified as top infrastructure priority for School District
- Successful application to Massachusetts School Building Authority this year.
- School Building Committee overseeing feasibility study.

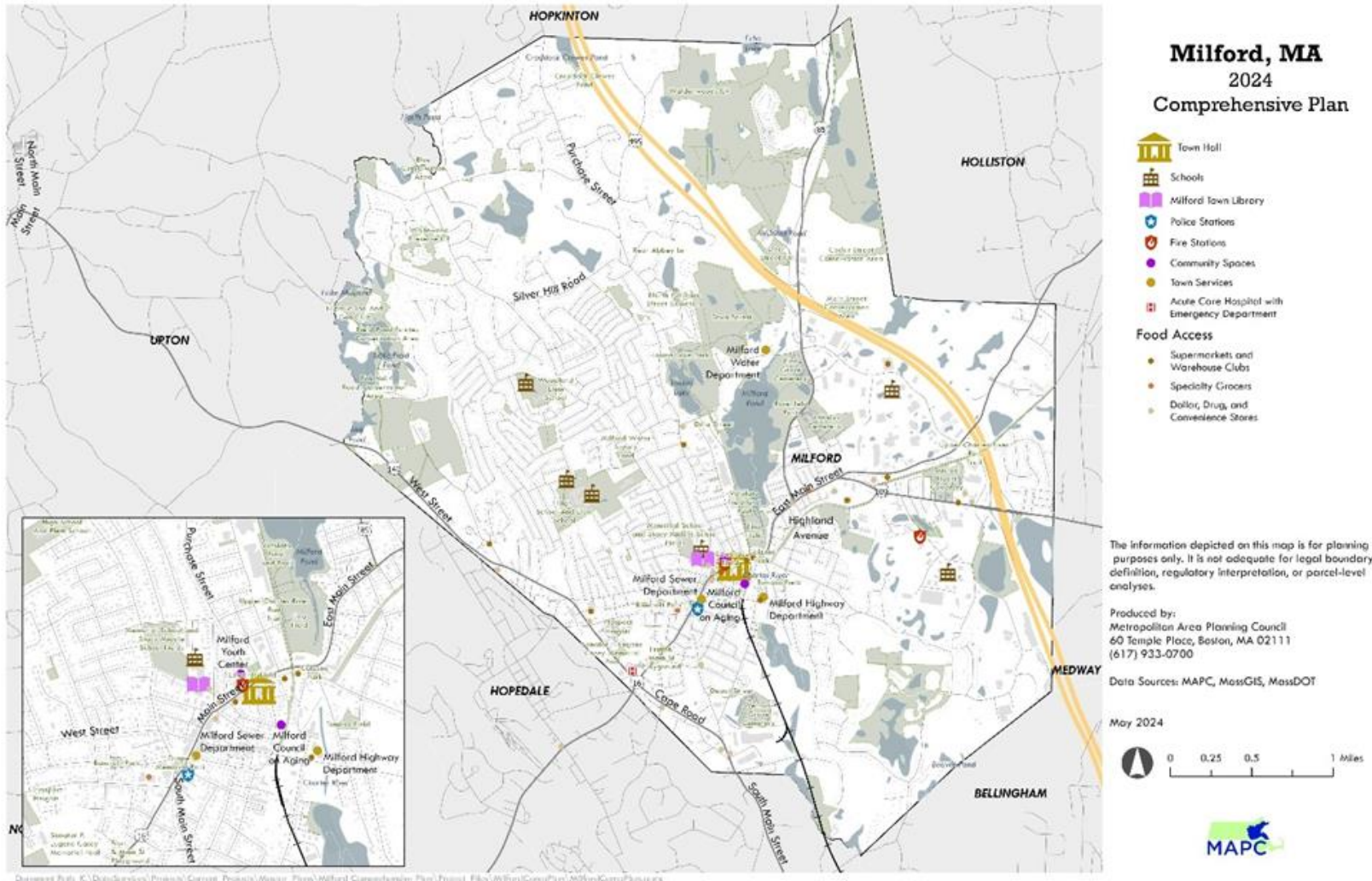


## Community Services and Facilities in Milford – Public Safety

- The Milford Police Department consists of 50 sworn officers, 9 civilian dispatchers, and two administrative assistants. In 2022, the Department responded to 54,503 calls for service, a significant increase from the 32,837 calls in 2021, and 28,502 calls in 2020.
- The Milford Fire Department consists of 45 uniformed personnel operating out of two fire stations. The Department responded to 5,933 calls for service in 2022.



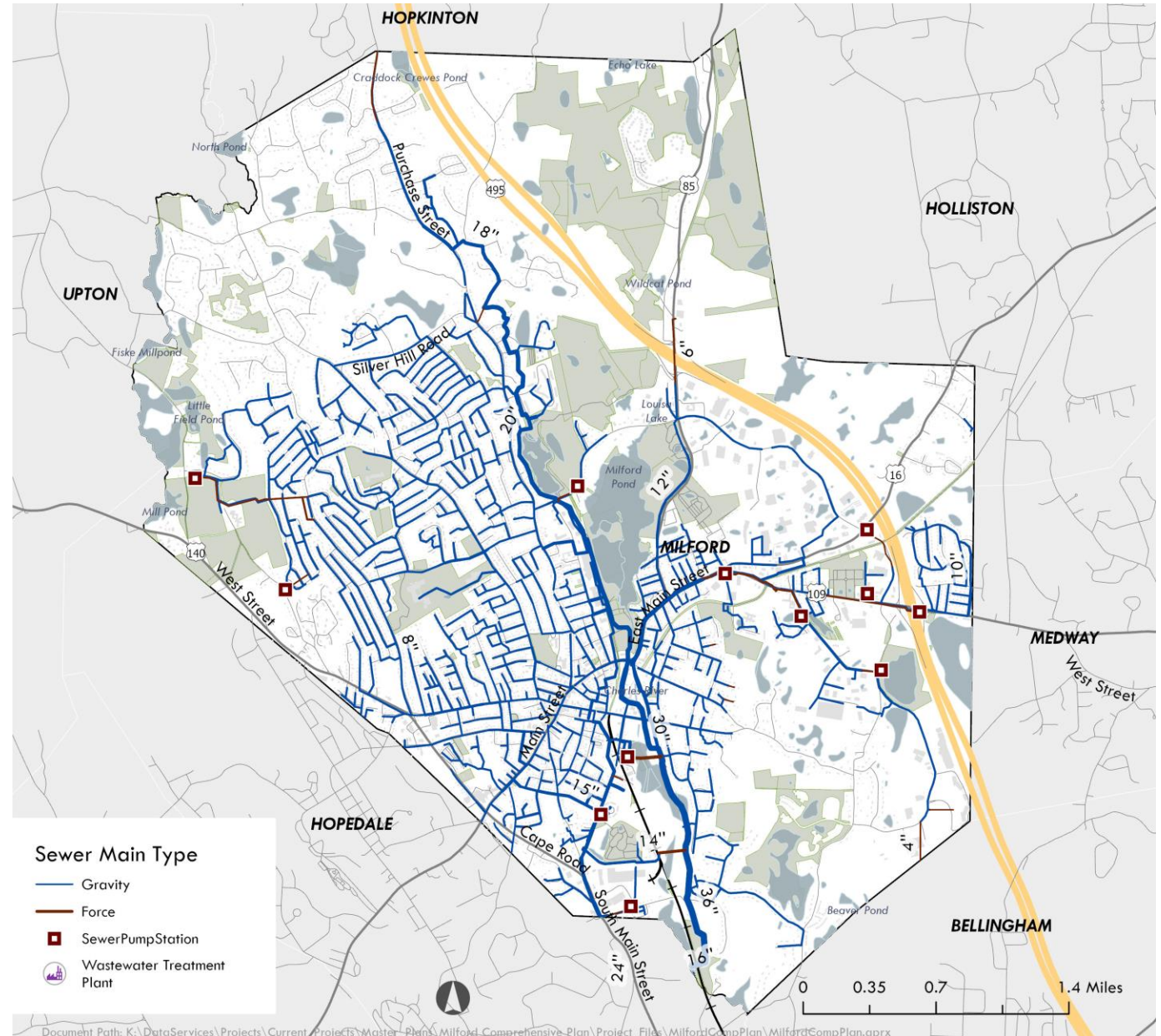
# Community Services and Facilities in Milford







# Community Services and Facilities in Milford – Water/Sewer





# Community Services and Facilities in Milford – Water

- Sewer Department manages system that serves 95% of residents and businesses.
- 60 miles of sewer pipe, ten pump stations, Wastewater Treatment Plant in Hopedale.
- Treatment Plant upgraded 1986, 4 million gallon per day capacity.
- Over 50% of sewer pipes pre-1950, many deteriorating. Infiltration and overflow issues.
- Stormwater treated separately, managed by Highway Department.
- Noted interest in hiring Stormwater Engineer and possibly creating new department/utility.
- Recent focus on Green Stormwater Infrastructure Projects
- Town must meet requirements of Ms4 Permit.





# Community Services and Facilities in Milford – Transportation

- 240 miles of paved roadway, 22 signalized intersections, nearly all fixed time.
- Have heard need to upgrade signals, particularly through the downtown corridor.
- Improving street/sidewalk conditions also identified as priority.
- Highway Department leads street and sidewalk maintenance, in 2022 installed/replaced 1,800 feet of curb, 2,000 feet of sidewalk, 16,000 feet of berm, 49 streets and parking lots were resealed, 15 ADA accessible curb ramps.
- Most recent publicly available Pavement Conditions Index Map from 1995.



# Community Services and Facilities Challenges in Milford

- Growing need to increase language accessibility for students and all residents
- Facilities needs include space limitations at Town Hall, and renovating or rebuilding the High School
- Infrastructure needs include addressing aging sewer and stormwater systems, addressing traffic and transportation needs
- Need for an updated Capital Improvement Plan and Process
- Rising costs to maintain quality of service



# Community Services and Facilities in Milford - Goals

- Improve and Update Capital Improvement Processes and Practices
- Continue to Evaluate Current Department Structures and Organization for Efficient Delivery of Services
- Continue to Improve Inclusivity and Equitable Access to Town Services
- Continue to Improve Environmental Sustainability and Resiliency for Town Facilities, Services, and Residents
- Continue to Plan for Long-Term Financial Resiliency and Sustainability



# Community Services and Facilities in Milford

- What strikes you about this information?
- What areas should we focus on as we continue our analysis of community services and facilities in Milford?
- What else should be a part of the long-term vision and goals for Milford's Community Services and Facilities?



## Next steps

---



# Project website

**Stay involved!**

Sign up for the **email list**:  
[mapc.ma/milford-plan24](https://mapc.ma/milford-plan24)









**Learn more!**

Visit the **plan website**:  
<https://mapc.ma/MilfordCompPlan>



# Key Milestones

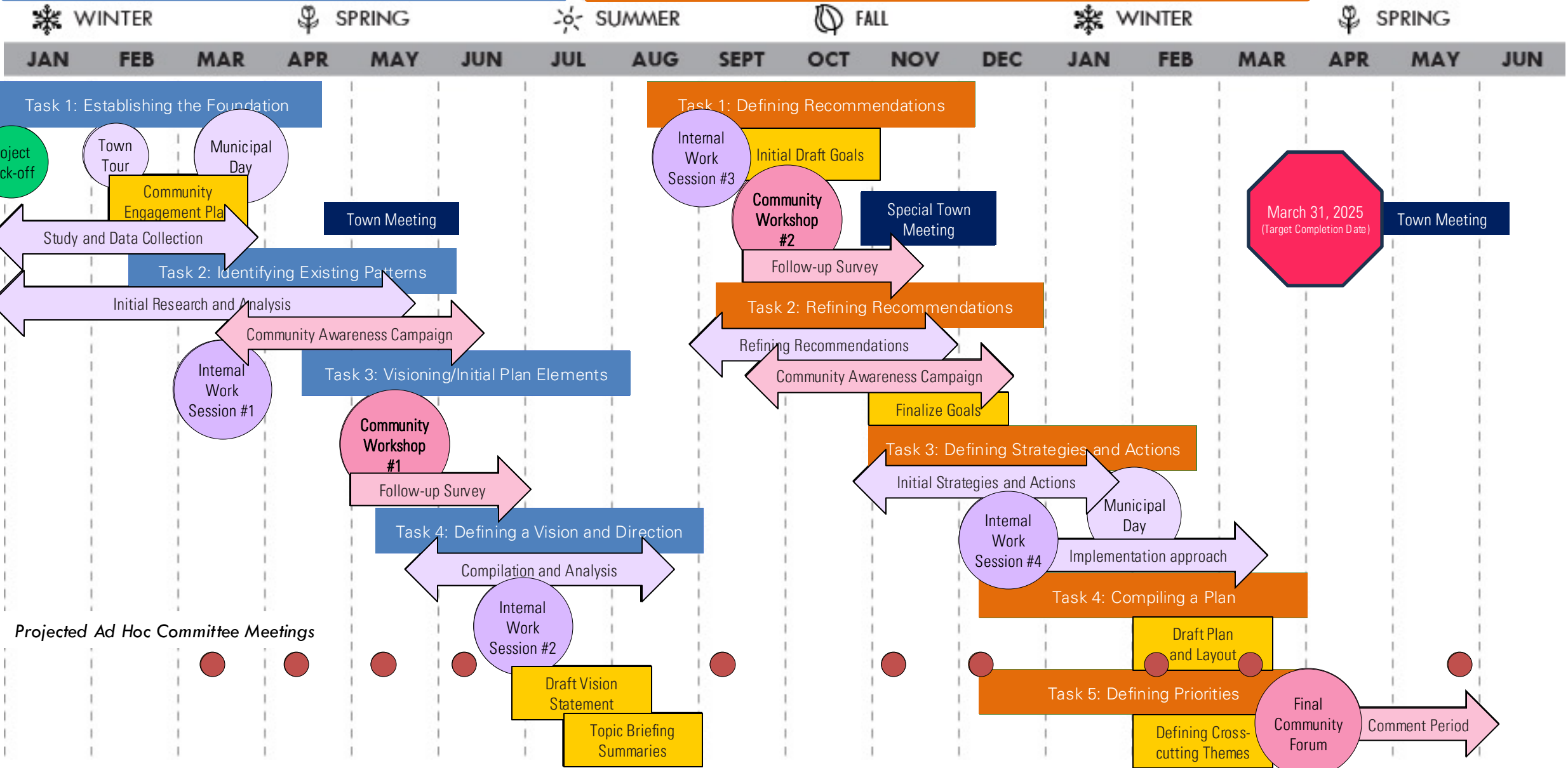
PHASE 1	2024	Winter 	Project Kick-off
			Town Tour
			Municipal Interviews
		Spring 	Community Meeting #1 (Visioning Workshop)
			Community Survey #1
			Community-Based Organization Interviews
		Summer 	Community Values and Vision
			Data Collection and Analysis
			<b>Existing Conditions Topic Summaries</b>
			Assets, Challenges, Opportunities
PHASE 2		Fall 	Preliminary Draft Goals
			Community Workshop #2 (Feedback on Goals)
			Community Survey #2
			Refining and Finalizing Goals
			Preliminary Strategies and Actions
	2025	Winter 	Municipal Review Meetings
			Implementation Approach
			Final Community Meeting
		Spring 	Draft Plan and Public Comment Period
			Final Plan
			Plan Adoption (Planning Board)

2024

2025

PHASE 1: EXISTING CONDITIONS ANALYSIS AND VISIONING

PHASE 2: GOAL SETTING AND IMPLEMENTATION PLAN





## Next steps

- Continuing to refine initial goals
- Developing initial strategies
- Gather feedback on draft Vision Statement
- **Next Ad Hoc Committee Meeting –  
November 5th  
7:00 pm  
Topic Discussion: Historical and Cultural Resources**