



MILFORD

Comprehensive Plan **2024**

Community Meeting

November 18, 2024





Welcome and introductions



Agenda

Welcome and Introductions

Comprehensive Plan overview

What We've Heard/Draft Vision

Initial Draft Goals

Next steps

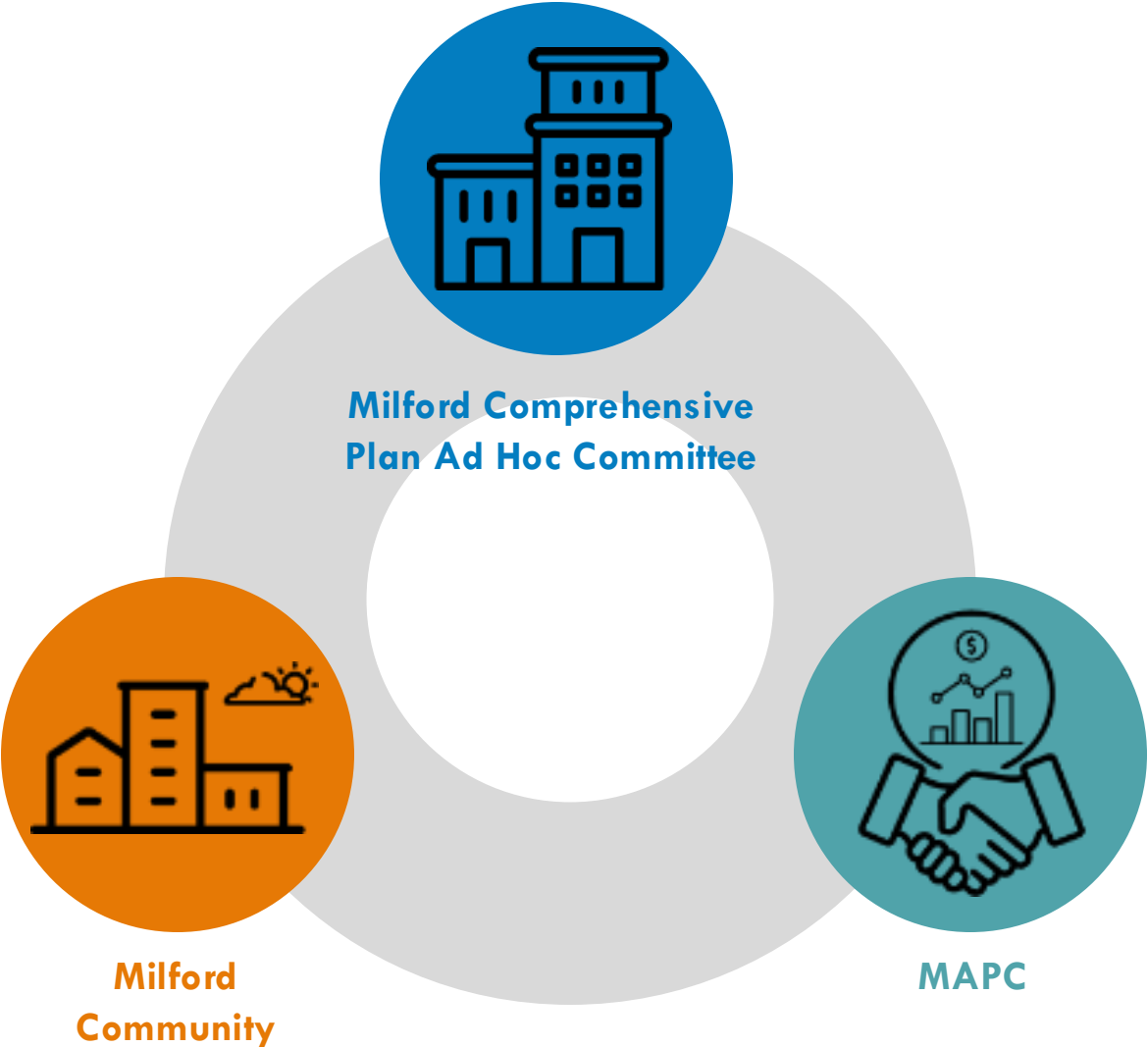


Milford Comprehensive Plan
Community Meeting November 18, 2024

Community Meeting purpose

- Second Town-wide community meeting of the process
- Focus of the meeting:
 - Introduce Comprehensive Plan process
 - Identify challenges to address
 - Gather feedback on a shared vision
- Interactive in-meeting conversation

Who is part of this process



Ad Hoc Comprehensive Plan Committee

Joseph Calagione, Planning Board

Marble Mainini, Planning Board

Jose Morais, Planning Board

Paul Mazzuchelli, Select Board

Christopher Morin, Finance Committee

Jeffrey Frederick, Conservation Commission

Richard Villani, Town Administrator

Supported by Larry Dunkin, Town Planner



MAPC Comprehensive Plan Team



Project Manager
Josh Fiala AIA AICP LEED AP
Vision/Implementation



Project Manager
Courtney Lewis
Land Use/Vision



Javier Gutierrez
Community Engagement



Sasha Parodi
Community Engagement



Najee Nunnally
Community Engagement



Camille Jonlin
Economic Development



Julia Wallerice
Transportation



Adi Nochur
Transportation



Jiwon Park
*Natural Environment
and Open Space*



Sarah Scott
*Cultural and
Historical Resources*



Lindsay Randall
*Cultural and
Historical Resources*



John Cruz
Housing



Brian Luther
*Community
Facilities/Services*



Michael Pearce
*Community
Facilities/Services*



Lily Perkins-High
Data and Analysis



Zoe Iacovino
Data and Analysis

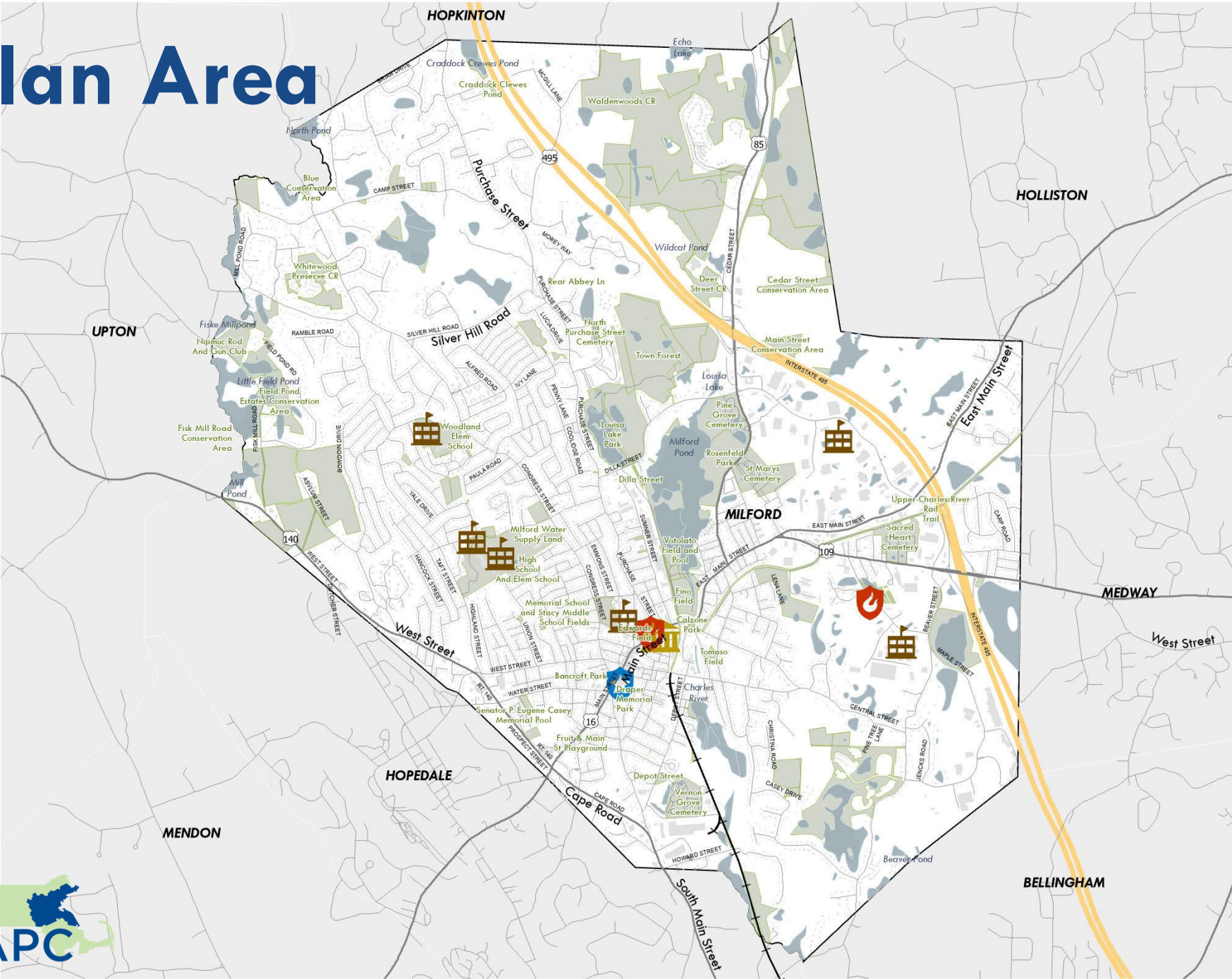




Comprehensive Plan overview



Plan Area



Milford, MA 2024 Comprehensive Plan

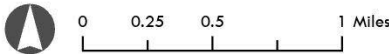
-  Town Hall
-  Schools
-  Police Stations
-  Fire Stations
-  Interstate
-  U.S. Highway
-  State Route
-  Non-numbered route
-  Existing Rail
-  Water Bodies
-  All Milford Open Space

The information depicted on this map is for planning purposes only. It is not adequate for legal boundary definition, regulatory interpretation, or parcel-level analyses.

Produced by:
Metropolitan Area Planning Council
60 Temple Place, Boston, MA 02111
(617) 933-0700

Data Sources: MAPC, MassGIS, MassDOT

April 2024



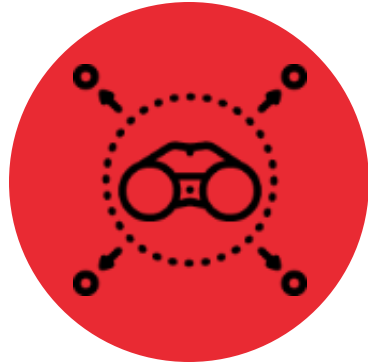
Milford Comprehensive Plan
Community Meeting November 18, 2024



Plan Topics



**Community
Engagement**



**Values, Vision,
and Goals**



Land Use



Downtown



**Economic
Development**



Housing



**Transportation,
Circulation, and Transit**



**Cultural and
Historical Resources**

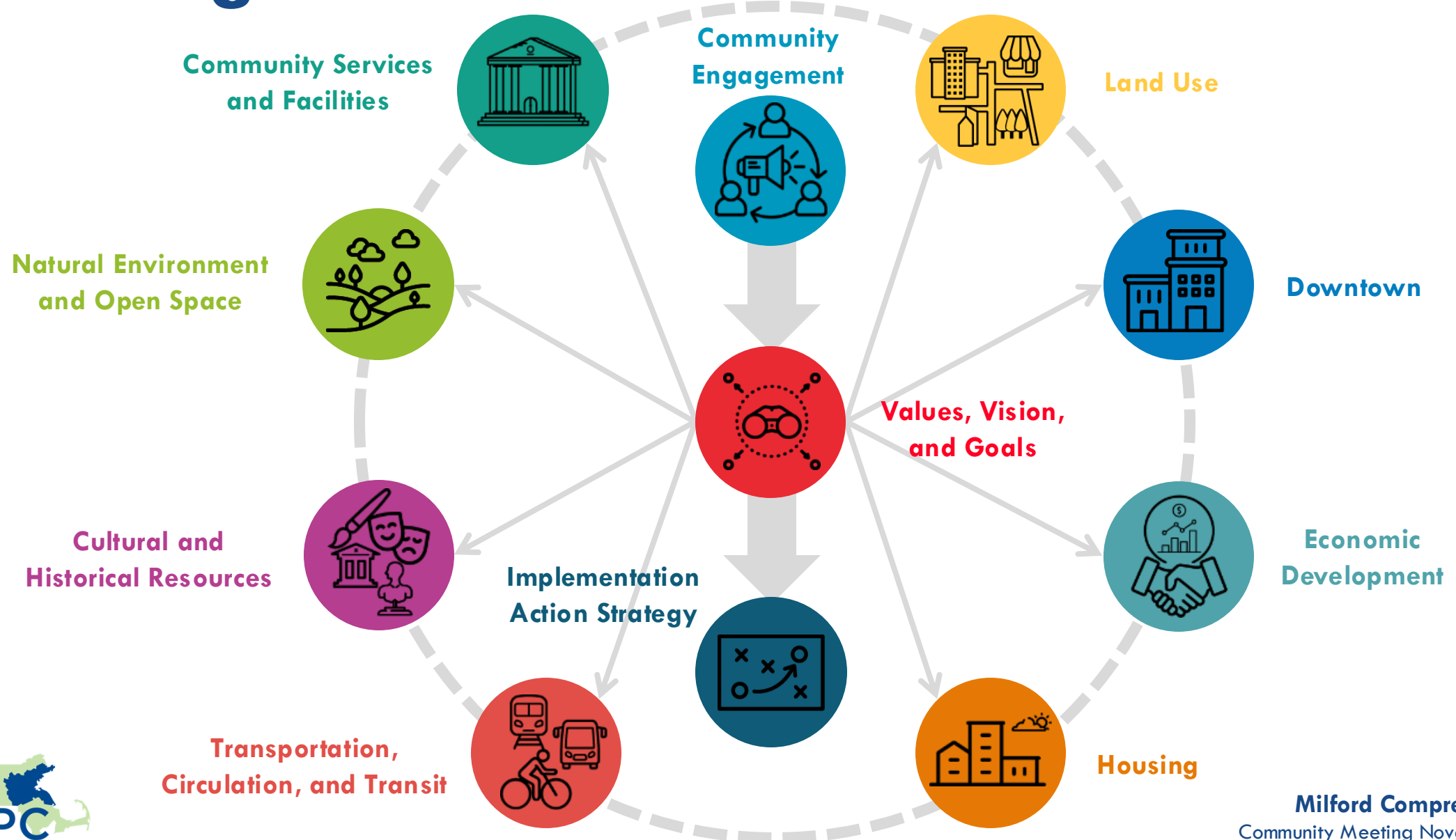


**Natural Environment
and Open Space**



**Community Services
and Facilities**

Plan Organization



Comprehensive Plan Timeline



Municipal Vulnerability Preparedness:

Helping Milford Address Climate Impacts on the Community



MVP Core Principles



Furtheres a community identified priority action to address climate change impacts.



Employs Nature-based solutions (NBS).



Increasing equitable outcomes for Environmental Justice (EJ) and other priority populations and addressing the root causes of social vulnerability.



Achieves broad and multiple community benefits.



Builds community capacity for climate resilience.



Commits to monitoring project success and maintaining the project into the future.



Conducts robust community engagement and supports strong partnerships with EJ and other priority populations.



Utilizes regional solutions for regional benefit.



Utilizes climate change data for a proactive solution.



Pursues innovative, transferable approaches.



What we've heard



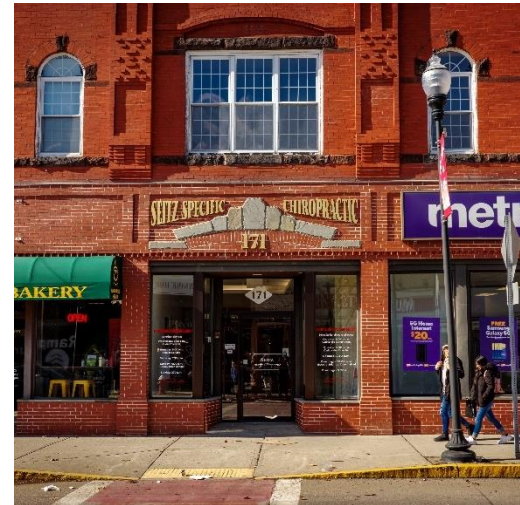
Spring/Summer Community Conversations

- 3/27 and 3/28 Municipal interviews
- 5/13 Community Meeting
- May-July Online Community Survey
- 6/25 Community Based Organization meeting
- August Food Pantry

Fall Community Conversations

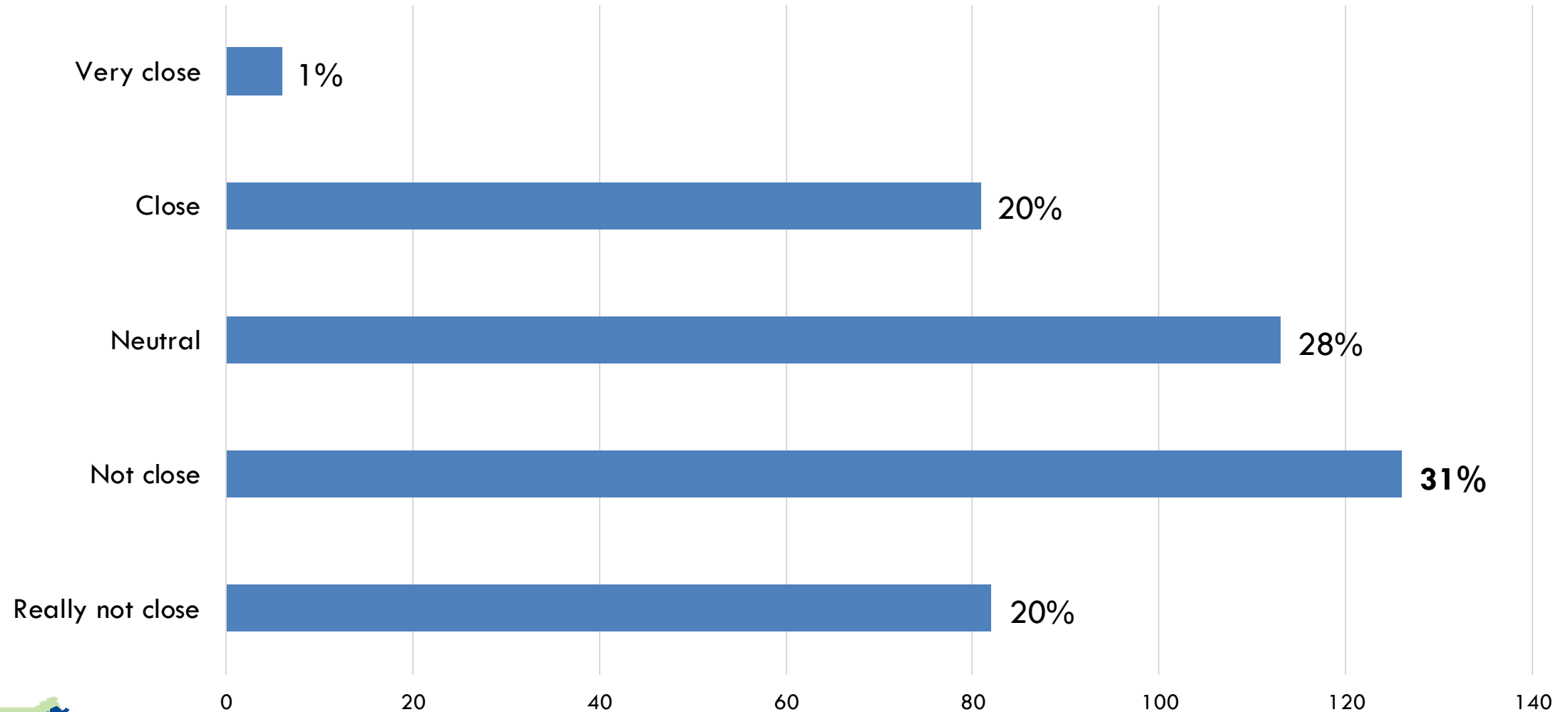
- 10/8 Downtown Block Walk
- 10/15 Adult ESL Program Focus Group (with MVP 2.0)
- 10/18 10:00-12:30 am Library, Granite Room
- 10/18 Senior Center sign-ups 10:00 am
- 10/29 Youth Council Meeting at Youth Center
- 10/30 10-11:30 am Senior Center
- 10/30 5:30-7:00 pm Library Granite Room
- 10/30 Small Business Meeting at Chamber of Commerce

Community Conversations



Community Survey Results

How close is Milford today to your ideal vision for the Town?



Community Survey Results

What words would you use to describe Milford today? (Fill in the blank)

Top three themes in responses:

1. Overcrowded/overpopulated
2. Shifting identity/transformation
3. Socio-economic challenges

Community Survey Results

Describe your vision for the future of Milford? (Fill in the blank)

Top five themes in responses:

1. Strengthen community development and identity with a focus on Downtown
2. Address concerns about traffic and congestion
3. Highlight importance of education and schools
4. Strengthen community cohesion and safety
5. Manage sustainable economic development

Community Survey Results

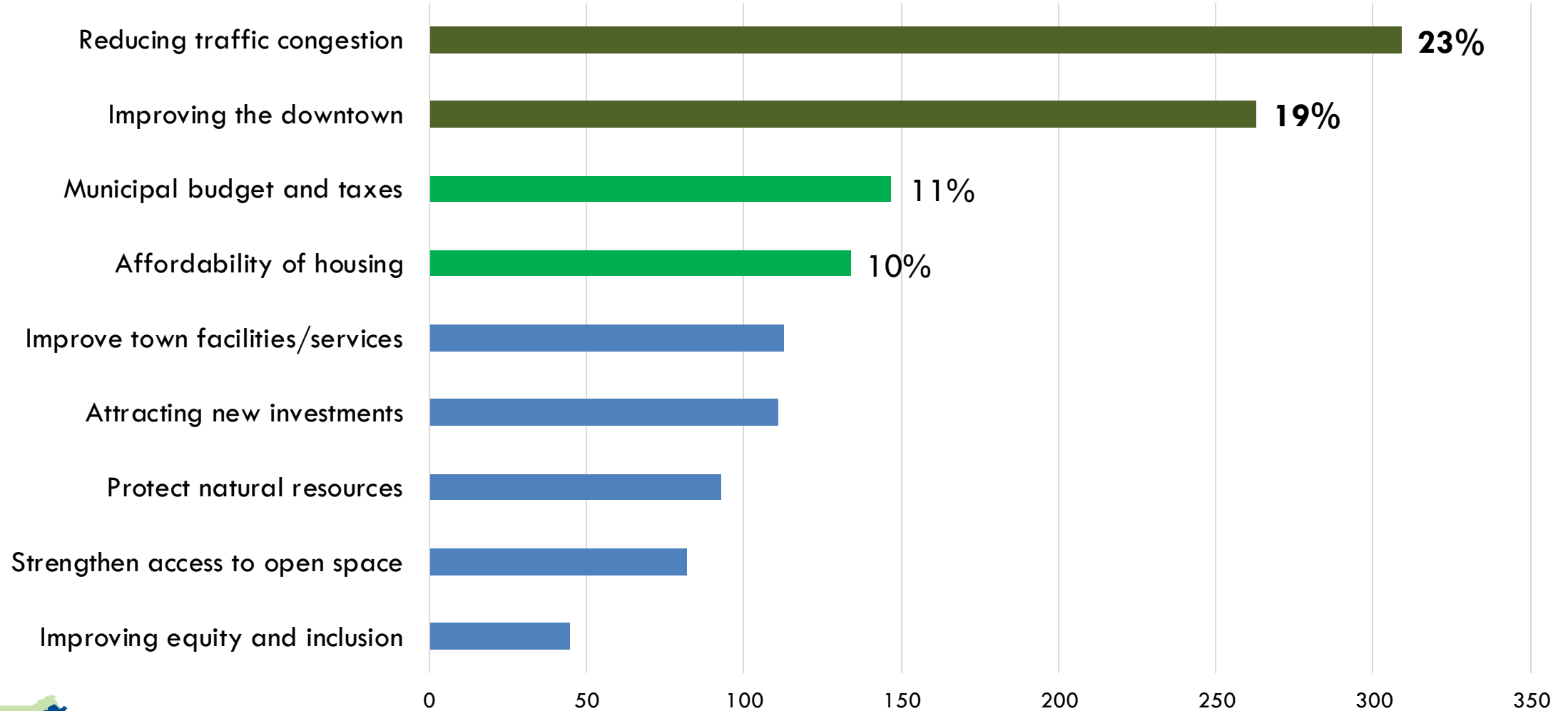
What is the legacy you hope to leave in Milford? (Fill in the blank)

Top five themes in responses:

1. Strengthen community and inclusion
2. Focus on education and the schools
3. Address safety and family-friendly environment
4. Strengthen economic development and small businesses
5. Strengthen historical preservation and community pride

Community Survey Results

What do you see as the top 3 challenges facing Milford?





Draft Vision Statement



Comprehensive Plan Vision (1 of 4)

Previous Vision Statement (2003)

Milford of the 21st Century must remain connected to the roots that made it a strong and vibrant community. New industries continue to replace those that are no longer viable because the town demonstrates the flexibility to work with business and industry and to take advantage of its strategic location and excellent transportation links.

Topics in paragraph:

- Connection to roots/legacy
- Economic development, business-friendly
- Excellent location and transportation

*Community
meetings,
survey
responses, Ad
Hoc
Committee
discussion*

Proposed Draft Vision Statement

Milford of the 21st Century honors its historic roots while embracing a dynamic and inclusive future. The Town supports a vibrant and welcoming resident and business community that builds connections between residents of all backgrounds and strengthens community identity and cohesion. The Town's strategic location and robust transportation network position it as a hub for new industries and businesses, driving managed and sustainable economic growth and innovation. The Town continues to improve transportation infrastructure to manage traffic, reduce congestion, and improve travel conditions in support of a vibrant local economy.

Comprehensive Plan Vision (2 of 4)

Previous Vision Statement (2003)

Milford remains a diverse community, welcoming and assimilating families from many ethnic backgrounds and providing a full range of jobs and services that ensure its future. Because it is a healthy reflection of the world around it, Milford attracts local and regional residents to its wide range of shopping and entertainment opportunities. In its revitalized downtown, residents enjoy a pedestrian friendly environment of shops, restaurants, parks, sports and cultural attractions.

Topics in paragraph:

- Diverse and welcoming
- Attracting residents and visitors
- Importance of downtown

*Community
meetings,
survey
responses, Ad
Hoc
Committee
discussion*

Proposed Draft Vision Statement

Milford continues to attract a diverse population by fostering a welcoming environment for families of all backgrounds and providing a range of housing options for different life stages. The Town's commitment to inclusivity is reflected in supportive community services and housing policies that help meet the needs of all residents. Local shopping, entertainment, and services also attract residents and visitors to Milford. In particular, the Downtown is a central feature of the community offering a pedestrian-friendly environment which brings the community together with a variety of local shops, restaurants, parks, cultural venues, and events.

Comprehensive Plan Vision (3 of 4)

Previous Vision Statement (2003)

Because Milford has adopted a strategy of inclusion, its housing opportunities remain suitable for meeting a wide range of needs and integrating those households into mixed and dynamic neighborhoods. Older, long-time residents, their children, and newcomers seeking affordable, moderately priced and high-end housing continue to find in Milford options that allow them to live and remain participants and contributors in a community they recognize as home. Milford's timely recognition of the need for elderly housing, close to its vital downtown, has allowed it to become a safe and highly desirable haven for its older residents.

Topics in paragraph:

- Inclusive housing for wide range of needs

*Community
meetings,
survey
responses, Ad
Hoc
Committee
discussion*

Proposed Draft Vision Statement

Because Milford has adopted a strategy of inclusion, the Town supports housing opportunities suitable for meeting a wide range of needs. A diverse resident population is drawn together fostering a sense of shared community pride and identity. All households, from long-time residents to newcomers, share in a sense of community through enriching events, programs, and services. Civic engagement and community pride are enhanced through a strong emphasis on education and Milford Schools. The Town prioritizes public safety and welfare for all residents by enforcing regulations related to high quality and healthy housing opportunities.

Comprehensive Plan Vision (4 of 4)

Previous Vision Statement (2003)

Milford has re-invented its old industrial core and taken advantage of its unique position at the headwaters of the Charles River. The core of the community has been re-opened to welcome natural, park-like settings that remain the pride not only of residents but of the business community that helped to build and maintain them. Pride in the community remains strong based on its family friendly attitude that values good schools, social services, parks, excellent municipal management and a well-maintained infrastructure. While many of the surrounding communities are exclusively suburban in nature, Milford has managed its evolution in a manner that has allowed it to remain a community, not merely a place to live.

Topics in paragraph:

- Importance of reinvention and redevelopment
- Importance of natural resources and parks
- Importance of community
- Importance of strong services and infrastructure



*Community
meetings,
survey
responses, Ad
Hoc
Committee
discussion*

Proposed Draft Vision Statement

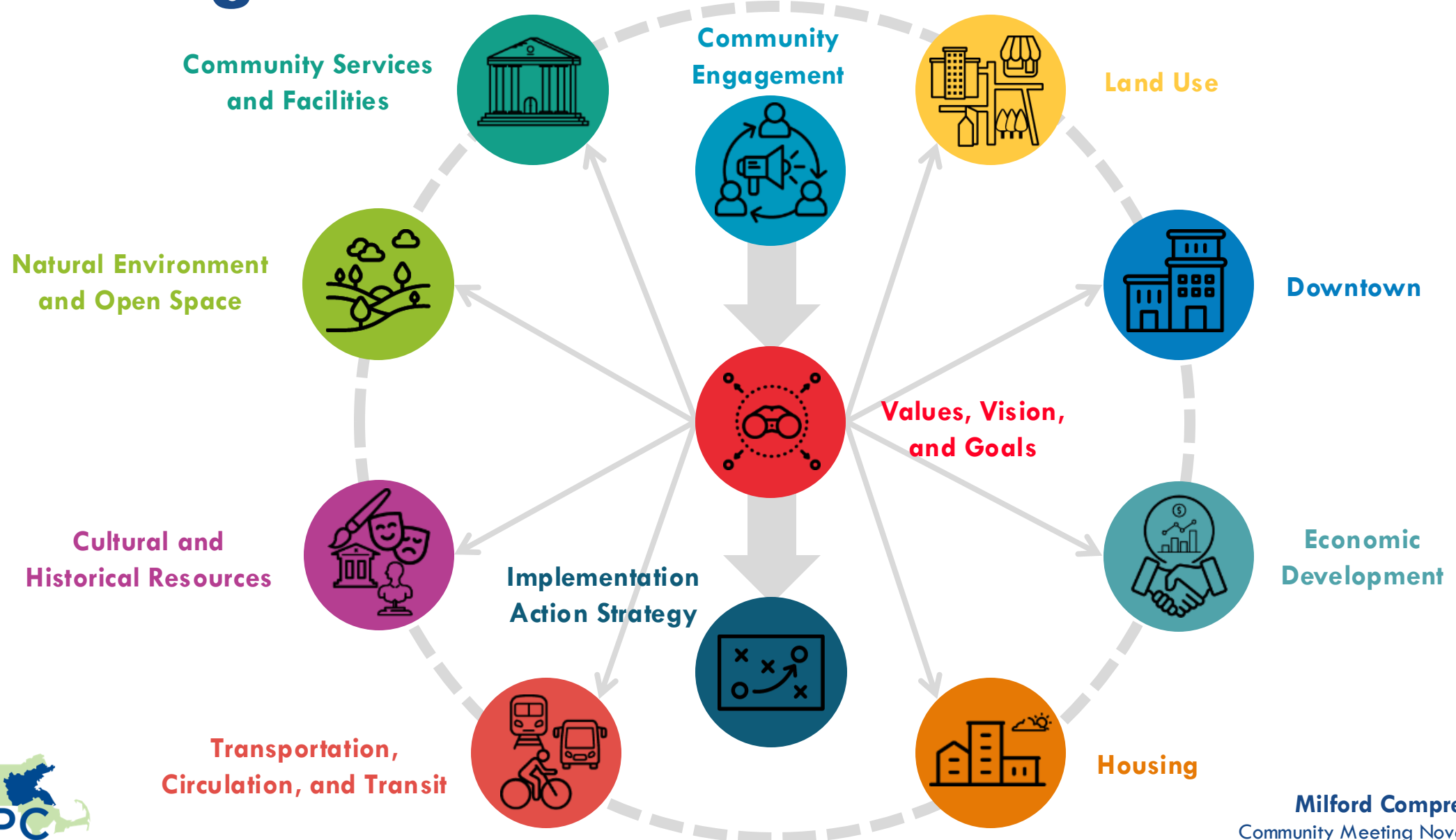
Milford encourages the continued transformation of high-tech industries, healthcare, and small businesses to support sustainable redevelopment and economic investments. The Town continues to prioritize its unique position at the headwaters of the Charles River with a focus on preserving natural resources and protecting water sources. The core of the community has been transformed through a system of interconnected natural, park-like settings that remain the pride not only of residents but of the business community that helped to build and maintain them. Pride in the community is strengthened through accessible parks, responsive social services, excellent municipal management, and well-maintained infrastructure. Milford has managed its growth and evolution in a manner that has allowed it to remain a community where residents share a sense of shared values and common purpose.



Initial Draft Goals



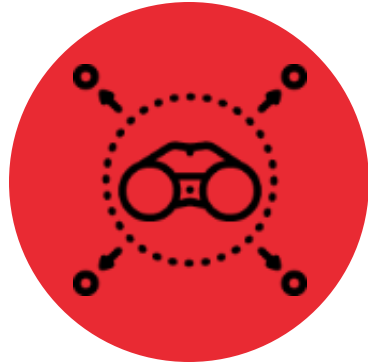
Plan Organization



Plan Topics



**Community
Engagement**



**Values, Vision,
and Goals**



Land Use



Downtown



**Economic
Development**



Housing



**Transportation,
Circulation, and Transit**



**Cultural and
Historical Resources**



**Natural Environment
and Open Space**



**Community Services
and Facilities**



Next steps



Project website

Stay involved!







Sign up for the email list:
mapc.ma/milford-plan24



Learn more!

Visit the plan website:
<https://mapc.ma/MilfordCompPlan>



PHASE 1	2024	Winter	Project Kick-off
			Town Tour
			Municipal Interviews
		Spring	Community Meeting #1 (Visioning Workshop)
			Community Survey #1
			Community-Based Organization Interviews
		Summer	Community Values and Vision
			Data Collection & Analysis
			Existing Conditions Topic Summaries
			Assets, Challenges, Opportunities
PHASE 2		Fall	Preliminary Draft Goals
			Community Workshop #2 (Feedback on Goals)
			Community Survey #2
			Refining and Finalizing Goals
	2025		Preliminary Strategies and Actions
		Winter	Municipal Review Meetings
			Implementation Approach
			Final Community Meeting
		Spring	Draft Plan & Public Comment Period
			Final Plan
			Plan Adoption (Planning Board)

Community Survey #2

- Seeking feedback on draft vision statement and draft topic goals
- Help with outreach and promotion of survey
- Online link and QR code

Community Survey #2

<https://bit.ly/milford-plan24-survey2>



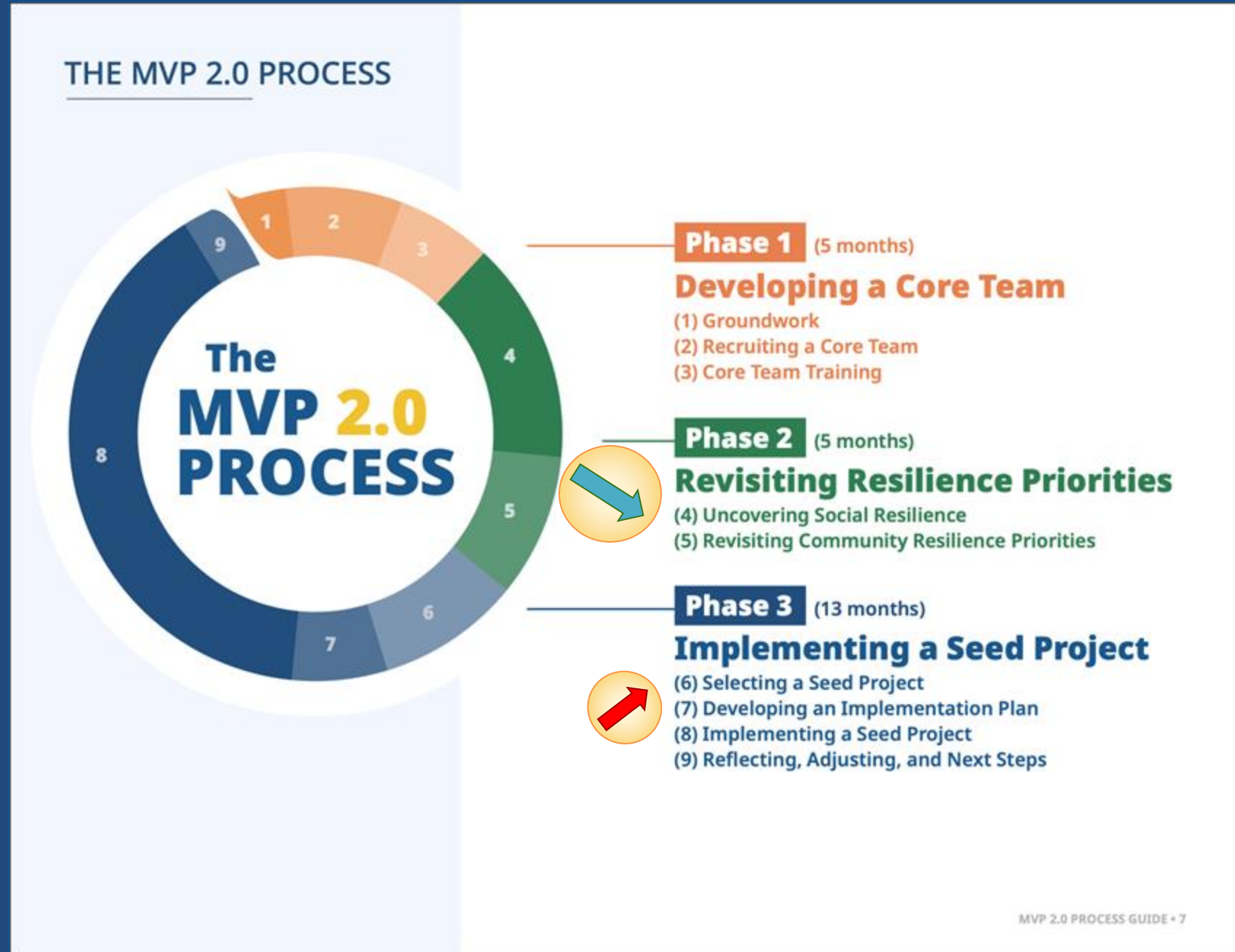
**We want to hear from
YOU!**

*Multiple opportunities to
engage,
between now and
November 2025.*

*For more information,
contact:*

Elizabeth Mainini,
Office of Planning &
Engineering

508-634-2317
emainini@milfordma.gov



What is it like
Living in Milford?

We want to hear
YOUR STORY!

Help us mold the future of
Milford



Community Listening Tour

Milford is participating in a program
to connect with YOUR COMMUNITY.

We will be designing & constructing a
project to help YOUR COMMUNITY.



What we want to Know:

- What great experiences have you had in Milford?
- Share a story/experience that could have been better.
- Have you noticed changes in weather over time?
Large rainstorms,
longer colder winters,
hotter drier summers?
- How do these things affect your family?
- How can we help?

I'm available if you want to share your experience or learn more:

508-634-2317

Elizabeth Mainini

emainini@milfordma.gov

¿Cómo es vivir en Milford?

Nosotras queremos
escuchar tu historia!

¡Ayúdanos a crear el futuro
de Milford!



Gira de Escuchas Comunitaria

Milford participa en un programa para
conectarse con su comunidad.

¡Diseñaremos y construiremos un
proyecto para ayudar a tu comunidad!



Lo que queremos saber:

- ¿Qué buenas experiencias has tenido en Milford? ¿
- Comparte una experiencia que podría haber sido mejor.
- ¿Has notado cambios en el clima a lo largo del tiempo?
Grandes tormentas
Inviernos más largos y fríos
- ¿Cómo afectan estas cosas a tu familia?
- ¿Cómo podemos ayudar?

Estoy disponible si quieres compartir tu experiencia o aprender más. Traducción disponible solo en persona.

Elizabeth Mainini en el Ayuntamiento de Urbanismo e Ingeniería 508-634-2317 / emainini@milfordma.gov



Thank you!

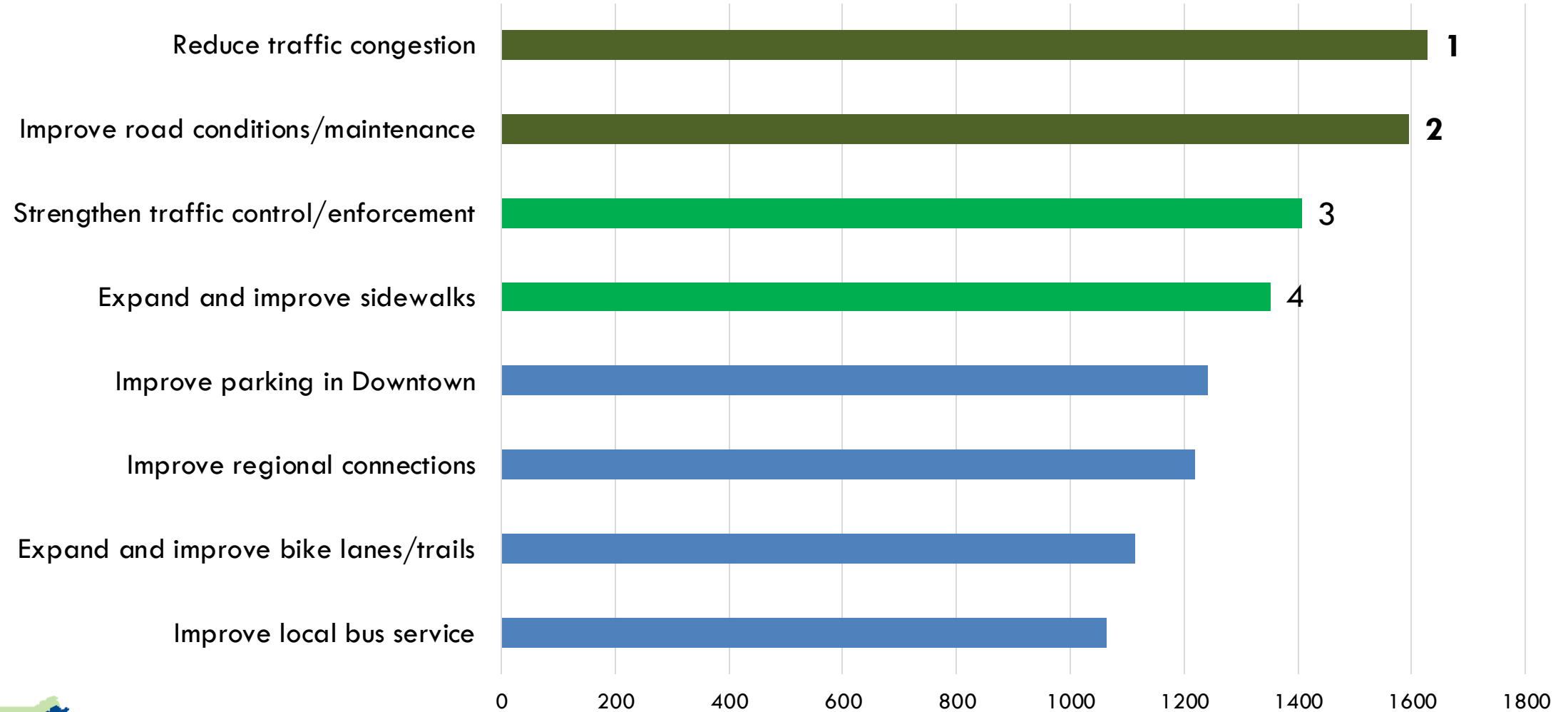


Group discussion agreements

- Be fully present
- Use "I" statements
- Take space, Make space
- Share the lesson not the story
- One mic
- Assume good intentions
- Use "oops" and "ouch"

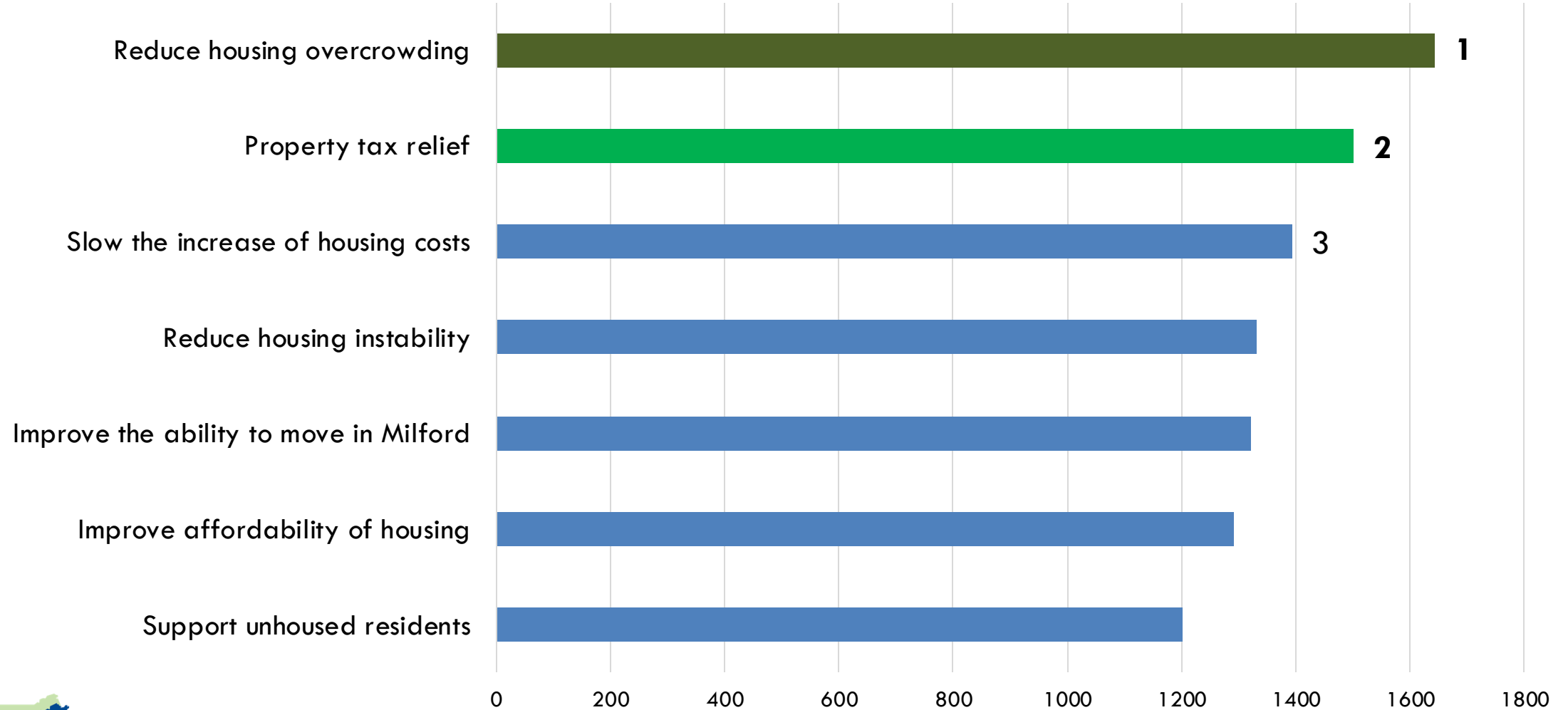
Community Survey Results

What are the primary challenges for transportation in Milford?



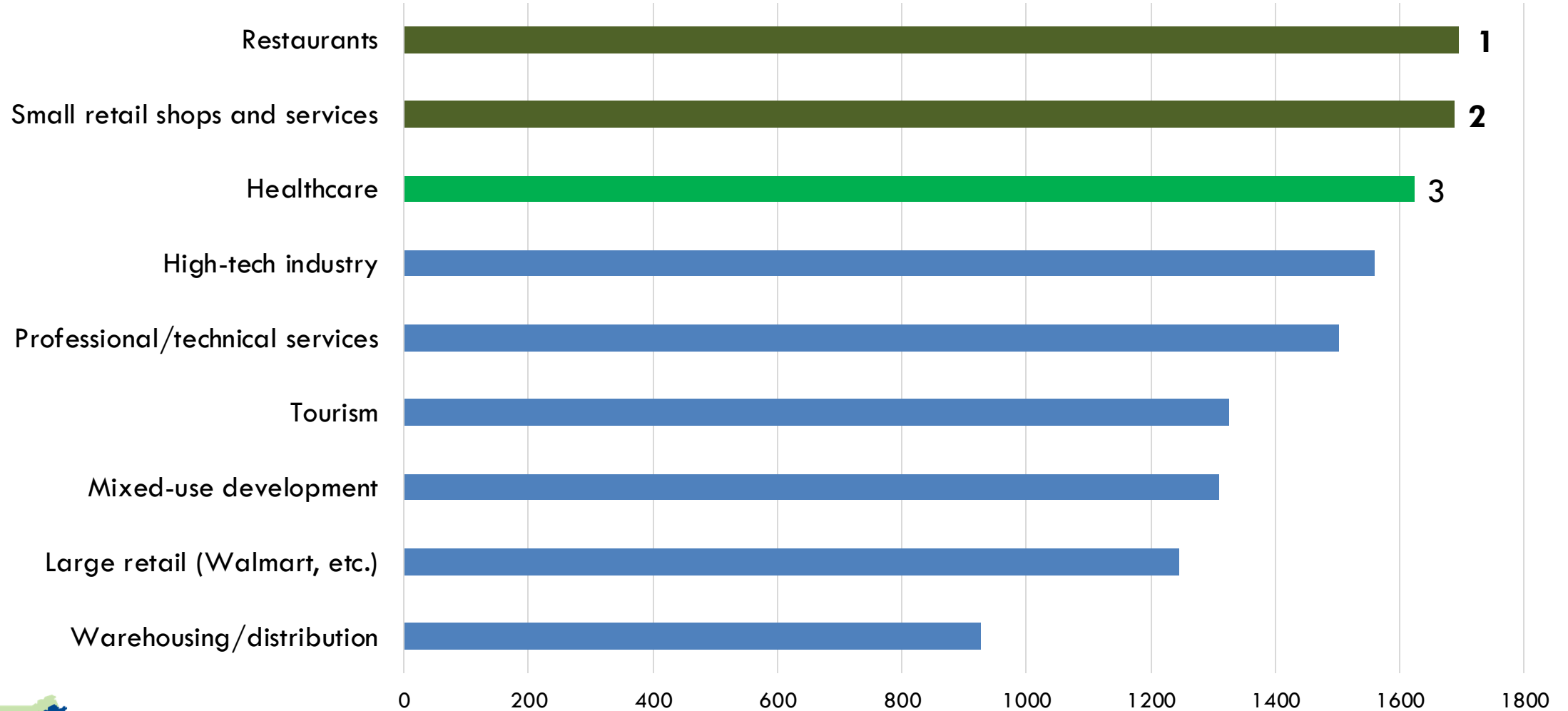
Community Survey Results

How important are the following housing issues in Milford?



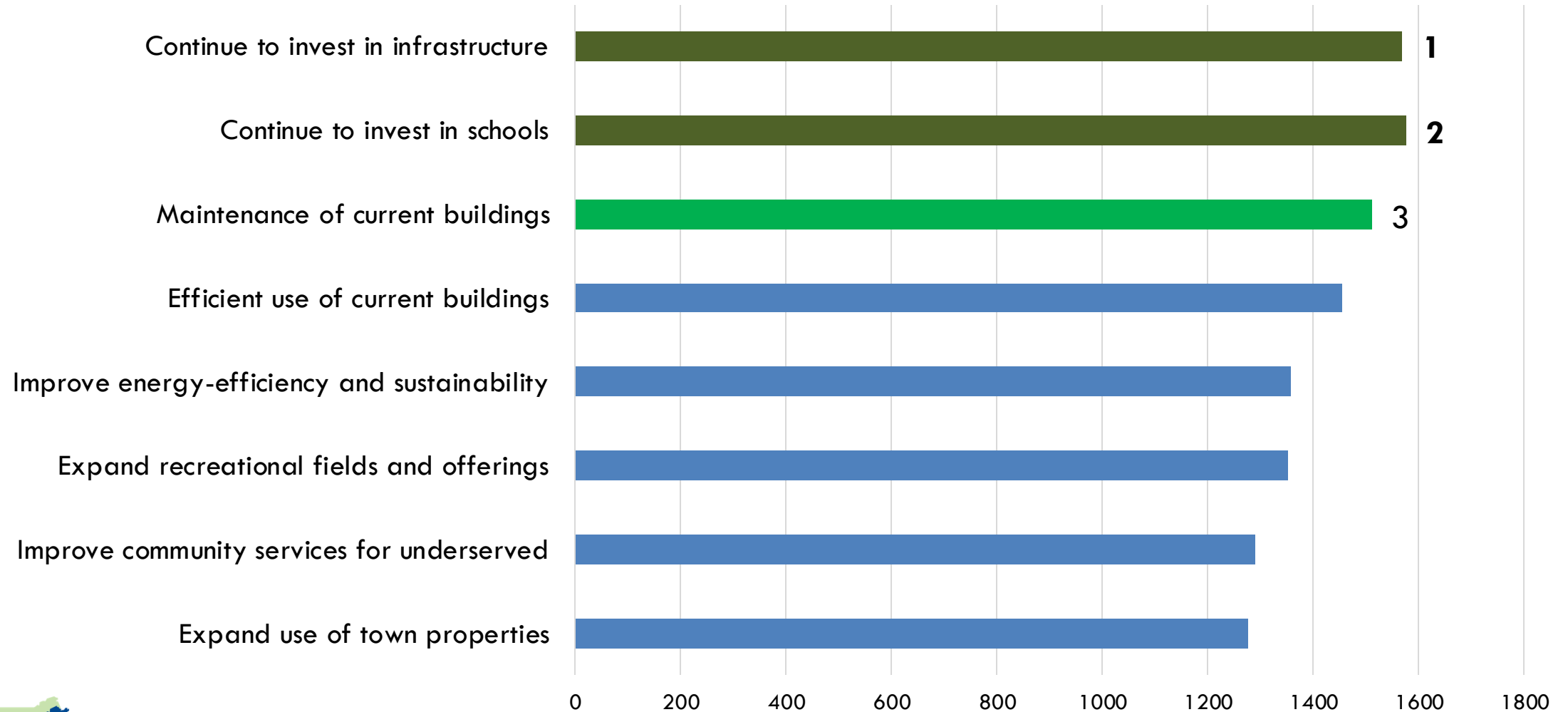
Community Survey Results

What are the primary challenges for economic development?



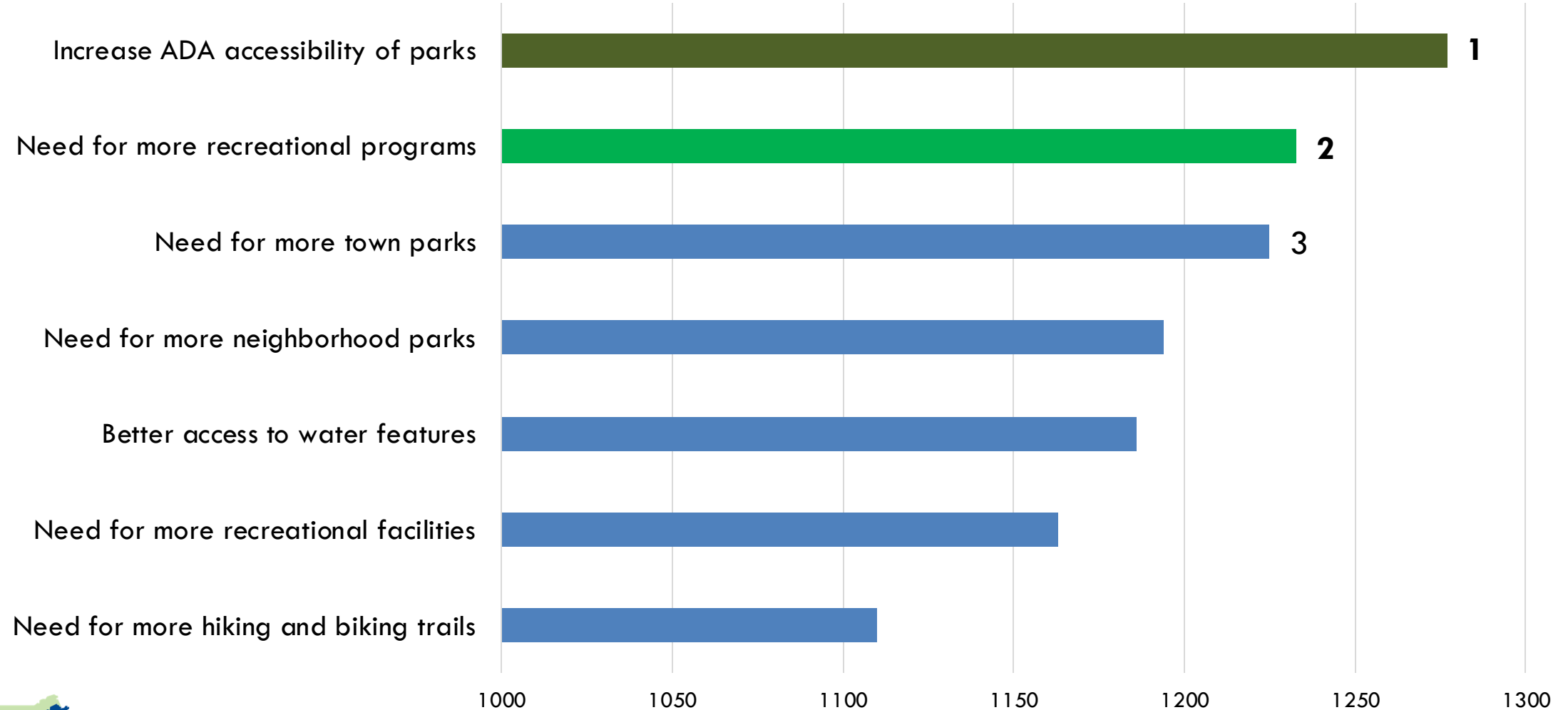
Community Survey Results

How important are the following community facilities/services?



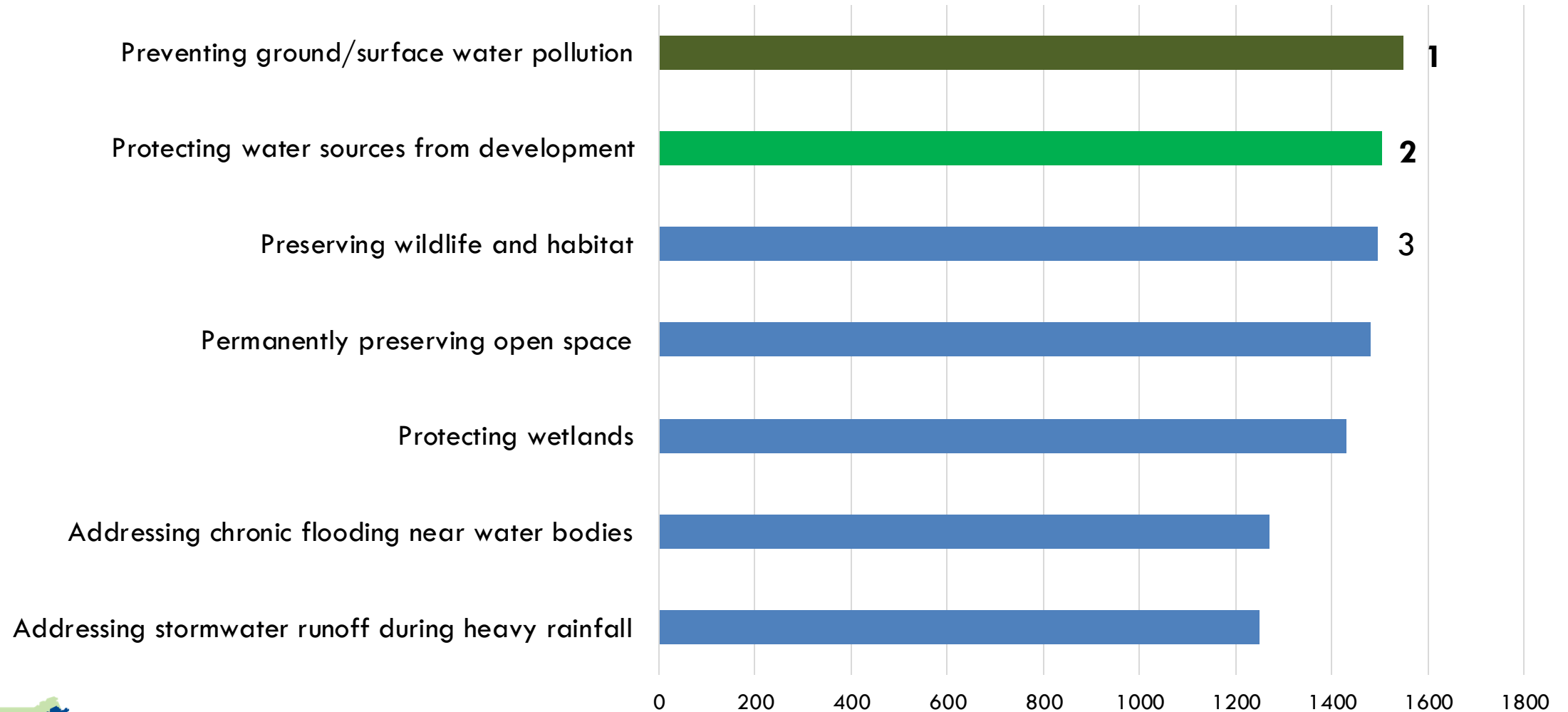
Community Survey Results

How important are these open space and recreation issues?



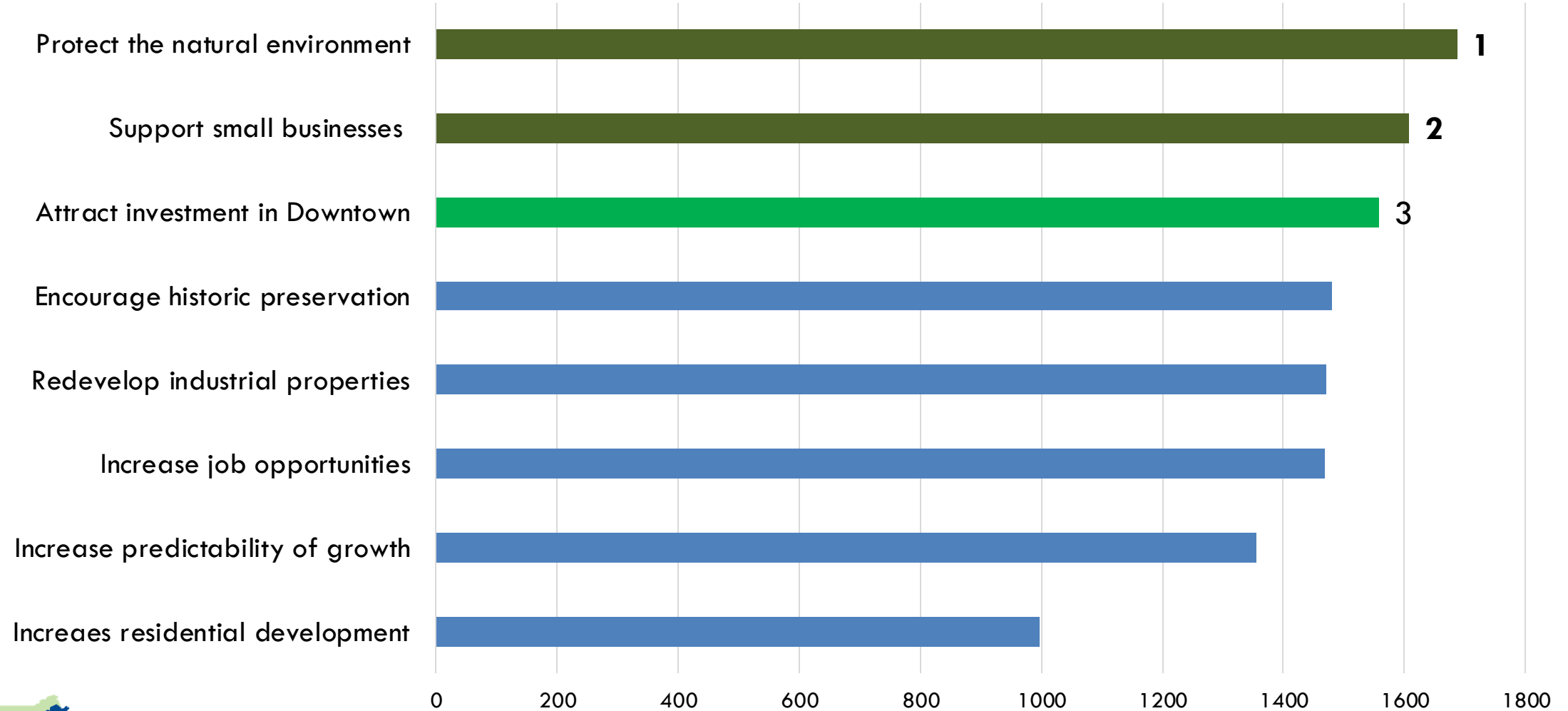
Community Survey Results

How important are the following types of environmental concerns?



Community Survey Results

What are the primary challenges for land use in Milford?



Community Survey Results

How important are history, arts, and culture efforts in Milford?

