



Environment Department



We're the Environment Department!



Martin Pillsbury,
Environmental
Planning Director



Kat Kobylt, Senior
Environmental Planner



Rodoshi Sinha,
Environmental Planner II

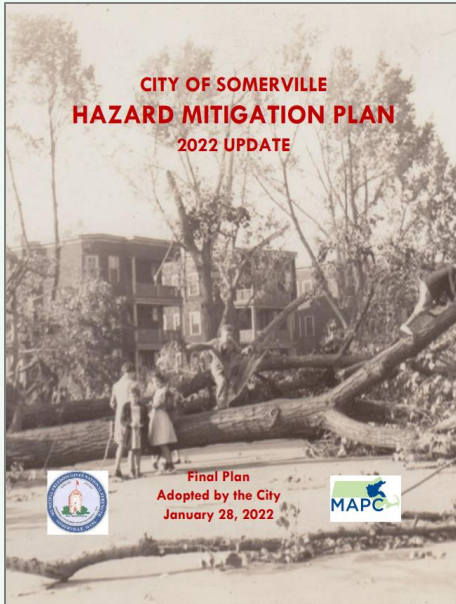


Van Du, Assistant
Director

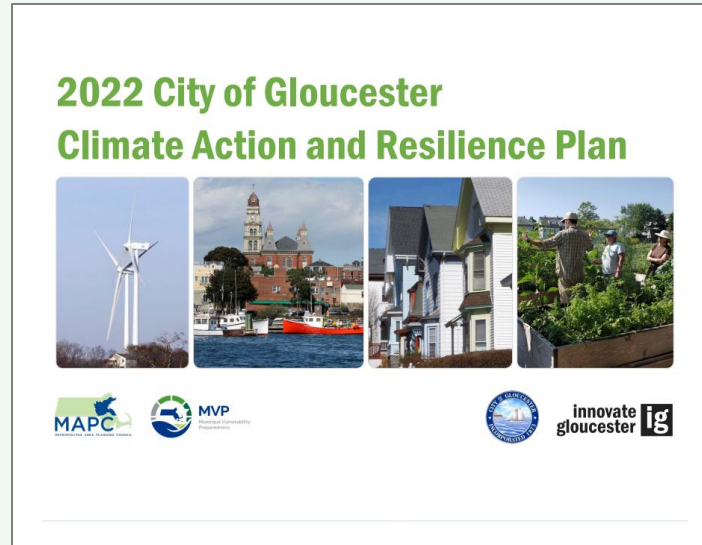


Molly Shea, Senior
Environmental Planner

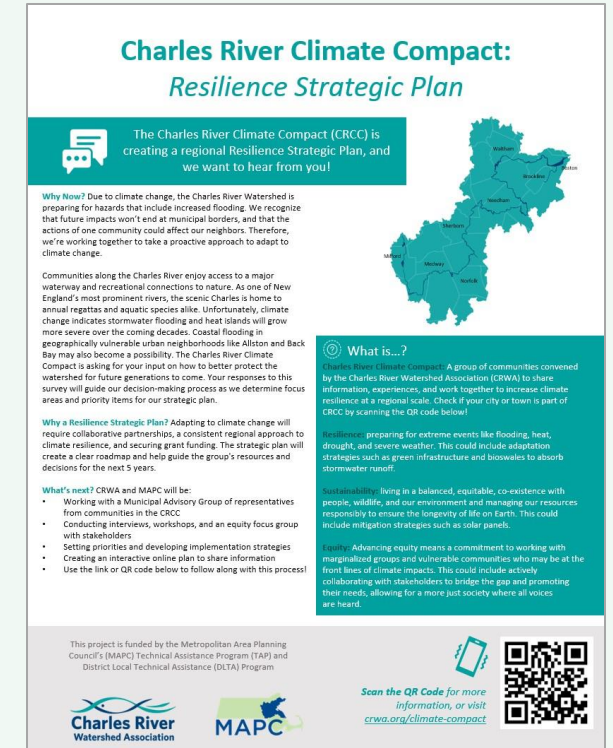
What We Do



Natural Hazard Mitigation Plan (HMP) Updates



Climate Action Plans



Regional Resilience Planning

What We Do (cont.)

- North Shore Water Taskforce
- EEA Flood Vulnerability Assessment & Impacts on Environmental Justice Communities
- Climate Resilience Playbook
- MVP 2.0
- Municipal Bylaw Revisions (flood, stormwater, supporting resilience...)
- Research
 - Managed retreat
 - Urban ecology
- Advocacy work:
 - Flood Disclosure
 - PFAS

Toolkit: Climate Resilient Land Use Strategies



Climate Resilient Land Use Strategies: <https://www.mapc.org/resource-library/climate-resilient-land-use-strategies/>



Green Stormwater Infrastructure Siting Tool

Supporting MAPC municipalities in equity-centered siting of Green Infrastructure.

ABOUT PROJECT USER GUIDE FIELD SURVEY

SELECT SITES EXPLORE LAYERS ADD DATA

SELECT SITES

Press the ► arrow next to each category to filter sites by indicators in that category. Toggle the green button on/off to turn on/off your selected filters for each category.

Select a municipality: Change municipality: Boston

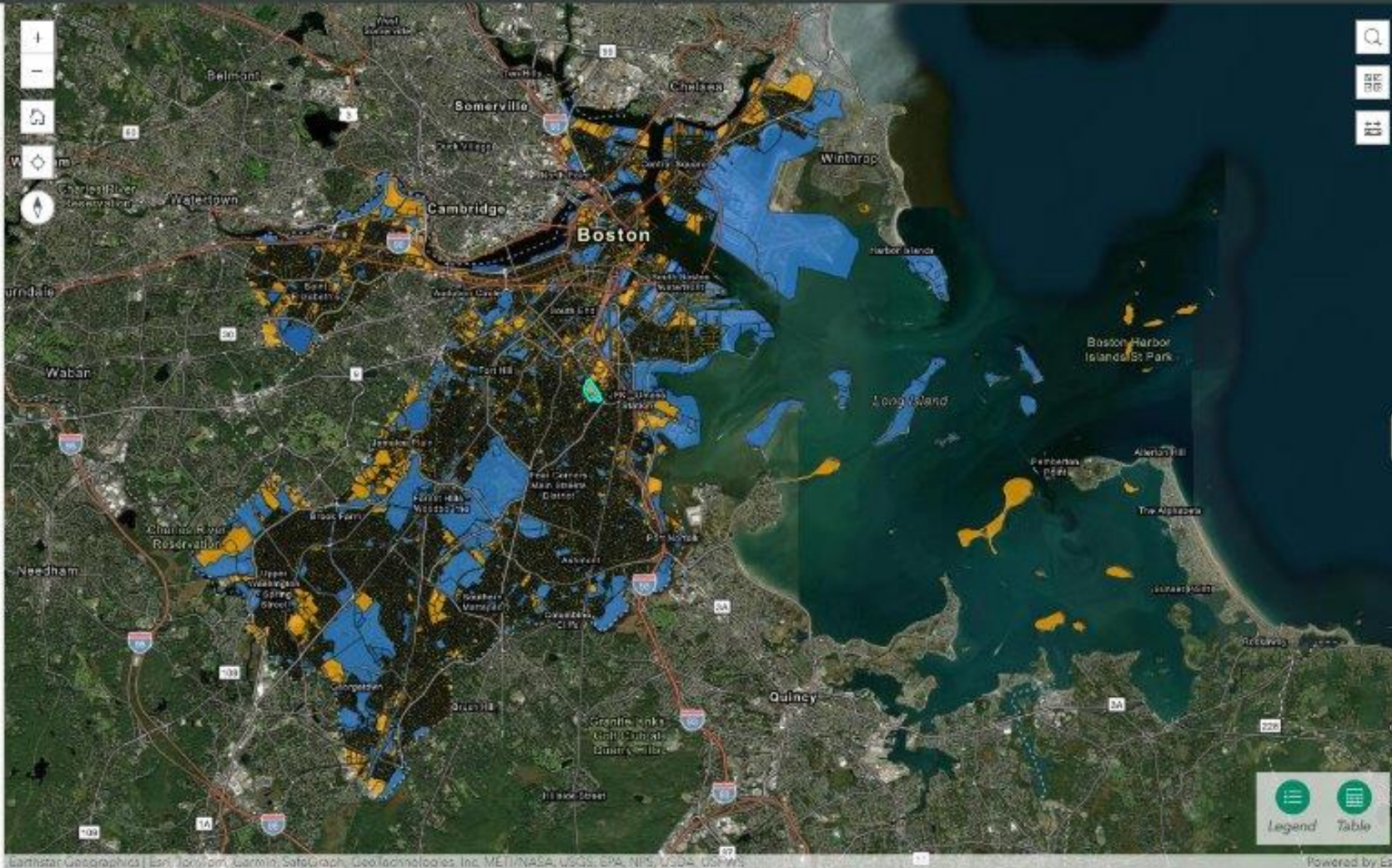
Baseline site type

Equity considerations

Land cover characteristics

Sensitive land

Drainage network (only available for select municipalities)



Pounds of phosphorous per year from impervious surfaces (total)	34.31
Pounds of phosphorous per acre per year from impervious surfaces	1.59
Distance to nearest catch basin	No drainage data available for Boston
Distance to drainage pipes	No drainage data available for Boston

Sensitive land

Watershed	Lower Charles River
Overlap with wetlands?	no
Overlap with Zone II WPA?	no
Overlap with intermediate WPA?	no
Contain Activity Use Limitation?	no


- ### Equity
- This site **is** located in an Environmental Justice Population block group due to meeting the following criteria: Minority.
 - This site **is not** located in a ParkServe priority area.
 - Compared to other census blocks in Boston, this site **is** in a high heat area.
 - Compared to other census block groups in Boston, this site **is** in a low

Created by the Metropolitan Area Planning Council (MAPC) with support from MassDEP.

<https://www.mapc.org/resource-library/green-stormwater-infrastructure-siting-tool/>

Accelerating Climate Resilience (ACR) Program

- Helping municipalities advance strategies that protect people, places, and communities from the impacts of climate change
- Key program components:
 - Municipal resilience implementation grants
 - Resilience Community of Practice
 - ACR Speaker Series



The screenshot shows the MAPC website page for the Accelerating Climate Resiliency Grant Program. The header includes navigation links for JOBS, METROCOMMON 2050, CALENDAR, PRESS ROOM, BLOG, LEARN, OUR WORK, GET INVOLVED, ABOUT MAPC, and a SEARCH bar. The main content area features the title "Accelerating Climate Resiliency Grant Program" and a sub-header "CLIMATE RESILIENCY GRANT PROGRAM". Below the title is a paragraph stating that MAPC is working in partnership with the Barr Foundation to accelerate climate resilience in the region by helping municipalities advance strategies that protect people, places, and communities from the impacts of climate change. The intent is to fund actionable resilience interventions that facilitate long-term, innovative changes leading to greater readiness for climate change. In particular, MAPC seeks to elevate projects that will advance climate equity, regional coordination, and social cohesion. There are two buttons: "FY23 ACR Municipal Grant Program Application Form" and "FY23 ACR Municipal Grant Program Invitation for Proposals". A deadline notice states: "The deadline for proposals is 5:00 p.m. on Friday, October 14, 2022. Proposals should be sent electronically to Van Du by email at vdu@mapc.org OR uploaded at this link if files are too large for email. If uploading to the Qualtrics link, please email Van Du to confirm that MAPC received your files." On the right side, there is a photo of a path through a forest and an "UPDATES" section that says: "MAPC is offering another round of Accelerating Climate Resiliency (ACR) Grants to help municipalities advance strategies that protect people, places, and communities from the impacts of climate change. Join us for an informational webinar on the next round of ACR grants on Tuesday, September 20, 2022, from 10:30 a.m. - 12:00 p.m. Register in advance here."

www.mapc.org/acceleratingresiliency

