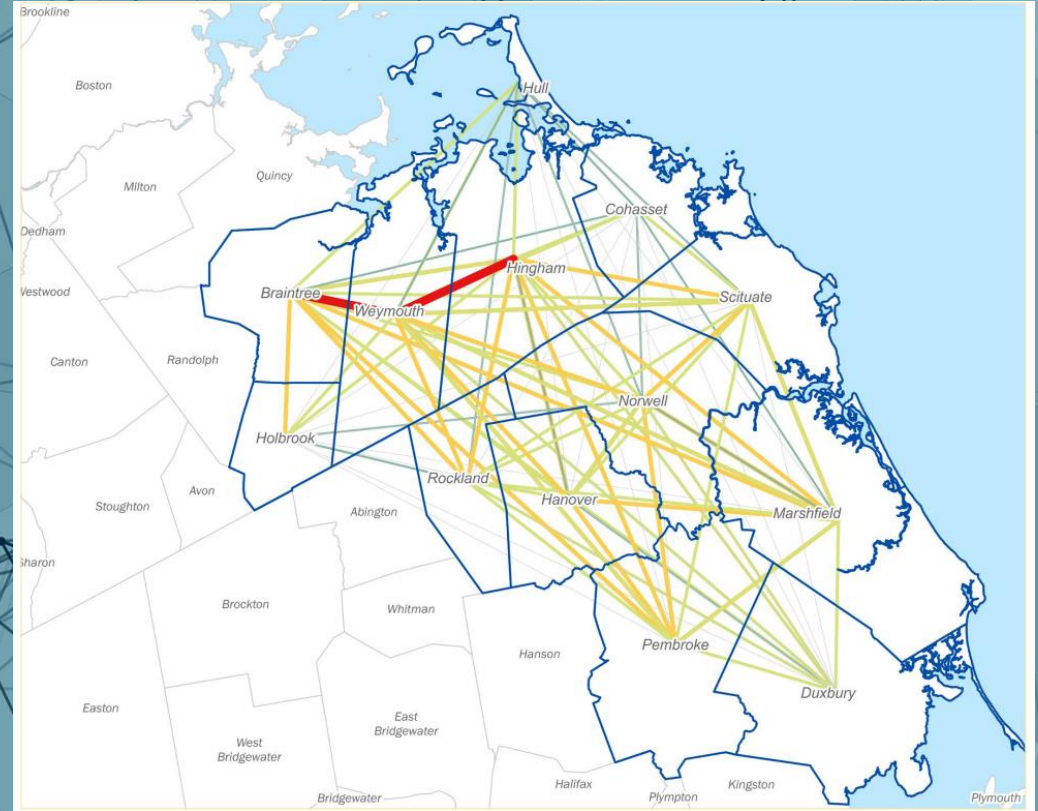


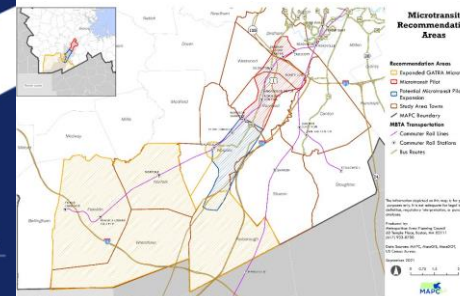
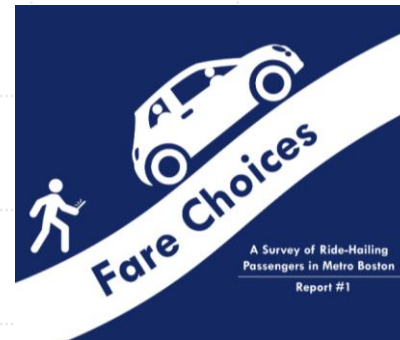
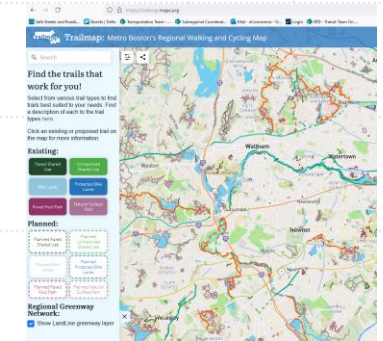
Transportation Planning with MAPPC



South Shore Coalition meeting
September 19, 2024

What Do We Do?

- Place-based planning projects
- Policy
- Research
- Convening
- Capital planning



Issue Areas and Connections

We work on:

- Electric Vehicles
- Public Transportation
- Parking
- Bike and Pedestrian Plans
- LandLine (Trails)
- Transportation/Land Use Coordination (e.g. MBTA Communities/3A)
- ...and more!



Source: FHWA.

South Shore Coalition Mobility Study

Recommendations include:

- Utilize Transportation Demand Management (TDM) Resources
- Update and Establish Complete Streets Policies
- Develop a Transportation Management Association (TMA)
- Coordinate with Existing Services
- Operate a Pilot (five concepts developed)



Tufts UEP: Zoning for Livable Communities

- Spring 2024 collaboration with graduate students from Tufts University's Urban and Environmental Policy and Planning (UEP) program
- Research question: *After adopting multifamily zoning districts under Section 3A, what transit, climate, and equity policies can municipalities use to develop their districts into sustainable, connected neighborhoods?*



**Zoning for Livable Communities:
MBTA Communities Law as a Catalyst
for Municipal Opportunity**

Field Projects Spring 2024

Tufts
UNIVERSITY



Tufts UEP: Zoning for Livable Communities

Case studies of commuter rail and adjacent communities

- Salem
- Framingham
- Scituate
- Lexington

Policy recommendations

- Multimodal Mobility
- Parking Reform
- Climate Resilience & Mitigation
- Housing Affordability



**Zoning for Livable Communities:
MBTA Communities Law as a Catalyst
for Municipal Opportunity**

Field Projects Spring 2024

Tufts
UNIVERSITY



Scituate

A small coastal town 30 miles south of Boston

Population: 18,190

Median Household Income: \$108,194

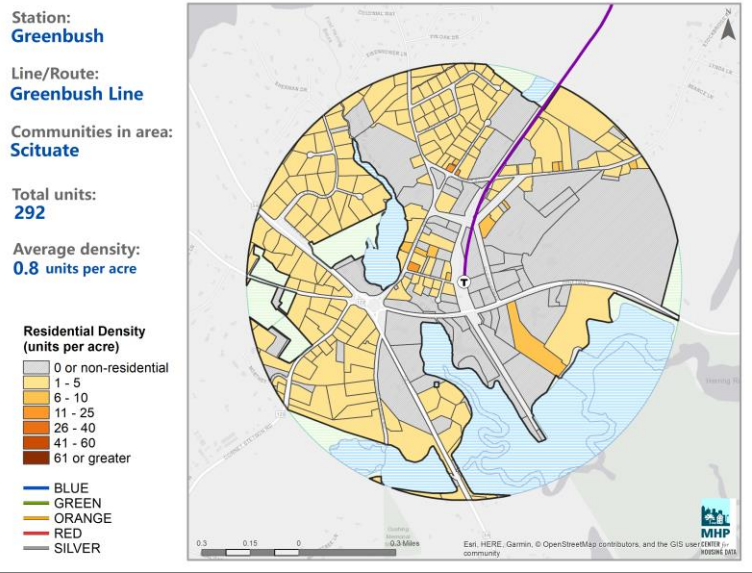
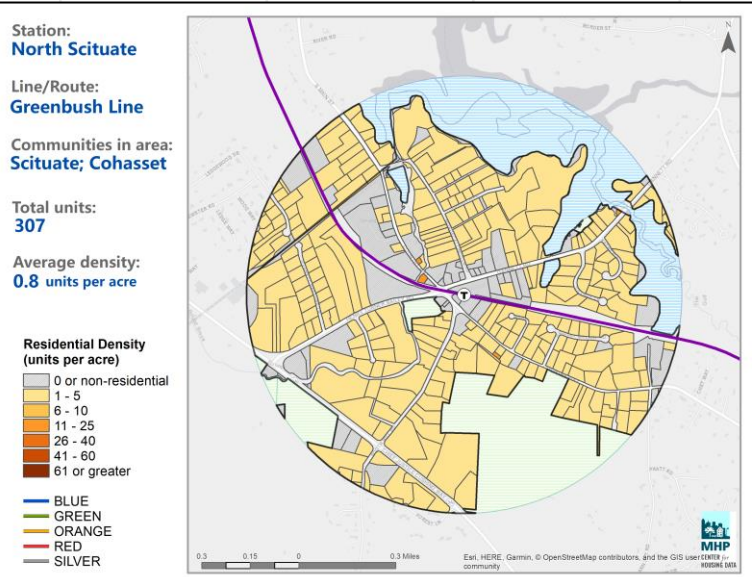
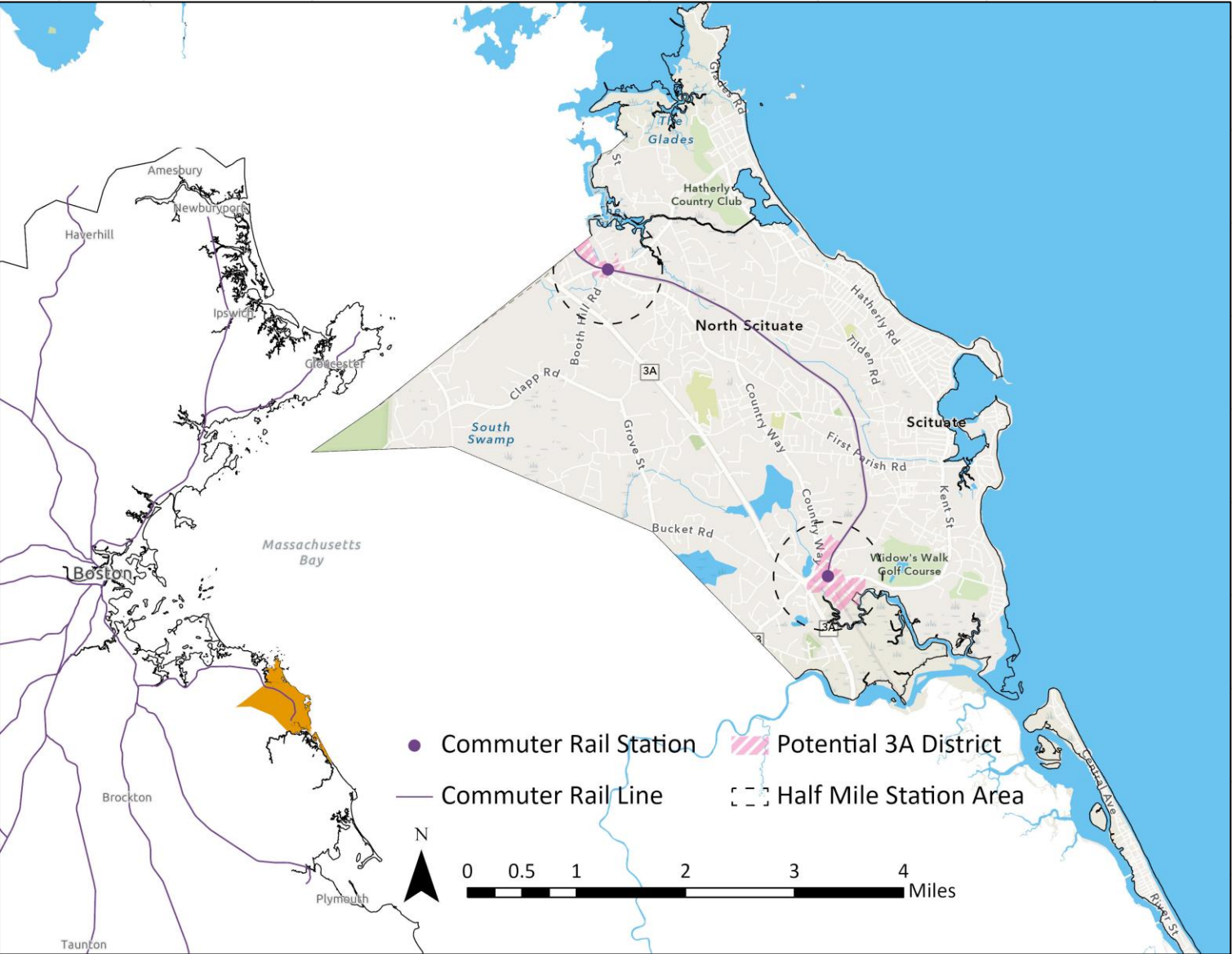
Renter Population: 13%

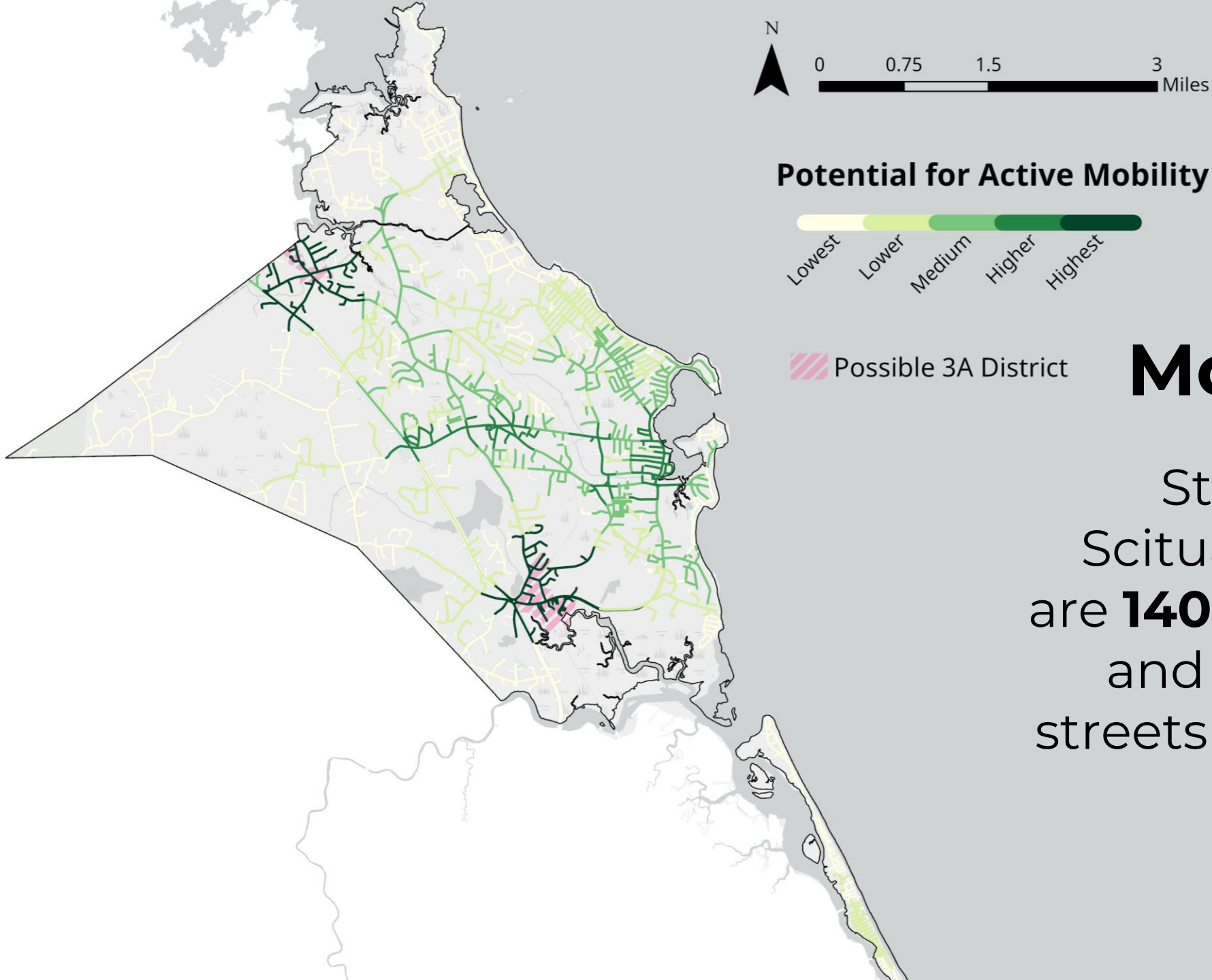
Non-Hispanic white: 91%

- ✓ Master Land Use Plan
- ✓ Climate Action Plan
- ✓ Housing Action Plan
- ✓ Community Visioning plan
- ✓ Open Space Plan



Housing





Potential for Active Mobility



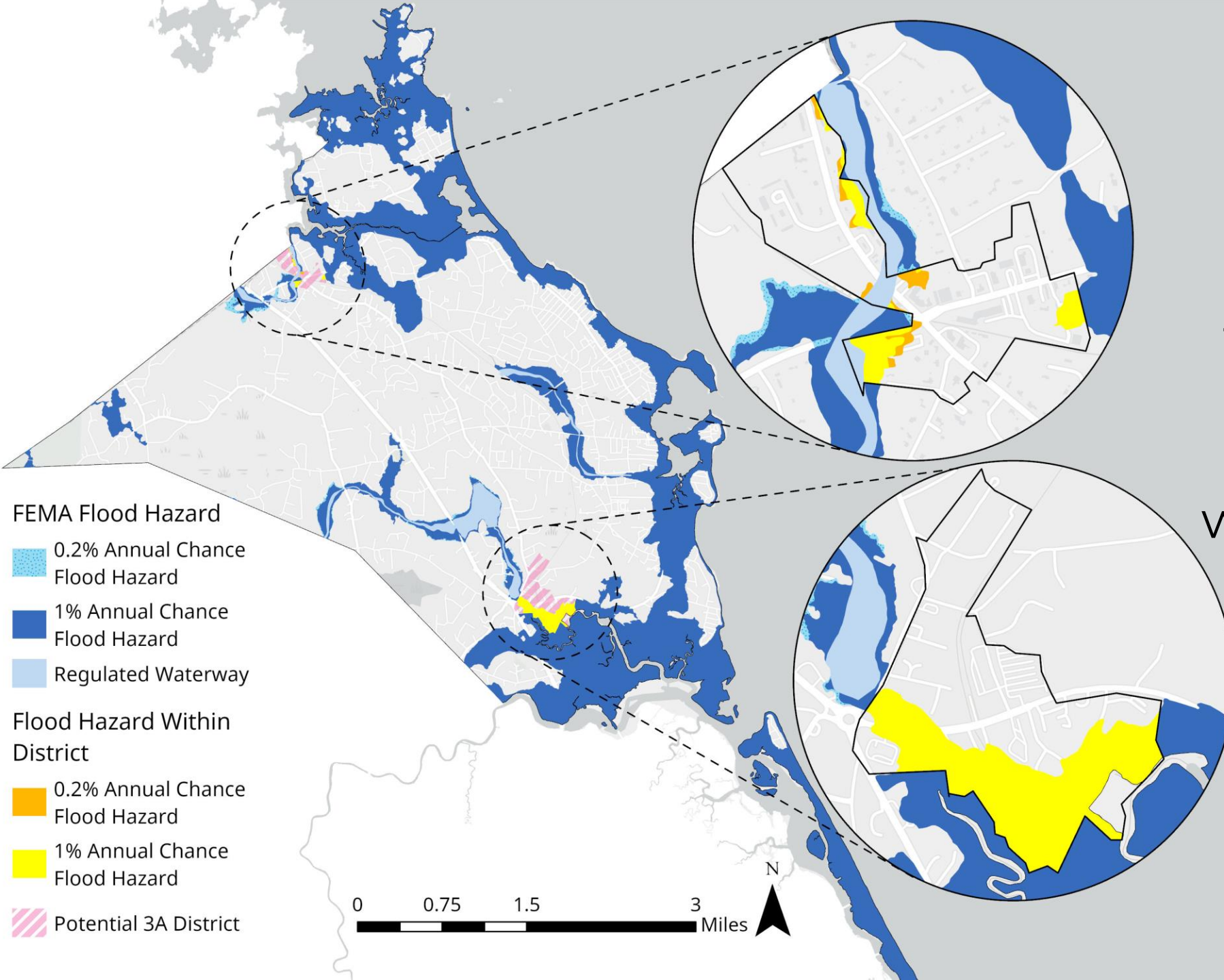
 Possible 3A District

Mobility

Streets within Scituate's 3A district are **140%** more walkable and bikeable than streets in the rest of the town.

Climate

Scituate faces a high risk of flooding and sea level rise **townwide** and within 3A districts.



Multimodal Mobility



- ✓ Foster a culture of transit ridership and choice in mobility
- ✓ Implement complete streets policy and active mobility planning
- ✓ Prioritize transit on local streets

Parking Reform

- ✓ Reduce or eliminate parking minimums for new developments
- ✓ Consider parking maximums
- ✓ Facilitate shared parking
- ✓ Unbundle parking from housing cost
- ✓ Details at perfectfitparking.mapc.org



BEFORE



AFTER

Transportation Finance Advocacy

- MBTA and transportation statewide are underfunded
- MAPC advocating for policy solutions with Governor and Legislature
 - Recent white papers on commercial parking taxes, retail delivery fees, and transportation network company (TNC) fees as potential revenue sources
 - Update of broader Transportation Finance Recommendations forthcoming
- Details at <https://www.mapc.org/resource-library/transportation-funding-opportunities/>





Discussion

- What opportunities do you see for multimodal mobility, parking reform, and transit-oriented development in your cities/towns and across the South Shore?
- How can MAPC assist you in working on the local transportation needs that the MPO has identified, and/or other transportation priorities?
- How would you like to be involved in efforts to advocate for more local and statewide transportation funding?