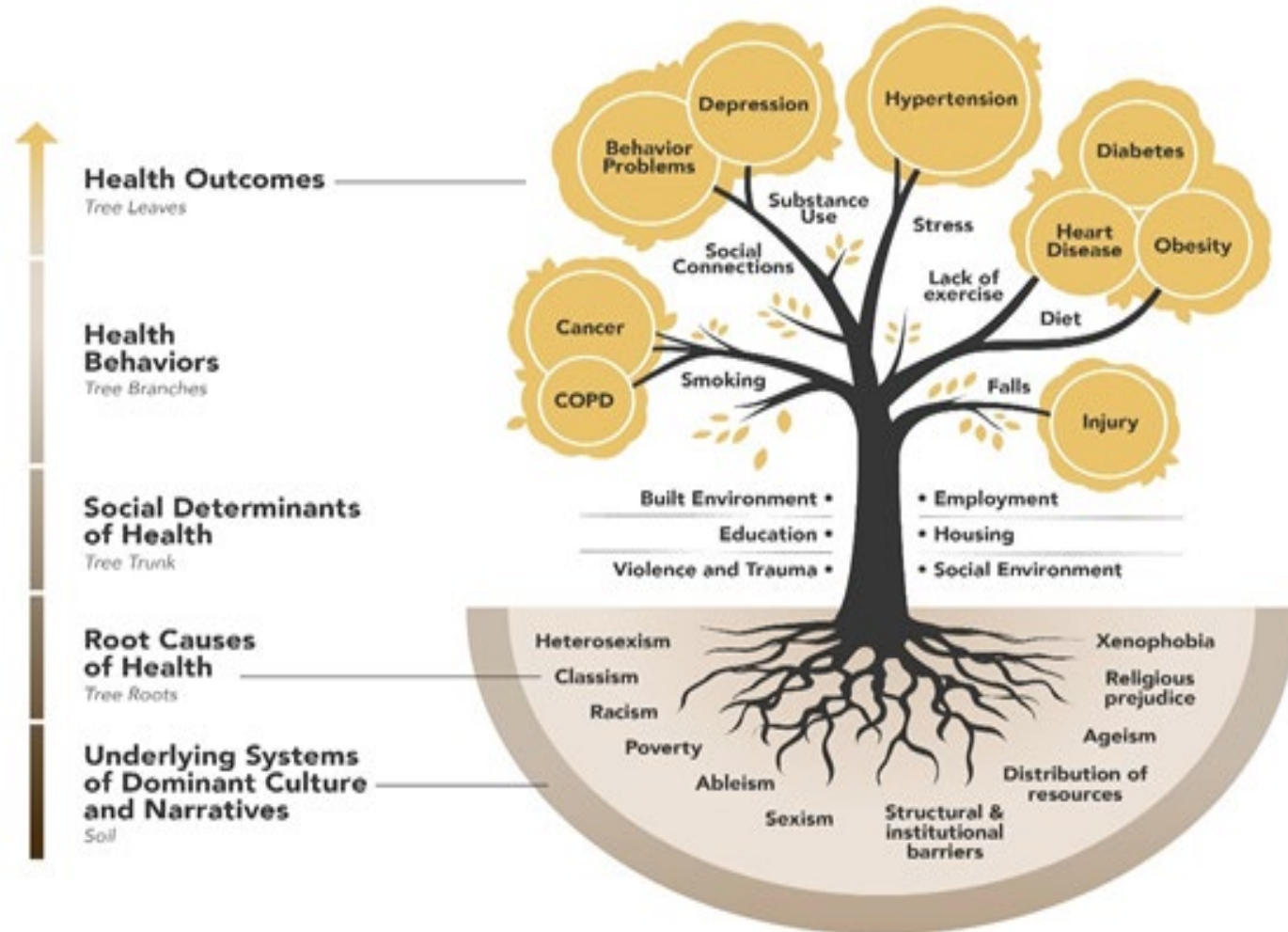


Community Health Equity Initiative (CHEI)



What is the Community Health Equity Initiative (CHEI)?

- ❖ The Community Health Equity Initiative (CHEI) is led by MDPH.
- ❖ Aim: collect data on the causes of health outcomes experienced by Massachusetts residents.
- ❖ CHEI collaborates with community, state, and local partners.
- ❖ Initiative developed and administered state-wide survey in collaboration with partners.



Community Health Equity Survey (CHES)

The Community Health Equity Survey (CHES) was an anonymous survey that asked about factors that impact health.

- Survey questions were based on the experiences and needs of Massachusetts residents.
- The CHES data is a unique public health data set for Massachusetts.

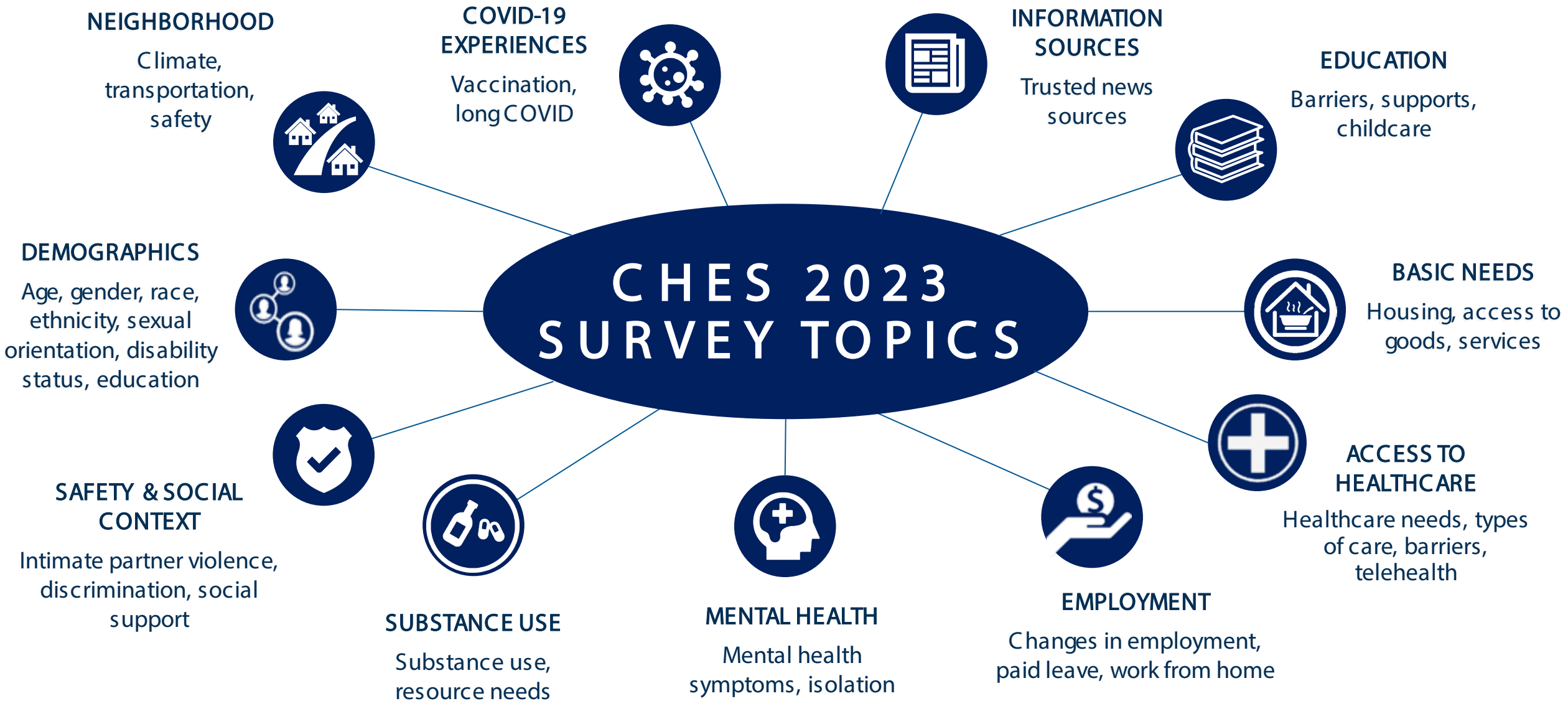
Community Health Equity Survey (CHES) Approach

- Conducted survey (Aug-Nov 2023) with over 18,000 Massachusetts residents ages 14 and over in the final sample
 - ✓ Online + Paper surveys
 - ✓ Survey and promotional materials available in 11 languages (ASL version will launch early 2024)
 - ✓ Survey open-ended questions captured previously unknown needs, barriers, and solutions
- Recruited participants via network of community-based organizations (CBOs) supported by over 80 flexible mini-grants.

CHEI 2023 Communities of Focus

- Older adults (age 60+)
- Parents and caregivers of children and youth with special health care needs
- Parents under 25
- People identifying as LGBTQ+
- People of color (including, American Indian/Alaska Native, Asian American/ Pacific Islanders, Black, and Hispanic/ Latino/a/e residents)
- People whose primary language is not English
- People with disabilities
- People with immigration experience
- Pregnant people and parents of young children
- Rural residents
- Veterans
- Youth and young adults (age 14-24)

CHES 2023 SURVEY TOPICS



Using Data for Action



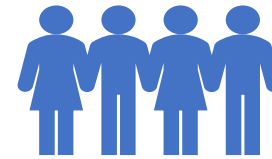
**Planning: using to
prioritize needs and
areas for action**



Grant proposals



Advocacy



**Understand the
community
experiences**



**Needs
assessments**

Data Interest



What is your region and topic of focus on projects?



Interested in a particular demographic's data?



Alignment with the goals for your region?

MAPC's Public Health Team is collaborating with MDPH!

Next Steps

Connect with us!

A 30-minute meeting to discuss data interest.

We provide data reports for your city/town.

Example Data Report

| A | B | C | D | E | F | G | H |
|--------------------------------------------------------------------------------------------------------------|-----------------------------------|--------|---------------|-----------|--------------|------------------|-------------|
| Question: [Adults] In the past 12 months, did you have trouble paying for any of the following? ¹ | | | | | | | |
| Trouble paying for basic needs, past year ¹ : | | | | | | | |
| n=726 | | | | | | | |
| | | % Food | % Health care | % Housing | % Technology | % Transportation | % Utilities |
| Race | American Indian or Alaska Native | * | 12.5 | 12.5 | * | * | 12.5 |
| | Asian or Pacific Islander (nH/nL) | 2 | 0.6 | 2 | 1.3 | 1.35 | * |
| | Black or African American (nH/nL) | 16.9 | 8.4 | 22 | 13.6 | 15.3 | 16.9 |
| | Hispanic or Latine/a/o | 9.3 | 12.5 | 3 | 9.3 | 9.3 | 15.6 |
| | Middle Eastern or North African | * | * | * | * | * | * |
| | Multiracial (nH/nL) | * | * | 16.7 | * | * | * |
| | White (nH/nL) | 3.6 | 2.3 | 2.8 | 0.4 | 1.4 | 2.1 |
| Preferred Language | English | 5.1 | 3.2 | 5.1 | 2 | 2.5 | 4.1 |
| | Language Other Than English | 4.7 | 4.7 | 5.3 | 3.3 | 6 | 3.3 |
| <i>Percentages presented in this table are unweighted.</i> | | | | | | | |
| ¹ Asked on 2 splits (~50% of respondents) | | | | | | | |
| A * symbol indicates that data are not reported due to low count (n<5) or sample size (n<30) | | | | | | | |



ANY QUESTIONS?



THANK YOU!

