



Accelerating Climate Resilience Municipal Grant Program Webinar

May 1, 2025



Meet the Team!



Van Du
Assistant
Director of
Environmental
Planning



**Francelis
Morillo Suarez**
Clean Energy and
Climate Planner II



Kat Kobylt
Senior
Environmental
Planner

Webinar Agenda:

- ❖ Program Overview and Priorities
- ❖ Grant Types and Timeline
- ❖ Resources and Project Examples
- ❖ Q&A

Program Overview

Accelerate climate resilience in the region by helping municipalities and community partners advance strategies that protect people, places, and communities from the impacts of climate change

- ✓ Deploy actionable interventions through local projects, policies, and strategies.
- ✓ Facilitate long-term changes and readiness for climate change impacts.
- ✓ Advance climate equity, regional coordination, and social cohesion.



ACR Program Priority Areas



Nature-based solutions for climate resilience



Contributions to social resiliency or cohesion



Innovative financing or infrastructure investment models



Municipal climate resiliency policy



Combined mitigation and adaptation strategies



Capacity building through coalitions or convenings



Local food systems or agricultural resiliency measures



District-scale climate resiliency pilots



Public outreach, marketing, artistic, cultural projects to advance knowledge & action

Examples of Climate Action

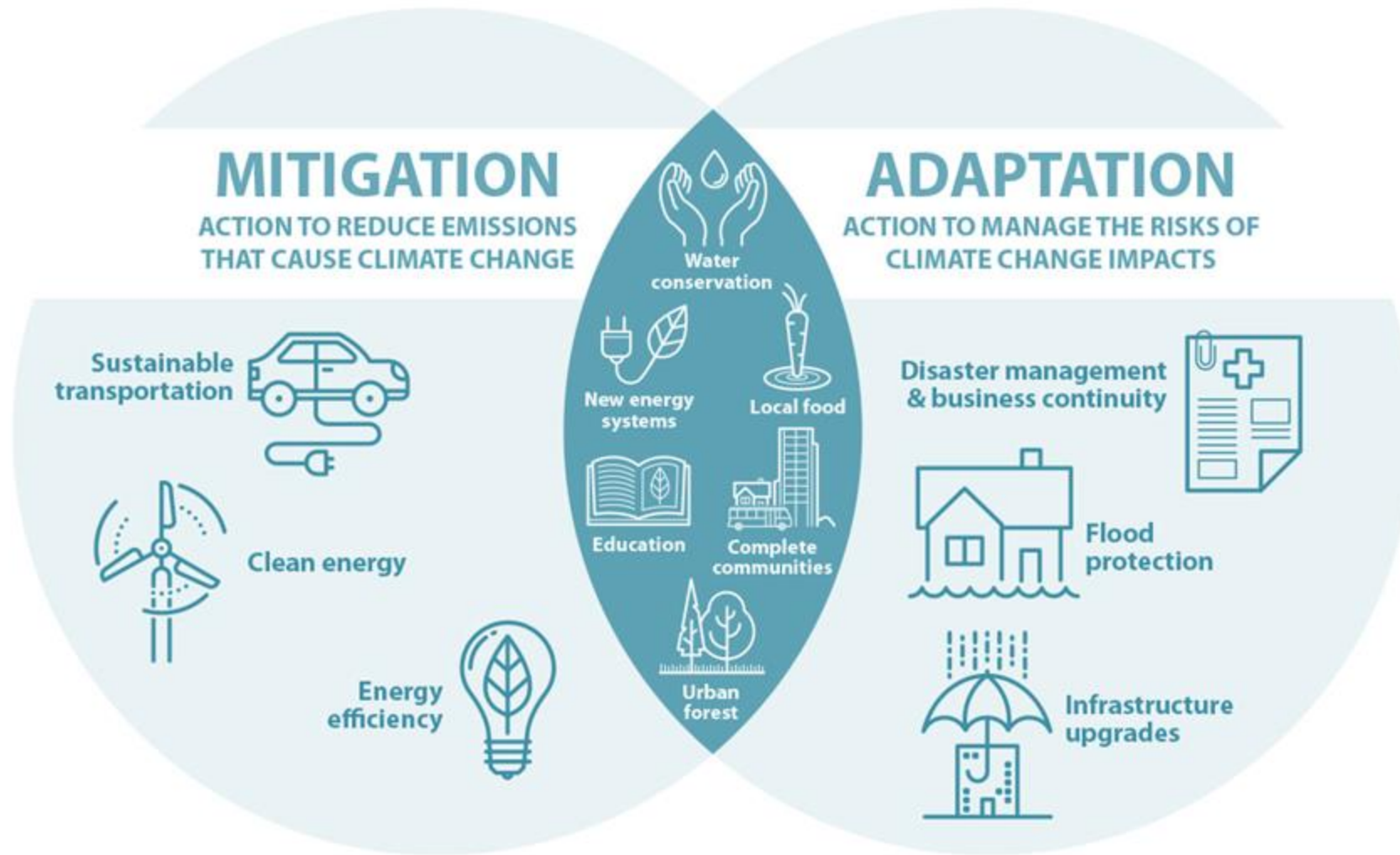
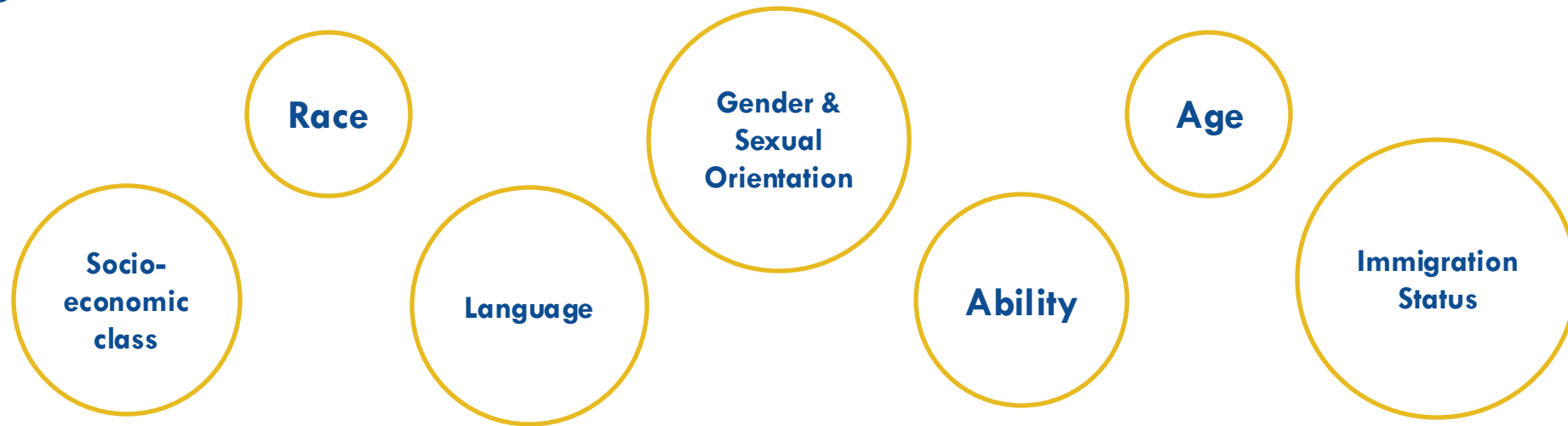


Image credit: City of Calgary (CAN) Climate Change Program

Equity and Climate Resilience

Not everyone is affected equally by climate change. Existing social factors and inequities shape how people experience climate impacts and climate adaptation strategies.



MAPC seeks to elevate projects that will advance climate equity, regional coordination, and social cohesion particularly for populations or neighborhoods most vulnerable to climate change.

Centering Equity in Your Projects

For each project, consider:

**Who has been
historically
impacted by this
issue?**



**Who will be most
impacted by the
types of changes
to our climate we
expect to see?**



**How will the
benefits of this
strategy be
distributed? And
any harms?**



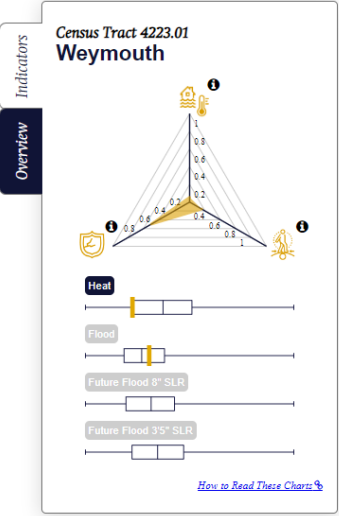
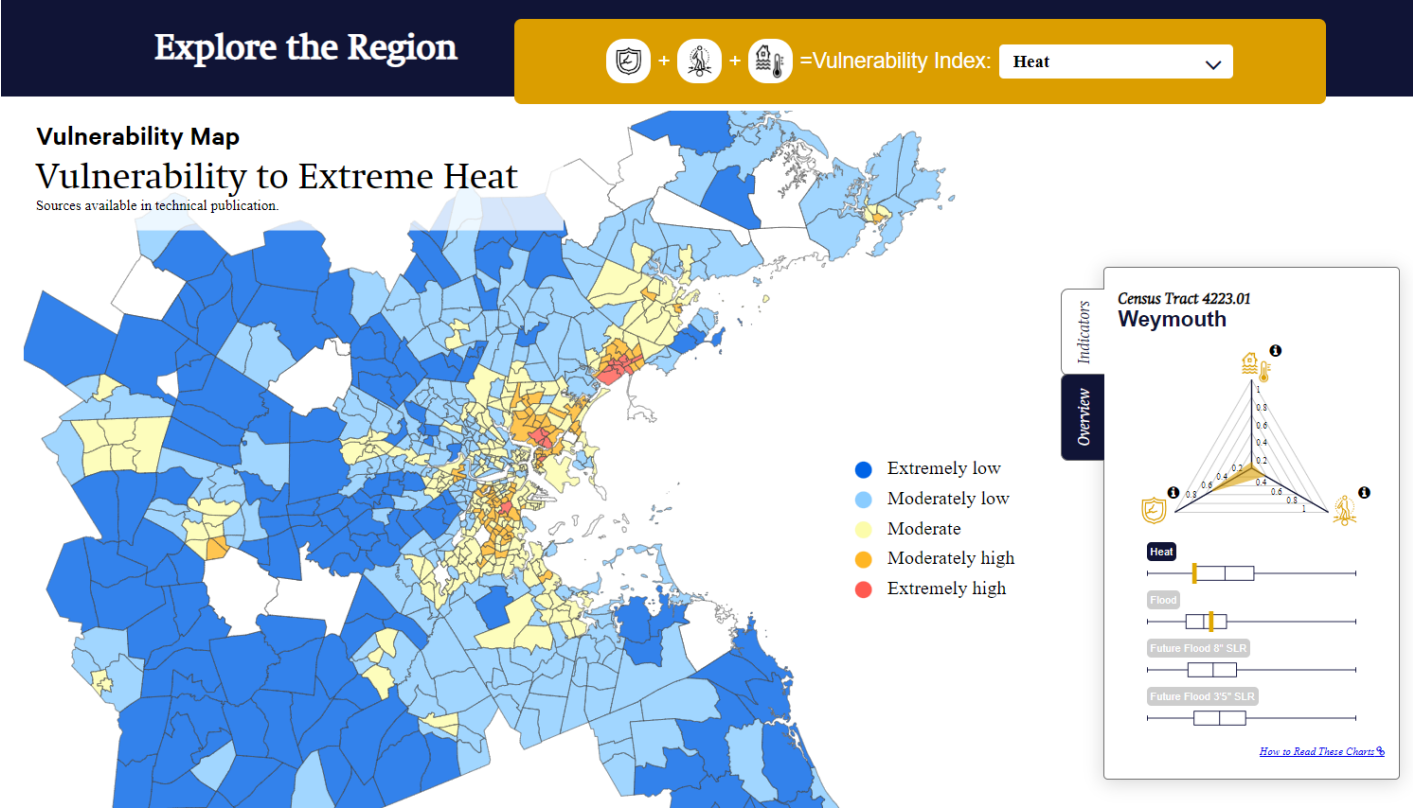
**Whose voices need
more
representation
in decision making
on this strategy?**





Tools & Resources

MAPC's Municipal Net
Zero Playbook's
Framework for Equity


MAPC's Climate Vulnerability Index for Metro Boston

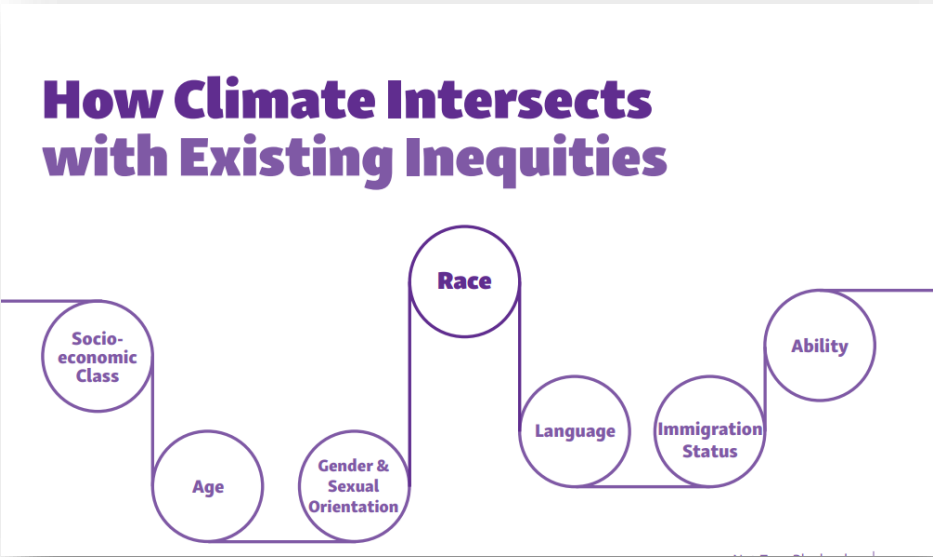




Framework
for Equity

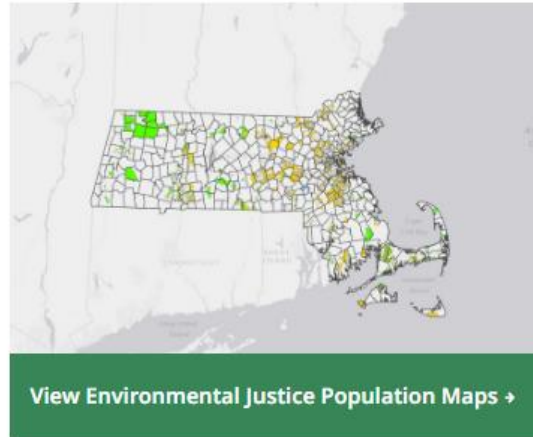
Written by Nicole Sanches, Clean Energy Coordinator
Designed by Kit Un, Visual Designer






Tools & Resources

MA Office of Environmental Justice & Equity - Mapping & Engagement Resource





MVP
Municipal Vulnerability
Preparedness

Guides for Equitable and Actionable Resilience (GEAR)

GEAR provides Massachusetts communities access to data and guidance to assess climate change impacts, as well as actions and case studies for building community resilience. Provide feedback: info.resilientma@mass.gov.

*Municipal Vulnerability Preparedness (MVP)'s
Guides for Equitable and Actionable Resilience
(GEAR)*

Centering Equity in Your Projects (cont.)

Resources:

- MAPC's **Climate Vulnerability Index for Metro Boston** <https://climate-vulnerability.mapc.org/>
- MAPC's Municipal Net Zero Playbook's **Framework for Equity** https://www.mapc.org/wp-content/uploads/2020/03/03052020-Playbook_Framework-for-Equity.pdf
- MA Office of Environmental Justice & Equity - **Mapping & Engagement Resources** <https://www.mass.gov/orgs/office-of-environmental-justice-equity-oeje>
- Municipal Vulnerability Preparedness (MVP)'s **Guides for Equitable and Actionable Resilience (GEAR)** <https://resilient.mass.gov/GEAR>

Resilience Community of Practice

- ✓ Workshops and site visits
- ✓ Member directory

- ✓ News & Updates



Accelerating Climate Resilience Speaker Series

Conversations with experts and practitioners from across the country who can speak to the ways they are perceiving and advancing resilience.

Past events include conversations about the effects of sea level rise on municipal budgets, climate resilience and racial justice, building social resilience through art, and empowering youth movements on climate.



Our Speakers



Pooja Tilwawala

Youth Engagement Manager
for The Climate Initiative;
Executive Director of the
Youth Climate Collaborative



Daniela Kunkel-Linares

Youth Environmental
Activists (YEA!) Coordinator
for Climate Generation



Simone Colburn

Co-Founder of Spring
Forward



FY26 ACR Invitation for Proposals

Accepting applications!

**Now open to Non-Municipal Leads with 501(c)(3) status*

Deadline to submit:

May 30, 2025, by 5PM

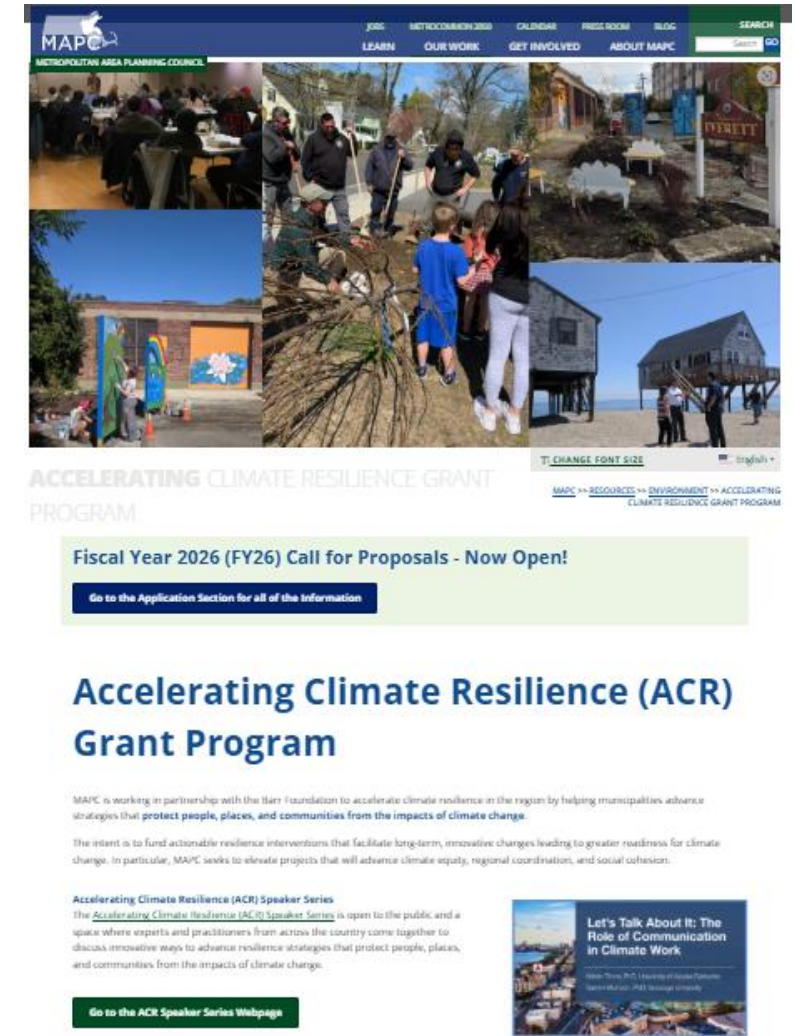
****Online Submission****

15-month projects, up to \$50,000 per project

21-month projects up to \$125,000 per project

Eligible project types:

- Technical assistance or design
- Capital, construction projects
- Capacity building initiatives



Visit www.mapc.org/acceleratingresiliency to download forms.

Non-Municipal Led Applications

- Eligible organizations are defined as local 501(c)(3) community-based organizations (CBOs), tribes, and Indigenous communities.
- CBOs without 501(c)(3) status are encouraged to partner with their municipality to submit an application.
- To qualify for grant review and selection, non-municipal led applications must include a letter of support from a municipal staff member or official.

FY26 ACR Grant Timeline

	Deadline
Expression of Interest Form (EOI) / Office Hours	March 24 – April 14, 2025
FY2026 Invitation for Proposals Open	April 18, 2025
Informational Webinar	May 1, 2025, 3PM
Workshop for Non-municipal led applications	May 6, 2025, 12PM
Proposals Due	May 30, 2025, by 5PM
Award Announcements	August 2025
ACR Project Start & End Date	~August 2025 – November 2026 (15-mo projects) ~August 2025 – June 2027 (21-mo projects)

- ✓ All funded projects will also be required to submit the preliminary scope update and mid-year and final reporting

**This is a reimbursement type grant*

New This Year: 3 Month Preliminary Period

Grant contract
completed

Grantees work on
3 months of final
planning (i.e.,
continue
community buy in,
meet with project
partners, research
procurement
needs, etc.)

Updates to scope
submitted to
MAPC

MAPC approves
updated scope

12 month or 18
month of project
timeline continues

**Questions about the grant program
and/or FY26 application process?**

Evaluation Criteria

- Target at least one of the nine ACR Program Priorities
- Identify one or more specific climate risks and how the project will strengthen resilience
- Demonstrate feasibility through an achievable scope of work and timeline, project team capacity, and realistic budget
- Be designed and implemented with an equity lens
- Demonstrate meaningful engagement and support from the public, or a clear path for generating public support
- Create opportunities for learning, replication, and the development of best practices.
- Demonstrate regional collaboration

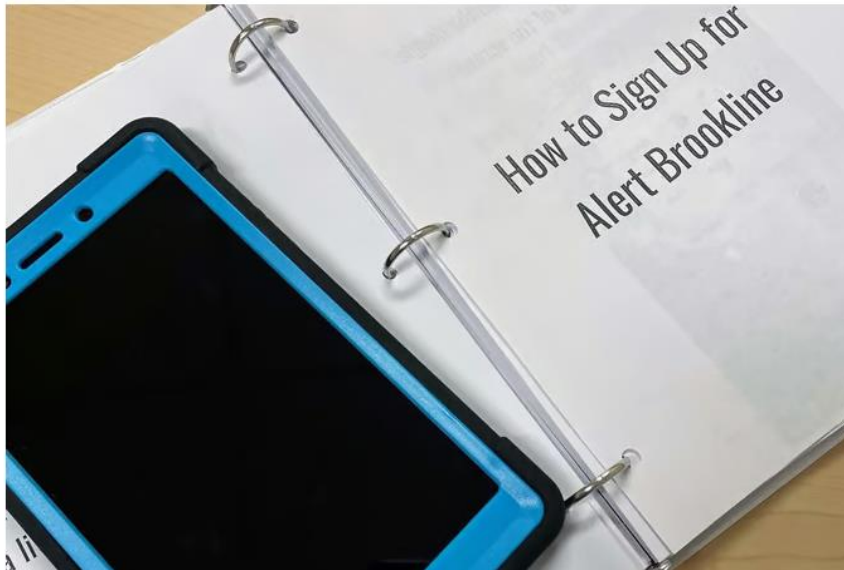
Projects that advance climate equity and directly benefit climate vulnerable populations are given higher priority



Improvements to social resiliency or cohesion

Town of Brookline Offers 'Tech Buddies' Program To Supply Low-Income Seniors with Tablets and Internet Access Amid Pandemic

NOVEMBER 29, 2021 BY JGPRROBERT





Capacity building through coalitions or convenings



Exploring synergies between climate adaptation and mitigation and other co-benefits

District-scale pilots



Chelsea is Building a Community Microgrid!

This project will help you and your neighbors stay safe in a power outage. Using clean sources of energy, we are creating a *microgrid*, which will provide reliable electricity to participating buildings even when the grid has an outage!



During the really hot summer days, what do you do to stay cool? Where would you go if you had no power?



Resilience in Chelsea

¿Cuáles son sus principales necesidades en el caso de un apagón eléctrico?

In the case of a power outage, what are your most important needs?

¿Qué podemos implementar ante un desastre climático/ ambiental de nuestra respuesta a la pandemia?

What can we implement from our pandemic response to a climate/ environmental disaster?

Local food systems or community agriculture resiliency measures



Outreach, marketing, or arts and culture projects that advance climate change knowledge or action.

NEW PERSPECTIVE ON CLIMATE CHANGE: REMEMBRANCE OF CLIMATE FUTURES/ARLINGTON



join us for a
Celebration!

SUNDAY
OCT 31
1-2 PM

Join the teen interns of
Climate Futures/Arlington!
See their project on the Fox Library

SUNDAY, Oct 31, 1-2 outside the Fox Library • NOTE NEW DATE FOR RAIN! • 175 Mass Ave, Arlington
RSVP requested to: ClimateFuturesArlington@gmail.com www.ArtsArlington.org



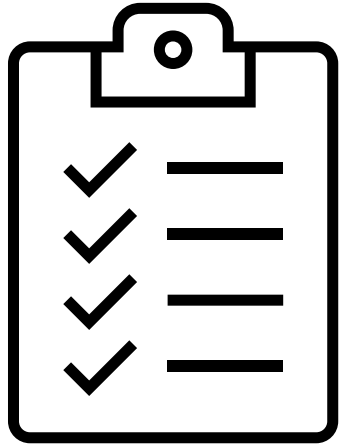
Shade is Social Justice



Check out Appendix C for more potential project examples!

Priority Areas	Grant Type		
	Technical Assistance/Design	Capital	Capacity Building
Nature-Based Solutions	Design, engineering, and/or feasibility of a climate-smart park or playground.	Green Infrastructure retrofit in park.	Research and convene stakeholder group focused urban forestry with carbon trading program model
	GHG accounting of nature-based resources with carbon sequestration potential (e.g., soils, trees, wetlands)	Green Infrastructure installation in an existing park improvement project.	Equity-driven community engagement process on identifying and addressing greatest need for nature-based solutions in a community or neighborhood.
	Open Space and Recreation Plans that prioritize climate resilience.	Collective purchasing (with multiple municipalities) of street trees. Strategic planting of street trees.	Community outreach, training programs to support the development and maintenance of community green spaces (including pollinator gardens, community farms/gardens, food forests, etc.)
	Park Equity Assessment that considers climate and park accessibility.	Increased connectivity of parks, trails, and municipal assets for walking and biking.	
	Hydrologic analysis for stormwater interventions in vulnerable neighborhoods.	Salt marsh restoration project	

Proposal Tips & Recommendations



- Regional collaboration!
- Prioritize climate equity.
- Connect your project with your municipal planning efforts. The grant is to advance implementation of planning efforts.
- Project readiness and capacity are important - partner if you can.
- Leverage other local, state, and/or federal funds.
- Community support can make or break a project.
- Be clear of your proposed deliverables.

Questions & Discussion

Upcoming: Writing Workshop for Non-Municipal Applications

- Non- Municipal entities applying as a lead applicant are invited to our Writing Workshop
- May 6th, 12-1 pm
- Register today!



Photo Credit: City of Everett



STRENGTHENING PATHWAYS

a national conversation about health research from
THE COLLECTIVE

MAPC in partnership with the Center for Climate and Health at Boston University School of Public Health (BUSPH), is hosting a regional symposium titled *Fostering Collaborations: A Symposium to Advance Equitable Heat Health Actions*.

The symposium aims to engage with and foster constructive dialogue among key stakeholders across sectors. By bringing together experts and leaders from academic, state and municipal governments, healthcare institutions, community-based organizations, foundations, and advocacy groups in the region, we will help bridge the gap between research and practice.

Date: June 18, 2025

More information forthcoming!

Stay Tuned!

Upcoming Release of the Climate Resilience Playbook

EEA, MAPC and PVPC are developing a **Climate Resilience Playbook** to assist communities across Massachusetts with planning and implementing projects, policies, and programs that connect and advance both social and environmental resilience. This project is generously supported by the Barr Foundation.

The goal of this Playbook is to support communities with:

- Centering equity, community voices, knowledge and partnerships when prioritizing climate efforts;
- Exploring creative and innovative approaches as well as best practices to advance local climate efforts from planning into implementation; and
- Tailoring these climate solutions for all communities across the Commonwealth, from small rural towns to urban and coastal cities.

Scan Code to
Visit Our
Project Webpage!



mapc.org/resource-library/climate-resilience-playbook



The **Climate Resilience Playbook** is tentatively scheduled to be published this Spring. Stay tuned for more information!

For questions, please contact:

Van Du (vdu@mapc.org)

Emma Zehner (ezehner@mapc.org)

A scenic view of a city skyline across a body of water. In the foreground, several people are kayaking on the water. The middle ground is filled with lush green trees and vegetation. In the background, a city skyline with various skyscrapers is visible under a cloudy sky. The text "Thank You!" is overlaid in the center of the image.

Thank You!