

MAY 12, 2025

METRO MAYORS Climate Summit

10 Years of Climate Action

Agenda

Welcome Remarks

Metro Mayors Coalition Climate Roundtable

Energy Transformation Panel

Closing Remarks

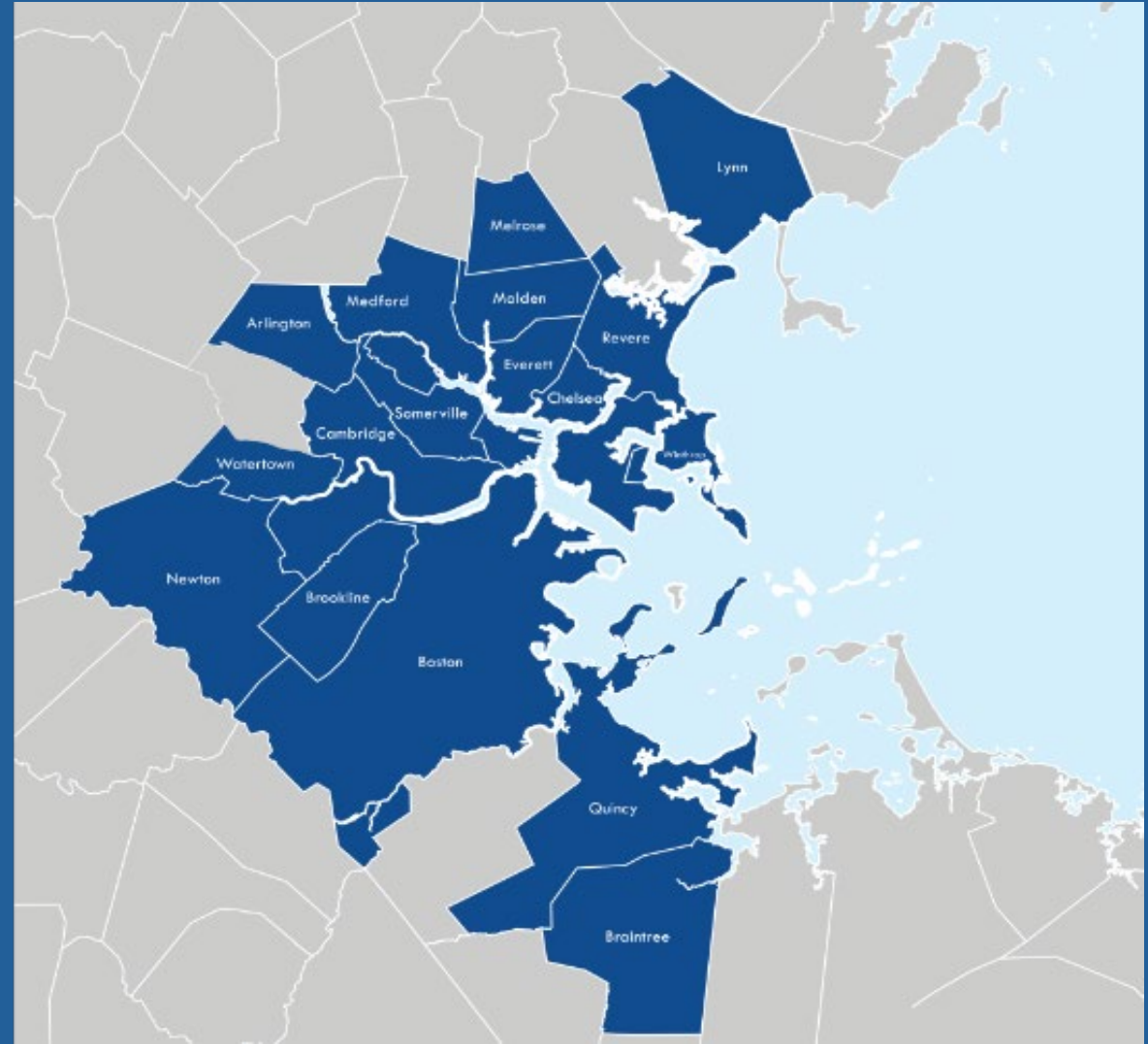
Ceremonial Signing

Strategic Priority 1

ENHANCE LOCAL ALIGNMENT AND CAPACITY BUILDING

Metro Mayors Coalition

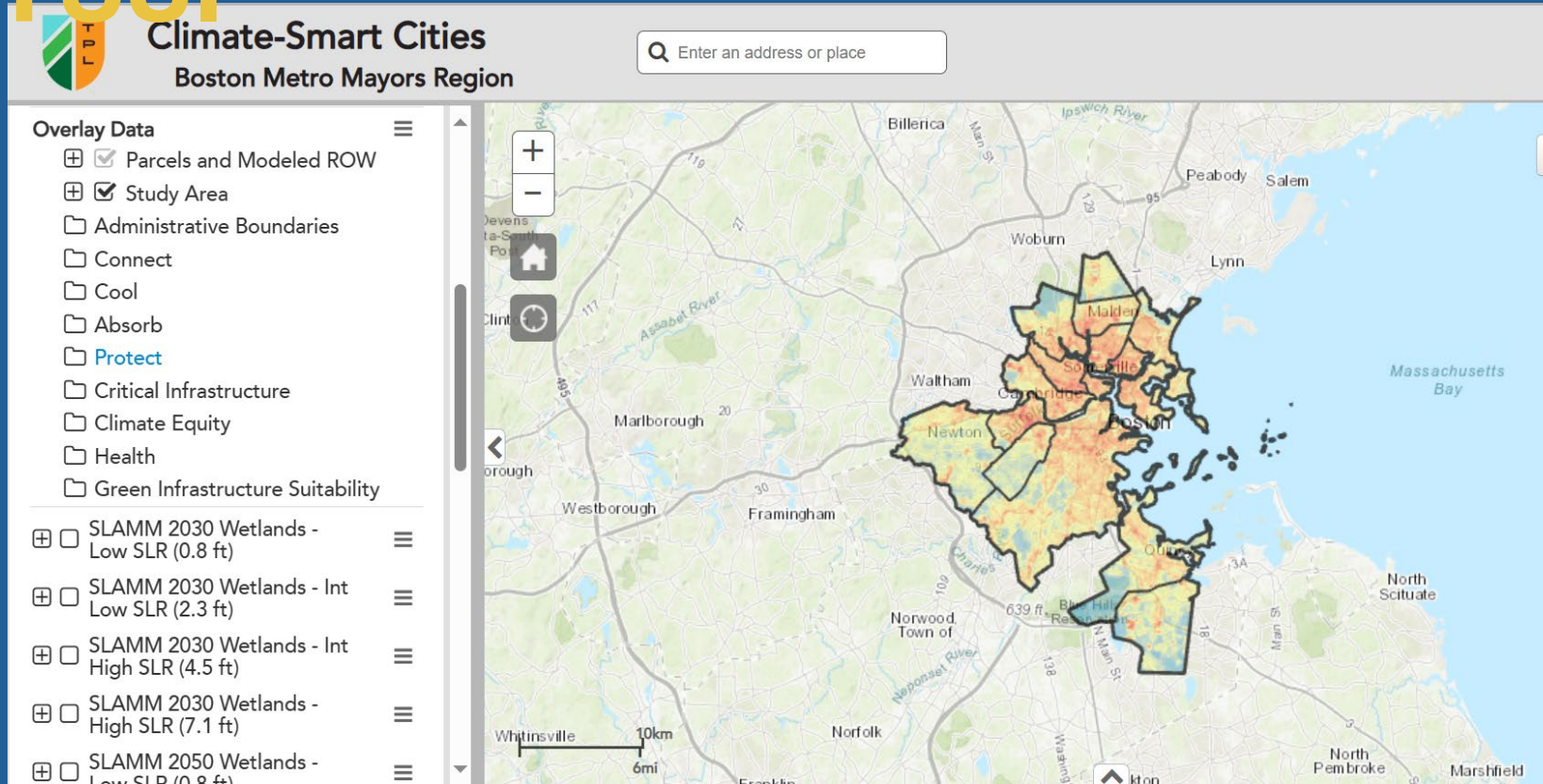
CLIMATE TASKFORCE



Non-Profit and Institutional Partnerships



Climate Smart Cities Metro Boston Tool



Metro Mayors Coalition

CLIMATE
TASKFORCE



Goal: Help users consider climate impacts to make decisions, such as green infrastructure siting, and have shared data across municipal boundaries. This tool was available before the State's climate tools.

Strategic Priority 1

Local Alignment & Capacity Building

Toolkits & Webinars

Climate Resilient Land Use Strategies



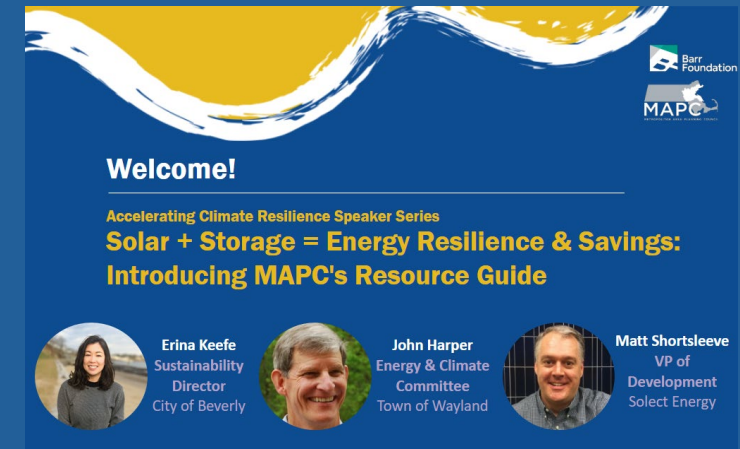
Goal: Capture emerging and best practices of climate resilient zoning in practice to integrate climate resilience into local land use policy and planning

Cool Roofs Educational Toolkit



Goal: Expand awareness and adoption of cool roofs through templates of FAQs, factsheets, case studies, and educational webinars.

Solar + Storage Resource Guide



Goal: Planning guidance for municipalities interested in procuring solar + storage.

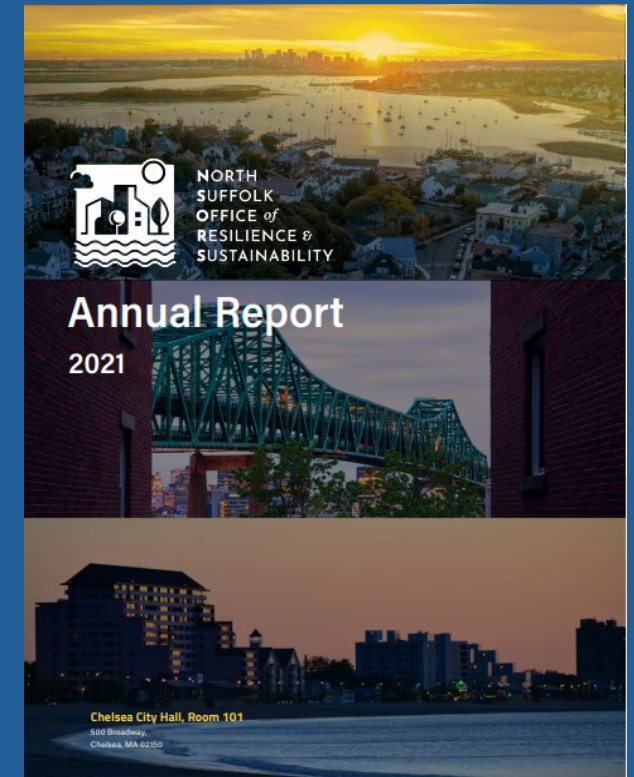
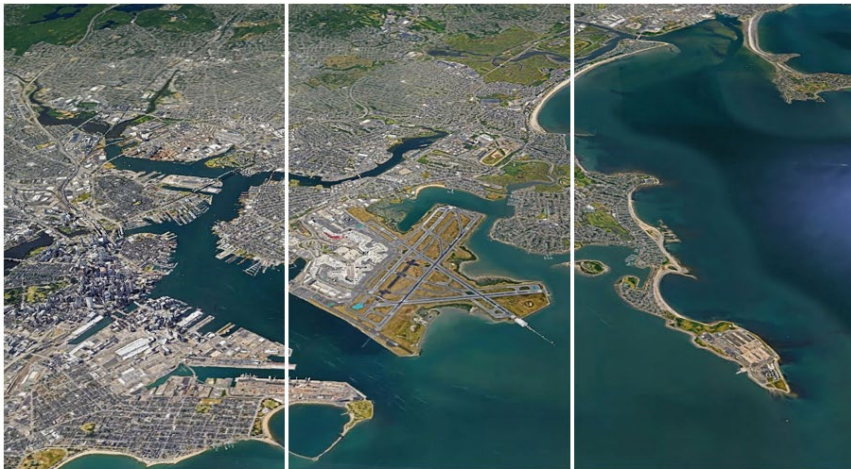
Regional Electric Vehicle Strategy Group



Goal: Bi-monthly Regional EV Strategy Calls to generate creative solutions to increase adoption of EVs across the region. Conversations relate to on-street neighborhood charging, school bus electrification, community-based charging infrastructure, charging at multi-unit dwellings, and electrified personal mobility (e.g., e-bikes, e-scooters,).

North Suffolk Office of Resilience & Sustainability (NSORS)

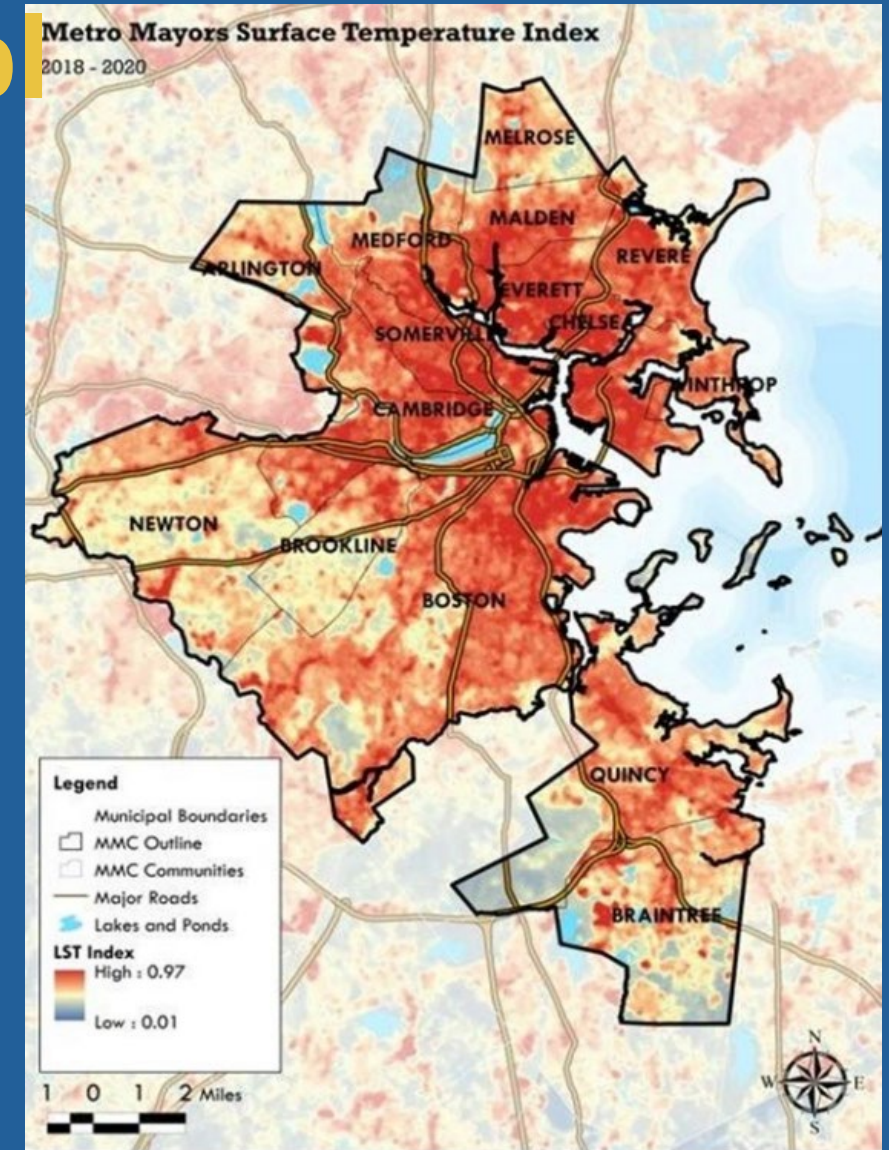
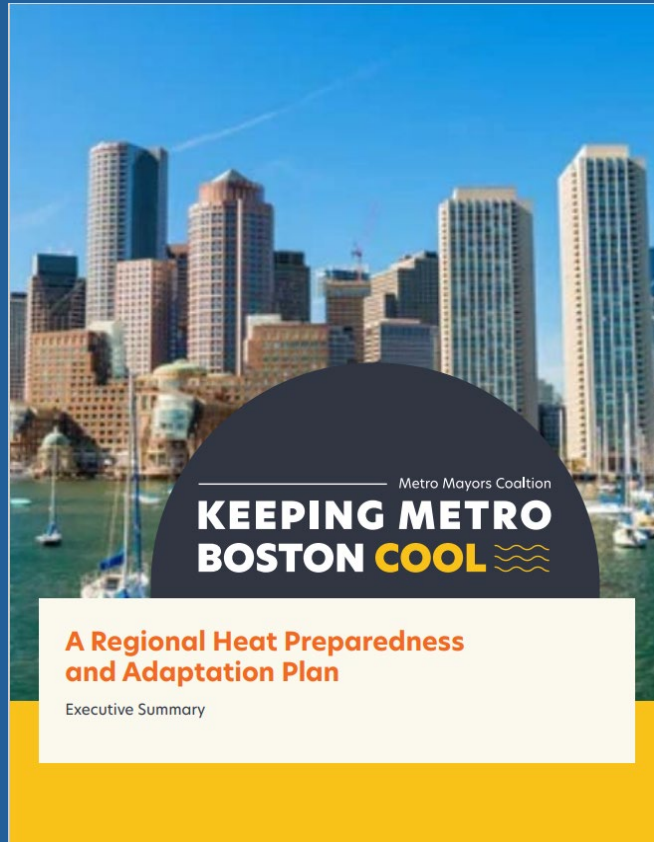
North Suffolk Zero Carbon Action Plan



Strategic Priority 2

MITIGATE HEAT IMPACTS ACROSS THE REGION

Keeping Metro Boston Cool



Goal: Prepare for and adapt to climate-driven extreme heat effects through public health, planning, land use, and other regional actions

Strategic Priority 2


Mitigate Heat Impacts

Cool Roofs Site Suitability Tool

Cooling Down the Neighborhood: The Basics & Benefits of Cool Roofs

What is a Cool Roof?


Cool roofs (also known as white roofs or reflective roofs) are simply roofs designed to reflect more sunlight than a conventional roof. By reflecting more sunlight, the roofs absorb less heat, keeping the building and surrounding area cooler.




Types of Cool Roofs

Cool roofs are versatile and available in various colors and types to suit most buildings. They can be applied as reflective paint (**coating**) or installed as specialized roofing materials (**covering**).

Coating: A reflective coating or paint is applied over an existing structure. Cool roof coatings are easy to apply (e.g., acrylic coating can be done with a brush, roller, or spray), versatile, and relatively inexpensive, but may require more maintenance.



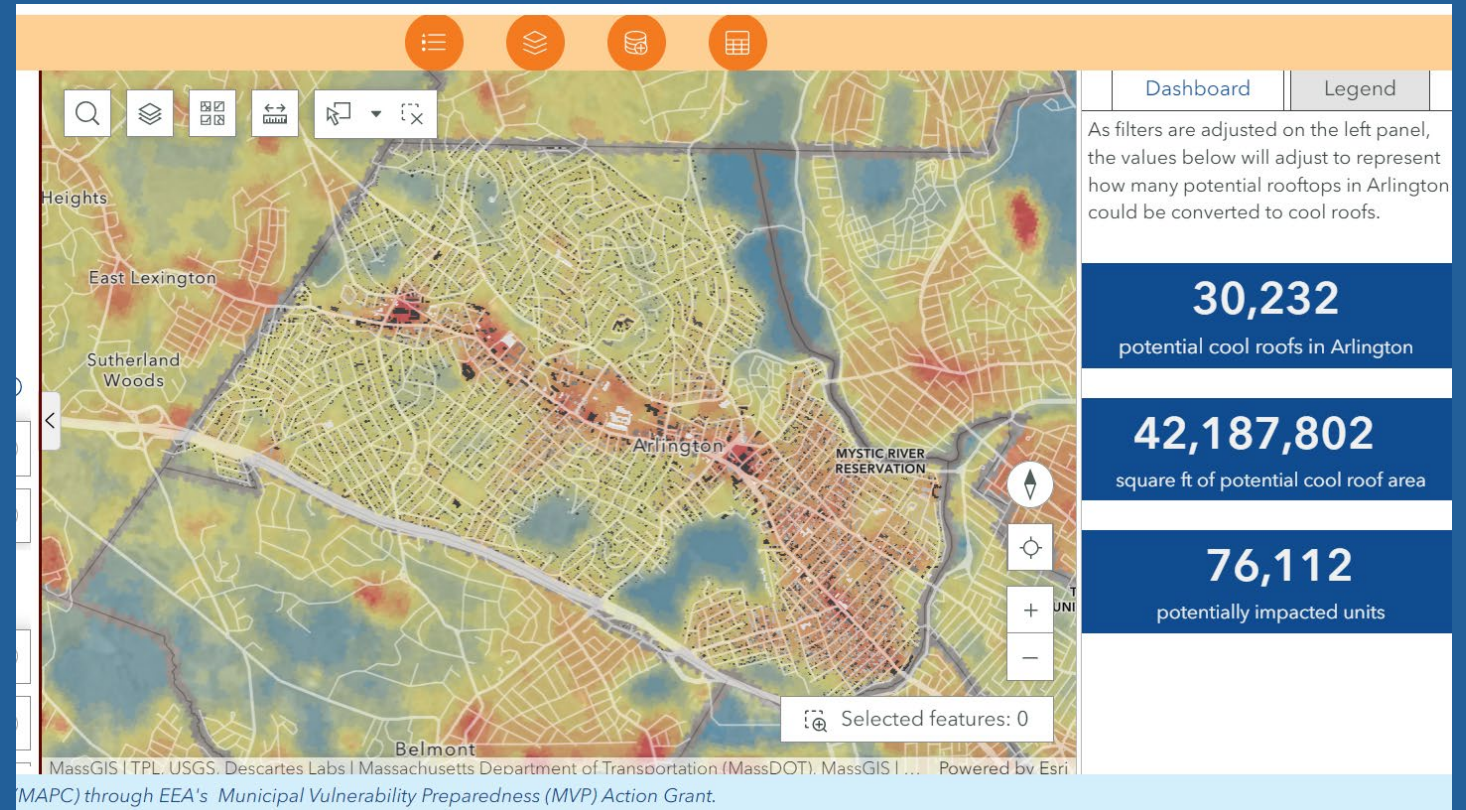


Covering: Coverings are specially designed and typically installed as a replacement for an existing roof. Cool roof coverings are more labor-intensive and require more expensive materials and professional installation but tend to be more durable than coatings.



Benefits of Cool Roofs:

- Reduce energy use and save money.** Cool roofs can reduce the need for air conditioning and fans, leading to savings on energy bills.
- Preserve roof and rooftop equipment.** Cool roofs can help preserve roofs and rooftop equipment, like solar panels or HVAC systems, reducing heat stress.
- Reduce indoor temperature.** Cool roofs help maintain cooler indoor environments, preventing heat-related illnesses.
- Cool down the neighborhood.** Urban areas with dark surfaces and less tree cover are warmer than surrounding areas; cool roofs can help reduce temperatures at the neighborhood level.
- Reduce carbon emissions.** By reducing cooling demand on hotter days, we can reduce carbon emissions and air pollutants from fossil fuels.

For more information, visit mapc.ma/cool-roofs or scan the QR code!



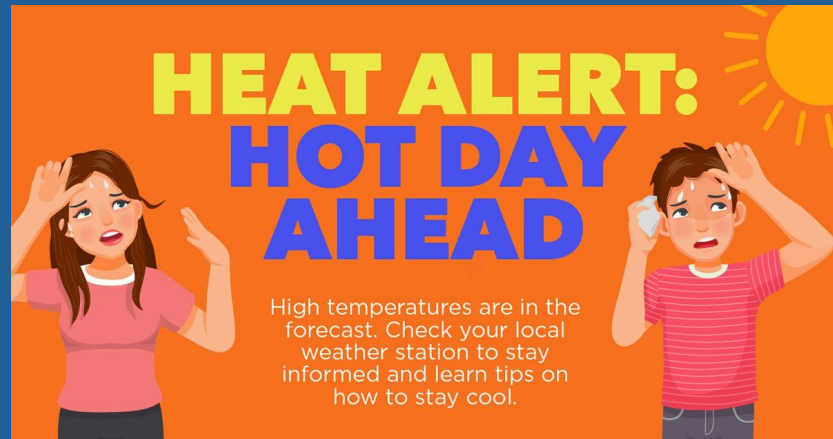
Goal: Develop tools and resources to expand awareness and adoption of cool roofs in.

Strategic Priority 2

Mitigate Heat Impacts

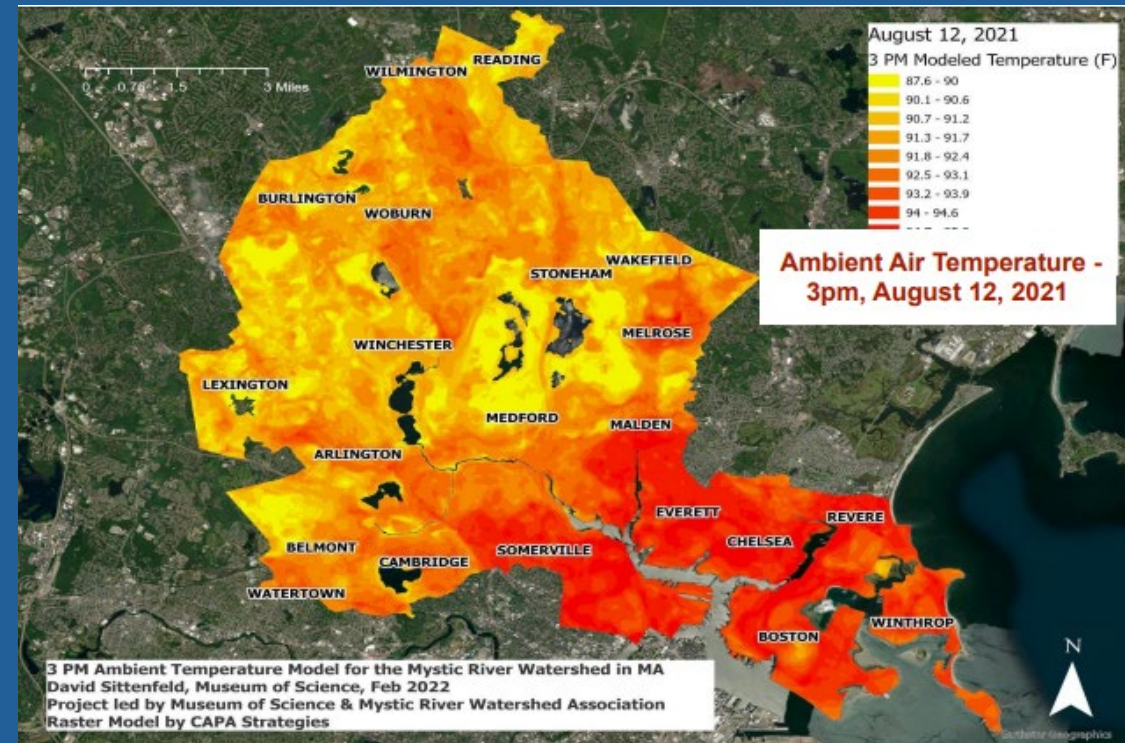
Lower Mystic "Cool Communications"

Chelsea, Everett, Malden, Revere Winthrop



Metro Mayors Coalition

**CLIMATE
TASKFORCE**



Goal: Address communication barriers, build lasting communication networks, equip partners, and motivate protective action

Lynn and Somerville: Community Heat Resilience Project

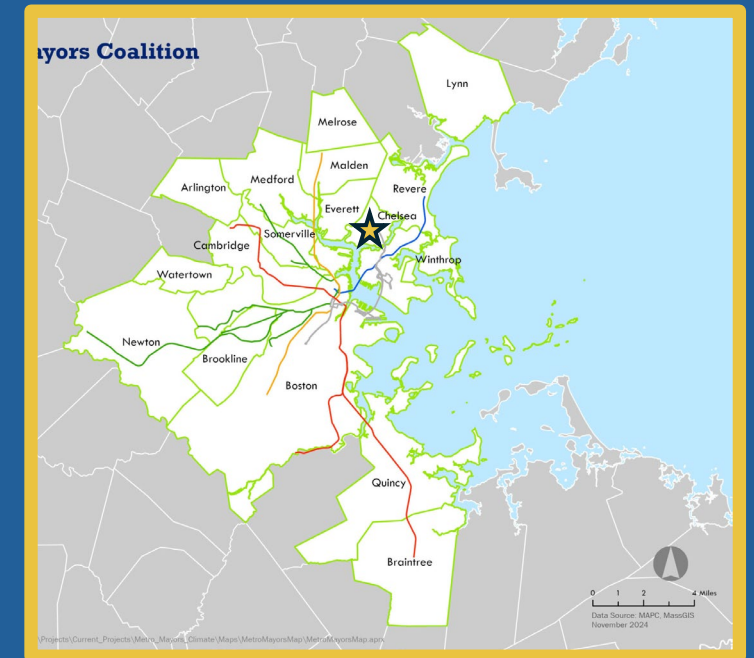


Goal: Partnering with local community-based organizations to design and implement local heat resilience projects.

Chelsea: Cool Block Initiative



Chelsea



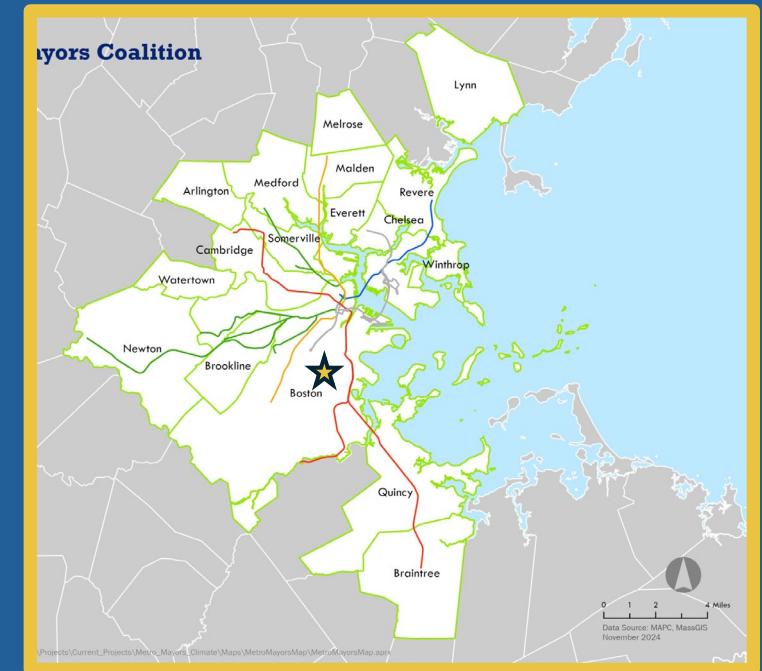
Goal: Reduce UHI Effect with the installation of street trees, bioswales and native plants, white reflective coatings on paved surfaces, new splash pads, shading structures, etc.

Boston: B-COOL Pilot Project



Goal: Provide neighborhood-specific temperature data to improve National Weather Service station data and better inform city officials in declaring heat emergencies and advisories in Boston neighborhoods

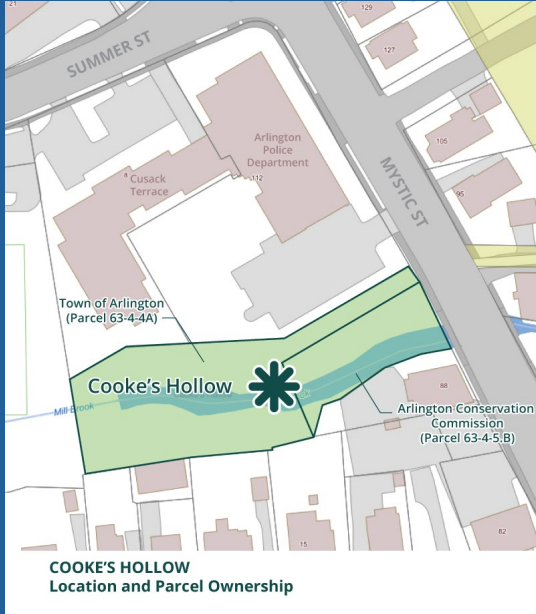
Boston



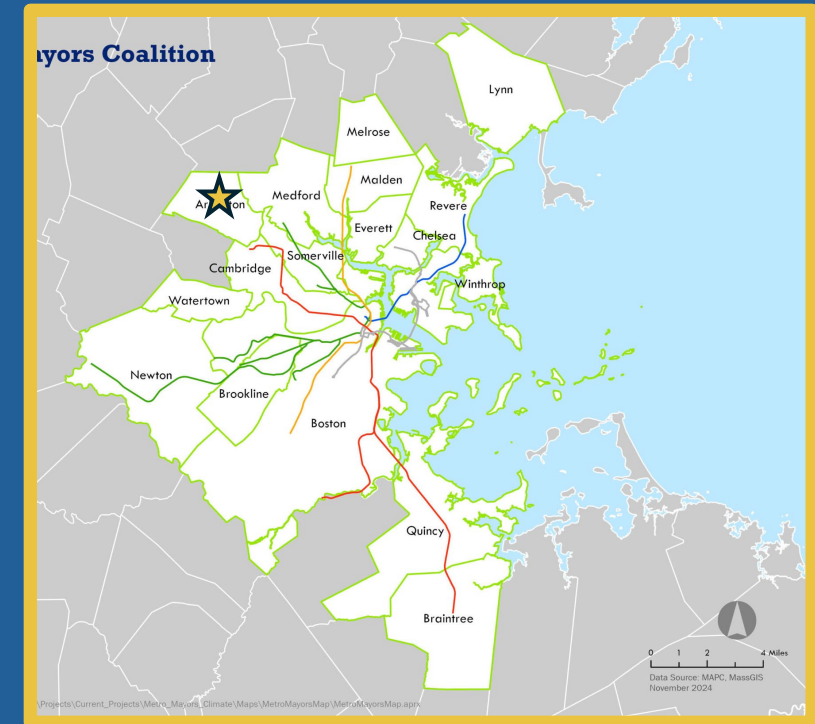
Strategic Priority 3

MITIGATE FLOODING IMPACTS ACROSS THE REGION

Arlington: Cooke's Hollow Revitalization



Arlington



Goal: Develop a climate-resilient open space with accessible amenities that reduces the UHI effect and safely manages floodwaters from the adjacent Mill Brook.

Quincy: Flood Resilience Projects

Furnace Brook Flood Control



Goal: Restore floodplains, increase capacity and resilience for floodwaters, repair culvert, install new stormwater infrastructure, and more.

Beachcomber Park



Goal: New passive park with walking trail, native plants, and improved stormwater management.

Rock Island Cove Marsh Restoration

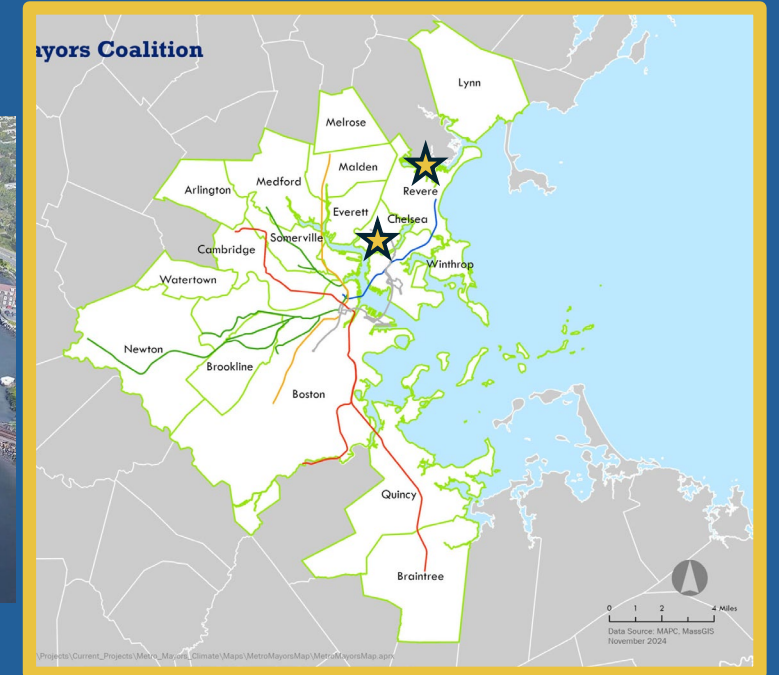


Goal: Improve stormwater/green infrastructure; develop local restoration plans.

Chelsea and Revere: Mill Creek Habitat & Public Access Improvements



Chelsea, Revere

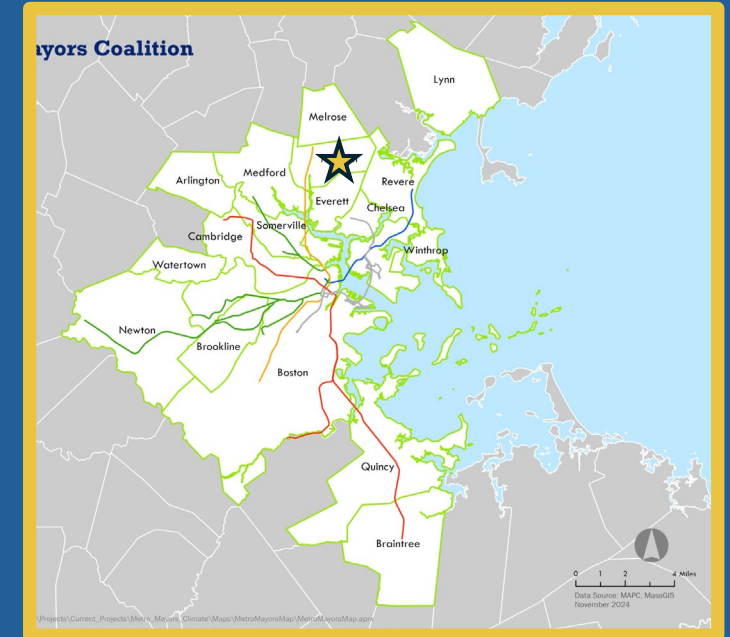


Goals: Increase flood resilience, improve public waterfront access, and enhance in-water recreation for the Cities of Chelsea and Revere.

Malden: Malden River Works



Malden

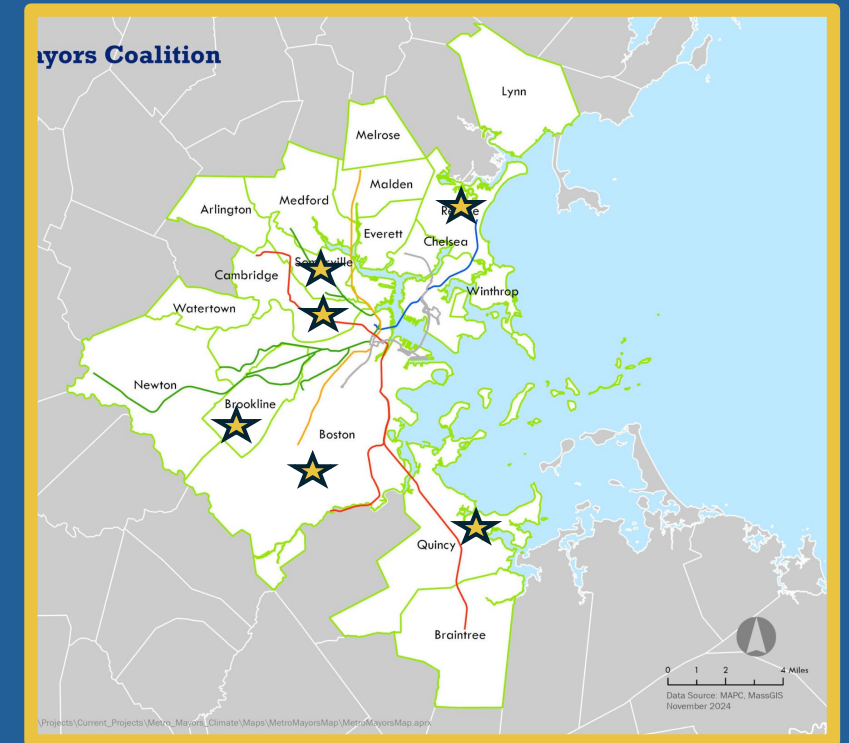


Goal: Create a climate resilient waterfront park for all on the Malden River, in partnership with a diverse coalition of community leaders of color, environmental advocates, and government stakeholders.

Urban Forestry Plans



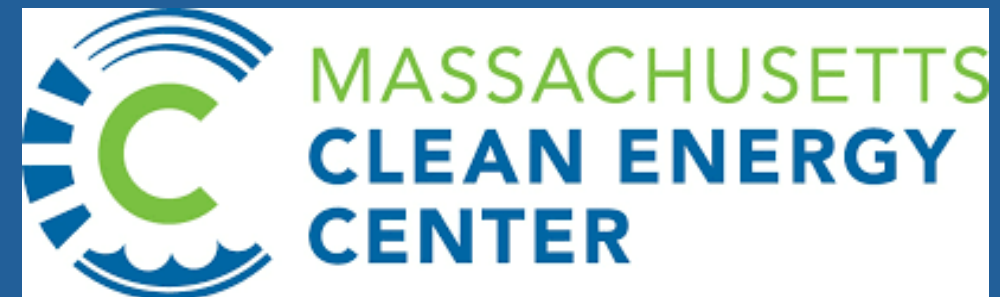
Boston, Brookline, Cambridge,
Somerville, Quincy, Revere



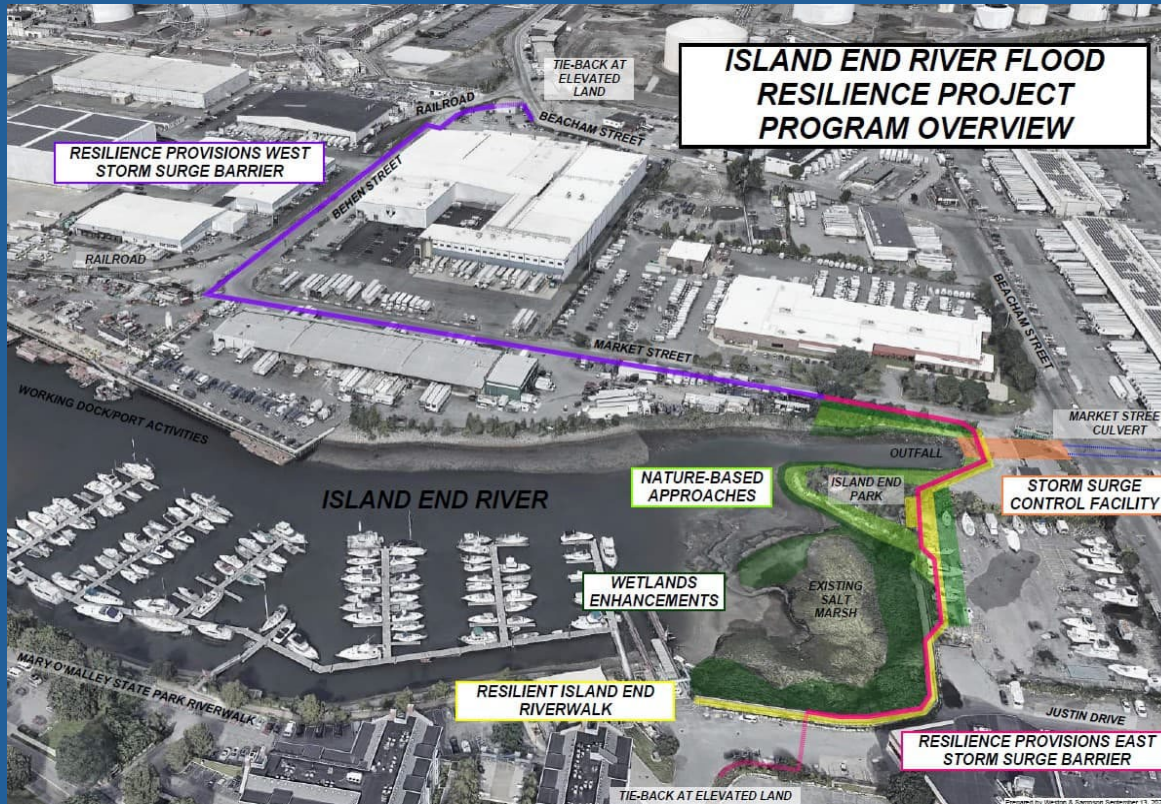
Strategic Priority 4

DEEPEN REGIONAL, STATE AND FEDERAL COORDINATION ON PUBLIC AND PRIVATE INFRASTRUCTURE ACTIVITIES

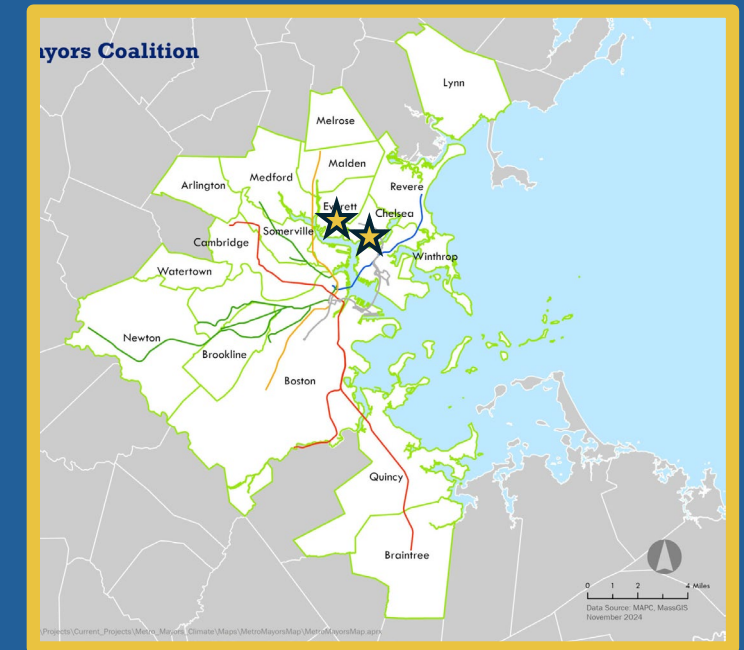
State Agencies Participating in the Taskforce



Multi-Governmental Coordination on Regional Infrastructure: Island End River Flood Resilience Project

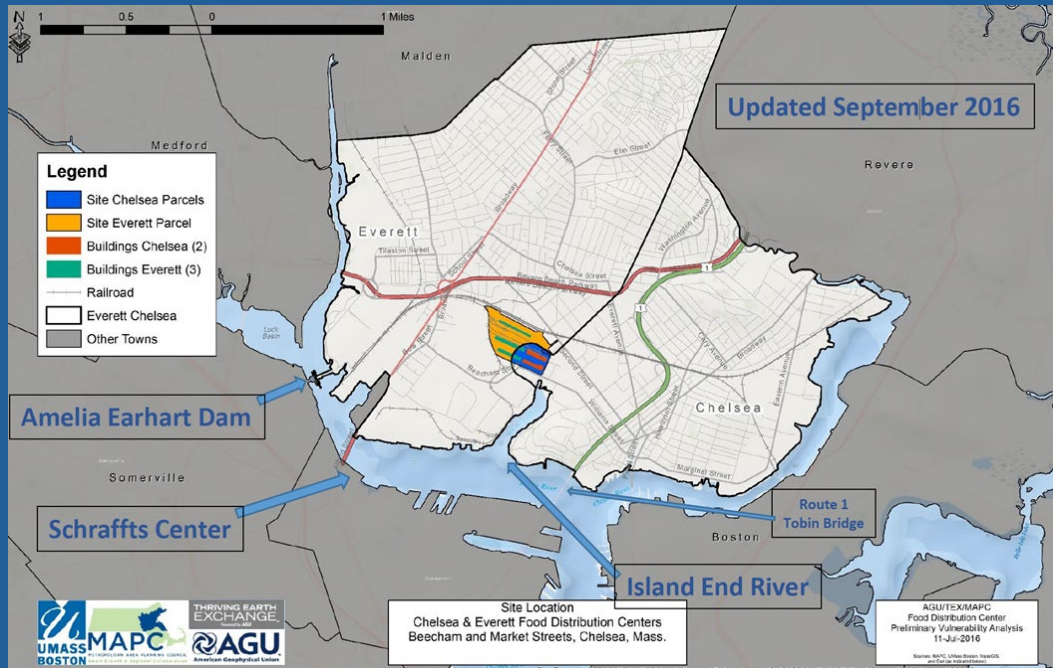


Chelsea, Everett



Construction of a coastal storm surge barrier (flood barrier), storm surge control facility, riverfront nature-based solutions at the Island End River.

Multi-Governmental Coordination on Regional Infrastructure: Amelia Earhart Dam



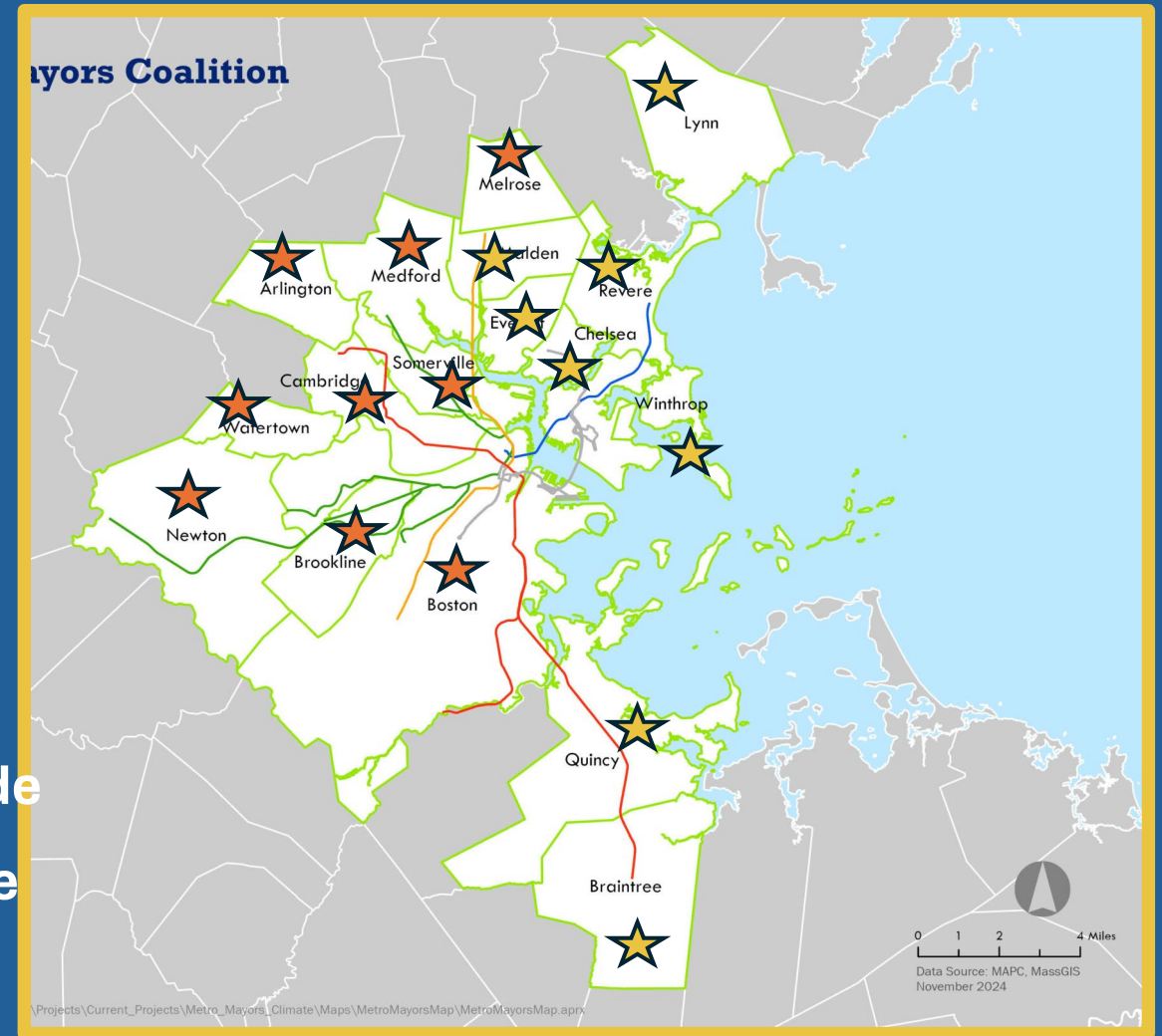
In partnership with City of Cambridge and the Resilient Mystic Collaborative, Metro Mayors successfully advocated to DCR and the State for resilience investments to the Charles River and Amelia Earhart dams to protect from flanking and overtopping during extreme storm event.

Strategic Priority 5

ACHIEVE NET ZERO EMISSIONS BY 2050

Adoption of Stretch and Specialized Code

- ★ - Specialized Code
- ★ - Stretch Code



Leaders in the Community First Partnership



ELECTRIFY EVERETT

EVERETT AHORRA ENERGÍA

MIENTRAS AYUDA A LA COMUNIDAD

¿Quiere reducir su factura de energía? Electrify Everett ayudará a los propietarios de viviendas, inquilinos, arrendadores y pequeñas empresas en medidas de ahorro de energía durante todo el año ofreciendo soluciones de eficiencia energética. Nuestra comunidad se ha asociado con el patrocinador de Mass Save, National Grid, para brindar ahorros de energía a todos los residentes. Juntos estamos trabajando para crear una comunidad más sostenible.

Comience con una Evaluación de Energía del Hogar sin costo. Usted puede ser elegible para:

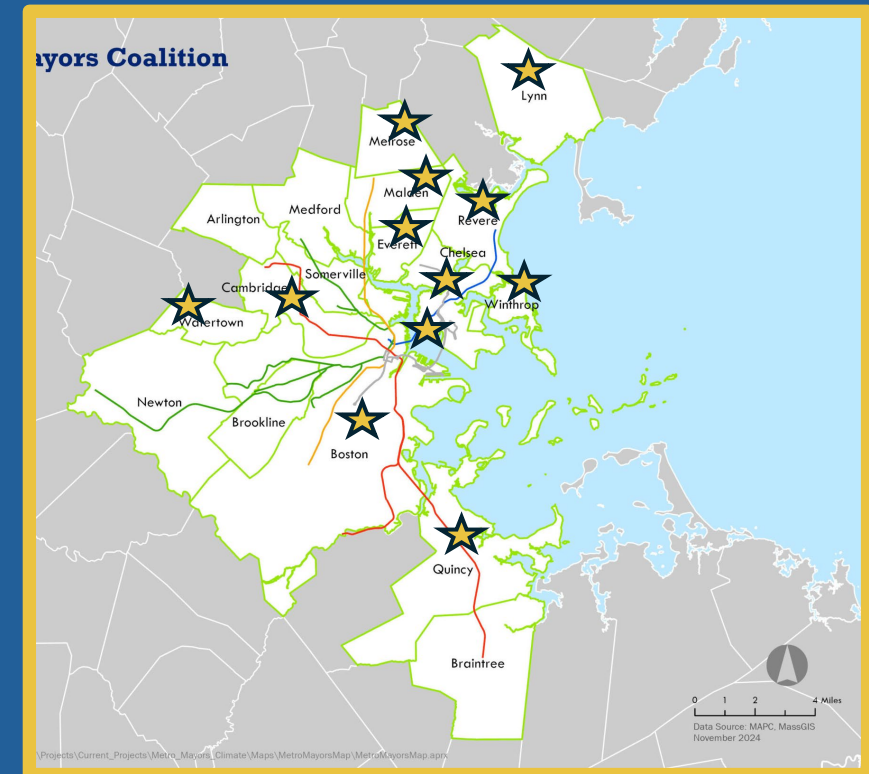
- 75-100% de descuento en mejoras de insulación aprobadas
- Mejoras en el sellado de aire sin costo
- Reembolsos en equipos y electrodomésticos de calefacción y refrigeración de alta eficiencia
- Productos de ahorro de energía sin costo

¡OBTENGA SU EVALUACIÓN DE ENERGÍA DEL HOGAR HOY!

masssave.com/electricity
(617) 765-1414

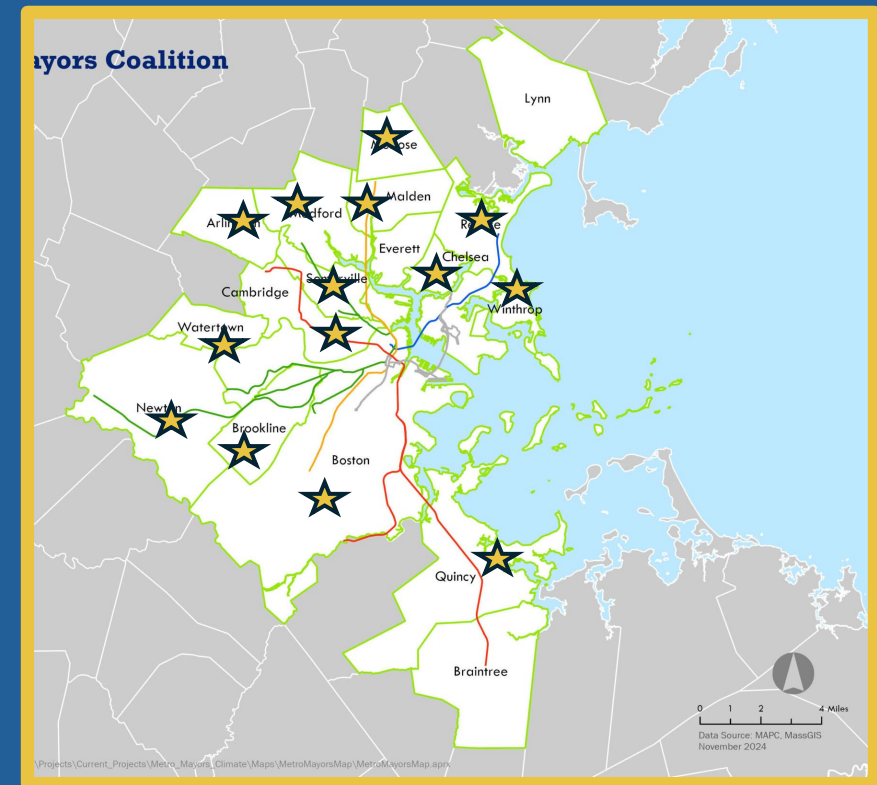
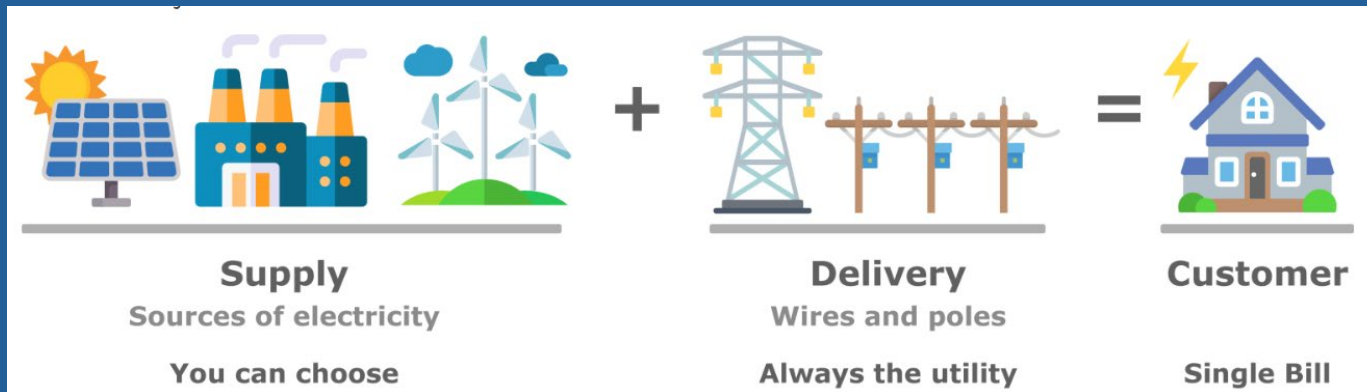
Español

Lynn, Melrose, Malden, Chelsea, Winthrop, Revere, Everett, Arlington, Cambridge, Watertown, Boston, Quincy



Community Choice Electricity/Municipal Green Aggregation

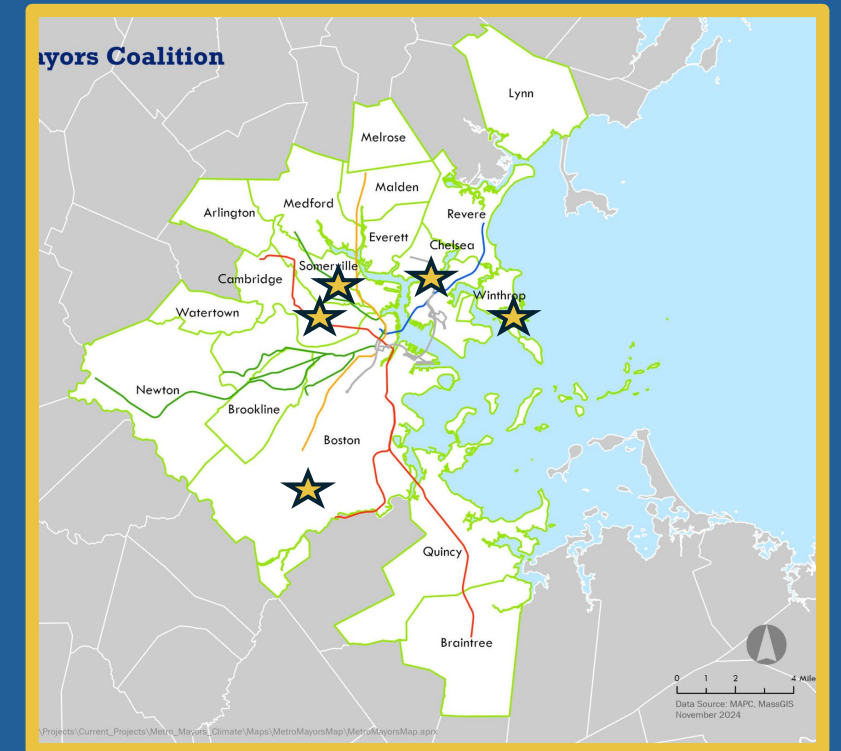
Arlington, Boston, Brookline, Cambridge, Chelsea, Malden, Melrose, Medford, Newton, Revere, Somerville, Quincy, Watertown, Winthrop



National SolSmart Designation



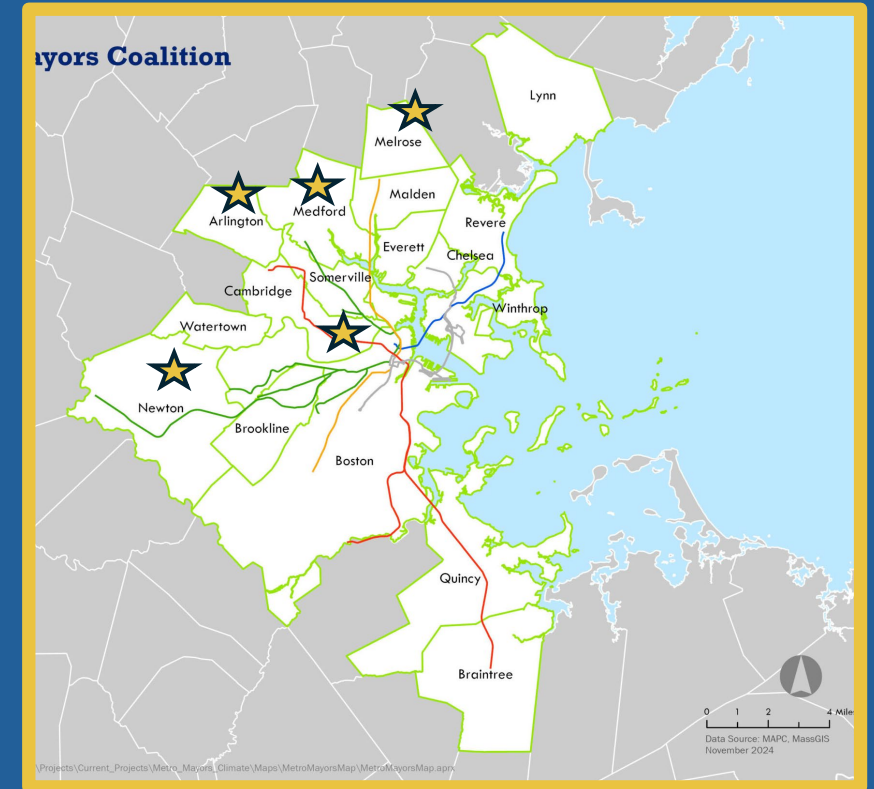
Boston, Cambridge, Somerville,
Winthrop, Chelsea



Heat Pump Coaches



Arlington, Cambridge, Medford,
Melrose, Newton



Leading by Example: Municipal Buildings

Melrose Public Library



Reconstructed to achieve decarbonization, energy conservation, LEED status

Newton Solar Installations



Solar installs at 19 City-owned buildings and parking lots, including a solar farm at Rumford landfill.

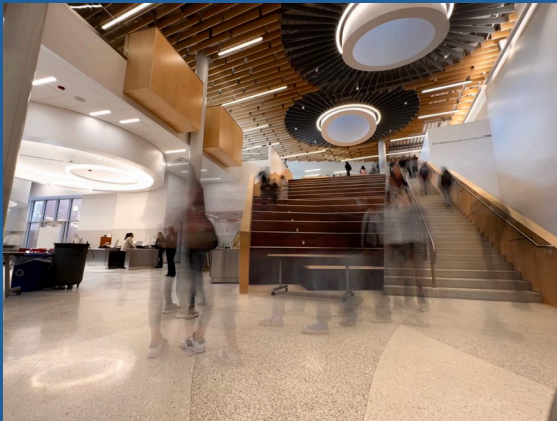
Boston Police Department



Completed solar PV canopy at Boston Police Department Headquarters

Leading by Example: Net Zero Schools

Arlington



All-Electric Retrofit at Arlington High School

Cambridge



King Open/Cambridge Street Upper Schools and Community Complex

Watertown



Fully Net-Zero High School (Top); Solar Canopies at Hosmer Elementary (Bottom)

Leading by Example: Electric Vehicles

Electric Refuse Trucks



Cambridge, Brookline, Medford, Boston

Electric School Buses



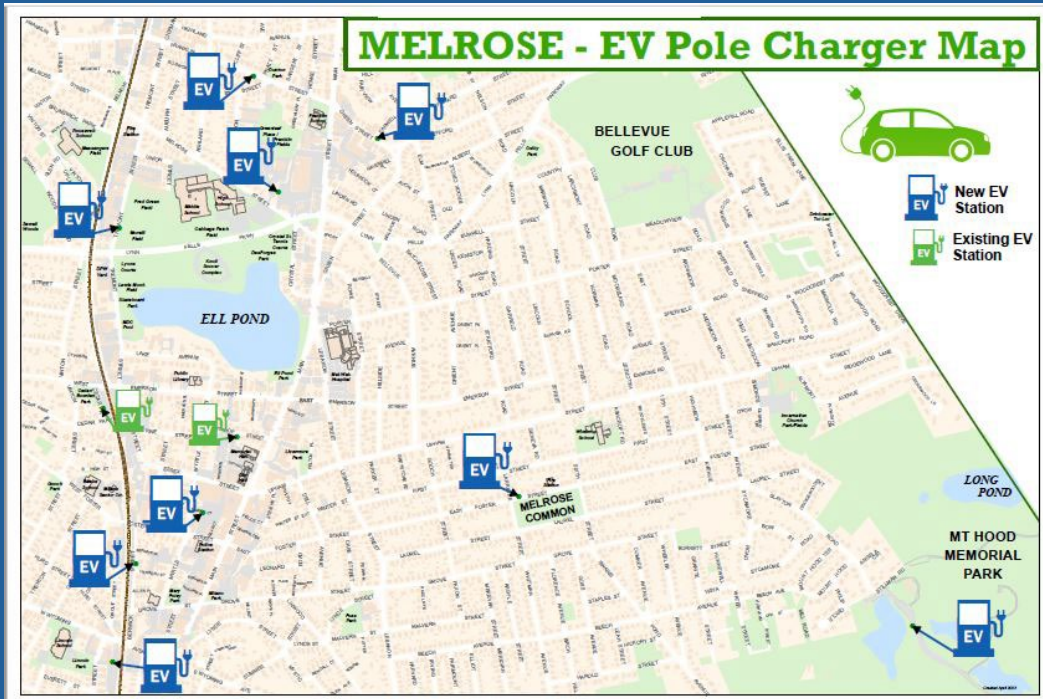
Quincy, Arlington, Boston

Electric Street Sweeper

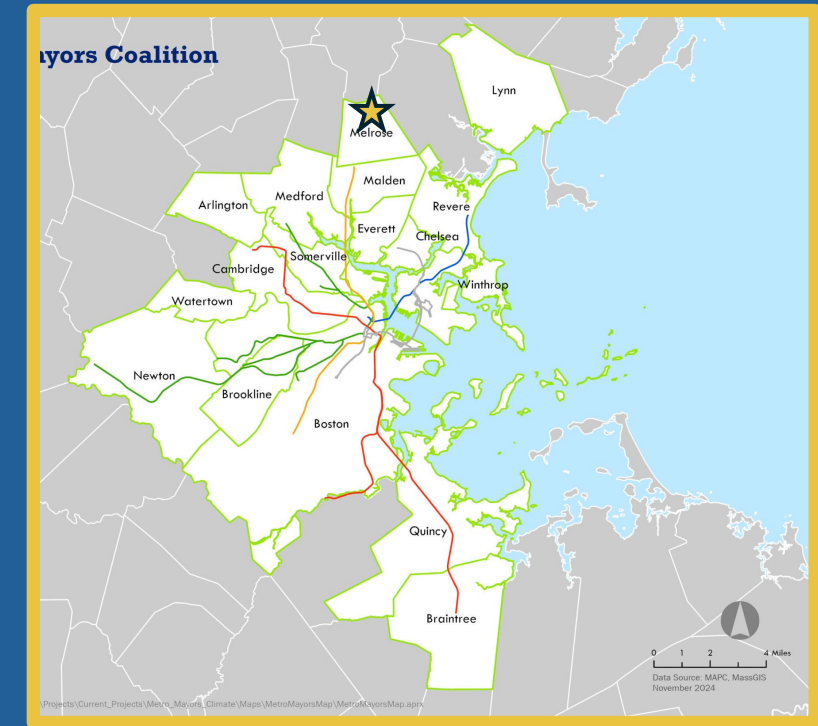


Medford

Melrose: Pole-Mounted EV Chargers



Melrose



Goal: Increase charging access to the public for those who cannot charge at home and those who want to avoid the cost of installation by partnering with National Grid to install 15 pole-mounted EV charging stations.

Active Transportation: Bluebikes



Arlington, Boston, Brookline, Cambridge, Chelsea, Everett, Malden, Medford, Newton, Revere, Somerville, Watertown

