

Welcome to the Blue Hills Parkway Meeting!



Thank you for joining us!

Please take this time to walk around the room, look at our project boards, and talk to the project staff

We will start the presentation at 6:00pm

Tonight's Agenda:

Open House: 5:30pm to 6:00pm

Presentation: 6:00pm to 6:30pm

Workshop and Feedback: 6:30pm to 7:30pm

Boston to Blue Hills

**Bike, Walk, and
Roll Connections**



A project led by
the Metropolitan Area Planning Council
and the Neponset River Watershed Association



Agenda

- Meet the project team
- Project background
- Community engagement
- Survey results
- Data collection
- Roadway designs
- Next Steps



Meet the Project Team

Project Leads:

Metropolitan Area Planning Council
Neponset River Watershed Association

Engineering Consultant:

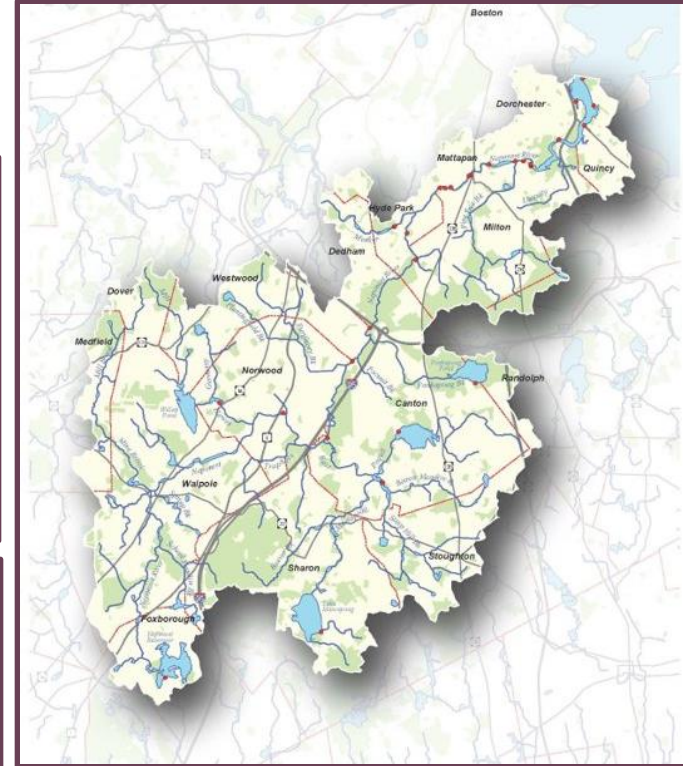
Nitsch Engineering

Local and State Partners:

Town of Milton and the Department
of Conservation and Recreation



The Neponset River Watershed Association (NepRWA) is a non-profit conservation organization working to clean and protect the Neponset River, its tributaries, and surrounding watershed lands.

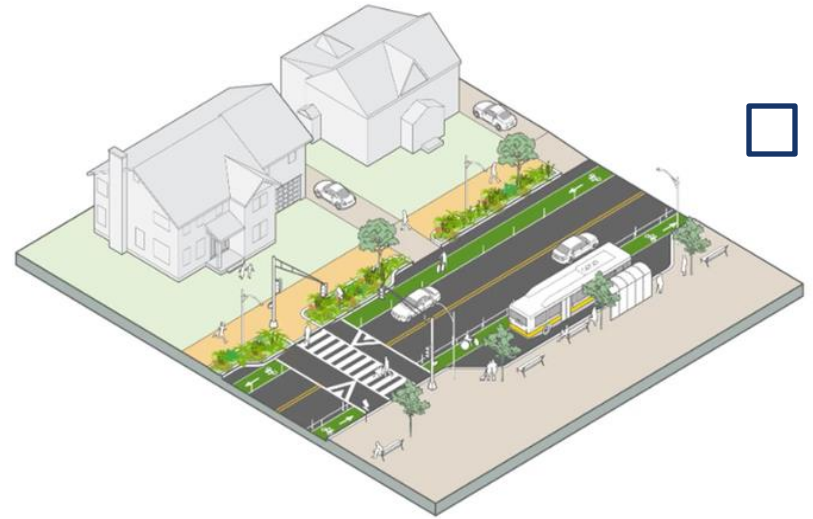


The Neponset Watershed spans over 14 towns and cities, and there are roughly 330,000 people who live in its boundaries.

Nitsch Engineering



- Transportation planning and design for this project
- Incorporated in 1989
- Civil, Structural, and Transportation Engineering; Land Surveying, Green Infrastructure, Planning, and GIS
- Offices in Boston, Worcester, and Lawrence, MA; Richmond, VA; and Washington, DC



Complete Street

What is Boston to Blue Hills?

- MAPC & NepRWA are working with local organizations to create a walking, biking, and rolling route from the Neponset River Greenway to the Blue Hills Reservation
- Possibilities considered:
 - On-street route
 - Off-street route
 - Combination of both

**Note: By "rolling" we refer to other types of personal wheeled mobility besides bicycling, such as wheelchairs, walkers, scooters, mopeds, skateboards, and more.*



Equity, accessibility, safety, enjoyability, sustainability, and ease of use are values in this work

Multiple Plans Have Identified This Need

- MAPC's LandLine
- Town of Milton's Bike and Pedestrian Plan
- DCR Parkways Master Plan
- Livable Streets' Emerald Network
- Go Boston 2030
- Quincy's Bicycle and Pedestrian Plan



BOSTON <> BLUE HILLS

Proposed Network

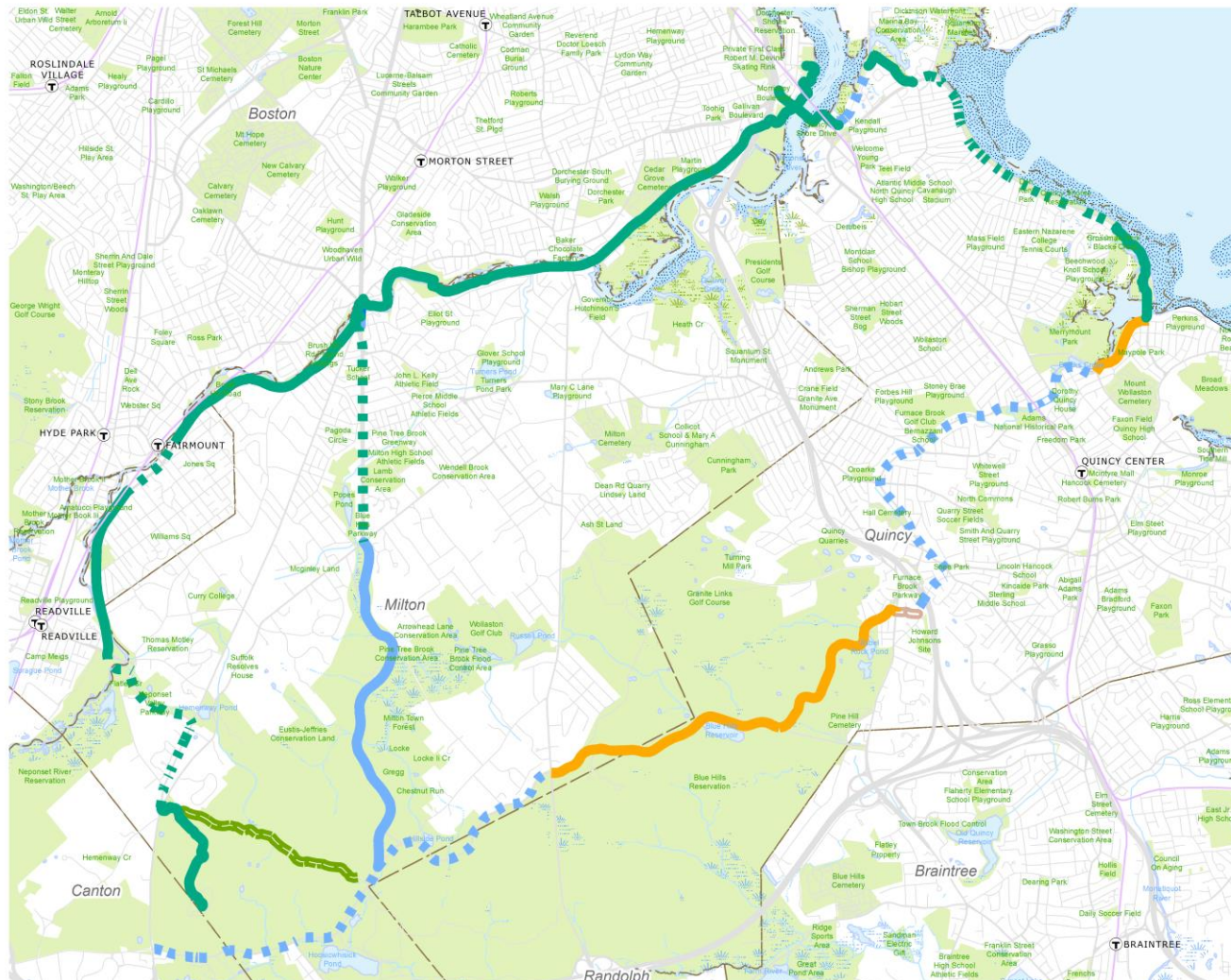
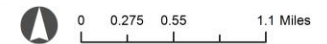
-  Complete
-  Envisioned
-  Shared Use Path
-  Shared Use Path - Unimproved Surface
-  Protected Bike Lane and Sidewalk
-  Bike Lane and Sidewalk
-  Shared Street
-  Gap - To be Evaluated

The information depicted on this map is for planning purposes only. It is not adequate for legal boundary definition, regulatory interpretation, or parcel-level analyses.

Produced by:
Metropolitan Area Planning Council
60 Temple Place, Boston, MA 02111
(617) 933-0700

Data Sources: MAPC, MassGIS, MassDOT,
Town of Littleton

July 2023



BOSTON <> BLUE HILLS

Proposed Network

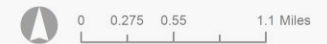
- Complete
- Envisioned
- Shared Use Path
- Shared Use Path - Unimproved Surface
- Protected Bike Lane and Sidewalk
- Bike Lane and Sidewalk
- Shared Street
- Gap - To be Evaluated

The information depicted on this map is for planning purposes only. It is not adequate for legal boundary definition, regulatory interpretation, or parcel-level analyses.

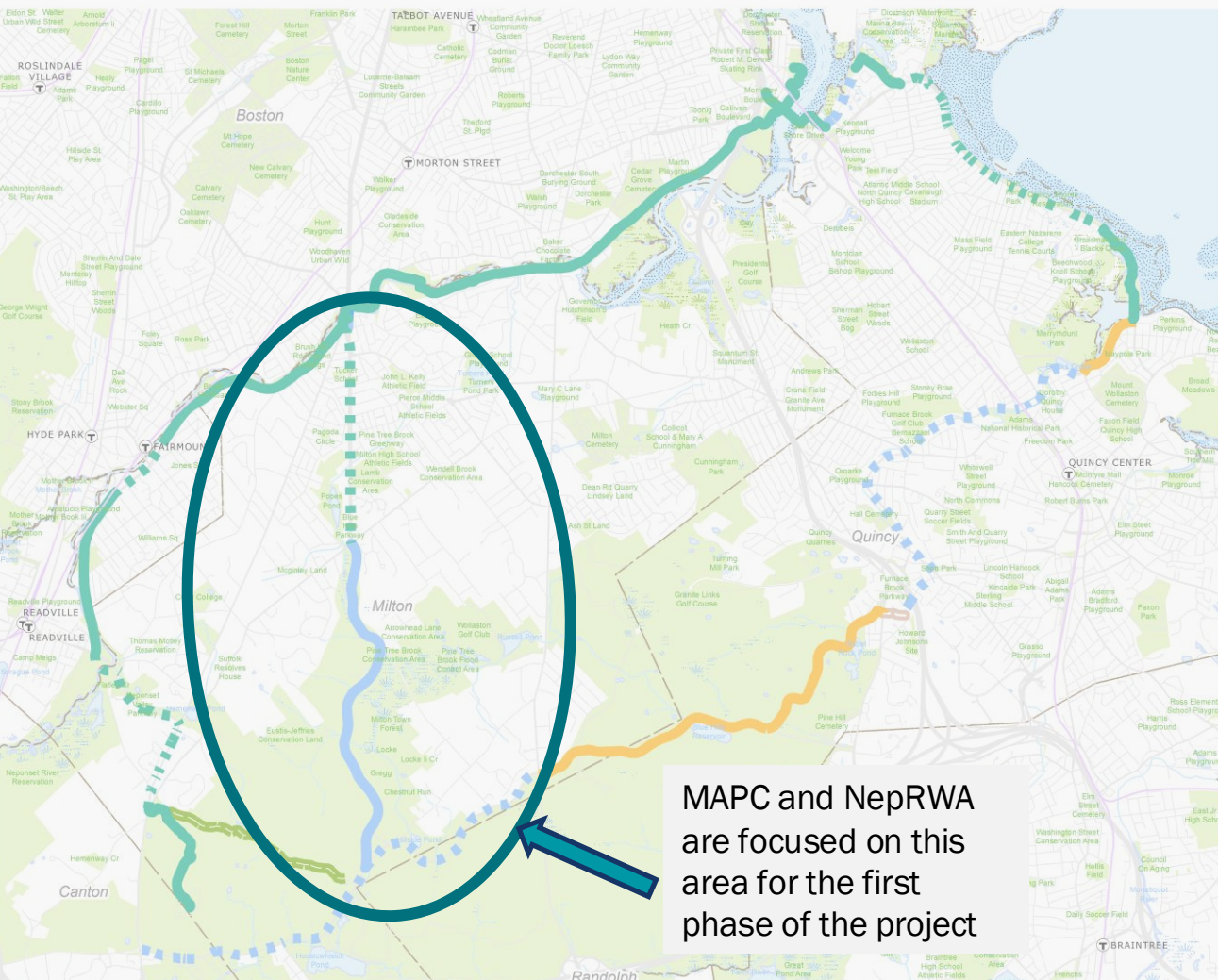
Produced by:
Metropolitan Area Planning Council
60 Temple Place, Boston, MA 02111
(617) 933-0700

Data Sources: MAPC, MassGIS, MassDOT,
Town of Littleton

July 2023



MAPC and NepRWA are focused on this area for the first phase of the project



BOSTON <> BLUE HILLS

Proposed Network

- Complete
- Envisioned
- Shared Use Path
- Shared Use Path - Unimproved Surface
- Protected Bike Lane and Sidewalk
- Bike Lane and Sidewalk
- Shared Street
- Gap - To be Evaluated

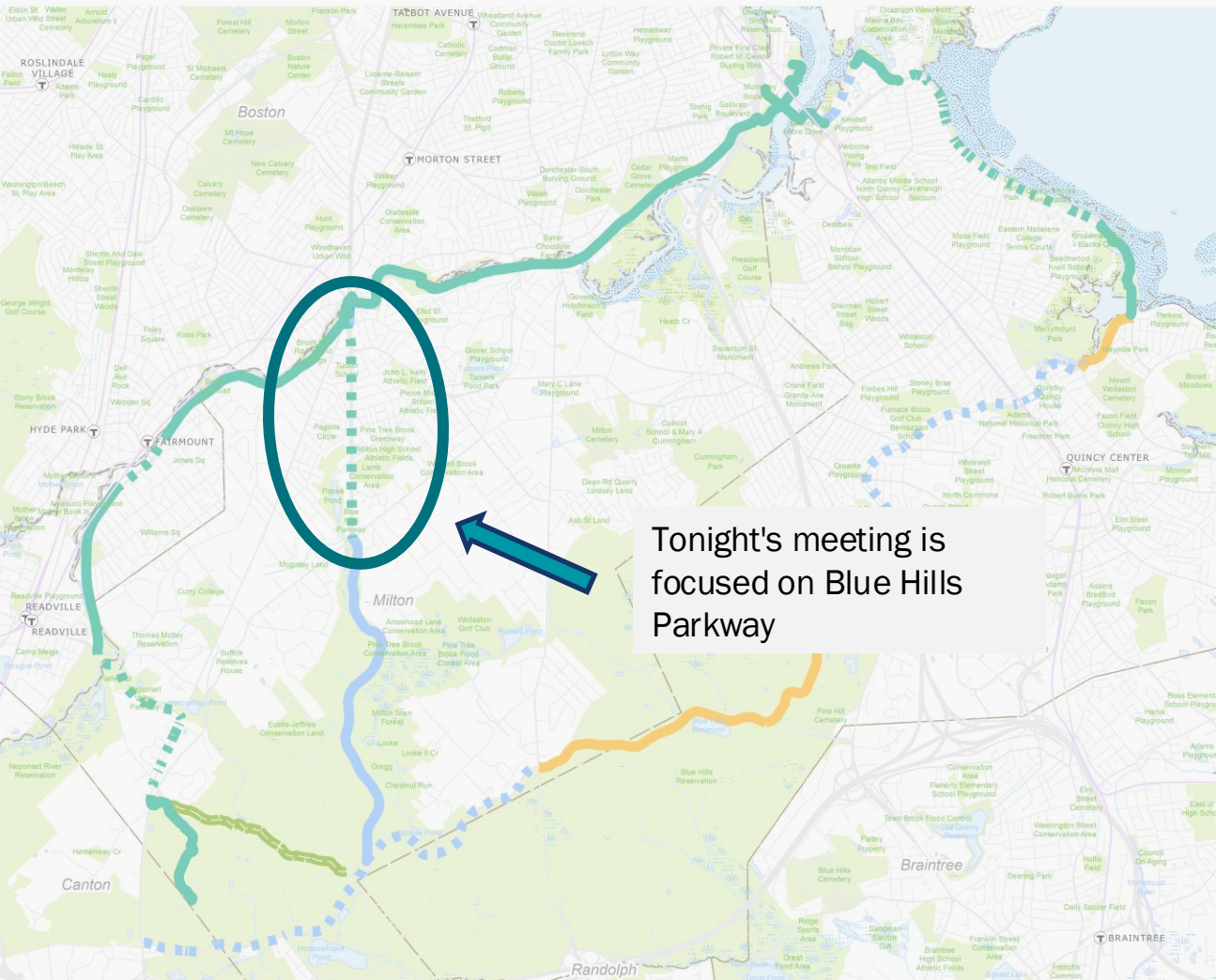
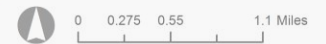
Tonight's meeting is focused on Blue Hills Parkway

The information depicted on this map is for planning purposes only. It is not adequate for legal boundary definition, regulatory interpretation, or parcel-level analyses.

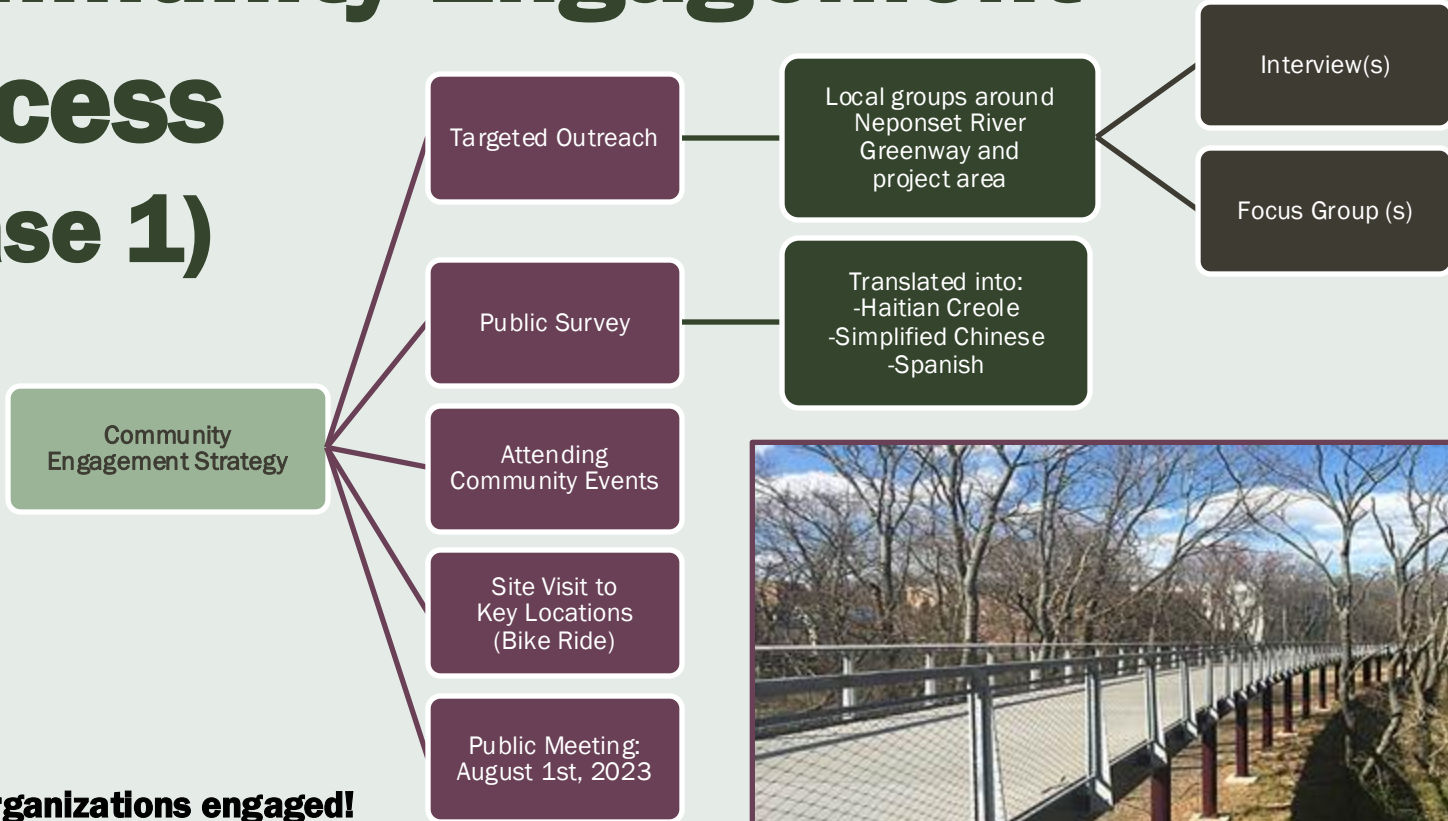
Produced by:
Metropolitan Area Planning Council
60 Temple Place, Boston, MA 02111
(617) 933-0700

Data Sources: MAPC, MassGIS, MassDOT,
Town of Littleton

July 2023



Community Engagement Process (Phase 1)



30+ local organizations engaged!



Youth Engagement

MHS! BOSTON TO BLUE HILLS PROJECT

CALLING ALL MHS STUDENTS...

1

ARE YOU INTERESTED?

Are you interested in learning about how walking and biking trails are created? Or about how you can make a difference in your community?



2

HAVE YOU HEARD OF THE BLUE HILLS RESERVATION?

Have you ever been to Blue Hills Reservation? Maybe you have not been, but want to go? Maybe you want to go but the route to get there is too difficult?



3

COME JOIN US!

Share more of your experiences, ideas and perspectives during the week of May 20th! Food and snacks will be provided!



4

PLEASE CONTACT US IF YOU ARE INTERESTED! SEE YOU SOON!

ATOM@MILTONPS.ORG
JASMINE.BETHEA.2024@MILTONPS.ORG



For additional information on the project, contact ripley@neponset.org or scan the QR code:



Milton Youth Engagement

MATTAPAN FOOD & FITNESS

JOIN US!

Share more of your experiences, ideas, and perspectives!

Have you ever been to the **Blue Hills Reservation**? Maybe you have not been but want to go? Maybe you want to go but the **route** to get there is too difficult?

Are you interested in learning about how **walking and biking trails** are created? Or about how you can create something that will make a **difference** in your **community**?

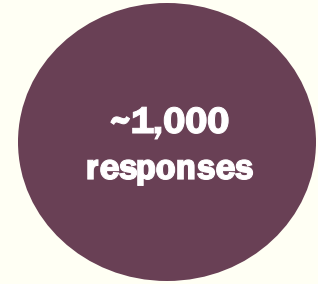
PLEASE CONTACT SHAWNTELL IF YOU ARE INTERESTED!

NEPC OFFICE
1615 BLUE HILL AVE.
MATTAPAN, MA
02126, SUITE 307

FOOD AND INCENTIVES WILL BE PROVIDED!

Mattapan Youth Engagement

Survey Results



Thank you to our partners who helped us distribute the survey!

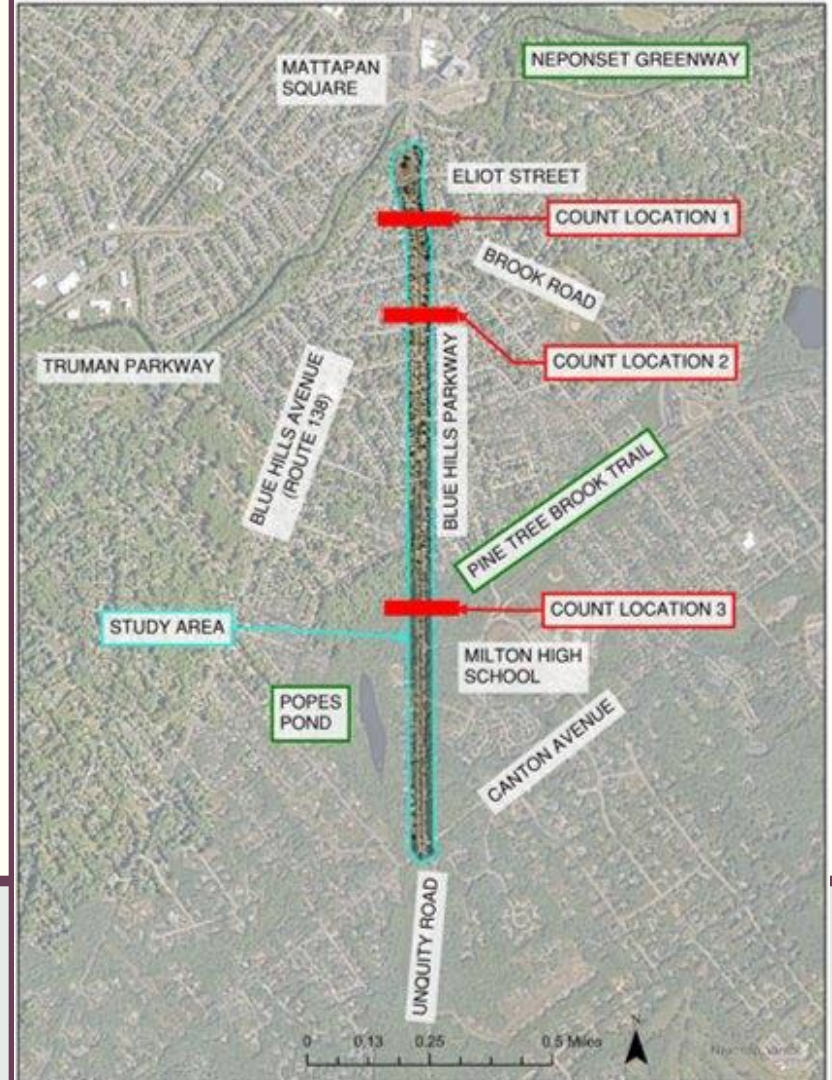
The survey was available in English, Spanish, Haitian Creole, and Simplified Chinese.

Key Findings:

- 90% of survey respondents would like to have more ways to get to the Blue Hills
- Of those survey respondents who had been to the Blue Hills before, 91% of them drove there
- Of those survey respondents who had NOT been to the Blue Hills before, 70% of them said their biggest barrier was that they didn't have any way of getting there
- 67% of survey respondents said biking to the Blue Hills feels unsafe

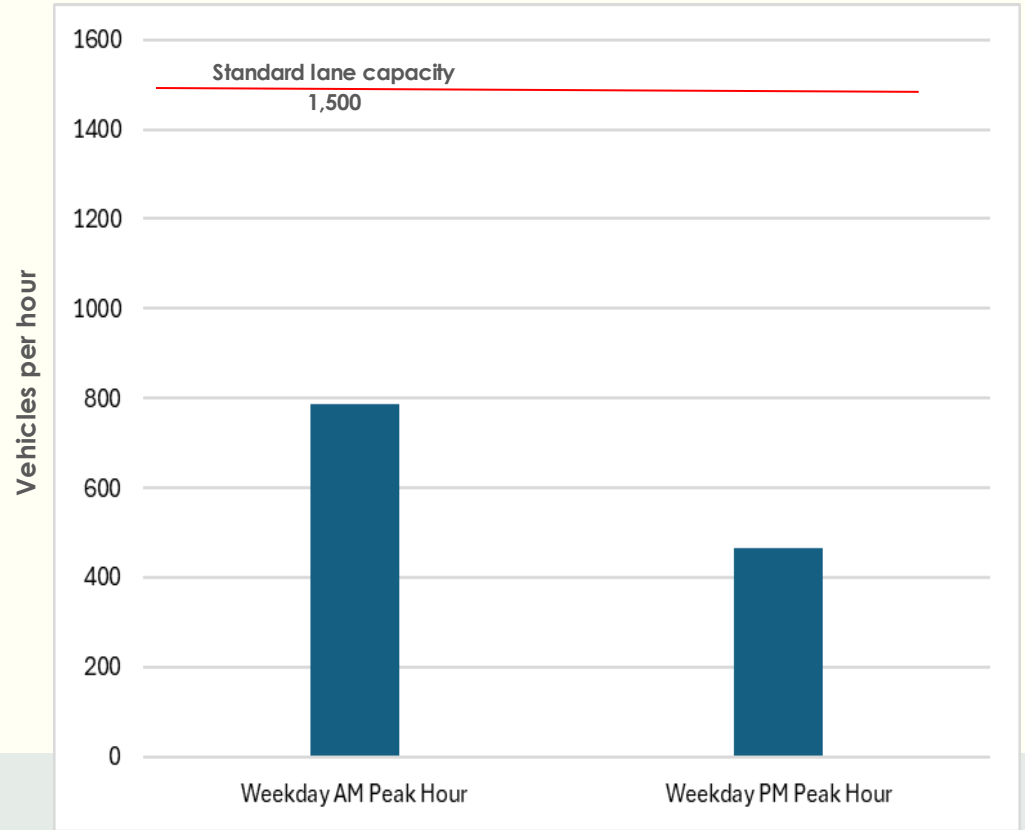
Data Collection

- Goal: **How many users** are we planning for?
 - and **how fast** are they going?
- Counted vehicle, bicycle, and pedestrian traffic at 3 points along Blue Hills Parkway
- Collected on weekdays (Wednesday – Thursday) and weekends
- Data collected in spring 2024



Data Collection Results: Traffic

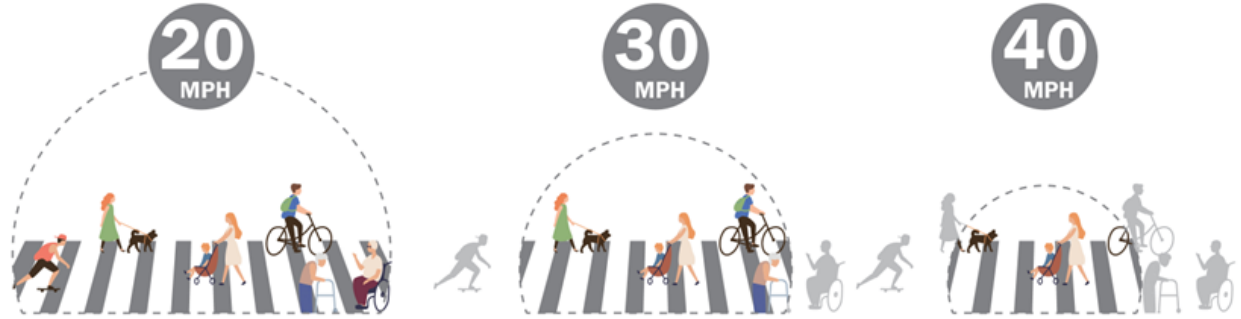
Peak hour traffic is well below lane capacity, justifying reducing north-bound lanes.



Traffic Counts of Blue Hills Parkway,
from Brook Road to Canton Ave

Roadway Safety

Higher Speeds Reduces Driver's Field of Vision

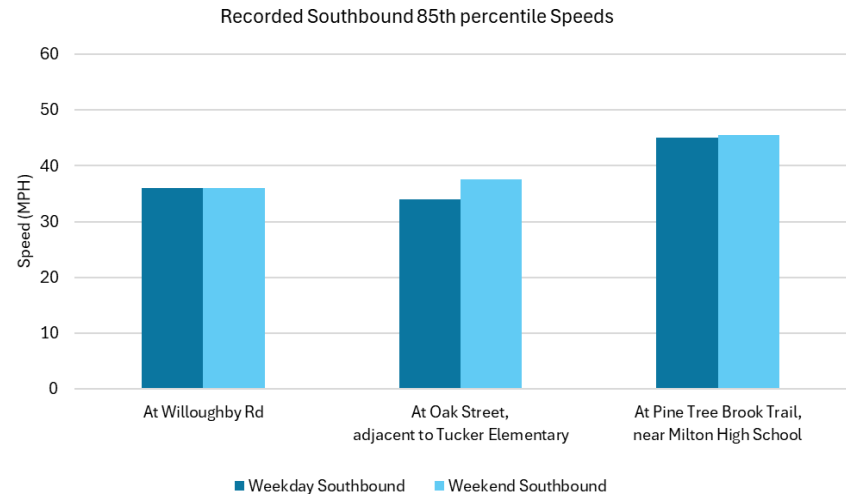
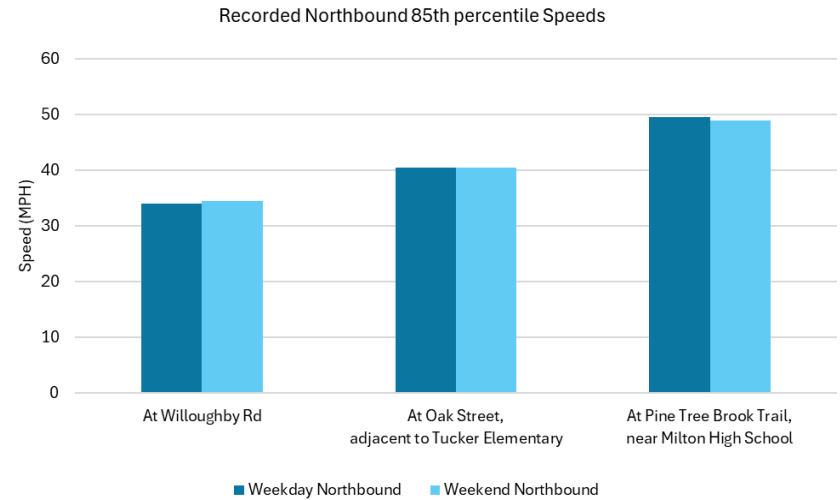


Higher Speeds Significantly Increase Likelihood of Fatality or Severe Injury



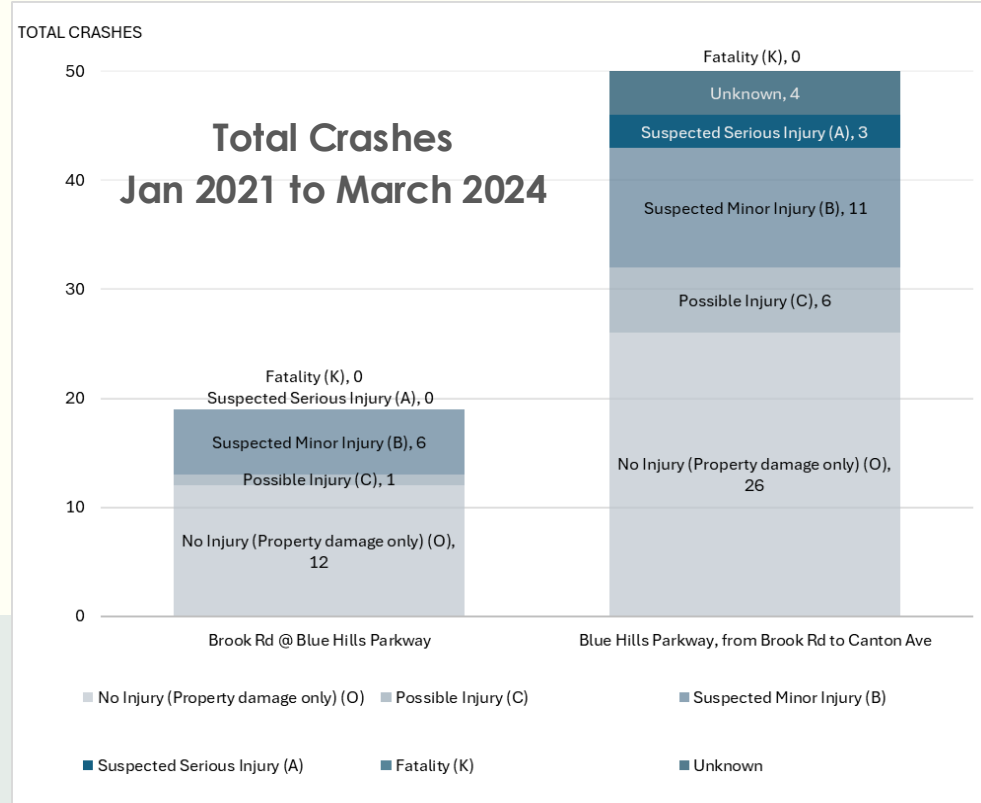
Data Collection Results: Safety

People are driving very fast, which significantly increases likelihood of fatality or serious injury.

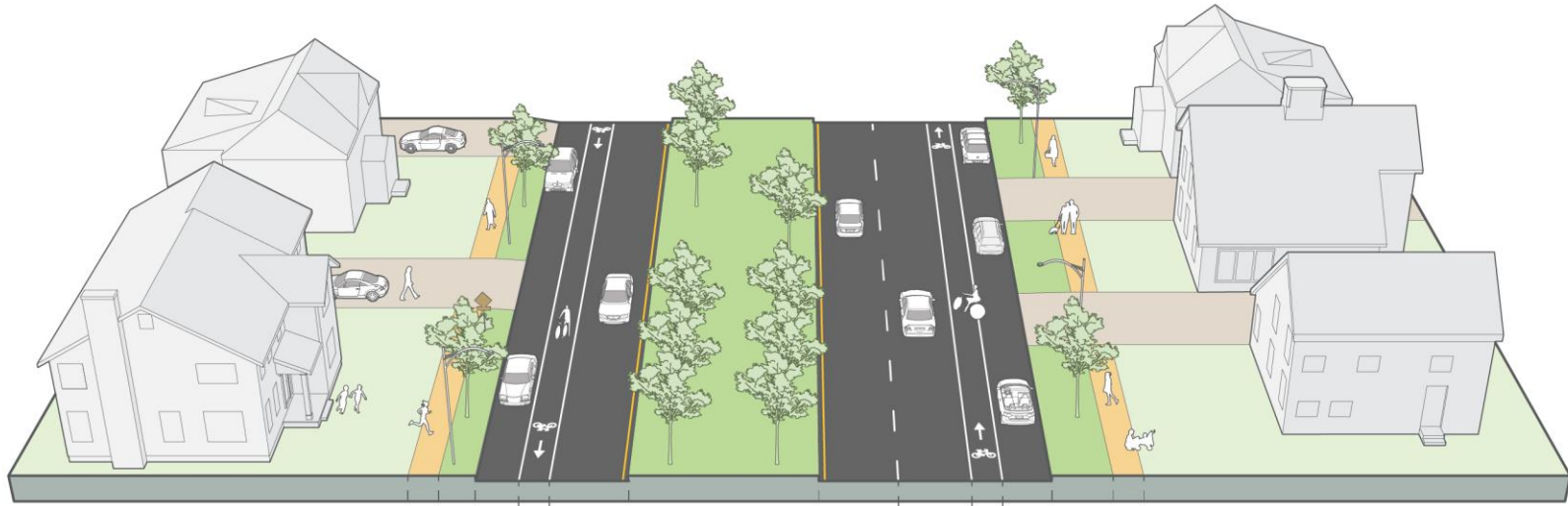


Data Collection Results: Safety

Numerous crashes in the area indicate a need for traffic calming.

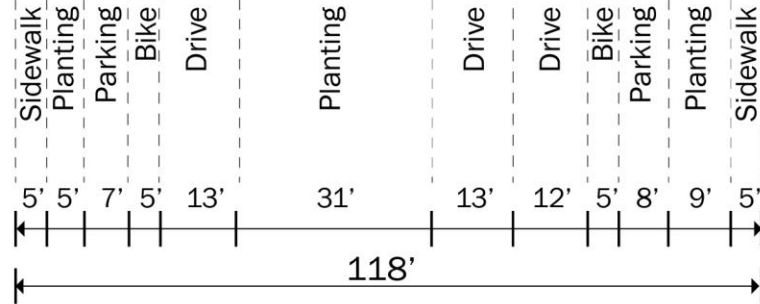


Blue Hills Parkway - Existing Condition



Challenges we've heard:

- Speeding
- Safety concerns
- Lack of a sense of place

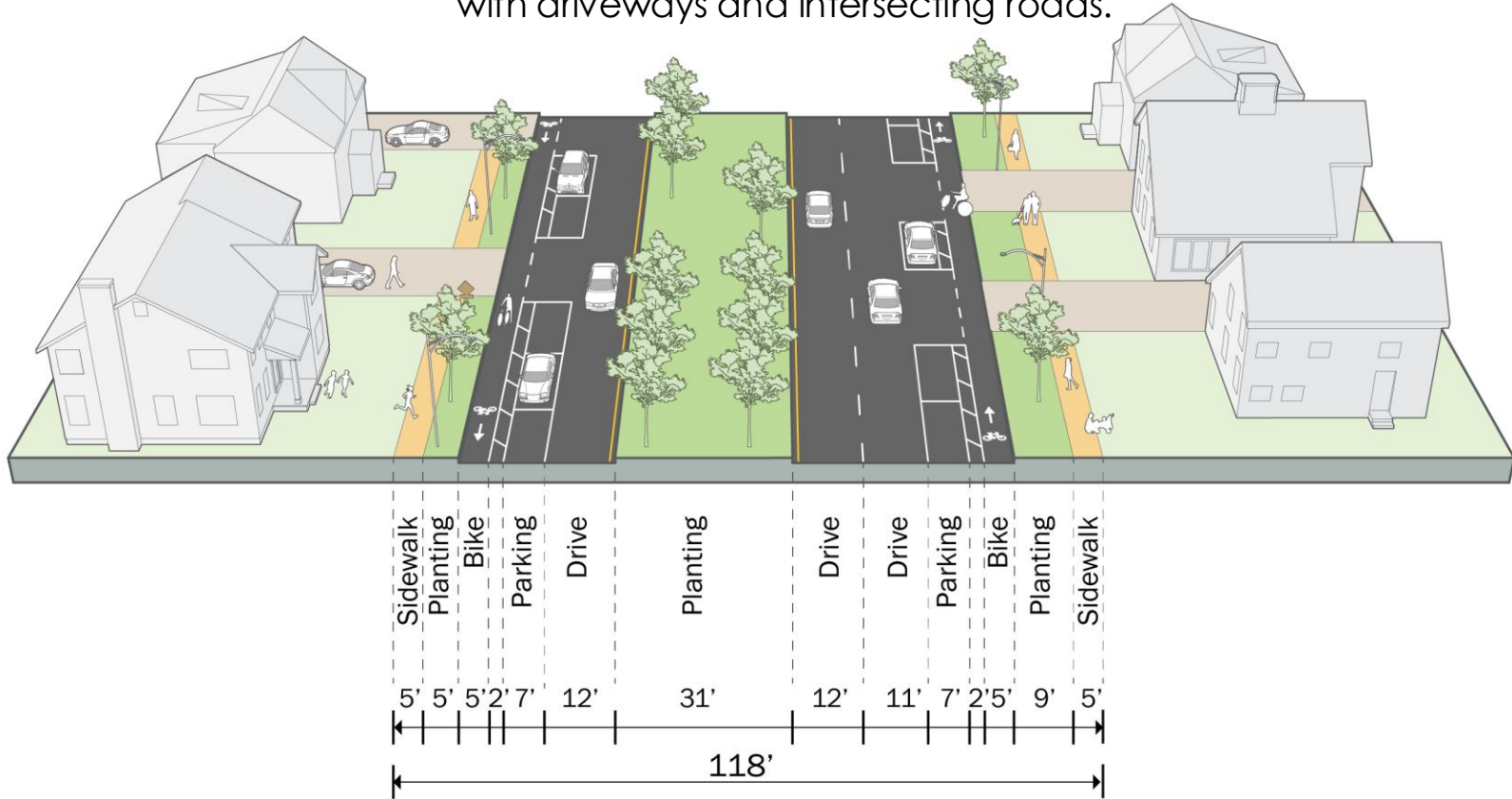


Ideas we've heard:

- Activate the center median
- Increase safety, especially for families with children
- Add crosswalks, benches, and signage

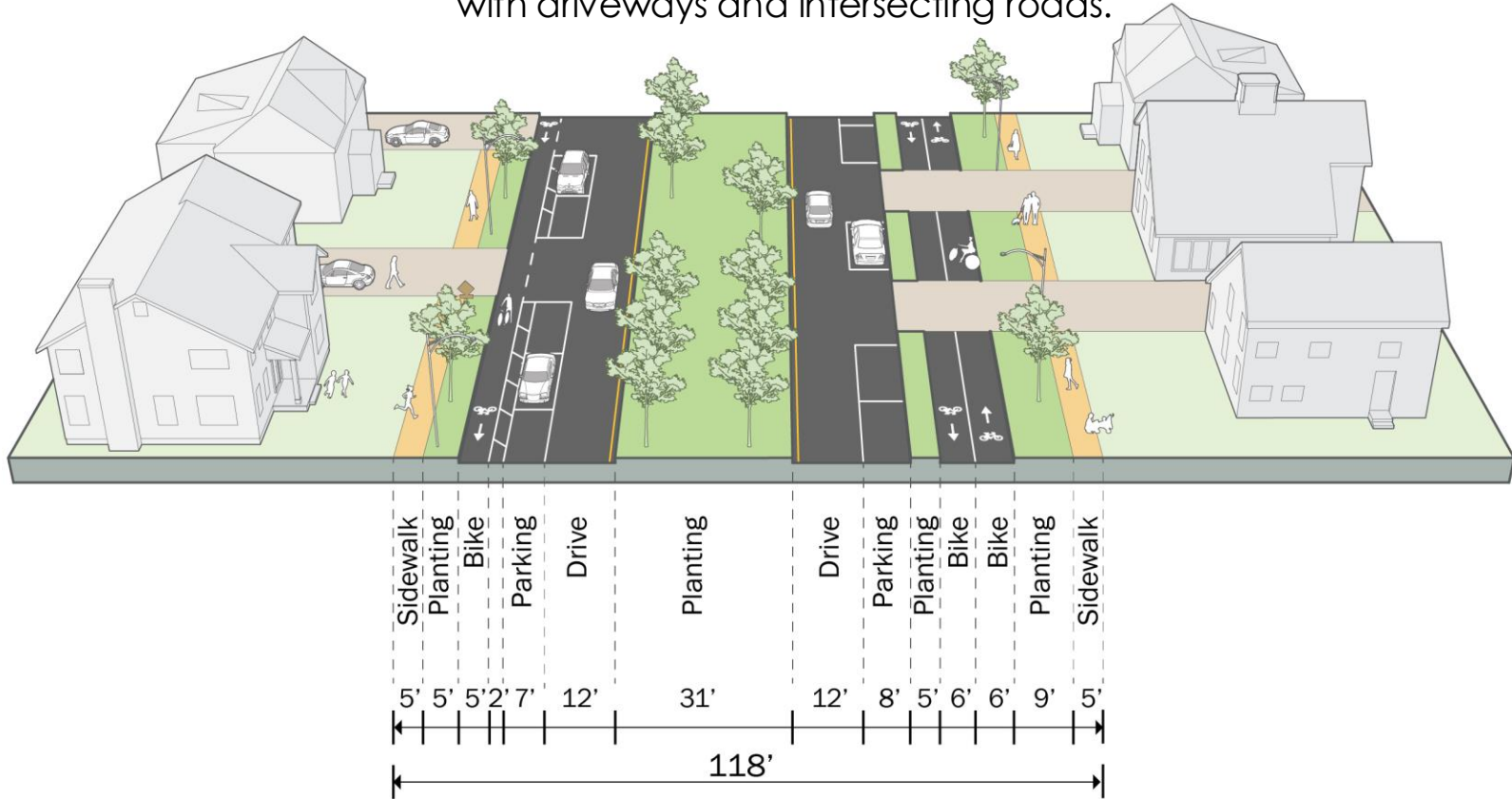
Blue Hills Parkway - Alternative 1

Bike paths on the outside of the streets will have **110 conflict points** with driveways and intersecting roads.



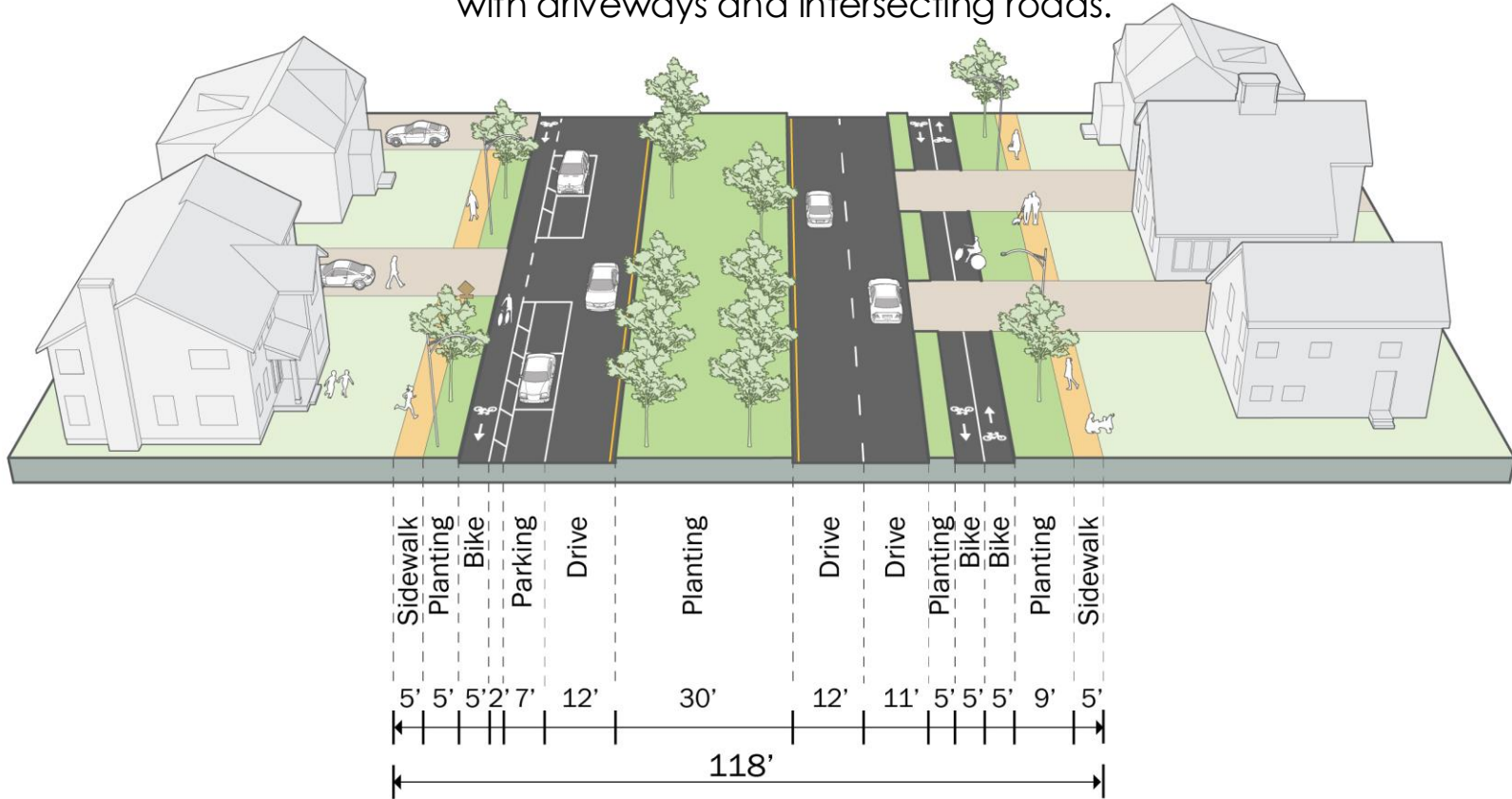
Blue Hills Parkway - Alternative 2

Bike paths on the outside of the streets will have **110 conflict points** with driveways and intersecting roads.



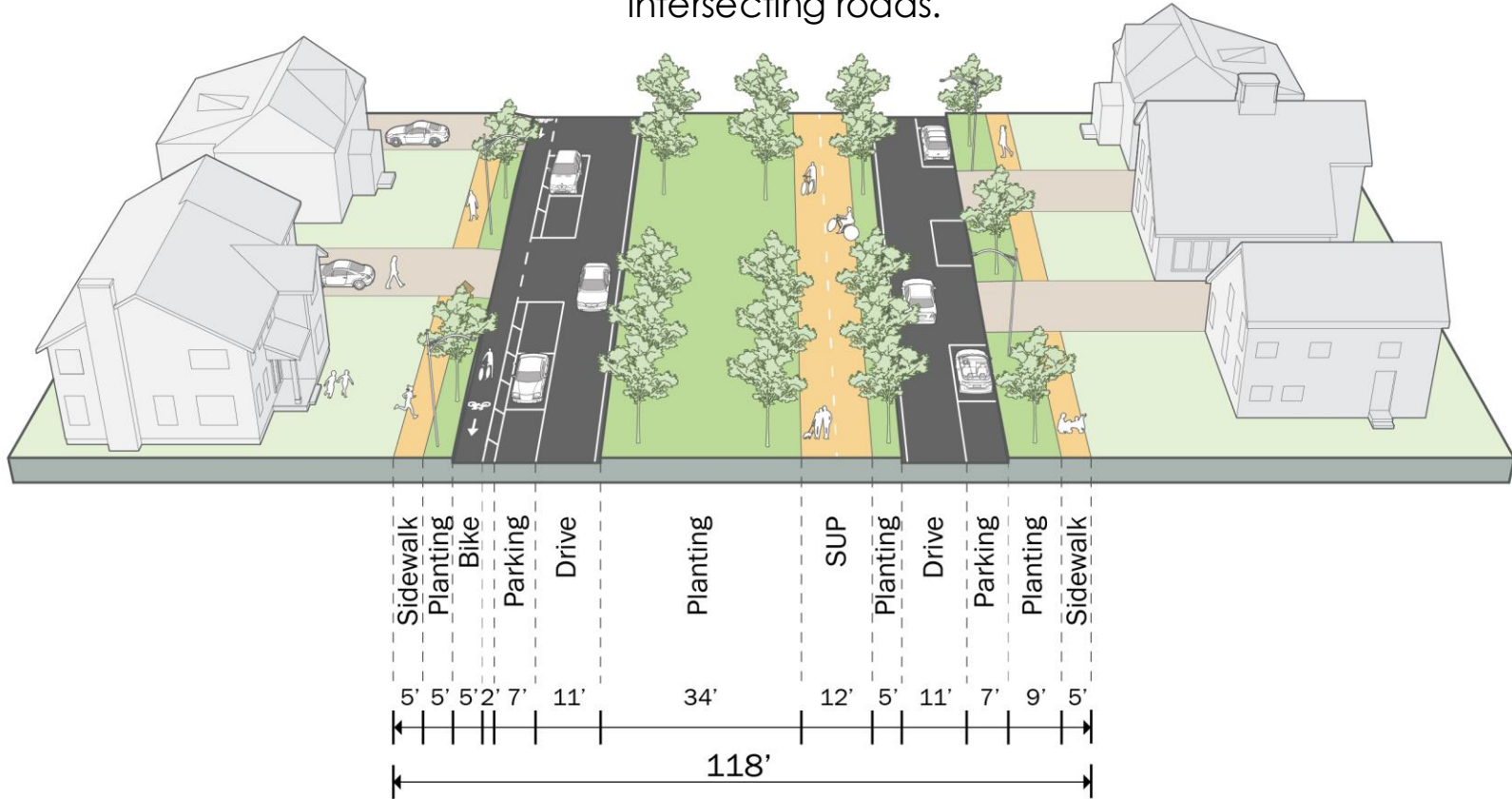
Blue Hills Parkway - Alternative 3

Bike paths on the outside of the streets will have **110 conflict points** with driveways and intersecting roads.



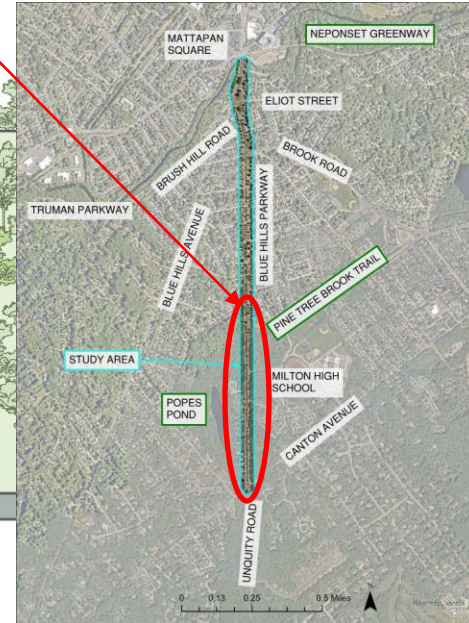
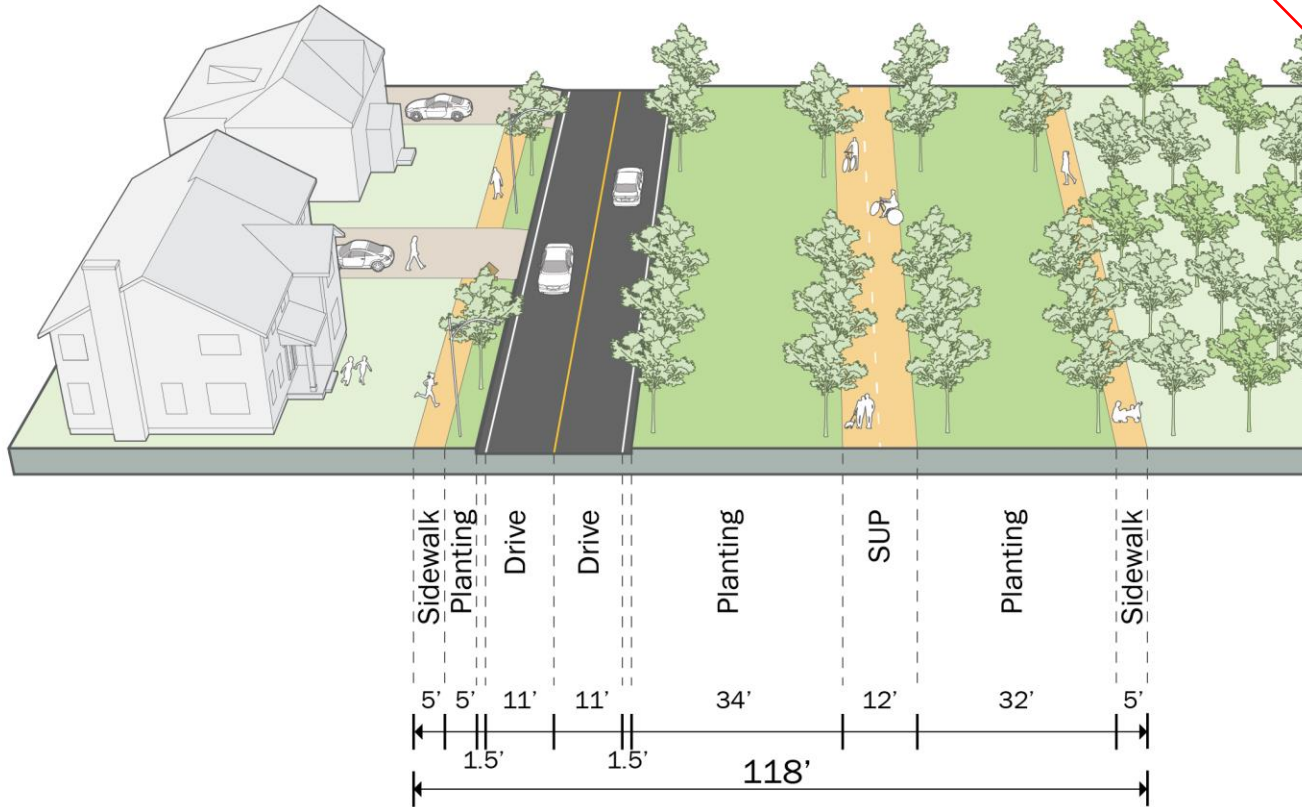
Blue Hills Parkway - Alternative 4

A center-running shared-use path will have **11 conflict points** with intersecting roads.



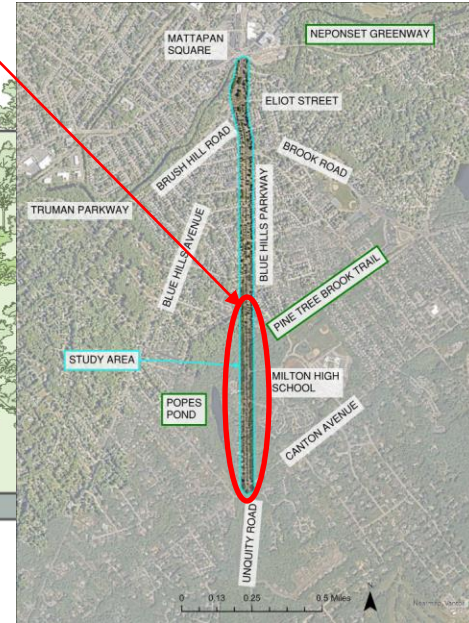
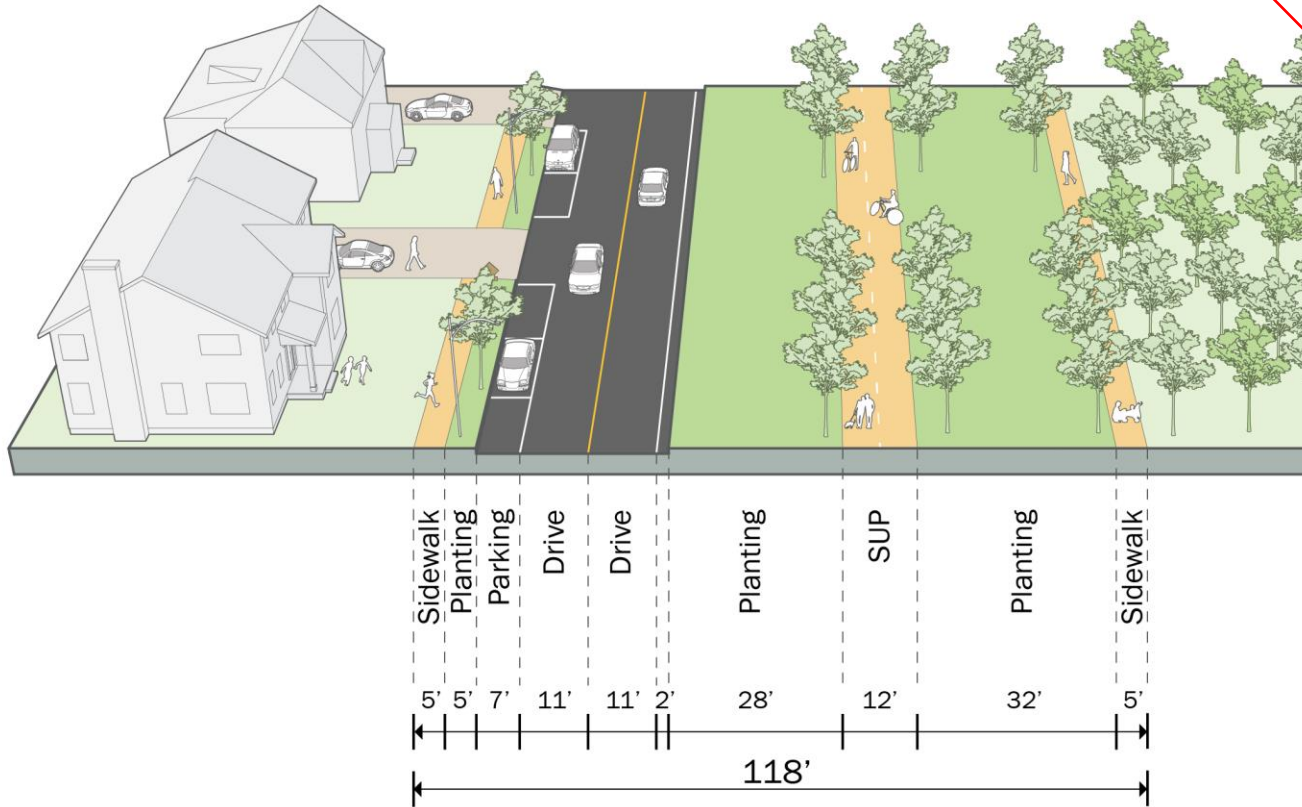
Blue Hills Parkway - Alternative 5 - South of Pine Tree Brook

Alternatives 5 and 6 would only be implemented south of the Pine Tree Brook Trail



Blue Hills Parkway - Alternative 6 - South of Pine Tree Brook

Alternatives 5 and 6 would only be implemented south of the Pine Tree Brook Trail



Next Steps

Host public **meeting** about the project and receive feedback

January 2026

Finalize **feasibility study** and preferred design, share with DCR for further design work

March 2026

February 2026

Incorporate public feedback, select preferred design alternative

Spring 2026

Discuss the **next phase** of the project

For more information about the project, visit our website: <https://www.mapc.org/resource-library/boston-2-blue-hills/>

Workshop & Feedback

Questions? Ideas? Feedback?

From 6:30pm-7:30pm you can move around the room, ask questions of the project team, and give your feedback.

You can provide feedback in the following ways:

- Share your verbal feedback to any member of the project team
- Write a sticky note with feedback about a specific design
- Use dots to show your preference for a specific design
- Write anonymous feedback on a card at the sign-in table

Tonight's meeting will end promptly at 7:30pm to ensure time for clean-up and break down.

Please make sure you've signed in at the sign-in table near the entrance!