



Welcome!

Accelerating Climate Resilience Speaker Series

From Awareness to Action: Climate Engagement and Storytelling



Rozina Kanchwala

**Executive Director, Eco.Logic
Regenerative Storytelling Lead, Climate Land Leaders**



David Sittenfeld, PhD

**Center for the Environment Director
Museum of Science – Boston**



Nubes Chen

**Arts, Culture, and Humanities Planner II
Metropolitan Area Planning Council**

Zoom Logistics

- Please enter questions in the chat box
- To use the chat, click on the “chat” icon at the bottom of your screen, type in your question, and hit enter.
- Remain on mute

We reserve the right to expel anyone at any point should they disrupt the meeting for any reason. Similarly, we may need to end the meeting early and will follow-up with participants.

Accelerating Climate Resilience Speaker Series

Conversations with experts and practitioners from across the country who can speak to the ways they are perceiving and advancing resilience.

Past events include conversations about the effects of sea level rise on municipal budgets, climate resilience and racial justice, building social resilience through art, and empowering youth movements on climate.





Rozina Kanchwala

Executive Director, Eco.Logic
Regenerative Storytelling Lead, Climate Land Leaders



David Sittenfeld, PhD

Center for the Environment Director
Museum of Science – Boston



Nubes Chen (Moderator)

Arts, Culture, and Humanities Planner II
Metropolitan Area Planning Council

About Arts & Culture Department

Since 2017, MAPC's Arts and Culture department has been supporting

cultural planning, public art, and policy-making

across the region to ensure that arts and culture can thrive.



How do we understand climate engagement?

Climate engagement is active involvement of communities and institutions in co-learning, discussing, and acting on climate-related challenges and opportunities. This practice acknowledges that **residents are co-knowledge holders and change agents of climate change** and aims to build shared understanding, connection, and agency around climate futures.



Understanding that climate impacts are layered onto histories of disinvestment, exclusion, and environmental injustice, we approach the work through an **equity lens** to explore the cultural, social, and historical dimensions of climate change.

Why do we bring in Storytelling?

Enrich the meanings
of climate change



Elevate voices of
community



Expand climate
narratives beyond
vulnerability to
collective resilience



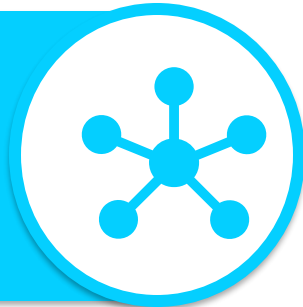
What do we do?



- Work with artists in developing creative engagement methods and tools to support municipalities and community-based organizations



- Increase equitable access to spaces for local knowledge exchange



- Build a regional network of climate resilience practitioners and creatives





Tropical Resilience Lounge



Heat Oral History Kit



Arts-based and nature-based programming to
build connections and inspire environmental action

Story of Climate-Migration

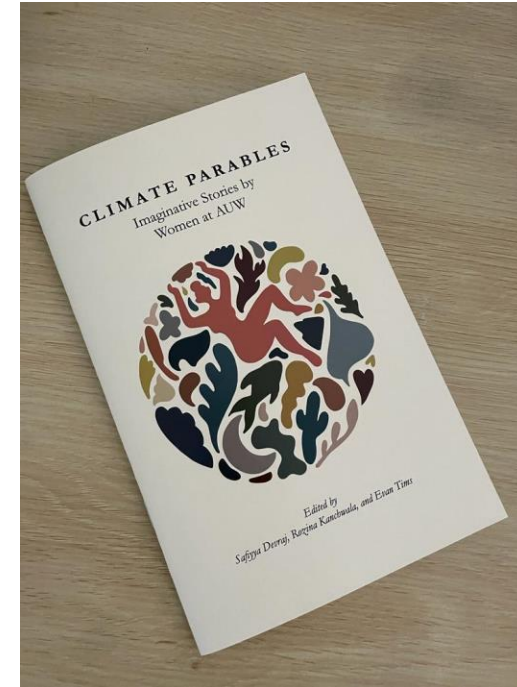
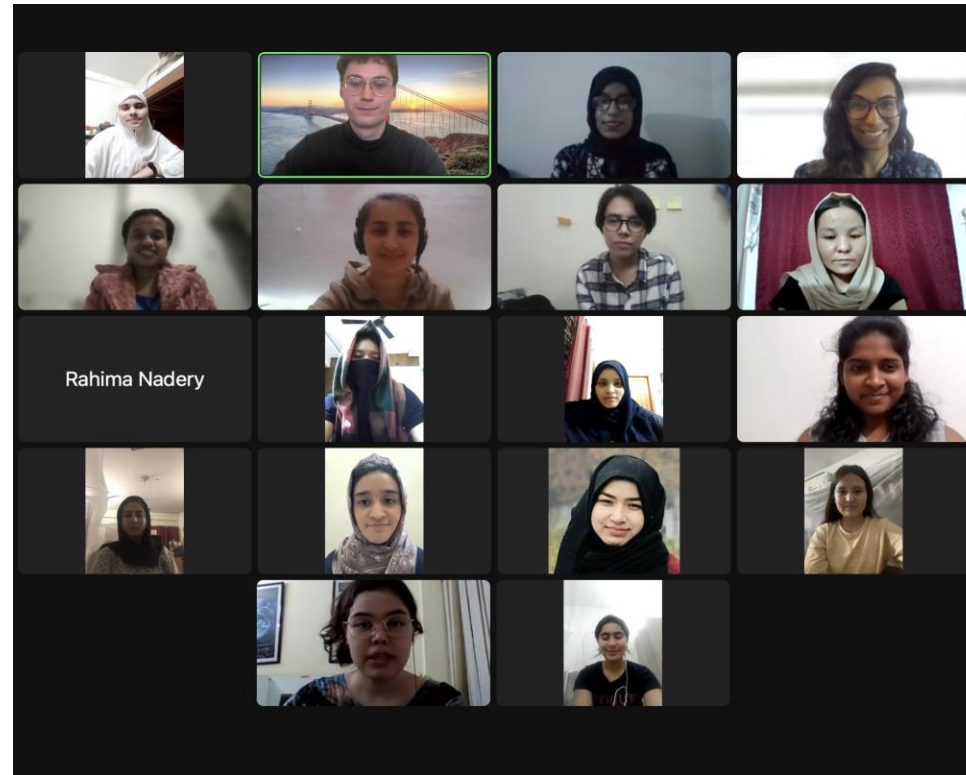
- The United Nations High Commissioner for Refugees (UNHCR) estimates that, on average, 21.5 million people were displaced annually due to weather-related events from 2008 to 2018.
- By 2050, there will be 1.2 billion people displaced globally due to climate change



Elevate Voices in Climate Storytelling



ThePhoto by PhotoAuthor is licensed under CCYSA.





Mission: To provide community and support for land stewards
creating climate resiliency



Betty Brennan, Potomac, IL



Paul Mairet, Lake City, MN



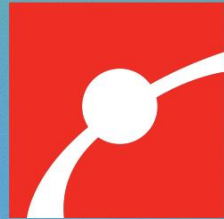
Leanna Goose, Leech Lake

Rural Regeneration Storytelling Program

This program celebrates the many forms storytelling takes. 2025 storytellers hosted people on their farms, taught classes, wrote poems, spent time with state and federal policymakers, were interviewed on radio shows and podcasts, published op-eds, and spoke at community events.



**"Art is not a mirror held up to reality, but a hammer with which to shape it."
- Bertolt Brecht**

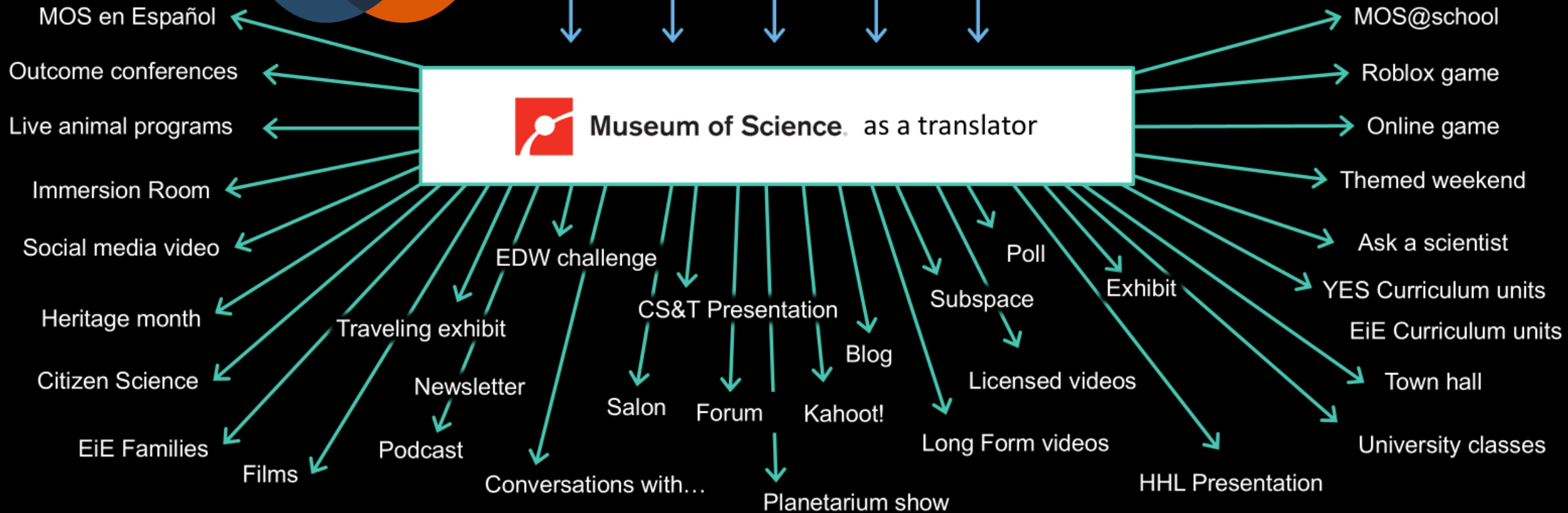


CENTER *for*
the ENVIRONMENT

David Sittenfeld (he/him/his)
Director, Center for the Environment
MAPC Accelerating Climate Resilience Webinar

February 26, 2026

Content from our Community's Intellectual Capital



I get to do this as my job!





Mushroom leather? Apple peel shoes? Exhibit showcases sustainable innovations

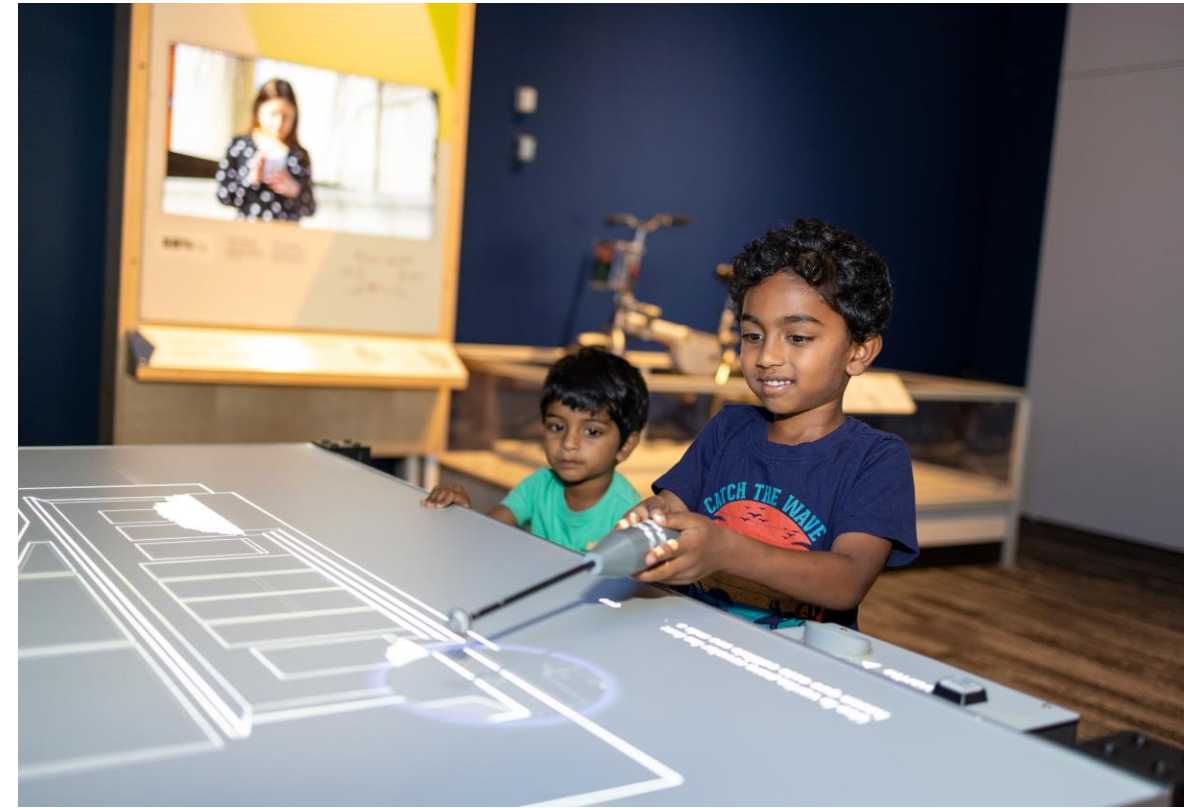
10:33

August 07, 2024 | By Amer

A year-long exhibit at the latest innovations in climate panels and fabric made

David Sittenfeld, director Marino, the museum's exhibit is an invitation to everything we use and b

This segment aired on Aug



Boston's Museum of Science opens new "Innovation: Earth" exhibit about changing climate

WBZ NEWS

By Jacob Wycoff
Updated on: July 17, 2024 / 7:27 PM EDT / CBS Boston



EXCLUSIVE VIEWING

THURSDAY, SEPTEMBER 12 • 6:30 P.M.

Blue Wing, Museum of Science

Component-specific findings: Immersive room

Visitors learned about making sustainable choices and the variety of innovations available. They reported engaging in ‘future thinking’ about our cities and sustainable living.

The audio-visual experience and availability of choices were particularly impactful.

- “It really showed the difference in your choices, I’m the one who’s making this city feel this way and making the future better”
- “Audio and visual together makes a seamless experience”
- “The big screens, you’re right in front of it and the circles on the ground, so you know -- you’re in it”





Emotions

What are your top three emotions after visiting this exhibit? (n=83)

| | | Negative | | Positive | | |
|--------|------|-------------------|-------------------|------------------|-----------------|--|
| | | | | | | |
| Energy | High | Angry 0% | Challenged 11% | Surprised 20% | Excited 49% | |
| | | Discouraged 2% | Confused 7% | Joyful 29% | Inspired 46% | |
| | Low | Pessimistic 0% | Uneasy 1% | Satisfied 42% | Hopeful 25% | |
| | | Sad 1% | Bored 0% | Serene 17% | Curious 61% | |
| | | Valence | | | | |

Source: Exit survey and exit interview

Curious, inspired, excited, and satisfied, were the top emotional responses elicited by Innovation: Earth.

Reasons included:

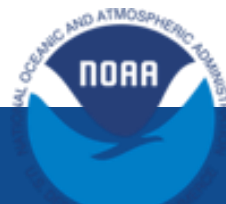
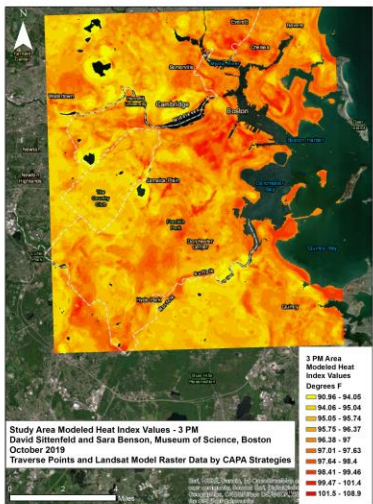
- Enjoying the exhibit in general
 - *"Seeing the plasma tubes felt like a shockwave down my spine"*
- Learning new information related to energy innovations, technology, sustainability, and climate change
 - *"Seeing and understanding the things that can be done, even on a personal level, made me look forward to seeing and partaking in them."*
 - *"Seeing new stuff being developed to solve modern problems on sustainability (ex. heating)"*
- The exhibition's design (e.g. look and feel, technology, hands-on)
 - *"There was calming music, there were many visuals throughout the exhibit, and the lighting was perfect to create the calm/serene atmosphere."*
- Seeing group members use the exhibits
 - *"My 2 children have ADHD and while they didn't understand the concept it was so nice for them to be able to jump around"*



Museum of Science®

CENTER *for* *the* ENVIRONMENT

In 2019 and 2021, the Museum of Science supported and organized two regional campaigns in 25 Greater Boston communities with support from NOAA's Climate Program Office.



Northeastern University
Marine Science Center





**CHANGE
CLIMATE
CHANGE**

Museum Experts on Urban Heat Islands



Joseph Barr @jobar73 · Aug 13

John and I did some citizen science first thing this morning, collecting heat and air quality data as part of the @MysticMyRWA/ @museumofscience #WickedHotMystic project. You can track your own heat data at iseechange.org #ExtremeHeat #ClimateCrisis



...

Dave (Name Not Declassified) @dnki · Aug 13

Good morning, Mr Sun. Keys do some more science! #wickedhotmystic

...



Julie

Our

...

...

...

...

...

ter

...

...

...

...

...

...

...

...

...

...

...

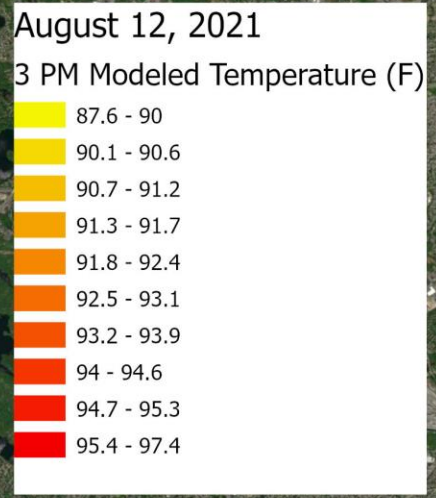
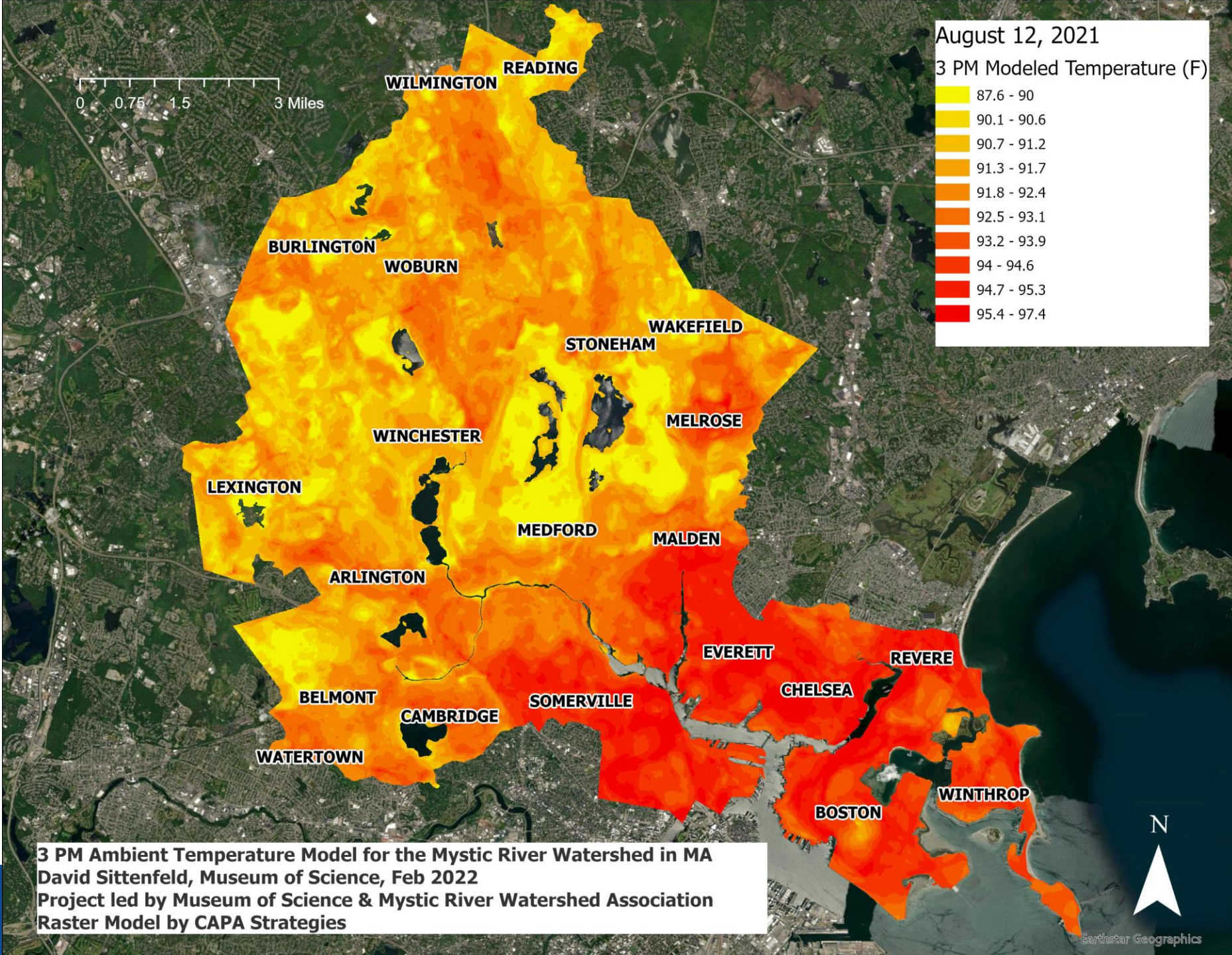
...

...

...

...

...



3 PM Ambient Temperature Model for the Mystic River Watershed in MA
 David Sittenfeld, Museum of Science, Feb 2022
 Project led by Museum of Science & Mystic River Watershed Association
 Raster Model by CAPA Strategies

Earthstar Geographics

▶ Feeling the heat in Greater Boston? Blame historic racist housing practices.



It was hot and humid on the first day of the school year at the Mary Curley K-8 school in Jamaica Plain, Sept. 8, 2016.

Boston Globe/Boston Globe via Getty Images

By **Hannah Reale**

SHARE   

GBH

**WICKED
HOT
MYSTIC**

Case Study

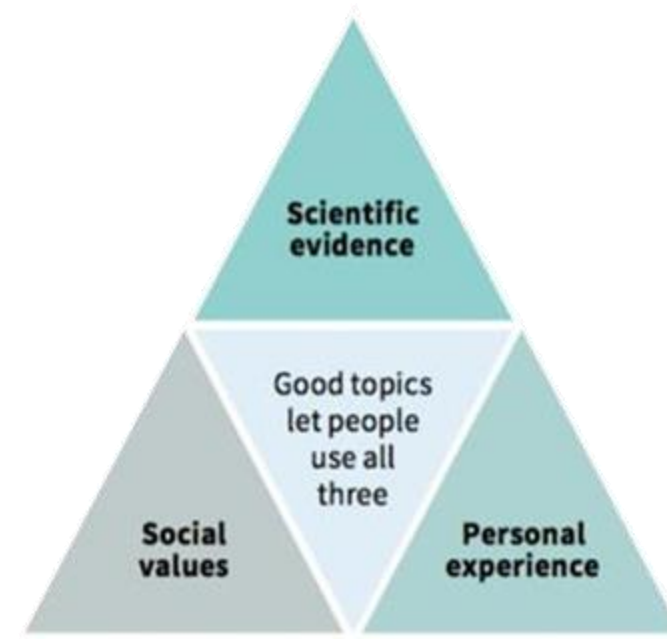
 **Mystic River**
WATERSHED ASSOCIATION

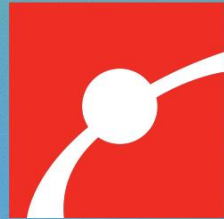
MAPC
METROPOLITAN AREA PLANNING COUNCIL

Public Forums

Forums engage participants in **deliberative, inclusive conversations** about climate hazards.

Forums use **interactive games and expert-led discussion** to engage diverse community members, scientists, and policymakers and **help them share perspectives and learn from one another.**





CENTER *for*
the ENVIRONMENT

David Sittenfeld (he/him/his)
Director, Center for the Environment
dsittenfeld@mos.org



Questions?



Accelerating Climate Resilience Speaker Series

Thanks for joining!

Stay tuned for more climate resilience webinars in the coming months!

