

Virtual Community Forum

Essex Open Space and Recreation Plan - 2026 Update

April 16, 2026

www.mapc.ma/essex-osrp



Agenda

1. Introductions and meeting logistics
2. What is an Open Space and Recreation Plan (OSRP)?
3. Essex OSRP process and timeline
4. Findings to date
5. Draft goals and strategies → Q&A and feedback
6. Next steps



1. Introductions & meeting logistics

Team introductions

Project Team



Valerie Massard, AICP, CFM
Town of Essex
Town Planner
Project oversight



Evelyne St-Louis
MAPC
Principal Land Use Planner
Project Manager



John Cruz, AICP
MAPC
Senior Housing and Land Use Planner
Project Co-Lead

Essex Open Space Committee

Julie Scofield (Chair)

Rebecca Davis

Lysa Leland

Stacie Capotosto

Janet Carlson

Housekeeping

- The presentation portion of this meeting will be recorded. The meeting recording, slides, and a short feedback form will be posted on the project website (www.mapc.ma/essex-osrp).
- Kindly remain on mute until dedicated discussion periods.
- Please hold your questions until the Q&A period. You are also welcome to put questions in the chat, and the project team will address them during Q&A.



Group guidelines

- Listen for understanding, not disagreement.
- Use “I” statements; speak for yourself or the group you represent, not for others.
- Consider the ideas and experiences of others.
- Take space, make space (take turns speaking, make room for others to speak)
- Bring a spirit of experimentation and creativity.



Introductions: Your turn!

- Please use the “Rename” feature on Zoom to update your name and/or affiliation.
- Let’s do a quick Zoom poll to get to know who’s in the room!





2. What is an Open Space and Recreation Plan (OSRP)?

What is an OSRP?

- A tool through which a community plans for the future of its **conservation** and **recreation** resources.
 - Address evolving conservation and recreational needs; identify priority actions and investments for a 10-year period.
- Allows a municipality to remain eligible to apply for certain state grants.
- Process is guided by requirements from Executive Office of Energy and Environmental Affairs (EEA).
Administrative approval is done locally + reviewed and approval by EEA.
- Last Essex OSRP is from 2016.



What is 'open space'?

- Includes conservation land, recreation land, forested land, agricultural land, parks, amenities, wetlands, natural features, and green buffers.
- Recreation includes both active and passive recreation.
- Open space can also refer to undeveloped or vacant land with conservation / recreation use or potential
- Varies by ownership and use



Required contents of an OSRP

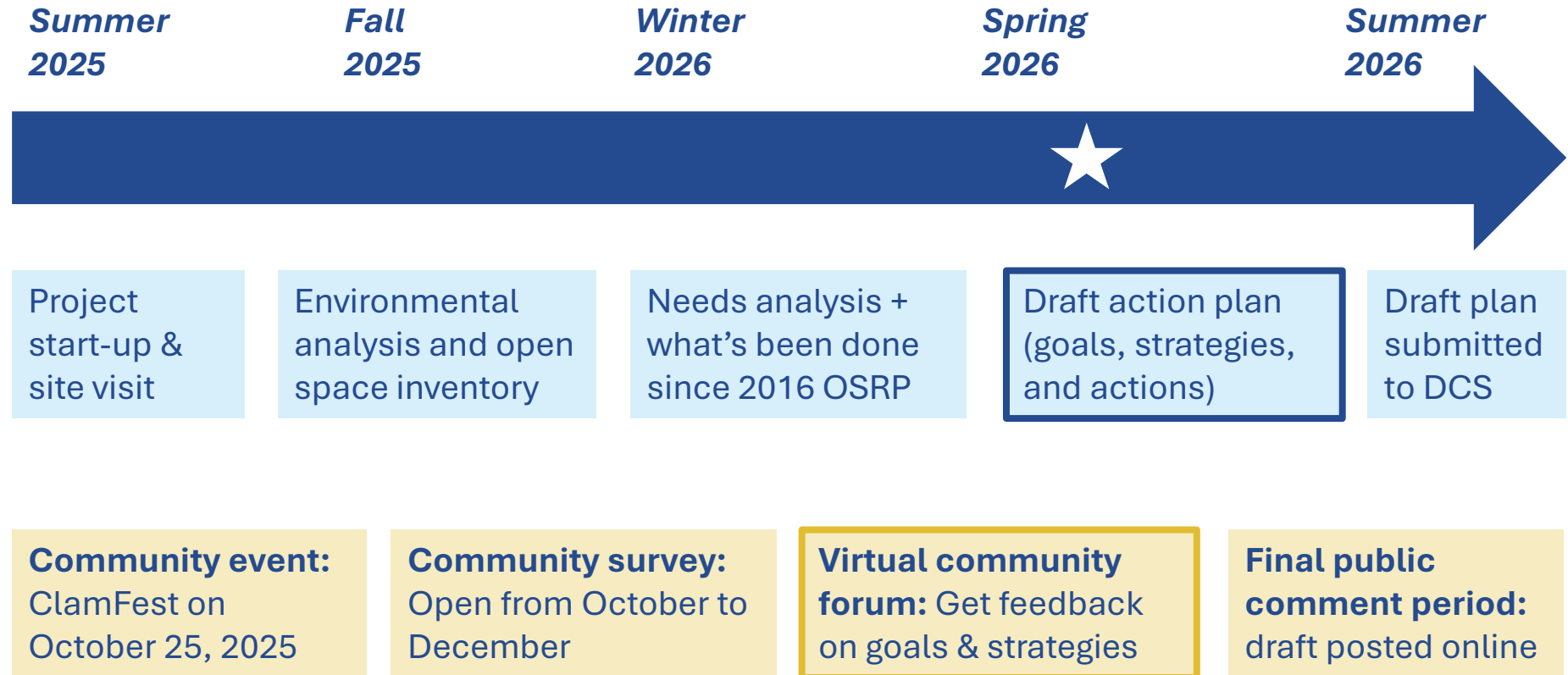
- **Introduction**
- **Community setting** – demographics; recent growth patterns
- **Existing conditions environmental analysis** – soils, water, biodiversity, climate change impacts, unique features and scenic environments
- **Conservation and recreation land inventory** – existing inventory of open space parcels
- **Analysis of needs** – summary of natural resource protection needs, recreation needs, and governance/management needs
- **Action plan** – Goals > Strategies > Actions for the next 10 years to address these needs, with identified responsible parties, timeline, and funding
- **Public comments** – summary of community engagement

 **Plan should be guided by input from community members**

A scenic view of a rocky shoreline. In the foreground, there's a rocky bank with a wooden chair sitting on a small patch of ground. The water is calm and blue, extending to a forested shoreline in the background. The sky is a clear blue with scattered white clouds. The overall scene is peaceful and natural.

3. Essex OSRP process and timeline

Timeline and process



Community engagement

- Survey open from Oct-Dec online and hard copies. Total 488 people engaged with the survey → **393 usable responses**
- Tabling at ClamFest in October 2025
- Tabling at Town Meeting in November 2025
- Distributed flyers at the transfer station, library, and senior center
- School district, YMCA, and nonprofit land trusts advertised opportunities to engage
- 1:1 conversations with locally active organizations
- Regular OSRP meetings (x5 so far) with the Open Space Committee throughout this past year for ongoing feedback and ideas



4. Findings so far

A scenic landscape photograph of a lake or bay. In the foreground, a stone wall runs along the left side, with a wooden chair placed on a small concrete pad. The water is a deep blue, and a rocky shoreline is visible in the middle ground. In the background, a dense line of trees with autumn foliage stretches across the horizon under a bright blue sky with scattered white clouds.

Accomplishments since 2016

Natural resource protection



- **Great Marsh ongoing restoration** led by The Trustees
- **Chebacco Lake / Alewife Brook ongoing remediation** of water quality and quantity.
- **Expansion of protected conservation land**, MECT 'Save Our Woods', Sagamore Hill, Pennoyer parcel
- Various studies on **coastal resilience**

Community recreation



- **Memorial Park** improvements to baseball viewing patio
- **Centennial Grove** new pavilion and bathrooms
- **Conomo Point** improvements to Riverfront Park
- **Paglia Park** minor renovations
- **Expanded contract with YMCA**, renewed 2023-2028

Management & governance



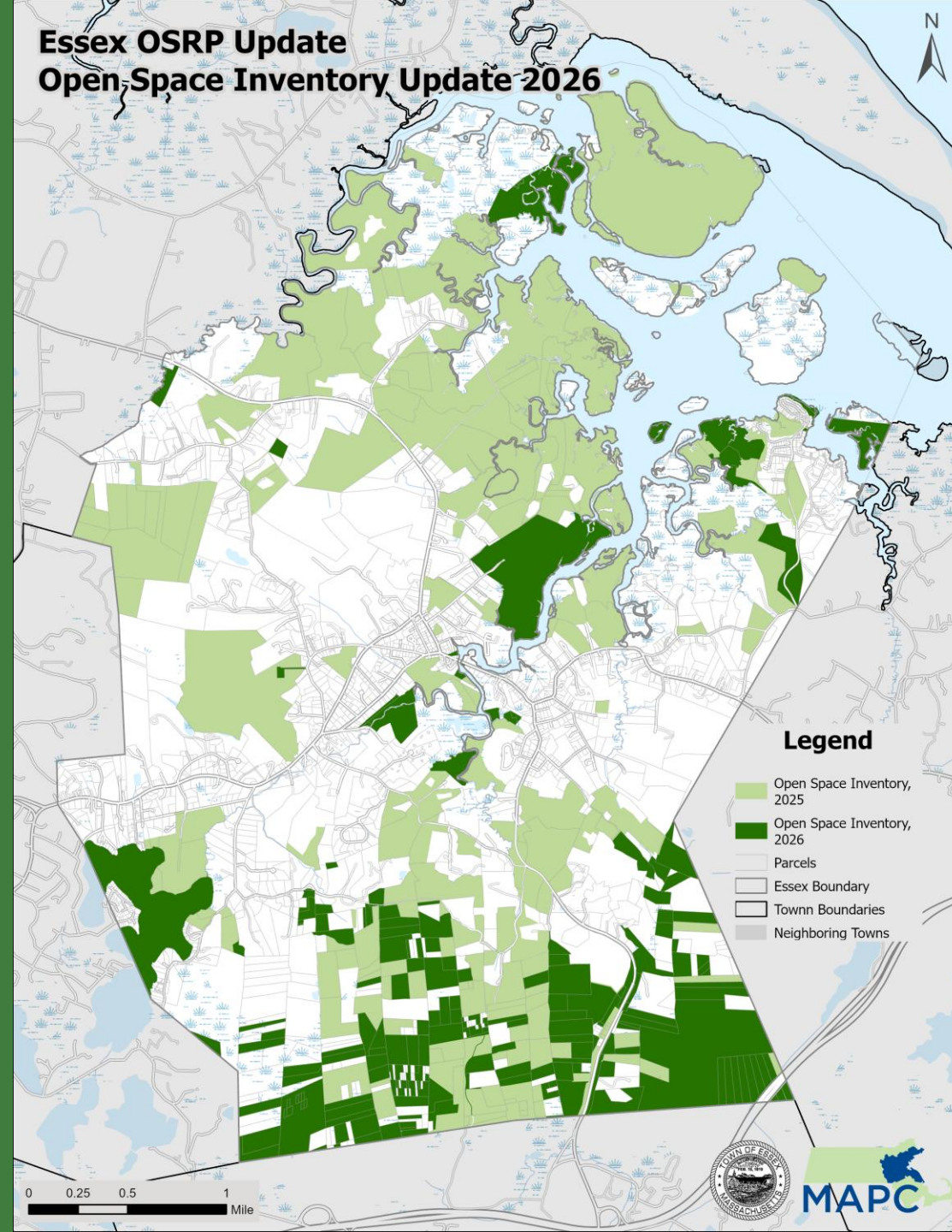
- Ongoing relationship with **nonprofit land trusts**
- Expanded partnership and contract with the **YMCA**
- Partnership with the **Senior Center** for programming
- Town joined the **North Shore Communities Coalition**

Environmental & land analysis

- Updates to the Town's open space inventory
- Mapping of other relevant existing conditions:
 - Soils
 - Water resources
 - Biodiversity
 - Climate change impacts
 - Unique features and scenic environments
 - *You can find these on the project website*
- Regional inventory of recreational resources beyond town borders

Town of Essex 2026 OSRP Update

Essex OSRP Update Open Space Inventory Update 2026



- Updated open space inventory now includes:
 - Everything owned by nonprofit land trusts
 - All municipally-owned woodlots, salt marsh lots, and other areas that are being held for conservation.
 - Municipally-owned recreation areas such as the Town Landing, Paglia Park, Clammer's Beach, etc.
 - Parcels previously overlooked, such as Cogswell's Grant
- 25% increase in land area in open space inventory, equivalent to an additional 1.3 square miles

Themes from the survey



Environmental protection



Recreational needs



Water resources



Walking and biking opportunities



Awareness and education



Organizational concerns



Very strong support for environmental protection of conservation areas and maintenance of existing resources. **However, there is debate about how much *more land* should be preserved** for conservation due to fiscal / other priorities.



Lack of recreational opportunities in Essex due to:

- (1) Existing facilities being in disrepair (tennis courts, playground, Centennial Grove)
- (2) Lack of desired recreational amenities (soccer, pickleball)

Higher priority placed on maintenance of existing recreation open space – rather than acquiring ***new*** land for recreation.



Desired for **improved access to Essex water resources**, which are seen as great assets (waterfront and Chebacco Lake). However, there is debate about how/whether to expand access, vs. maintain limited access for residents only.



Need for more **walking, hiking, and biking connectivity** in general, with some specific sites and areas noted more often than others.



Lack of awareness can be a barrier to use of open space. Desire for more awareness, education, and communication about resources and benefits.



Some management & governance issues raised. E.g. no centralized parks department or recreation center; trail maintenance, etc.

Summary of needs: Natural resource protection



1. Protect and restore existing natural resource areas, including:

- Great Marsh – issues of salt marsh restoration & management
- Essex River & Estuary– issues of excessive sedimentation; flooding
- Chebacco Lake and Alewife Brook – issues of watershed quality and quantity for both human water supplies and biodiversity.
- Manchester-Essex Woods –forest protection; clarity over management & governance
- Certified vernal pools

2. Pursue continued strategic and high priority expansion of conservation lands to achieve overlapping climate resiliency, biodiversity, and connectivity goals

3. Protect key scenic landscapes and viewsheds

4. Protect key farmland of importance

Summary of needs: Community recreation



1. Maintenance of existing recreational assets:

- Memorial Park and Centennial Grove (access and disrepair issues)
- Trail management

2. Desire for new active recreational assets:

- Manchester-Essex School District + Manchester Athletic Fields Master Plan identified specific needs for athletic facilities
- Soccer, pickleball, splash pads and playgrounds most frequently mentioned

3. Improved access to water resources

- Need for easier access to Essex River, Conomo Point, Chebacco Lake

4. Desire for more recreation & programming for specific age groups:

- Youth programming, senior programming; needs specific to persons with disabilities

5. Need for bicycle infrastructure

- Better bike path access generally noted as lacking in all of Essex. Most frequently mentioned was connection to Manchester via Southern Ave + access to Conomo Point

Summary of needs: Management & governance



1. Need for greater education and awareness amongst the community

- Lack of awareness of existing open space resources
- Need for more education about the *value* of open space

2. Need for more coordinated and proactive maintenance of existing open space

- Town-owned land identification, and capacity for proactive land management
- Collaboration with other major landowners – especially nonprofit land trusts.

3. Need for a more proactive approach to future land conservation

- Need for a more proactive approach to highest priority land for conservation given competing goals in the Town.

4. Need for better ongoing administration open space inventory related data

- Need for ongoing updates to the tabular and spatial database of the Essex open space inventory as parcels are acquired or uses change.



**5. Draft Goals and Strategies →
Q&A and Feedback**

Action plan

	Priority	Timeline	Funding	Responsible Party
Goal A.				
Strategy A.1.				
Action				
Action				
Strategy A.2.				
Action				
Action				
Goal B.				
Strategy B.1.				
Action				
Action				
etc.				

Focus for today

	Priority	Timeline	Funding	Responsible Party
Goal A.				
Strategy A.1.				
Action				
Action				
Strategy A.2.				
Action				
Action				
Goal B.				
Strategy B.1.				
Action				
Action				
etc.				

Q&A and discussion

- We will now shift to the interactive portion of this session:
 - We will first provide an overview of all five draft goals.
 - We will then walk through the strategies under each goal.
 - We will pause after Goal A, Goal B, Goal C, and after Goals D & E for a short Zoom poll and comment period.
- Before we start, are there any clarifying questions?

Overview of goals

Goal A. Protect, preserve, and enhance conservation areas and scenic open spaces in Essex

Goal B. Improve and expand recreational opportunities and access for all Essex community members

Goal C. Improve public education and awareness of existing open space resources and needs

Goal D. Strengthen the Town's capacity and governance for preserving and protecting open space

Goal E. Strengthen the Town's administration and documentation of existing and future open space

Goal A. Protect, preserve, and enhance conservation areas and scenic open spaces in Essex

- **Strategy A.1.** Continue to restore and protect the singular and threatened habitats of Essex.
- **Strategy A.2.** Strategically expand conservation areas to achieve wildlife corridors of contiguous parcels that protect the major habitat types in Essex, in order to meet overlapping biodiversity, connectivity, and climate resiliency goals.
- **Strategy A.3.** Preserve and protect the unique scenic open spaces of Essex.
- **Strategy A.4.** Partner with neighboring municipalities on conservation goals for natural resources that cross municipal boundaries.
- **Strategy A.5.** Have the Open Space Committee take a more active role in advocating for the preservation of high priority, strategic open space uses.

Goal A. Protect, preserve, and enhance conservation areas and scenic open spaces in Essex

- **Strategy A.1.** Continue to restore and protect the singular and threatened habitats of Essex.
- **Strategy A.2.** Strategically expand conservation areas to achieve wildlife corridors of contiguous parcels that protect the major habitat types in Essex, in order to meet overlapping biodiversity, connectivity, and climate resiliency goals.
- **Strategy A.3.** Preserve and protect the unique scenic open spaces of Essex.
- **Strategy A.4.** Partner with neighboring municipalities on conservation goals for natural resources that cross municipal boundaries.
- **Strategy A.5.** Have the Open Space Committee take a more active role in advocating for the preservation of high priority, strategic open space uses.

Zoom poll!

Goal B. Improve and expand recreational opportunities and access for all Essex community members

- **Strategy B.1.** Improve maintenance of existing town-owned recreational facilities and trails.
- **Strategy B.2.** Improve and/or expand the existing playgrounds at Memorial Park and Essex Elementary School.
- **Strategy B.3.** Support the MESD's need to expand athletic facilities, especially (1) tennis courts, (2) regulation-size softball/baseball diamonds, (3) track & field, and support implementation of the Manchester Athletic Fields Master Plan.
- **Strategy B.4.** Support the possibility of other new recreational amenities in the Essex region, such as pickleball courts and soccer fields.
- **Strategy B.5.** Implement new bicycle lanes, which both improve access and also represent a form of recreation in and of themselves.
- **Strategy B.6.** Improve kayak/canoe access to water-based recreational resources in Essex, including Chebacco Lake, Essex River and River Basin, and Conomo Point
- **Strategy B.7.** Strengthen recreational programming for all demographic groups, with a focus on (1) youth and families, (2) seniors, and (3) persons with disabilities.

Goal B. Improve and expand recreational opportunities and access for all Essex community members

- **Strategy B.1.** Improve maintenance of existing town-owned recreational facilities and trails.
- **Strategy B.2.** Improve and/or expand the existing playgrounds at Memorial Park and Essex Elementary School.
- **Strategy B.3.** Support the MESD's need to expand athletic facilities, especially (1) tennis courts, (2) regulation-size softball/baseball diamonds, (3) track & field, and support implementation of the Manchester Athletic Fields Master Plan.
- **Strategy B.4.** Support the possibility of other new recreational amenities in the Essex region, such as pickleball courts and soccer fields.
- **Strategy B.5.** Implement new bicycle lanes, which both improve access and also represent a form of recreation in and of themselves.
- **Strategy B.6.** Improve kayak/canoe access to water-based recreational resources in Essex, including Chebacco Lake, Essex River and River Basin, and Conomo Point
- **Strategy B.7.** Strengthen recreational programming for all demographic groups, with a focus on (1) youth and families, (2) seniors, and (3) persons with disabilities.

Zoom poll!

Goal C. Improve public education and awareness of existing open space resources and needs

- **Strategy C.1.** Provide more information online (e.g., Town website and/or social media) about existing open spaces and recreation resources in Essex and the surrounding region.
- **Strategy C.2.** Grow the network of known supporters of open space and recreation in Essex.
- **Strategy C.3.** Use creative outlets to disseminate information about the challenges and opportunities to protect Essex's natural resources.
- **Strategy C.4.** Update, digitize, and promote the Open Space Committee's brochure guide to the open spaces of Essex.

Goal C. Improve public education and awareness of existing open space resources and needs

- **Strategy C.1.** Provide more information online (e.g., Town website and/or social media) about existing open spaces and recreation resources in Essex and the surrounding region.
- **Strategy C.2.** Grow the network of known supporters of open space and recreation in Essex.
- **Strategy C.3.** Use creative outlets to disseminate information about the challenges and opportunities to protect Essex's natural resources.
- **Strategy C.4.** Update, digitize, and promote the Open Space Committee's brochure guide to the open spaces of Essex.

Zoom poll!

Goal D. Strengthen the Town's capacity and governance for preserving and protecting open space

- **Strategy D.1.** Improve communication among Town Boards and NGOs regarding open space in Essex.
- **Strategy D.2.** Increase capacity and training available for the Open Space Committee.
- **Strategy D.3.** Adopt and use the regulatory and legal tools available to aid open space preservation.
- **Strategy D.4.** Identify grant opportunities and apply for funding to purchase parcels, development rights, or conservation easements.
- **Strategy D.5.** Seek additional resources to strengthen the Town capacity for open space management.

Goal E. Strengthen the Town's administration and documentation of existing and future open space

- **Strategy E.1.** On the Town's GIS webpage, update the open space inventory shapefile to reflect the 2026 OSRP updates.
- **Strategy E.2.** Assign a specific Town staff person or Board member to update the open space inventory on a regular basis.

Goal D. Strengthen the Town's capacity and governance for preserving and protecting open space

Goal E. Strengthen the Town's administration and documentation of existing and future open space

Zoom poll!

A scenic view of a rocky coastline. In the foreground, a stone wall and a wooden chair are visible on a rocky shore. The middle ground shows a body of water with a rocky beach and a small island. The background features a dense forest of trees under a blue sky with scattered white clouds.

6. Next steps

Next steps

- Meeting recording, slides, and an online version of the polls will be posted on the project website early next week.
- Feedback will be incorporated. The full draft plan will be posted online for public comment in June.
- The final draft plan will be submitted to the state at the end of June.



Project website: www.mapc.ma/essex-osrp

Thank you!

Valerie Massard, Town of Essex - vmassard@essexma.org

Evelyne St-Louis, MAPC - est-louis@mapc.org

John Cruz, MAPC - jcruz@mapc.org

www.mapc.ma/essex-osrp



A scenic view of a lake with a stone wall and a chair in the foreground, and a forested shoreline in the background under a blue sky with clouds.

Appendix. Existing Conditions Maps

Regional Context



- Town Highlight
- Open Space
- MBTA Rapid Transit Lines
- MBTA Commuter Rail
- MassDOT Interstate
- Interstate
- U.S. Highway
- State Route
- MBTA Rapid Transit Stations

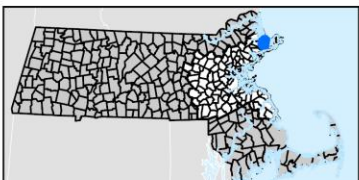


The information depicted on this map is for planning purposes only. It is not adequate for legal boundary definition, regulatory interpretation, or parcel-level analysis.

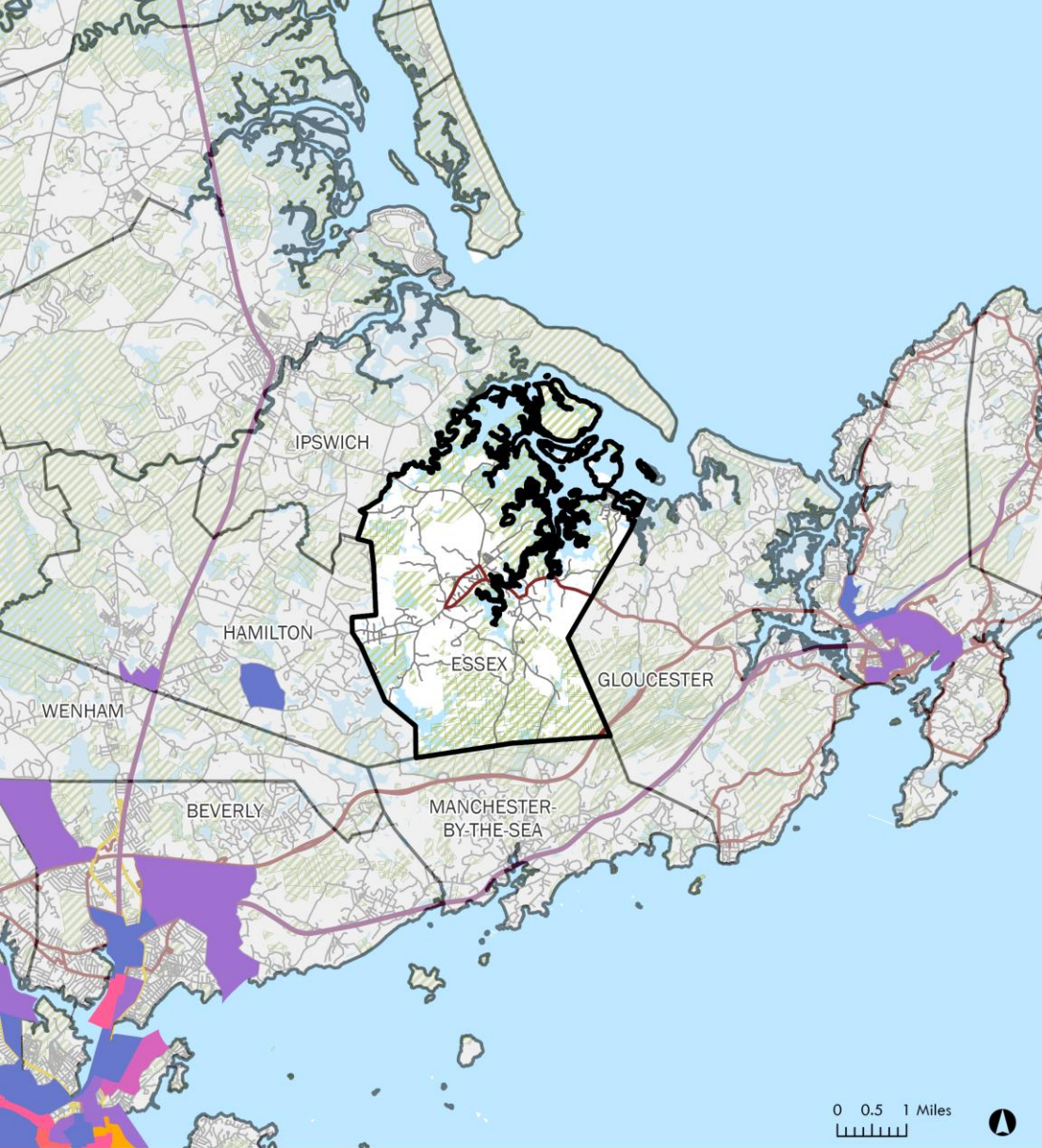
*Produced by:
Metropolitan Area Planning Council (MAPC)
60 Temple Place, Boston, MA 02111 | 617-933-0700*

Data sources: MAPC, MassGIS, MassDOT, Town of Essex

APRIL 2026



Environmental Justice Communities



- Open Space
 - Commuter Rail
 - MBTA Bus Routes
 - RTA Bus Routes
- Environmental Justice (EJ) Block Groups**
- Minority
 - Low Income
 - Language Isolation
 - Minority & Low Income
 - Minority & Language Isolation
 - Income & Language Isolation
 - Minority, Low Income & Language Isolation

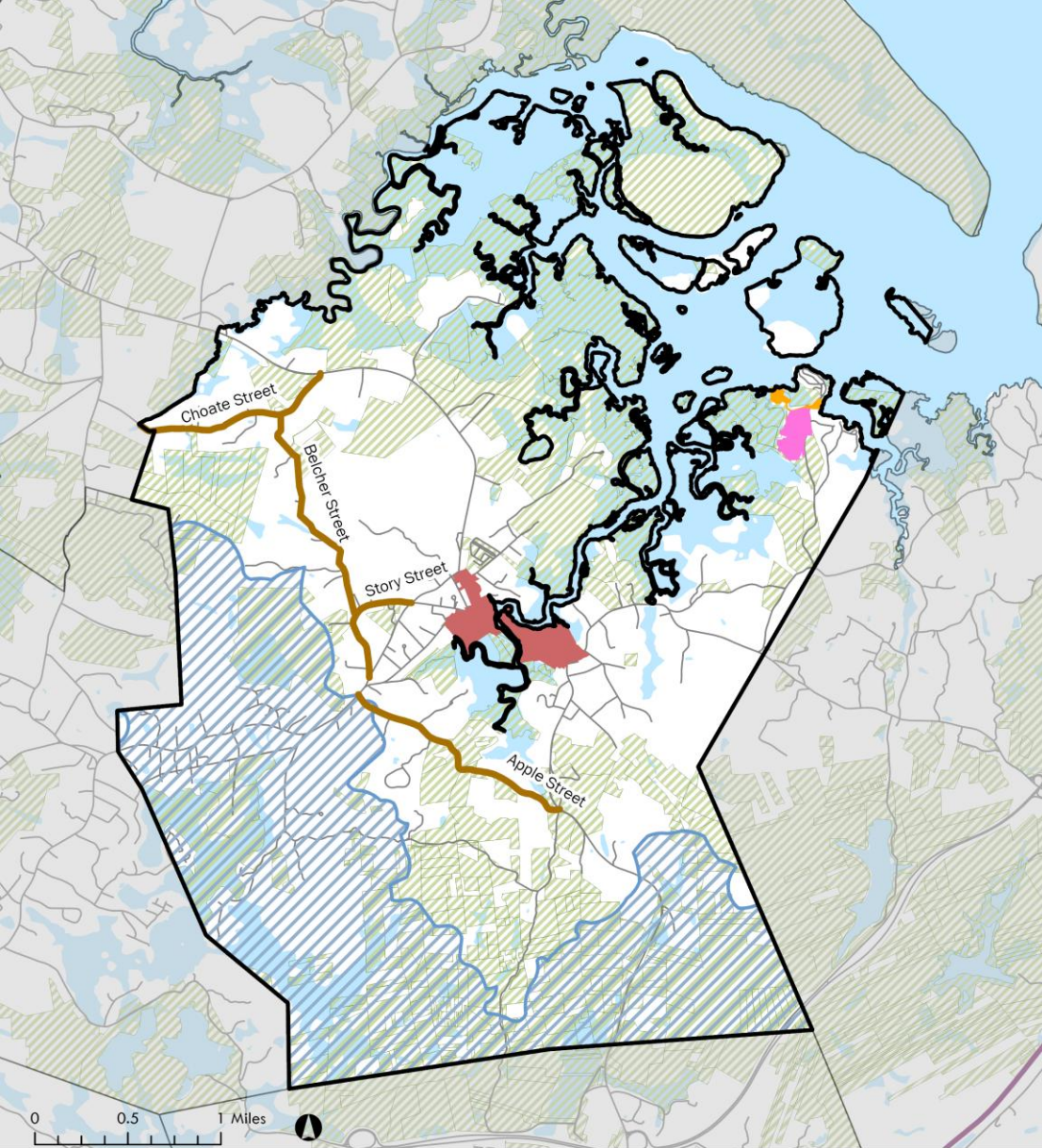
The information depicted on this map is for planning purposes only. It is not adequate for legal boundary definition, regulatory interpretation, or parcel-level analysis.

Produced by:
Metropolitan Area Planning Council (MAPC)
60 Temple Place, Boston, MA 02111 |
617-933-0700

Data sources: MAPC, MassGIS, MassDOT, Town of Essex

APRIL 2026

Existing Zoning



- Zoning Districts**
- Downtown District
 - Central Conomo Point Zoning District
 - Southern Conomo Point Zoning District
 - Water Protection Overlay District
- Town Designated Scenic Roads**
- Town Designated Scenic Roads
 - Open Space

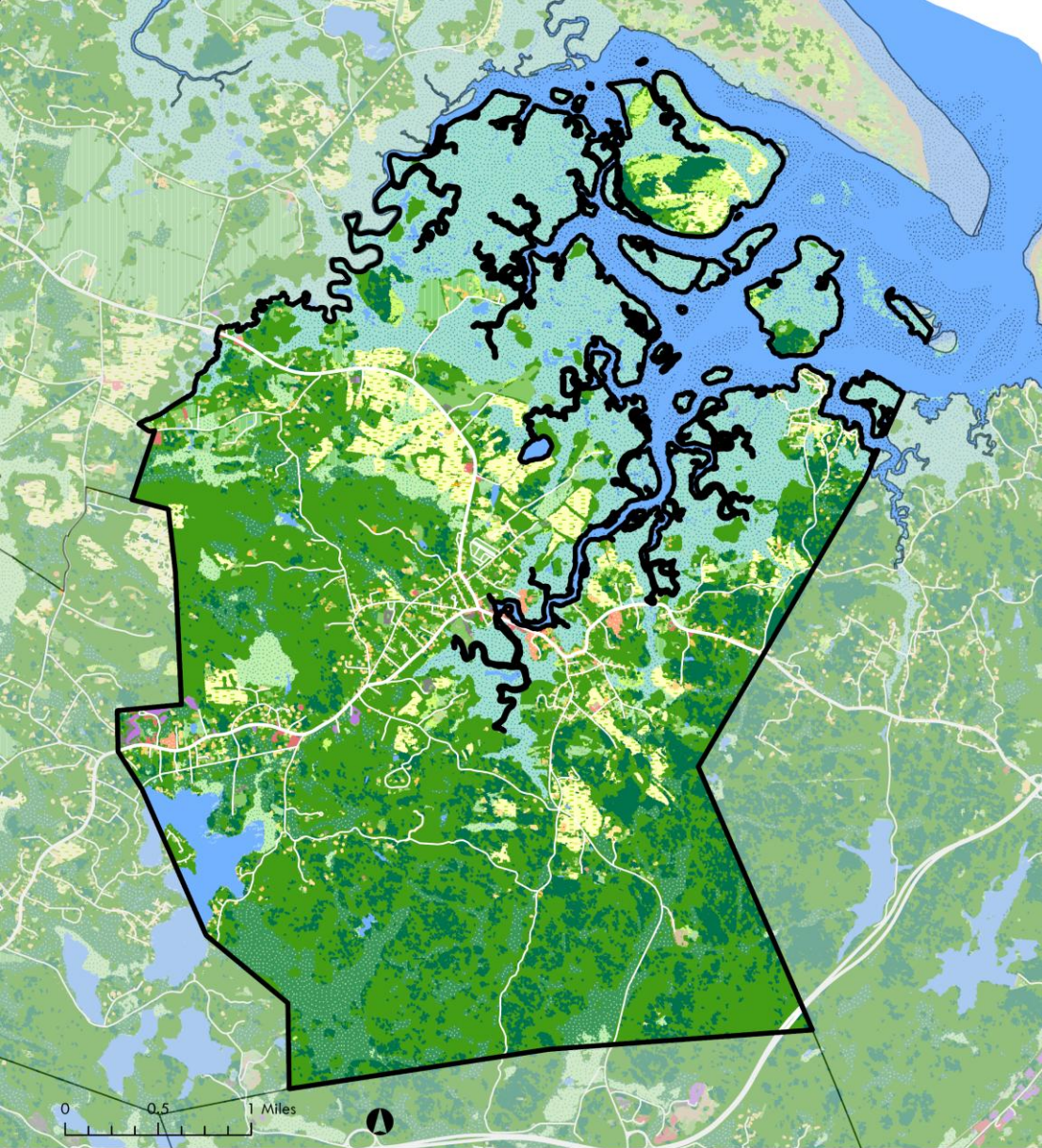
The information depicted on this map is for planning purposes only. It is not adequate for legal boundary definition, regulatory interpretation, or parcel-level analysis.

*Produced by:
Metropolitan Area Planning Council (MAPC)
60 Temple Place, Boston, MA 02111 |
617-933-0700*

Data sources: MAPC, MassGIS, MassDOT, Town of Essex

APRIL 2026

Land Use Cover



Land Use Cover			
	Residential - Single Family		Mixed Use - Primarily Residential
	Residential - Multi-Family		Mixed Use - Primarily Commercial
	Residential - Other		Mixed Use - Other
	Commercial		Other Impervious
	Industrial		Right-of-way
			Cultivated
			Pasture/Hay
			Developed Open Space
			Deciduous Forest
			Evergreen Forest
			Grassland
			Scrub/Shrub
			Bare Land
			Forested Wetland
			Non-forested Wetland
			Saltwater Wetland
			Water
			Unconsolidated Shore
			Aquatic Bed

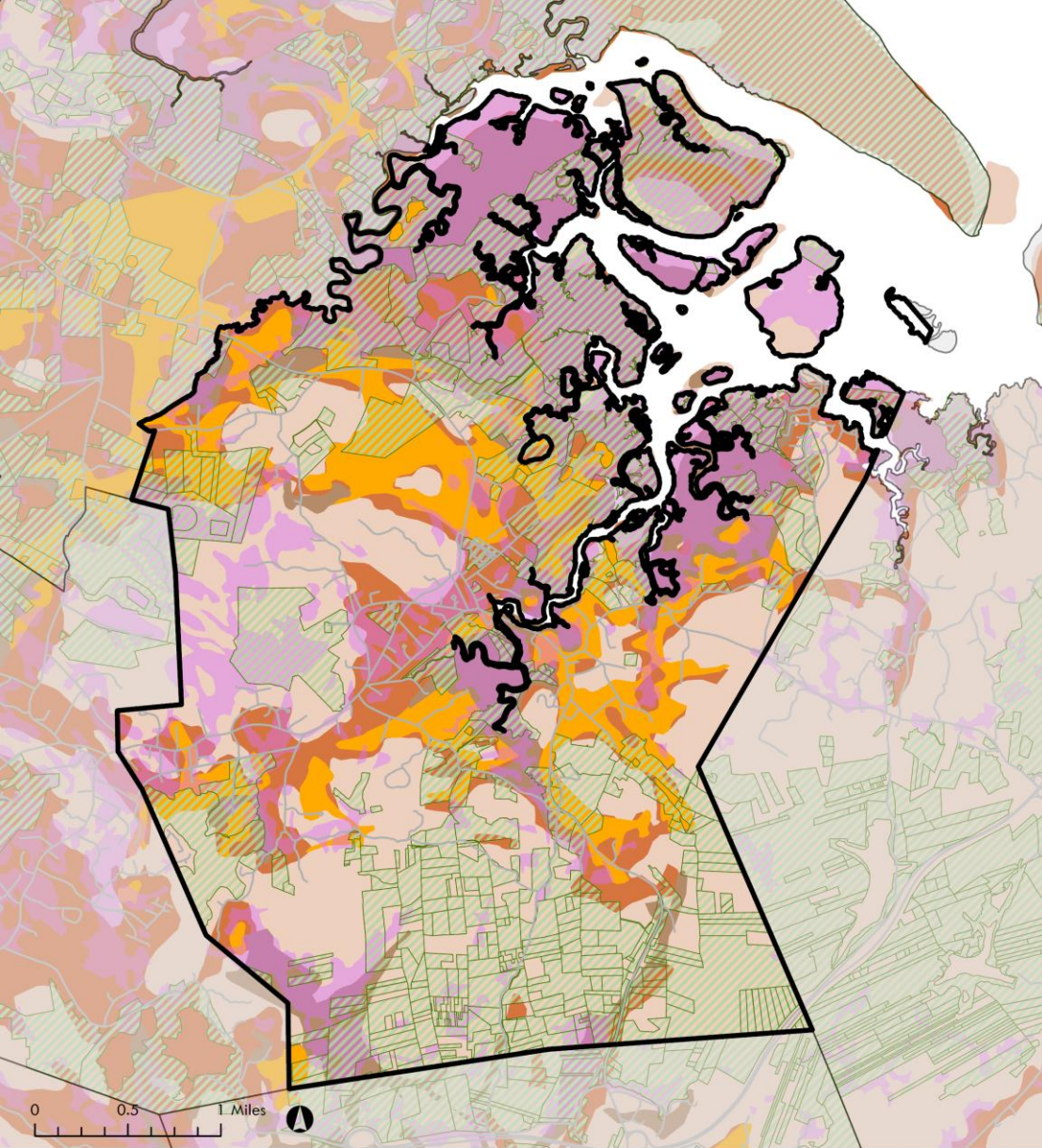
The information depicted on this map is for planning purposes only. It is not adequate for legal boundary definition, regulatory interpretation, or parcel-level analysis.

Produced by:
Metropolitan Area Planning Council (MAPC)
60 Temple Place, Boston, MA 02111 |
617-933-0700

Data sources: MAPC, MassGIS, MassDOT, Town of Essex

APRIL 2026

Soils and Topography



Surficial Geology

- Sand and Gravel
- Till or Bedrock
- Fine-Grained Deposit
- Floodplain Alluvium

- Farmland of Unique Importance
- Open Space

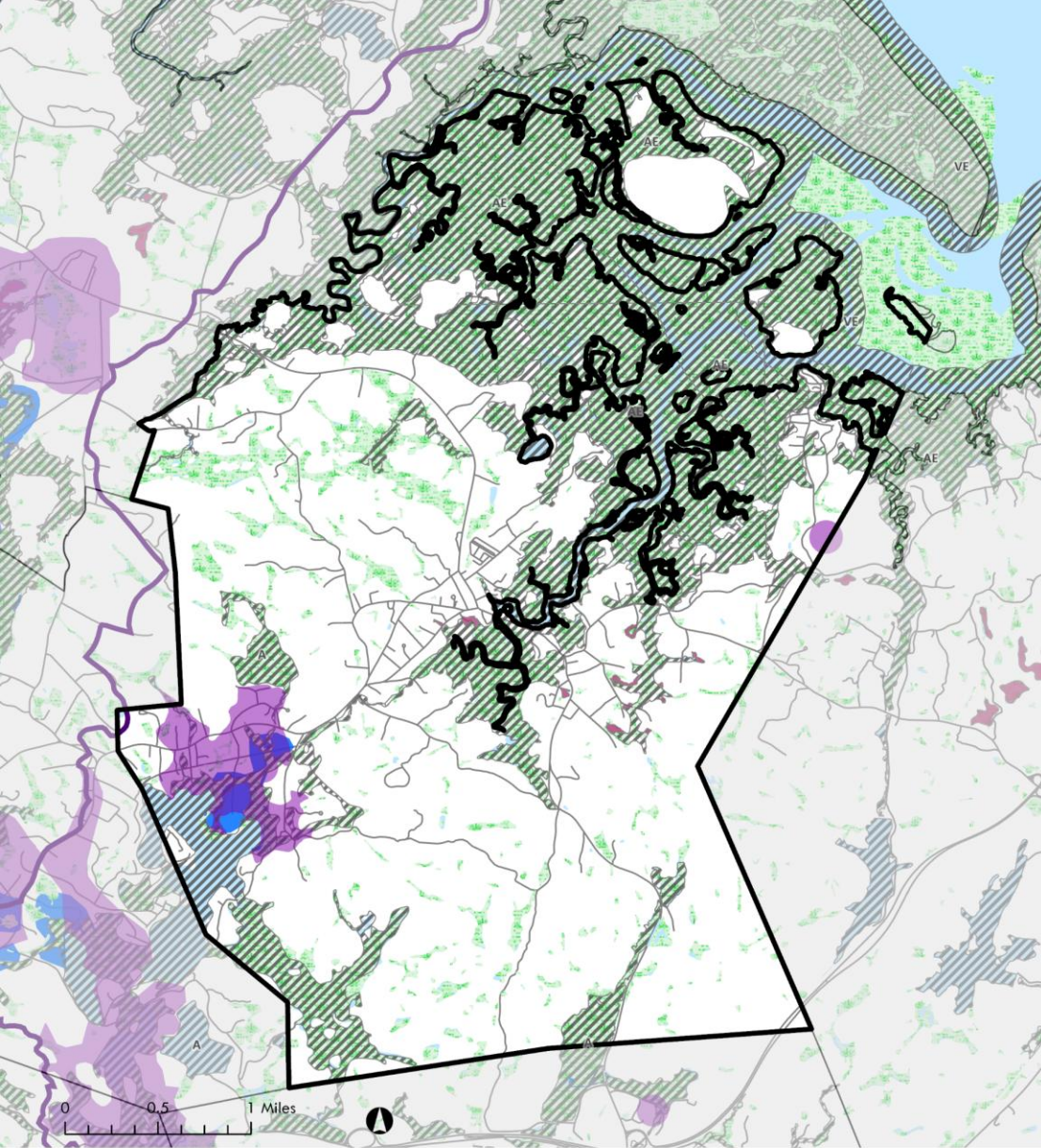
The information depicted on this map is for planning purposes only. It is not adequate for legal boundary definition, regulatory interpretation, or parcel-level analysis.

Produced by:
Metropolitan Area Planning Council (MAPC)
60 Temple Place, Boston, MA 02111 |
617-933-0700

Data sources: MAPC, MassGIS, MassDOT, Town of Essex

APRIL 2026

Water Resources



- | | |
|---------------------------|-------------------|
| Major Watersheds | FEMA Flood Hazard |
| Wetlands | High Risk |
| Wellhead Protection Areas | Moderate Risk |
| Aquifers | Low Risk |
| Surface Water | Area Not Included |

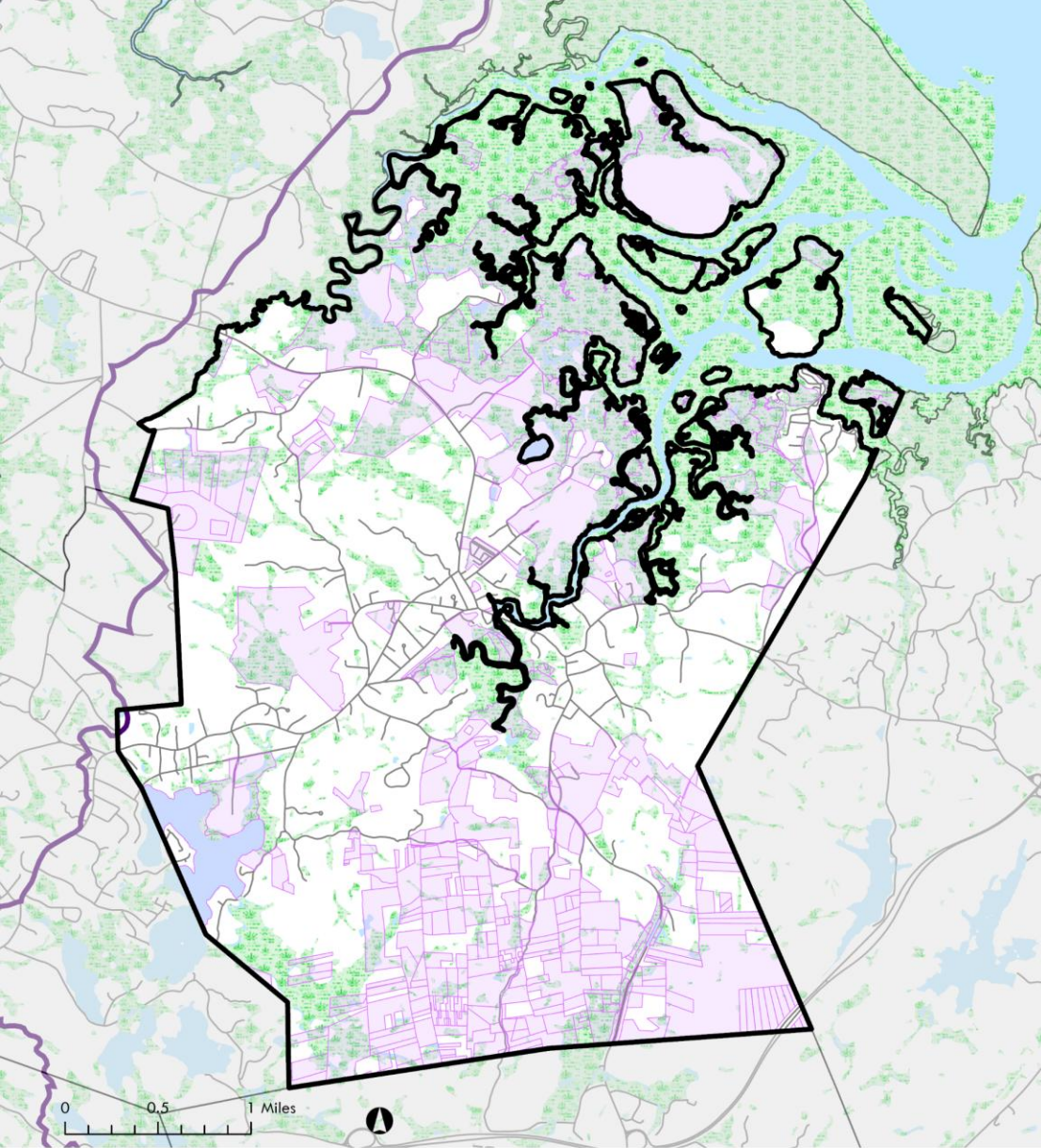
The information depicted on this map is for planning purposes only. It is not adequate for legal boundary definition, regulatory interpretation, or parcel-level analysis.

Produced by:
Metropolitan Area Planning Council (MAPC)
60 Temple Place, Boston, MA 02111 |
617-933-0700

Data sources: MAPC, MassGIS, MassDOT, Town of Essex

APRIL 2026

Water Resources – Wetlands and Open Space Only



-  Wetlands
-  Surface Water
-  Major Watersheds
-  Essex Open Space Inventory 2026

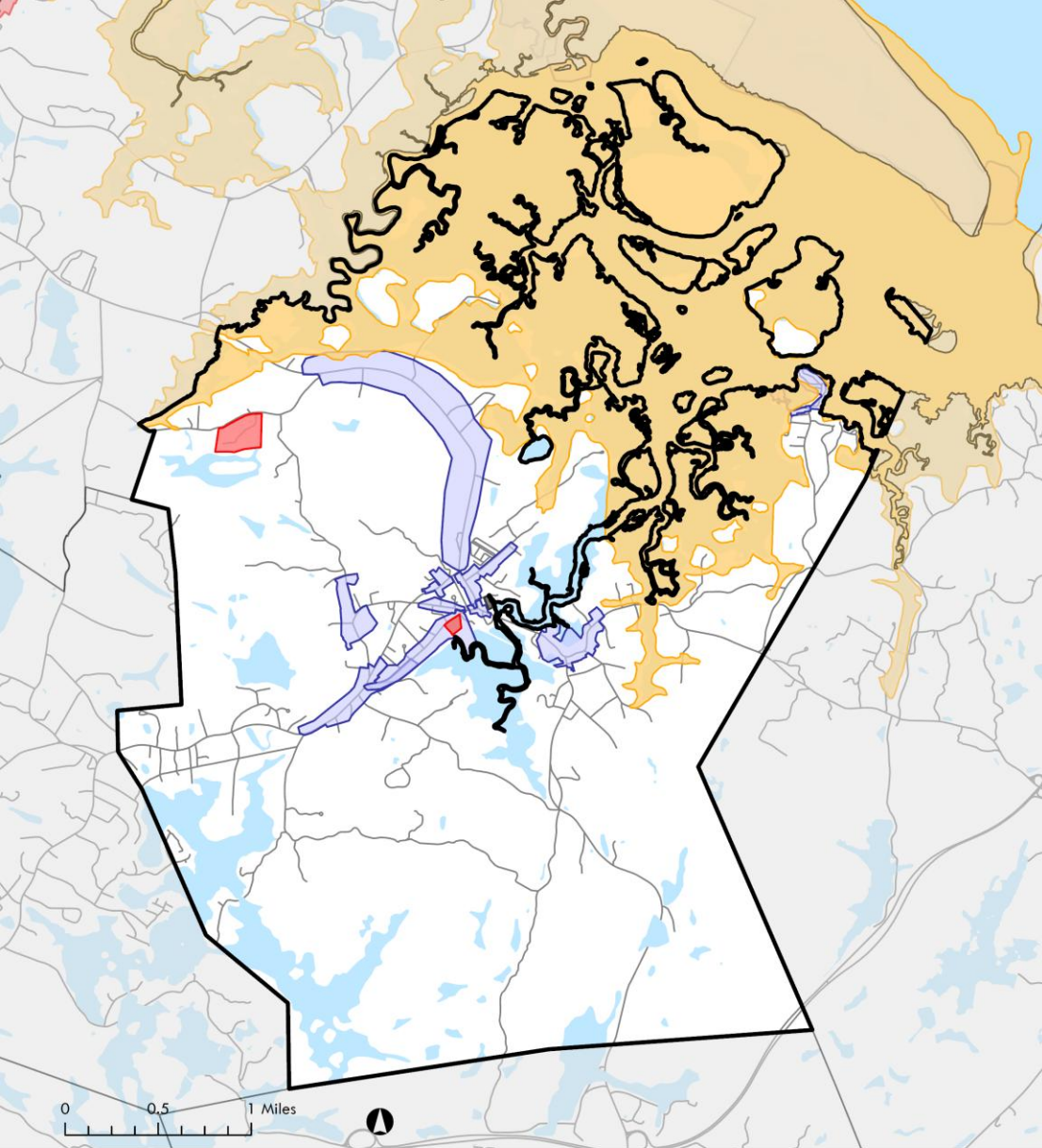
The information depicted on this map is for planning purposes only. It is not adequate for legal boundary definition, regulatory interpretation, or parcel-level analysis.

*Produced by:
Metropolitan Area Planning Council (MAPC)
60 Temple Place, Boston, MA 02111 |
617-933-0700*

Data sources: MAPC, MassGIS, MassDOT, Town of Essex

APRIL 2026

Unique Features and Scenic Environments



- | | | |
|--|--|--|
| Areas of Critical Environmental Concern | MassHistoric Commission Inventory (Areas) | Massachusetts Historic Landmark |
| Areas of Critical Environmental Concern | NRHP (National Register of Historic Places) | Massachusetts Historic Landmark |
| | Local Historic District (LHD) | Inventoried Property |
| | NRHP and LHD | |
| | Preservation Restriction | |

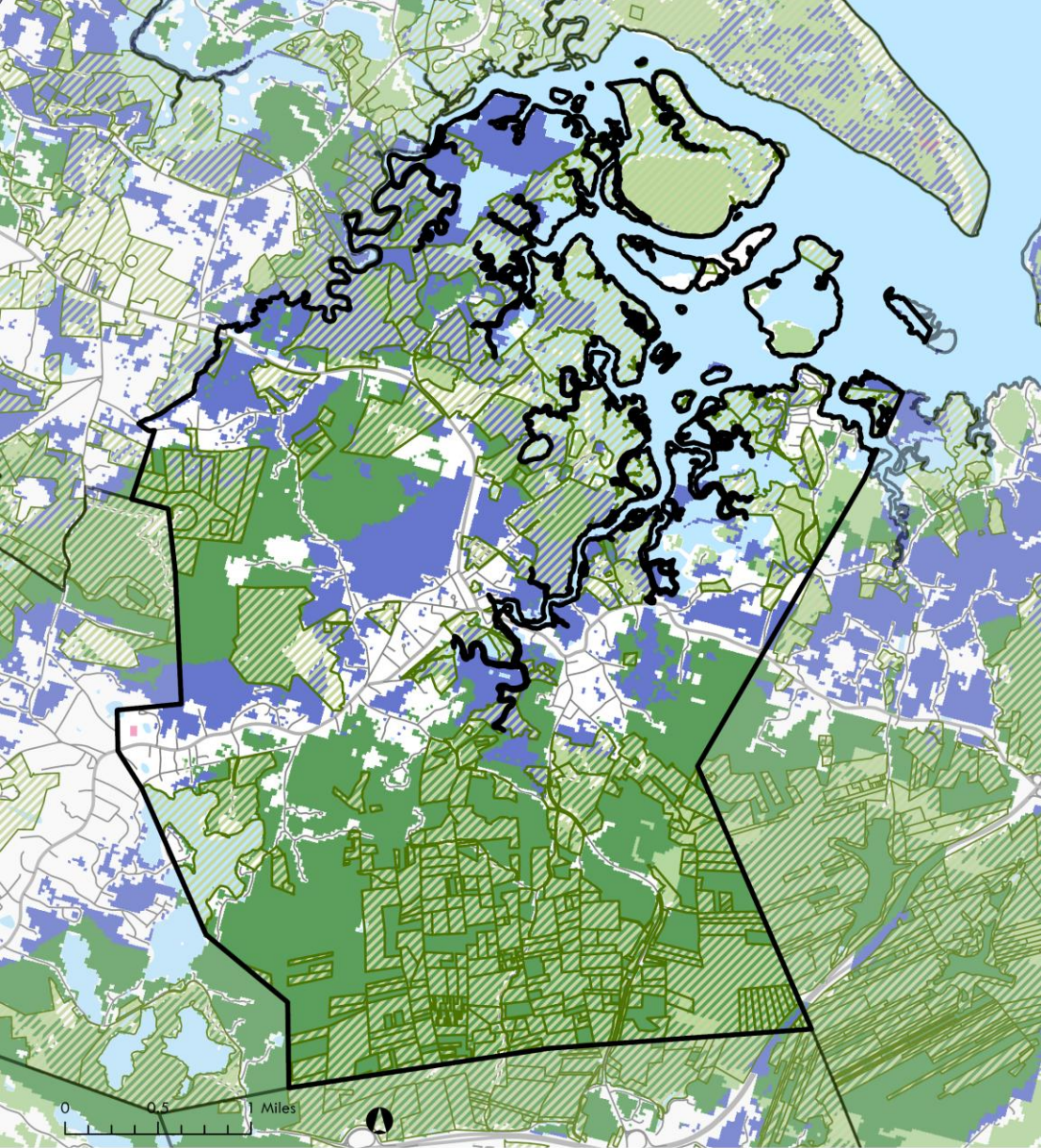
The information depicted on this map is for planning purposes only. It is not adequate for legal boundary definition, regulatory interpretation, or parcel-level analysis.

Produced by:
Metropolitan Area Planning Council (MAPC)
60 Temple Place, Boston, MA 02111 |
617-933-0700

Data sources: MAPC, MassGIS, MassDOT,
Massachusetts Cultural Resource Information
System, Town of Essex

APRIL 2026

Climate Change Impacts



Resilient and Connected Network TNC Customized (Simple)

- High Resilience, High Flow, and Recognized Biodiversity
- High Resilience and High Flow
- High Resilience and Recognized Biodiversity

Average Resilience with Biodiversity and/or High Flow

Tribal lands excluded (pending review)

Regional Heat Hot Spots

Regional Heat Hot Spots

Open Space

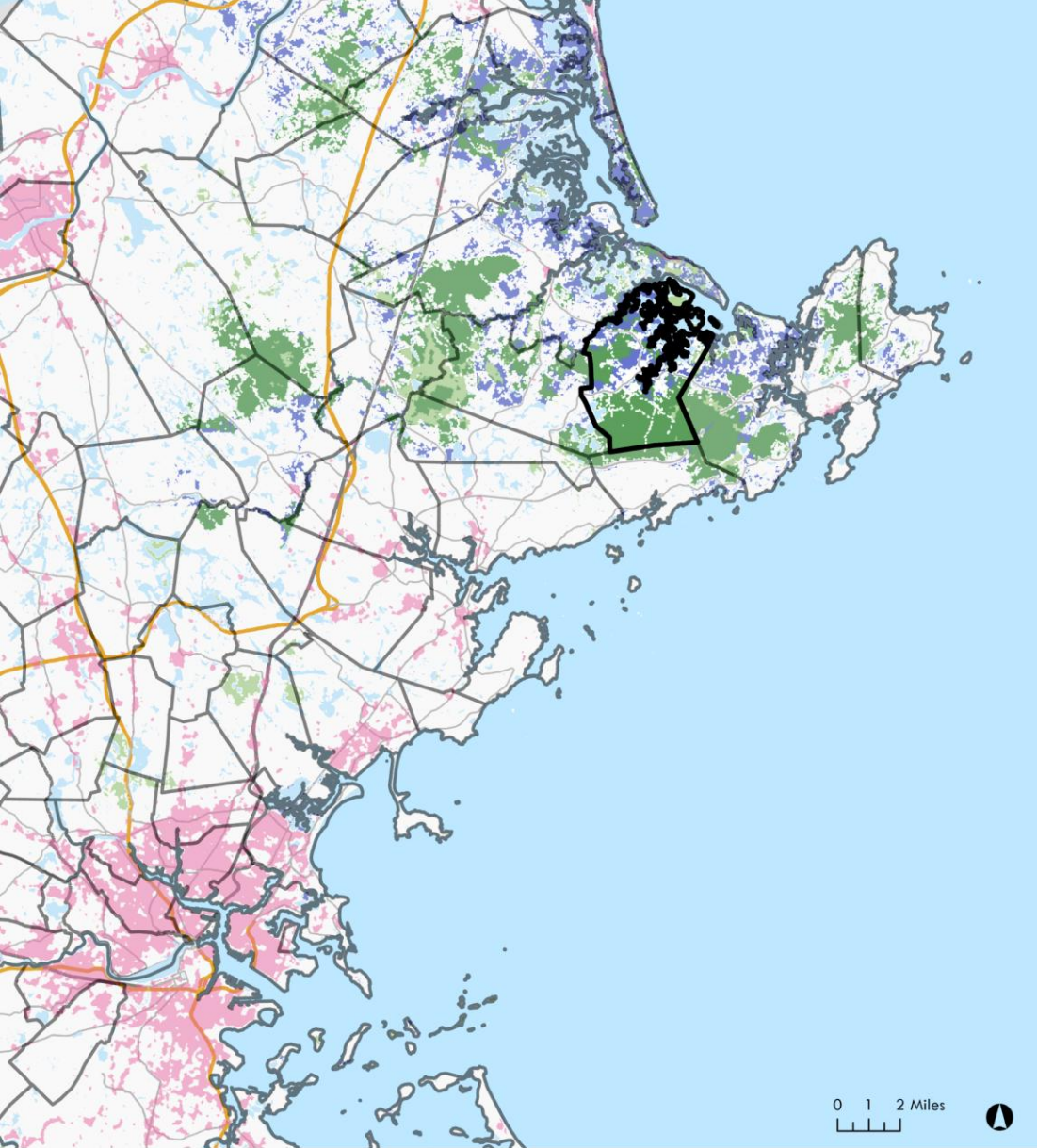
The information depicted on this map is for planning purposes only. It is not adequate for legal boundary definition, regulatory interpretation, or parcel-level analysis.

Produced by:
Metropolitan Area Planning Council (MAPC)
60 Temple Place, Boston, MA 02111 |
617-933-0700

Data sources: MAPC, MassGIS, MassDOT, Town of Essex

APRIL 2026

Climate Change Impacts – Regional Context



Resilient and Connected Network TNC Customized (Simple)

- High Resilience, High Flow, and Recognized Biodiversity
- High Resilience and High Flow
- High Resilience and Recognized Biodiversity

Average Resilience with Biodiversity and/or High Flow

Tribal lands excluded (pending review)

Regional Heat Hot Spots

Regional Heat Hot Spots

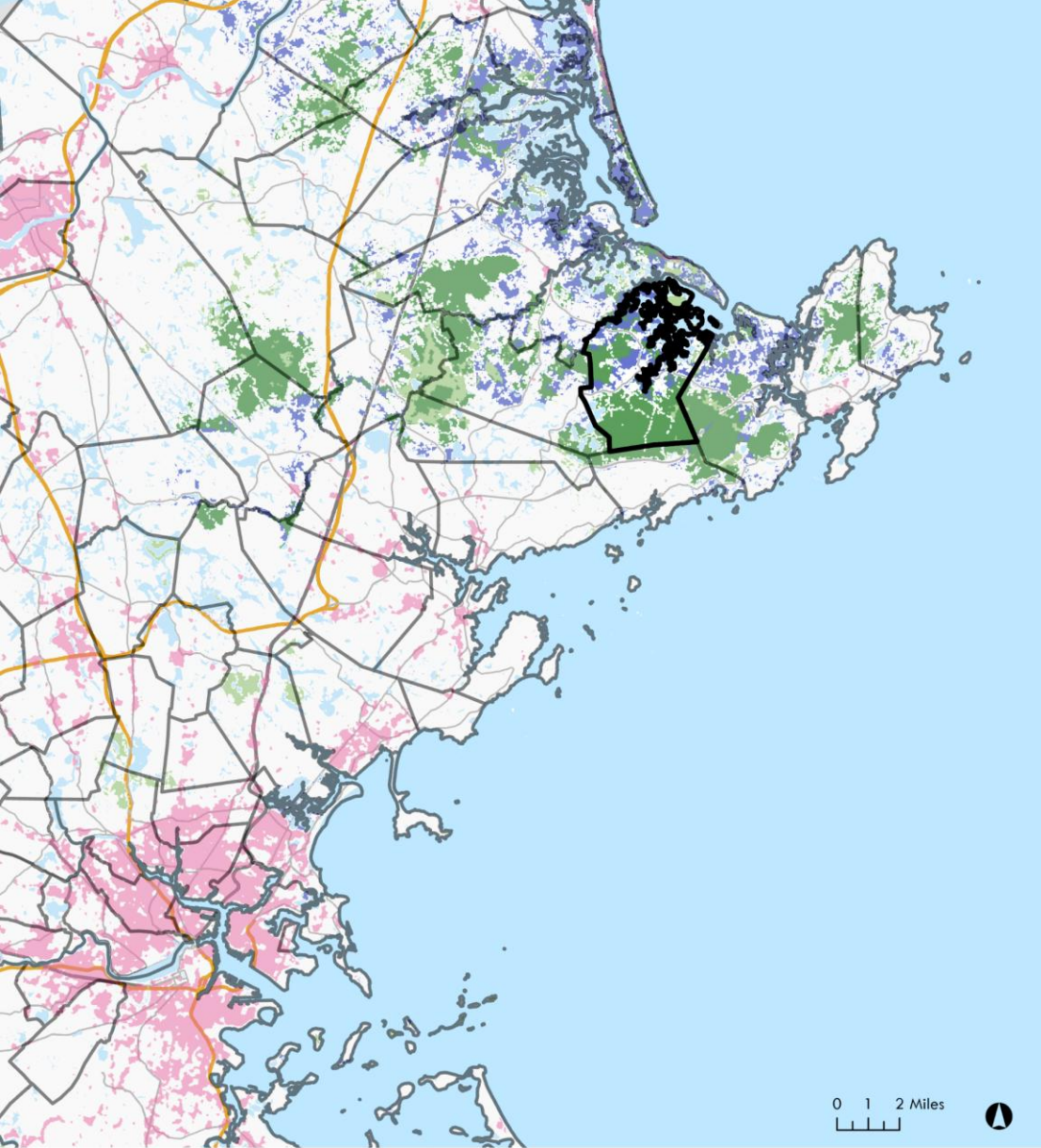
The information depicted on this map is for planning purposes only. It is not adequate for legal boundary definition, regulatory interpretation, or parcel-level analysis.

Produced by:
Metropolitan Area Planning Council (MAPC)
60 Temple Place, Boston, MA 02111 |
617-933-0700

Data sources: MAPC, MassGIS, MassDOT, Town of Essex

APRIL 2026

Open Space Inventory – All



Resilient and Connected Network TNC Customized (Simple)

- High Resilience, High Flow, and Recognized Biodiversity
- High Resilience and High Flow
- High Resilience and Recognized Biodiversity

Average Resilience with Biodiversity and/or High Flow

Tribal lands excluded (pending review)

Regional Heat Hot Spots

- Regional Heat Hot Spots

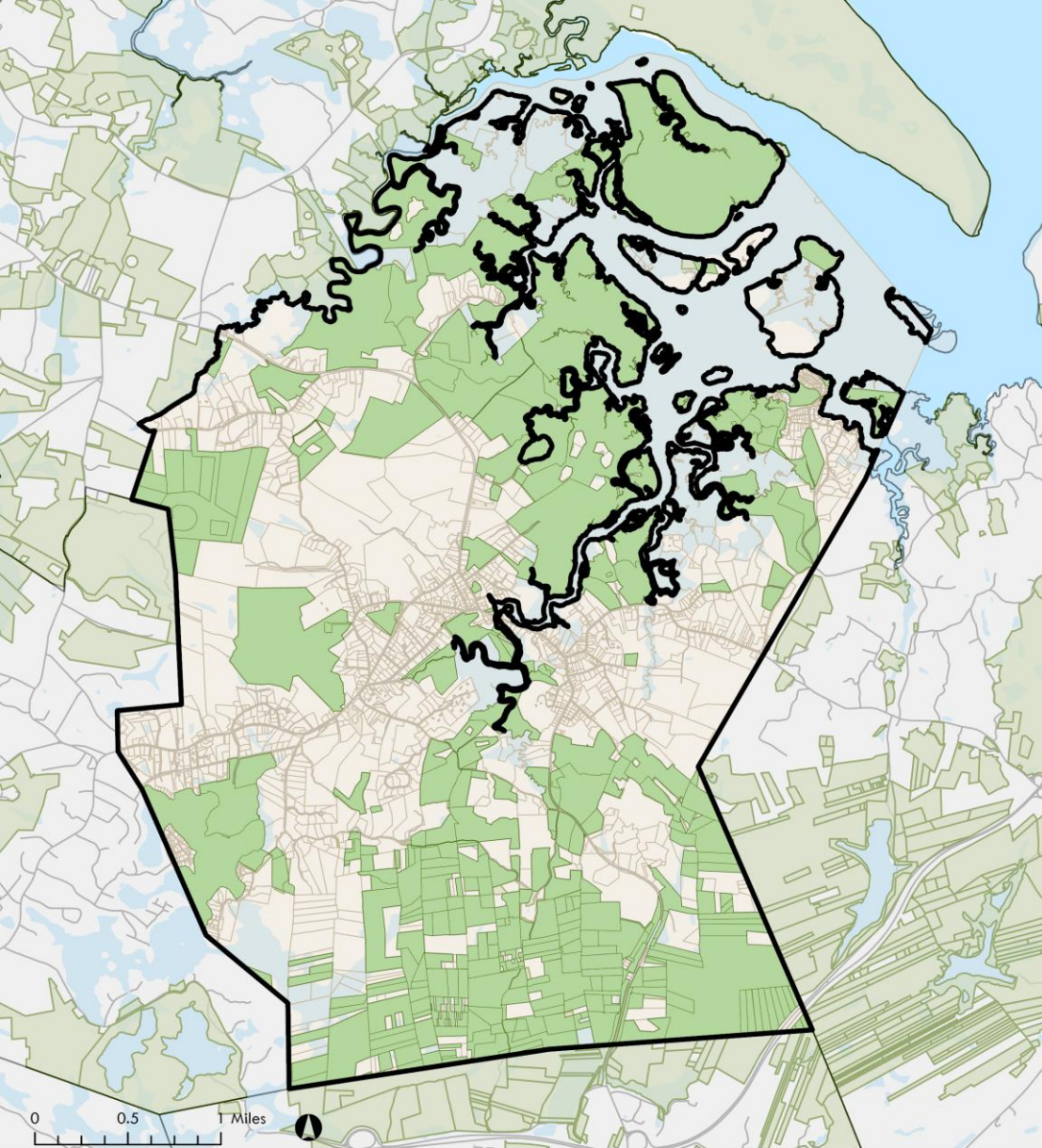
The information depicted on this map is for planning purposes only. It is not adequate for legal boundary definition, regulatory interpretation, or parcel-level analysis.

Produced by:
Metropolitan Area Planning Council (MAPC)
60 Temple Place, Boston, MA 02111 |
617-933-0700

Data sources: MAPC, MassGIS, MassDOT, Town of Essex

APRIL 2026

Open Space Inventory – All



Essex Open Space Inventory 2026

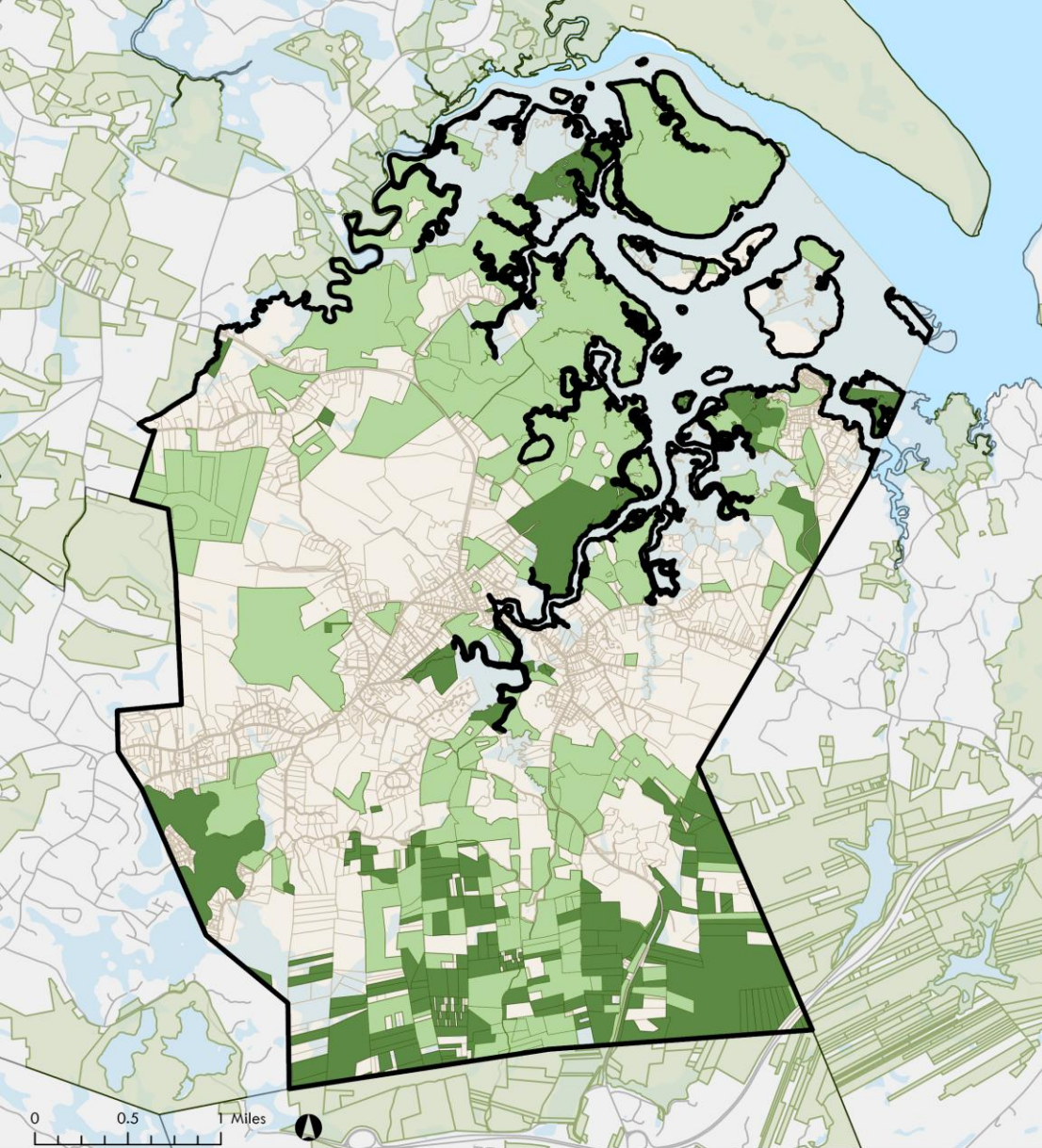
The information depicted on this map is for planning purposes only. It is not adequate for legal boundary definition, regulatory interpretation, or parcel-level analysis.

*Produced by:
Metropolitan Area Planning Council (MAPC)
60 Temple Place, Boston, MA 02111 |
617-933-0700*

Data sources: MAPC, MassGIS, MassDOT, Town of Essex

APRIL 2026

Open Space Inventory – Comparison to old layer



Open Space Inventory Pre 2026 Essex Open Space Inventory 2026

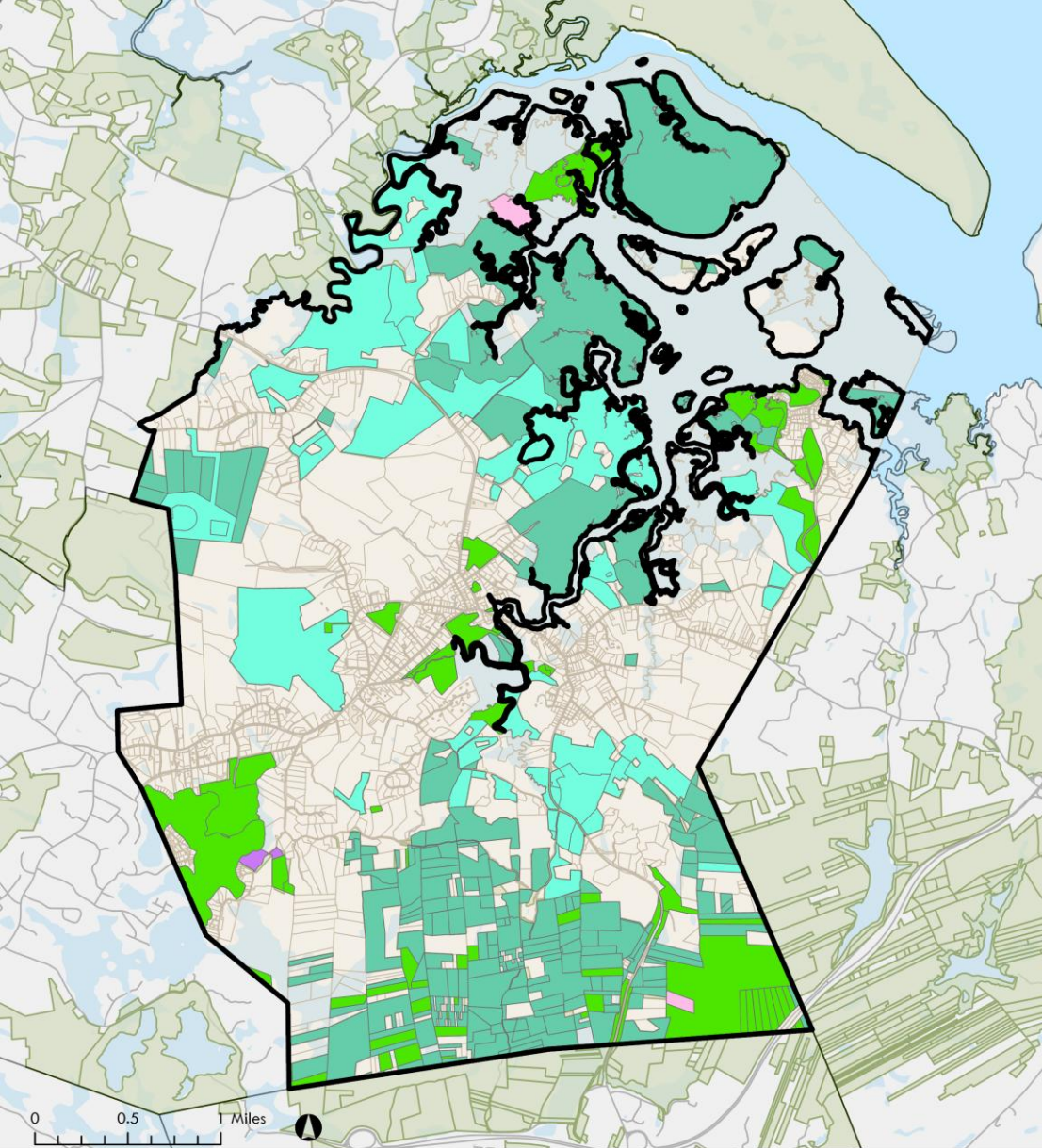
The information depicted on this map is for planning purposes only. It is not adequate for legal boundary definition, regulatory interpretation, or parcel-level analysis.

*Produced by:
Metropolitan Area Planning Council (MAPC)
60 Temple Place, Boston, MA 02111 |
617-933-0700*

Data sources: MAPC, MassGIS, MassDOT, Town of Essex

APRIL 2026

Open Space Inventory – by Owner Type



Open space in Essex by owner type

- Nonprofit land trust
- Municipal
- Other nonprofit
- Private
- State

Open space in neighboring towns

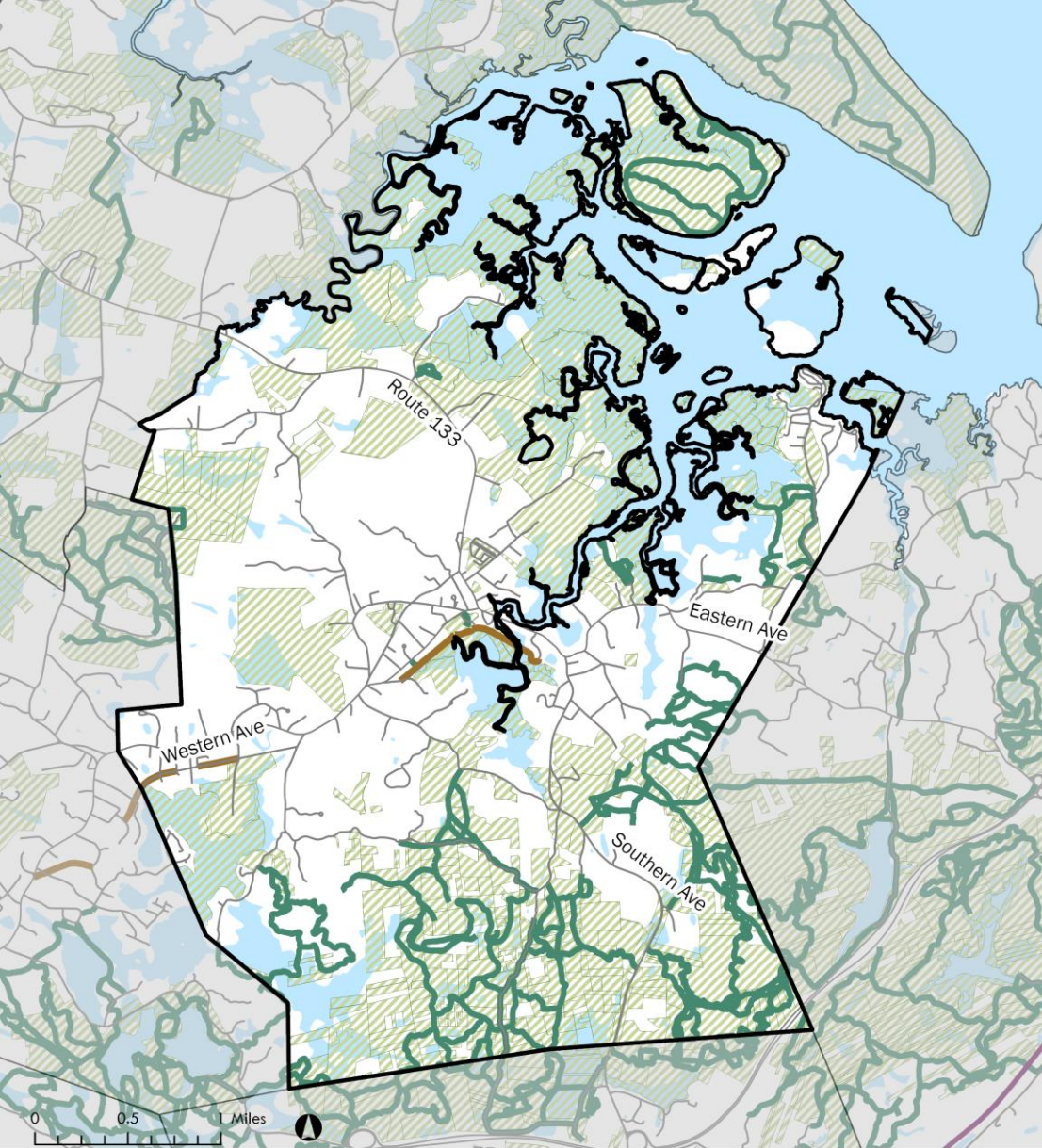
The information depicted on this map is for planning purposes only. It is not adequate for legal boundary definition, regulatory interpretation, or parcel-level analysis.

Produced by:
Metropolitan Area Planning Council (MAPC)
60 Temple Place, Boston, MA 02111 |
617-933-0700

Data sources: MAPC, MassGIS, MassDOT, Town of Essex

APRIL 2026

Trail Map



- Bike Facilities
- Shared Use Paths
- Walking Trails
- Open Space

The information depicted on this map is for planning purposes only. It is not adequate for legal boundary definition, regulatory interpretation, or parcel-level analysis.

Produced by:
Metropolitan Area Planning Council (MAPC)
60 Temple Place, Boston, MA 02111 | 617-933-0700

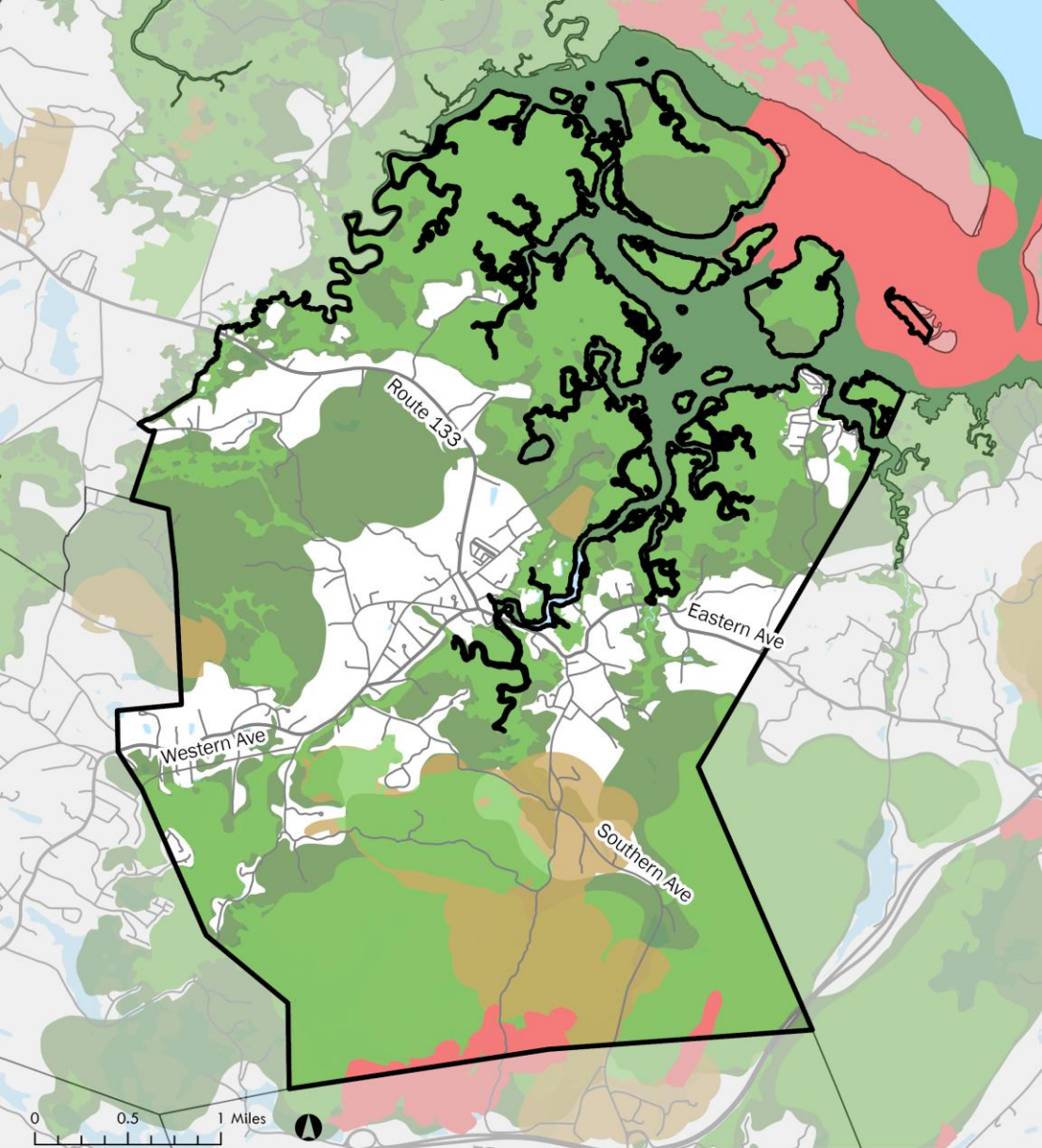
Data sources: MAPC, MassGIS, MassDOT, Town of Essex

APRIL 2026

BioMap

Namely, 46% of Essex is considered **Core Habitat**. Core Habitat represents areas that are critical for the long-term persistence of rare species, exemplary natural communities, and resilient ecosystems.

Furthermore, 78% of Essex is considered **Critical Natural Landscape**. Critical Natural Landscape represents both large landscape areas that are minimally impacted by development and buffer areas to core habitats and coastal areas. Critical Natural Landscapes provide habitat for native species, support intact ecological processes, maintain connectivity among habitats, and enhance ecological resilience.



- BioMap 3 Selected Features**
- BioMap 3 Rare Regional Species
 - BioMap 3 Rare Local Species
 - BioMap 3 Core Habitat
 - BioMap 3 Critical Natural Landscape

The information depicted on this map is for planning purposes only. It is not adequate for legal boundary definition, regulatory interpretation, or parcel-level analysis.

Produced by:
Metropolitan Area Planning Council (MAPC)
60 Temple Place, Boston, MA 02111 | 617-933-0700

Data sources: MAPC, MassGIS, MassDOT, Town of Essex

APRIL 2026



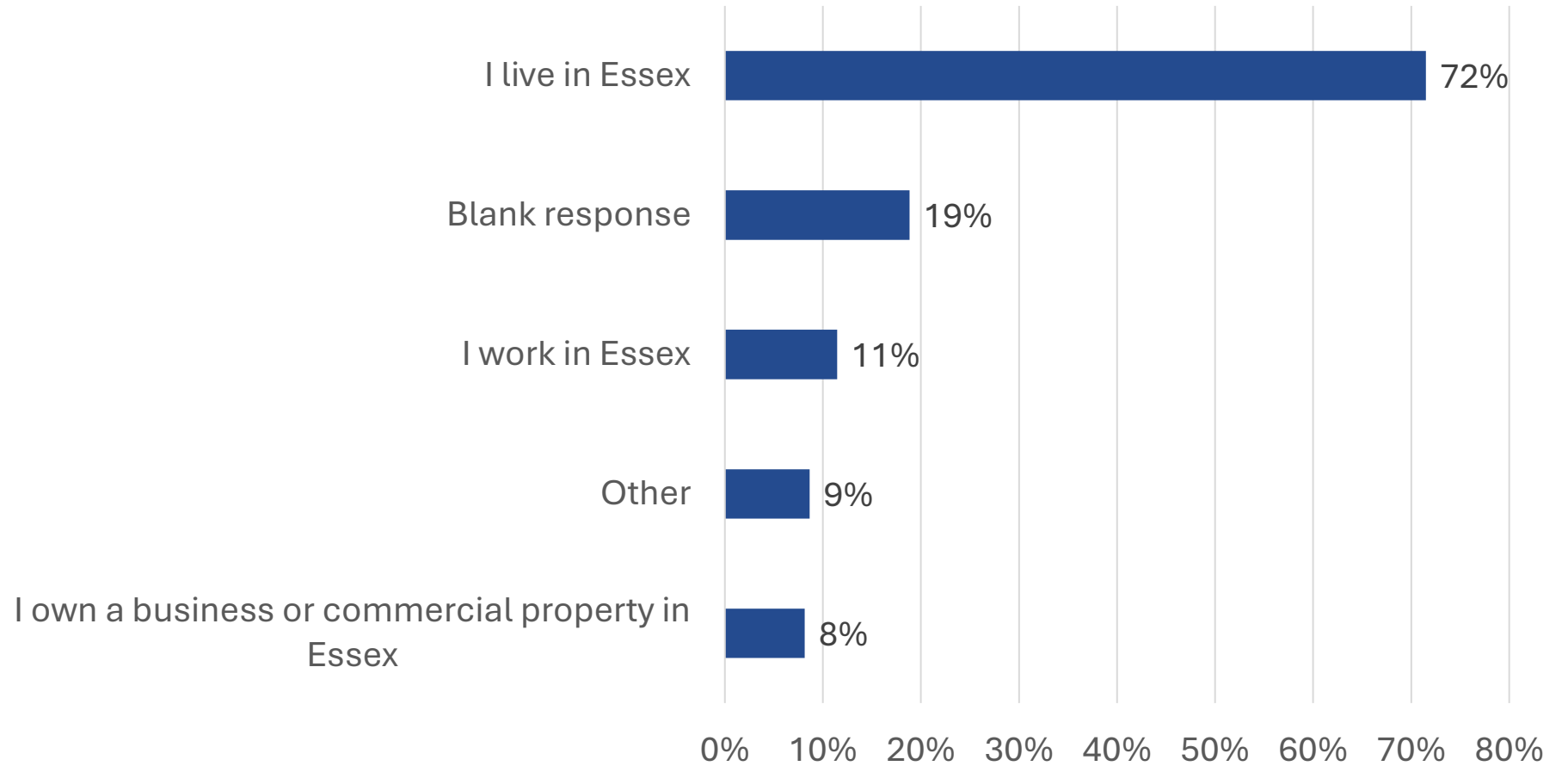
Appendix. Detailed Survey Results

Survey Responses

- Survey available from Oct 20 – Dec 19
- 488 people engaged with the survey
 - 6 hard copy submissions + 482 online submissions
- Sample cleaning:
 - Checked for duplicate IP addresses
 - Removed submissions that were completely blank (95)
 - **Final sample: n = 393**
- This represents ~ 10% of current Essex population (3,680 people)

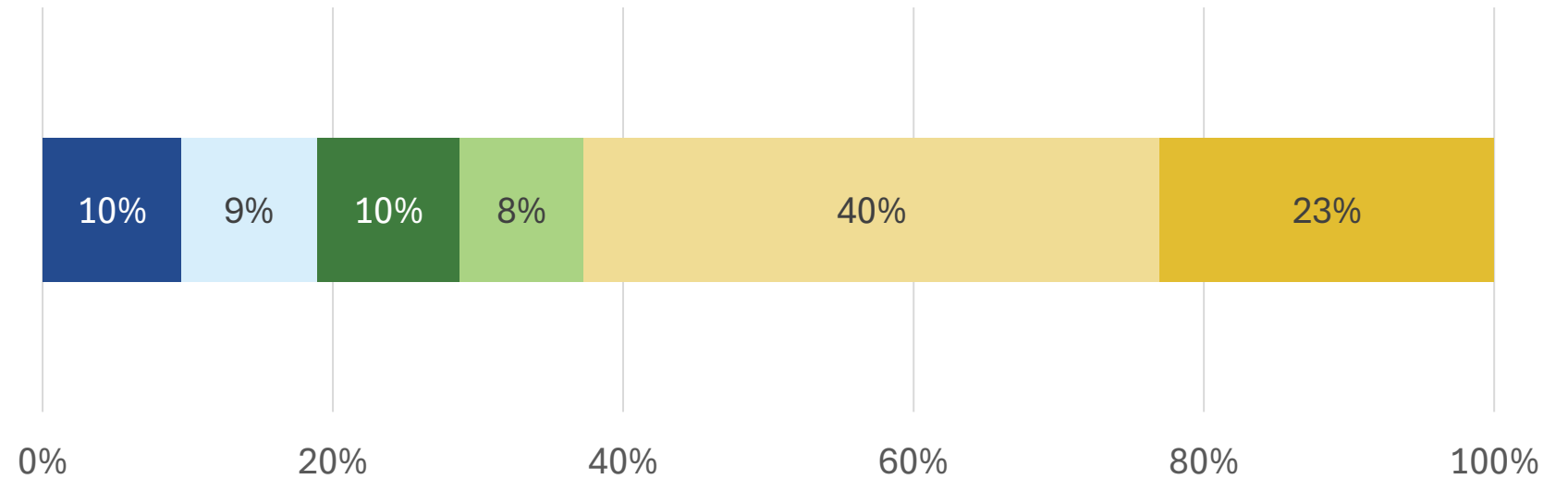
Participant Demographics

What is your connection to Essex? Select all that apply



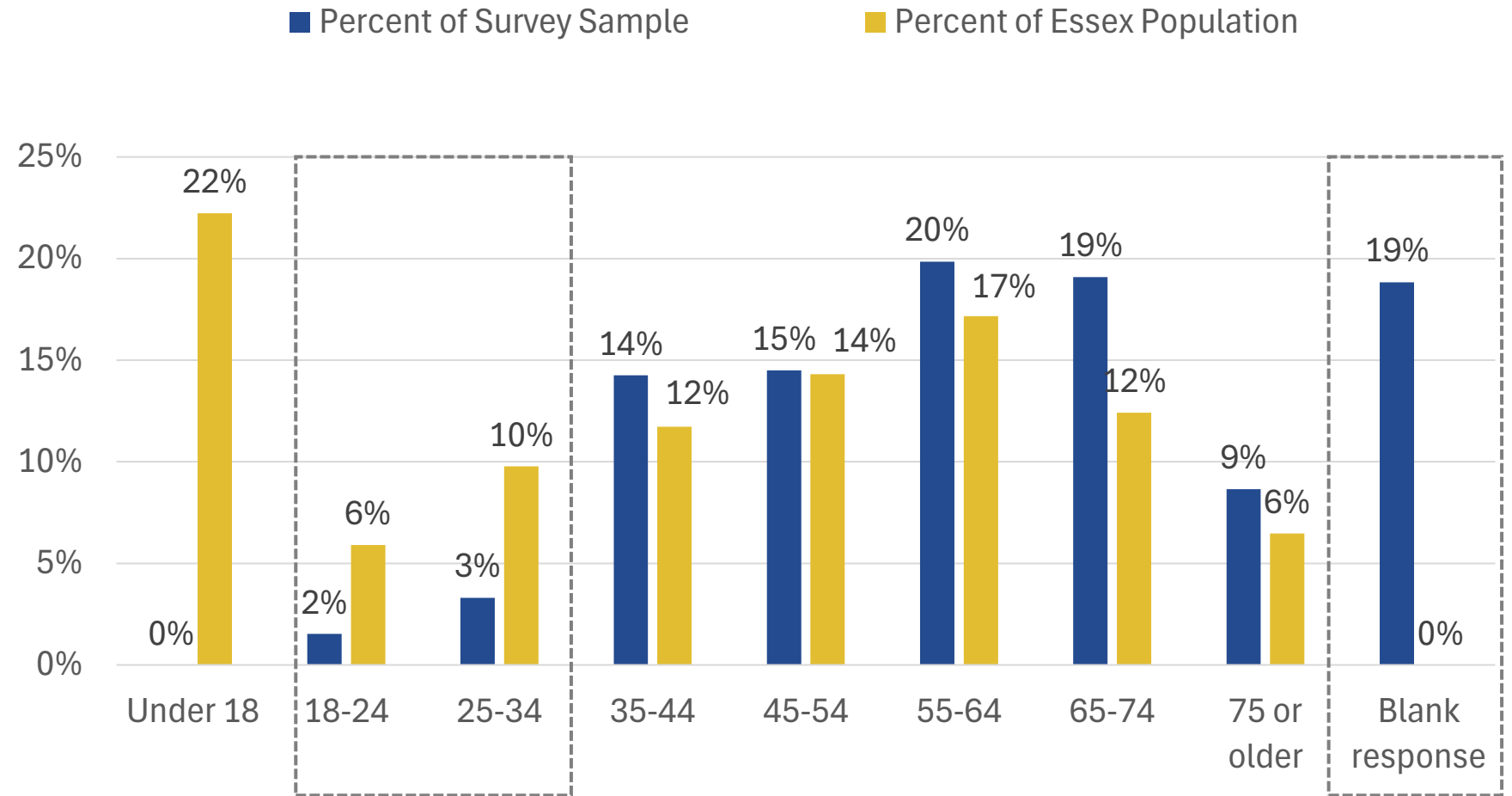
Note: Respondents could select more than one response.

How long have you lived in Essex? (Percent of resident survey responses only)



- Less than 5 years
- 6-10 years
- 11-15 years
- 16-20 years
- 21+ years
- Prefer not to answer / No response

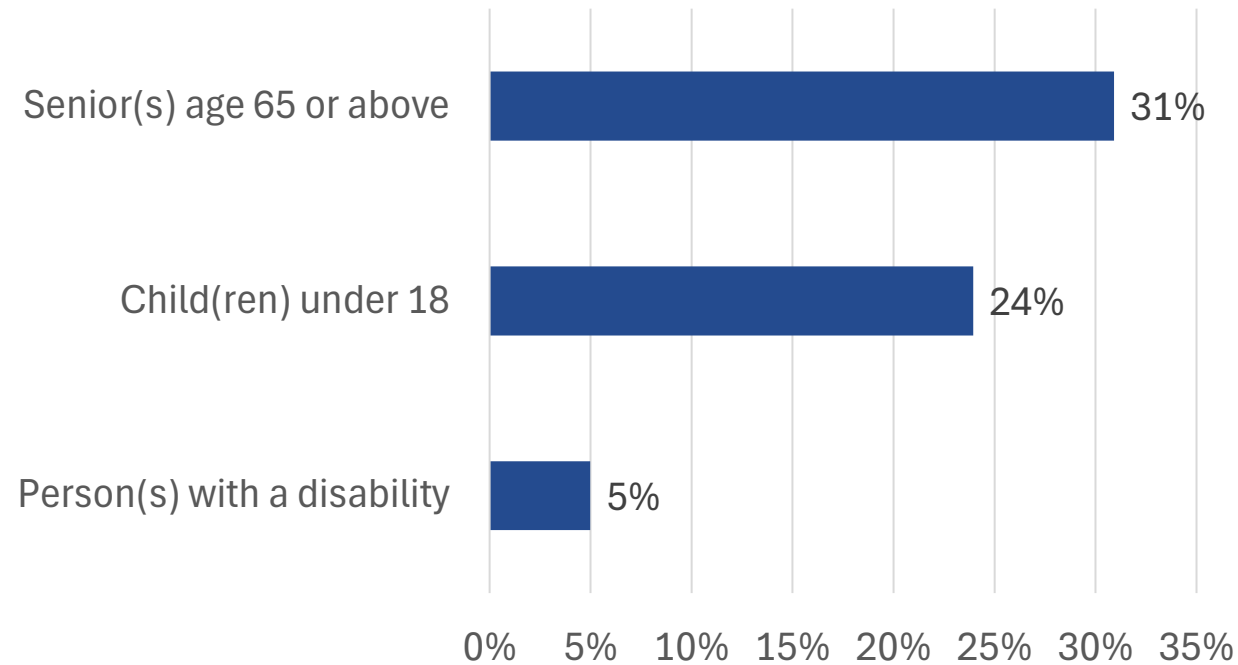
How old are you?



Source: ACS 5-year estimates, 2019-2023

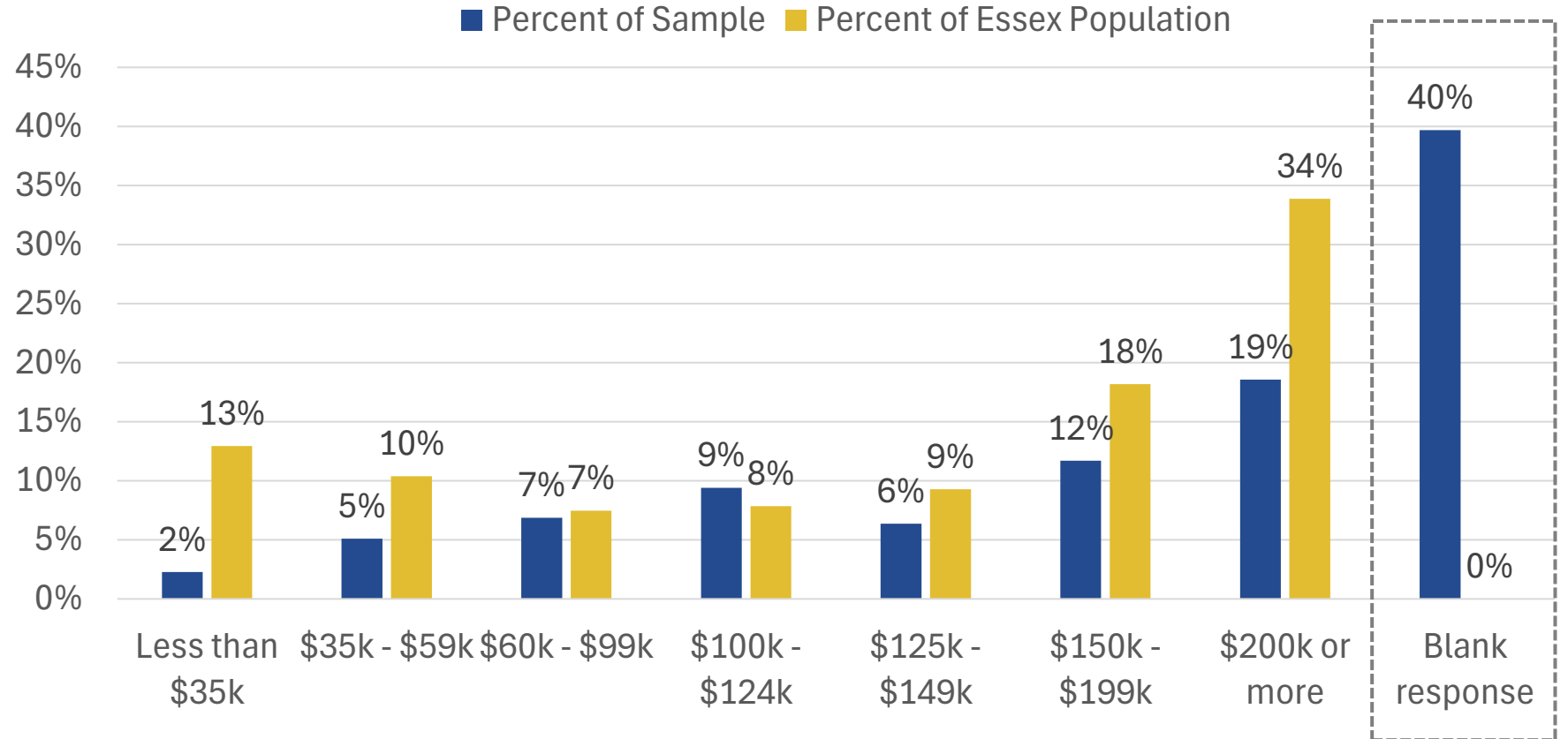
Do you or any members of your household match the following descriptions? Check all that apply.

Percent of Survey Respondents



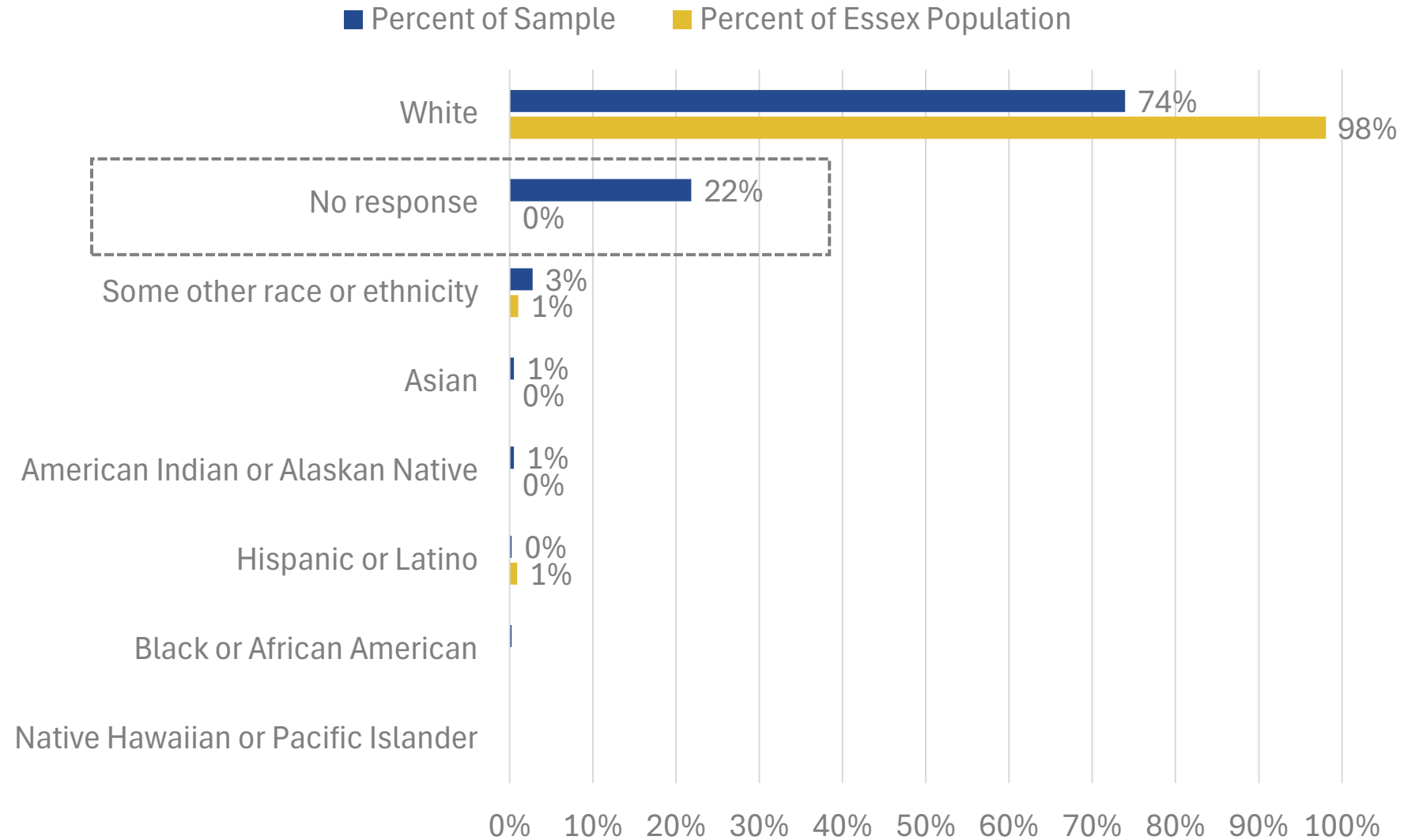
- ➔ 27% of Essex households include seniors
- ➔ 38% of Essex households have children under 18
- ➔ 12% of Essex residents

What is your annual household income?

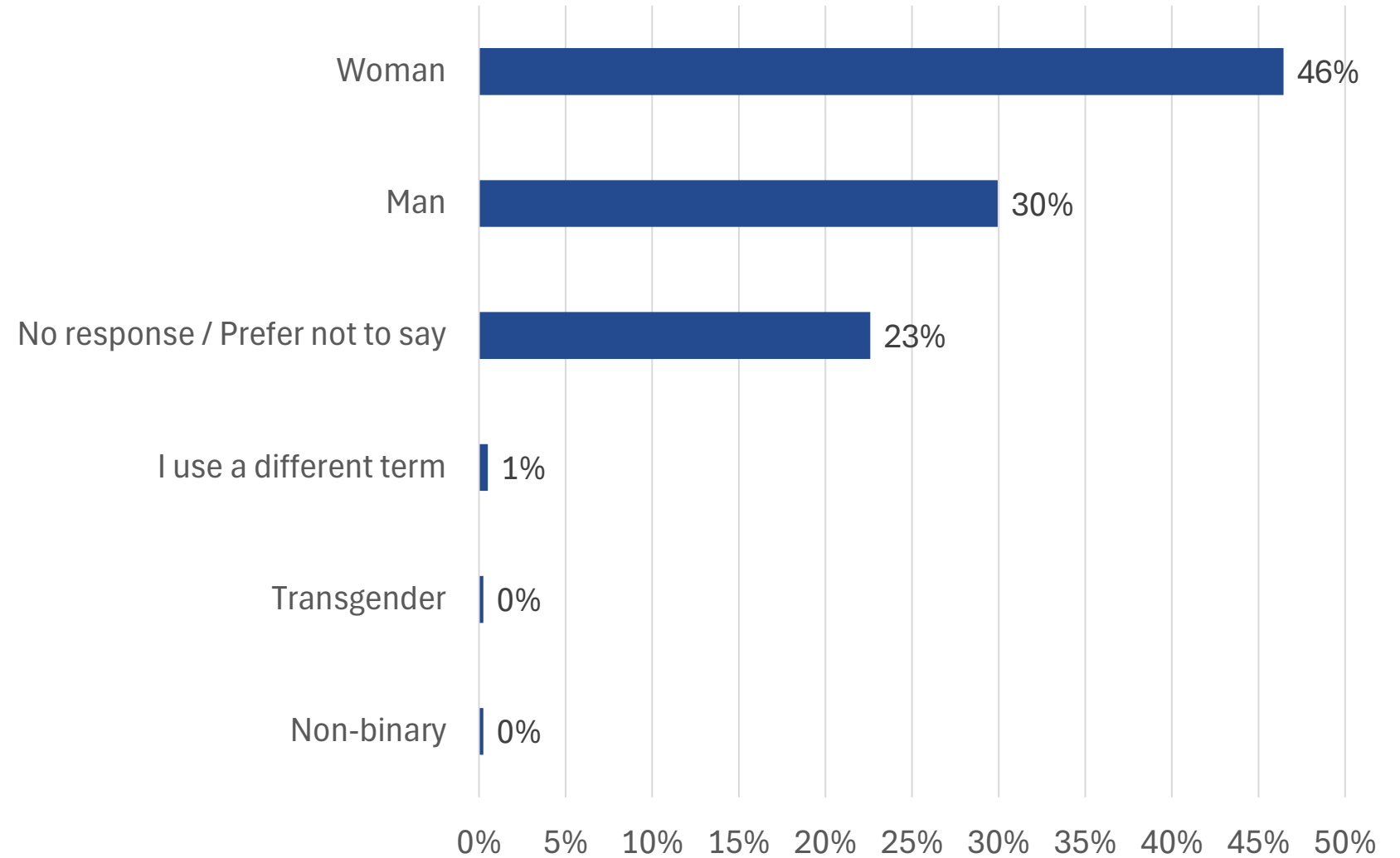


Source: ACS 5-year estimates, 2019-2023

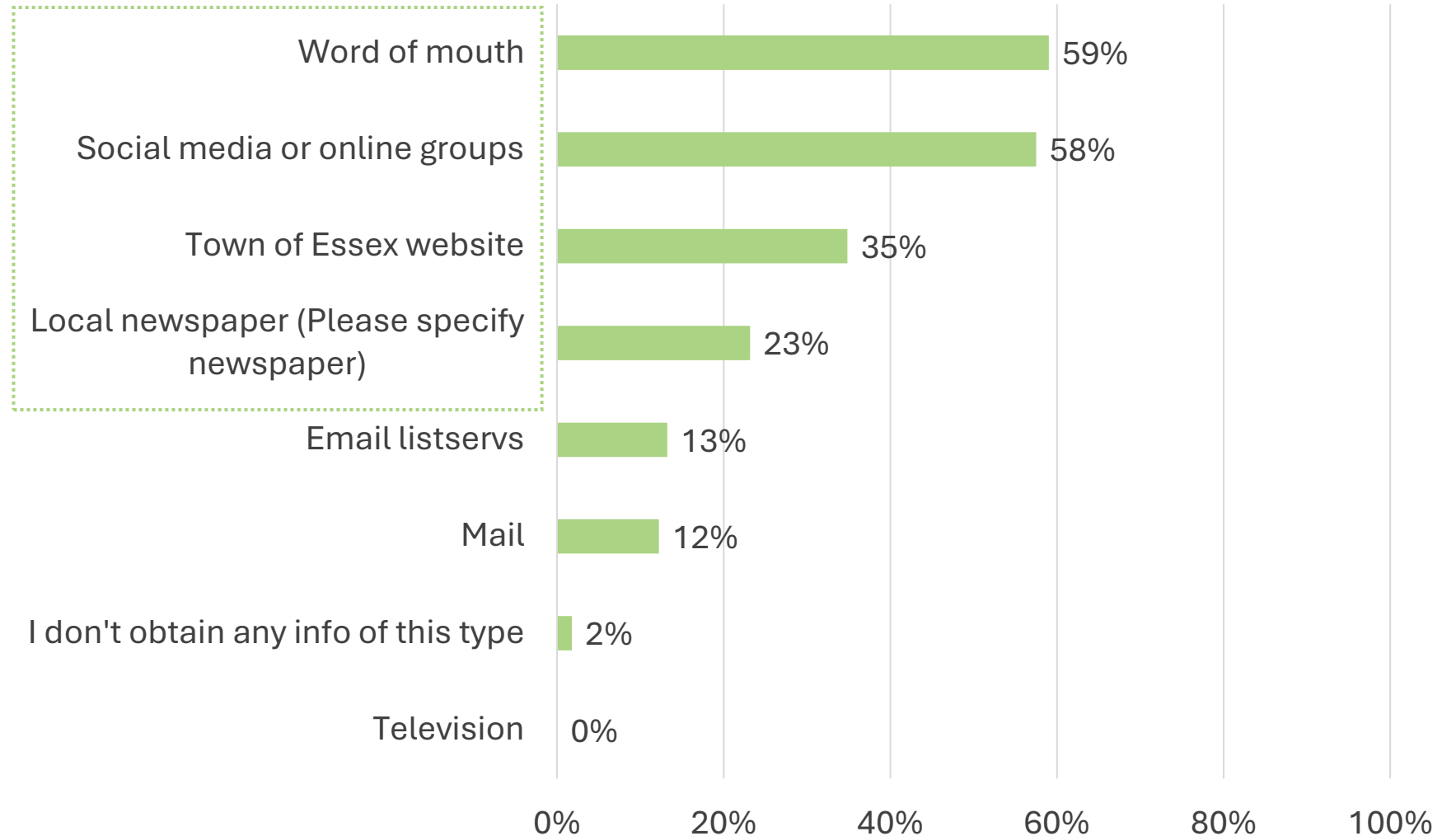
What is your racial-ethnic identity?



How do you describe your gender identity? Select all that apply



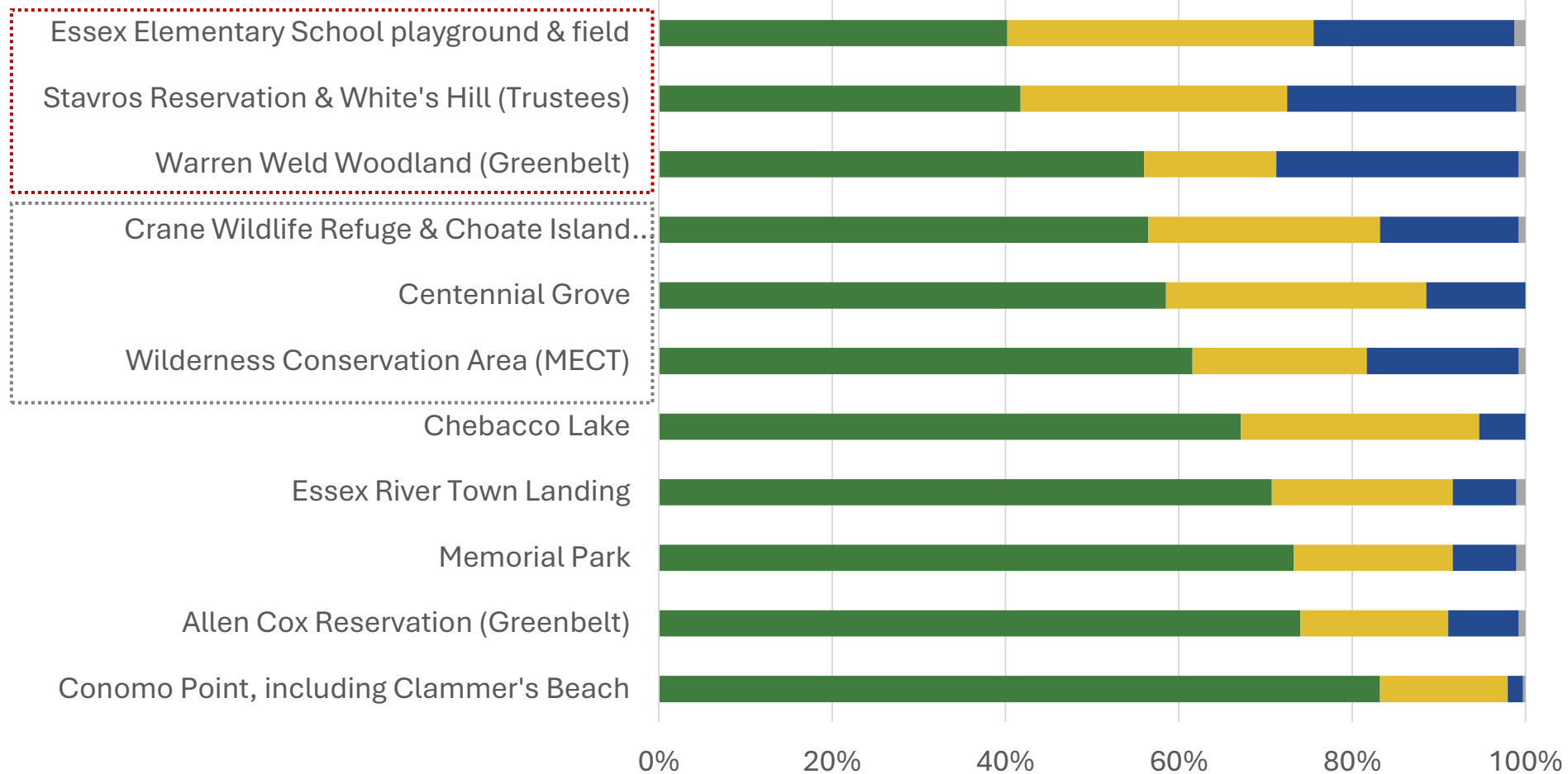
How do you currently obtain information about news, events, and activities in Essex? Check all that apply.



Existing use of open space; Barriers & needed improvements

How often do you visit or use the following open space and recreation areas?

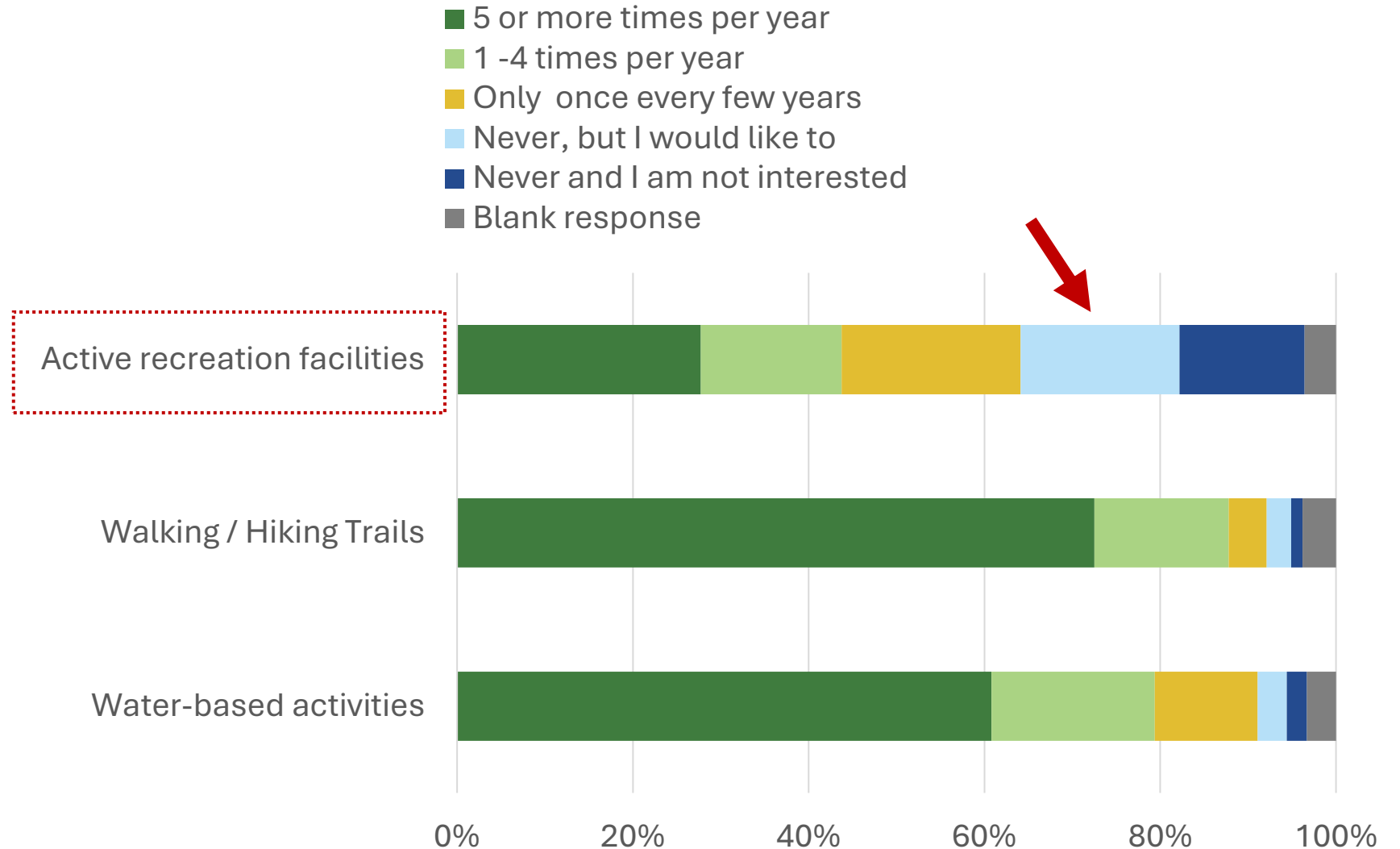
- Once or more times per year
- Once every few years
- I've never been or I'm unaware of this area
- Blank response



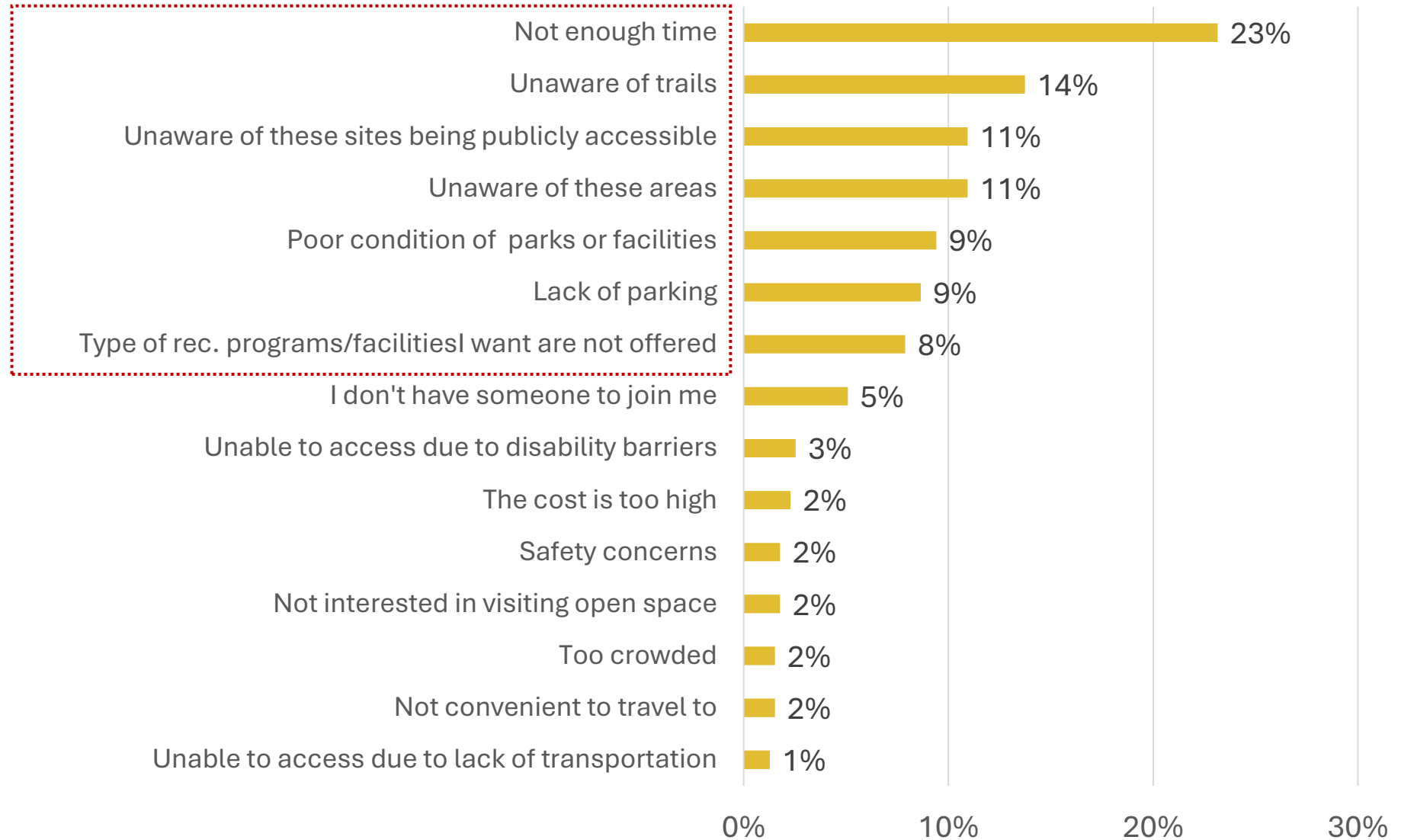
Are there any other places in Essex where you engage in outdoor recreation?

- Cogswell Grant
- Cape Ann Golf Course
- Other sites outside Essex

How often do you or your household partake in, or use, the following activities in Essex?



What prevents you from visiting the open space and recreation areas listed in the previous questions? Check all that apply



What prevents you from visiting the open space and recreation areas listed in the previous questions? (Text response n = 51)

- **Tennis courts** in disrepair
- **Chebacco Lake & Centennial Grove** in disrepair, inaccessible to residents, or difficult to access due to lack of parking
- **Lack of awareness**; lack of promotion & communication about what is available to the public
- Some places don't allow **dogs**
- Lack of **bike access** for youth & kids
- Lack of **bathrooms** at Conomo Point
- Note that several respondents (20+) said **they face few to no barriers** to visiting open spaces in Essex, other than lack of time, or desire for variety

Please provide your input on how open space and recreation areas could be improved and/or made easier to use and access. Please be as specific as possible. (Text responses, n = 188)

- **Renovating tennis courts** at Memorial Park
- **Adding pickleball courts**; suggestion to add them to Memorial Park or Centennial Grove.
- **Other field sports are also missing**, especially **soccer**.
- **Improving playgrounds**: Memorial Park playground is the only one in Town, and has issues with fencing, light, equipment; suggestions for splash pad and equipment for toddlers.
- **Recreational programming and events** for youth and for seniors in particular
- **Improving access to the water and waterfronts**: Boat access to the river including for kayaks, paddleboards; **beach access** including at **Conomo Point**; and lake access at Chebacco Lake.
- Generally improving access and amenities at **Centennial Grove & Chebacco Lake**
- **Lack of parking**, specifically mentioned for Conomo Point, town landing

Please provide your input on how open space and recreation areas could be improved and/or made easier to use and access. Please be as specific as possible. (Text responses, n = 188)

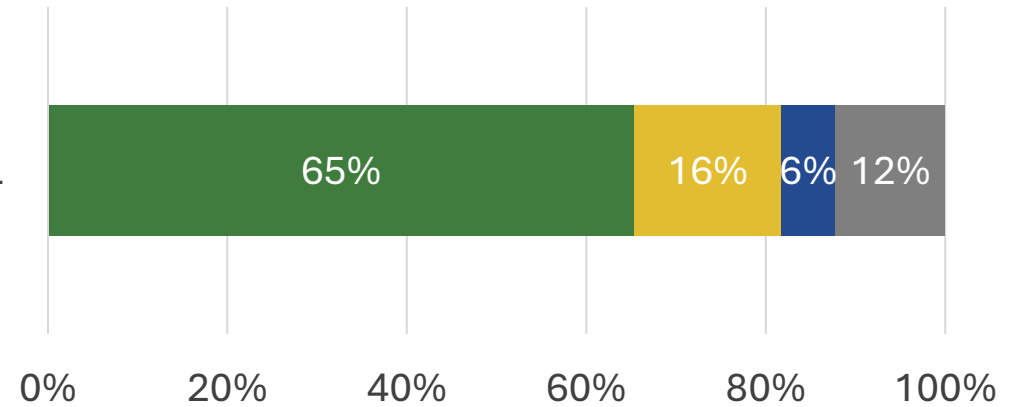
- **Trail upkeep:** Adding clearer signage, better trail markings, and maps at trailheads
- Improving **sidewalks and lighting on Main Street;** better use of **new pocket park**
- **Improving bike access,** including off-road trails; need for a safe connection along Southern Avenue to Manchester.
- Natural preservation of existing open spaces, keeping the “**pristine**” nature of Essex
- Need to protect and preserve **water quality** (watershed, Chebacco Lake, Alewife Brook, Great Marsh)

Prioritization of goals and strategies

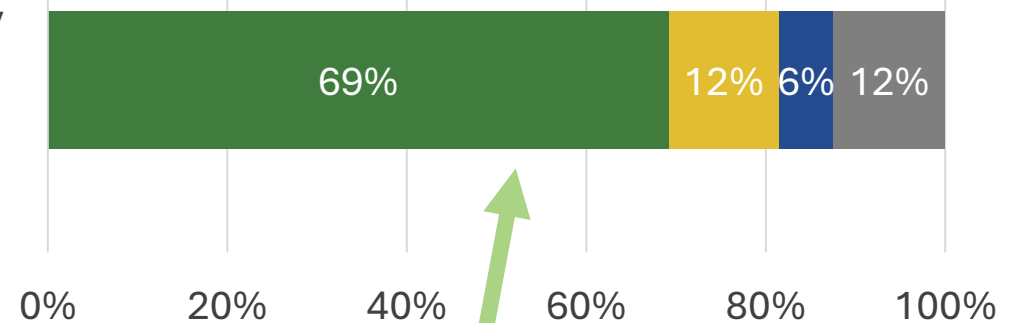
Please indicate whether you agree or disagree with the following statements

■ Strongly Agree / Agree ■ Neutral ■ Disagree / Strongly Disagree ■ No Response

Existing open spaces in Essex are effectively protecting the most critical natural resources of the town.



Essex should do more to proactively preserve and conserve additional natural resources in the town.

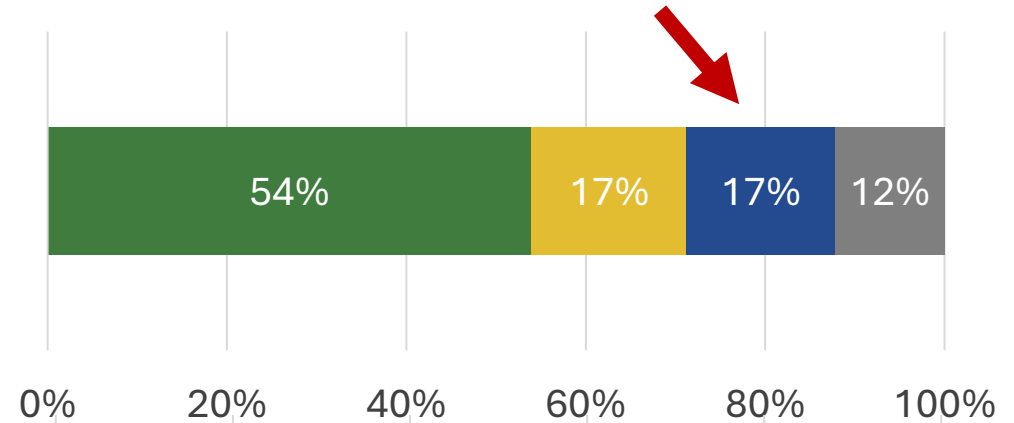


Largest share of Strongly Agree + Agree within this section of the survey

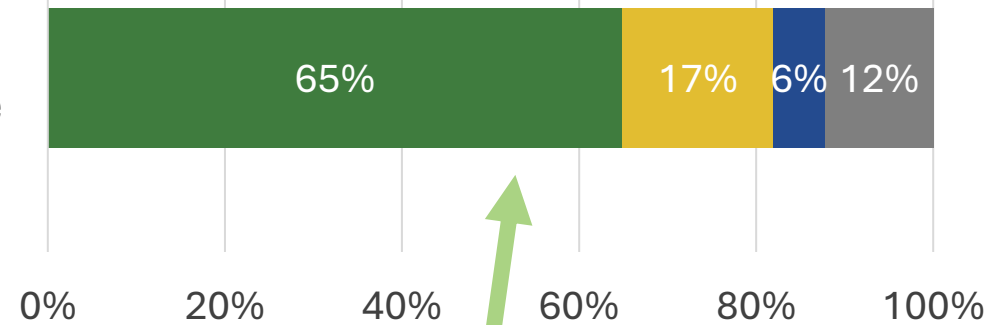
Please indicate whether you agree or disagree with the following statements

Strongly Agree / Agree Neutral Disagree / Strongly Disagree No Response

Existing parks and recreational sites in Essex are meeting my and my household's recreation needs.



Essex should do more to expand recreational amenities and programming to meet the needs of the community as a whole.



Please rate the importance of the following statements

 **Environmental Protection**

 **Recreation Facilities and Programming**

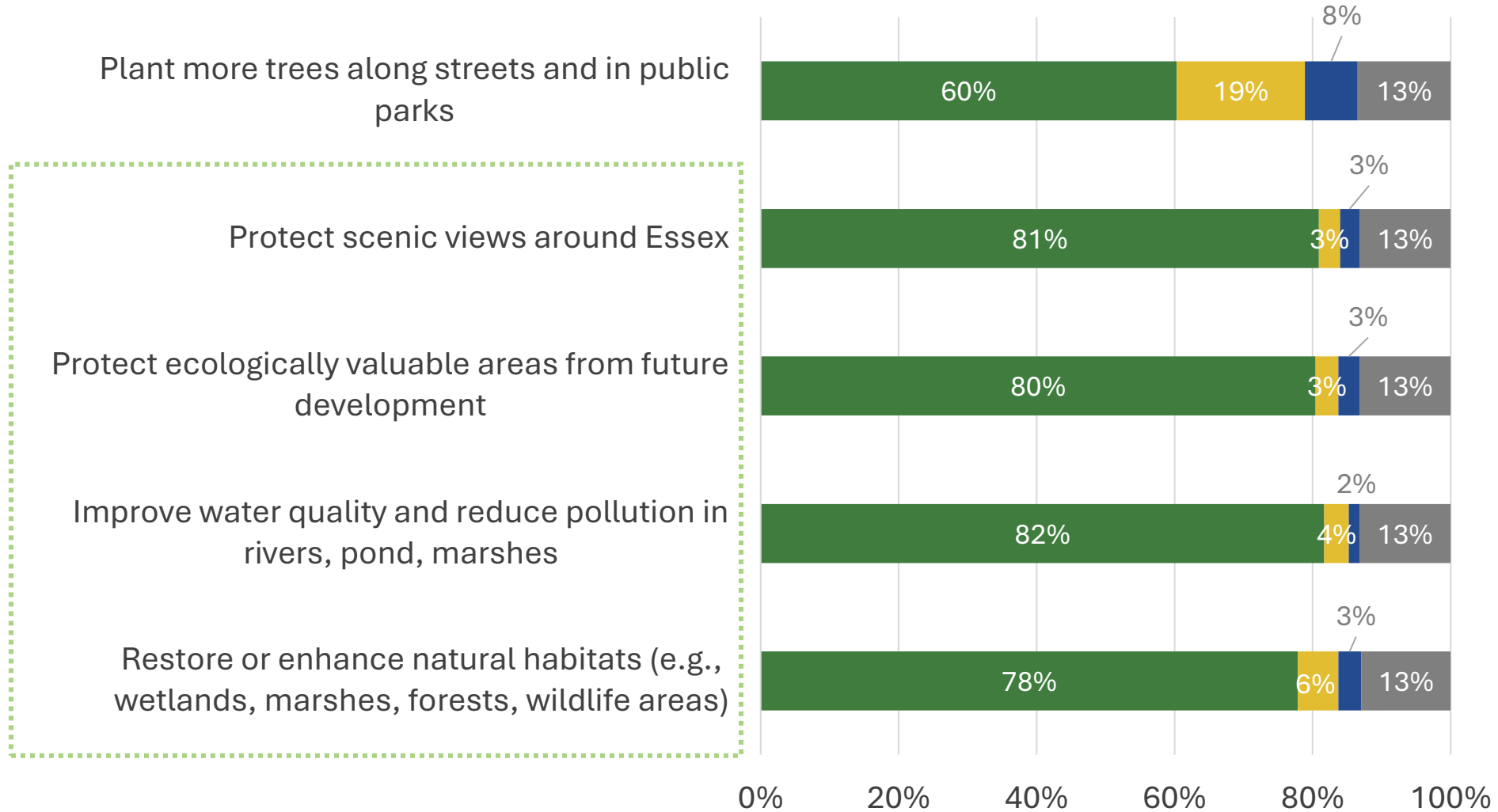
 **Access and Connectivity**

 **Communication and Education**

 **Long-term Maintenance & Acquisition**

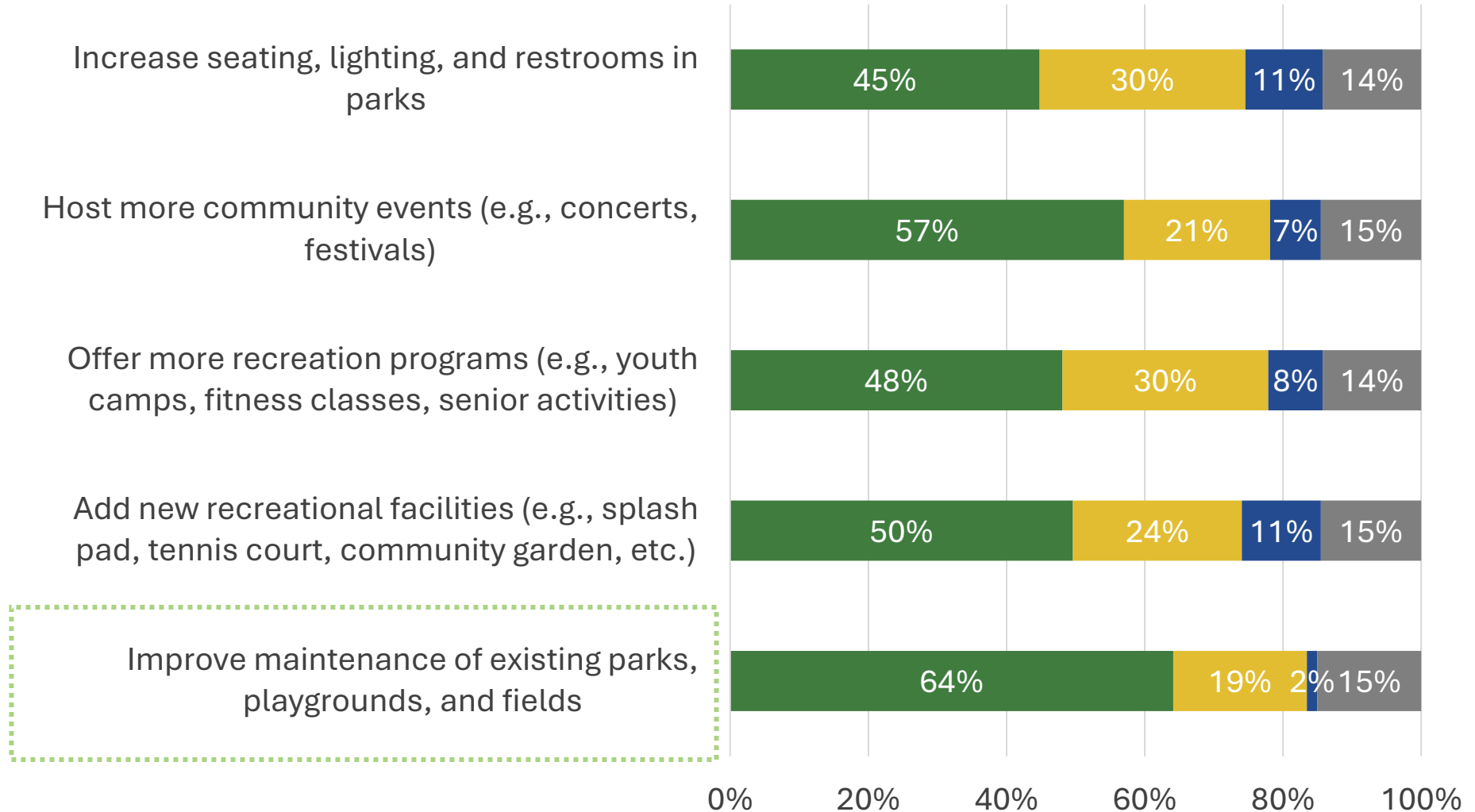
 Environmental Protection

■ Very Important / Important
 ■ Neutral
 ■ Less Important / Not Important
 ■ No Response



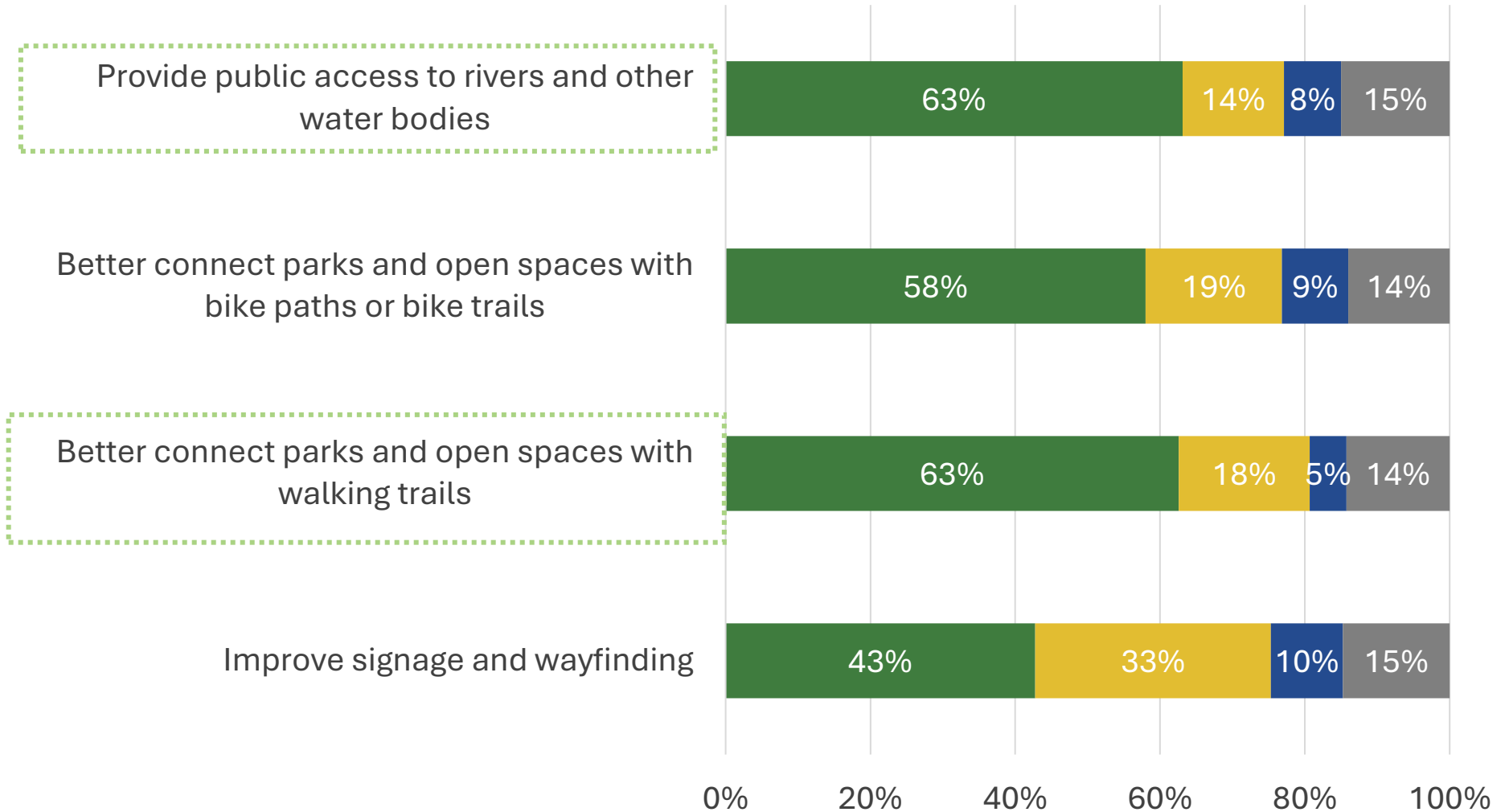
Recreation Facilities and Programming

■ Very Important / Important ■ Neutral ■ Less Important / Not Important ■ No Response



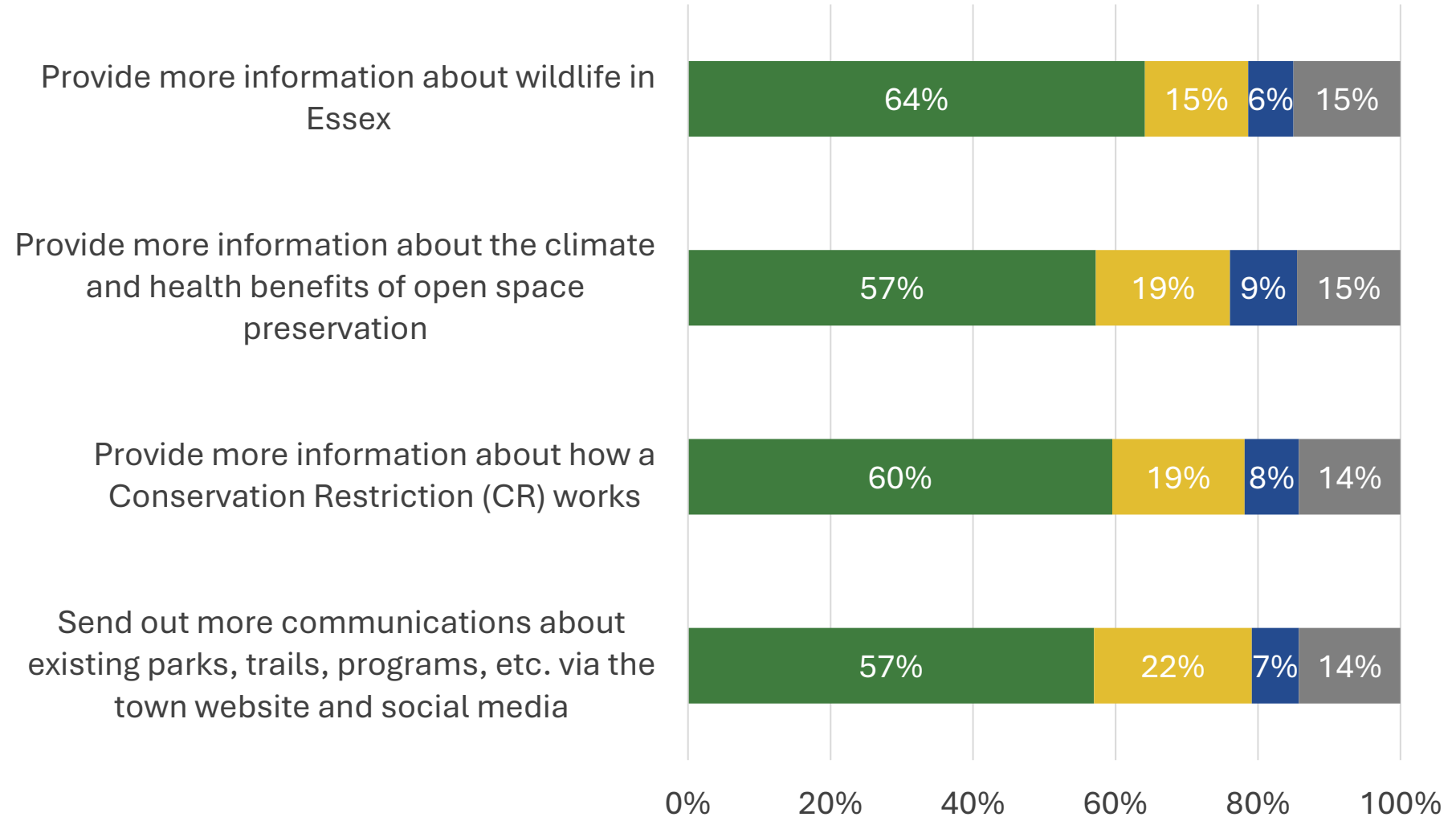
Access and Connectivity

■ Very Important / Important ■ Neutral ■ Less Important / Not Important ■ No Response

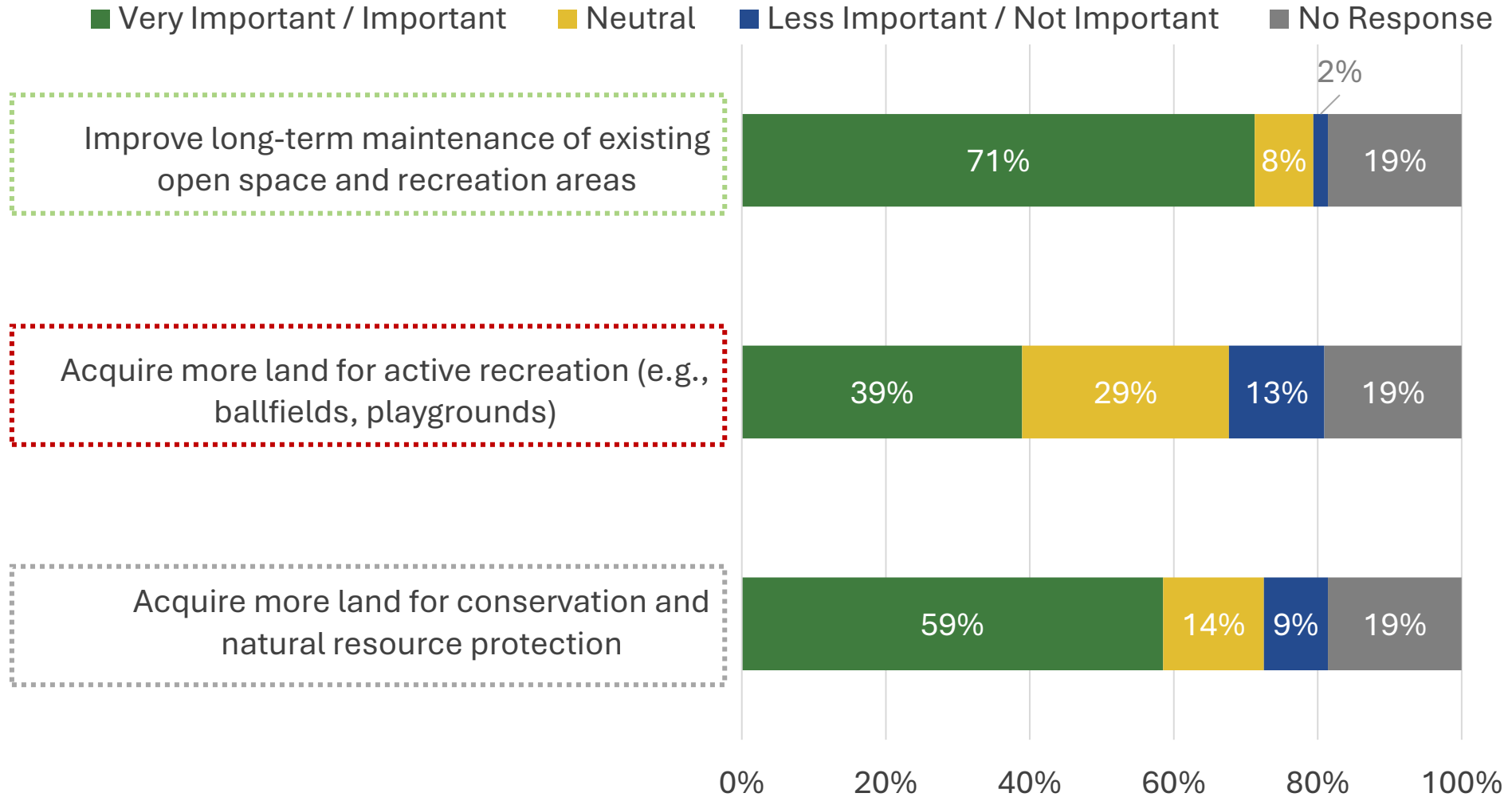


Communication and Education

■ Very Important / Important ■ Neutral ■ Less Important / Not Important ■ No Response



Long-term Maintenance & Acquisition



Parcels for permanent protection

Are there any parcels you think the Town should investigate permanently protecting for conservation or recreation purposes?
(Text responses, n = 80)

- **Great Marsh** and **wetlands**
- **Route 133** and surrounding parcels and **farmland**
- **Wooded lots** near Southern Ave & MECT area
- **30 Apple Street**
- **Conomo Point** -- return the land to open space for all residents
- Chebacco Lake and surrounding watershed; former **Camp Menorah** property on Wood Drive

*“This is a complex question as the **town also greatly needs more affordable housing which will almost certainly impact certain areas** that might otherwise be classified as protected open space”*

*“No, Essex is adequately and beautifully protected as-is. **Essex needs more housing, development, businesses, and tourism to become more economically stable** and maintain or improve the quality of education and other services in the town.”*

*“The Town of Essex should be selective in permanently protecting any parcels of land for conservation or recreational purposes. **Based on the amount of land protected now the town can't afford much more loss of tax revenue.**”*