

Accelerating Climate Resilience Municipal Grant Program Webinar

April 27, 2026



Meet the Team!



Van Du
Director of
Environmental
Planning



**Francelis
Morillo Suarez**
Clean Energy and
Climate Planner II



Kat Kobylt
Senior
Environmental
Planner



Milan Chuttani
Clean Energy
Planner II

Webinar Agenda:

- ❖ Program Overview and Priorities
- ❖ Grant Types and Timeline
- ❖ Resources and Project Examples
- ❖ Q&A

Program Overview

Accelerate climate resilience in the region by helping municipalities and community partners advance strategies that protect people, places, and communities from the impacts of climate change

- ✓ Deploy actionable interventions through local projects, policies, and strategies.
- ✓ Facilitate long-term changes and readiness for climate change impacts.
- ✓ Advance climate equity, regional coordination, and social cohesion.



ACR Program Priority Areas



Nature-based solutions for climate resilience



Contributions to social resiliency or cohesion



Innovative financing or infrastructure investment models



Municipal climate resiliency policy



Combined mitigation and adaptation strategies



Capacity building through coalitions or convenings



Local food systems or agricultural resiliency measures



District-scale climate resiliency pilots



Public outreach, marketing, artistic, cultural projects to advance knowledge & action

Examples of Climate Action

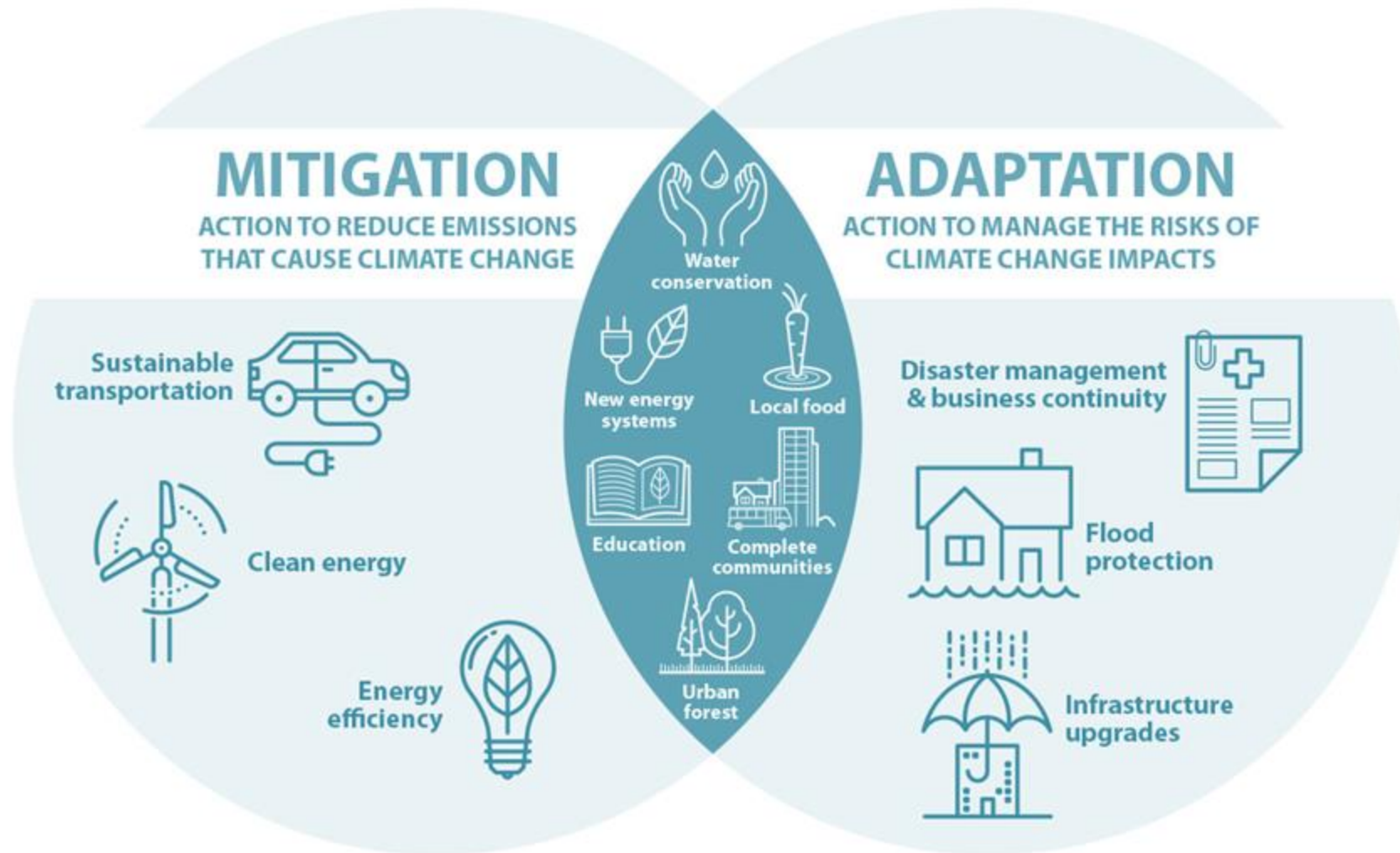
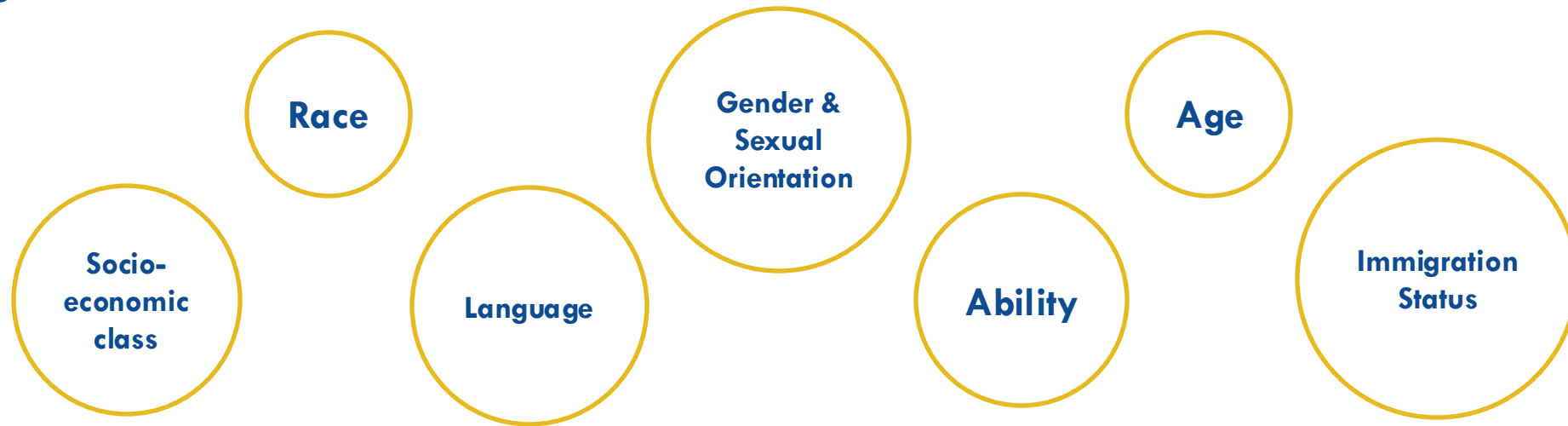


Image credit: City of Calgary (CAN) Climate Change Program

Equity and Climate Resilience

Not everyone is affected equally by climate change. Existing social factors and inequities shape how people experience climate impacts and climate adaptation strategies.



MAPC seeks to elevate projects that will advance climate equity, regional coordination, and social cohesion particularly for populations or neighborhoods most vulnerable to climate change.

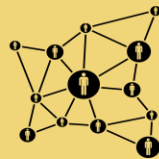
Centering Equity in Your Projects

For each project, consider:

Who has been historically impacted by this issue?



Who will be most impacted by the types of changes to our climate we expect to see?



How will the benefits of this strategy be distributed? And any harms?



Whose voices need more representation in decision making on this strategy?



Tools & Resources

Climate Resilience Playbook



Climate Resilience Playbook

Implementation Guidance and Resources for Massachusetts Municipalities

MAPC's Climate Vulnerability Index for Metro Boston

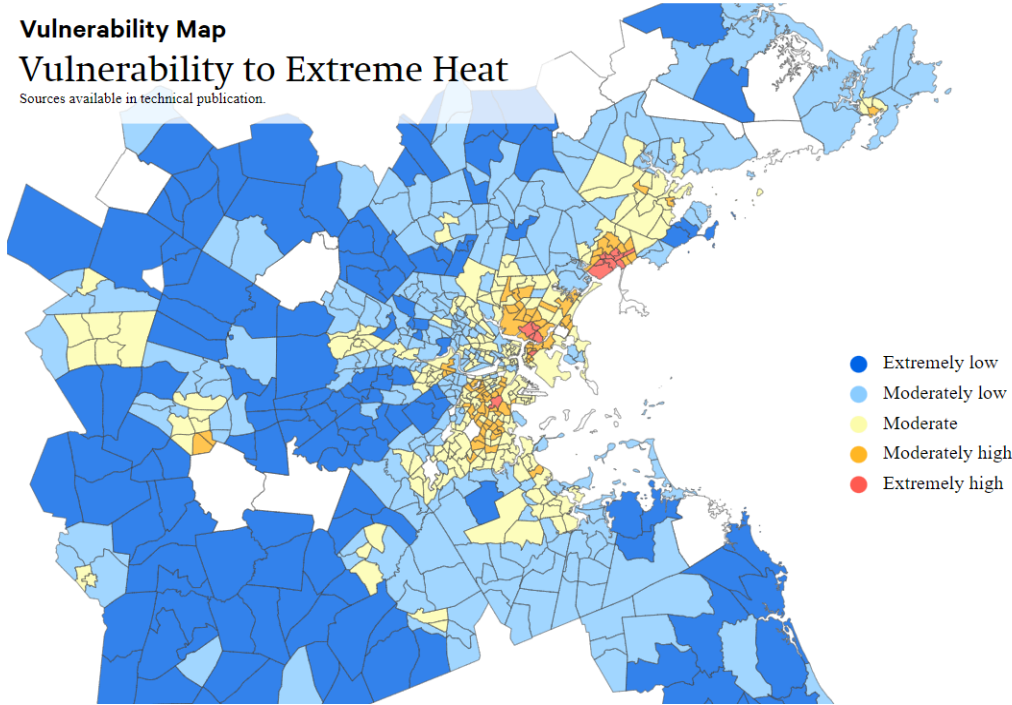
Explore the Region

+
 +
 = Vulnerability Index: Heat

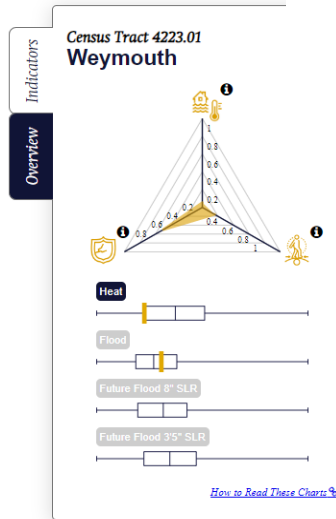
Vulnerability Map

Vulnerability to Extreme Heat

Sources available in technical publication.



- Extremely low
- Moderately low
- Moderate
- Moderately high
- Extremely high



About the Playbook

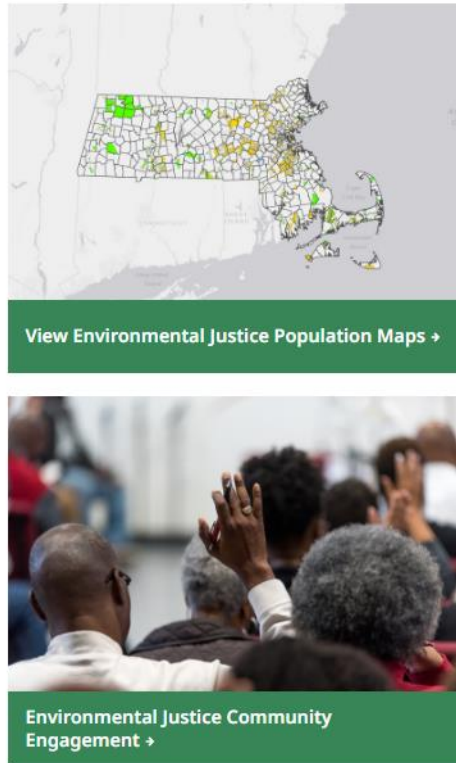
Cities and towns across Massachusetts play a key role in helping their communities get ready for the impacts of climate change. That includes protecting important community spaces, buildings, and systems, and most importantly, listening to and lifting up the voices of people most affected.

The Climate Resilience Playbook is not a strict rulebook—it's a guide full of ideas, tools, and examples from other Massachusetts communities who've tried different approaches and learned from them. The Playbook is meant to grow and improve over time, and we welcome suggestions. If you have ideas or feedback, just scroll to the bottom of the Playbook website and use the "Feedback" form.


Tools & Resources

MA Office of Environmental Justice & Equity - Mapping & Engagement Resources

- **New for 2026!** EEA's draft MassEnviroScreen Tool for Burdened Areas



Municipal Vulnerability Preparedness (MVP)'s Guides for Equitable and Actionable Resilience (GEAR)



Guides for Equitable and Actionable Resilience (GEAR)

GEAR provides Massachusetts communities access to data and guidance to assess climate change impacts, as well as actions and case studies for building community resilience. Provide feedback: info.resilientma@mass.gov.

Centering Equity in Your Projects (cont.)

Resources:

- MAPC's **Climate Vulnerability Index for Metro Boston** <https://climate-vulnerability.mapc.org/>
- **Climate Resilience Playbook** <https://resilienceplaybook.mapc.org/>
- **MA Office of Environmental Justice & Equity - Mapping & Engagement Resources** <https://www.mass.gov/orgs/office-of-environmental-justice-equity-oeje>
 - **New for 2026! Draft MassEnviroScreen Tool**
- **Municipal Vulnerability Preparedness (MVP)'s Guides for Equitable and Actionable Resilience (GEAR)** <https://resilient.mass.gov/GEAR>

Resilience Community of Practice

- ✓ Workshops and site visits
- ✓ Member directory

- ✓ News & Updates



Accelerating Climate Resilience Speaker Series

Conversations with experts and practitioners from across the country who can speak to the ways they are perceiving and advancing resilience.

Past events include conversations about the effects of sea level rise on municipal budgets, climate resilience and racial justice, building social resilience through art, and empowering youth movements on climate.



Our Speakers



Pooja Tilvawala

Youth Engagement Manager for The Climate Initiative; Executive Director of the Youth Climate Collaborative



Daniela Kunkel-Linares

Youth Environmental Activists (YEA!) Coordinator for Climate Generation



Simone Colburn

Co-Founder of Spring Forward



FY27 ACR Invitation for Proposals

Accepting applications!

**Open to Non-Municipal Leads with 501(c)(3) status*

Deadline to submit:

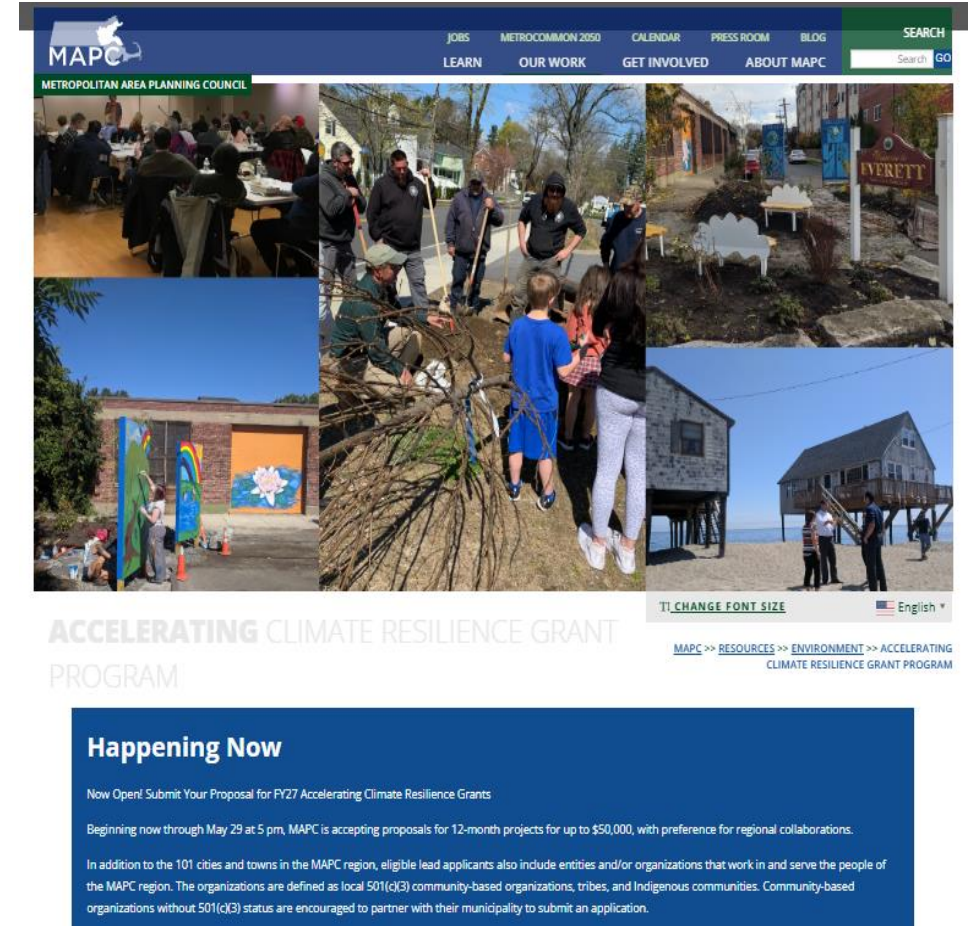
May 29, 2026, by 5PM

****Online Submission****

12-month projects, up to \$50,000 per project

Eligible project types:

- Technical assistance or design
- Capital, construction projects
- Capacity building initiatives



MAPC METROCOMMON 2050 CALENDAR PRESS ROOM BLOG SEARCH
LEARN OUR WORK GET INVOLVED ABOUT MAPC Search GO

METROPOLITAN AREA PLANNING COUNCIL

ACCELERATING CLIMATE RESILIENCE GRANT PROGRAM

MAPC >> RESOURCES >> ENVIRONMENT >> ACCELERATING CLIMATE RESILIENCE GRANT PROGRAM

CHANGE FONT SIZE English

Happening Now

Now Open! Submit Your Proposal for FY27 Accelerating Climate Resilience Grants

Beginning now through May 29 at 5 pm, MAPC is accepting proposals for 12-month projects for up to \$50,000, with preference for regional collaborations.

In addition to the 101 cities and towns in the MAPC region, eligible lead applicants also include entities and/or organizations that work in and serve the people of the MAPC region. The organizations are defined as local 501(c)(3) community-based organizations, tribes, and Indigenous communities. Community-based organizations without 501(c)(3) status are encouraged to partner with their municipality to submit an application.

Visit www.mapc.org/acceleratingresiliency to download forms.

Non-Municipal Led Applications

- Eligible organizations are defined as local 501(c)(3) community-based organizations (CBOs), tribes, and Indigenous communities.
- CBOs without 501(c)(3) status are encouraged to partner with their municipality to submit an application.
- To qualify for grant review and selection, non-municipal led applications must include a letter of support from a municipal staff member or official.

FY27 ACR Grant Timeline

	Deadline
Expression of Interest Form (EOI) / Office Hours	March 23 – April 10, 2026
FY2027 Invitation for Proposals Open	April 15, 2026
Informational Webinar	April 27, 2026, 12PM
Application Workshop for Community Partners	April 30, 2026, 12PM
Proposals Due	May 29, 2026, by 5PM
Award Announcements	August 2026
ACR Project Start & End Date	~September 2026-September 2027

✓ All funded projects will also be required to submit the preliminary scope update and mid-year and final reporting

**This is a reimbursement type grant*

3 Month Preliminary Period

Grant contract completed

Grantees work on up to 3 months of final planning (i.e., continue community buy in, meet with project partners, research procurement needs, etc.)

Updates to scope submitted to MAPC

MAPC approves updated scope

**Questions about the grant program
and/or FY27 application process?**

Evaluation Criteria

- Target at least one of the nine ACR Program Priorities
- Identify one or more specific climate risks and how the project will strengthen resilience
- Demonstrate feasibility through an achievable scope of work and timeline, project team capacity, and realistic budget
- Be designed and implemented with an equity lens
- Demonstrate meaningful engagement and support from the public, or a clear path for generating public support
- Create opportunities for learning, replication, and the development of best practices.
- Demonstrate regional collaboration

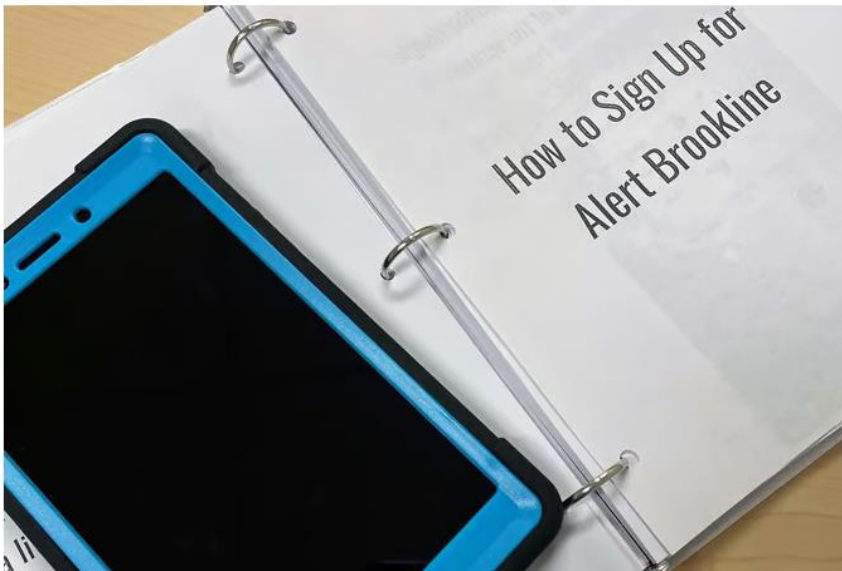
Projects that advance climate equity and directly benefit climate vulnerable populations are given higher priority



Improvements to social resiliency or cohesion

Town of Brookline Offers 'Tech Buddies' Program To Supply Low-Income Seniors with Tablets and Internet Access Amid Pandemic

NOVEMBER 29, 2021 BY JGPRROBERT





Capacity building through coalitions or convenings

CLIMATE & CLEAN AIR COALITION
TO REDUCE SHORT-LIVED CLIMATE POLLUTANTS

Follow Us [t](#) [f](#) [i](#) [in](#)

Search

ABOUT PARTNERS INITIATIVES SOLUTION CENTRE SCIENCE EVENTS NEWS & MEDIA GET INVOLVED

2020 Global Methane Budget shows methane emissions heading in the wrong direction with fossil fuel and agriculture sources leading the way
SCIENCE 15 July, 2020

Reducing Emissions Intensity to Feed the Planet— Now and in the Future
INITIATIVE **PARTNER** 3 July, 2020

Science Policy Dialogue 2020: The opportunities and challenges to reduce methane emissions by 2030 to achieve the
SCIENCE 30 June, 2020

Brick kilns – Tackling an industry that hurts people, animals and the environment
PARTNER 26 June, 2020

Big majority of people in five key countries want stricter regulation on air pollution post COVID-19
PARTNER 17 June, 2020

FOR THE ASSABET SUDBURY & CONCORD RIVERS

REACTS TAKE ACTION OUR WORK EVENTS ABOUT Search

SuAsCo Climate Resiliency Coalition

Photo: Parterre Ecological

Exploring synergies between climate adaptation and mitigation and other co-benefits

District-scale pilots



Chelsea is Building a Community Microgrid!

This project will help you and your neighbors stay safe in a power outage. Using clean sources of energy, we are creating a *microgrid*, which will provide reliable electricity to participating buildings even when the grid has an outage!



Resilience in Chelsea

¿Cuáles son sus principales necesidades en el caso de un apagón eléctrico?

In the case of a power outage, what are your most important needs?

¿Qué podemos implementar ante un desastre climático/ ambiental de nuestra respuesta a la pandemia?

What can we implement from our pandemic response to a climate/ environmental disaster?



Local food systems or community agriculture resiliency measures



Outreach, marketing, or arts and culture projects that advance climate change knowledge or action.

NEW PERSPECTIVE ON CLIMATE CHANGE: REMEMBRANCE OF CLIMATE FUTURES/ARLINGTON

join us for a
Celebration!
SUNDAY
OCT 31
1-2 PM

Join the teen interns of
Climate Futures/Arlington!
See their project on the Fox Library

SUNDAY, Oct 31, 1-2 outside the Fox Library • NOTE NEW DATE FOR RAIN! • 175 Mass Ave, Arlington
RSVP requested to: ClimateFuturesArlington@gmail.com www.ArtsArlington.org

ARLINGTON REMEMBRANCE TRAIL - 3

Arlington Tree
Committee plants
first of 1,000 trees on
Mass Ave to reduce
heat island effect -
May 1,
2030



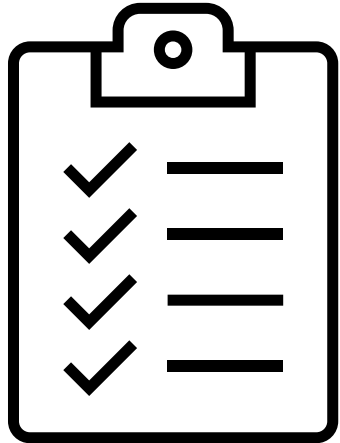
Shade is Social Justice



Check out Appendix C for more potential project examples!

Priority Areas	Grant Type		
	Technical Assistance/Design	Capital	Capacity Building
Nature-Based Solutions	Design, engineering, and/or feasibility of a climate-smart park or playground.	Green Infrastructure retrofit in park.	Research and convene stakeholder group focused urban forestry with carbon trading program model
	GHG accounting of nature-based resources with carbon sequestration potential (e.g., soils, trees, wetlands)	Green Infrastructure installation in an existing park improvement project.	Equity-driven community engagement process on identifying and addressing greatest need for nature-based solutions in a community or neighborhood.
	Open Space and Recreation Plans that prioritize climate resilience.	Collective purchasing (with multiple municipalities) of street trees. Strategic planting of street trees.	Community outreach, training programs to support the development and maintenance of community green spaces (including pollinator gardens, community farms/gardens, food forests, etc.)
	Park Equity Assessment that considers climate and park accessibility.	Increased connectivity of parks, trails, and municipal assets for walking and biking.	
	Hydrologic analysis for stormwater interventions in vulnerable neighborhoods.	Salt marsh restoration project	

Proposal Tips & Recommendations



- Regional collaboration!
- Prioritize climate equity.
- Connect your project with your municipal planning efforts. The grant is to advance implementation of planning efforts.
- Project readiness and capacity are important - partner if you can.
- Leverage other local, state, and/or federal funds.
- Community support can make or break a project.
- Be clear of your proposed deliverables.

Questions & Discussion

Upcoming: Application Workshop for Community Partners

- Non- Municipal entities applying as a lead applicant are invited to our Writing Workshop
- April 30, 12-1 pm
- Register today!



Photo Credit: City of Everett



Accelerating Climate Resilience Webinar

The Future of Local Food Systems: How Rural and Urban Farms are Changing with the Climate

Join us to discuss the importance of resilient local food systems (urban and rural) and hear specific examples that showcase best practices. Guest speakers will share how they have built climate resilience at Mack Park Farm in Salem and Eastie Farm in East Boston. Community Involved in Sustaining Agriculture (CISA) staff will share about the technical assistance they provide to farmers who are working to prepare their farms for extreme weather events.

April 28
12:00-1:30PM EST

Register today!



[https://mapc.ma/
FutureLocalFoodSystems](https://mapc.ma/FutureLocalFoodSystems)



Kerry Murphy, RDN
Health and Wellness Coordinator
City of Salem Health Department



Kannan Thiruvengadam
Executive Director
Eastie Farm



Kelly Coleman
Deputy Director
Community Involved in Sustaining Agriculture (CISA)



A scenic view of a city skyline across a lake. The skyline features several tall, modern buildings. In the foreground, a large body of water is filled with people kayaking. The water is surrounded by lush green trees and vegetation. The sky is overcast with grey clouds. The text "Thank You!" is overlaid in the center of the image.

Thank You!